



RESOLUTION NO. 222-2016

OF THE BOARD OF SUPERVISORS OF THE COUNTY OF EL DORADO

WHEREAS, on December 13, 2016, this Board held a public hearing after notice thereof, as provided by law, on the request for the amendment of Agricultural Preserve No. 298 as set forth herein.

NOW, THEREFORE, BE IT RESOLVED by the Board of Supervisors of the County of El Dorado that this Board does hereby amend the following agricultural preserve comprising of the Assessor's Parcel Numbers, as shown in Exhibit A, as set forth herein:

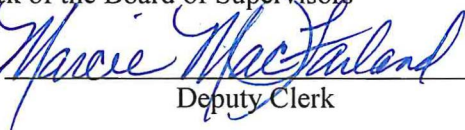
Existing Preserve No.	Owner	Parcel No.	Acres	Area
298	Randy Rossi	093-040-46	40.001	Somerset

Amended Preserve No.	Owner	Parcel Nos.	Acres	Area
298	Randy Rossi	093-040-46, 093-040-45 (portion)	40.001 <u>34.405</u> 74.406	Somerset


PASSED AND ADOPTED by the Board of Supervisors of the County of El Dorado at a regular meeting of said Board, held the 13th day of December, 2016, by the following vote of said Board:

Attest:
James S. Mitrising
Clerk of the Board of Supervisors

By:


Deputy Clerk

Ayes: Frentzen, Veerkamp, Mikulaco, Ranalli, Novasel
Noes: None
Absent: None


Ron Mikulaco, Chair, Board of Supervisors

SECS. 13, 14, 15, 22, 23, & 24, T.9N., R.12E., M.D.M.

93:04

1" equals 1,200'

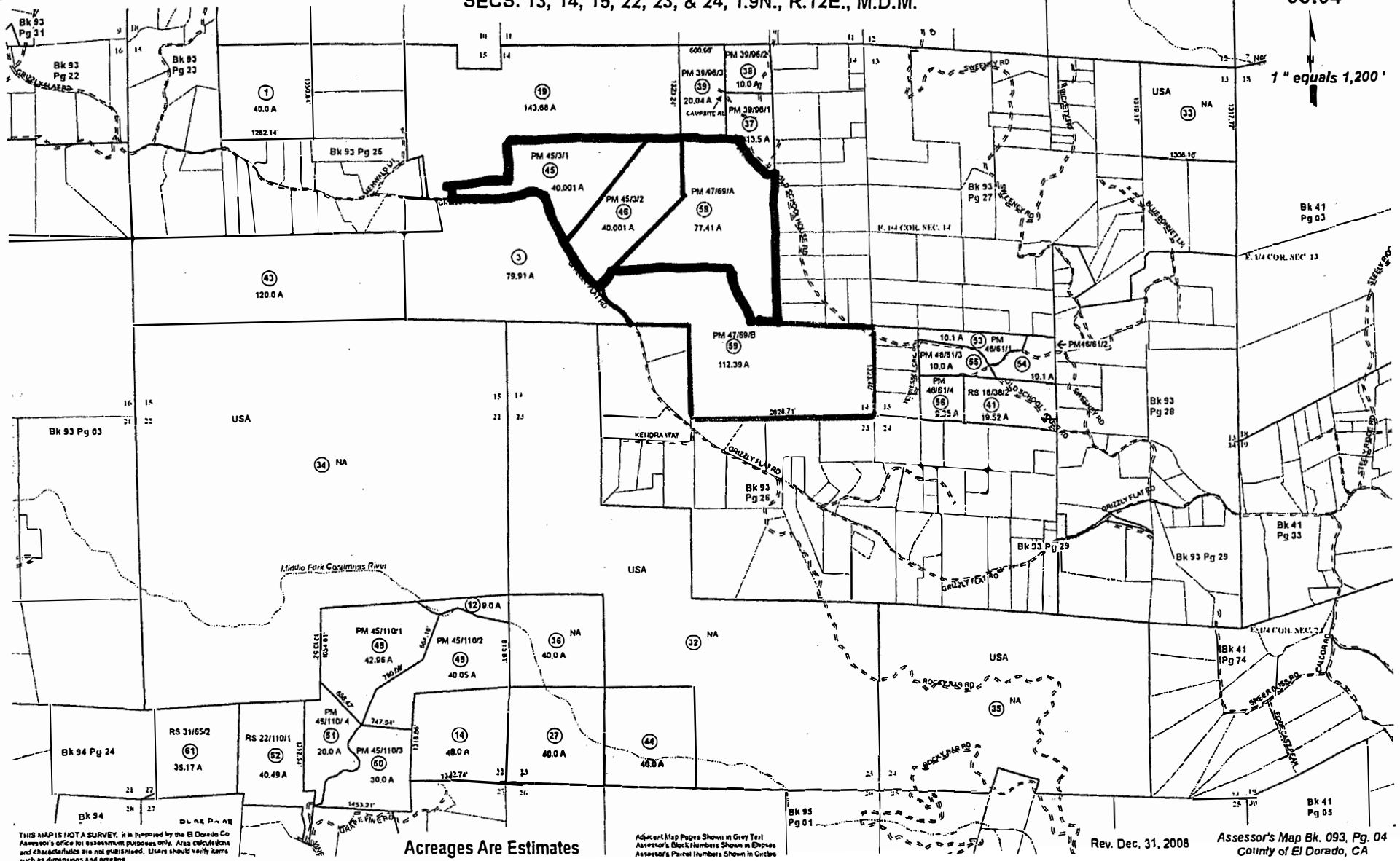


EXHIBIT A

THIS MAP IS NOT A SURVEY. It is prepared by the El Dorado Co Assessor's office for assessment purposes only. Area calculations and characteristics are not guaranteed. Users should verify items such as dimensions and acreage.

Acreages Are Estimates

Adjacent Map Pages Shown in Grey Text
Assessor's Block Numbers Shown in Italic
Assessor's Parcel Numbers Shown in Circles

Rev. Dec. 31, 2008

Assessor's Map Bk. 093, Pg. 04
County of El Dorado, CA