

LEGEND
 NOTE: NOT ALL SYMBOLS MAY BE USED ON THESE PLANS.

- EXISTING TOPOGRAPHY**
- PROJECT BOUNDARY
 - NEW PARCEL LINE
 - CENTRAL LINE
 - EASEMENT
 - SWALE OR DRAINAGE FLOW
 - FENCE
 - TREE (SIZE/TYPE INDICATED)
 - SLOPE
 - CONTOUR
 - CONCRETE SURFACE
 - EDGE OF ASPHALT
- EXISTING UTILITIES**
- COMMUNICATIONS LINE (RECORD INFORMATION)
 - ELECTRICAL LINE (RECORD INFORMATION)
 - GAS LINE (RECORD INFORMATION)
 - TELEPHONE LINE (RECORD INFORMATION)
 - STORM DRAIN LINE (SIZE & DIRECTION OF FLOW)
 - STORM DRAIN LINE (RECORD INFORMATION)
 - STORM DRAIN MANHOLE
 - STORM DRAIN CLEANOUT
 - DROP INLET
 - AREA DRAIN
 - SANITARY SEWER LINE (SIZE & DIRECTION OF FLOW)
 - SANITARY SEWER LINE (RECORD INFORMATION)
 - SANITARY SEWER MANHOLE
 - SANITARY SEWER CLEANOUT
 - WATER LINE (RECORD INFORMATION)
 - BACKFLOW PREVENTER
 - IRRIGATION CONTROL VALVE
 - FIRE DEPARTMENT CONNECTION
 - FIRE HYDRANT
 - WATER BOX
 - WATER METER
 - WATER VALVE

PROPOSED GRADING & DRAINAGE SYMBOLS:

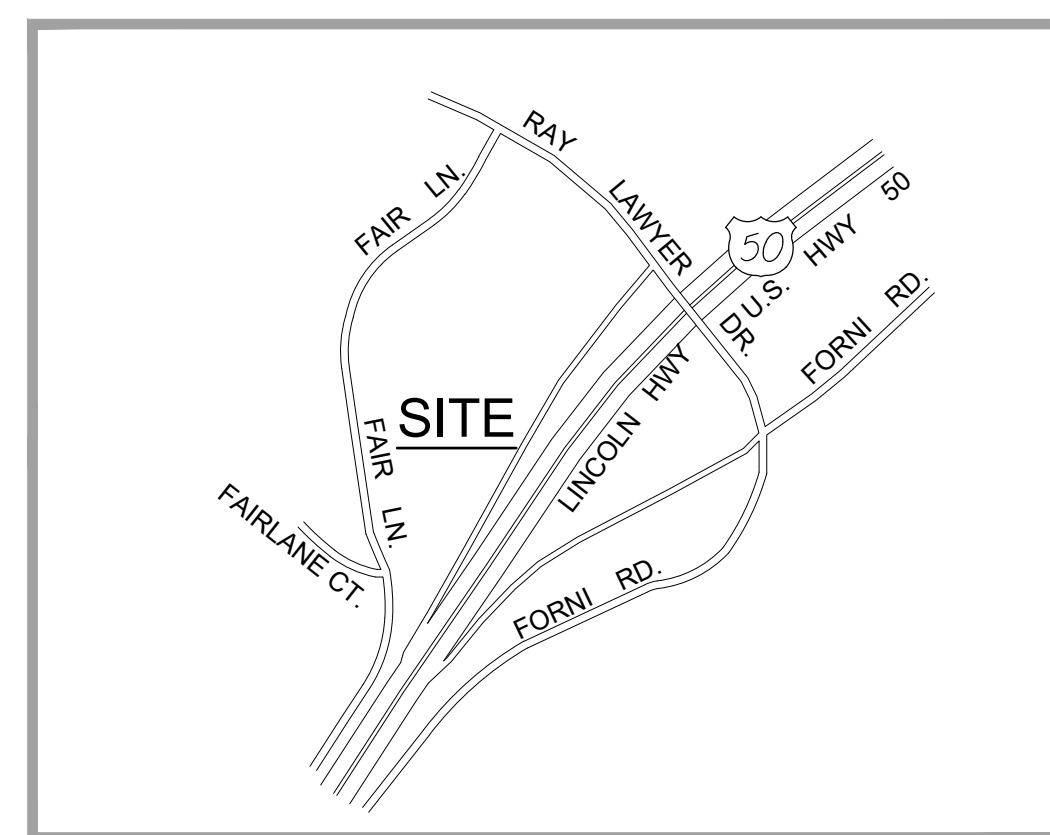
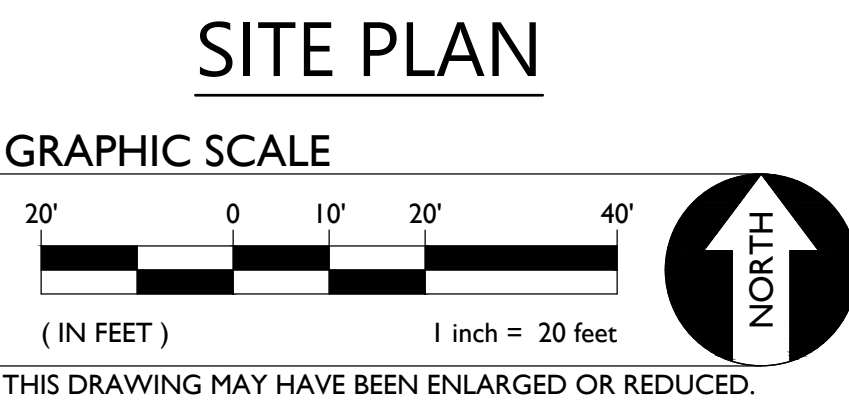
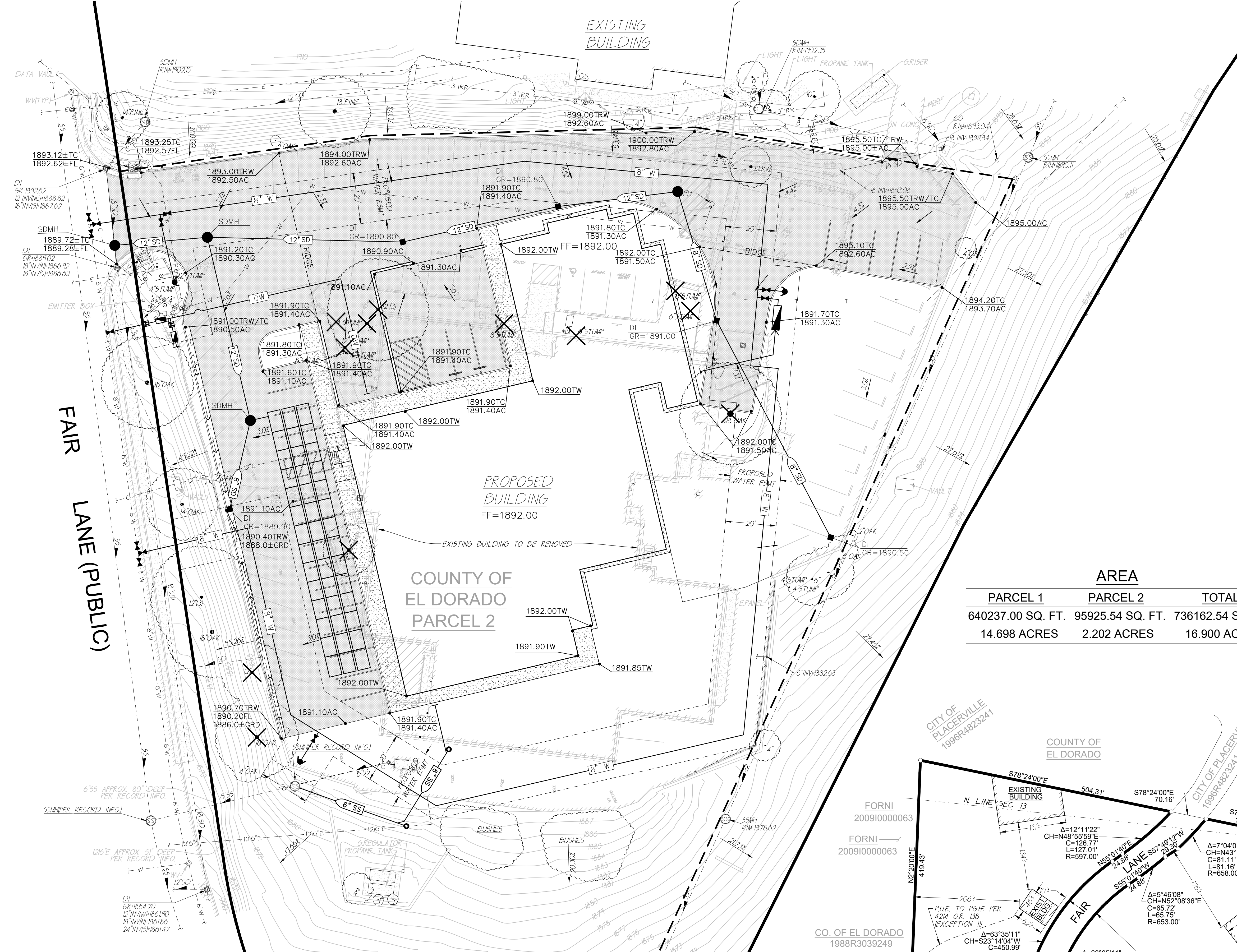
- STORM DRAIN LINE (SIZE AND FLOW SHOWN)
- STORM DRAIN MANHOLE (SDMH)
- DROP INLET (DI)
- AREA DRAIN (AD)
- STORM DRAIN CLEANOUT
- ELEVATION
- FINISHED FLOOR ELEVATION
- BUILDING PAD ELEVATION
- CONCRETE SIDEWALK
- GRADED DIRECTION FOR DRAINAGE FLOW
- SWALE
- SLOPE
- TREE TO BE REMOVED
- RETAINING WALL

PROPOSED SANITARY SEWER SYMBOLS:

- SANITARY SEWER LINE (SIZE AND FLOW SHOWN)
- SANITARY SEWER MANHOLE (SSMH)
- SEWER CLEANOUT
- FLUSHER BRANCH

PROPOSED WATER SYMBOLS:

- WATER LINE & SIZE
- FIRE LINE & SIZE
- DOMESTIC WATER LINE & SIZE
- GATE VALVE
- WATER METER
- FIRE HYDRANT ASSEMBLY
- FIRE DEPARTMENT CONNECTION
- DETECTOR CHECK VALVE
- DOUBLE DETECTOR CHECK VALVE
- REDUCED PRESSURE BACKFLOW PREVENTER
- BUTTERFLY VALVE
- AIR RELEASE VALVE + SIZE
- BLOW-OFF VALVE + SIZE
- POST INDICATOR VALVE



LOCATION MAP
 NOT TO SCALE

AREA

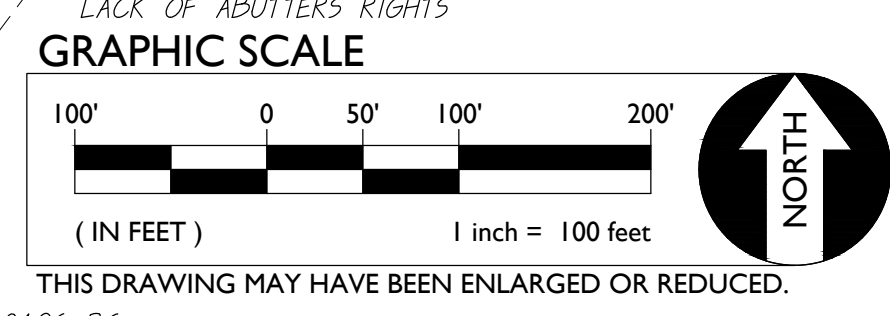
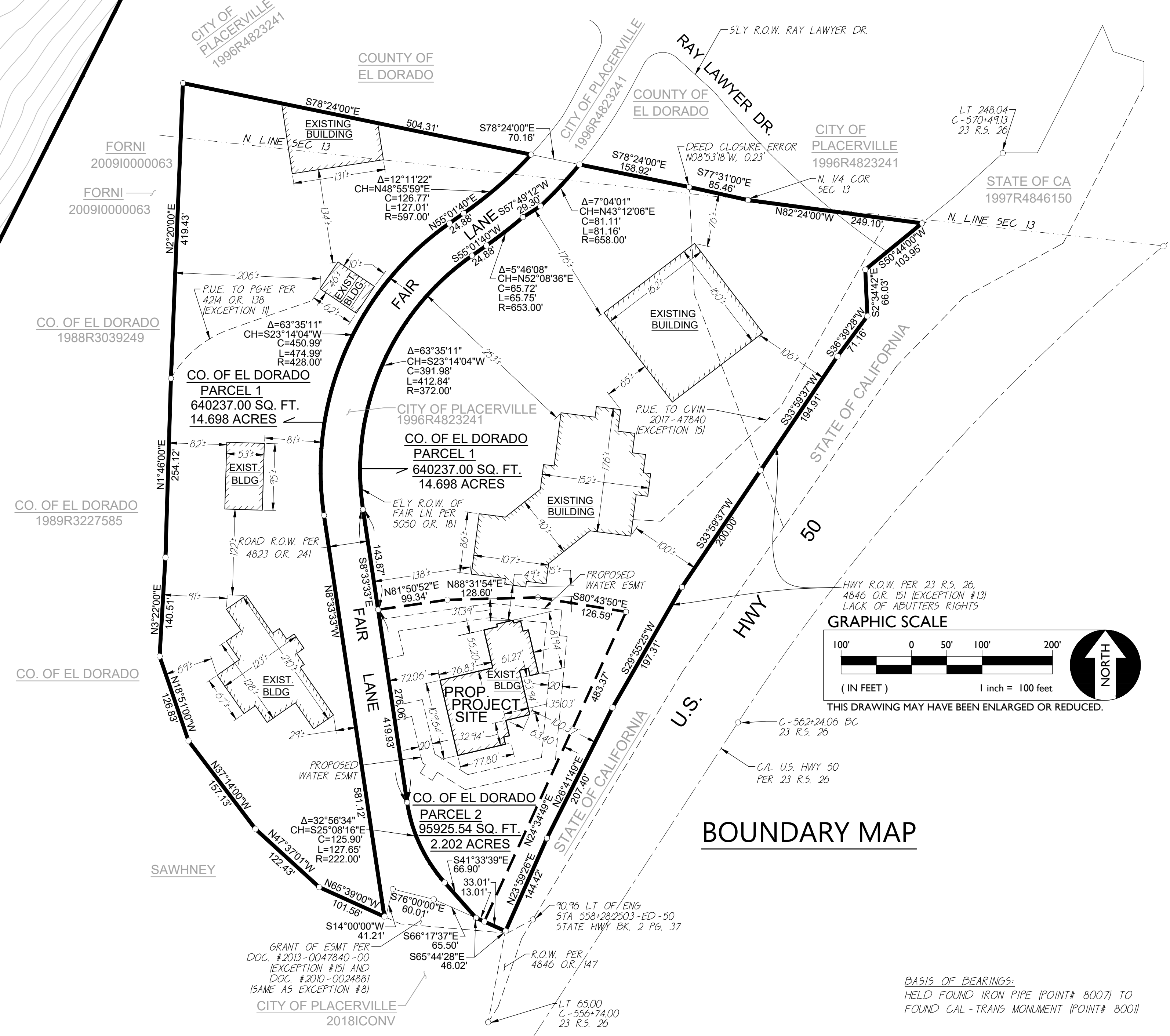
PARCEL 1	PARCEL 2	TOTAL
640237.00 SQ. FT.	95925.54 SQ. FT.	736162.54 SQ. FT.
14.698 ACRES	2.202 ACRES	16.900 ACRES

TENTATIVE PARCEL MAP
 OF
 A PORTION OF THE NORTH 1/2 OF SECTION 13,
 & THE SOUTHWEST 1/4 OF SECTION 12,
 TOWNSHIP 10 NORTH RANGE 10 EAST M.D.M.,
 & ALL THAT PORTION OF THE NORTH 1/2 OF SECTION 13
 & THE SOUTH 1/2 OF SECTION 12,
 TOWNSHIP 10 NORTH RANGE 10 EAST M.D.M.,
 CITY OF PLACERVILLE,
 COUNTY OF EL DORADO,
 STATE OF CALIFORNIA
 DECEMBER 2020

WARREN CONSULTING ENGINEERS
 SHEET 1 OF 1

- A) OWNER OF RECORD: COUNTY OF EL DORADO
- B) APPLICANT NAME:
- C) MAP PREPARED BY: WARREN CONSULTING ENGINEERS INC., 1117 WINDFIELD WAY, SUITE 110, EL DORADO HILLS, CA 95672 (916)985-1870
- D) MAP SCALE(S): BOUNDARY MAP, 1 INCH = 100 FEET; SITE PLAN, 1 INCH = 20 FEET
- E) CONTOUR INTERVAL = 1 FOOT
- F) TOPOGRAPHY SOURCE: FIELD SURVEY BY WARREN CONSULTING ENGINEERS INC. COMPLETED 4/26/18
- G) SECTION, TOWNSHIP, AND RANGE: SECTIONS 12 & 13, TOWNSHIP 10 NORTH, RANGE 10 EAST, M.D.M.
- H) ASSESSOR'S PARCEL NO.: 325-240-021
- I) ZONING DESIGNATION: PF - PUBLIC FACILITIES ZONE
- J) TOTAL PARCEL AREA: 17.16 ACRES (PER RECORD DEEDS) 16.90 ACRES (PER RECORD DEEDS)
- K) MINIMUM PARCEL AREA: 6,000 SQ. FT.
- L) TOTAL NUMBER OF PARCELS = 2
- M) WATER SUPPLY: EL DORADO IRRIGATION DISTRICT
- N) SEWAGE DISPOSAL: EL DORADO IRRIGATION DISTRICT
- O) PROPOSED STRUCTURAL FIRE PROTECTION: YES
- P) DATE OF PREPARATION: 12/17/20
- Q) FLOOD ZONE INFO: "ZONE X" PER FIRM PANEL 06017C0752E DATED 9/26/08

DEVELOPMENT SERVICES DIRECTOR: _____
 APPROVAL/DENIAL DATE: _____
 PLANNING COMMISSION: _____
 APPROVAL/DENIAL DATE: _____
 CITY COUNCIL: _____
 APPROVAL/DENIAL DATE: _____



BOUNDARY MAP

TITLE: TENTATIVE PARCEL MAP
 PROJECT: EL DORADO COUNTY JUVENILE FACILITY SB81 AT 330 FAIRLANE CT., CITY OF PLACERVILLE, CALIFORNIA
 SHEET NO. 1

WARREN CONSULTING ENGINEERS, INC.
 1117 WINDFIELD WAY, SUITE 110
 EL DORADO HILLS, CA 95672 (916)985-1870

DATE: _____
 BY: _____
 CHECKED: _____
 SURVEYED ON: _____
 XX/XX/XX
 FINAL ISSUED: _____
 XX/XX/XX

AGENCY APPROVAL: _____
 DATE: _____

REVISIONS: _____

HORIZONTAL SCALE: 1" = 100'

VERTICAL SCALE: NA

BENCHMARK NO.: 925-240-021
 ELEV. 1917.00

FINISHED FLOOR ELEVATION OF BUILDING "A" UPPER LEVEL USED AS THE BASIS OF ELEVATION FOUND ON EL DORADO COUNTY GOVERNMENT CENTER BUILDING "A" ADDITION DRAWINGS BY MORRIS AND DOWNS AIA ARCHITECTS, INC. JOB NUMBER 9166 DATED 8-7-11