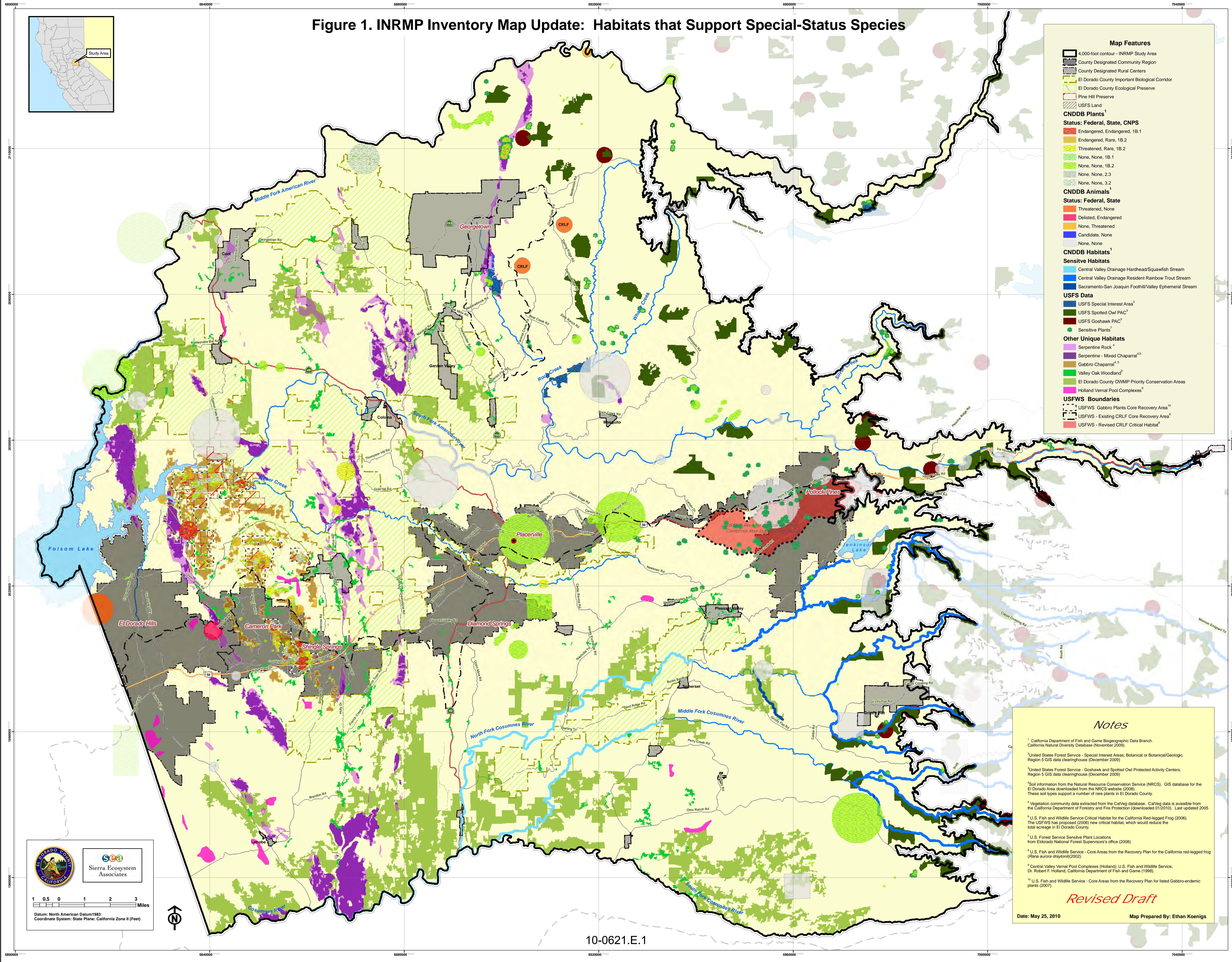


Figure 1. INRMP Inventory Map Update: Habitats that Support Special-Status Species



Map Features

- 4,000-foot contour - INRMP Study Area
- County Designated Community Region
- County Designated Rural Centers
- El Dorado County Important Biological Corridor
- El Dorado County Ecological Preserve
- Pine Hill Preserve
- USFS Land

CNDDB Plants¹

Status: Federal, State, CNPS

- Endangered, Endangered, 1B.1
- Endangered, Rare, 1B.2
- Threatened, Rare, 1B.2
- None, None, 1B.1
- None, None, 1B.2
- None, None, 2.3
- None, None, 3.2

CNDDB Animals¹

Status: Federal, State

- Threatened, None
- Delisted, Endangered
- None, Threatened
- Candidate, None
- None, None

CNDDB Habitats¹

Sensitive Habitats

- Central Valley Drainage Headwaters/Squawfish Stream
- Central Valley Drainage Resident Rainbow Trout Stream
- Sacramento-San Joaquin Foothill/Valley Ephemeral Stream

USFS Data

- USFS Special Interest Area²
- USFS Spotted Owl PAC³
- USFS Goshawk PAC³
- Sensitive Plants⁴

Other Unique Habitats

- Serpentine Rock⁵
- Serpentine - Mixed Chaparral^{4,5}
- Gabbro Chaparral^{4, 5}
- Valley Oak Woodland⁶
- El Dorado County OWM⁷ Priority Conservation Areas
- Holland Vernal Pool Complexes⁸

USFWS Boundaries

- USFWS Gabbro Plants Core Recovery Area⁹
- USFWS - Existing CRLF Core Recovery Area⁹
- USFWS - Revised CRLF Critical Habitat⁹

Notes

- California Department of Fish and Game Biogeographic Data Branch, California Natural Diversity Database (November 2009).
- United States Forest Service - Special Interest Areas; Botanical or Botanical/Geologic, Region 5 GIS data clearinghouse (December 2009).
- United States Forest Service - Goshawk and Spotted Owl Protected Activity Centers, Region 5 GIS data clearinghouse (December 2009).
- Soil information from the Natural Resource Conservation Service (NRCS). GIS database for the El Dorado Area downloaded from the NRCS website (2008). These soil types support a number of rare plants in El Dorado County.
- Vegetation community data extracted from the CalVeg database. CalVeg data is available from the California Department of Forestry and Fire Protection (downloaded 01/20/10). Last updated 2005.
- U.S. Fish and Wildlife Service Critical Habitat for the California Red-legged Frog (2006). The USFWS has proposed (2008) new critical habitat, which would reduce the total acreage in El Dorado County.
- U.S. Forest Service Sensitive Plant Locations from Eldorado National Forest Supervisor's office (2008).
- U.S. Fish and Wildlife Service - Core Areas from the Recovery Plan for the California red-legged frog (*Rana aurora draytoni*) (2002).
- Central Valley Vernal Pool Complexes (Holland); U.S. Fish and Wildlife Service, Dr. Robert F. Holland, California Department of Fish and Game (1998).
- U.S. Fish and Wildlife Service - Core Areas from the Recovery Plan for listed Gabbro-endemic plants (2007).

Revised Draft

Date: May 25, 2010 Map Prepared By: Ethan Koenigs

Sierra Ecosystem Associates

1 0.5 0 1 2 3 Miles

Datum: North American Datum 1983
Coordinate System: State Plane: California Zone II (Feet)