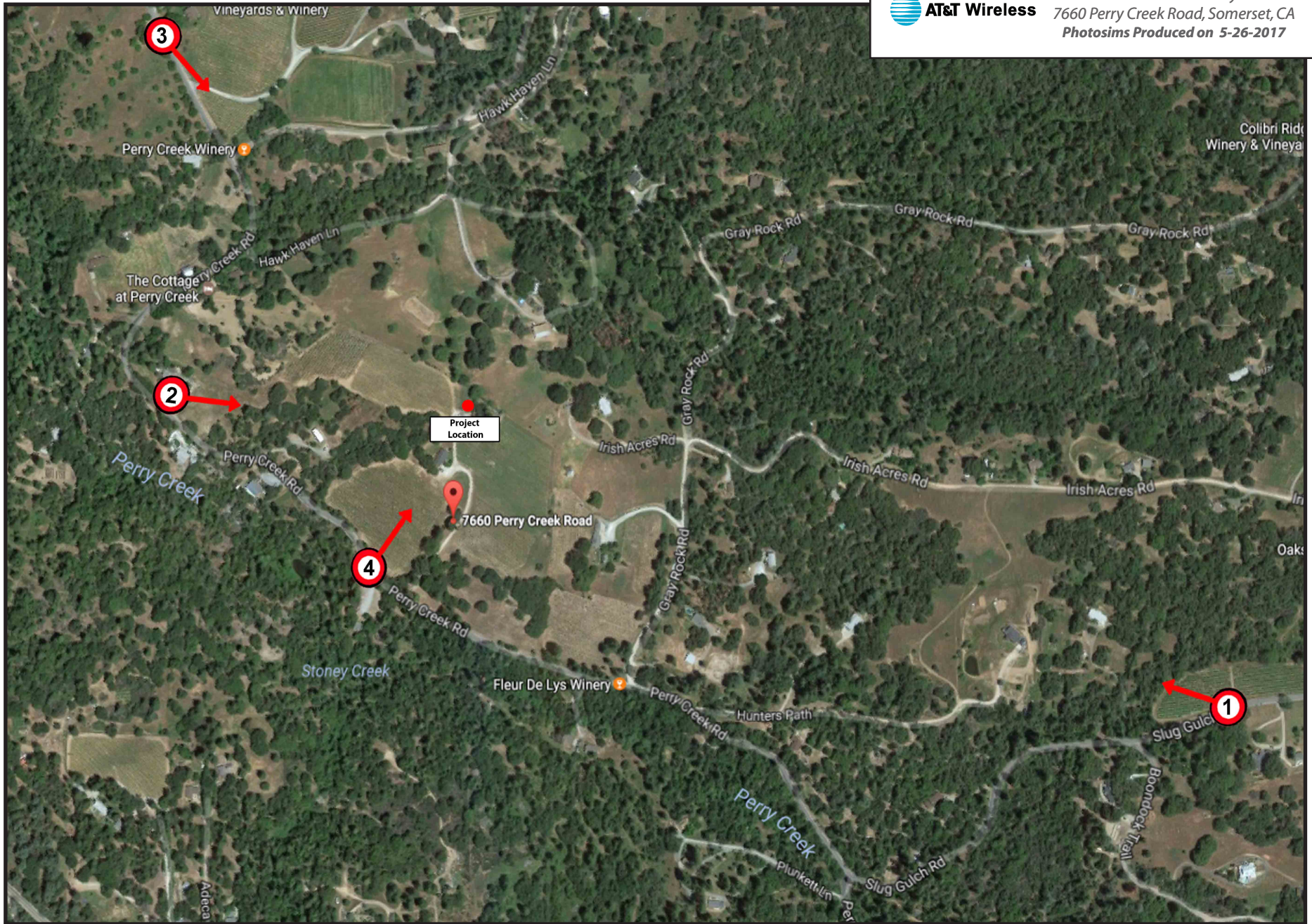


Site 5-Exhibit G



CVL03018 Fair Play
7660 Perry Creek Road, Somerset, CA
Photosims Produced on 5-26-2017



Existing



Proposed

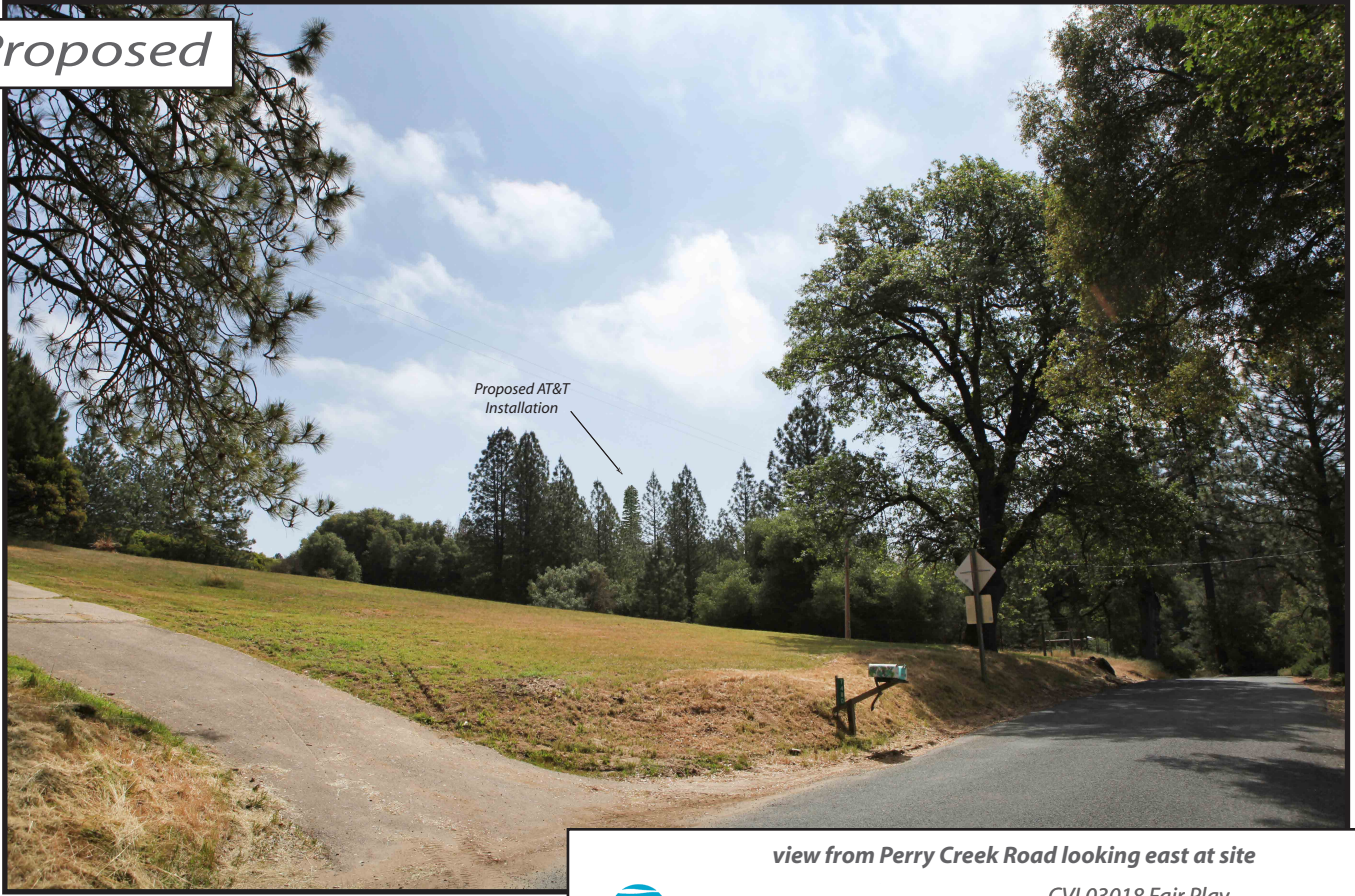


view from Slug Gulch Road looking west at site

Existing



Proposed



view from Perry Creek Road looking east at site



CVL03018 Fair Play
7660 Perry Creek Road, Somerset, CA
Photosims Produced on 5-26-2017



Existing



Proposed



view from Perry Creek Road looking southeast at site



CVL03018 Fair Play
7660 Perry Creek Road, Somerset, CA
Photosims Produced on 5-26-2017



Existing



Proposed



view from Perry Creek Road looking northeast at site



CVL03018 Fair Play
7660 Perry Creek Road, Somerset, CA
Photosims Produced on 5-26-2017

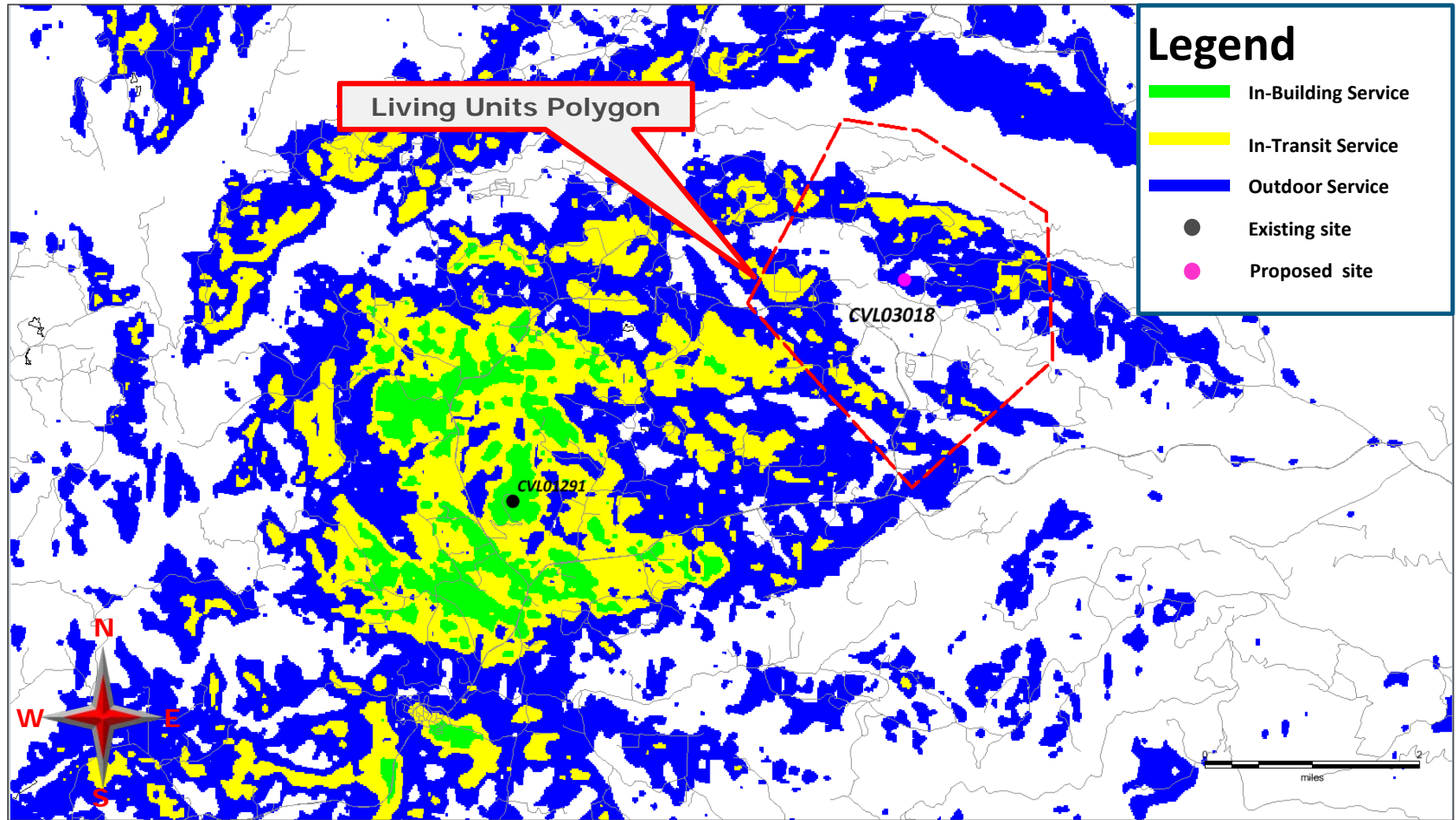


Site 5-Exhibit H

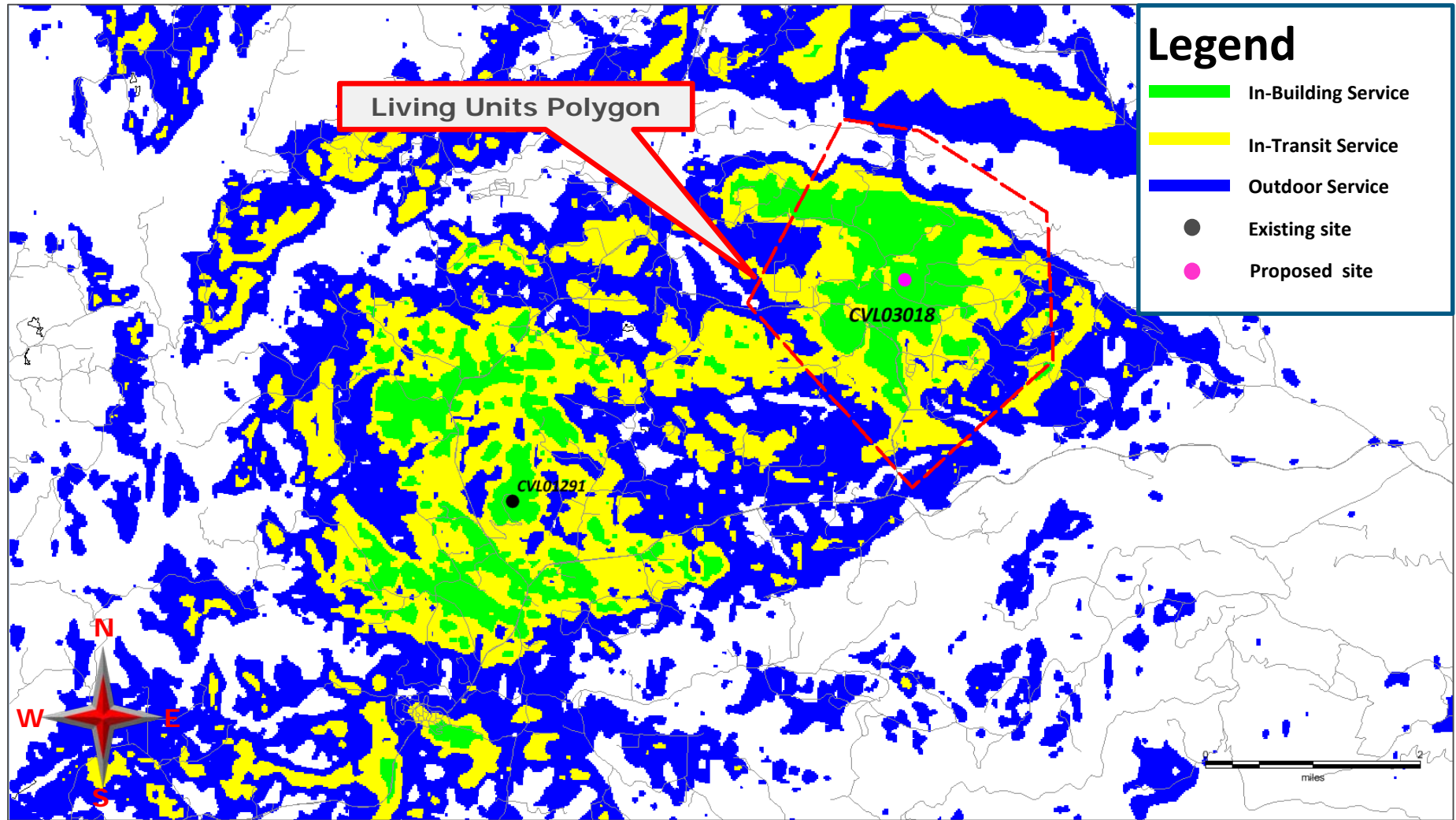
CVL03018 Zoning Propagation Map

March 8th , 2017

Existing LTE 700 Coverage



Existing LTE 700 Coverage With CVL03018 @ RC – 160ft Supports 480 LU's





Radio Frequency Emissions Compliance Report For AT&T Mobility

Site Name: Fair Play	Site Structure Type: Monopine
Address: 7660 Perry Creek Road Somerset, CA	Latitude: 38.603603
Report Date: May 30, 2017	Longitude: -120.659195
	Project: New Build

General Summary

AT&T Mobility has contracted Waterford Consultants, LLC to conduct a Radio Frequency Electromagnetic Compliance assessment of the proposed Fair Play site located at 7660 Perry Creek Road, Somerset, CA. This report contains information about the radio telecommunications equipment to be installed at this site and the surrounding environment with regard to RF Hazard compliance. This assessment is based on installation designs and operational parameters provided by AT&T Mobility.

The compliance framework is derived from the Federal Communications Commission (FCC) Rules and Regulations for preventing human exposure in excess of the applicable Maximum Permissible Exposure (“MPE”) limits. At any location at this site, the power density resulting from each transmitter may be expressed as a percentage of the frequency-specific limits and added to determine if 100% of the exposure limit has been exceeded. The FCC Rules define two tiers of permissible exposure differentiated by the situation in which the exposure takes place and/or the status of the individuals who are subject to exposure. General Population / Uncontrolled exposure limits apply to those situations in which persons may not be aware of the presence of electromagnetic energy, where exposure is not employment-related, or where persons cannot exercise control over their exposure. Occupational / Controlled exposure limits apply to situations in which persons are exposed as a consequence of their employment, have been made fully aware of the potential for exposure, and can exercise control over their exposure. Based on the criteria for these classifications, the FCC General Population limit is considered to be a level that is safe for continuous exposure time. The FCC General Population limit is 5 times more restrictive than the Occupational limits.

Frequency (MHz)	<i>Limits for General Population/ Uncontrolled Exposure</i>		<i>Limits for Occupational/ Controlled Exposure</i>	
	Power Density (mW/cm ²)	Averaging Time (minutes)	Power Density (mW/cm ²)	Averaging Time (minutes)
30-300	0.2	30	1	6
300-1500	f/1500	30	f/300	6
1500-100,000	1.0	30	5.0	6

f=Frequency (MHz)

In situations where the predicted MPE exceeds the General Population threshold in an accessible area as a result of emissions from multiple transmitters, FCC licensees that contribute greater than 5% of the aggregate MPE share responsibility for mitigation.

Based on the computational guidelines set forth in FCC OET Bulletin 65, Waterford Consultants, LLC has developed software to predict the overall Maximum Permissible Exposure possible at any particular location given the spatial orientation and operating parameters of multiple RF sources. These theoretical results represent worst-case predictions as emitters are assumed to be operating at 100% duty cycle.

For any area in excess of 100% General Population MPE, access controls with appropriate RF alerting signage must be put in place and maintained to restrict access to authorized personnel. Signage must be posted to be visible upon approach from any direction to provide notification of potential conditions within these areas. Subject to other site security requirements, occupational personnel should be trained in RF safety and equipped with personal protective equipment (e.g. RF personal monitor) designed for safe work in the vicinity of RF emitters. Controls such as physical barriers to entry imposed by locked doors, hatches and ladders or other access control mechanisms may be supplemented by alarms that alert the individual and notify site management of a breach in access control. Waterford Consultants, LLC recommends that any work activity in these designated areas or in front of any transmitting antennas be coordinated with all wireless tenants.

Analysis

AT&T Mobility proposes the following installation at this location:

- Add twelve (12) panel antennas, four (4) per Alpha, Beta, Gamma Sectors
- Add nineteen (21) RRUS

The antennas will be mounted on a 162-foot monopine with centerlines at 142.5 and 152.5 feet above ground level. The antennas will be oriented toward 90, 330 and 210 degrees. The Effective Radiated Power (ERP) in any direction from all AT&T Mobility operations will not exceed 25,995 Watts. Other appurtenances such as GPS antennas, RRUs and hybrid cable are not sources of RF emissions. From this site, AT&T Mobility will enhance voice and data services to surrounding areas in licensed 700, 850, 1900, 2100 and 2300 MHz bands. No other antennas are known to be operating in the vicinity of this site.

Power density decreases significantly with distance from any antenna. The panel-type antennas to be employed at this site are highly directional by design and the orientation in azimuth and mounting elevation, as documented, serve to reduce the potential to exceed MPE limits at any location other than directly in front of the antennas. For accessible areas at ground level, the maximum predicted power density level resulting from all AT&T Mobility operations is 0.3230% of the FCC General Population limits (0.0646% of the FCC Occupational limits). Incident at adjacent buildings depicted in Figure 1, the maximum predicted power density level resulting from all AT&T Mobility operations is 0.7015% of the FCC General Population limits (0.1403% of the FCC Occupational limits). The proposed operation will not expose members of the General Public to hazardous levels of RF energy and will not contribute to existing cumulative MPE levels on walkable surfaces at ground or at adjacent buildings by 5% of the General Population limits.

Waterford Consultants, LLC recommends posting contact information signage at the gate that informs personnel entering the site of basic precautions to be followed when working around antennas. RF alerting signage (Caution) should be posted at the base of the proposed monopine to inform authorized climbers of potential conditions near the antennas. These recommendations are depicted in Figure 2.



Figure 1: Antenna Locations

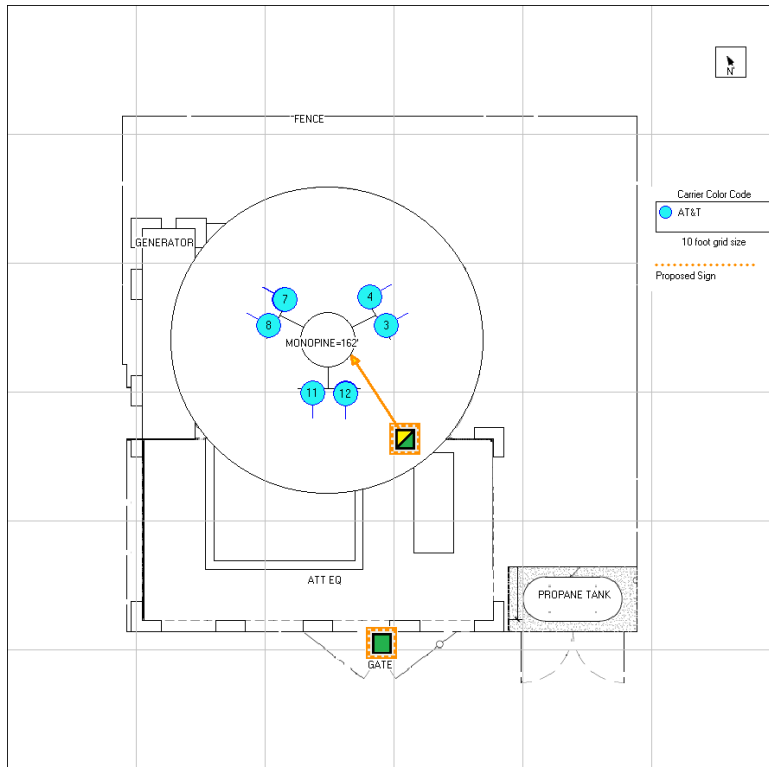


Figure 2: Mitigation Recommendations

Compliance Statement

Based on information provided by AT&T Mobility and predictive modeling, the installation proposed by AT&T Mobility at 7660 Perry Creek Road, Somerset, CA will be compliant with Radiofrequency Radiation Exposure Limits of 47 C.F.R. § 1.1307(b)(3) and 1.1310. RF alerting signage and restricting access to the monopine to authorized climbers that have completed RF safety training is required for Occupational environment compliance.

Certification

I, David H. Kiser, am the reviewer and approver of this report and am fully aware of and familiar with the Rules and Regulations of both the Federal Communications Commissions (FCC) and the Occupational Safety and Health Administration (OSHA) with regard to Human Exposure to Radio Frequency Radiation, specifically in accordance with FCC's OET Bulletin 65. I have reviewed this Radio Frequency Exposure Assessment report and believe it to be both true and accurate to the best of my knowledge.

