



File No. DR01-0014 R3
Location Map



EXHIBIT A

**POR. SECS. 3 & 10, T.9N., R.9E., M.D.M.
CAMERON PARK EAST SHOPPING CENTER
D-77**

US HWY 50

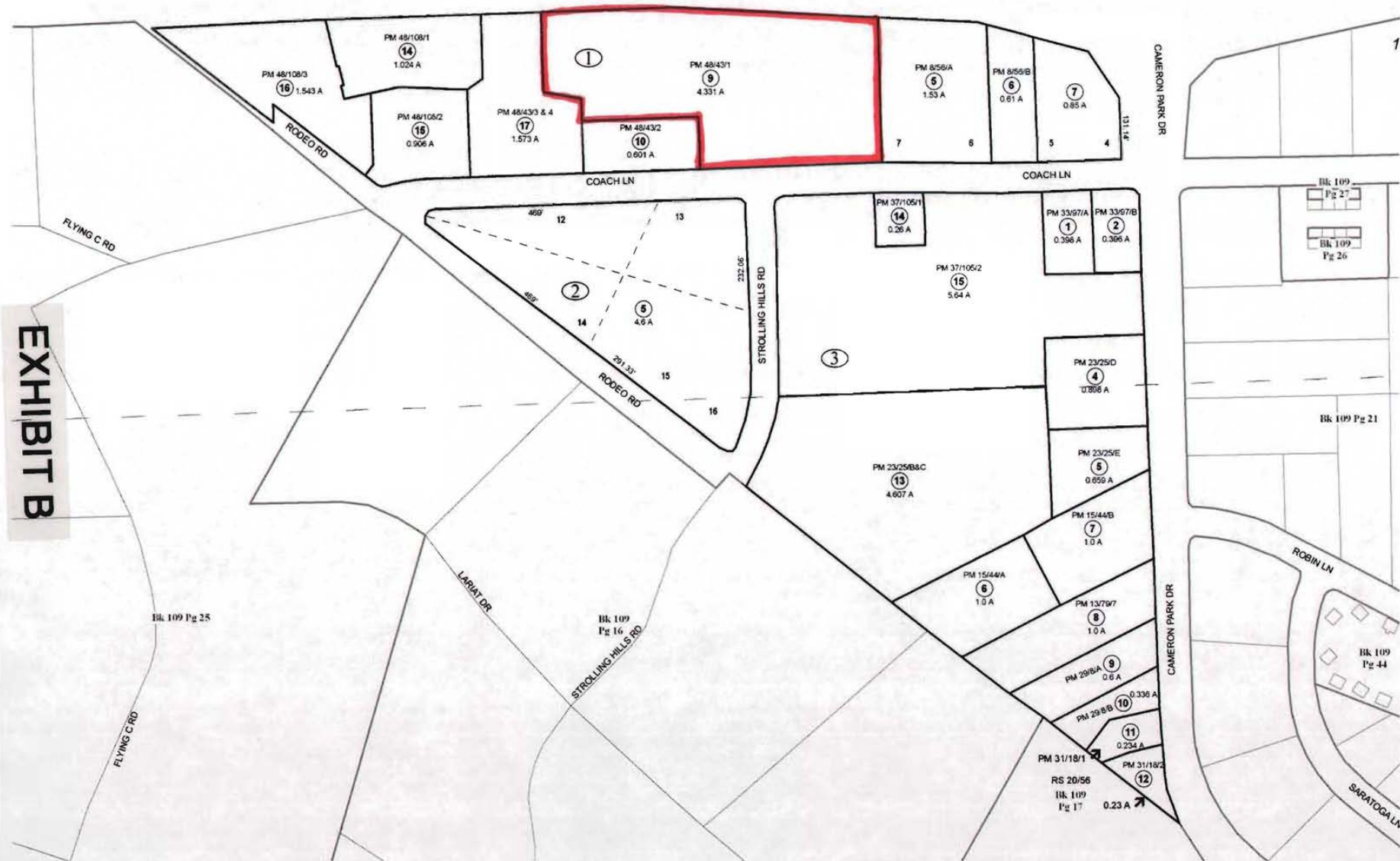


EXHIBIT B

EXHIBIT B

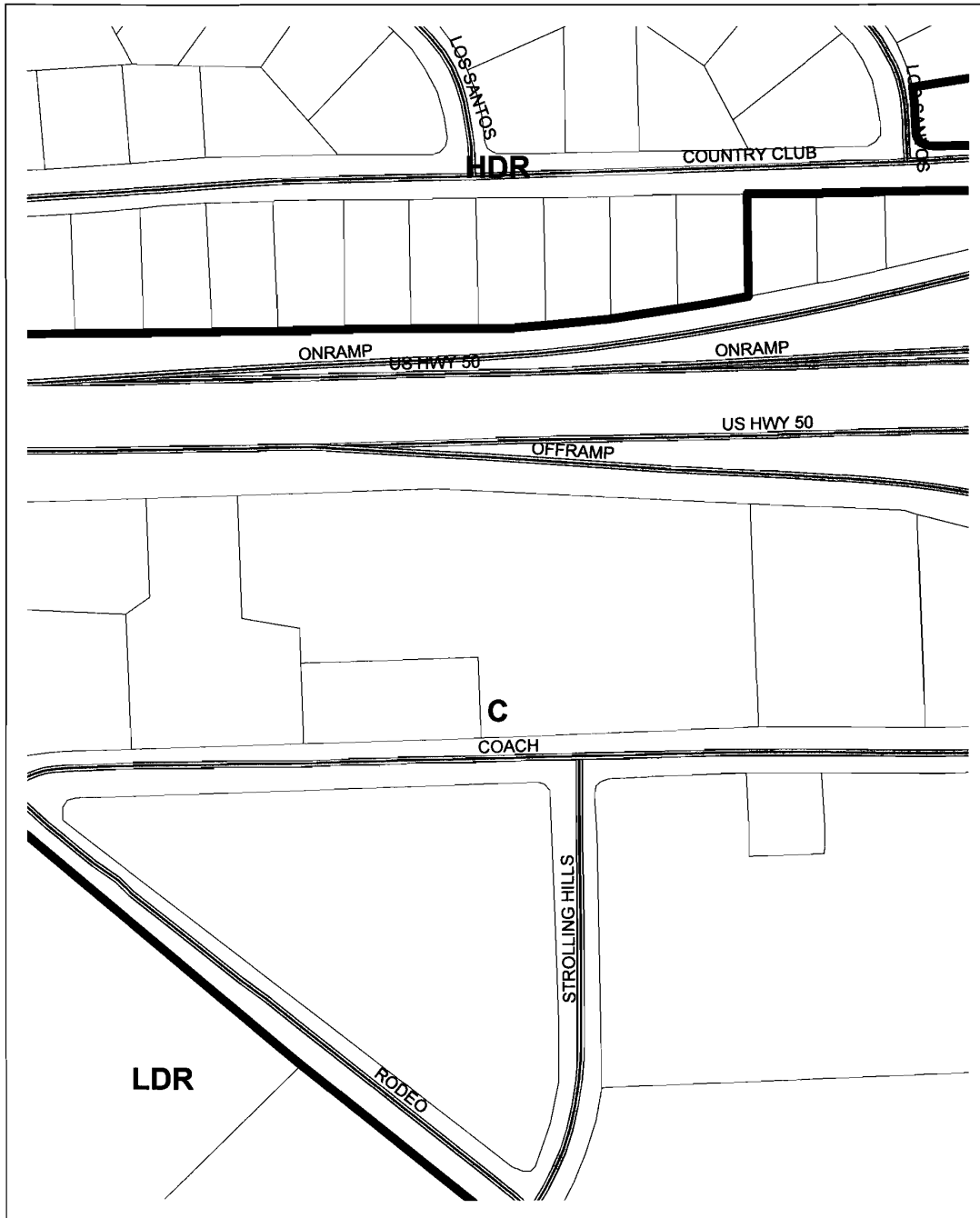
It is prepared by the El Dorado Co. for assessment purposes only. Area calculations are estimates. Users should verify items reappear.

Acreages Are Estimates

Adjacent Map Pages Shown in Grey Text
Assessor's Block Numbers Shown in Ellipses
Assessor's Parcel Numbers Shown in Circles

Rev. Mar. 16, 2006

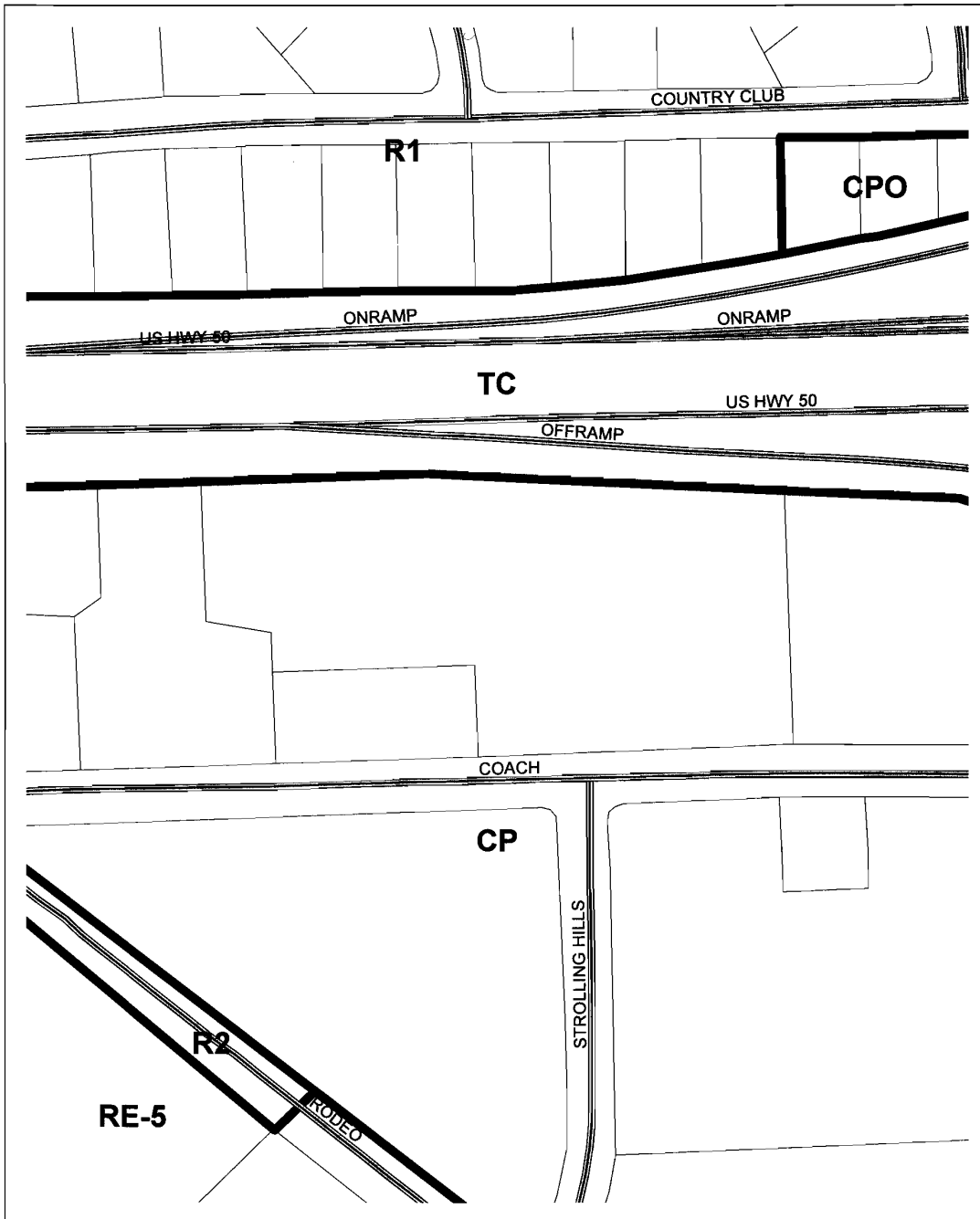
Assessor's Map
County of El



File No. DR01-0014 R3 0 55 110 220 330 440 Feet
General Plan



EXHIBIT C



File No. DR01-0014 R3
 Zoning

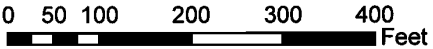
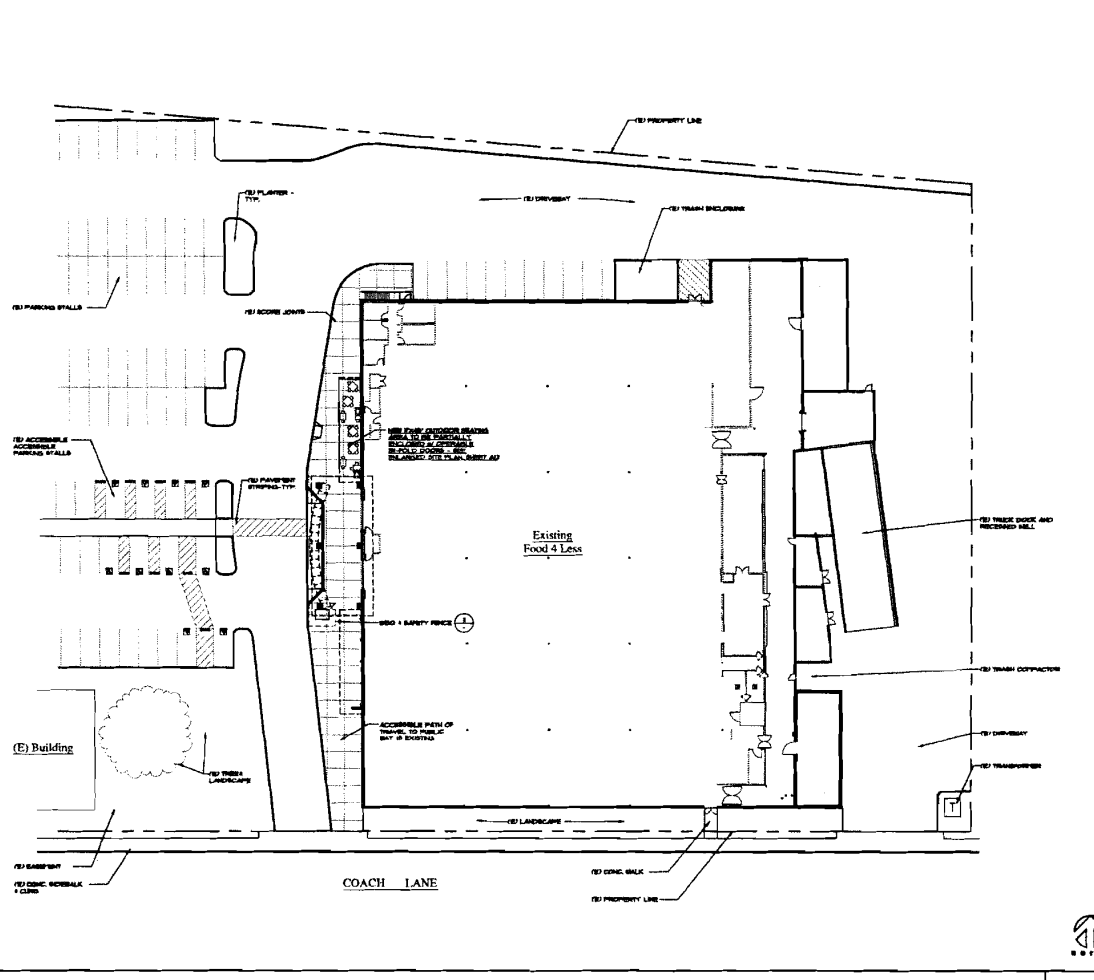
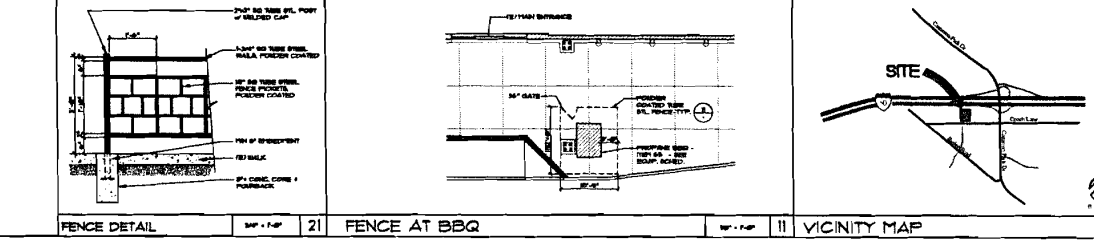


EXHIBIT D

EXHIBIT E

14 JUL 21 AM 9:35

RECEIVED
PLANNING DEPARTMENT



INTERIOR/EXTERIOR ALTERATION FOR:
FOOD 4 LESS
3333 COACH LANE,
CAMERON PARK, CA

DE KLEER + ASSOCIATES
INCORPORATED
303 (E) Street, San Diego, California 92101-1001
Tel: 619-594-1100

| | |
|-------------|-------------------|
| Sheet Title | OVERALL SITE PLAN |
| revisions | |
| Job | 140501 |
| date | June 19, 2014 |
| scale | NOTED |
| A1.1 | sheet |

DR 01-0014 R-3
EXHIBIT E

14 JUL 21 AM 9:36

RECEIVED
PLANNING DEPARTMENT



1 West Elevation



2 West Elevation - Main Entry



3 West Elevation - Main Entry

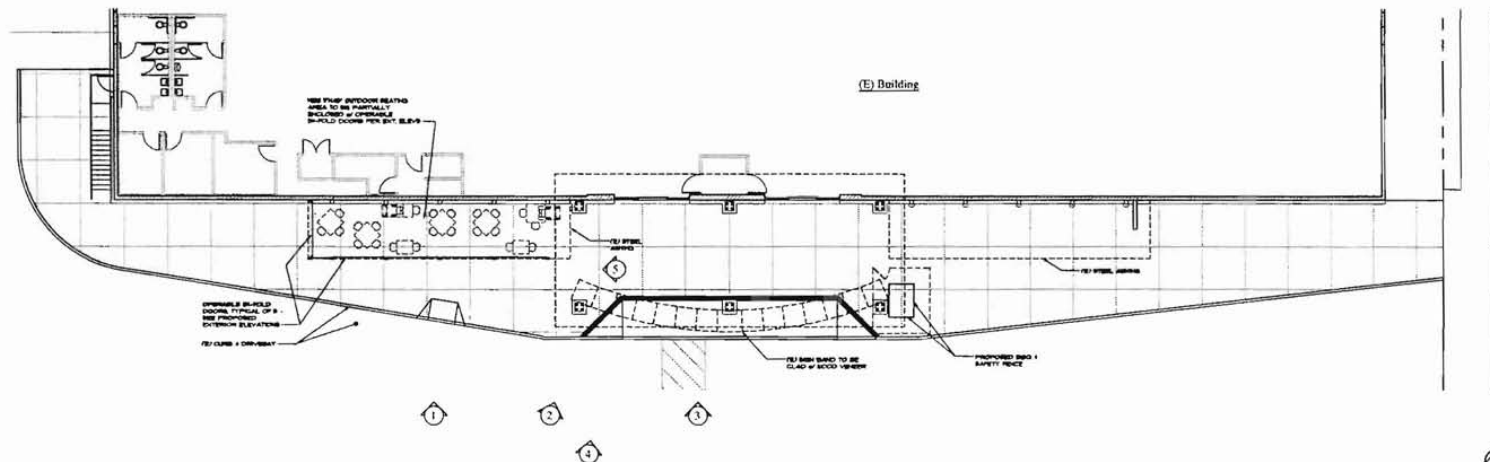


4 Overall West Elevation



5 Proposed Outdoor Seating Area

EXISTING ELEVATION - PHOTOS



PARTIAL SITE PLAN AT MAIN ENTRY

INTERIOR/EXTERIOR ALTERATION FOR:
FOOD 4 LESS
3333 COACH LANE,
CAMERON PARK, CA

DE KLEIR + ASSOCIATES
ARCHITECTS
3001 Laurel St. Ste. 100 Sacramento, CA 95828 TEL: 916.488.7878 FAX: 916.488.4588

sheet title
OVERALL SITE PLAN

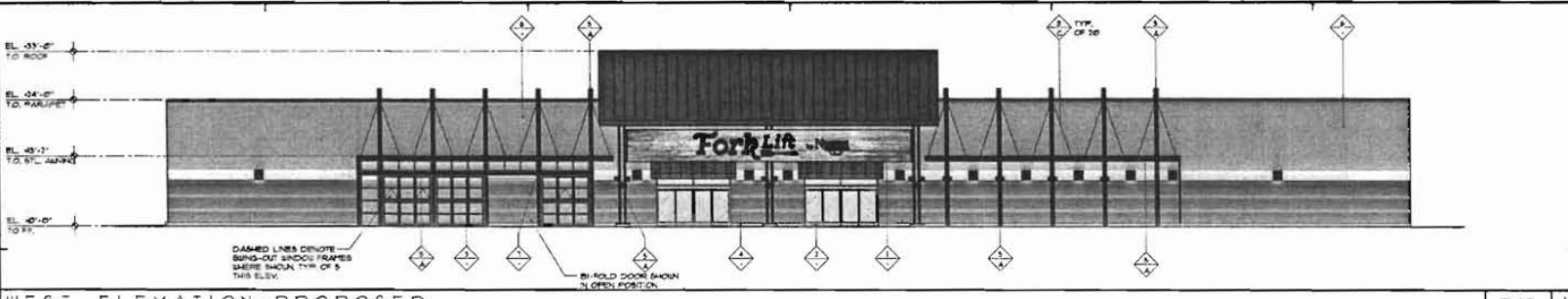
revisions

job: 142502
date: June 29, 2014
scale: NOTED

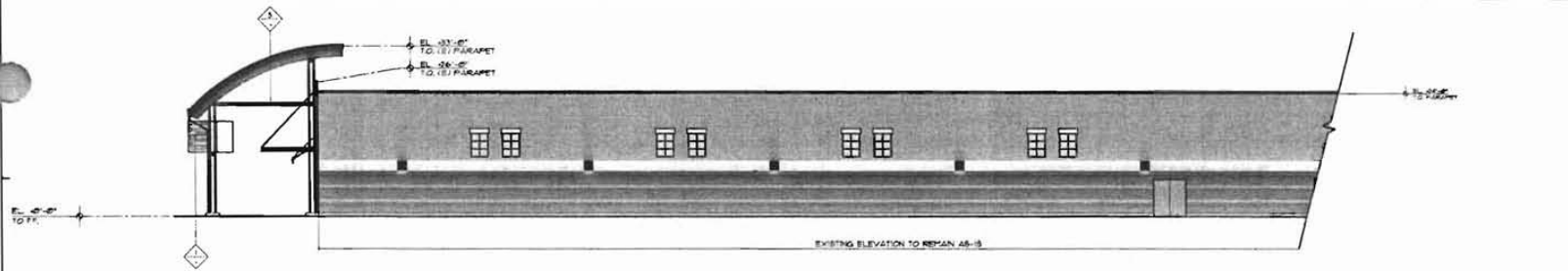
A1.2

sheet

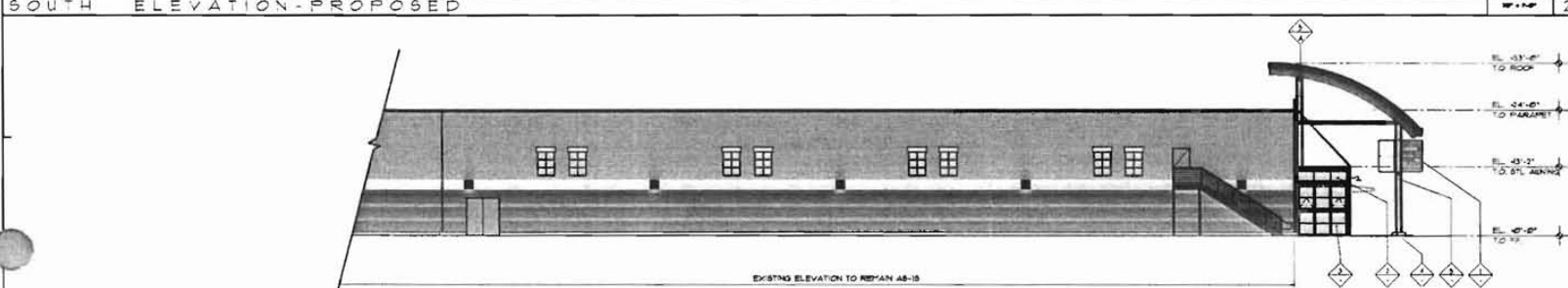
DR 01-0014 R-3



WEST ELEVATION - PROPOSED



SOUTH ELEVATION - PROPOSED



NORTH ELEVATION - PROPOSED



WEST ELEVATION - ENLARGEMENT

Color & Materials Legend

| Color | Material | Finish | Manufacturer | Color |
|-------|----------|---------------|--------------|---------------|
| 1 | Aluminum | Clear Anodize | Aluminum | Clear Anodize |
| 2 | Aluminum | Black | Aluminum | Black |
| 3 | Aluminum | Black | Aluminum | Black |
| 4 | Aluminum | Black | Aluminum | Black |
| 5 | Aluminum | Black | Aluminum | Black |
| 6 | Aluminum | Black | Aluminum | Black |
| 7 | Aluminum | Black | Aluminum | Black |
| 8 | Aluminum | Black | Aluminum | Black |
| 9 | Aluminum | Black | Aluminum | Black |
| 10 | Aluminum | Black | Aluminum | Black |
| 11 | Aluminum | Black | Aluminum | Black |
| 12 | Aluminum | Black | Aluminum | Black |
| 13 | Aluminum | Black | Aluminum | Black |
| 14 | Aluminum | Black | Aluminum | Black |
| 15 | Aluminum | Black | Aluminum | Black |
| 16 | Aluminum | Black | Aluminum | Black |
| 17 | Aluminum | Black | Aluminum | Black |
| 18 | Aluminum | Black | Aluminum | Black |
| 19 | Aluminum | Black | Aluminum | Black |
| 20 | Aluminum | Black | Aluminum | Black |
| 21 | Aluminum | Black | Aluminum | Black |
| 22 | Aluminum | Black | Aluminum | Black |
| 23 | Aluminum | Black | Aluminum | Black |
| 24 | Aluminum | Black | Aluminum | Black |
| 25 | Aluminum | Black | Aluminum | Black |
| 26 | Aluminum | Black | Aluminum | Black |
| 27 | Aluminum | Black | Aluminum | Black |
| 28 | Aluminum | Black | Aluminum | Black |
| 29 | Aluminum | Black | Aluminum | Black |
| 30 | Aluminum | Black | Aluminum | Black |
| 31 | Aluminum | Black | Aluminum | Black |
| 32 | Aluminum | Black | Aluminum | Black |
| 33 | Aluminum | Black | Aluminum | Black |
| 34 | Aluminum | Black | Aluminum | Black |
| 35 | Aluminum | Black | Aluminum | Black |
| 36 | Aluminum | Black | Aluminum | Black |
| 37 | Aluminum | Black | Aluminum | Black |
| 38 | Aluminum | Black | Aluminum | Black |
| 39 | Aluminum | Black | Aluminum | Black |
| 40 | Aluminum | Black | Aluminum | Black |
| 41 | Aluminum | Black | Aluminum | Black |
| 42 | Aluminum | Black | Aluminum | Black |
| 43 | Aluminum | Black | Aluminum | Black |
| 44 | Aluminum | Black | Aluminum | Black |
| 45 | Aluminum | Black | Aluminum | Black |
| 46 | Aluminum | Black | Aluminum | Black |
| 47 | Aluminum | Black | Aluminum | Black |
| 48 | Aluminum | Black | Aluminum | Black |
| 49 | Aluminum | Black | Aluminum | Black |
| 50 | Aluminum | Black | Aluminum | Black |
| 51 | Aluminum | Black | Aluminum | Black |
| 52 | Aluminum | Black | Aluminum | Black |
| 53 | Aluminum | Black | Aluminum | Black |
| 54 | Aluminum | Black | Aluminum | Black |
| 55 | Aluminum | Black | Aluminum | Black |
| 56 | Aluminum | Black | Aluminum | Black |
| 57 | Aluminum | Black | Aluminum | Black |
| 58 | Aluminum | Black | Aluminum | Black |
| 59 | Aluminum | Black | Aluminum | Black |
| 60 | Aluminum | Black | Aluminum | Black |
| 61 | Aluminum | Black | Aluminum | Black |
| 62 | Aluminum | Black | Aluminum | Black |
| 63 | Aluminum | Black | Aluminum | Black |
| 64 | Aluminum | Black | Aluminum | Black |
| 65 | Aluminum | Black | Aluminum | Black |
| 66 | Aluminum | Black | Aluminum | Black |
| 67 | Aluminum | Black | Aluminum | Black |
| 68 | Aluminum | Black | Aluminum | Black |
| 69 | Aluminum | Black | Aluminum | Black |
| 70 | Aluminum | Black | Aluminum | Black |
| 71 | Aluminum | Black | Aluminum | Black |
| 72 | Aluminum | Black | Aluminum | Black |
| 73 | Aluminum | Black | Aluminum | Black |
| 74 | Aluminum | Black | Aluminum | Black |
| 75 | Aluminum | Black | Aluminum | Black |
| 76 | Aluminum | Black | Aluminum | Black |
| 77 | Aluminum | Black | Aluminum | Black |
| 78 | Aluminum | Black | Aluminum | Black |
| 79 | Aluminum | Black | Aluminum | Black |
| 80 | Aluminum | Black | Aluminum | Black |
| 81 | Aluminum | Black | Aluminum | Black |
| 82 | Aluminum | Black | Aluminum | Black |
| 83 | Aluminum | Black | Aluminum | Black |
| 84 | Aluminum | Black | Aluminum | Black |
| 85 | Aluminum | Black | Aluminum | Black |
| 86 | Aluminum | Black | Aluminum | Black |
| 87 | Aluminum | Black | Aluminum | Black |
| 88 | Aluminum | Black | Aluminum | Black |
| 89 | Aluminum | Black | Aluminum | Black |
| 90 | Aluminum | Black | Aluminum | Black |
| 91 | Aluminum | Black | Aluminum | Black |
| 92 | Aluminum | Black | Aluminum | Black |
| 93 | Aluminum | Black | Aluminum | Black |
| 94 | Aluminum | Black | Aluminum | Black |
| 95 | Aluminum | Black | Aluminum | Black |
| 96 | Aluminum | Black | Aluminum | Black |
| 97 | Aluminum | Black | Aluminum | Black |
| 98 | Aluminum | Black | Aluminum | Black |
| 99 | Aluminum | Black | Aluminum | Black |
| 100 | Aluminum | Black | Aluminum | Black |

RECEIVED
PLANNING DEPARTMENT
JUL 21 AM 9:36

INTERIOR/EXTERIOR ALTERATION FOR
Fork Lift
3333 COACH LANE
CAMERON PARK, CA



DE K L E E R + ASSOCIATES
INCORPORATED
3301 LINDSEY DR. SUITE 100, SACRAMENTO, CA 95835 TEL: 916.738.3888

Sheet Title
PROPOSED EXTERIOR ELEVATIONS

Revisions

Date: 10/20/07
Scale: As Shown
Notes: NOTED

A3.1

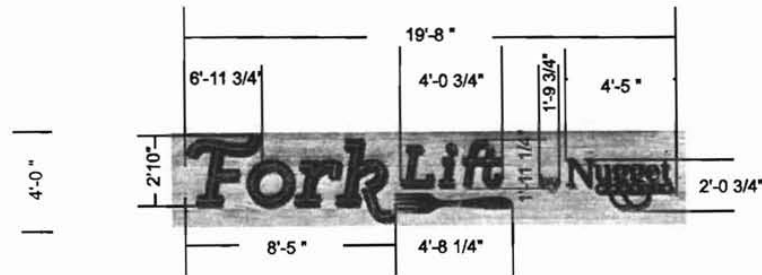
Sheet

DR 01-0014 R-3

EXHIBIT F



South Elevation



313 Timber Drive
 Vacaville CA 95688
 Phone: (707) 455-0286
 Fax: (866) 910-4740

This is an original unpublished piece of artwork intended only for the recipient, and not to be viewed by any other individual without the express consent of Premier Sign Company.

Job Name:
 Forklift by Nugget

Address:

City/State:
 Cameron Park CA

Drawing No.: Preliminary
 Drawing Date: 7/22/2014
 Revisions:
 A _____
 B _____
 C _____

Client Approval:

Sheet 1 of 3
 File: Premier S Co

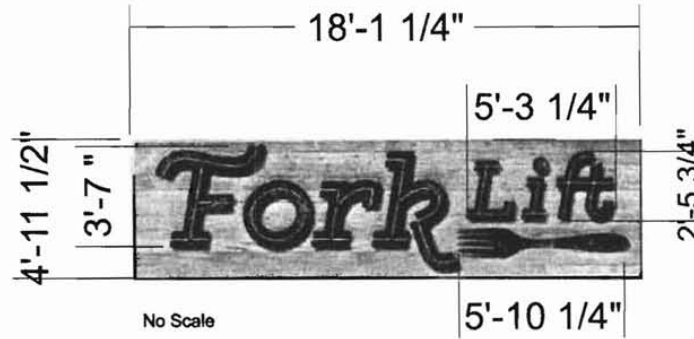
©2013 Premier Sign Company

EXHIBIT F

Scale: 1/8" = 1'



North Elevation



313 Timber Drive
Vacaville CA 95688
Phone: (707) 455-0286
Fax: (866) 910-4740

This is an original finished piece of artwork, intended only for the recipient, and not to be viewed by any other individual without the express consent of Premier Sign Company.

Job Name:
Forklift by Nugget

Address:

City/State:
Cameron Park

Drawing No.: Preliminary
Drawing Date: 7/22/2014

Revisions:
A _____
B _____
C _____

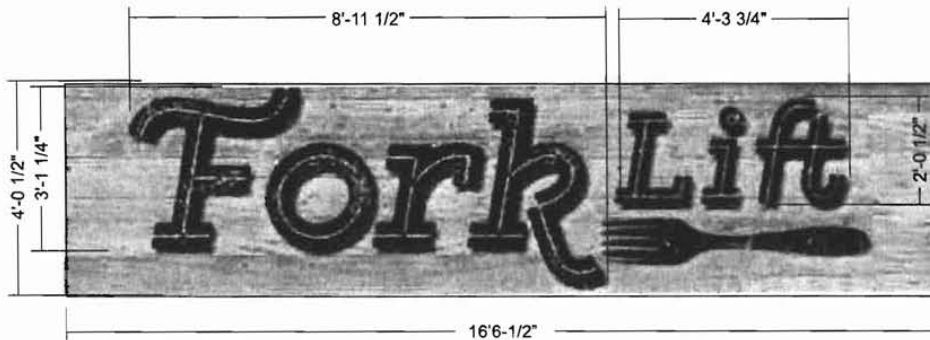
Client Approval:

Sheet 2 of 3
File: Premier 8 Co

Scale: 1/2" = 10'



Fabricate (2) sets of letters for monument sign.



313 Timber Drive
Vacaville CA 95688
Phone: (707) 455-0286
Fax: (866) 910-4740

This is an original unpublished piece of artwork, intended only for the recipient, and not to be viewed by any other individual without the express consent of Premier Sign Company.

Job Name:
Forklift by Nugget

Address:

City/State:
Cameron Park

Drawing No.: Preliminary
Drawing Date: 7/22/2014
Revisions:

A _____
B _____
C _____

Client Approval:

Sheet 3 of 3
File: Premier 3 Co