



El Dorado County: Shingle Springs to El Dorado

DRAFT

Legend

Signs

- Proposed for 2015
- Future year project

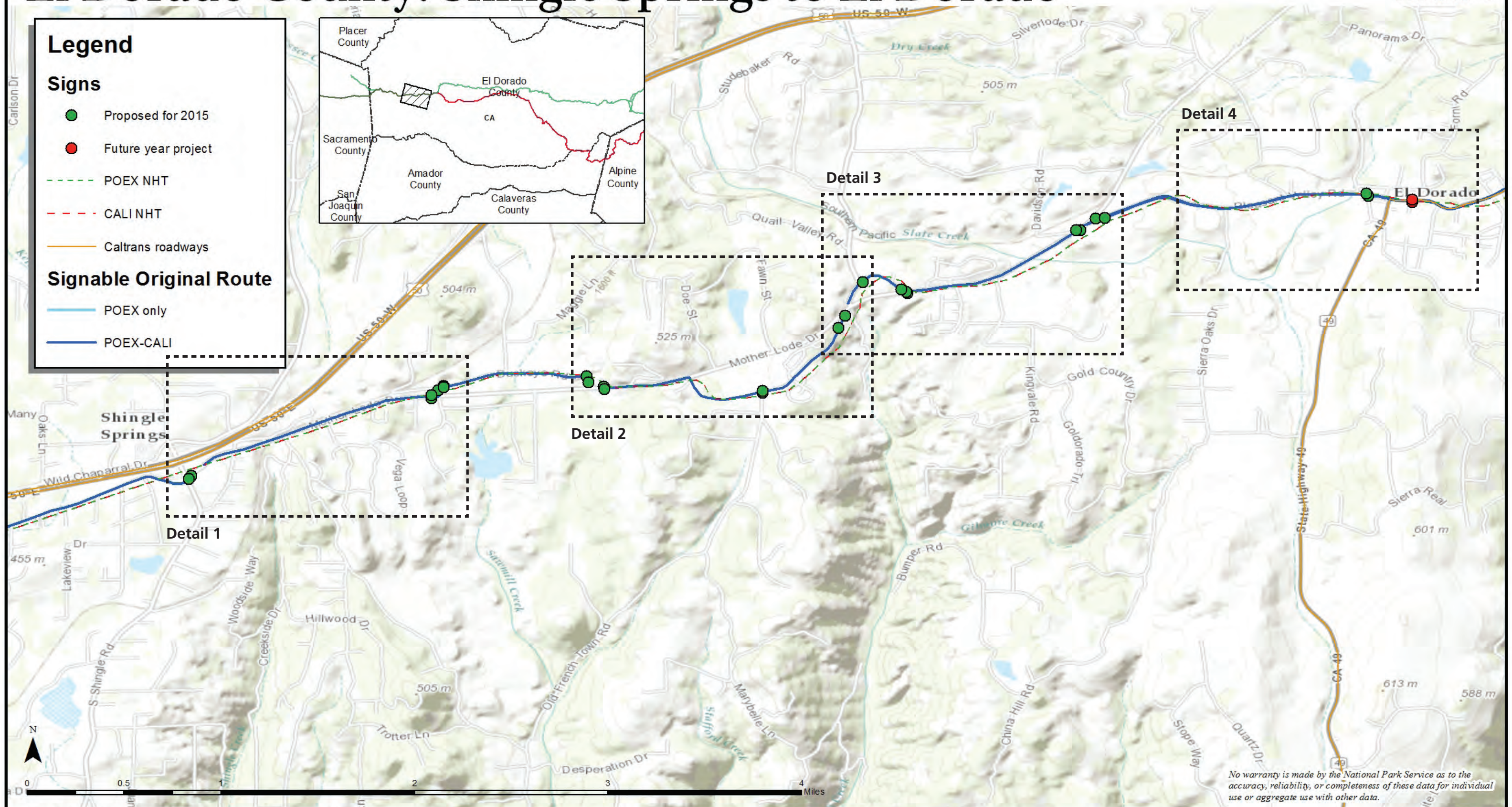
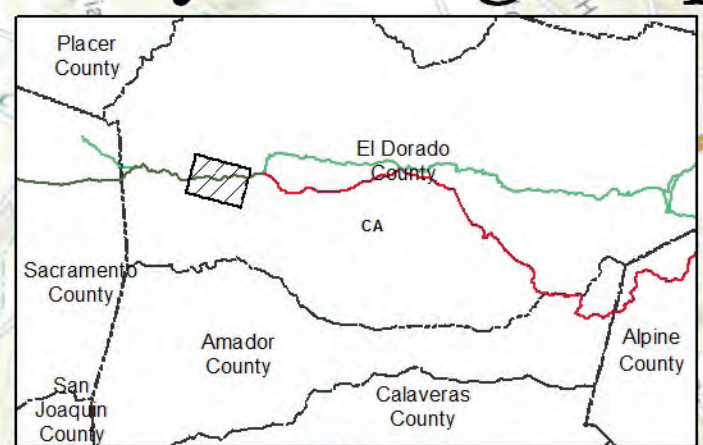
--- POEX NHT

--- CALI NHT

— Caltrans roadways

Signable Original Route

- POEX only
- POEX-CALI



No warranty is made by the National Park Service as to the accuracy, reliability, or completeness of these data for individual use or aggregate use with other data.



El Dorado County: Shingle Springs to El Dorado

DETAIL 1

DRAFT

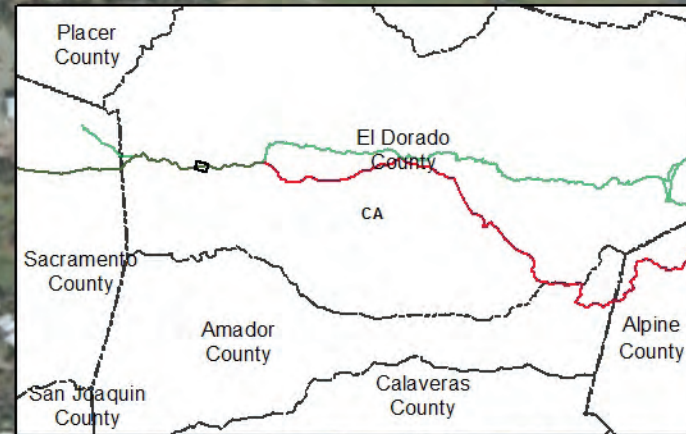
Legend

Signs

- Proposed for 2015
- Future year project
- POEX NHT
- CALI NHT
- Caltrans roadways

Signable Original Route

- POEX only
- POEX-CALI



No warranty is made by the National Park Service as to the accuracy, reliability, or completeness of these data for individual use or aggregate use with other data.



El Dorado County: Shingle Springs to El Dorado

DETAIL 2

DRAFT

Legend

Signs

- Proposed for 2015
- Future year project

--- POEX NHT
--- CALI NHT

— Caltrans roadways

Signable Original Route

- POEX only
- POEX-CALI



No warranty is made by the National Park Service as to the accuracy, reliability, or completeness of these data for individual use or aggregate use with other data.



El Dorado County: Shingle Springs to El Dorado

DETAIL 3

DRAFT

Legend

Signs

- Proposed for 2015
- Future year project

--- POEX NHT
--- CALI NHT

— Caltrans roadways

Signable Original Route

- POEX only
- POEX-CALI



No warranty is made by the National Park Service as to the accuracy, reliability, or completeness of these data for individual use or aggregate use with other data.



El Dorado County: Shingle Springs to El Dorado

DETAIL 4

DRAFT

Legend

Signs

- Proposed for 2015
- Future year project

--- POEX NHT

--- CALI NHT

--- Caltrans roadways

Signable Original Route

- POEX only
- POEX-CALI



No warranty is made by the National Park Service as to the accuracy, reliability, or completeness of these data for individual use or aggregate use with other data.