



RESOLUTION NO. 014-2013

OF THE BOARD OF SUPERVISORS OF THE COUNTY OF EL DORADO

Adjustment of 2010 Census Designated Urban Boundaries for Transportation Purposes

WHEREAS, the County of El Dorado is a recognized jurisdiction within the State of California; and

WHEREAS, the United States Census Bureau collects socio-economic data every ten years; and

WHEREAS, the United States Census Bureau identifies urban areas based on new census population data; and

WHEREAS, on March 26, 2012 the United States Census Bureau released the 2010 Urban Areas; and

WHEREAS, the Federal Highway Administration (FHWA) has released guidance on adjusting urban area boundaries for purposes of urban transportation funding; and

WHEREAS, the California Department of Transportation (Caltrans) has launched the statewide process of adjusting the urban areas identified in the 2010 Census; and

WHEREAS, on December 21, 2012, the 2010 Caltrans Urban Boundary maps were forwarded to the jurisdictions for either their acceptance of the new urban boundary limits or to make changes to the limits; and

WHEREAS, Section 101(a) of Title 23 U.S. Code allows for the State and local officials in cooperation with each other to adjust the 2010 Census designated urban area boundaries, subject to approval by the Secretary of Transportation; and

WHEREAS, Caltrans, on behalf of the FHWA, requested the County of El Dorado to adjust, if necessary, the 2010 Census Designated Urban Boundaries; and

WHEREAS, the County of El Dorado staff in conjunction with the El Dorado County Transportation Commission (EDCTC) staff determined that at a minimum the 2010 Census Designated Urban Boundaries should encompass the County of El Dorado's General Plan designated Community Regions where adequate roadways, utilities, and other public service infrastructure become available and wildfire hazards are mitigated as required by an approved Fire Safe Plan.

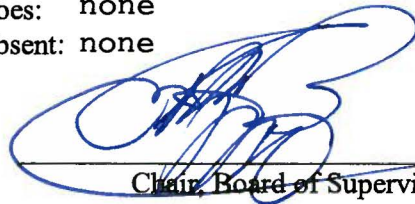
NOW, THEREFORE, BE IT RESOLVED, that the County Board of Supervisors of the County of El Dorado approves the adjusted urban area, as delineated by the 2010 County of El Dorado Modified Urban Boundary line on Attachment B, for El Dorado County and authorizes submittal to Caltrans on this date. This approval is for transportation funding purposes only, and not intended for any other purpose, and it specifically does not change or influence any General Plan landuse boundaries.

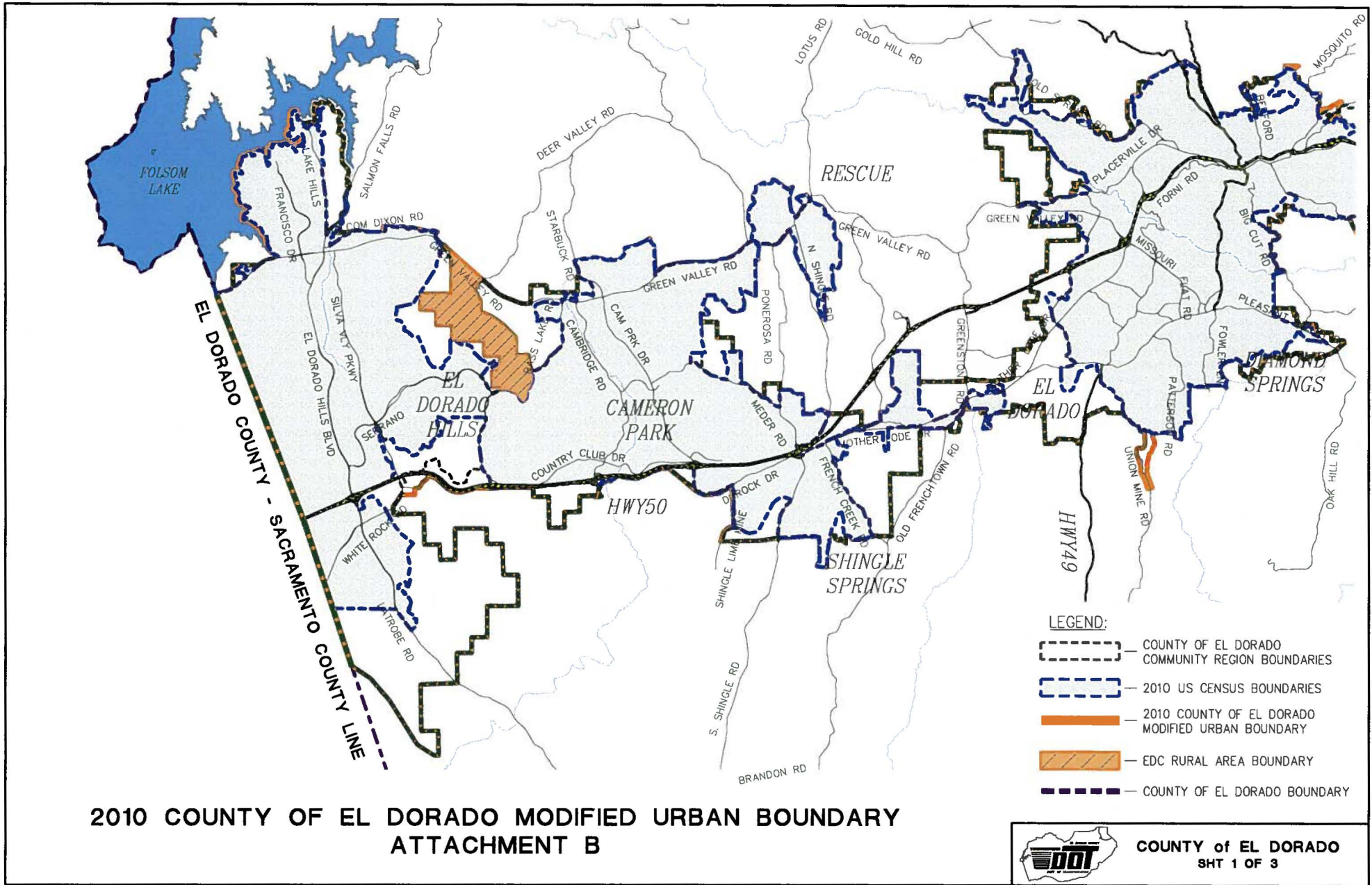
PASSED AND ADOPTED by the Board of Supervisors of the County of El Dorado at a regular meeting of said Board, held the 12 day of February, 2013 by the following vote of said Board:

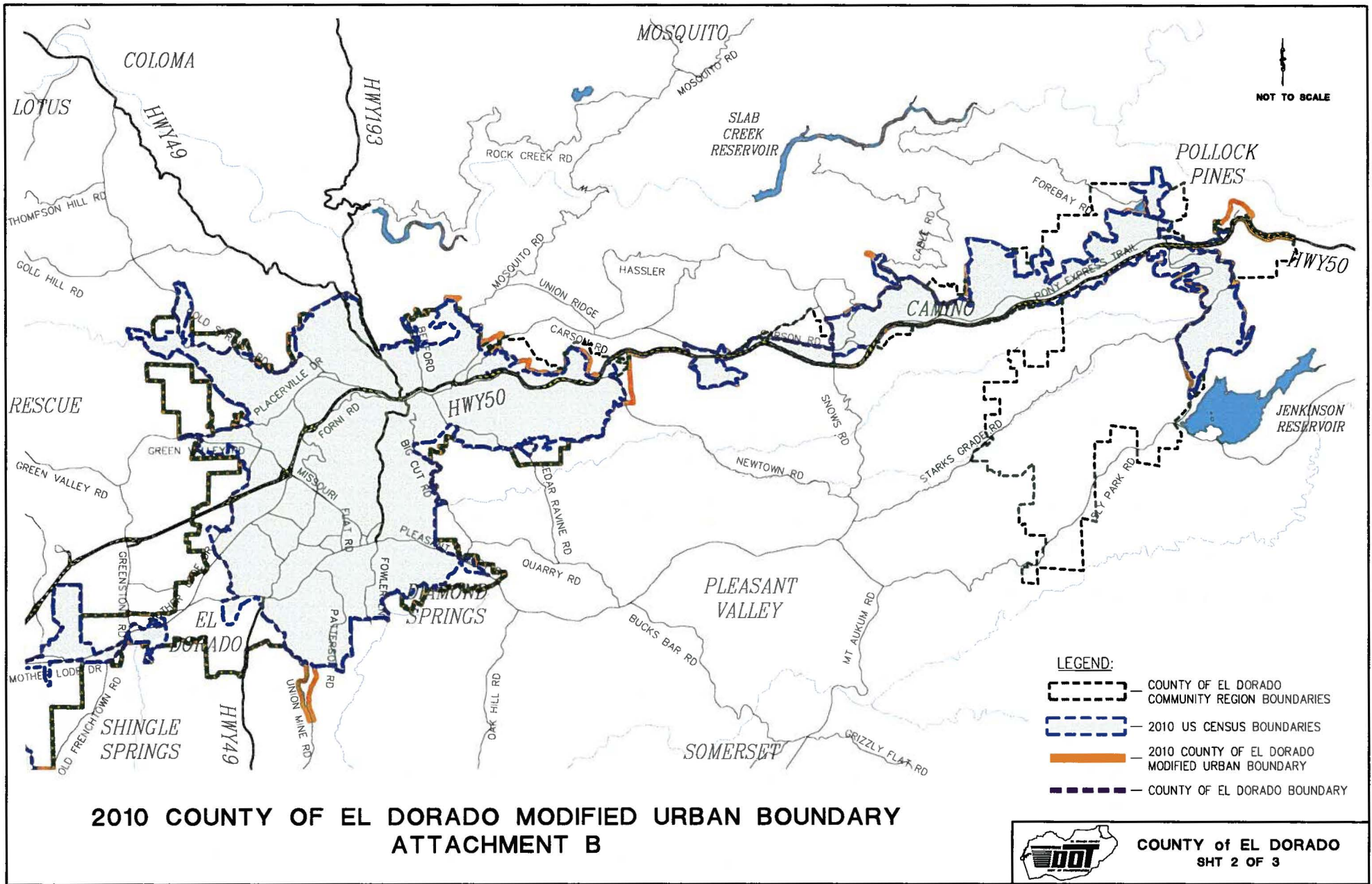
Attest:
James S. Mitrison
Clerk of the Board of Supervisors

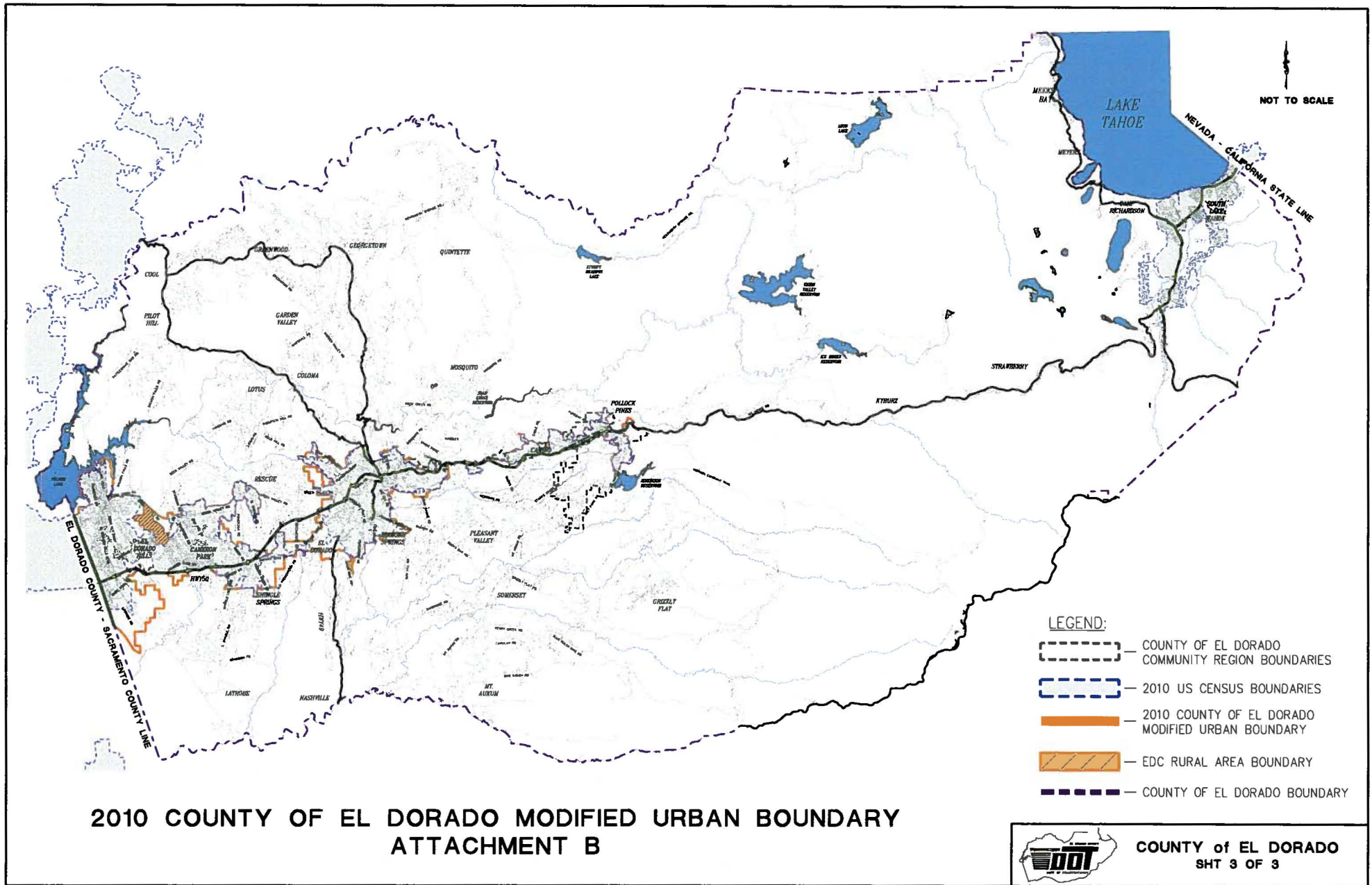
Ayes: Briggs, Santiago, Mikulaco, Nutting, Veerkam
Noes: none
Absent: none

By:  _____
Deputy Clerk

 _____
Chair, Board of Supervisors
Ron Briggs







**2010 COUNTY OF EL DORADO MODIFIED URBAN BOUNDARY
ATTACHMENT B**



COUNTY of EL DORADO
SHT 3 OF 3