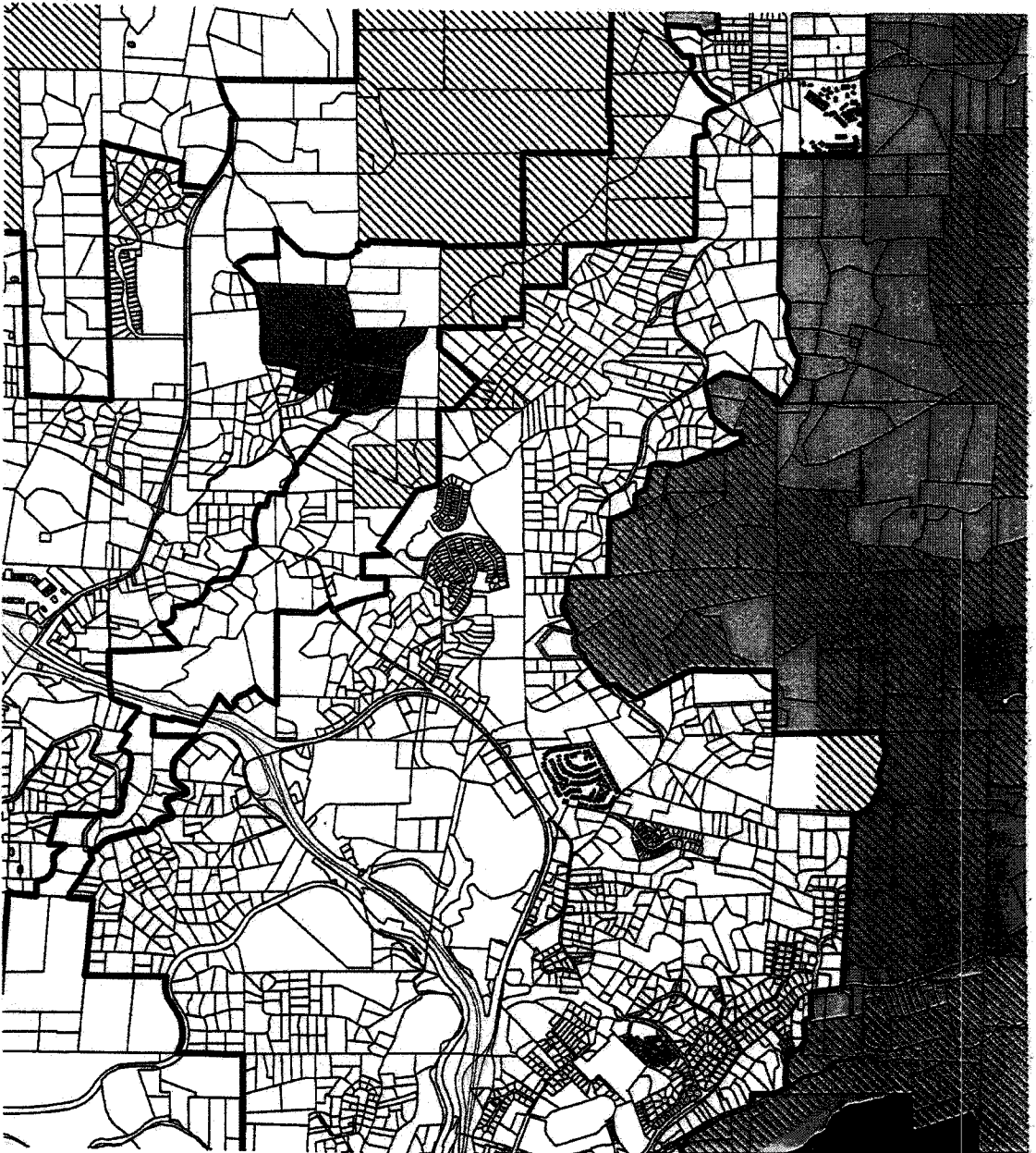
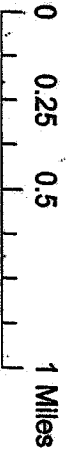
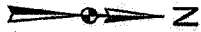


PC 2/26/09  
 #9 - submitted  
 by applicant at  
 meeting

# EL DORADO COUNTY

LIVING CARE  
 APN 323-250-42  
 12-29-08

- Legend**
- STREET CLASSIFICATION
    - HWY
    - MAJOR
  - EXISTING AG ZONING
    - /// A
    - /// AE
    - /// PA
    - /// RA-160
    - /// RA-20
    - /// RA-40
    - /// RA-60
    - /// SA-10
  - COMMUNITY REGIONS
    -
  - RURAL CENTERS
    -
  - PLATTED LANDS
    -
  - AGRICULTURAL DISTRICTS
    -
  - LAND USE DESIGNATION
    - OS
    - AL
    - NR
    - RR
    - AP
    - C
    - HDR
    - I
    - LDR
    - MDR
    - MFR
    - PF
    - RAID
    - TR



INFORMATION SHOWN ON THIS MAP HAS BEEN COMPILED FROM UNVERIFIED PUBLIC AND PRIVATE SOURCES AND IS ILLUSTRATIVE ONLY. NO REPRESENTATION IS MADE AS TO THE ACCURACY OF THIS INFORMATION.

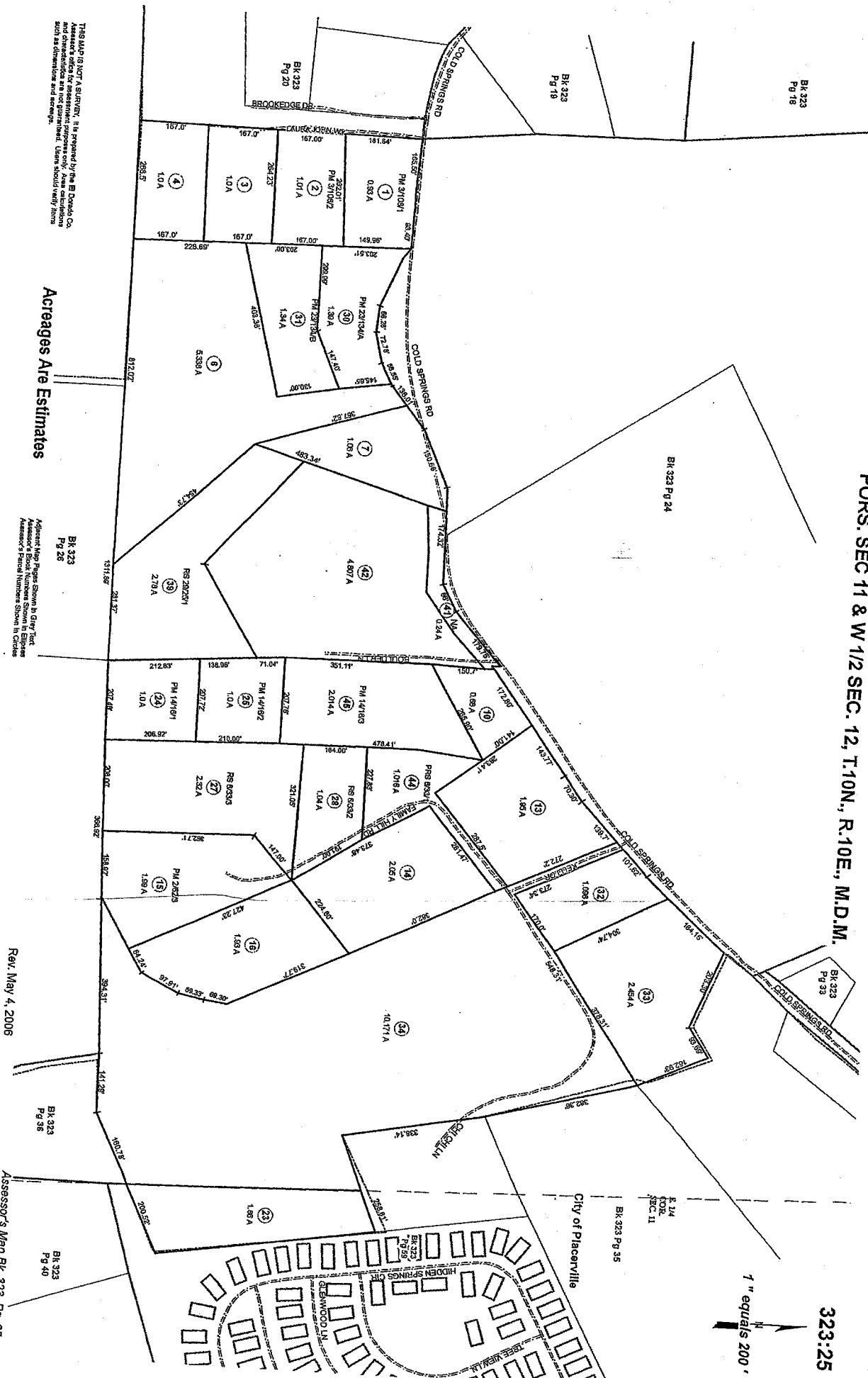
MAP PREPARED BY  
**GENE E. THORNE & ASSOCIATES, INC.**  
Professional Geographers & Surveyors - License No. 10000

Exhibit F

PORS. SEC 11 & W 1/2 SEC. 12, T.10N., R.10E., M.D.M.

323:25

1" equals 200'



Acreages Are Estimates

THIS MAP IS NOT A SURVEY. It is prepared by the El Dorado Co. Assessor's office for assessment purposes only. Area calculations and other data are not guaranteed. Users should verify facts such as dimensions and acreage.

BK 323 Pg 26

Adjacent Map Pages Shown in Gray. Tax Assessor's Block Numbers Shown in Blue. Assessor's Parcel Numbers Shown in Circles

Rev. May 4, 2006

BK 323 Pg 36

BK 323 Pg 40

Assessor's Map BK 323 Pg. 25 County of El Dorado, CA

City of Placerville

E 1/4 CODE SEC. II

BK 323 Pg 35