

Memo

To: Board of Supervisors
Cindy Keck, Clerk of the Board

From: Jim Wassner, Operations Supervisor, *JW*
Code Enforcement Unit x6539

Date: 3/3/2008

Re: Code Enforcement Unit

2008 MAR -3 PM 2:16

RECEIVED
BOARD OF SUPERVISORS
EL DORADO COUNTY

After reviewing the department budget summaries I found mention of the fact that we work cases that "may effect multiple departments". I wanted you to be aware of the extent to which the Code Enforcement Unit assists many other agencies. I have prepared a brief Power Point presentation regarding the various County Agencies that are supported by the Code Enforcement Unit. I have included copies of that presentation and the Word document with the comments relative to each page of the presentation. I have to be in criminal court tomorrow and may not be able to be present to give this presentation when the time comes to discuss the Code Enforcement Unit.

1.) On page 42 of your department budget summaries the last line under Code Compliance states "*Code Compliance has also been used for the initial investigation and subsequent tracking of a complaint that may affect multiple departments*". You may not be aware of the extent to which the Code Enforcement Unit assists other County Agencies.

2.) Besides enforcing the obvious County Building, Zoning, and Code Enforcement Ordinance violations, this graph shows the other County Agencies we work hand in hand with to assist them by our expertise in Code Enforcement issues. In addition to those Agencies shown on the graph, we also assist the CA Dept of Fish & Game, CA Dept of Housing & Community Development (Mobile Home Parks), CA Bureau of Automotive Repair and the CA State Contractor's License Board.

3.) One of our most obvious collaborations is with the Sheriff's Department. County Ordinance violations are misdemeanors and are often accompanied at the site by violations of other State laws such as the Penal Code. The CE Unit investigates and forwards our own cases to the District Attorney, who has assigned a Deputy District Attorney to assist us. This site pictured in El Dorado Hills was referred by the S/O after a methamphetamine case. The family room pictured is as it appeared while the dwelling was being occupied by the owner. The house subsequently burned beyond repair and has been replaced by a different owner.

4.) The Code Enforcement Unit assists Adult Protective Services by enforcing codes & ordinances relative to health & safety, public nuisances and illegal trailer occupancy. Enforcement of these violations can help by removing a financial abuser from an elder client's property and can also create an incentive for friends and family to step up and help the elder client to regain control of their surroundings in "hoarding" cases. In extreme cases, enforcement of the CA Health & Safety Code can be used to remove an elder client from unsafe conditions in the home.

5.) In much the same way as APS, Child Protective Services staff contact us to help work cases with them whenever they have safety or sanitation issues in dwellings where children reside.

6.) The CE Unit often works with Animal Control, as these types of cases can also generate zoning violations for noise issues and the sheer number of animals that are being kept. 50+ cats inside the house of an elder client can also require that APS be brought into the case.

7.) Code Enforcement staff respond to cases of no septic system to a trailer for Environmental Health, as the bigger issue is the occupancy of the trailer without the required permit. When solid waste goes beyond the realm of the Environmental Health ordinances, the Code Enforcement Unit will take over the case as a public nuisance. This prevents the County from having two agencies spending time on what is essentially a single issue. After the Angora Fire, CE Unit staff were instrumental in doing plan checks for replacement homes and also administered the abatement process used to remove unsafe trees from properties.

8.) CE Unit staff work very closely with Building and DOT staff to help the County comply with grading / erosion control issues and requirements of our NPDES program for storm water that is regulated by the State Regional Water Quality Control Board.

9.) We respond to immediate requests from local Fire Agencies to inspect buildings for structural and/or utility damage that have been struck by vehicles or falling trees and follow up on burned structures that may have become a hazard or an attractive nuisance to children.

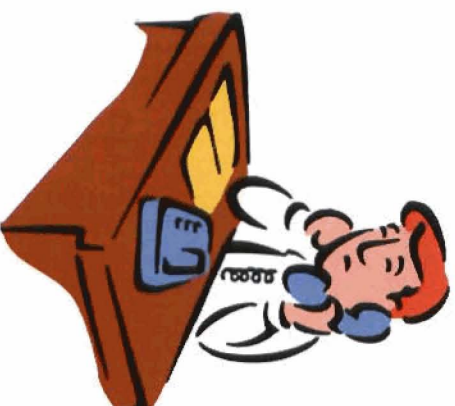
10.) The following photos are a glimpse into our many success stories with just two of our before and after case photos.

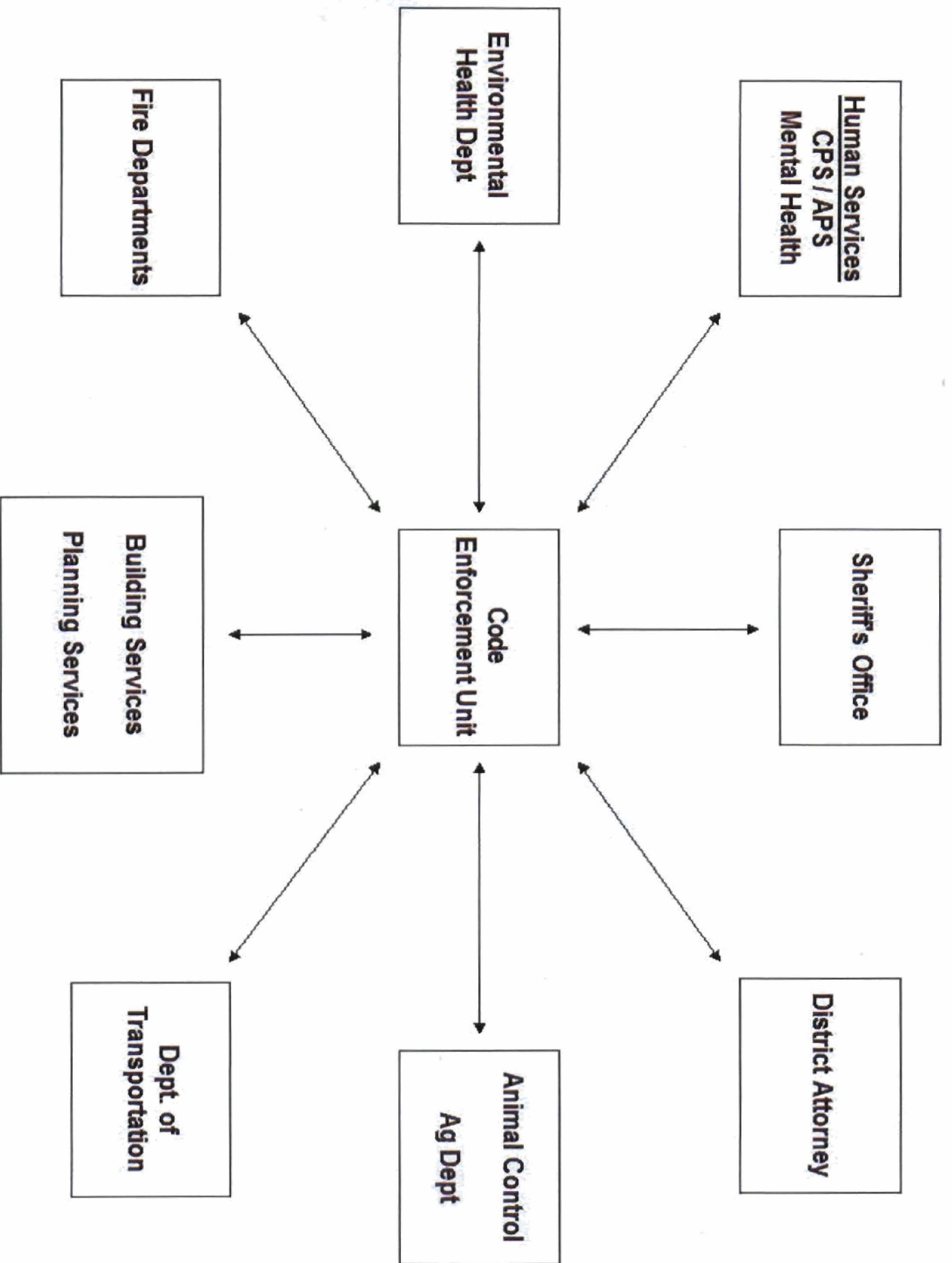
The Board faces some very difficult decisions in your attempt to balance the budget in these hard economic times. Elimination of the Code Enforcement Unit is unthinkable, as I do not know who would respond to the more than 30 new cases of ordinance violations we open each month. The number of these cases generated will only increase once the Zoning Ordinance has been updated for the General Plan. We anticipate additional cases to be generated for issues such as the keeping of animals, community area noise restrictions and oak canopy protection. This is in addition to our backlog of current cases that is currently being addressed.

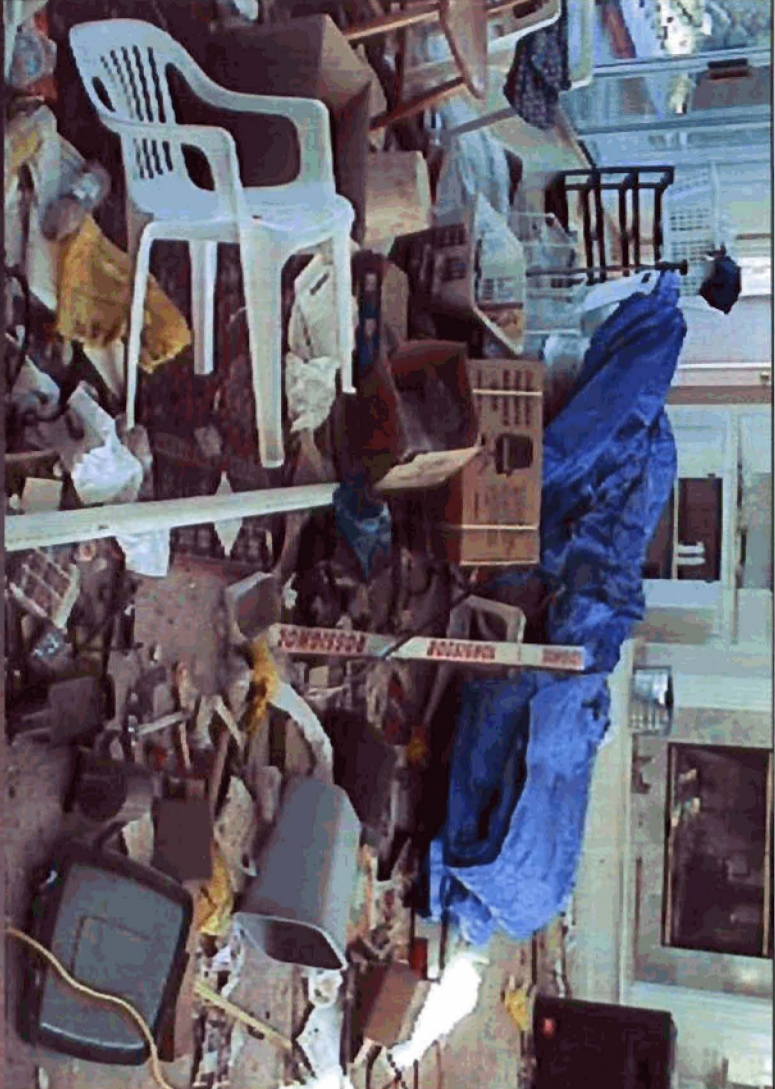
Reducing the budget of the Code Enforcement Unit would have a negative impact that would far out weigh the budgetary savings from the loss of a couple of positions. Every County employee I have spoken to recently regarding the budget has said they would much rather see County wide mandatory time off scheduled for all employees throughout the year instead of cutting individual positions to help eliminate our budgetary problems.

Code Enforcement Unit

- A point of contact for complaints to the County on various issues
- Coordinates investigations to help prevent multiple or conflicting inspections
- Assists allied Agencies





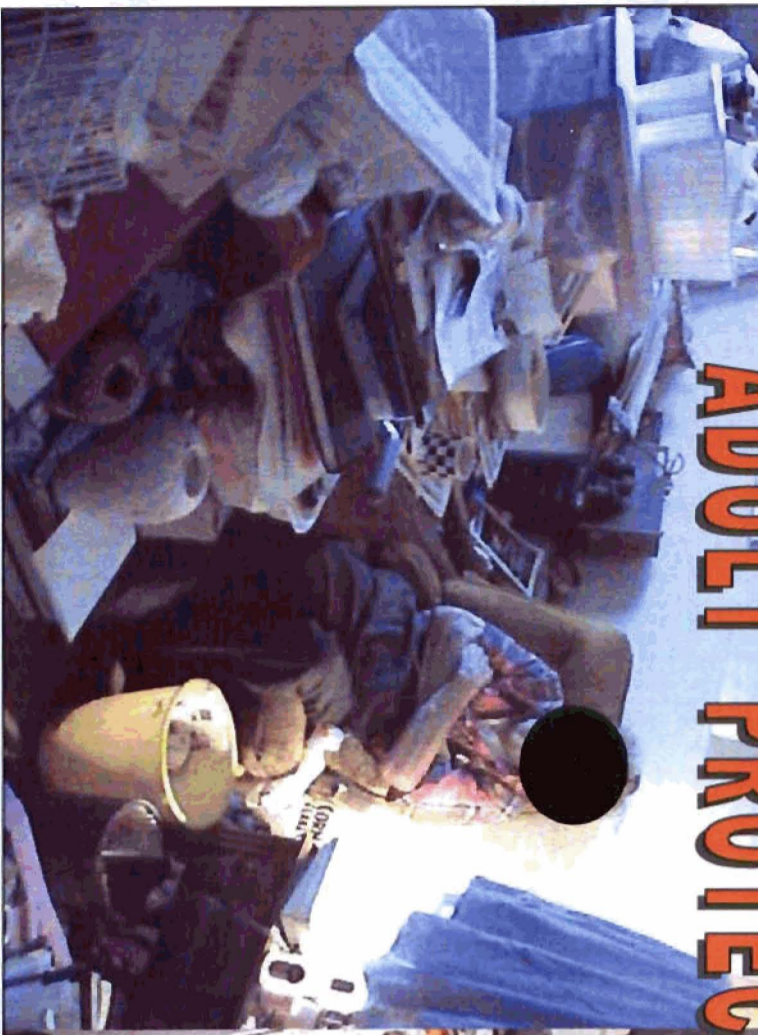


Sheriff's Office





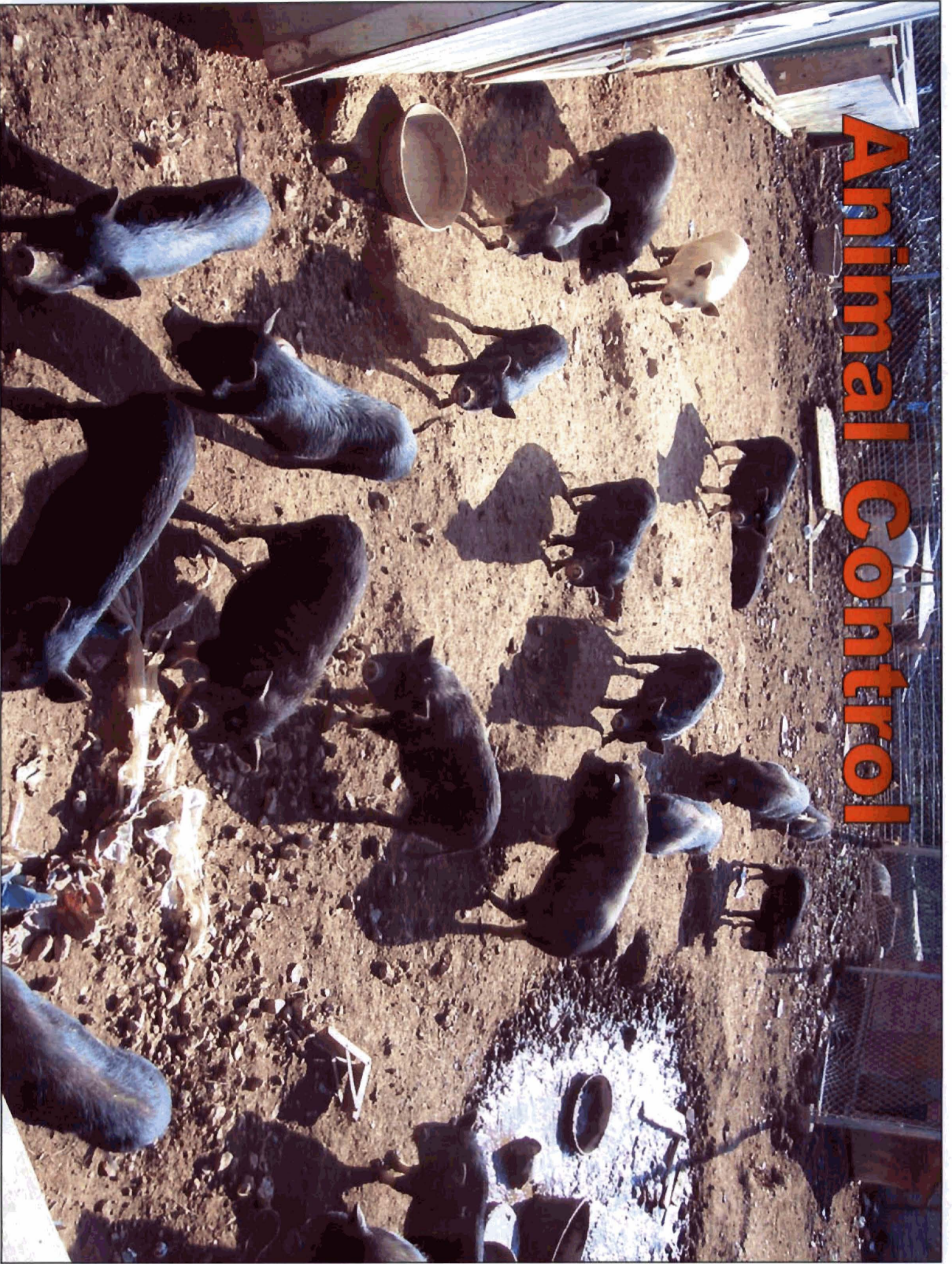
ADULT PROTECTIVE SERVICES



CHILD PROTECTIVE SERVICES



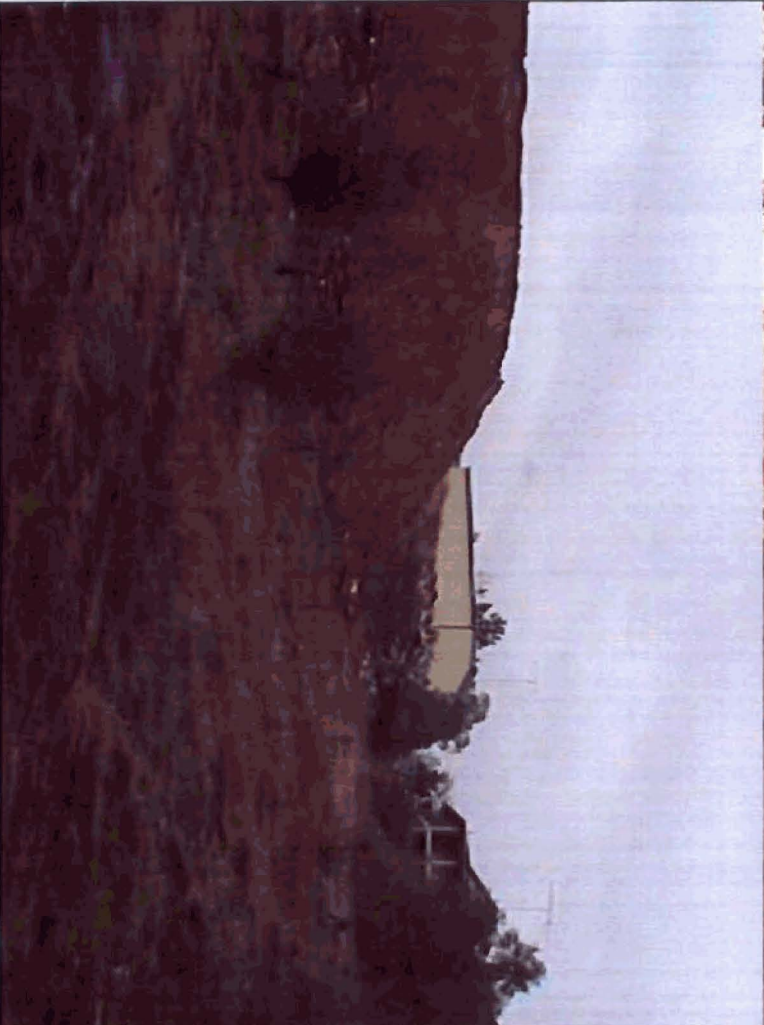
Animal Control



Environmental Health



Grading & Erosion Control Issues



Fire Departments





