

HHSA CHILD WELFARE SERVICES

PRESENTED BY: LESLIE GRIFFITH, DEPUTY DIRECTOR

We live in a world in which we need to share responsibility. It's easy to say, "it's not my child, not my community, not my problem".

Then there are those who see the need and respond. I consider those people my heroes.

Mr. Rogers

PRESENTATION OVERVIEW

- What is Child Welfare Services?
- What do we have to do?
- What is child abuse?
- How do we address and prevent it?
- Who does the work?
- How is it funded?
- How are we doing?
- Service Challenges
- Community and Staff Turnover Impacts
- Where are we going in the future?
- Questions

WHAT IS CHILD WELFARE SERVICES?

“Child welfare is a continuum of services designed to ensure children are safe and that families have the necessary support to care for their children successfully.”

- Federal and state laws establish the legal, regulatory, and fiscal frameworks for the child welfare system.
- Involves collaboration of multiple county departments, juvenile courts, community and family resource partners.

CHILD WELFARE SERVICES MISSION AND BELIEFS

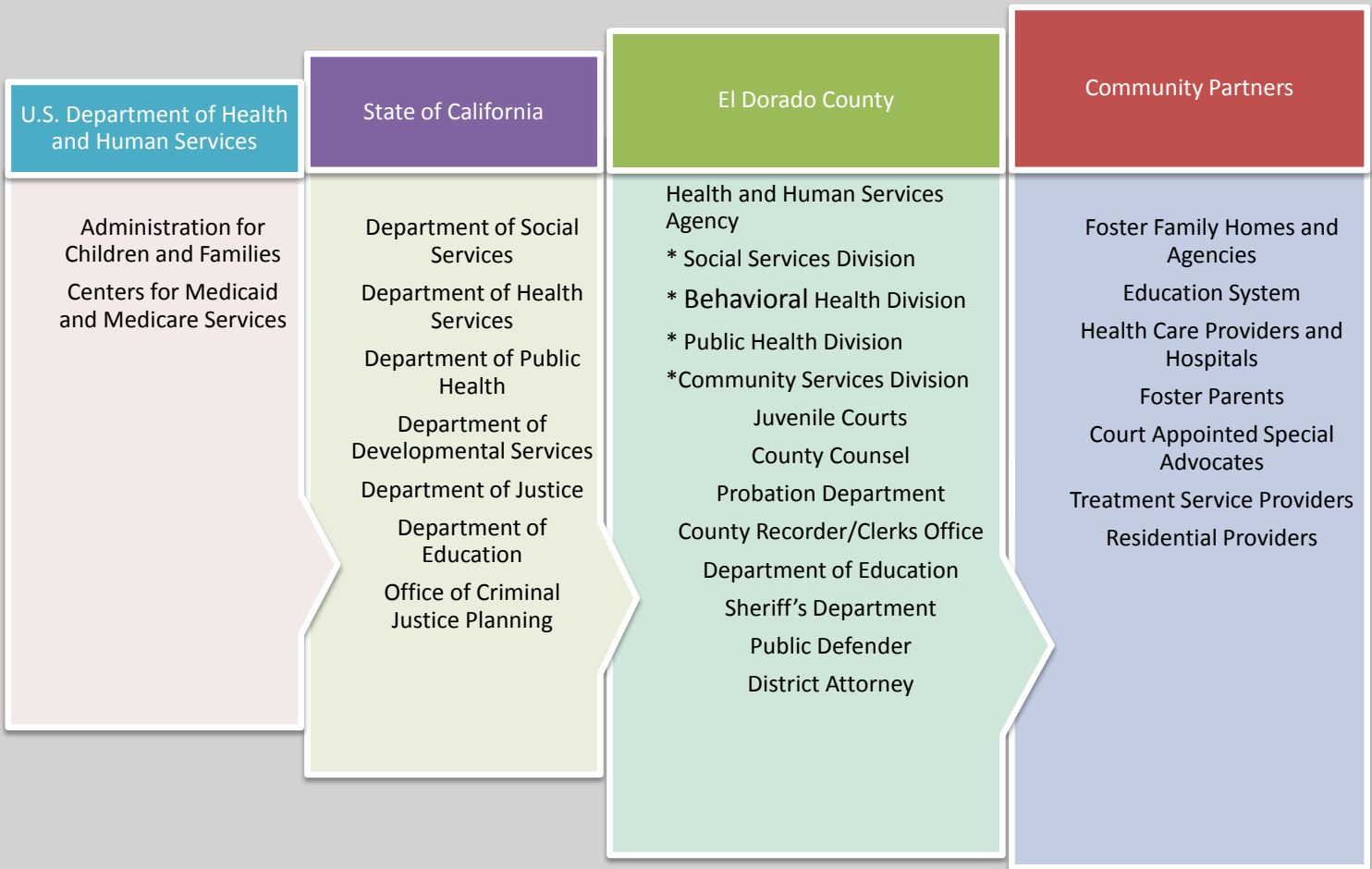
The **mission** of El Dorado County Child Welfare Services is to promote the **safety**, **well-being** and **permanency** of children while strengthening and preserving the family through family engagement, community partnerships, and trauma-informed services.

We Believe - Video for Nonprofit Organizations

We believe in:

- Safety
- Permanency
- Engagement
- Partnership
- Hope
- Competency

Child Welfare System



IT TAKES A VILLAGE!

WHO DO WE SERVE?

CWS serves children (ages 0-21) who are at risk of abuse and neglect, and their families through:

1. Prevention
2. Emergency/community response
3. Foster Care
4. After Care

Calls received by intake unit in 2016	2536
Calls investigated by Emergency Response in 2016	1291
Children and youths in out of home care (August 2017)	299
Total children/youths in care (August 2017)	381

Sources: Business Objects Caseload Summary Report, SafeMeasures

WHAT DO WE HAVE TO DO?

- Child Welfare Services are governed by Sections 300 et seq. and 16500 et seq. of the California Welfare and Institutions Code and Division 31 Regulations.
- Provide or obtain interventions and services to address child abuse and neglect and increase the well-being of children and families.
- County child welfare programs have four mandatory service components established through state legislation:
 1. Emergency Response
 2. Family Maintenance
 3. Family Reunification
 4. Permanent Placement

WHAT IS CHILD ABUSE?

- California Penal Code defines specific categories of child abuse:
 - Physical Abuse
 - Sexual Abuse
 - General Neglect
 - Severe Neglect
 - Emotional Abuse

HOW DO WE ADDRESS AND PREVENT IT?

- 24-Hour Emergency Response Hotline
- In-Person Investigation of child abuse reports
- Pre-placement services
- Screen and assess families
- Provide foster care services
- Provide case management and other services to keep families together
- Provide permanency for children through adoption services
- Approve resource homes

WHO DOES THE WORK?

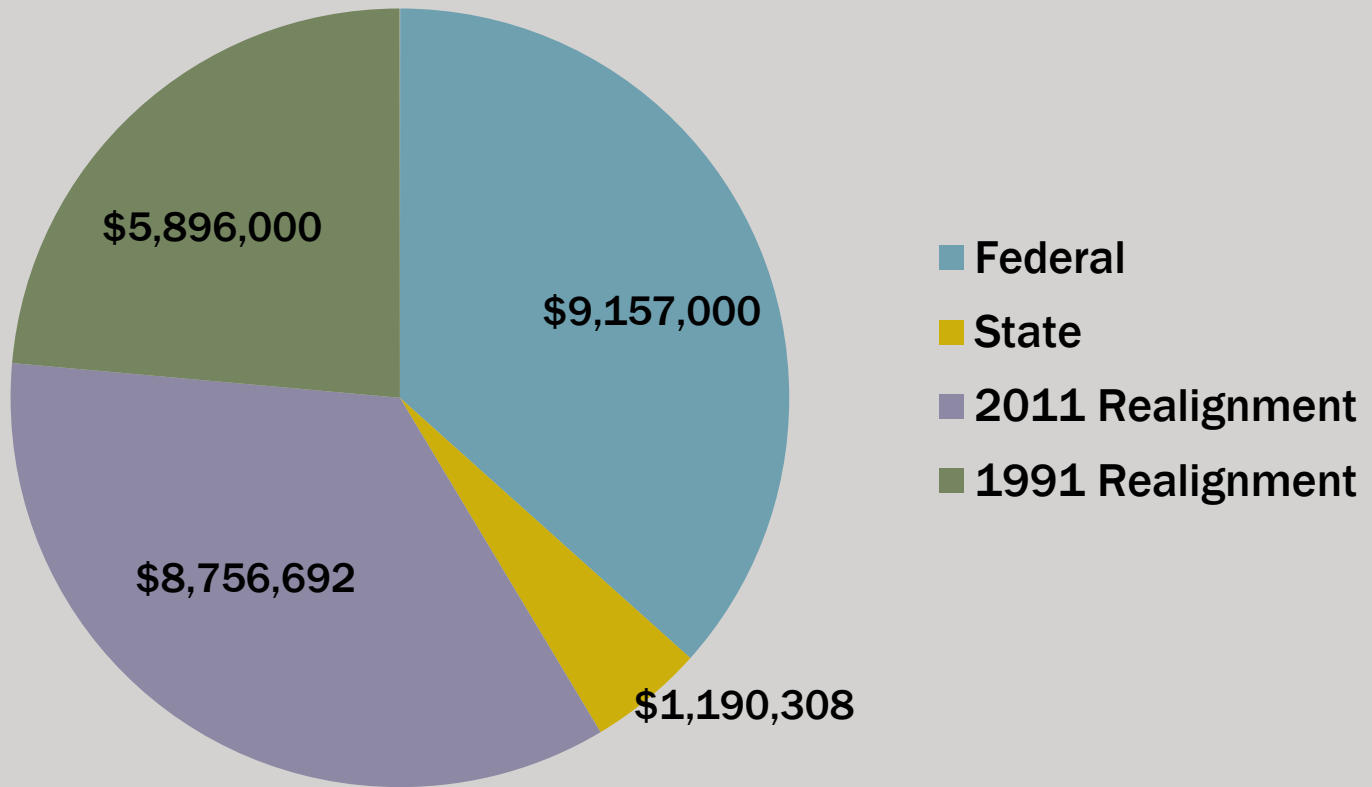
Child Welfare Social Workers

Division 31 regulations require that at least 50% of staff providing Emergency Response and Family Maintenance Services possess a master's degree in Social Work or its equivalent in education and/or experience.



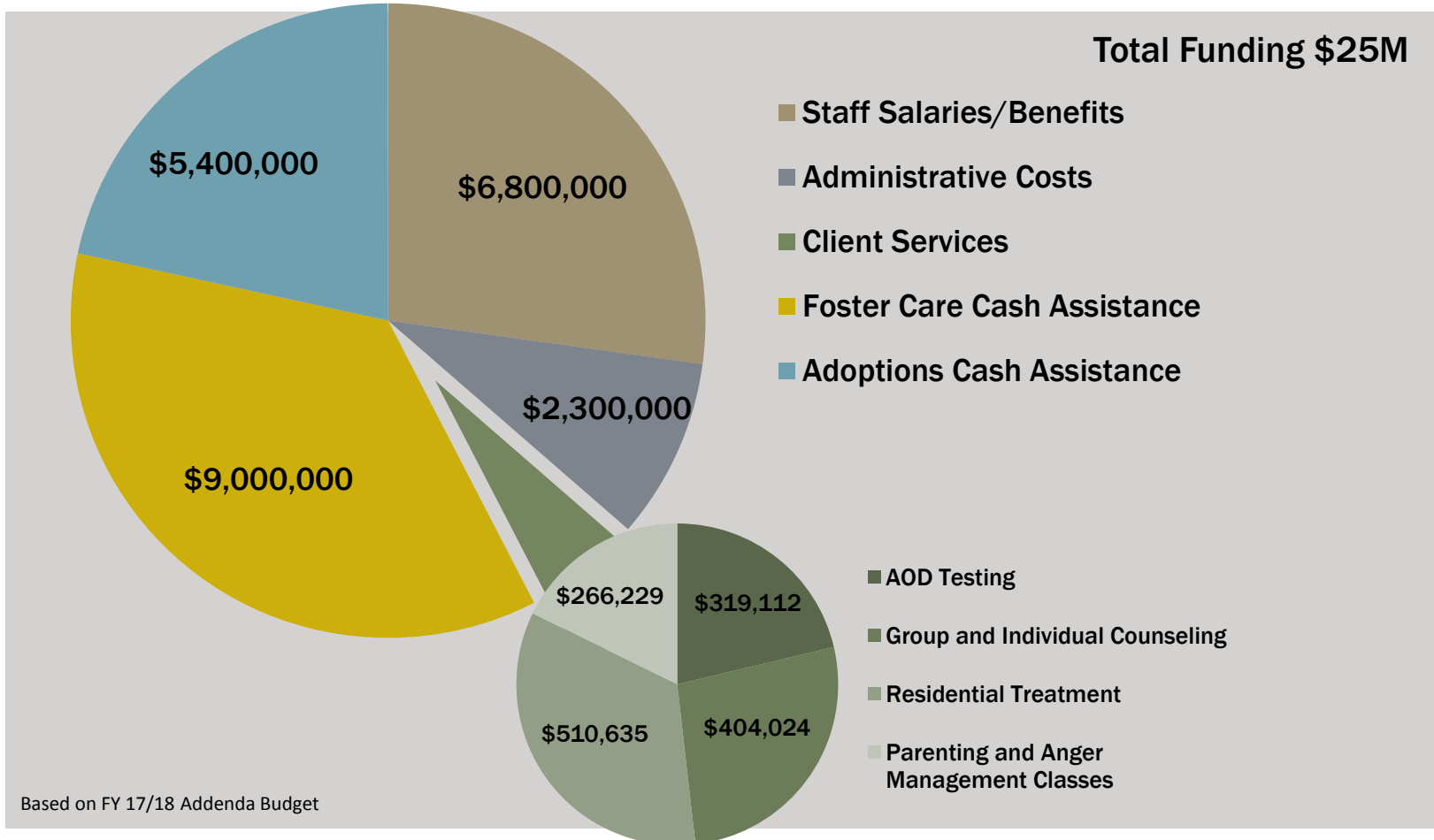
HOW IS IT FUNDED?

Total Funding \$25M



Based on FY 17/18 Addenda Budget

WHERE DOES THE FUNDING GO?



HOW ARE WE DOING?

In 2016, 62.3% of children in care on January 1 remained in care by December 31. That's 142 children who did not have a permanent home within a 12-month span.

Between April 1, 2014-March 31-2015, 15.7% of children who exited foster care to reunification entered back into foster care within 12 months.

How well are we meeting our goals?

Children who have to be removed from their immediate families do best when placed with kin.



Over the past 3 years, CPS staff have been able to place 1 out of every 4 children with outside kin.

The ultimate goal of CPS is to reunite children with their families.

Between 2014 and 2016, almost half of all children who exited foster care were reunified.



In three years, that was 214 children.

Nearly 1 out of every 6 children whose abuse allegation was determined to be inconclusive were the subject of a substantiated maltreatment allegation within the next 24 months.



In July of 2017, social workers were able to investigate 86.8% of referrals within federally mandated timelines. However, that means 9 referrals were not investigated timely, including 2 immediate response referrals.

CHALLENGES

- **Insufficient Funding and Increased State Mandates**
- **Increase in high complexity cases**
- **Increase in staff turnover**
- **Lack of local foster homes**
- **Minimal availability of services in South Lake Tahoe**
- **High Caseloads**

WHY SHOULD YOU CARE?

- Foster Care Involvement Affects Child Outcomes
- Impact to Communities
 - Law Enforcement - Prisons
 - Homelessness
 - Health Care Costs
 - Public Assistance
- Cost of Social Work turnover
 - Direct Costs (Advertising, interviewing, background checks, training)
 - Indirect Costs (Low morale, increased workloads, liability due to inexperience of staff, negative impacts on families)

CASEWORKER TURNOVER IMPACTS OUTCOMES

- Lower permanency rates
- Greater instability
- Longer stays in foster care
- Decreased reunification
- Reasonable Efforts
- Loss of trust between case workers and clients
- Delayed investigations
- Increased recurrence of maltreatment

WHERE ARE WE GOING IN THE FUTURE?

CWS has started to review their model of service delivery in order to help facilitate future program changes and enhance staffing resources.

We are looking for ways to:

- Improve recruitment and retention efforts
- Increase Prevention and Education Activities
- Explore Differential Response Service Delivery

QUESTIONS?

**Deputy Director of Child Protective Services:
Leslie Griffith, MSW**

leslie.griffith@edcgov.us

(530) 642-7100

**Child Protective Services is located in the Health and Human
Services Agency building:**

3057 Briw Road, Suite A

Placerville, CA 95667

and

3368 Lake Tahoe Blvd.

South Lake Tahoe, CA 96150