

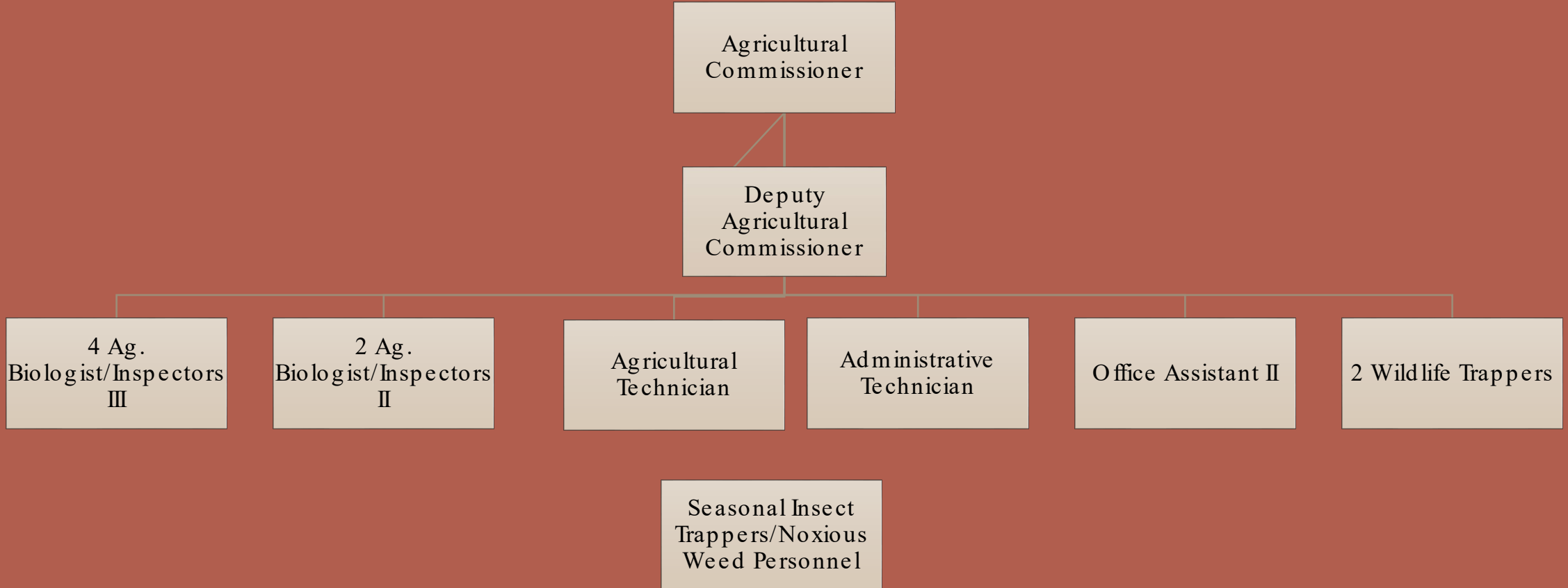
Agriculture Department Overview 2023

Presented to the Board of Supervisors on February 1, 2023

Mission Statement

- The Department of Agriculture, Weights & Measures' mission is to protect, enhance and promote the preservation of agriculture and the environment while sustaining the public health, safety and welfare of all citizens, and to provide consumer and marketplace protections through the fair and equitable enforcement of laws and regulations.
- The Department of Agriculture, Weights & Measures is responsible for enforcing laws and regulations from the California Food and Agricultural Code, the Business and Professions Code, the Health & Safety Code, the Government Code, the Civil Code, the California Code of Regulations and the County of El Dorado Codes pertaining to agriculture, and weights and measures.

Organizational Chart



What we do?

Agricultural Programs

- Pest Detection
- Pest Exclusion
- Organics
- Pest Management
- Fruit/Vegetable Quality
- Noxious Weeds
- Nursery Inspections
- Eggs Quality
- Seed Inspections
- Outreach and Education
- Crop Statistics
- Apiary Inspections/Registrations
- Pesticide Use Enforcement
- Industrial Hemp
- Crop Verification
- Agricultural Grading
- Agricultural Commission Staff
- Land Use Issues
- Honey
- Certifying Agricultural Producers

What we do?

Weights and Measures Programs

- Petroleum Inspections
- Pricing Accuracy
- Quantity Control
- Weighmaster Audits
- Complaint Investigations
- Certifying Weighing and Measuring Devices



Current Year Budgets

- Department budget of \$2,086,131
 - Salaries and Benefits make up over 70%
- Net County Cost of \$890,028



23-0248 F 6 of 13

Major Revenue Sources

- Pesticide Mill
 - The mill assessment on pesticide products is 21 mills (0.021) per dollar sales for all sales of registered pesticides for use in CA. Funds allocated to each county is based on set criteria in regulation and each county's pest control activities, costs and workload.
- Unclaimed Gas Tax Fund
 - A number of years ago Cal Trans, with the Air Resources Board, developed a formula to estimate the amount of taxed gasoline used by Agriculture and Landscapers. Taxes that are not claimed for refunds are distributed to the CA Department of Food and Agriculture to be used by the department and Counties for the administration of Agricultural programs.

Device Registration Fee

- Annual fee to recover the costs of inspecting or testing weighing and measuring devices, not to exceed the county's total cost of actual inspection. Fee amounts are set in state code.

Major Revenue Sources

- Unclaimed Gas Tax \$434,477
- State Contracts \$217,128
- Pesticide Mill \$151,085
- Device Registration fees \$119,900
- Federal Funds \$77,000
- Other Government \$150,727

Service and Performance Indicators

- Pest Detection – 1340 insect traps placed and checked every two weeks – over 9,000 servicing's
- Vegetation Pest Management – Noxious Weeds – over 500 sites visited and treated utilizing IPM, multiple times a season
- Farmers Market Inspections – Inspect all markets - 13
- Certified Producer Certificate – 70 Registrations
- Inspected 604 weighing devices, 2147 measuring devices
- 338 Pesticide Permits Issued, 27 Notice of Intent, 48 Inspections

Role in the Strategic Plan

- Economic Development –
 - Farmers Market/Certified Producer Registrations, Industrial Hemp Pilot Program, Pest Detection, Weights and Measures
- Good Governance–
 - Collaborative Relationships and Data Sharing with other depts.
 - Pursuit of other funding sources.

Role in the Strategic Plan

- Public Safety/Healthy Communities–
 - Pesticide Use Enforcement and Inspections to keep our Agriculture and residential communities safe
 - Natural Disaster access programs for our Agricultural Communities
 - Partnerships with Federal, State, and local agencies to facilitate the needs of our Communities.
 - Weights and Measures – Quality Control

Upcoming Policy and Programmatic Changes

Ag/Livestock Disaster Access
Program Development

Ranch Marketing Ordinance
and Winery Ordinance Update

Hemp Best Management
Practices – Pilot Program