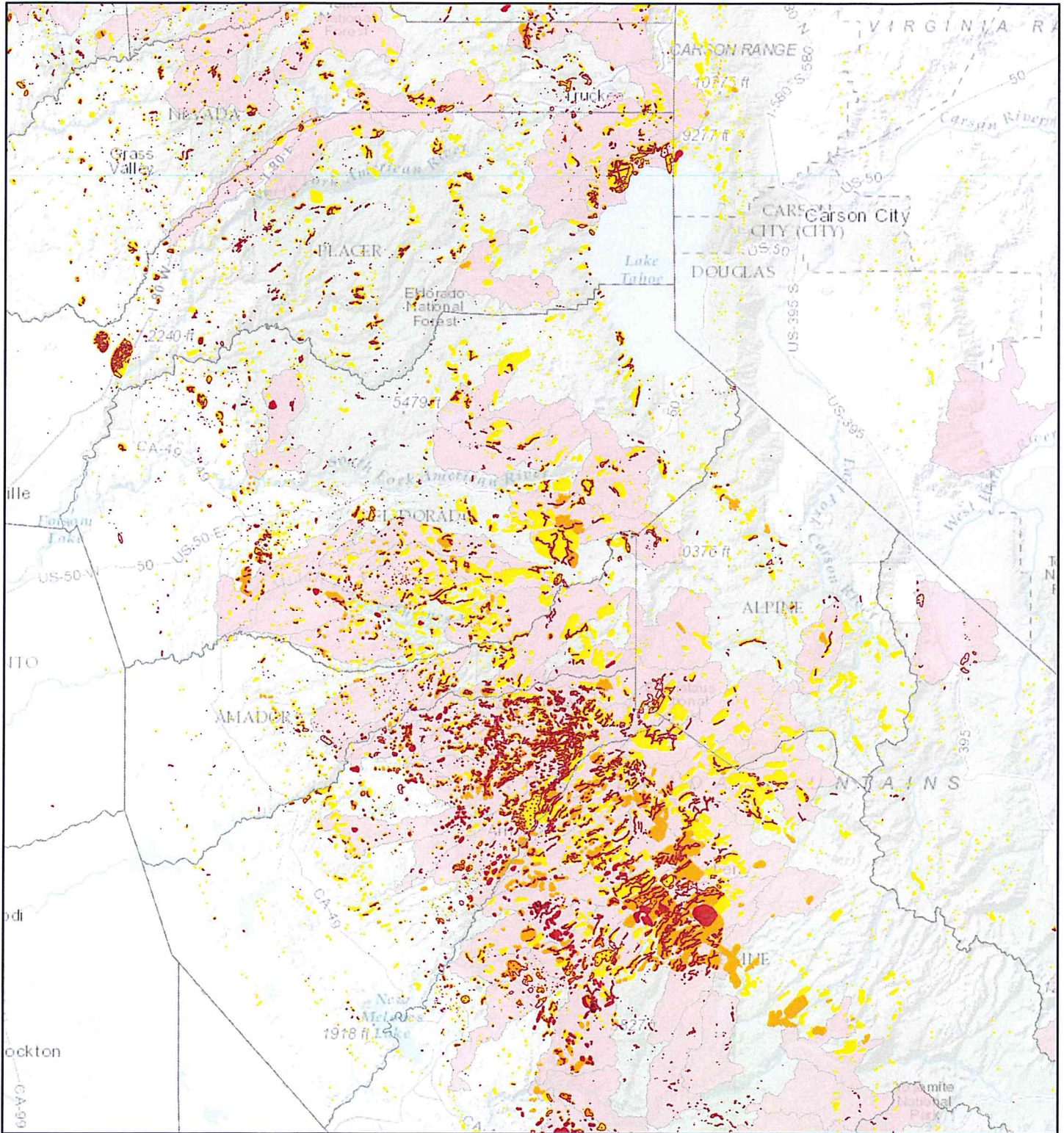


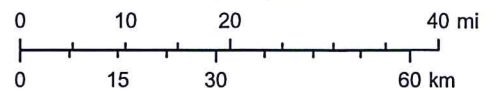
March 25, 2016



March 25, 2016

1:1,155,581

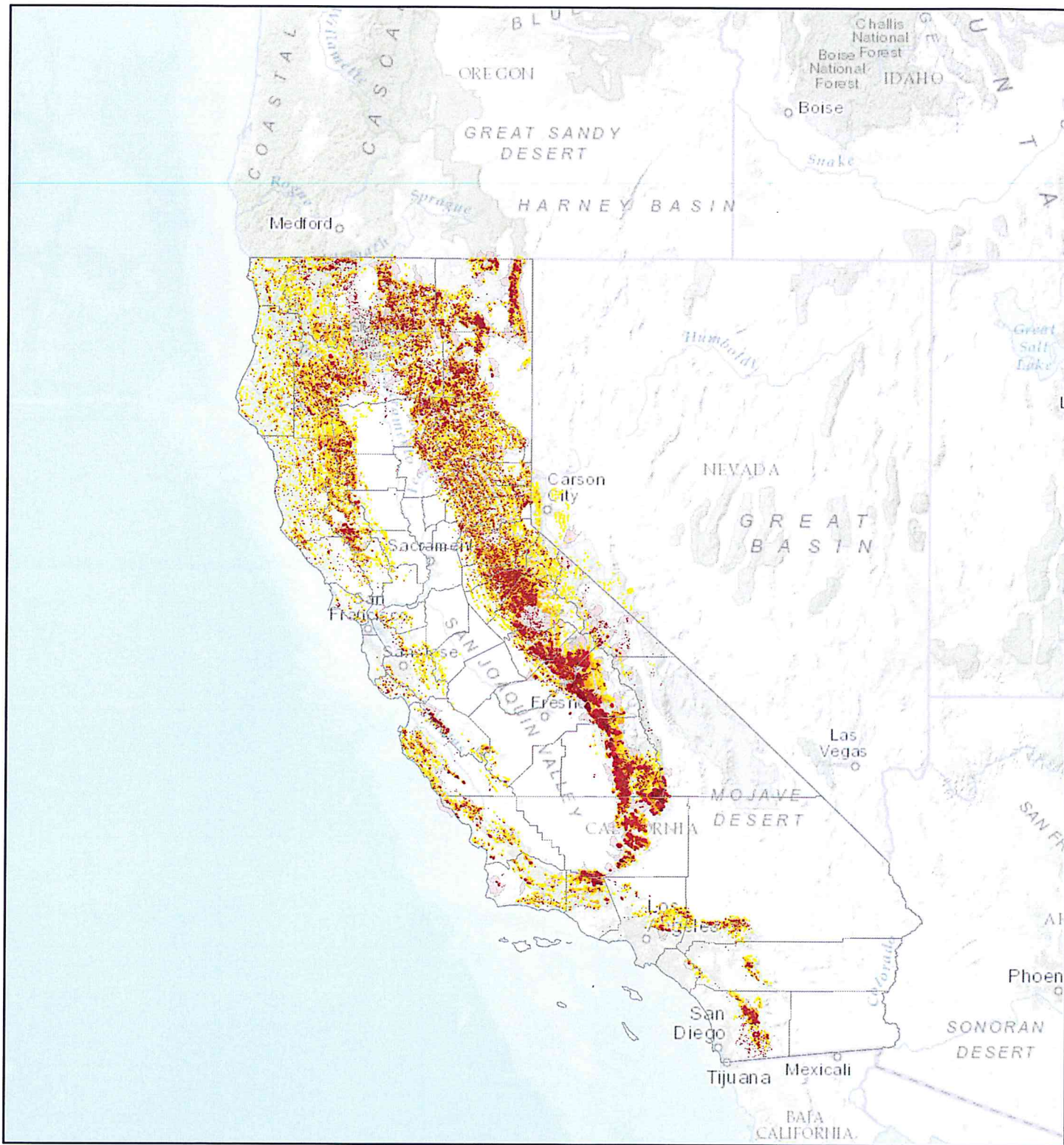
- County Boundaries
- Tier One High Hazard Zones
- USFS 2015 Flown Area
- >0 - 5 (Background Mortality)
- 5 - 15
- 15 - 40
- 40+
- Tier Two High Hazard Zones



Sources: Esri, HERE, DeLorme, Intermap, increment P Corp., GEBCO, USGS, FAO, NPS, NRCAN, GeoBase, IGN, Kadaster NL, Ordnance Survey, Esri Japan, METI, Esri China (Hong Kong), swisstopo, MapmyIndia, © OpenStreetMap contributors, and the GIS User Community
USFS, CAL FIRE

16-0305 B 1 of 2

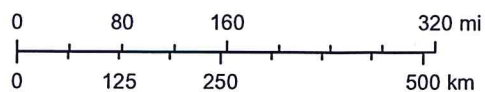
March 25, 2016 - State View



March 25, 2016

1:9,244,649

- County Boundaries
- Tier One High Hazard Zones
- USFS 2015 Flown Area
- >0 - 5 (Background Mortality)
- 5 - 15
- 15 - 40
- 40+
- Tier Two High Hazard Zones



Sources: Esri, HERE, DeLorme, Intermap, increment P Corp., GEBCO, USGS, FAO, NPS, NRCAN, GeoBase, IGN, Kadaster NL, Ordnance Survey, Esri Japan, METI, Esri China (Hong Kong), swisstopo, MapmyIndia, © OpenStreetMap contributors, and the GIS User Community
USFS, CAL FIRE

16-0305 B 2 of 2