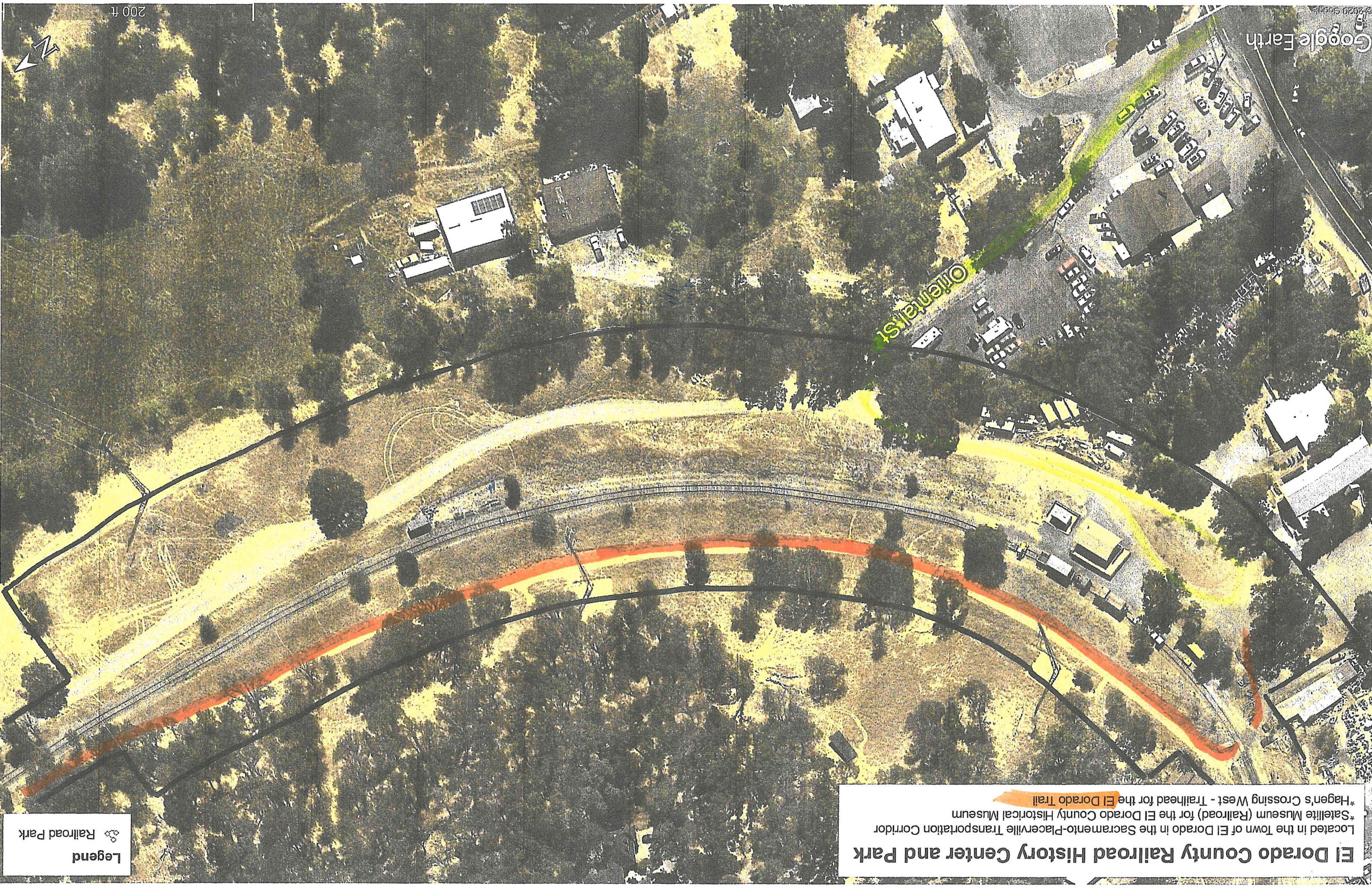




El Dorado County Railroad History Center and Park
El Dorado Mill
Oriental St.

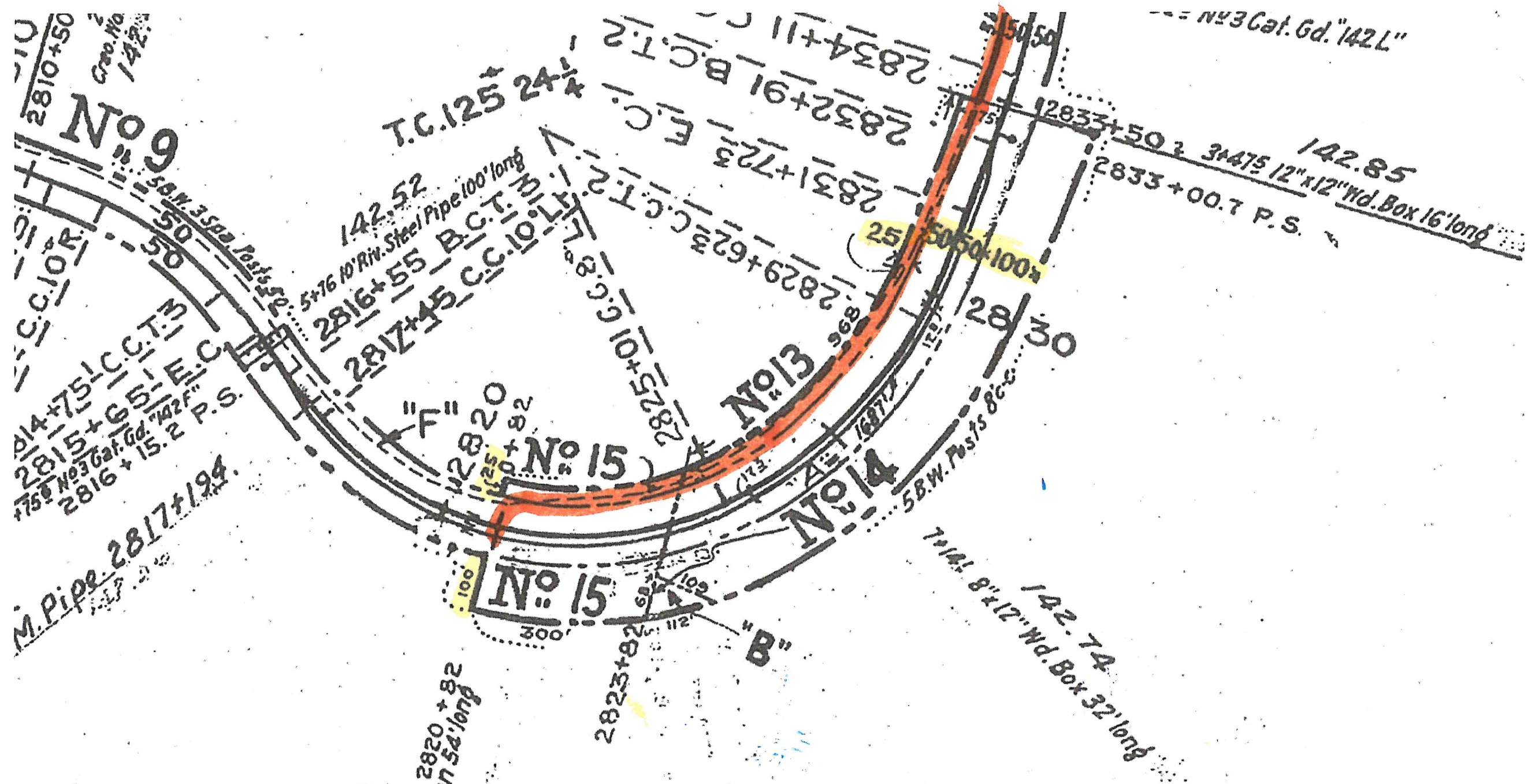


El Dorado County Railroad History Center and Park
Located in the Town of El Dorado in the Sacramento-Placerville Transportation Corridor
*Satellite Museum (Railroad) for the El Dorado County Historical Museum
*Hagen's Crossing West - Trailhead for the El Dorado Trail

Legend
📍 Railroad Park

200 ft





No. 9

No. 13

No. 14

No. 15

El Dorado Trail

Portion of Right of Way
 & Track Maps
 Placerville Branch of the S.P.Co.
 V-78/15

01554 Road Xing Gravel
 142.62
 01884 6" x 4" W.I. Pipe Syphon 54' long
 2820+82

M. Pipe 2817+194

Nº3 Cat. Gd. "142L"

142.85
 3x475 12" x 12" Hd. Box 16' long
 2833+00.7 P.S.

142.74
 7x141 8" x 12" Hd. Box 32' long

T.C. 125 24 1/4

142.52
 5x76 Riv. Steel Pipe 100' long
 2816+55 B.C.T. MIN.
 2817+45 C.C. 10' L.F.

2834+11 B.C.T. 2
 2832+91 B.C.T. 2
 2831+723 F.C.
 2829+623 C.C.T. 2
 2825+501 C.C.T. 2

2810+50
 C.C. 10' R.
 2814+75 C.C.T. 1
 2815+65 W.I. C.
 75' Nº3 Cat. Gd. "142L" P.S.
 2816+15.2

2823+82

100
 300

25
 50
 50
 100

28
 30

Portion of
1871 Townsite
Map of E. Idaho

North St.

