





J-4B

J-4B

# PLAT OF CREEKSIDE GREENS UNIT NO. 3

A PORTION OF THE SE1/4 OF SECTION 11, T. 8 N., R. 8 E., M.D.M.,  
BEING A PORTION OF THE REMAINDER PARCEL OF P.M. 45-140

COUNTY OF EL DORADO, STATE OF CALIFORNIA

SCALE: 1"=50' FEBRUARY, 2005

SHEET 3 OF 3

COOPER, THORNE & ASSOCIATES, INC.

### NOTES

1. ALL DIMENSIONS OF LINES AND AREAS SHOWN UNLESS OTHERWISE NOTED.
2. ALL WELL POINTS SHOWN TO REMAIN ARE CONTROL POINTS AND ARE TO BE MAINTAINED AT ALL TIMES. ALL REMAINING WELL POINTS ARE TO BE MAINTAINED AT ALL TIMES.
3. ALL POINTS OF CONTROL ARE TO BE MAINTAINED AT ALL TIMES AND ARE TO BE MAINTAINED AT ALL TIMES.
4. THE AREA CONTAINED WITHIN THE SUBDIVISION IS 1.00 ACRES.
5. LOT 10 SHOWS HEREIN AS RESERVED FOR FUTURE DEVELOPMENT.
6. PURSUANT TO SECTION 560001.02, THE PLANS OF THIS MAP SHALL CONSTITUTE AN AGREEMENT OF ALL PUBLIC UTILITIES AND PUBLIC UTILITIES AND OTHERS ON THE MAP. THE AGREEMENT ESTABLISHED IS AS FOLLOWS:  
 California Telephone Company AND  
 BORN AREA AND IN AND TO 11-112
7. REFER TO BOOK 4784 PAGE 140 FOR RECORDED RESTRICTIONS TO RESUBDIVISION.

### LEGEND

- ◆ SUBDIVISION MARK
- ◆ TRAILING MARKERS AS NOTED
- ◆ FOUND 5/17 C.I.P. CHANGED P.M. 2004
- ◆ FOUND 1 1/2" C.I.P. CHANGED P.M. 2004
- ◆ FOUND 5/17 C.I.P. CHANGED 12/30/04
- ◆ SET SURVEY PINE AND WOODEN CHAINS 11/20/04
- ◆ SET 5/17 C.I.P. CHANGED 12/30/04
- ◆ 2004 SURVEY CONDUCTED
- ◆ L.L.L. SURVEY LINE CHAINING
- ◆ REFERENCE PER REFERENCES INC.
- ◆ SET BACK SURVEY MARKERS AND PUBLIC UTILITY LOCATIONS

### REFERENCES

- 1. P.M. 45-140
- 2. P.M. 45-140
- 3. P.M. 45-140
- 4. P.M. 45-140
- 5. P.M. 45-140

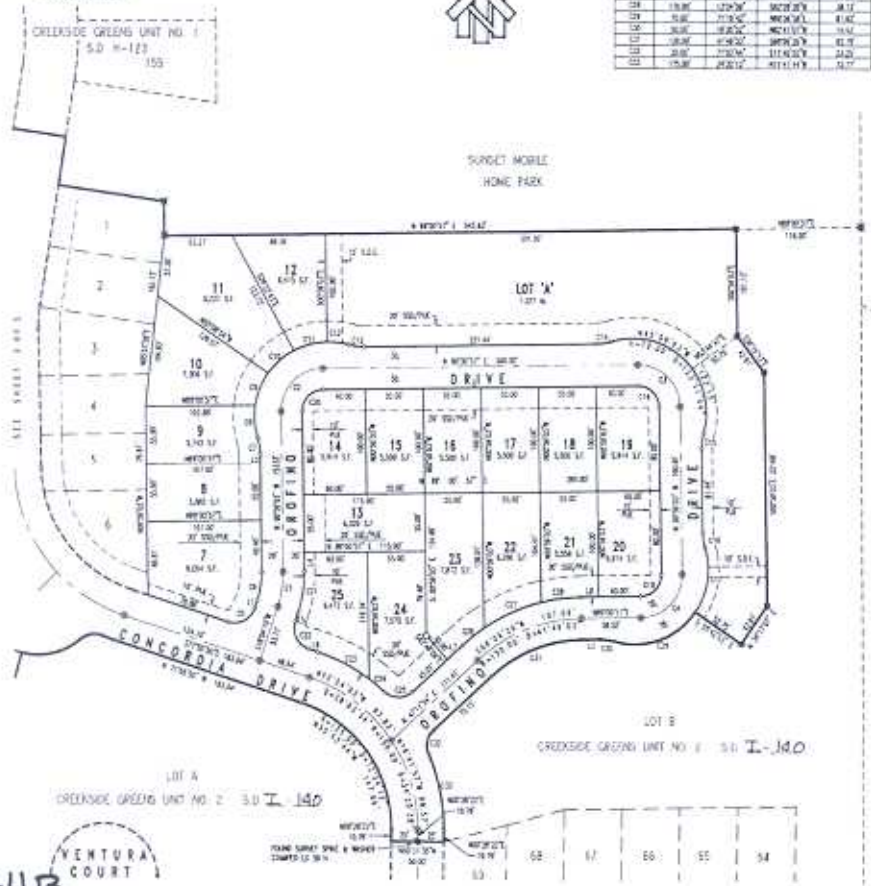
LINE	LINE BEARING	DISTANCE
17	S 12° 24' 30" E	8.17
17	N 87° 35' 30" W	8.86
17	N 87° 35' 30" W	17.24
17	N 87° 35' 30" W	18.62
17	S 12° 24' 30" E	8.17
17	N 87° 35' 30" W	8.86
17	N 87° 35' 30" W	17.24
17	N 87° 35' 30" W	18.62
17	S 12° 24' 30" E	8.17

### BASIS OF BEARINGS

THE BASIS OF BEARINGS FOR THIS SURVEY IS CONTROL WITH THE P.M. 45-140 MAPS UPON WHICH THIS SURVEY IS BEING MADE. THE BEARINGS OF WHICH IS NOTED UPON THE MAP.



LINE	BEARING	DI. BEARING	DI. DISTANCE
01	136.00	129.17	408.12 (17)
02	45.00	302.97	349.01 (7)
03	45.00	302.97	349.01 (7)
04	45.00	302.97	349.01 (7)
05	45.00	302.97	349.01 (7)
06	86.00	173.17	306.17 (7)
07	26.00	173.17	306.17 (7)
08	86.00	374.37	344.47 (7)
09	76.00	374.37	344.47 (7)
10	76.00	374.37	344.47 (7)
11	76.00	374.37	344.47 (7)
12	76.00	374.37	344.47 (7)
13	76.00	374.37	344.47 (7)
14	76.00	374.37	344.47 (7)
15	76.00	374.37	344.47 (7)
16	76.00	374.37	344.47 (7)
17	76.00	374.37	344.47 (7)
18	76.00	374.37	344.47 (7)
19	76.00	374.37	344.47 (7)
20	76.00	374.37	344.47 (7)
21	76.00	374.37	344.47 (7)
22	76.00	374.37	344.47 (7)
23	76.00	374.37	344.47 (7)
24	76.00	374.37	344.47 (7)
25	76.00	374.37	344.47 (7)
26	76.00	374.37	344.47 (7)
27	76.00	374.37	344.47 (7)
28	76.00	374.37	344.47 (7)
29	76.00	374.37	344.47 (7)
30	76.00	374.37	344.47 (7)
31	76.00	374.37	344.47 (7)
32	76.00	374.37	344.47 (7)
33	76.00	374.37	344.47 (7)
34	76.00	374.37	344.47 (7)
35	76.00	374.37	344.47 (7)
36	76.00	374.37	344.47 (7)
37	76.00	374.37	344.47 (7)
38	76.00	374.37	344.47 (7)
39	76.00	374.37	344.47 (7)
40	76.00	374.37	344.47 (7)
41	76.00	374.37	344.47 (7)
42	76.00	374.37	344.47 (7)
43	76.00	374.37	344.47 (7)
44	76.00	374.37	344.47 (7)
45	76.00	374.37	344.47 (7)
46	76.00	374.37	344.47 (7)
47	76.00	374.37	344.47 (7)
48	76.00	374.37	344.47 (7)
49	76.00	374.37	344.47 (7)
50	76.00	374.37	344.47 (7)
51	76.00	374.37	344.47 (7)
52	76.00	374.37	344.47 (7)
53	76.00	374.37	344.47 (7)
54	76.00	374.37	344.47 (7)



PARCEL 1  
P.M. 47-140

PARCEL 2  
P.M. 47-140

J-4B

J-4B