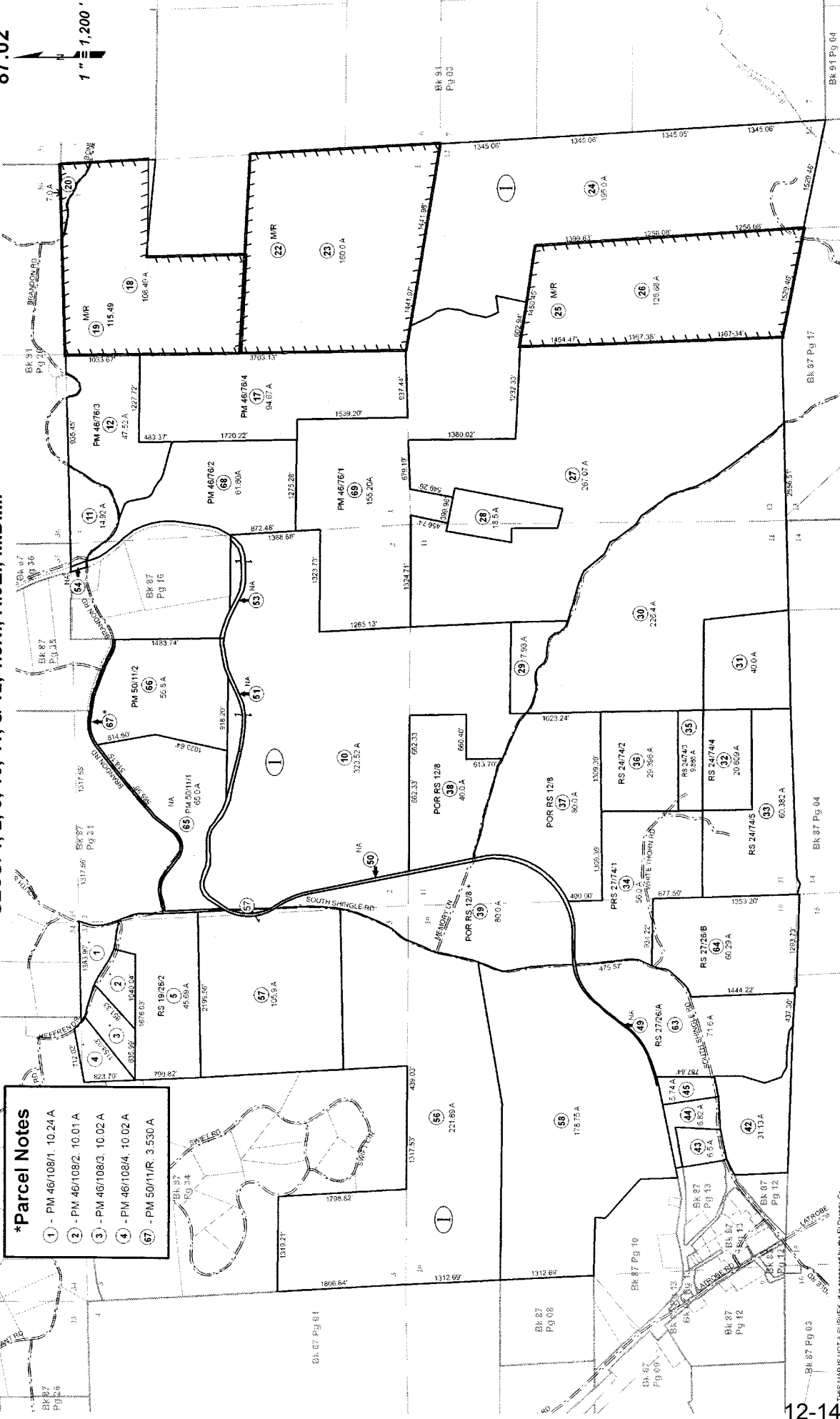


87:02

1" = 1,200'

SECS. 1, 2, 3, 10, 11, & 12, T.8N., R.9E., M.D.M.



**\*Parcel Notes**

- 1 - PM 46/108/1, 10.24 A
- 2 - PM 46/108/2, 10.01 A
- 3 - PM 46/108/3, 10.02 A
- 4 - PM 46/108/4, 10.02 A
- 67 - PM 50/11/R, 3.530 A

Assessor's Map Bk. 087, Pg. 02  
County of El Dorado, CA

Rev. Jan. 2, 2009

Allotted Map Plots Shown in Gray Text  
Assessor's Block Numbers Shown in Ellipses  
Assessor's Parcel Numbers Shown in Circles

Acresages Are Estimates

# EXHIBIT A

THIS MAP IS NOT A SURVEY. It is prepared by the El Dorado County Assessor's Office for assessment purposes only. Area calculations and characterizations are not guaranteed. Users should verify items such as dimensions and acreage.