



## RESOLUTION NO. 107-2024

OF THE BOARD OF SUPERVISORS OF THE COUNTY OF EL DORADO

### **RESOLUTION APPROVING ADDENDUM 1 TO THE MITIGATED NEGATIVE DECLARATION FOR THE HISTORICAL RAILROAD PARK PROJECT**

**WHEREAS**, on July 19, 2016, the Board of Supervisors adopted the Mitigated Negative Declaration (“2016 MND”) for the Historical Railroad Park Project (“Project”); and

**WHEREAS**, modifications to the Project were identified in 2024 to include the addition of a dog park amenity and for the changed location of a child’s playground (“Revised Project”); and

**WHEREAS**, an Addendum to the adopted 2016 MND was prepared in 2024 analyzing the environmental impacts of the Revised Project; and

**WHEREAS**, the Board has considered Addendum 1 to the adopted 2016 MND, all related documents, and comments received at its meeting on June 18, 2024.

### **NOW, THEREFORE, BE IT RESOLVED THAT THE BOARD OF SUPERVISORS OF THE COUNTY OF EL DORADO:**

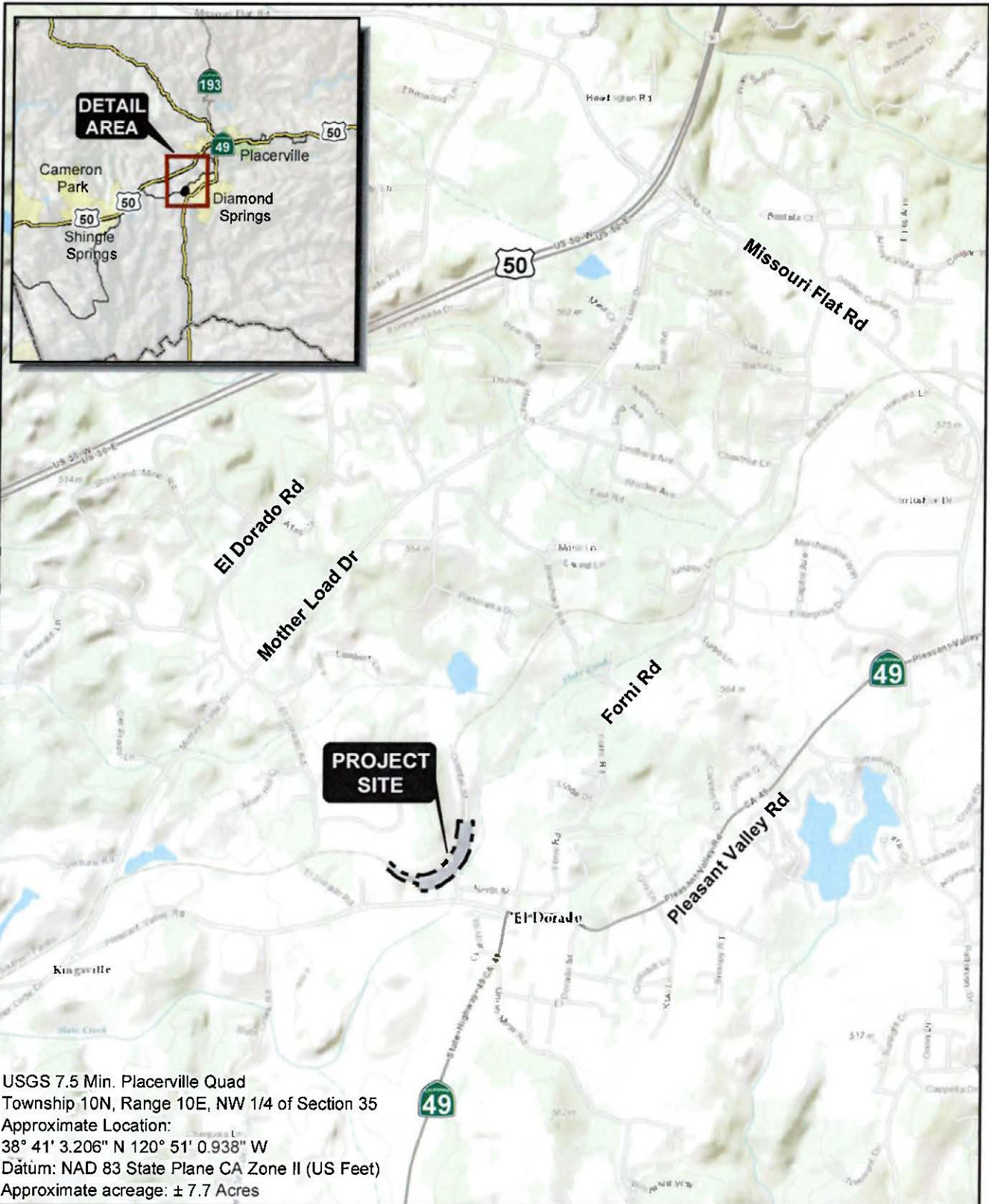
1. Finds that, on the basis of the whole record before it, there is no substantial evidence that the project modifications identified in Addendum 1 to the adopted 2016 Mitigated Negative Declaration will not have a significant effect on the environment requiring preparation of a subsequent mitigated negative declaration.
2. Approves and adopts Addendum 1 to the adopted 2016 Mitigated Negative Declaration, attached hereto and incorporated herein as Exhibit A.
3. The Office of the Clerk and the Board of Supervisors and the County Parks Division office are designated as the location and custodian of the document and other material constituting the record of proceedings upon which this decision is based.
4. The Chief Administrative Officer, or designee, is authorized to sign Addendum 1 to the adopted 2016 Mitigated Negative Declaration.

PASSED AND ADOPTED by the Board of Supervisors of the County of El Dorado at a regular meeting of said Board, held the 18th day of June, 2024 by the following vote of said Board:

Ayes: Thomas, Hidahl, Turnboo, Parlin, Laine  
Noes: None  
Absent: None

Attest:  
Kim Dawson  
Clerk of the Board of Supervisors

By: Kyra Schaufsenley Deputy Clerk      Wendy Thomas Chair, Board of Supervisors  
Wendy Thomas



Document Path: O:\N\_CalIR\_Projects\Railroad\_Park\GIS\GIS\_Protect\_Files\RailroadPark\_SnV\_20150312.mxd

USGS 7.5 Min. Placerville Quad  
 Township 10N, Range 10E, NW 1/4 of Section 35  
 Approximate Location:  
 38° 41' 3.206" N 120° 51' 0.938" W  
 Datum: NAD 83 State Plane CA Zone II (US Feet)  
 Approximate acreage: ± 7.7 Acres

### RAILROAD PARK SITE AND VICINITY

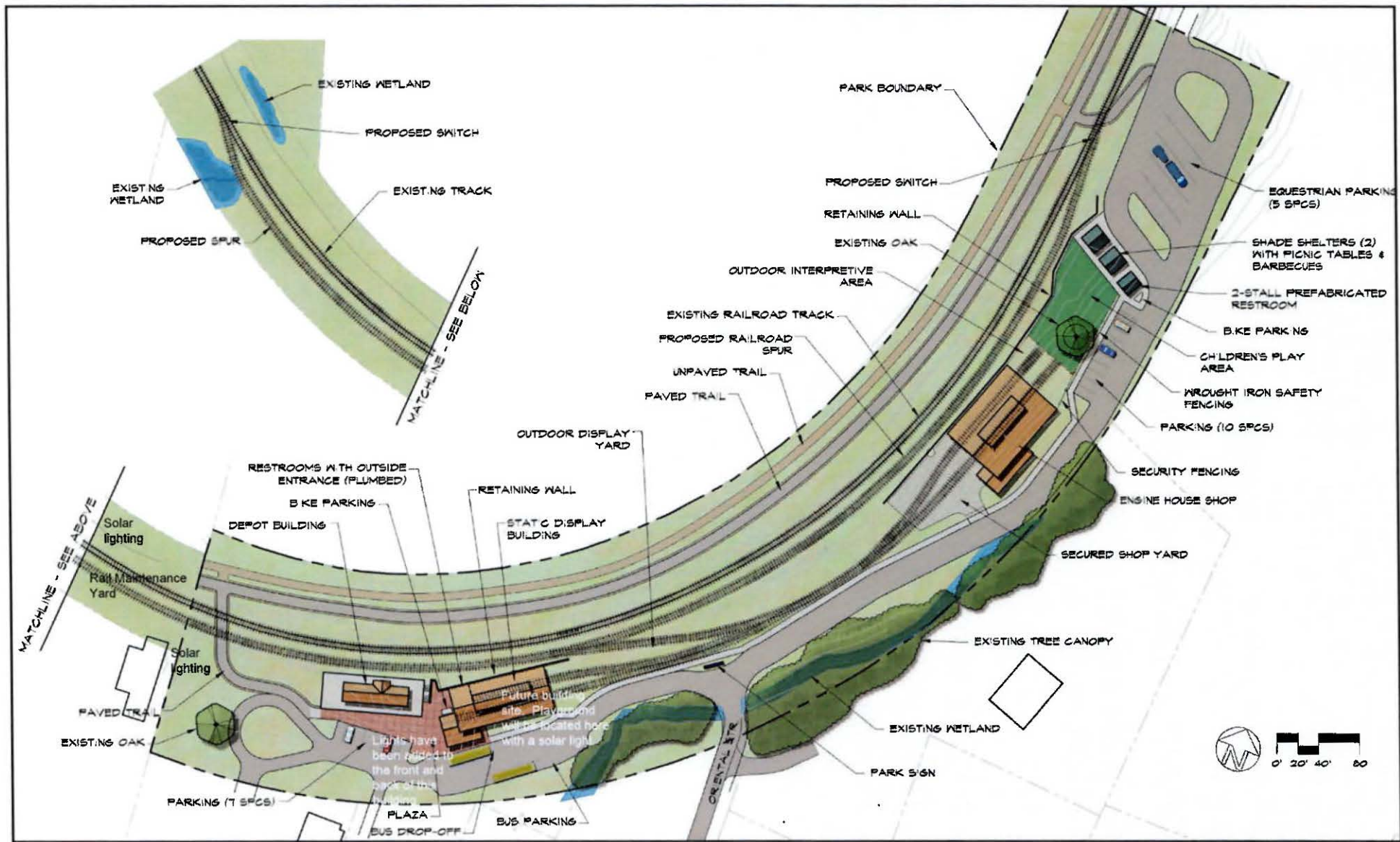
**FOOTHILL ASSOCIATES**  
 ENVIRONMENTAL CONSULTING • PLANNING • LANDSCAPE ARCHITECTURE  
 © 2016



0 1000 2000  
 FEET  
 1:24,000

Drawn By: MUB  
 Date: 01/08/2016

**FIGURE 3.2-1**

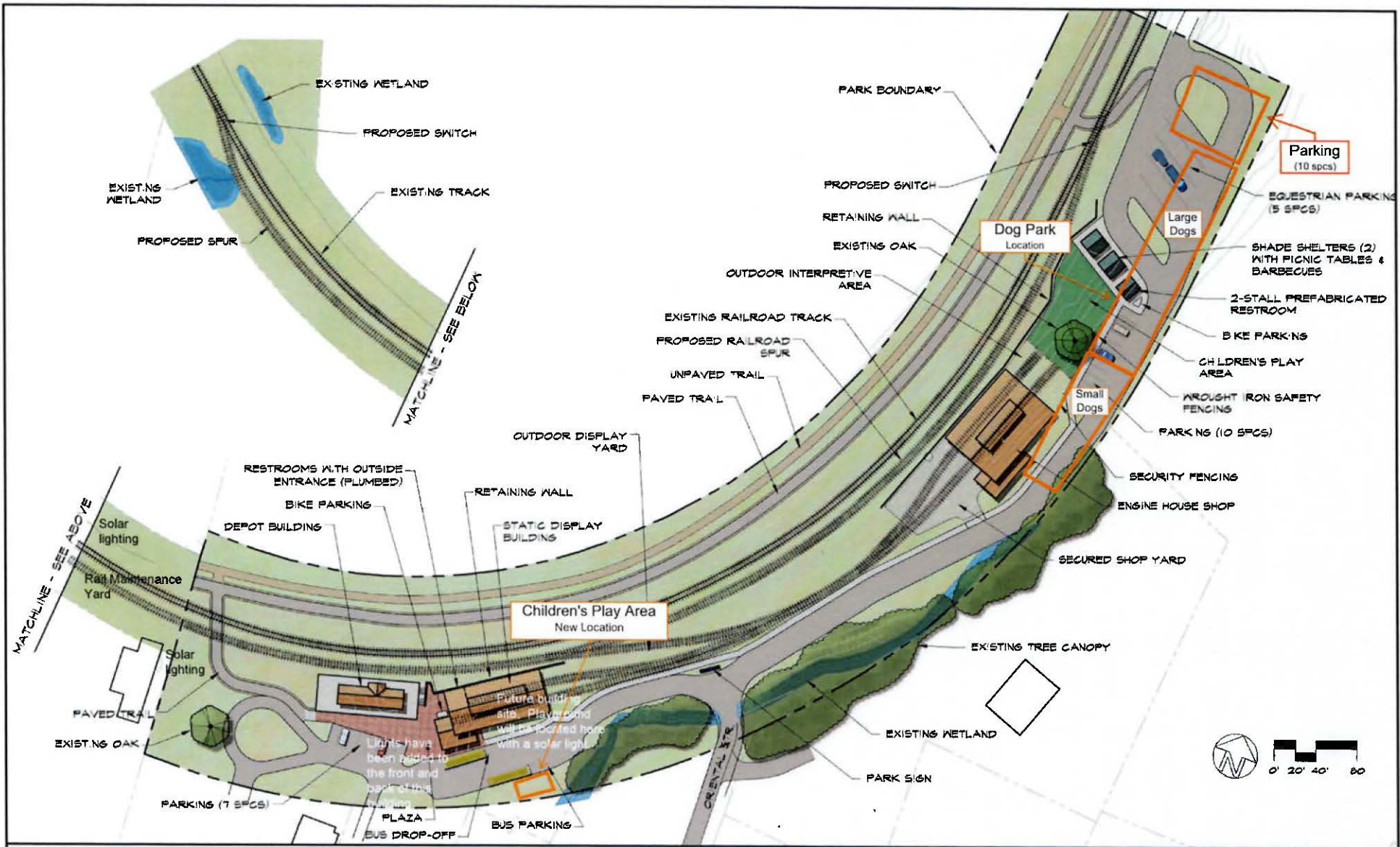


EL DORADO COUNTY

# RAILROAD PARK CONCEPTUAL PLAN

11/20/15

**FOOTHILL ASSOCIATES**  
 ENVIRONMENTAL CONSULTING • PLANNING • LANDSCAPE ARCHITECTURE  
 500 HILLS DRIVE, SUITE 2  
 ANAHEIM, CALIFORNIA 92805  
 (714) 441-1200  
 © 2015



EL DORADO  
COUNTY

# RAILROAD PARK CONCEPTUAL PLAN

11/20/15

**FOOTHILL ASSOCIATES**  
 ENVIRONMENTAL DESIGN • PLANNING • LANDSCAPE ARCHITECTURE  
 570 HIGHLAND DRIVE, SUITE 5  
 ROCKLIN, CALIFORNIA 95765  
 PHONE: 916.251.1000  
 © 2015