



*El Dorado County*

# Health Services Department

**Mental  
Health  
Services  
for Children**



*Presented May 25, 2010*



# Mental Health Children's Services

- Clinic Based Services
- School Based Services
- Psychiatric Emergency Services
- Services for Youth in Detention Facilities

*Serving children in need is important to us. We provide Mental Health services through our clinics, via contracted community organizations, and through partnerships with other agencies such as CPS, Probation and schools.*





# Who We Serve

- Medi-Cal and Health Families clients
- Youth mandated to be served under AB 3632
- Youth in detention facilities
- Youth in crisis
- Other at-risk youth





# Initial Services

- Complete a comprehensive mental health assessment
- Develop a treatment plan in cooperation with the youth and parent or guardian

*Mental Health services may be provided in our Placerville, SLT and contract provider clinics, at schools, in our local detention facilities, and/or at home.*







# Clinic Based Services

- **Evidence Based Treatment Models (EBTs)** are counseling methods that have been researched and proven to show positive outcomes.
  - Incredible Years Parenting Program
  - Trauma Focused Cognitive Behavioral Therapy
  - Teaching Pro-Social Skills
  - Wrap Around Services
- **Individual, group and family support**
- **Psychiatric Medication Services**

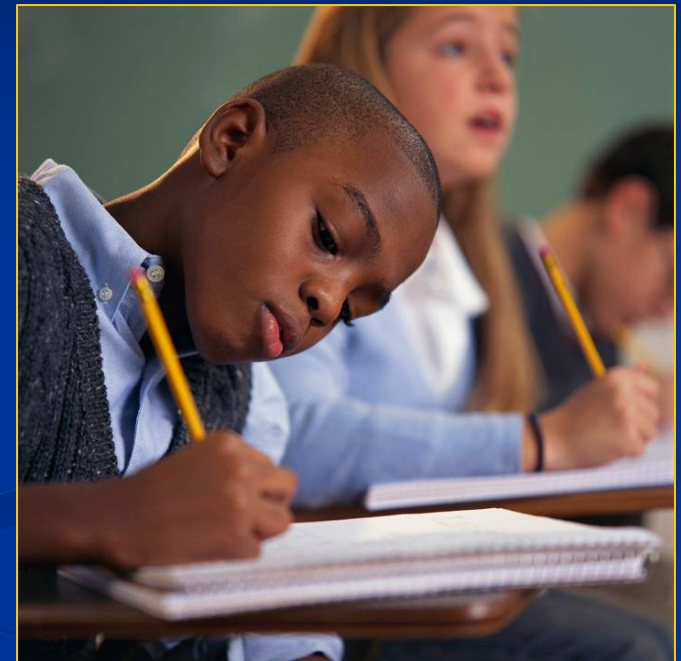


*Our Children's Services are making increasing use of EBTs.*



# School Based Services

- **Special Education Classrooms**
  - A mental health clinician provides support in these classrooms:
    - K-3 @ Sutter's Mill Elementary
    - 4-8 @ Gold Trail Middle School
    - 9-12 @ Ponderosa High School and Union Mine High School
  - Individual, group and/or family therapy may be provided
- **Services are mandated under AB 3632, however, state funding for these services has been deferred**
- **Residential care for AB 3632 kids may be required**



*“One important goal in mental health treatment is to help kids find and build upon their strengths and gifts. Working with my kids is very rewarding.”*  
~ Mental Health Therapist



# School Based Services (Cont.)

- **Other School Based Services**
  - The Division contracts with New Morning Youth and Family Services to provide counselors at multiple school sites
  - We are currently establishing MHSA Prevention and Early Intervention (PEI) strategies in schools





# Psychiatric Emergency Services

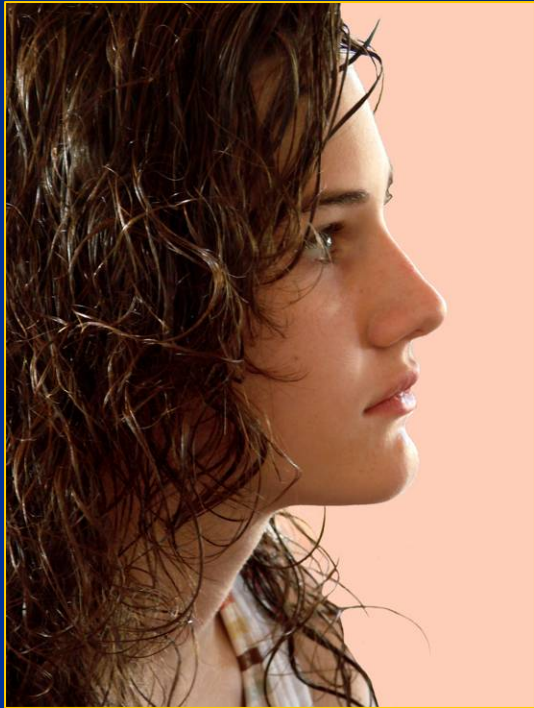
- **24/7 Crisis Response Team**
  - Available on both the West Slope and in South Lake Tahoe for adults and children
- **Teams of mental health clinicians can respond to schools and agencies during traumatic events or emergencies (such as a student death or the Angora Fire)**







# Youth In Detention



- **Mental Health services are provided for children in:**
  - Juvenile Hall (Placerville)
  - Juvenile Treatment Center (South Lake Tahoe)
  
- **Services include:**
  - Individual Therapy
  - Group Counseling
  - Family Support
  - Crisis Intervention
  - Psychiatric Medication Services
  - Collaboration with Probation and school staff
  - Discharge Planning



# Primary Locations for Children's Services

## Mental Health Facilities:

### West Slope:

670 Placerville Dr., Suite 1B  
Placerville  
(530) 621-6290

### South Lake Tahoe:

1900 Lake Tahoe Blvd.  
South Lake Tahoe  
(530) 573-3251

## For Psychiatric Emergency Services Call:

West Slope – (530) 622-3345  
South Lake Tahoe – (530) 544-2219

# Health Services Department Mental Health Division

For More Information visit:

[www.edcgov.us/mentalhealth](http://www.edcgov.us/mentalhealth)

