

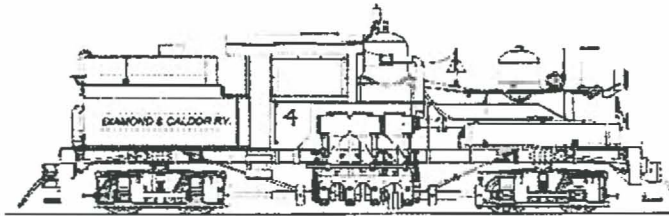
## Railroad Park Benefits El Dorado County

*The El Dorado County Historical  
Railroad Park benefits El Dorado  
County by:*

- Providing an exceptional location to better exhibit and interpret a distinctive railroad collection*
- Relieving crowded conditions at the current County Museum and allowing for acquisition of important historical artifacts from the County's past*
- Providing a tourist destination to the town of El Dorado and surroundings*
- Placing El Dorado County on the map with a far reaching and passionate population of Rail Fans who will visit our community*



CP&LT Railroad No. 4 track inspection car on the Placerville Branch at El Dorado, Nov. 2008



Diamond & Caldor Railway Shay No. 4

### El Dorado County Historical Museum

**Mary Cory**  
Museum Administrator

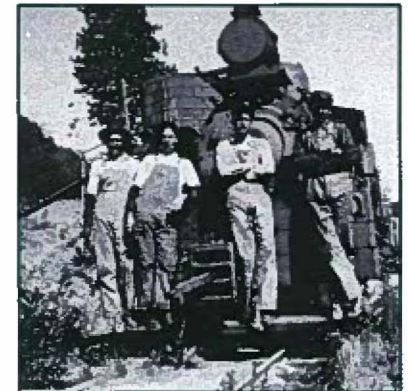
104 Placerville Drive  
(Next to the Fairgrounds)  
Placerville, CA 95667

Phone: 530-621-5865  
E-mail: [museum@co.el-dorado.ca.us](mailto:museum@co.el-dorado.ca.us)

El Dorado County  
Historical Museum

# EL DORADO COUNTY HISTORICAL RAILROAD PARK

*Preserving and interpreting  
county railroad history  
through the preservation,  
interpretation and operation  
of historic artifacts*



**Tel: 530-621-5865**

# El Dorado County Historical Railroad Park



An early photograph of the El Dorado Depot with the school visible on the hill in the background. The El Dorado Community Hall is now located in the old school building. The plan would recreate the depot, loading platform and rail siding

The El Dorado County Historical Railroad Park will be a county museum facility where historical railroad artifacts are displayed and operated for the enjoyment and education of the public. It will be located in the town of El Dorado utilizing the existing Sacramento-Placerville Transportation Corridor (SPTC) right of way, located north of Pleasant Valley Road on Oriental Street.

The Railroad Park will recreate the historic Southern Pacific El Dorado Depot, have additional track for railroad cars, locomotives and support equipment and will have a short section of operating railroad, along with visitor services, exhibit and maintenance facilities.

## El Dorado Western Volunteers

County Historical Museum volunteers have been the "fire in the boiler" for the Railroad Park. They have pushed to restore and someday operate historic railroading artifacts for the past 17 years. Several volunteers formed the non-profit El Dorado Western Railway Foundation in 1997 to secure grants, promote the project and eventually operate the historic railroad. Volunteers, skilled and mechanically knowledgeable, are working on the meticulous restoration of the railroad artifact collection. Museum staff and volunteers are working with the El Dorado County Parks and Recreation Commission, have consulted with the El Dorado County Trails Advisory Committee and spoken of this project with the SPTC Joint Powers Authority.

## Development Plans

It is vital that the Historical Railroad Park comply with all applicable Federal Railroad Administration requirements for operational safety. Narrow gauge (3 feet) artifacts will be commingled with standard gauge (4 feet 8 ½ inches) rail activity along the SPTC by addition of a third rail along the main line track from El Dorado Road to Blanchard Road. Additional track will provide exhibit space, allow rolling stock to be moved and create space for loading and unloading passengers.

Track development will be done in phases with each phase building on previous phases. Initial phases can be done with little or no extra funds using materials already at hand, volunteer labor and with the donation of additional materials, such as railroad ties. By offering rides on the Diamond & Caldor Railbus for a small donation, revenue can be established early in the development and increase as track is laid. Future grants and funding can be pursued as the project progresses. By working with other County departments and commissions, the Railroad Park will be developed in compliance with county regulations and with safety as the number one priority.

## El Dorado County Historical Museum

104 Placerville Drive  
(Next to the Fairgrounds)  
Placerville, CA 95667

Phone: 530-621-5865

E-mail: [museum@co.el-dorado.ca.us](mailto:museum@co.el-dorado.ca.us)