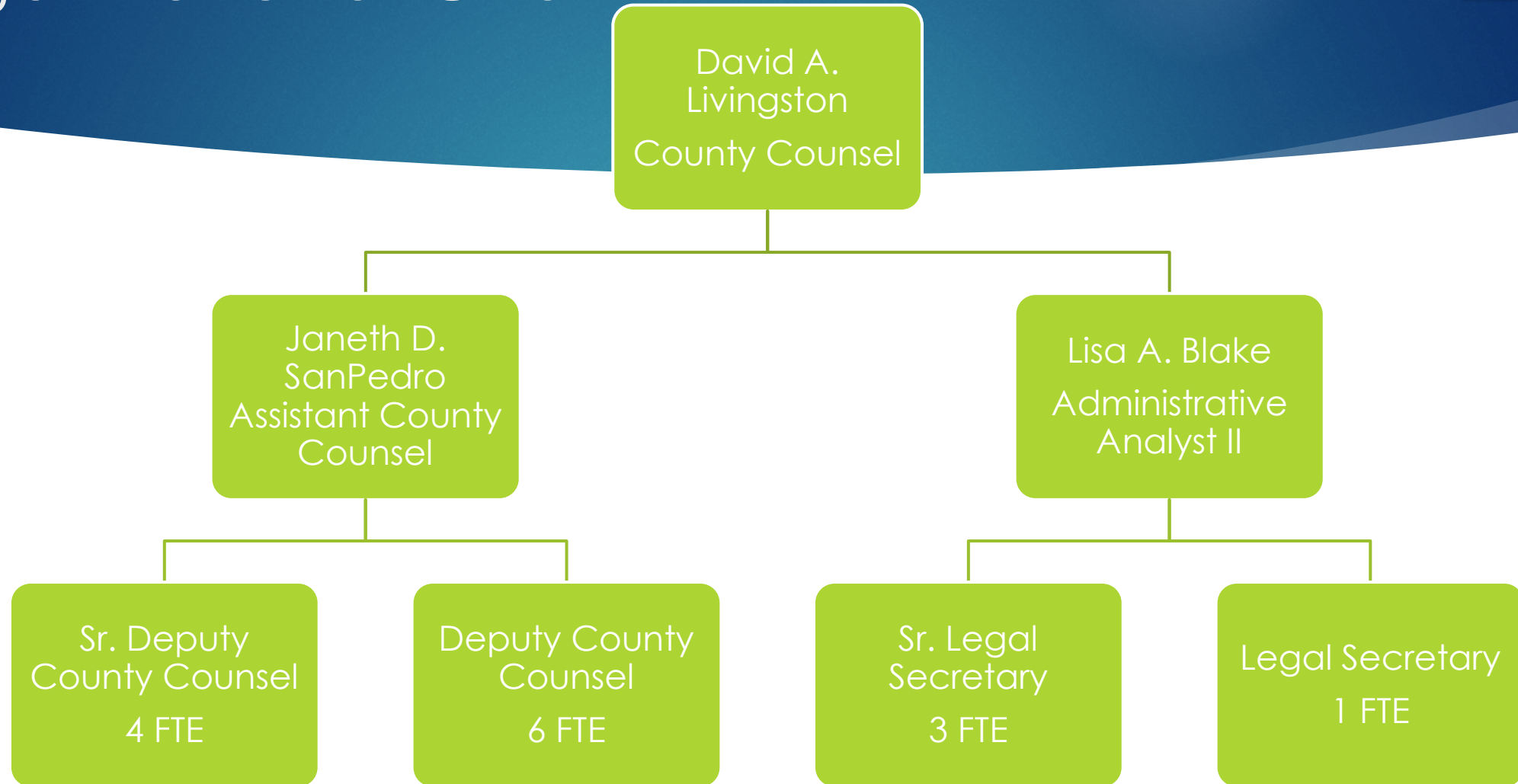




# County Counsel Overview 2024

PRESENTED TO THE BOARD OF SUPERVISORS ON JANUARY 24, 2024

# Organizational Chart



# What we do

- ▶ The Office of the County Counsel is the legal advisor to the County (i.e., the Board of Supervisors, County Departments, and independently elected County officials).
- ▶ A County Counsel's office, once established, assumes the civil functions of the District Attorney (Gov. Code §27642), including the following:
  - ▶ Provide legal services to the County (§ 26520)
  - ▶ Represent the County and its officers and employees in civil actions (§26521)
  - ▶ Act as the legal adviser to the Board of Supervisors and attend Board meetings (§ 26526)
- ▶ County Counsel also represents and advises the court upon request (§27647), the grand jury (Penal Code § 934), the Assessment Appeals Board (§31000.7), the Air Pollution Control District (H&S Code § 40101), and the Resource Conservation District (Pub.Res.Code § 9418).
- ▶ Per County ordinance, the County Counsel's office is required to review all contracts, proposed ordinances, and resolutions.
- ▶ Note that while the Office of the County Counsel is a public law office it does not provide legal advice to members of the public.

# Total Appropriations and Net County Cost

	22/23 (Budgeted)	22/23 (Actual)	23/24 (Budgeted)
Total Appropriations	\$4,126,448	\$3,852,236	\$4,126,448
Total Revenue	\$476,300	\$443,300	\$476,300
FTE's	17	17	17
Net County Cost	\$3,650,148	\$3,408,936	\$3,650,148
% Net County Cost	88%	88%	88%
		NCC ↓ \$238,212	

# Non General Fund Revenue Sources

- ▶ Court-ordered awards of attorney fees
- ▶ Direct charges to departments (e.g., DOT, Risk Management, EMS, EMD, and AQMD)
- ▶ Reimbursement from developer-driven litigation

# Service and Performance Indicators

- ▶ List and describe any service indicators (how much you do) or performance indicators (impact or effectiveness of services) that the department has.

	CY22	CY23
Juvenile dependency cases opened	90	69
Current total open juvenile dependency cases	133	144
Public guardian cases opened	51	33
Current total open public guardian cases	216	242
Legal Services requests received	610	701
Contracts/requisitions reviewed	2086	1616

# Role in the Strategic Plan

- ▶ The County Counsel's Office's primary role in implementing the Strategic Plan is through its support to other County departments in furtherance of their identified strategic plan goals.
- ▶ Additionally, the County Counsel's Office directly contributes to the Strategic Plan through the pursuit of litigation and defense of claims.

# Projected Workload Impacts

Change 1: SB43 - Legal definition change in qualifying persons for Conservatorship under the Lanterman-Petris-Short (LPS) Act.

Change 2 : Community Assistance, Recovery & Empowerment (CARE) Court – New civil court process connecting schizophrenia or psychotic disorders with county behavioral health services under the oversight of a judge.

Change 3: Additional Code Enforcement involvement due to expanded enforcement operations.