

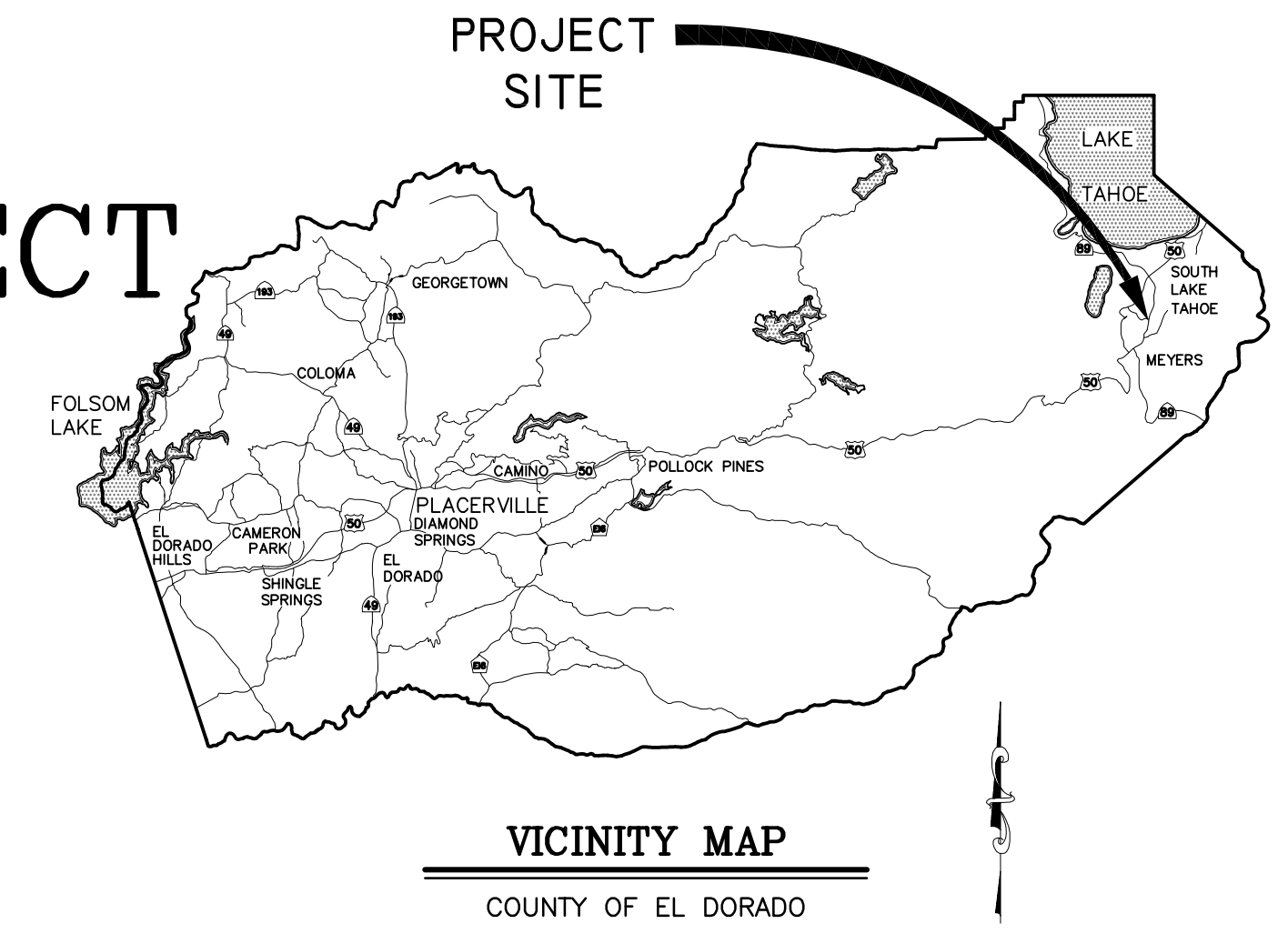
INDEX OF SHEETS

Sheet Number	Sheet Title	Sheet Description
1	i	TITLE SHEET
2	ii	GENERAL NOTES, ABBREVIATIONS, AND LEGEND
3	iii	SHEET INDEX AND EARTHWORK SUMMARY TABLE
4	SC-1	SURVEY CONTROL AND ALIGNMENT LISTING
5	P-1	ELKS CLUB DRIVE ROAD RECONSTRUCT PLAN AND PROFILE
6	P-2	ELKS CLUB DRIVE STORM DRAIN AND CHANNEL PLAN AND PROFILE
7	P-3	TAM O SHANTER
8	X-1	CROSS SECTIONS
9	D-1	DETAIL SHEET
10	EC&R-1	EROSION CONTROL AND REVEGETATION PLAN
11	SS-1	STRIPING SHEET
12	TC-1	TRAFFIC CONTROL PLAN
13	DE-1	DETOUR PLAN

COUNTY OF EL DORADO, CA
 COMMUNITY DEVELOPMENT SERVICES
 DEPARTMENT OF TRANSPORTATION

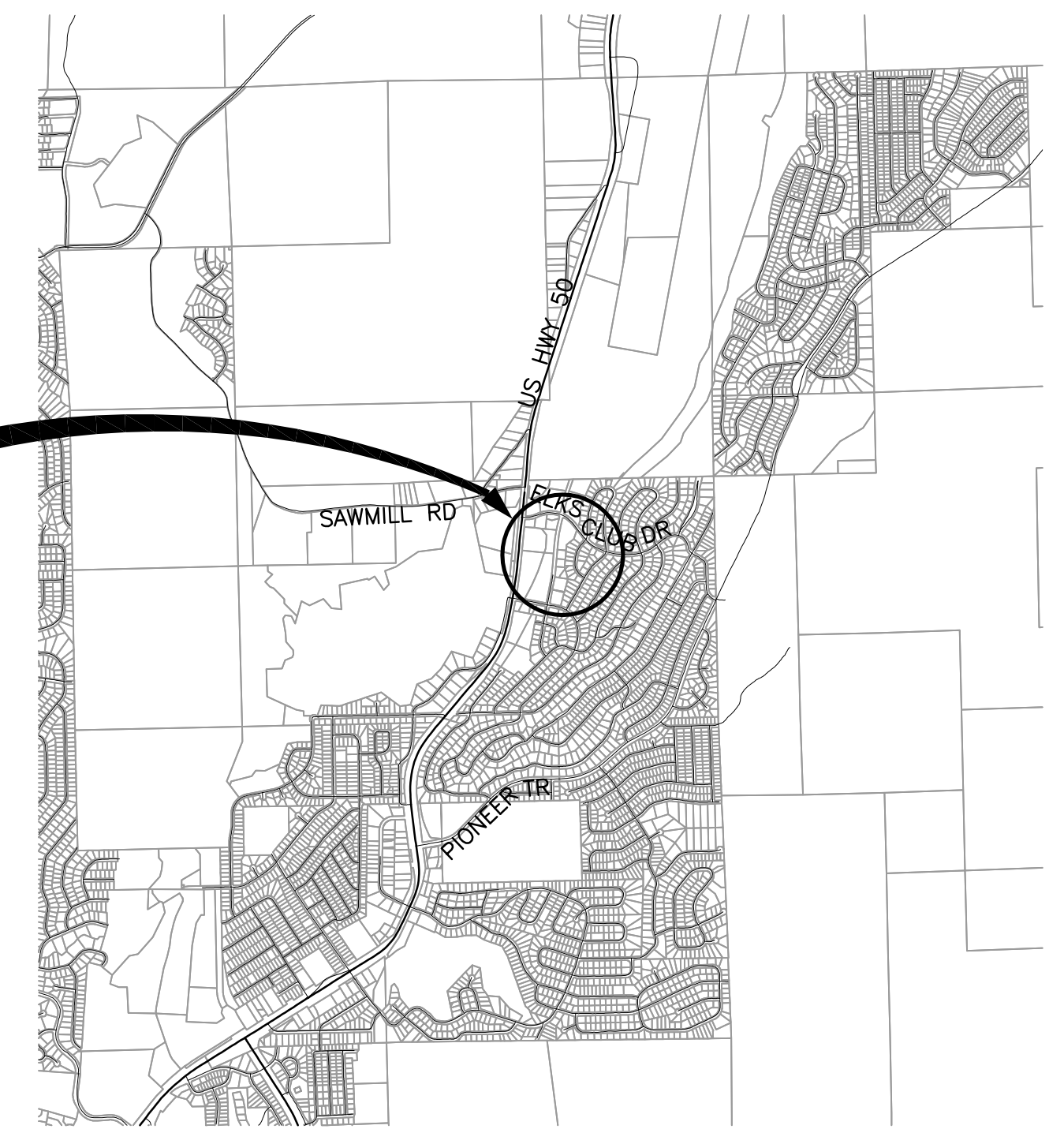
PROJECT PLANS FOR THE CONSTRUCTION OF THE
 2018 ELKS CLUB DRIVE
 EMERGENCY ROAD REPAIR PROJECT

IN THE COUNTY OF EL DORADO, DISTRICT 5,
 COUNTRY CLUB HEIGHTS UNIT NO. 1 SUBDIVISION



To be supplemented with the 2015 Standard Plans and Specifications of the California Department of Transportation, including the 2015 Revised Standard Specifications of the California Department of Transportation, unless otherwise noted.

2018 ELKS CLUB DRIVE
 EMERGENCY ROAD REPAIR
 PROJECT AREA



FEDERAL PROJECT NO. ER 32L0(100)

CONTRACTOR'S LICENSE CLASSIFICATION: Bidders shall be properly licensed to perform the Work pursuant to the State Contractor's License Law (Business and Professions Code section 7000 et seq.) and shall possess a CLASS A LICENSE or equivalent combination of Classes required by the categories and type of Work included in the Contract Documents and Plans, at the time the Contract is awarded, and shall maintain a valid license through completion and acceptance of the Work including guarantee and warranty period. Failure of the successful Bidder to obtain proper and adequate licensing for an award of the Contract shall constitute a failure to execute the Contract, and shall result in forfeiture of the Bidders security.

REVISIONS		
MARK	DATE	BY



SUBMITTED BY: DANIEL W. KIKKERT P.E.
 SENIOR CIVIL ENGINEER
 STATE OF CALIFORNIA NO. 70168

[Signature]
 DATE: JANUARY 22, 2018

CONTRACT NO. PW 17-31191, CIP NO. 78725

2018 ELKS CLUB DRIVE
 EMERGENCY ROAD REPAIR PROJECT

TITLE SHEET

SHEET I OF 13

BOARD OF SUPERVISORS

I	JOHN HIDAHL
II	SHIVA FRENTZEN
III	BRIAN K. VEERKAMP
IV	MICHAEL RANALLI
V	SUE NOVASEL

COUNTY OF EL DORADO
 COMMUNITY DEVELOPMENT SERVICES
 DEPARTMENT OF TRANSPORTATION

(530) 573-7900 (530) 621-5900
 924 B EMERALD BAY RD 2850 FAIRLANE CT
 SOUTH LAKE TAHOE, CA PLACERVILLE, CA
 96150 95667

ADOPTED AND APPROVED BY:

DATE	DATE	DATE
MICHAEL RANALLI CHAIR, COUNTY OF EL DORADO BOARD OF SUPERVISORS	RAFAEL MARTINEZ, DIRECTOR COMMUNITY DEVELOPMENT SERVICES, DEPARTMENT OF TRANSPORTATION	JOHN H. KAILING, P.E., RCE NO. 52426, DEPUTY DIRECTOR OF ENGINEERING COMMUNITY DEVELOPMENT SERVICES, DEPARTMENT OF TRANSPORTATION

GENERAL NOTES

- ALL IMPROVEMENTS WILL BE ACCOMPLISHED UNDER THE APPROVAL, INSPECTION, AND TO THE SATISFACTION OF THE COUNTY OF EL DORADO DEPARTMENT OF TRANSPORTATION (DOT). IMPROVEMENT CONSTRUCTION MUST COMPLY WITH THESE PLANS AND THE 2015 CALTRANS STANDARD PLANS, UNLESS NOTED OTHERWISE. ALL REFERENCES TO THE "STANDARD SPECIFICATIONS" MEAN THE STATE OF CALIFORNIA, DEPARTMENT OF TRANSPORTATION (CALTRANS) 2015 STANDARD SPECIFICATIONS. CONSTRUCTION NOT SPECIFIED ON THESE PLANS OR IN SPECIFIC COUNTY OF EL DORADO (COUNTY) ORDINANCES MUST CONFORM TO THE REQUIREMENTS OF THE STANDARD SPECIFICATIONS. YOU ARE OBLIGATED TO BE FAMILIAR WITH APPLICABLE SECTIONS OF THE STANDARD SPECIFICATIONS NOT DISCUSSED IN THE GENERAL NOTES. THE CONTRACT SPECIAL PROVISIONS SUPERSEDE THE STANDARD SPECIFICATIONS WHERE DISCREPANCIES OCCUR.
- CONSTRUCTION HOURS WILL BE WEEKDAYS BETWEEN 8:00 A.M. AND 6:30 P.M. UNLESS PRIOR APPROVAL IS RECEIVED FROM THE COUNTY DOT.
- THE LOCATIONS AND EXTENT OF UNDERGROUND UTILITIES IN THE WORK AREA AS SHOWN ARE APPROXIMATE AND ARE NOT NECESSARILY COMPLETE. A REASONABLE EFFORT HAS BEEN MADE TO LOCATE AND DELINEATE UTILITIES BASED UPON AVAILABLE RECORDS. YOU MUST DETERMINE THE TYPE, LOCATION, SIZE, AND/OR DEPTH OF THE UTILITIES WITHIN THE WORK AREA BEFORE STARTING WORK. YOU OR ANY SUBCONTRACTOR FOR THIS CONTRACT ARE RESPONSIBLE FOR DAMAGES DUE TO THE FAILURE TO EXACTLY LOCATE AND PRESERVE UNDERGROUND UTILITIES. YOU MUST CONTACT UNDERGROUND SERVICE ALERT AT (800) 642-2444 AT LEAST 48 HOURS BEFORE ANY CONSTRUCTION. SEE THE SPECIAL PROVISIONS FOR NOTIFICATION REQUIREMENTS. YOU ASSUME COMPLETE RESPONSIBILITY FOR DAMAGED UTILITIES.
- UNLESS SHOWN OTHERWISE, YOU ARE RESPONSIBLE FOR THE PROTECTION OF ALL EXISTING SURVEY MONUMENTS AND OTHER SURVEY MARKERS, INCLUDING CONSTRUCTION STAKES DURING CONSTRUCTION AND YOU ARE RESPONSIBLE FOR THE COST TO REPLACE ANY SUCH SURVEY MONUMENTS, MARKERS, OR STAKES.
- YOU WILL PROVIDE ALL LIGHTS, SIGNS, BARRICADES, FLAG PERSONS, PILOT CAR, OR OTHER DEVICES NECESSARY TO CONTROL TRAFFIC THROUGH THE JOB SITE AND FOR PUBLIC SAFETY UNDER THESE PLANS, THE STANDARD SPECIFICATIONS, AND CALIFORNIA MANUAL ON UNIFORM TRAFFIC CONTROL DEVICES (MUTCD).
- YOU AGREE TO ASSUME SOLE RESPONSIBILITY FOR JOB SITE CONDITIONS DURING THE COURSE OF THE WORK, INCLUDING SAFETY OF ALL PERSONS AND PROPERTY, AND FURTHER AGREE THAT THIS REQUIREMENT APPLIES CONTINUOUSLY AND IS NOT LIMITED TO NORMAL WORKING HOURS UNDER THE CONTRACT AND STANDARD SPECIFICATIONS.
- THERE WILL BE NO GRADING OR LAND DISTURBANCE BETWEEN OCTOBER 15 AND MAY 1 UNLESS APPROVALS ARE OBTAINED FROM THE TAHOE REGIONAL PLANNING AGENCY (TRPA), AS PROVIDED IN THE LIMITED EXEMPTION DESCRIBED IN CHAPTER 64, SUBSECTION 64.2.B. OF THE TRPA CODE OF ORDINANCES. APPROVALS FOR GRADING BETWEEN OCTOBER 15 AND MAY 1 MUST ALSO BE OBTAINED FROM THE REGIONAL WATER QUALITY CONTROL BOARD, LAHONTAN. IF REQUIRED, THE COUNTY WILL OBTAIN THESE APPROVALS.
- YOU WILL MAINTAIN A SET OF PLANS ON THE JOB SITE SHOWING "AS-CONSTRUCTED" CHANGES MADE TO DATE. UPON COMPLETION OF THE WORK, YOU WILL GIVE TO THE COUNTY A SET OF PLANS, MARKED UP TO THE SATISFACTION OF THE COUNTY, REFLECTING THE AS-CONSTRUCTED MODIFICATIONS.
- ALL CONTROL STATIONING AND DATA DIMENSIONING REFERENCE THE CENTERLINE OF THE FACILITY SHOWN, UNLESS NOTED OTHERWISE.
- YOU WILL NOT CLOSE OFF ANY UTILITY LINES OR OPEN VALVES OR TAKE ANY OTHER ACTION WHICH WOULD AFFECT THE OPERATION OF WATER OR SEWER SYSTEMS WITHOUT APPROVAL FROM THE SOUTH TAHOE PUBLIC UTILITY DISTRICT (STPUD). APPROVAL MUST BE REQUESTED AT LEAST 48 HOURS BEFORE INTERRUPTION OF THE UTILITY SERVICE IS REQUIRED. ANY INTERRUPTION TO ACTIVE WATER OR SEWER SERVICES, INCLUDING FIRE HYDRANTS, WHETHER INTENTIONAL OR NOT, MUST BE KEPT TO A MINIMUM TIME PERIOD. IF SERVICE TO BUILDINGS IS TO BE OFF FOR MORE THAN FOUR HOURS, YOU MUST ADVISE STPUD.
- YOU ARE REQUIRED TO IMPLEMENT DUST CONTROL MEASURES TO ENSURE THAT DUST RESULTING FROM YOUR ACTIVITIES IS CONTROLLED AND COMPLIES WITH THE PROVISIONS OF SECTION 7, "LEGAL RELATIONS AND RESPONSIBILITY TO THE PUBLIC," AND SECTION 14, "ENVIRONMENTAL STEWARDSHIP," OF THE STANDARD SPECIFICATIONS, COUNTY, AND LOCAL ORDINANCES. SEE THE SPECIAL PROVISIONS FOR DUST AND TRACKING CONTROL AND SWEEPING REQUIREMENTS.
- YOU ARE RESPONSIBLE FOR IMPLEMENTING ALL TEMPORARY EROSION CONTROL MEASURES. THE TEMPORARY EROSION CONTROL MEASURES MUST COMPLY WITH THE TRPA "HANDBOOK OF BEST MANAGEMENT PRACTICES" AND THE APPLICABLE STORM WATER POLLUTION PREVENTION PLAN (SWPPP) OR WATER POLLUTION CONTROL PLAN (WPCP). THE DOT WILL CONTACT TRPA BEFORE THE START OF THE WORK FOR A PRE-GRADING INSPECTION OF THE INSTALLED TEMPORARY EROSION CONTROL FACILITIES. YOU ARE RESPONSIBLE FOR THE MAINTENANCE AND PERFORMANCE OF THE TEMPORARY EROSION CONTROL MEASURES THROUGHOUT THE DURATION OF THE WORK. SEE THE SPECIAL PROVISIONS REGARDING TEMPORARY EROSION CONTROL FACILITY REMOVAL.
- CONSTRUCTION LIMITS SHOWN DELINEATE THE BOUNDARIES FOR YOUR ACTIVITIES BEYOND THE COUNTY STREET RIGHT-OF-WAY. CONSTRUCTION LIMIT FENCING MUST BE ERECTED ALONG THESE BOUNDARIES BEFORE WORK STARTS. VEGETATION WITHIN THESE LIMITS MUST BE PROTECTED TO THE EXTENT FEASIBLE. ALL TREES MUST BE PROTECTED UNLESS SHOWN TO BE REMOVED.
- UNLESS NOTED OTHERWISE, ALL REVEGETATION IS TO BE COMPLETED BY OTHERS.
- YOU WILL ONLY USE THE DESIGNATED SITES SHOWN FOR STORAGE OF EQUIPMENT AND MATERIALS. YOU ARE RESPONSIBLE FOR THE SECURITY OF EQUIPMENT AND MATERIALS.
- IT IS YOUR AND YOUR SUBCONTRACTOR(S) RESPONSIBILITY TO EXAMINE THE JOB SITE BEFORE THE OPENING OF BID PROPOSALS. YOU MUST BECOME FAMILIAR WITH THE NATURE AND LOCATION OF THE WORK AND THE GENERAL AND LOCAL CONDITIONS, PARTICULARLY THOSE AFFECTING THE AVAILABILITY OF TRANSPORTATION, THE DISPOSAL, HANDLING, AND STORAGE OF MATERIALS, AVAILABILITY OF LABOR, WATER, ELECTRICITY, ROADS, THE UNCERTAINTIES OF WEATHER, THE CONDITIONS OF THE GROUND, SURFACE AND SUBSURFACE MATERIALS, THE EQUIPMENT AND FACILITIES NEEDED FOR AND DURING THE PERFORMANCE OF THE WORK. FAILURE BY YOU OR YOUR SUBCONTRACTOR(S) TO ACQUAINT YOURSELVES WITH THE INFORMATION AVAILABLE WILL NOT RELIEVE YOU OR YOUR SUBCONTRACTOR(S) FROM RESPONSIBILITY FOR PROPERLY ESTIMATING THE DIFFICULTY AND COST OF SUCCESSFULLY PERFORMING THE WORK.
- ELEVATIONS FOR PIPE INVERTS, FLOWLINES, TOPS OF GRATES, RIMS, ETC., ARE BASED ON THE TOPOGRAPHIC INFORMATION SHOWN. YOU WILL VERIFY ALL NECESSARY SURFACE ELEVATIONS IN THE FIELD AND NOTIFY THE DOT OF ANY DISCREPANCIES WHICH MIGHT AFFECT THE OPERATION OF THE NEW FACILITIES BEFORE BREAKING GROUND FOR THE INSTALLATION. THE DOT MUST BE CONTACTED IF ELEVATIONS ARE INCORRECT SO PROPER ADJUSTMENTS CAN BE MADE BEFORE THE INSTALLATION OF THE FACILITIES.
- EXCEPT FOR THOSE OBTAINED BY THE DOT, YOU MUST OBTAIN, AT YOUR EXPENSE, ALL PERMITS, LICENSES, INSURANCE POLICIES, ETC., NECESSARY TO COMPLY WITH STATE AND LOCAL LAWS ASSOCIATED WITH THE PERFORMANCE OF THE WORK.
- YOU ARE RESPONSIBLE TO REVIEW THE CONTRACT DOCUMENTS FOR SUBMITTALS REQUIRED FOR COUNTY REVIEW AND ACCEPTANCE.
- THE COUNTY WILL PROVIDE CONSTRUCTION STAKING IN COMPLIANCE WITH SECTION 5-1.26 OF THE STANDARD SPECIFICATIONS.
- THE PLANS SHOW SLOPE LENGTHS FOR PIPE ROUNDED TO THE NEAREST FOOT. ALL PIPE LENGTHS AND INVERT ELEVATIONS SHOWN ON THE PLANS ARE TO THE CENTERLINE OF THE STRUCTURES TO WHICH THE PIPES ARE ATTACHED. SEE THE STANDARD SPECIFICATIONS FOR THE MAXIMUM ALLOWABLE DEFLECTION ANGLE AT EACH PIPE JOINT.
- YOU ARE RESPONSIBLE TO MAINTAIN THE GRADING LIMITS AS SHOWN ON THE PLANS, DETAILS, CROSS SECTIONS, AND AS DIRECTED BY THE ENGINEER.

ABBREVIATIONS

NOTE: LOWER CASE TEXT WITHIN PLAN SET INDICATES EXISTING

△	DELTA = DEFLECTION ANGLE	MISC	MISCELLANEOUS
A	ARCH OR ASPEN	MOC	MID POINT ON CURVE
AB	AGGREGATE BASE	MOD	MODIFIED
ABAND	ABANDONED	N	NORTH
ABC	ARTICULATED BLOCK CHANNEL	NEG	NEGLECTIBLE
AC	ASPHALT CONCRETE	NGVD	NATIONAL GEODETIC VERTICAL DATUM
AP	ANGLE POINT	NIC	NOT IN CONTRACT
APN	ASSESSOR'S PARCEL NUMBER	NTS	NOT TO SCALE
BC	BEGIN CURVE	OAE	OR APPROVED EQUAL
BCR	BEGIN CURB RETURN	OC	ON CENTER
BGN	BEGIN	OD	OUTSIDE DIAMETER
BLC	BLANKET-LINED CHANNEL	OG	ORIGINAL GROUND
BVCE	BEGIN VERTICAL CURVE ELEVATION	OH	OVERHEAD
BVCS	BEGIN VERTICAL CURVE STATION	OVEREX OR O/X	OVEREXCAVATION
C	CEDAR	P	PINE
CALCS	CALCULATIONS	PC	POINT OF BEGINNING OF CURVE
CATV	CABLE TELEVISION	PCC	PORTLAND CEMENT CONCRETE OR POINT OF COMPOUND CURVE
CC	CENTER TO CENTER	PERF	PERFORATED
CF	CUBIC FEET OR CURB FACE	PCVCE	POINT OF COMPOUND VERTICAL CURVE ELEVATION
CHD	CHORD DIRECTION	PCVCS	POINT OF COMPOUND VERTICAL CURVE STATION
CIR	CIRCLE	PL	PROPERTY LINE
CL	CENTERLINE	POR	PORTION
CL	CLASS OR CENTERLINE	PP	POWER/UTILITY POLE
CLR	CLEAR	PRC	POINT OF REVERSE CURVE
CO	CURB OPENING OR CLEANOUT	PROP	PROPOSED
CO	COUNTY	PRVCE	POINT OF REVERSE VERTICAL CURVE ELEVATION
CONC	CONCRETE	PRVCS	POINT OF REVERSE VERTICAL CURVE STATION
CONST	CONSTRUCT	PT	POINT OR POINT OF TANGENCY
CMP	CORRUGATED METAL PIPE	PUE	PUBLIC UTILITY EASEMENT
CSP	CORRUGATED STEEL PIPE	PVC	POLYVINYL CHLORIDE
CT	CALTRANS OR COURT	PVIE	POINT OF VERTICAL INTERSECTION ELEVATION
CTC	CALIFORNIA TAHOE CONSERVANCY	PVIS	POINT OF VERTICAL INTERSECTION STATION
CY	CUBIC YARD	PVMT	PAVEMENT
C&G	CURB AND GUTTER	R	RADIUS
D	DEPTH	R&R	REMOVE & REPLACE
DBL	DOUBLE	RC	RELATIVE COMPACTION
DET	DETAIL	RCP	REINFORCED CONCRETE PIPE
DI	DRAINAGE INLET OR DUCTILE IRON	RD	ROAD
DIA OR Ø	DIAMETER	REF	REFERENCE
DISS	DISSIPATOR	REQ'D	REQUIRED
DR	DRIVE	RLC	ROCK-LINED CHANNEL
D/W	DRIVEWAY	ROW	RIGHT-OF-WAY
E	EAST	RSF	REINFORCED SILT FENCE
EA	EACH	RSP	ROCK SLOPE PROTECTION
EC	END OF CURVE	RT	RIGHT
ECR	END OF CURB RETURN	RW	RETAINING WALL
ELEC	ELECTRIC	S	SOUTH OR SANITARY SEWER
ELEV	ELEVATION	SCO	SEWER CLEAN OUT
ENGR	ENGINEER	SD	STORM DRAIN
EP	EDGE OF PAVEMENT	SDMH	STORM DRAIN MANHOLE
ESA	ENVIRONMENTALLY SENSITIVE AREA	SEZ	STREAM ENVIRONMENT ZONE
ESMT	EASEMENT	SF	SQUARE FEET
EVCE	END VERTICAL CURVE ELEVATION	SHT	SHEET
EVCS	END VERTICAL CURVE STATION	SL	SLOPE LENGTH
EX OR EXIST	EXISTING	SMH	SEWER MANHOLE
F	FIR	ST	SEDIMENT TRAP OR STREET STATION
FES	FLARED END SECTION	STA	STATION
FG	FINISHED GRADE	STD	STANDARD
FH	FIRE HYDRANT	STL	STEEL
FL	FLOWLINE	STPUD	SOUTH TAHOE PUBLIC UTILITY DISTRICT
FS	FINISH SURFACE	SWPPP	STORM WATER POLLUTION PREVENTION PLAN
G	GAS	T	TELEPHONE
GA	GAUGE	TBC	TOP BACK OF CURB
GB	GRADE BREAK	TBD	TOP BACK OF DIKE
GLS	GRASS-LINED SWALE	TBR	TO BE REMOVED
GW	GROUND WATER	TD	TOP OF DIKE
H	HORIZONTAL	TG	TOP OF GRATE
HDPE	HIGH DENSITY POLYETHYLENE	TTL	TOTAL
HP	HIGH POINT	TRANS	TRANSITION
HWL	HIGH WATER LINE	TRM	TURF REINFORCEMENT MAT
ID	INSIDE DIAMETER	TRPA	TAHOE REGIONAL PLANNING AGENCY
IE	INVERT ELEVATION	TYP	TYPICAL
INCR	INCREASE	UG	UNDERGROUND
INST	INSTALL	UKN	UNKNOWN
INTRXN	INTERSECTION	USFS	UNITED STATES FOREST SERVICE
L	LENGTH	V	VERTICAL
LC	LENGTH OF CHORD	W	WEST OR WATER
LF	LINEAR FEET	W/O	WITHOUT
LP	LOW POINT	WC	WILLOW CLUSTER
LT	LEFT	WV	WATER VALVE
MAT'L	MATERIAL		

LEGEND

EXISTING	PROPOSED
(SCREENED AND/OR DASHED) EXISTING (AS NOTED)	--- CENTERLINE
--- RIGHT-OF-WAY OR PROPERTY LINE	----- SAWCUT (AS NOTED)
--- EASEMENT	XXXX.XX ELEVATION
--- LAND CAPABILITY BOUNDARY	XXXXXX ELEVATION, EG CL, PROPOSED (PROFILE ONLY)
--- 10' SEZ SETBACK	XXXXXX CSP INLET/RISER OR STORM DRAIN MANHOLE, DRAINAGE INLET
OR	VI CUT OR FILL SLOPE
● FOUND MONUMENT	⊗ DETAIL REF NUMBER SHEET NUMBER
△ SURVEY CONTROL POINT	⊗ ROCK
XXXX.X ELEVATION	SD PIPE (MATERIAL AS NOTED)
⊙ SEWER MANHOLE	-RSF-ESA- REINFORCED SILT FENCE AND TYPE ESA FENCE
⊙ SCO SEWER CLEAN OUT	▷ FLARED END SECTION
⊙ DRAINAGE INLET	#/# SLOPE RATIO, H:V
gm GAS METER	==== ROCK-LINED CHANNEL
WV WATER VALVE	==== BLANKET-LINED CHANNEL
WM WATER METER	⊗ TREE REMOVAL
⊙ MONITORING WELL	~ FLOWLINE
--- WATER LINE	- - - CUT
--- SEWER LINE	- - - FILL
--- GAS LINE	
--- STORM DRAIN	
--- OH-oh- OVERHEAD UTILITIES	
⊙ POWER/UTILITY POLE	
⊙ UTILITY POLE & GUY ANCHOR	
⊙ FIRE HYDRANT	
⊙ FENCE	
⊙ FLOWLINE	
⊙ TREE, DIAMETER AND TYPE	
⊙ STUMP	
⊙ WILLOW CLUSTER	

UTILITIES

CABLE TELEVISION	CHARTER COMMUNICATIONS, (775) 588-1077
NATURAL GAS	SOUTHWEST GAS, (530) 543-3225
ELECTRIC	LIBERTY UTILITIES, (530) 541-6400
SEWER & WATER	SOUTH TAHOE PUD, (530) 544-6474
TELEPHONE	AT&T, (530) 888-2031
STORM DRAIN	CO. OF EL DORADO DEPARTMENT OF TRANSPORTATION, (530) 573-3180

DRAWING NAME: \nodot\elk\18-elk-emergency\18-elk-emergency.dwg; PROJECT: 18-elk-emergency\18-elk-emergency.dwg; DATE: 01/2018; ORIGINAL SCALE IS IN INCHES; FOR REDUCED PLANS; REVISION; SHEET ii of 13; CONTRACT NO. PW 17-31191; CIP No. 78725

REVISION	NUMBER	DATE	DESCRIPTION	BY



PREPARED UNDER THE SUPERVISION OF:

 REGISTERED CIVIL ENGINEER
JANUARY 22, 2018
 DATE:

DESIGNED: KIS
 DRAWN: KIS
 CHECKED: DWK
 DATE: 01/2018
 ROAD NUMBER: ---



**COUNTY OF EL DORADO
 COMMUNITY DEVELOPMENT SERVICES
 DEPARTMENT OF TRANSPORTATION**

**2018 ELKS CLUB DRIVE
 EMERGENCY ROAD REPAIR PROJECT
 GENERAL NOTES, ABBREVIATIONS, AND LEGEND**

SHEET
 ii
 of 13
 CONTRACT NO.
PW 17-31191
 CIP No.
78725

EARTHWORK SUMMARY BY IMPROVEMENT/WORK AREA
ALL VOLUMES ARE IN CUBIC YARDS

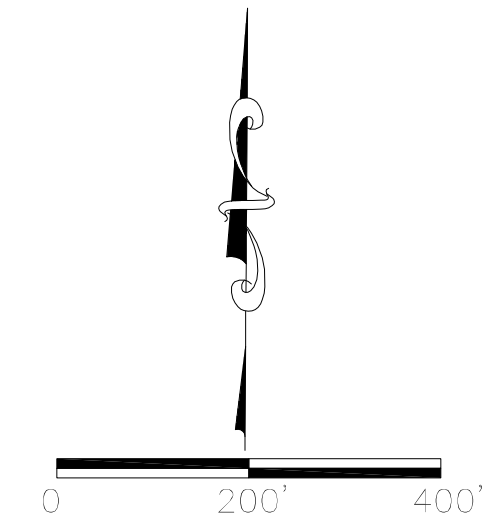
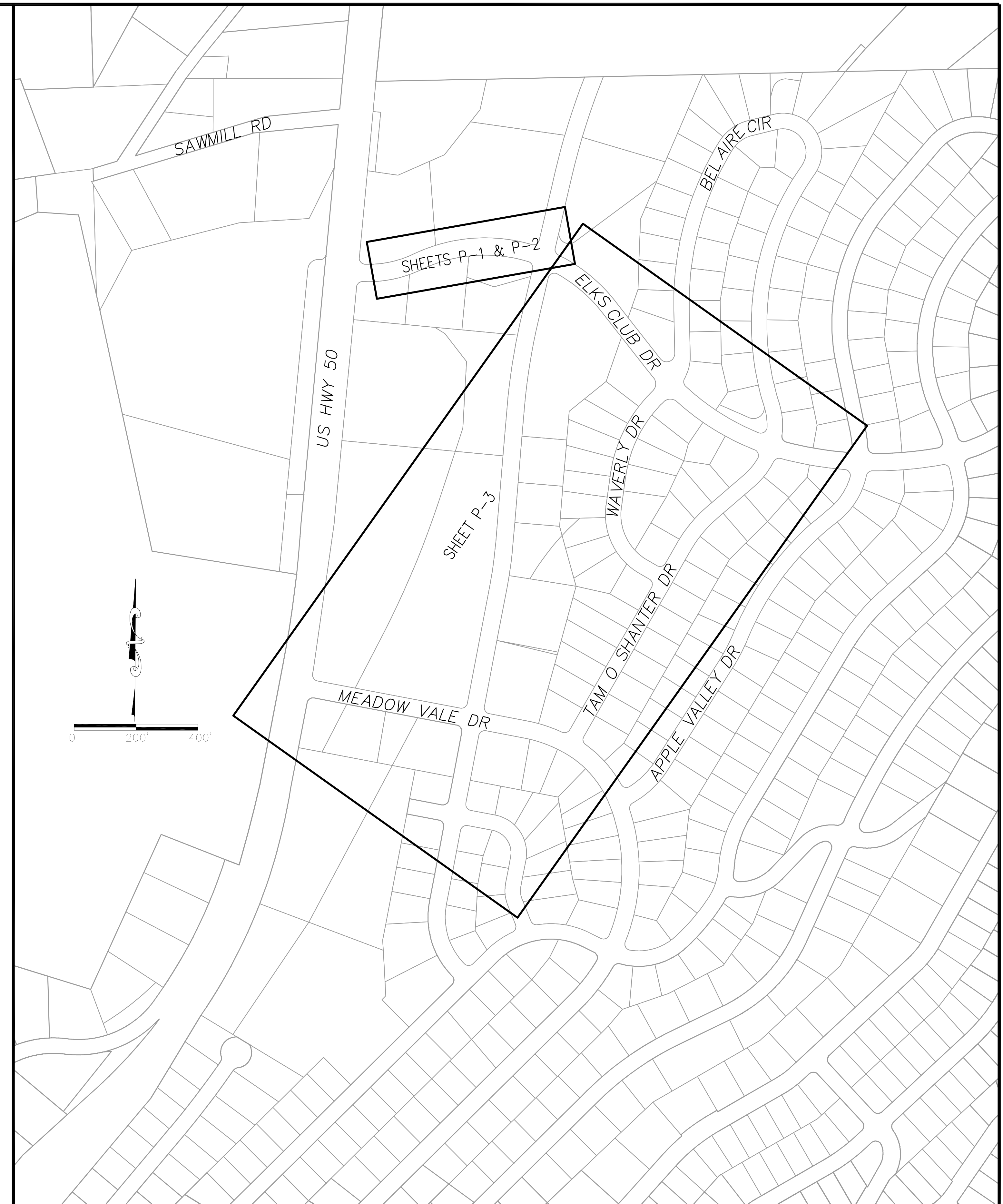
WORK AREA	PLAN SHEET	CUT	FILL	SALVAGED SOIL	HUMUS	TOPSOIL MIX	MULCH
ELKS CLUB ROAD RECONSTRUCT	P-1		66.5				
STORM DRAIN PIPE R AND R	P-2	3.0	2.5				
PIPE INLET AND OUTLET R AND R	P-2	9.0	3.0	*	*	*	*
BLC	P-2	37.0	29.0	27	9	36.0	
ROAD SHOULDER TIE IN	P-2		15.0	7.5	2.5	10.0	5
SUBTOTAL		49.0	116.0	34.5	11.5	46.0	5.0

*QUANTITIES ARE INCLUDED IN THE ROAD SHOULDER TIE IN

QUANTITY INCLUDES WORK AREA REVEGETATION FOR THE ASSOCIATED IMPROVEMENT WHICH ALSO INCLUDES ANY REVEGETATION OVER PIPES CONTAINED WITHIN THE SAME WORK AREA.

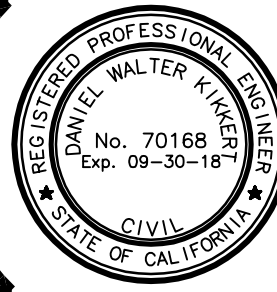
THE QUANTITIES SHOWN HAVE BEEN CALCULATED USING THE TOPOGRAPHIC INFORMATION SHOWN ON THE PLANS. THE VOLUMES SHOWN ARE RAW, MEANING THAT NEITHER SHRINKAGE, SUBSIDENCE, NOR BULKING HAVE BEEN TAKEN INTO ACCOUNT. FOR THE QUANTITIES SHOWN IT IS ASSUMED THAT NO ROCK WAS ENCOUNTERED. IT IS YOUR RESPONSIBILITY TO REVIEW THESE QUANTITIES AND APPLY THE NECESSARY FACTORS TO DETERMINE THE VOLUME OF IMPORT MATERIAL NECESSARY (OR IF IT IS NECESSARY).

QUANTITY OF SALVAGED SOIL IN THE SUMMARY TABLE REFLECTS THAT AMOUNT REQUIRED FOR THE 3:1 RATIO FOR TOPSOIL MIX. YOU MAY SALVAGE SOIL FROM ANY OF THE LOCATIONS DESCRIBED IN SECTION 21-2.02C OF THE SPECIAL PROVISIONS AS LONG AS THE REQUIRED QUANTITY IS MET.



FOR REDUCED PLANS 2 ORIGINAL SCALE IS IN INCHES

REVISION	NUMBER	DATE	DESCRIPTION	BY



PREPARED UNDER THE SUPERVISION OF:

 REGISTERED CIVIL ENGINEER
JANUARY 22, 2018
 DATE:

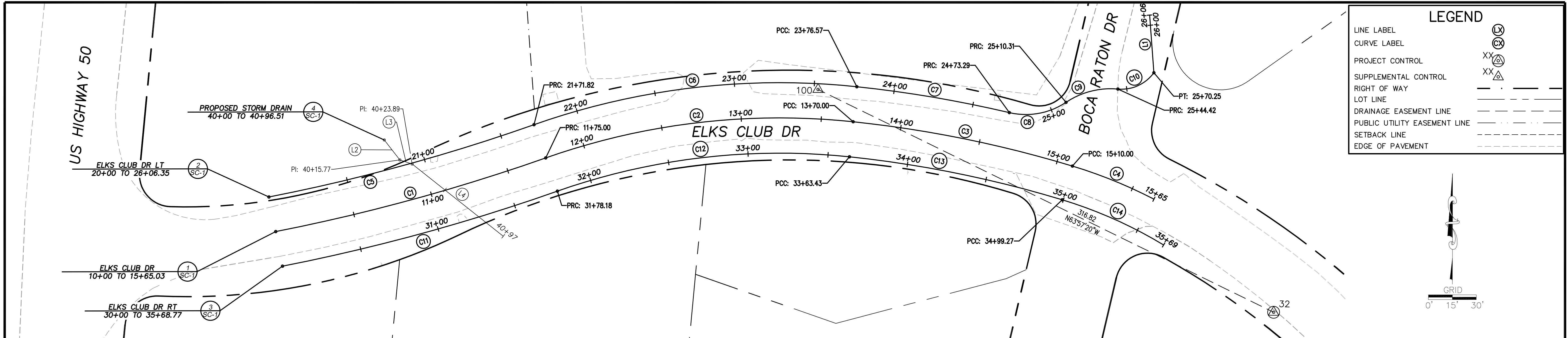
DESIGNED: KIS
 DRAWN: KIS
 CHECKED: DWK
 DATE: 01/2018
 ROAD NUMBER: ---



COUNTY OF EL DORADO
COMMUNITY DEVELOPMENT SERVICES
DEPARTMENT OF TRANSPORTATION

2018 ELKS CLUB DRIVE
EMERGENCY ROAD REPAIR PROJECT
SHEET INDEX AND EARTHWORK SUMMARY TABLE

SHEET
 iii
 3 of 13
 CONTRACT NO.
PW 17-31191
 CIP No.
78725



HORIZONTAL DATUM
 BASIS OF BEARINGS FOR SURVEY CONTROL IS GRID NORTH, CALIFORNIA COORDINATE SYSTEM (NAD 83) ZONE 2, US SURVEY FT, 1991.35 EPOCH. ESTABLISHED USING CONVENTIONAL MEASUREMENTS TO CONTROL POINTS SHOWN ON THIS SHEET. ALL DISTANCES ARE GRID DISTANCES. DIVIDE BY .999622 TO OBTAIN GROUND DISTANCES.

VERTICAL DATUM
 ELEVATION DATUM IS BASED UPON THE NORTH AMERICAN VERTICAL DATUM OF 1929. TBM POINTS ARE CONTROL POINTS SHOWN ON THIS SHEET

NUMBER	BEG STATION	END STATION	DESCRIPTION	LENGTH	RADIUS	COURSE	DELTA	BEG NORTHING	BEG EASTING	END NORTHING	END EASTING
(C1)	10+00	11+75	CURVE LEFT	175.00	1210.00	----	81°17'12"	2086470.48	7129538.42	2086539.05	7129707.11
(C2)	11+75	13+70	CURVE RIGHT	195.00	440.00	----	25°23'33"	2086516.48	7129707.11	2086539.05	7129899.20
(C3)	13+70	15+10	CURVE RIGHT	140.00	740.00	----	10°50'23"	2086539.05	7129899.20	2086511.38	7130036.22
(C4)	15+10	15+65.03	CURVE RIGHT	55.03	300.00	----	10°30'36"	2086511.38	7130036.22	2086490.71	7130087.14

ELKS CLUB DR CENTERLINE ALIGNMENT
 10+00 TO 15+85

NUMBER	BEG STATION	END STATION	DESCRIPTION	LENGTH	RADIUS	COURSE	DELTA	BEG NORTHING	BEG EASTING	END NORTHING	END EASTING
(C5)	20+00	21+71.82	CURVE LEFT	171.82	1188.00	----	81°17'12"	2086492.07	7129534.18	2086537.23	7129699.80
(C6)	21+71.82	23+76.57	CURVE RIGHT	204.75	462.00	----	25°23'33"	2086537.23	7129699.80	2086560.93	7129901.50
(C7)	23+76.57	24+73.29	CURVE RIGHT	96.72	762.00	----	7°16'22"	2086560.93	7129901.50	2086544.75	7129996.79
(C8)	24+73.29	25+10.31	CURVE LEFT	37.02	45.00	----	47°08'05"	2086544.75	7129996.79	2086551.19	7130032.20
(C9)	25+10.31	25+44.42	CURVE RIGHT	34.11	50.00	----	39°04'59"	2086551.19	7130032.20	2086559.46	7130064.61
(C10)	25+44.42	25+70.25	CURVE RIGHT	25.83	25.00	----	59°11'44"	2086559.46	7130064.61	2086569.66	7130087.10
(C11)	25+70.25	26+06.35	LINE	36.10	----	----	N41°2'31"W	2086569.66	7130087.10	2086605.66	7130084.45

ELKS CLUB DR LEFT ALIGNMENT
 20+00 TO 26+06.35

NUMBER	BEG STATION	END STATION	DESCRIPTION	LENGTH	RADIUS	COURSE	DELTA	BEG NORTHING	BEG EASTING	END NORTHING	END EASTING
(C11)	30+00	31+78.18	LINE	178.18	1232.00	----	81°17'12"	2086448.89	7129542.66	2086495.73	7129714.42
(C12)	31+78.18	33+63.43	LINE	185.25	418.00	----	25°23'33"	2086495.73	7129714.42	2086517.17	7129896.90
(C13)	33+63.43	34+99.27	LINE	135.84	718.00	----	10°50'23"	2086517.17	7129896.90	2086490.32	7130029.85
(C14)	34+99.27	35+68.77	LINE	69.50	278.00	----	14°19'26"	2086490.32	7130029.85	2086462.13	7130093.18

ELKS CLUB DR RIGHT ALIGNMENT
 30+00 TO 35+68.77

NUMBER	BEG STATION	END STATION	DESCRIPTION	LENGTH	RADIUS	COURSE	DELTA	BEG NORTHING	BEG EASTING	END NORTHING	END EASTING
(L2)	40+00	40+15.77	LINE	15.77	----	----	S37°53'09"E	2086527.68	7129606.27	2086515.23	7129615.95
(L3)	40+15.77	40+23.89	LINE	8.12	----	----	S71°38'32"E	2086515.23	7129615.95	2086512.67	7129623.66
(L4)	40+23.89	40+96.51	LINE	72.62	----	----	S51°36'57"E	2086512.67	7129623.66	2086467.58	7129680.59

PROPOSED STORM DRAIN ALIGNMENT
 40+00 TO 40+96.51

CONTROL NUMBER	NORTHING	EASTING	ELEVATION	DESCRIPTION
32	2086420.10	7130161.92	6269.73	10" SPIKE
100	2086559.21	7129877.27	6266.77	10" SPIKE

PROJECT CONTROL ESTABLISHED FOR THE DESIGN AND CONSTRUCTION OF THE COUNTY OF EL DORADO COUNTRY ELKS CLUB DR EMERGENCY ROAD REPAIR PROJECT (JN 78725)

FOR REDUCED PLANS ORIGINAL SCALE IS IN INCHES

REVISION	NUMBER	DATE	DESCRIPTION	BY



PREPARED UNDER THE SUPERVISION OF:
Lu A. Manzano
 PROFESSIONAL LAND SURVEYOR
 JANUARY 23, 2018

DESIGNED: KIS
 DRAWN: KIS
 CHECKED: LAM
 DATE: 01/2018
 ROAD NUMBER:



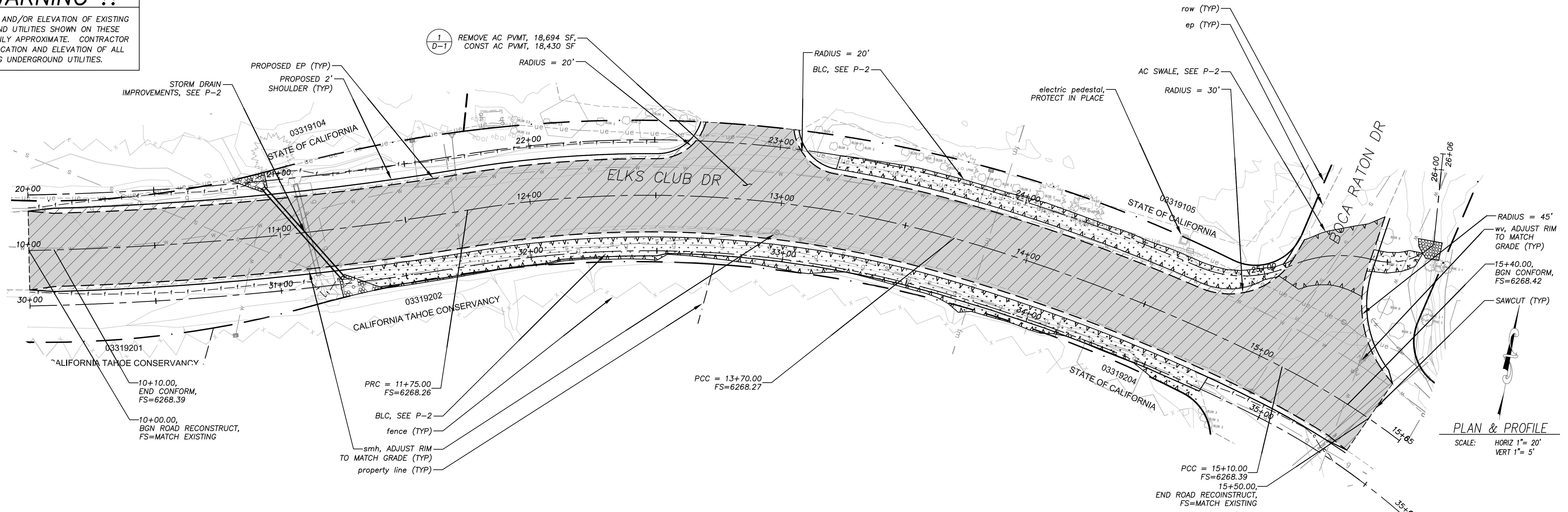
COUNTY OF EL DORADO
 COMMUNITY DEVELOPMENT SERVICES
 DEPARTMENT OF TRANSPORTATION

2018 ELKS CLUB DRIVE
 EMERGENCY ROAD REPAIR PROJECT
 SURVEY CONTROL AND ALIGNMENT LISTING

SHEET
SC-1
 4 of 13
 CONTRACT NO.
PW 17-31191
 CIP No.
78725

!! WARNING !!

THE LOCATION AND/OR ELEVATION OF EXISTING UNDERGROUND UTILITIES SHOWN ON THESE PLANS ARE ONLY APPROXIMATE. CONTRACTOR TO VERIFY LOCATION AND ELEVATION OF ALL EXISTING UNDERGROUND UTILITIES.



PLAN & PROFILE
SCALE: HORIZ 1" = 20'
VERT 1" = 5'

Drawing name: \\caddis\at-el-engineering\proj_30_projects\78725-elks-engineering\WP\AN\ELKS_Plan.dwg

FOR REDUCED PLANS ORIGINAL SCALE IS IN INCHES

REVISION	NUMBER	DATE	DESCRIPTION	BY



PREPARED UNDER THE SUPERVISION OF:
[Signature]
REGISTERED CIVIL ENGINEER
DATE: **JANUARY 22, 2018**

DESIGNED: KIS
DRAWN: KIS
CHECKED: DWK
DATE: 01/2018
ROAD NUMBER: ---



COUNTY OF EL DORADO
COMMUNITY DEVELOPMENT SERVICES
DEPARTMENT OF TRANSPORTATION

2018 ELKS CLUB DRIVE
EMERGENCY ROAD REPAIR PROJECT
ELKS CLUB DRIVE ROAD RECONSTRUCT
PLAN AND PROFILE

SHEET
P-1
5 of 13
CONTRACT NO.
PW 17-31191
DIP No.
78725

!! WARNING !!

THE LOCATION AND/OR ELEVATION OF EXISTING UNDERGROUND UTILITIES SHOWN ON THESE PLANS ARE ONLY APPROXIMATE. CONTRACTOR TO VERIFY LOCATION AND ELEVATION OF ALL EXISTING UNDERGROUND UTILITIES.

10+89.04, 24.37' LT
= SD STA 40+18.60, BGN ROCK DISS,
FL=6265.54, MATCH EXISTING

10+95.04, 19.37' LT, (4)
= SD STA 40+26.43,
INSTALL 18" FES W/
ROCK DISS, 3 CY, IE 6265.05
REMOVE GUNITE AND
FILL DEPRESSION
18" hdpe, TBR,
SEE SPECIAL PROVISIONS

13+19.30, 22.00' LT
= LT STA 23+23.33,
BGN BLC,
FL=6267.40±, MATCH EX

13+70.00, 22.00' LT
= LT STA 23+76.57,
PCC, FL=6267.13

CONSTRUCT BLC, (3)
20 CY (D-T) (2)
CONSTRUCT AC SWALE
14+95.35, 37.09' LT
= LT STA 25+10.31, PRC,
END BLC, BGN AC SWALE, FL=6266.47

15+34.06, 66.61' LT
= LT STA 25+64.59, END BLC, BGN
RSP, FL=6266.19±, MATCH EX
(3)
CONSTRUCT BLC,
4 CY (D-1)

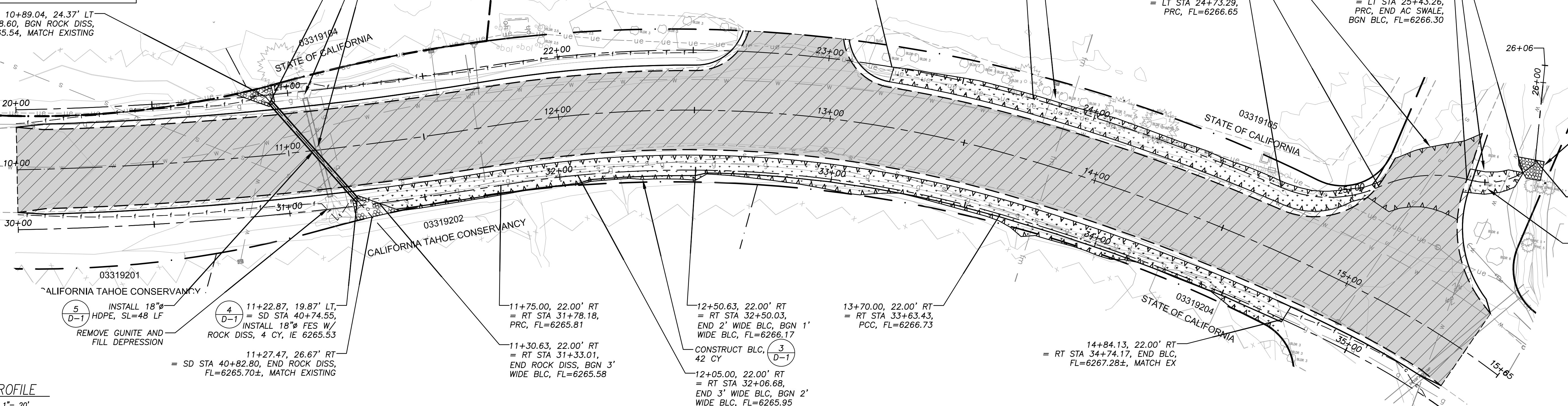
14+63.93, 22.00' LT
= LT STA 24+73.29,
PRC, FL=6266.65

15+20.26, 54.20' LT
= LT STA 25+43.26,
PRC, END AC SWALE,
BGN BLC, FL=6266.30

CONSTRUCT (6)
RSP, 4 CY (D-1)

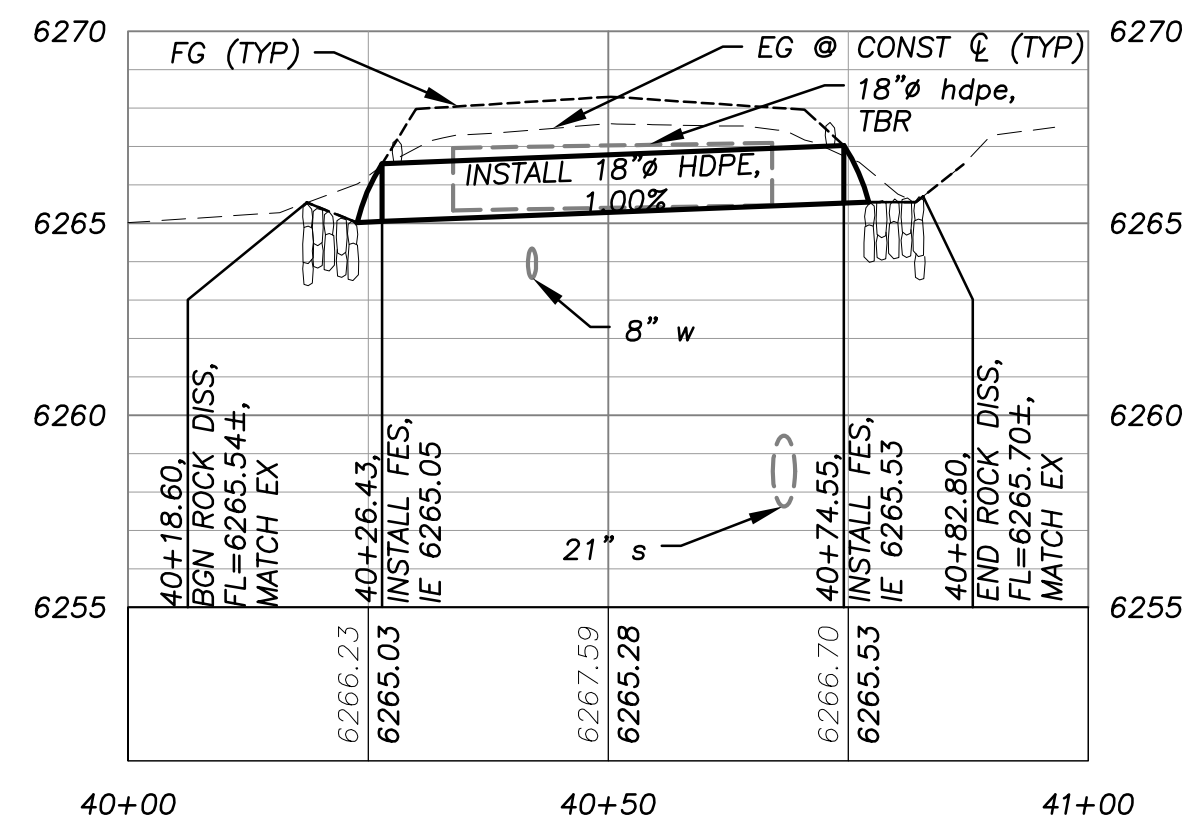
15+35.28, 72.95' LT
= LT STA 25+71.43,
END RSP, FL=6264.88±,
MATCH EX

RELOCATE BOULDERS
PER ENGINEER
IN THE FIELD

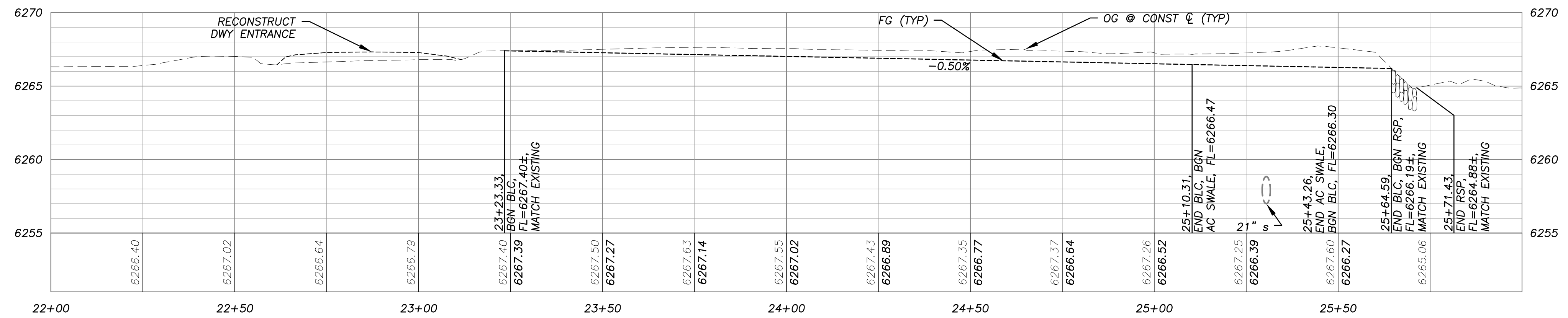


PLAN & PROFILE

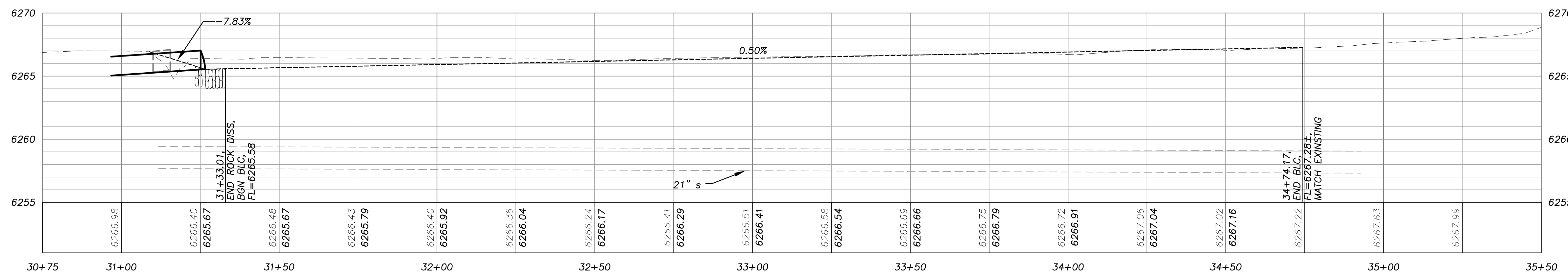
SCALE: HORIZ 1"= 20'
VERT 1"= 5'



ELKS P-SD-XING



ELKS 22 LEFT-TO AC SWALE



ELKS 22 RIGHT

FOR REDUCED PLANS ORIGINAL SCALE IS IN INCHES

REVISION	NUMBER	DATE	DESCRIPTION	BY



PREPARED UNDER THE SUPERVISION OF:
[Signature]
REGISTERED CIVIL ENGINEER
JANUARY 22, 2018
DATE:

DESIGNED: KIS
DRAWN: KIS
CHECKED: DWK
DATE: 01/2018
ROAD NUMBER: ---



COUNTY OF EL DORADO
COMMUNITY DEVELOPMENT SERVICES
DEPARTMENT OF TRANSPORTATION

2018 ELKS CLUB DRIVE
EMERGENCY ROAD REPAIR PROJECT
ELKS CLUB DRIVE STORM DRAIN AND CHANNEL
PLAN AND PROFILE

SHEET
P-2
6 of 13
CONTRACT NO.
PW 17-3191
DIP No.
78725

FOR REDUCED PLANS



PLAN
SCALE: HORIZ 1" = 60'

!! WARNING !!
THE LOCATION AND/OR ELEVATION OF EXISTING UNDERGROUND UTILITIES SHOWN ON THESE PLANS ARE ONLY APPROXIMATE. CONTRACTOR TO VERIFY LOCATION AND ELEVATION OF ALL EXISTING UNDERGROUND UTILITIES.

REVISION	NUMBER	DATE	DESCRIPTION	BY



PREPARED UNDER THE SUPERVISION OF:
[Signature]
REGISTERED CIVIL ENGINEER
DATE: **JANUARY 22, 2018**

DESIGNED: KIS
DRAWN: KIS
CHECKED: DWK
DATE: 01/2018
ROAD NUMBER: ---

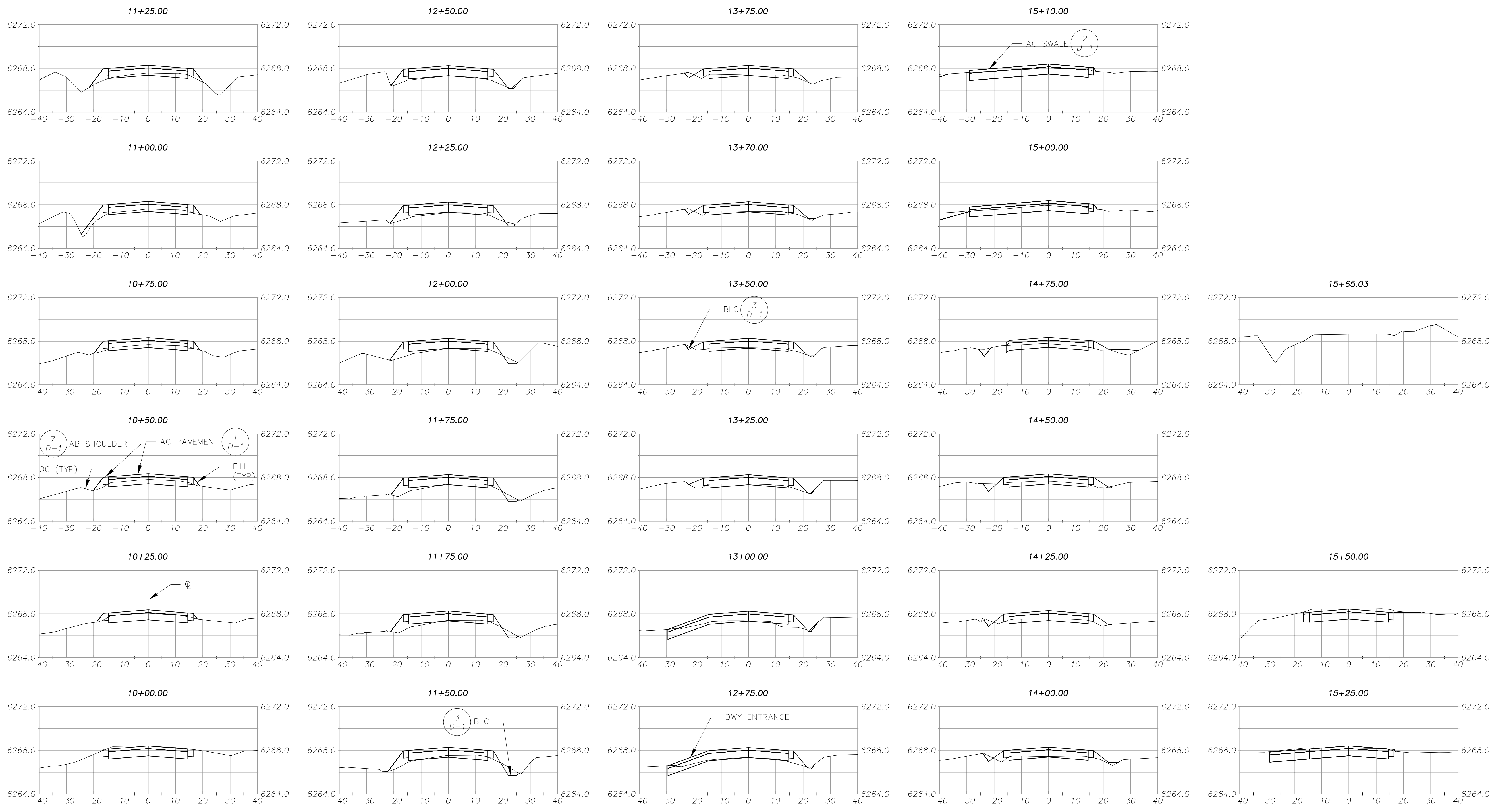


COUNTY OF EL DORADO
COMMUNITY DEVELOPMENT SERVICES
DEPARTMENT OF TRANSPORTATION

2018 ELKS CLUB DRIVE
EMERGENCY ROAD REPAIR PROJECT
TAM O SHANTER

SHEET
P-3
7 of 13
CONTRACT NO.
PW 17-31191
CIP No.
78725

Drawing name: \\caddis\at-all-engineering\civil_3d_projects\78725-elks-club-engineering\DESIGN\Plan_SECTION.dwg
 ORIGINAL SCALE IS IN INCHES
 2
 1
 0
 FOR REDUCED PLANS
 REVISION



NUMBER	DATE	DESCRIPTION	BY



PREPARED UNDER THE SUPERVISION OF:

 REGISTERED CIVIL ENGINEER
JANUARY 22, 2018
 DATE:

DESIGNED: KIS
 DRAWN: KIS
 CHECKED: DWK
 DATE: 01/2018
 ROAD NUMBER: ---

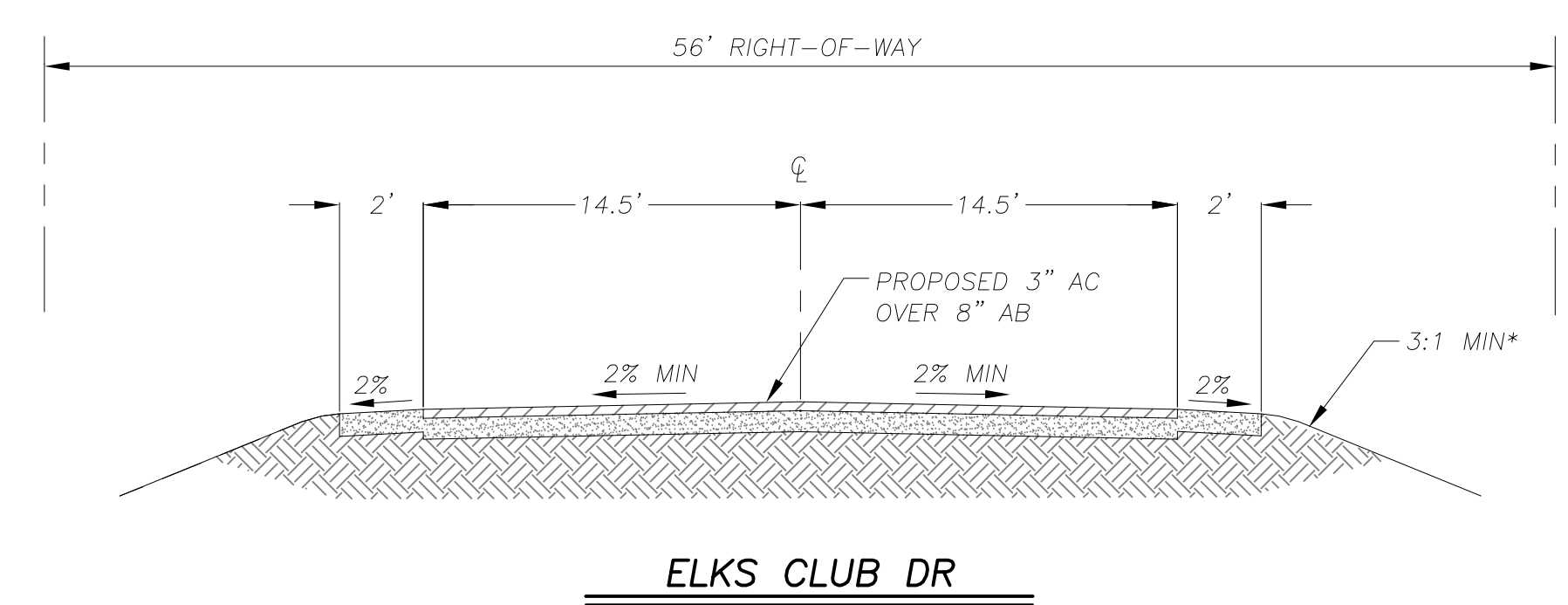


COUNTY OF EL DORADO
 COMMUNITY DEVELOPMENT SERVICES
 DEPARTMENT OF TRANSPORTATION

2018 ELKS CLUB DRIVE
 EMERGENCY ROAD REPAIR PROJECT
 CROSS SECTIONS

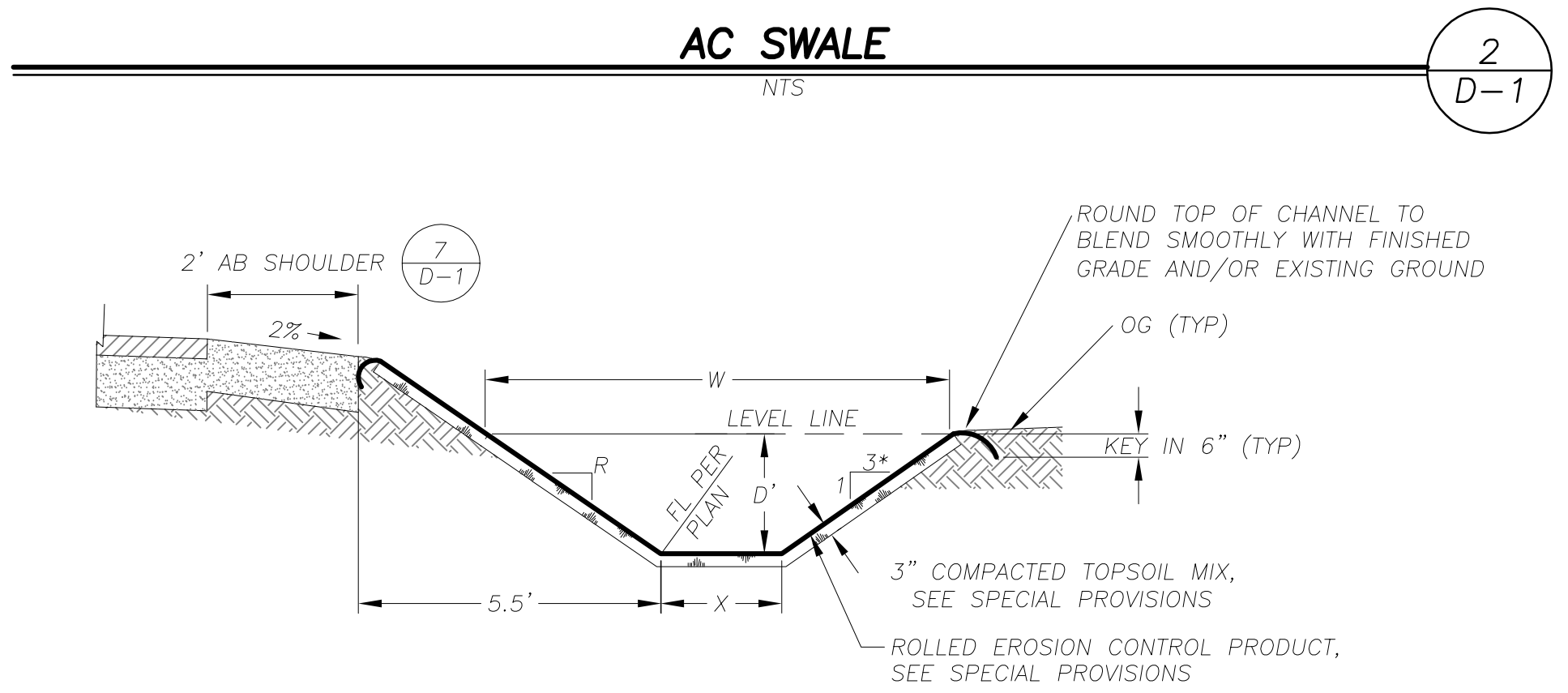
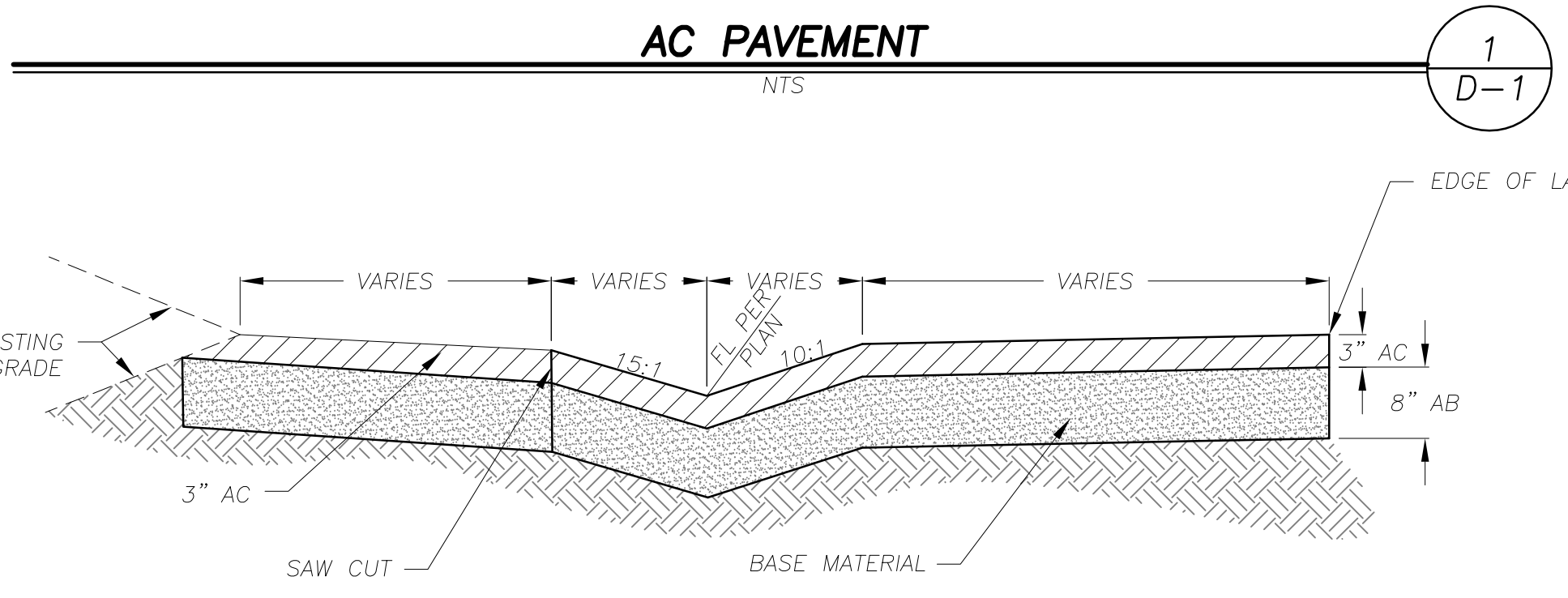
SHEET
X-1
 8 of 13
 CONTRACT NO.
PW 17-31191
 CIP No.
78725

ORIGINAL SCALE IS IN INCHES
 FOR REDUCED PLANS
 2
 1
 0
 DRAWING NAME: \cadd\st5\st5r-at-engineering\civil_3d_projects\17825-elks-engineering\PLAN\17-7 ELKS D-1 THRU D-2.dwg
 PROJECT: 17825-ELKS-ENGINEERING\PLAN\17-7 ELKS D-1 THRU D-2.dwg



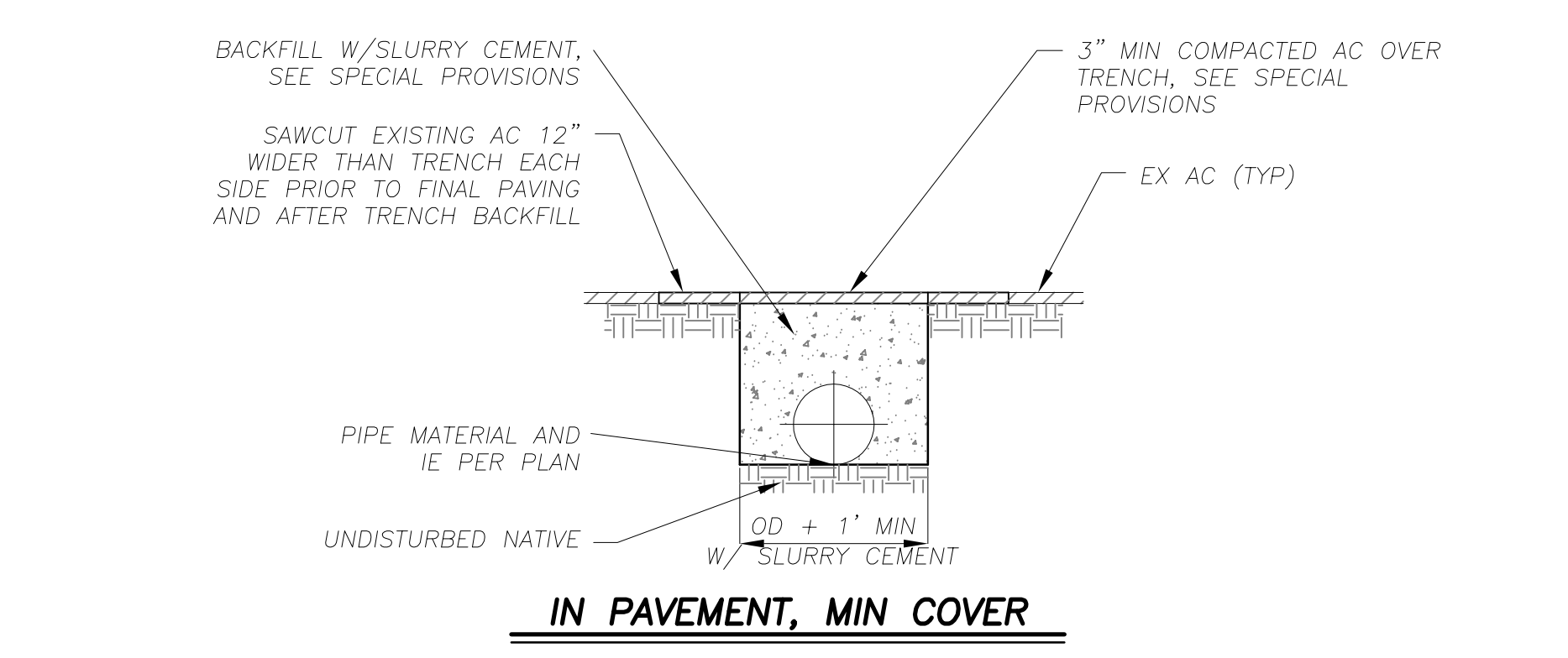
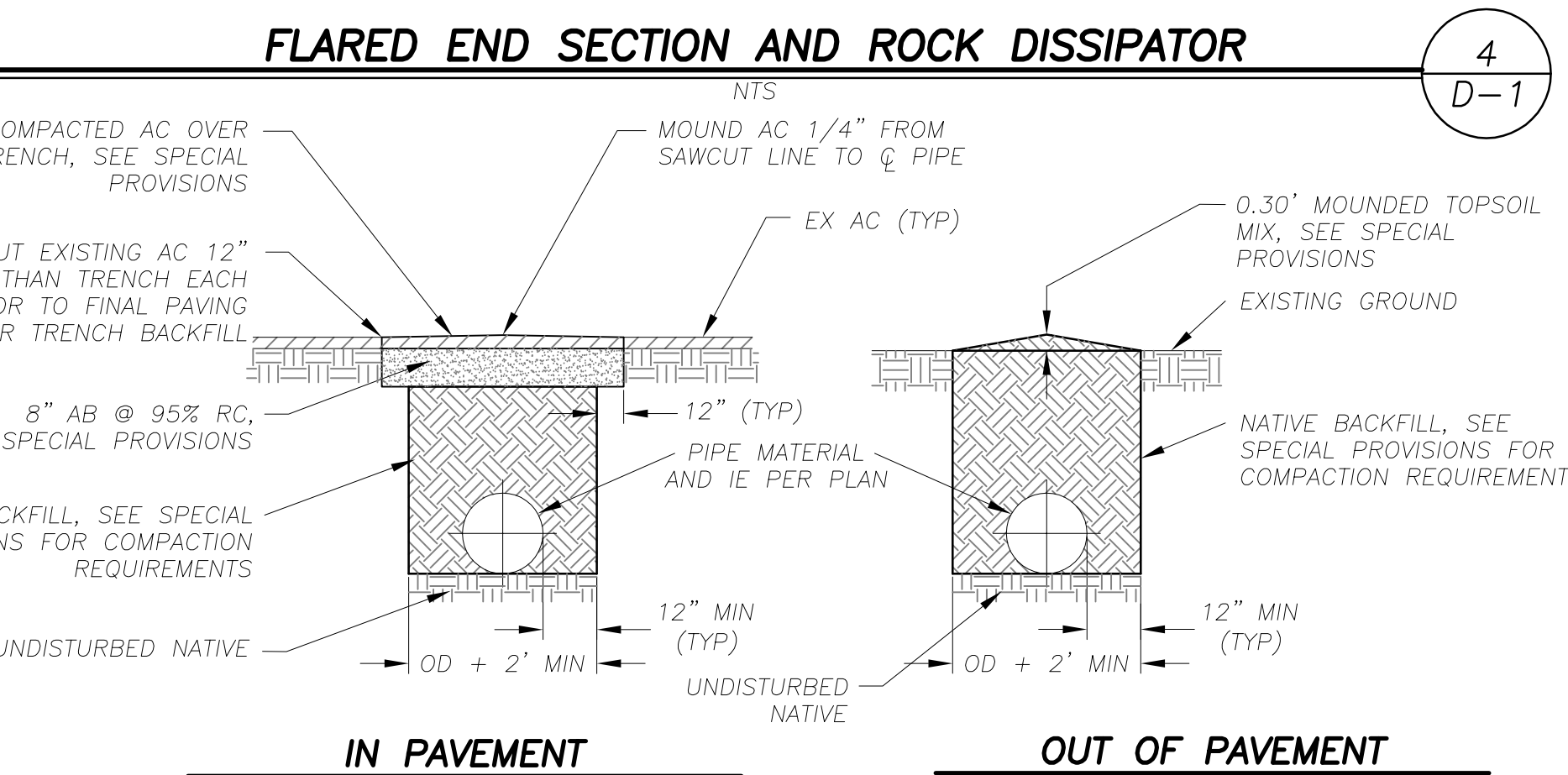
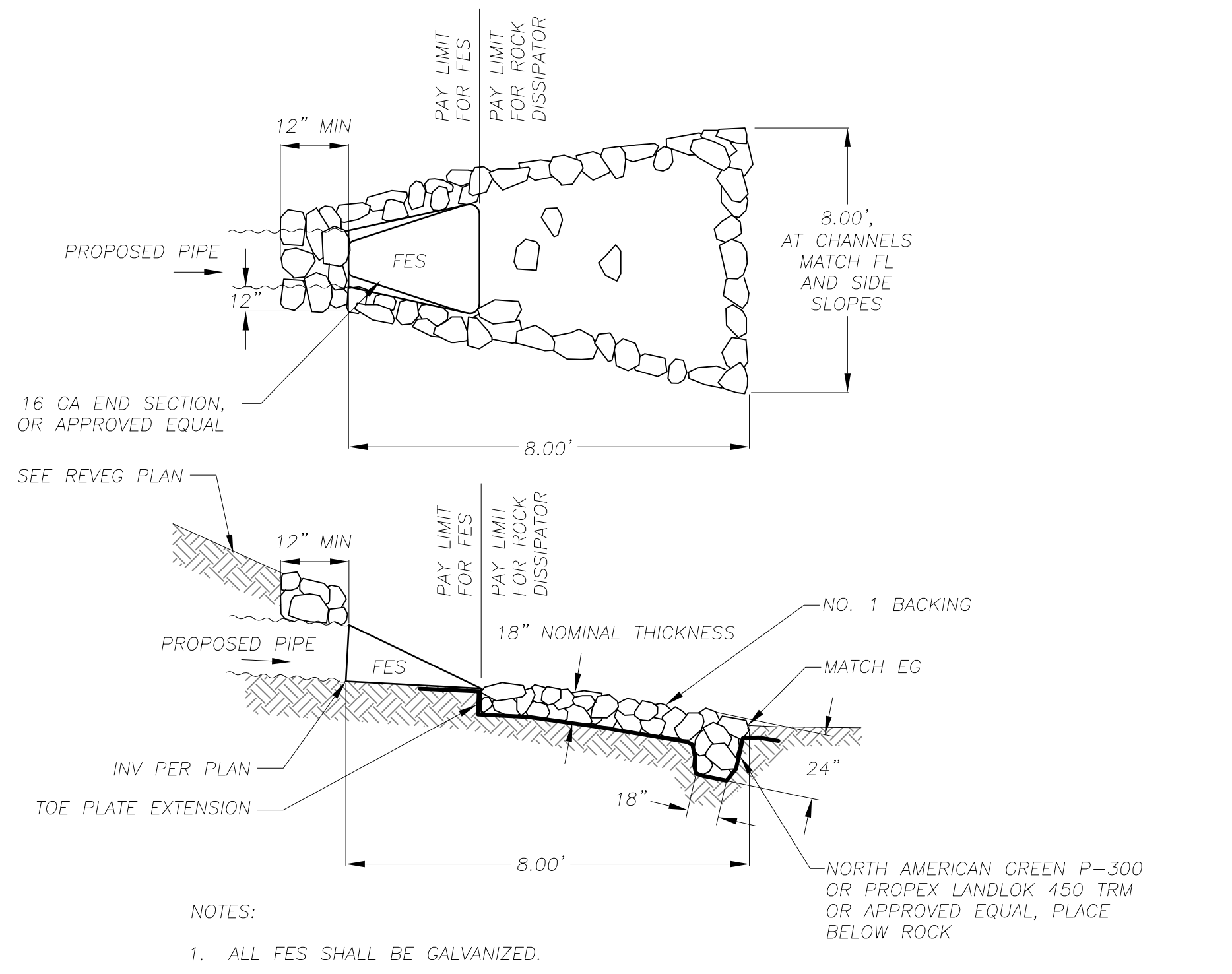
ELKS CLUB DR

NOTES:
 1. WIDTH VARIES AT DRIVEWAYS AND INTERSECTION
 2. 3:1 TIE IN EXCEPT WHERE CHANNELS ARE BEING CONSTRUCTED.

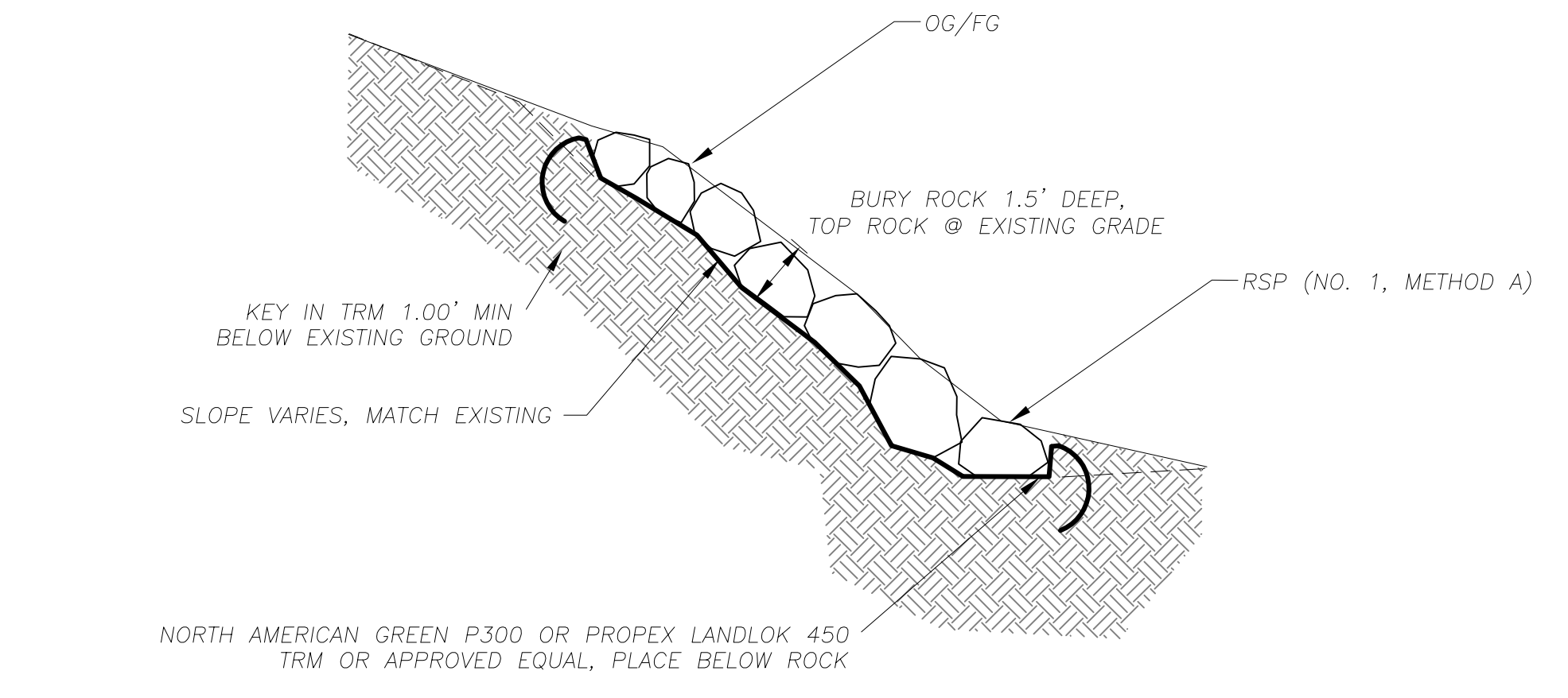


NOTES:
 1. "D" DEPICTS MINIMUM REQUIRED HEIGHT OF CHANNEL. FINISHED TOP WIDTH AND SIDE SLOPE HEIGHT MAY VARY DEPENDING ON EXISTING TERRAIN AND THE NEED TO MAINTAIN A 2' SHOULDER AT ROADWAYS. SEE PLANS SHEETS FOR GRADING LIMITS.
 2. WHERE FILL CONDITIONS EXIST TO TIE FLOWLINE INTO EXISTING GROUND, SLOPE RATIO TO BE 2000:1 (SEE CROSS SECTIONS SHEET X-1)
 3. SEE SPECIAL PROVISIONS FOR OVEREXCAVATION, TOPSOIL MIX, AND COMPACTION REQUIREMENTS.

PLAN SHEET	STATIONING	LF	BOT WIDTH, X	DEPTH, D	SLOPE RATIO, R	CY EXCAVATION
P-2	22+RT 11+30.63 TO 12+05.00	73.67	3'	VARIES	VARIES 3:1 MAX	42
P-2	22+RT 12+05.00 TO 12+50.63	45.63	2'	VARIES	VARIES 3:1 MAX	
P-2	22+RT 12+50.63 TO 14+84.13	233.50	1'	VARIES	VARIES 3:1 MAX	
P-2	13+19.30 22+LT TO 14+95.35 37.09'LT	186.98	0 (V DITCH)	VARIES	VARIES 3:1 MAX	20
P-2	15+20.26 54.20'LT TO 15+34.06 66.61'LT	13.80	0 (V DITCH)	VARIES	VARIES 3:1 MAX	4



NOTES:
 1. FOR COMPACTION REQUIREMENTS SEE SPECIAL PROVISIONS.
 2. SEE SPECIAL PROVISIONS FOR LOCATIONS WHERE PIPE TRENCH BACKFILL SHALL BE SLURRY CEMENT.



PREPARED UNDER THE SUPERVISION OF:
 [Signature]
 REGISTERED CIVIL ENGINEER
 JANUARY 22, 2018
 DATE:

DESIGNED: KIS
 DRAWN: KIS
 CHECKED: DWK
 DATE: 01/2018
 ROAD NUMBER: ---



COUNTY OF EL DORADO
 COMMUNITY DEVELOPMENT SERVICES
 DEPARTMENT OF TRANSPORTATION

2018 ELKS CLUB DRIVE
 EMERGENCY ROAD REPAIR PROJECT
 DETAIL SHEET

SHEET
 D-1
 9 of 13
 CONTRACT NO.
 PW 17-31191
 CIP No.
 78725

LEGEND

	COUNTY OR CALTRANS RIGHTS-OF-WAY OR PROPERTY LINE		TEMPORARY FENCE (TYPE ESA)
	EXISTING EDGE OF PAVEMENT		REINFORCED SILT FENCE
	LAND CAPABILITY BOUNDARY		SEDIMENT CONTROL
	10' SEZ SETBACK (IF APPLICABLE)		PROPOSED PIPE W/ FLARED END SECTION
	PROPOSED STAGING, STORAGE, OR CONC WASH		PROPOSED ROCK DISSIPATOR OR RSP
			PROPOSED BLC

NOTE:
THIS PROJECT IS LOCATED IN AN ENVIRONMENTALLY SENSITIVE AREA. YOU MUST EXERCISE UTMOST CARE TO PROTECT AND MAINTAIN EXISTING VEGETATION AND MINIMIZE SOIL COMPACTION WITHIN CONSTRUCTION AREAS.

DEFINITIONS

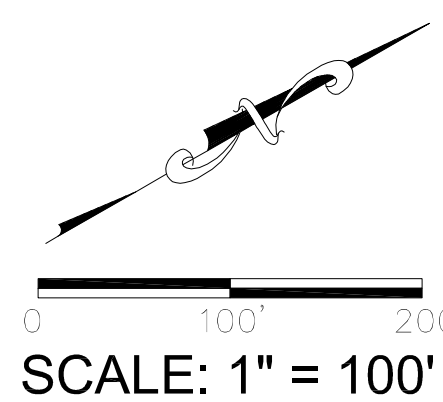
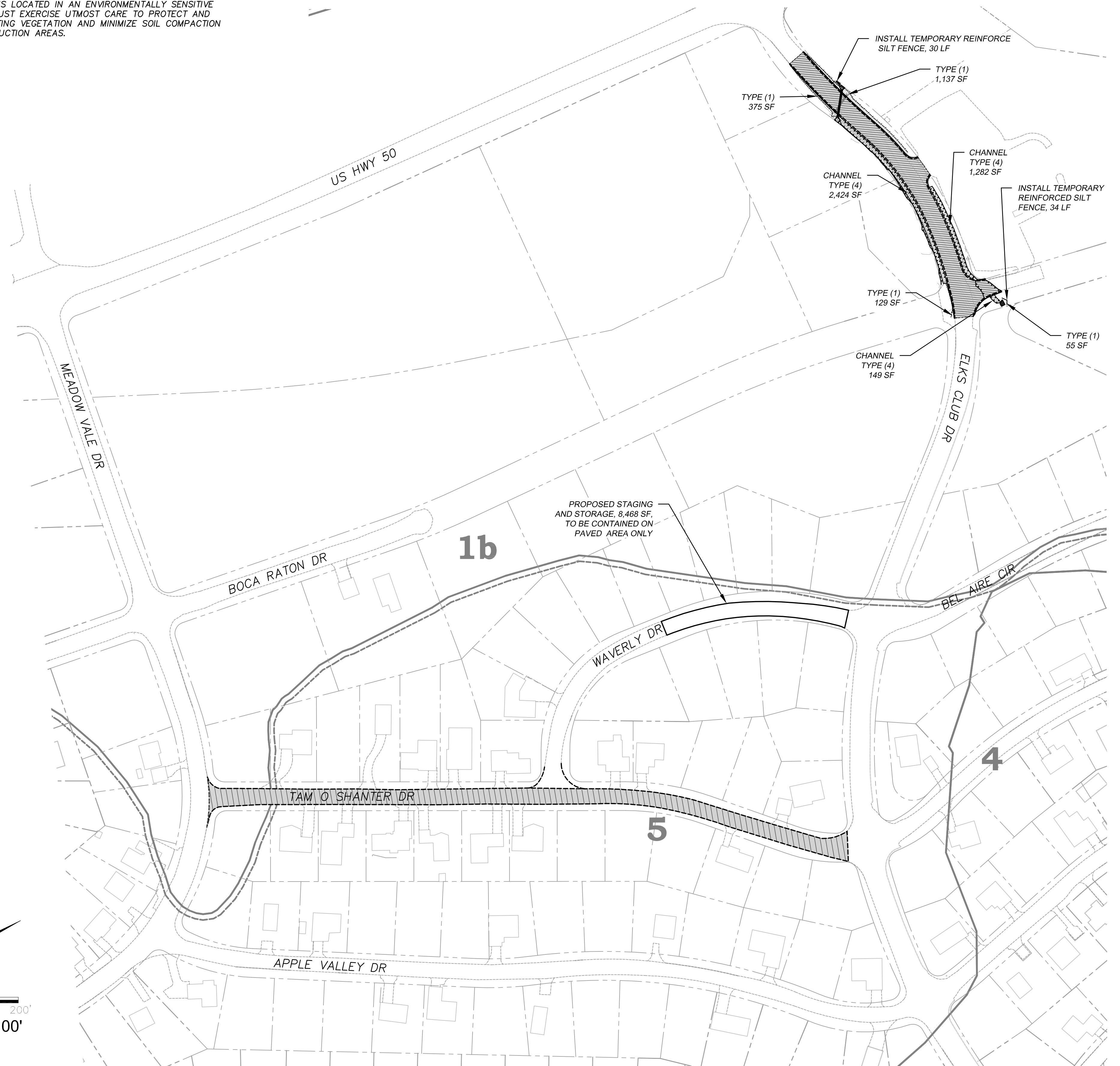
RECP FOR BLC SIDES
 MULCH - TO BE APPLIED BY HAND OR WITH BLOWER EQUIPMENT
 HUMUS - TO BE BLENDED WITH SALVAGED SOIL
 TOPSOIL MIX - A BLEND OF SOIL SALVAGED FROM EXCAVATED AREAS (3 PARTS) WITH HUMUS (1 PART)
 TACKIFIER - CONTRACTOR TO APPLY WOOD-CELLULOSE FIBER MULCH/TACKIFIER OVER AREAS THAT RECEIVE MULCH

REVEGETATION WORK LEGEND

TYPE (1) - CONTRACTOR TO PLACE 2" COMPACTED TOPSOIL MIX, CALIFORNIA CONSERVATION CORPS (CCC) TO ADD SEED, CONTRACTOR TO APPLY 1" MULCH, CONTRACTOR TO APPLY TACKIFIER. QUANTITY=1,696 SF TOTAL.
 TYPE (2) - N/A
 TYPE (3) - N/A
 TYPE (4) - CONTRACTOR TO PLACE 3" COMPACTED TOPSOIL MIX ON BLC SIDES, CCC TO PLACE SEED, CONTRACTOR TO APPLY TACKIFIER. QUANTITY=4,404 SF TOTAL.
 TYPE (5) - N/A
 TYPE (6) - N/A
 TYPE (7) - N/A

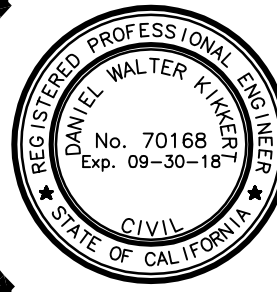
NOTES

1. REVEGETATION TYPE (1) FOR AREAS ADJACENT TO ROAD SHOULDERING, PIPE INSTALLATION, DISTURBED AREAS ADJACENT TO IMPROVEMENTS, AND GRADE TO DRAIN LOCATIONS, UNLESS NOTED OTHERWISE.
2. REVEGETATION TYPE (4) IS ASSOCIATED WITH THE BLANKET LINED CHANNEL, AND THE SLOPES ABOVE THE BLANKET LINED CHANNEL.
3. MULCH WILL NOT BE APPLIED TO AREAS WITHIN CHANNELS.
4. ALL REVEGETATION AREAS DESCRIBED ABOVE WILL BE IRRIGATED WITH A WATER TRUCK BY THE COUNTY FOR TWO YEARS FOLLOWING INSTALLATION TO ENSURE OPTIMUM VEGETATION SURVIVAL.
5. SEE SPECIAL PROVISIONS FOR LOCATIONS WHERE SCARIFYING IS REQUIRED PRIOR TO REVEGETATION TREATMENT.



FOR REDUCED PLANS ORIGINAL SCALE IS IN INCHES

REVISION	NUMBER	DATE	DESCRIPTION	BY



PREPARED UNDER THE SUPERVISION OF:

 REGISTERED CIVIL ENGINEER
 DATE: **JANUARY 22, 2018**

DESIGNED: KIS
 DRAWN: KIS
 CHECKED: DWK
 DATE: 01/2018
 ROAD NUMBER: ---



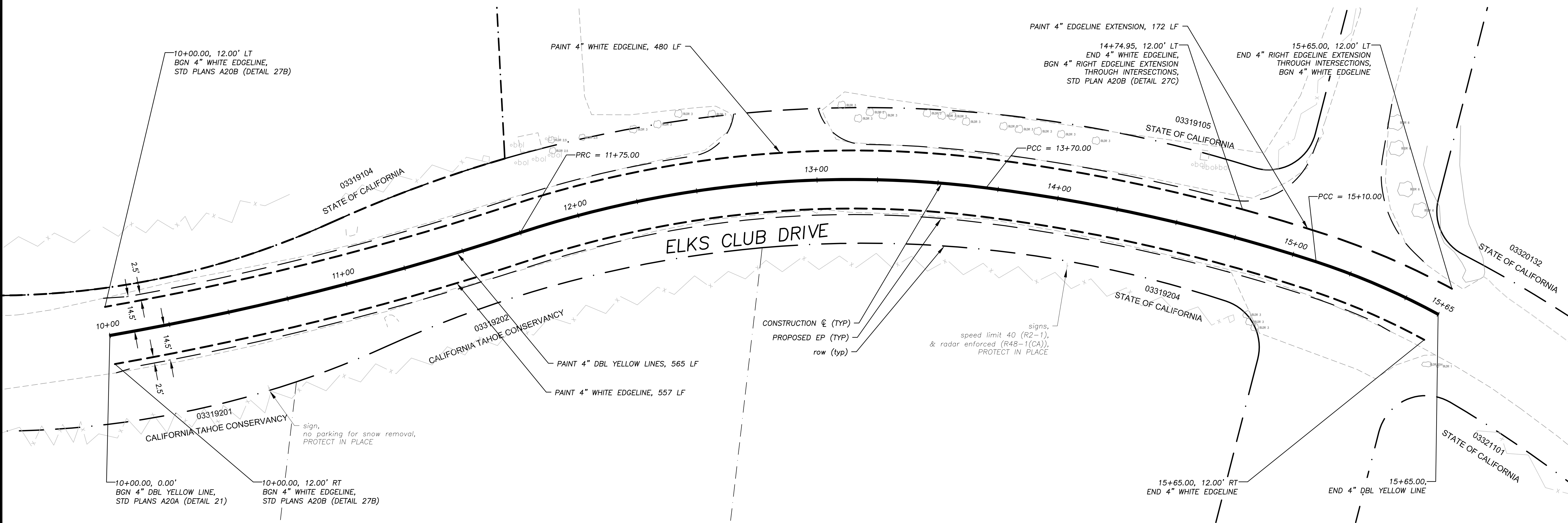
COUNTY OF EL DORADO
 COMMUNITY DEVELOPMENT SERVICES
 TRANSPORTATION DEPARTMENT

2018 ELKS CLUB DRIVE
 EMERGENCY ROAD REPAIR PROJECT
 EROSION CONTROL AND REVEGETATION PLAN

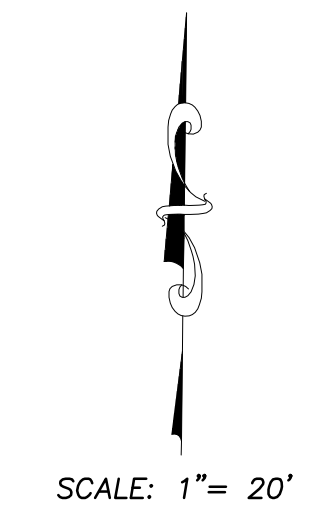
SHEET
EC&R-1
 10 of 13
 CONTRACT NO.
PW 17-31191
 D/P No.
78725

LEGEND

- EXISTING SIGN
- 4" WHITE EDGELINE PER CALTRANS STD PLAN A20B
- 4" WHITE EDGELINE PER CALTRANS STD PLAN A20B
- NO PASSING ZONES—TWO DIRECTION PER CALTRANS STD PLAN DETAIL 21 A20A



FOR REDUCED PLANS ORIGINAL SCALE IS IN INCHES 2 1 0



REVISION	NUMBER	DATE	DESCRIPTION	BY



PREPARED UNDER THE SUPERVISION OF:

 REGISTERED CIVIL ENGINEER
JANUARY 22, 2018
 DATE:

DESIGNED: KIS
 DRAWN: KIS
 CHECKED: DWK
 DATE: 01/2018
 ROAD NUMBER: ---



COUNTY OF EL DORADO
COMMUNITY DEVELOPMENT SERVICES
DEPARTMENT OF TRANSPORTATION

2018 ELKS CLUB DRIVE
EMERGENCY ROAD REPAIR PROJECT
STRIPING SHEET

SHEET
SS-1
 11 of 13
 CONTRACT NO.
PW 17-31191
 CIP No.
78725

FOR REDUCED PLANS ORIGINAL SCALE IS IN INCHES 2 1 0

REVISION	NUMBER	DATE	DESCRIPTION	BY

LEGEND

- PROPOSED STAGING AREA WITH SF
- APPROXIMATE SIGN LOCATION
- G20-2 "END ROAD WORK" SIGN
- W20-1 "ROAD WORK AHEAD" SIGN
- W20-4 "ONE LANE ROAD XXX FT" SIGN
- W3-4 "BE PREPARED TO STOP" SIGN

NOTES:

1. THIS PLAN HAS BEEN PREPARED AS A GUIDE FOR YOU IN PREPARATION OF A COMPLETE TRAFFIC CONTROL PLAN AND TO AID IN YOUR PLANNING FOR STAGING/STORAGE OF MATERIALS AND EQUIPMENT. YOUR TRAFFIC CONTROL PLAN WILL INCLUDE DETAILED CONTROLS INCLUDING FLAGGERS, LANE CLOSURES, AND SIGNS FOR ALL ITEMS OF ROAD WORK WHICH WILL REQUIRE ALTERATION OF EXISTING TRAFFIC PATTERNS. THE LEGEND SHOWS THE LIST OF SIGNS TO BE REQUIRED AS A MINIMUM.
2. YOUR TRAFFIC CONTROL PLAN WILL ADDRESS EACH PHASE OF CONSTRUCTION (e.g. PIPE PLACEMENT, STRUCTURES ADJACENT TO AND/OR AFFECTING THE ROADWAY, ETC.) AND WILL CONFORM TO PART 6 OF THE CALIFORNIA MUTCD ENTITLED "TEMPORARY TRAFFIC CONTROL" AND THE SPECIAL PROVISIONS. YOUR TRAFFIC CONTROL PLAN WILL ALSO INCLUDE ALL SIGNING REQUIRED AT INTERSECTING STREETS WITHIN THE AREA THAT WILL REQUIRE TRAFFIC CONTROL.
3. SINGLE LANE CLOSURES WILL BE ALLOWED FOR THE RECONSTRUCTION OF TAM O SHANTER. AT ALL OTHER TIMES, TWO LANES OF TRAFFIC WILL BE MAINTAINED.
4. AT THE END OF EACH WORK DAY A MINIMUM OF TWO 10 FOOT LANES WILL BE OPENED TO PUBLIC TRAFFIC EXCEPT FOR ELKS CLUB DR. DURING PERMANENT CLOSURE PERIOD. NO LANE CLOSURE WILL PREVENT RESIDENTS FROM ACCESS TO THEIR PROPERTY.
5. WHEN LANE CLOSURES ARE REMOVED AND ROADS ARE OPEN TO PUBLIC TRAFFIC, ALL DRIVEWAYS WITHIN THE WORK AREA WILL BE ACCESSIBLE AND OPERATIONAL.
6. YOU WILL NOT EXCAVATE MORE THAN CAN BE INSTALLED AND BACKFILLED IN ONE WORKING DAY.
7. YOUR TRAFFIC CONTROL PLAN WILL INCLUDE SIGNAGE ON HIGHWAY 50 FOR TRAFFIC CONTROL RELATED TO TRUCKS ENTERING THE ROADWAY AREA.
8. YOUR ATTENTION IS DIRECTED TO THE SWPPP/WPCP, TEMPORARY EROSION CONTROL SHEETS, REVEGETATION PLAN SHEET, AND THE SPECIAL PROVISIONS REGARDING TEMPORARY EROSION CONTROL REQUIREMENTS FOR STAGING AREAS.
9. STAGING AREAS SHOWN ARE FOR THE TEMPORARY STORAGE OF CONSTRUCTION MATERIALS AND EQUIPMENT WHICH ARE TO BE USED ON THIS PROJECT.
10. TRAFFIC SHALL BE DIVERTED TO MEADOWVALE DR AND TAM O SHANTER DR DURING ELKS CLUB DR CONSTRUCTION. SIGNAGE FOR DETOUR PLAN WILL BE PER SHEET DE-1, DETOUR PLAN.



SCALE: 1" = 100'



PREPARED UNDER THE SUPERVISION OF:

 REGISTERED CIVIL ENGINEER
 DATE: **JANUARY 22, 2018**

DESIGNED: KIS
 DRAWN: KIS
 CHECKED: DWK
 DATE: 01/2018
 ROAD NUMBER: ---



COUNTY OF EL DORADO
 COMMUNITY DEVELOPMENT SERVICES
 DEPARTMENT OF TRANSPORTATION

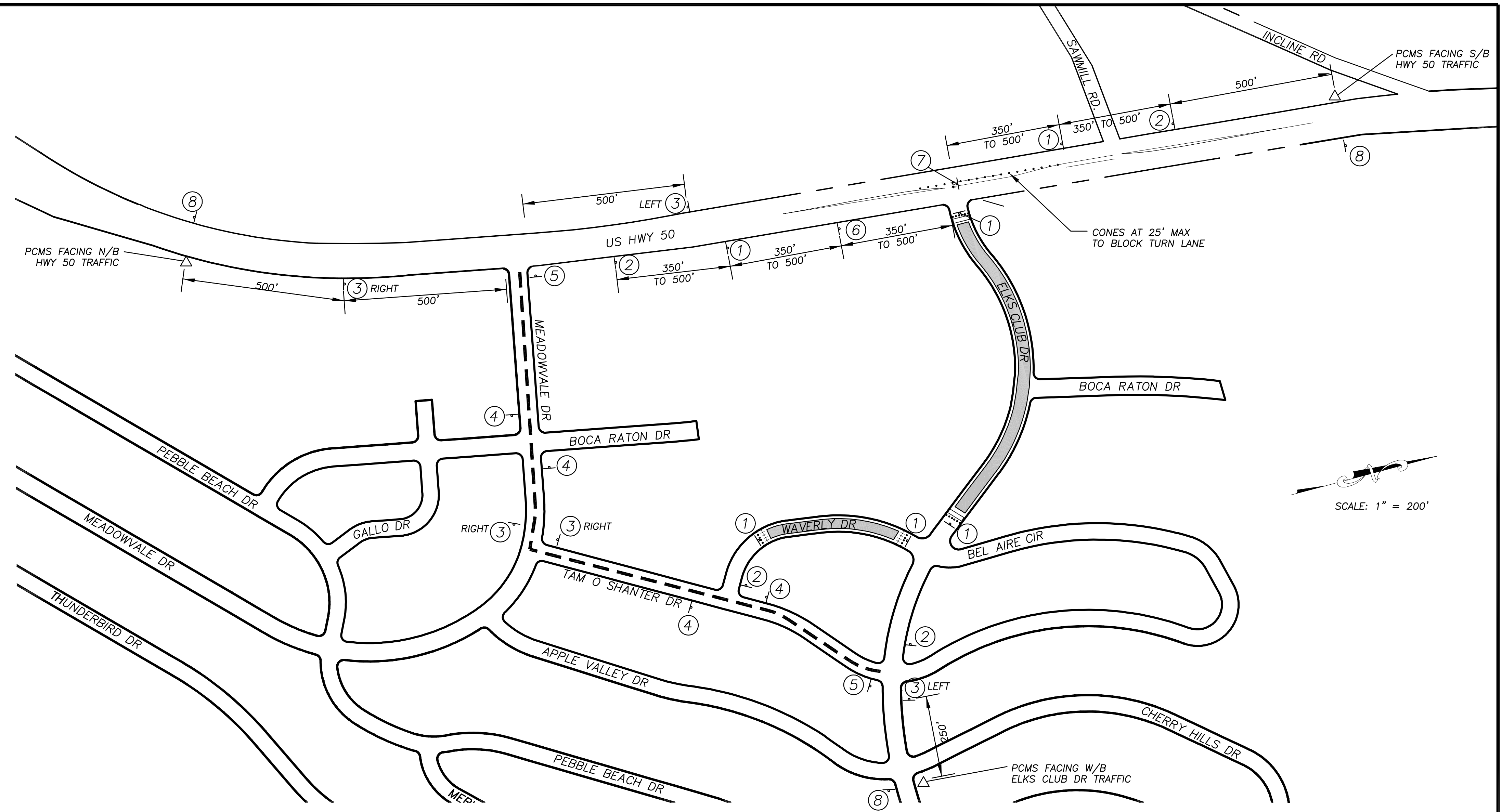
2018 ELKS CLUB DRIVE
 EMERGENCY ROAD REPAIR PROJECT
 TRAFFIC CONTROL PLAN

SHEET
TC-1
 12 of 13
 CONTRACT NO.
PW 17-31191
 CIP No.
78725

NOTES:

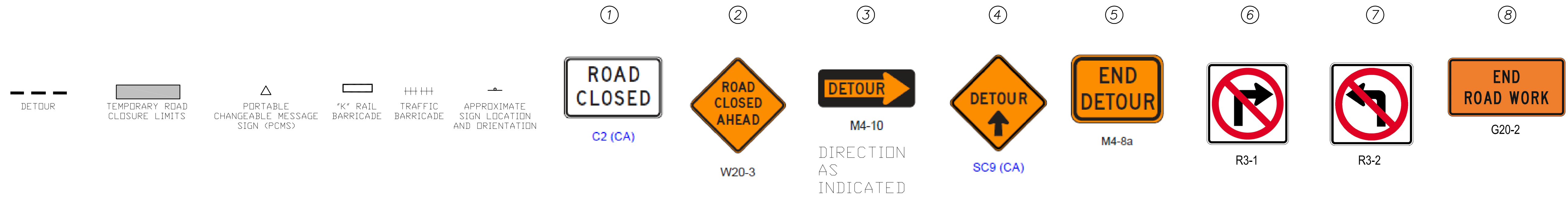
1. THIS SHEET IS ACCURATE FOR DETOUR LAYOUT ONLY.
2. SIGN LOCATIONS SHOWN ARE APPROXIMATE. EXACT LOCATIONS TO BE DETERMINED BY THE ENGINEER.
3. CONSTRUCTION AREA SIGNS ARE REQUIRED IN ADDITION TO THESE DETOUR SIGNS SHOWN.
4. PCMS SIGNS ARE REQUIRED 7-DAYS PRIOR TO, AND DURING ANY ROAD CLOSURE. MESSAGE AS SHOWN OR AS DIRECTED BY THE ENGINEER.

PORTABLE CHANGEABLE MESSAGE SIGN (PCMS) TABLE			
PRIOR TO CONSTRUCTION			
LOCATION	FIRST FLASH	SECOND FLASH	THIRD FLASH
FACING N/B HWY 50 TRAFFIC	ELKS CLUB DR CLOSED	DATE TBD TO DATE TBD	
FACING S/B HWY 50 TRAFFIC	ELKS CLUB DR CLOSED	DATE TBD TO DATE TBD	
FACING W/B ELKS CLUB DR TRAFFIC	ELKS CLUB DR CLOSED	DATE TBD TO DATE TBD	
DURING CONSTRUCTION			
FACING N/B HWY 50 TRAFFIC	ELKS CLUB DR CLOSED	DETOUR MEADOWVALE	TO TAM O SHANTER
FACING S/B HWY 50 TRAFFIC	ELKS CLUB DR CLOSED	DETOUR MEADOWVALE	TO TAM O SHANTER
FACING W/B ELKS CLUB DR TRAFFIC	ELKS CLUB DR CLOSED	DETOUR TAM O SHANTER	TO MEADOWVALE



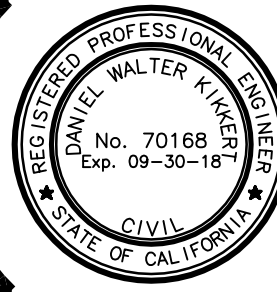
**TRAFFIC CONTROL FOR ROAD CLOSURE
ELKS CLUB DRIVE AND HIGHWAY 50 INTERSECTION**

NTS



FOR REDUCED PLANS ORIGINAL SCALE IS IN INCHES

REVISION	NUMBER	DATE	DESCRIPTION	BY



PREPARED UNDER THE SUPERVISION OF:

 REGISTERED CIVIL ENGINEER
 DATE: **JANUARY 22, 2018**

DESIGNED: KIS DRAWN: KIS
 CHECKED: DWK DATE: 01/2018
 ROAD NUMBER: ---



COUNTY OF EL DORADO
 COMMUNITY DEVELOPMENT SERVICES
 DEPARTMENT OF TRANSPORTATION

2018 ELKS CLUB DRIVE
 EMERGENCY ROAD REPAIR PROJECT
 DETOUR PLAN

SHEET
DE-1
 13 of 13
 CONTRACT NO.
PW 17-31191
 CIP No.
78725