



RESOLUTION of INTENTION NO. 179-2010

OF THE BOARD OF SUPERVISORS OF THE COUNTY OF EL DORADO

WHEREAS, the unincorporated communities of Diamond Springs and El Dorado are located within a Community Region of the 2004 General Plan; and

WHEREAS, the adopted 2004 General Plan designations for this Community Region generally reflect the land use designations and zoning from the 1969 General Plan, the Diamond Springs/El Dorado Area Plan (1979), and the 1996 General Plan; and

WHEREAS, General Plan Goal 2.4 "Existing Community Identity," states "Maintain and enhance the character of existing rural and urban communities, emphasizing both the natural setting and built design elements which contribute to the quality of life, economic health, and community pride of County residents;" and

WHEREAS, General Plan Policy 2.4.1.1 allows for "historic design control combining zone districts" to be applied to commercial and multiple family zoning districts; and

WHEREAS, the County of El Dorado has adopted Historic Design Guidelines that protect, enhance and promote the use of areas and buildings determined to be of special historical significance, including specific places, sites, buildings and structures which have special historical interest and should receive the benefit of special regulation for protection and preservation as determined by the Board of Supervisors; and

WHEREAS, the County is in the process of updating its Zoning Ordinance and Zone District Maps; and

WHEREAS, the Board of Supervisors has appointed the Diamond Springs and El Dorado Community Advisory Committee (CAC) to steward certain aspects of development including elements of implementation of the 2004 General Plan and Zoning Ordinance; and

WHEREAS, the CAC has determined a need for historic design control combining zone districts for the historic town sites of El Dorado, Diamond Springs, and the local roadway corridors; and

WHEREAS, on October 21, 2010, the Committee adopted Resolution 2010.01, requesting the Board of Supervisors begin the process of adopting a historic design control zone district as allowed in the 2004 General Plan; and


WHEREAS, in accordance with Section 17.10.010 B and Board Policy J-3, a Zoning Ordinance amendment may be initiated by Board of Supervisors Resolution; therefore

NOW, THEREFORE, BE IT RESOLVED that the County of El Dorado Board of Supervisors authorizes the Development Services Department to process the request of the Diamond Springs and El Dorado Community Advisory Committee to prepare a historic design control combining zone district using the historic town sites of El Dorado, Diamond Springs and the local roadways, as illustrated in the attached map, as a guide for final boundaries that can be found consistent with the goals and policies of the 2004 General Plan. Be it further resolved that final proposed boundaries shall be established by an action of the Board of Supervisors following public and environmental review and recommendations from the Planning Commission.

PASSED AND ADOPTED by the Board of Supervisors of the County of El Dorado at a regular meeting of said Board, held the 7 day of December, 2010 by the following vote of said Board:

Attest:
Suzanne Allen de Sanchez
Clerk of the Board of Supervisors

Ayes: Sweeney, Briggs, Nutting, Knight, Santiago
Noes: none
Absent: none

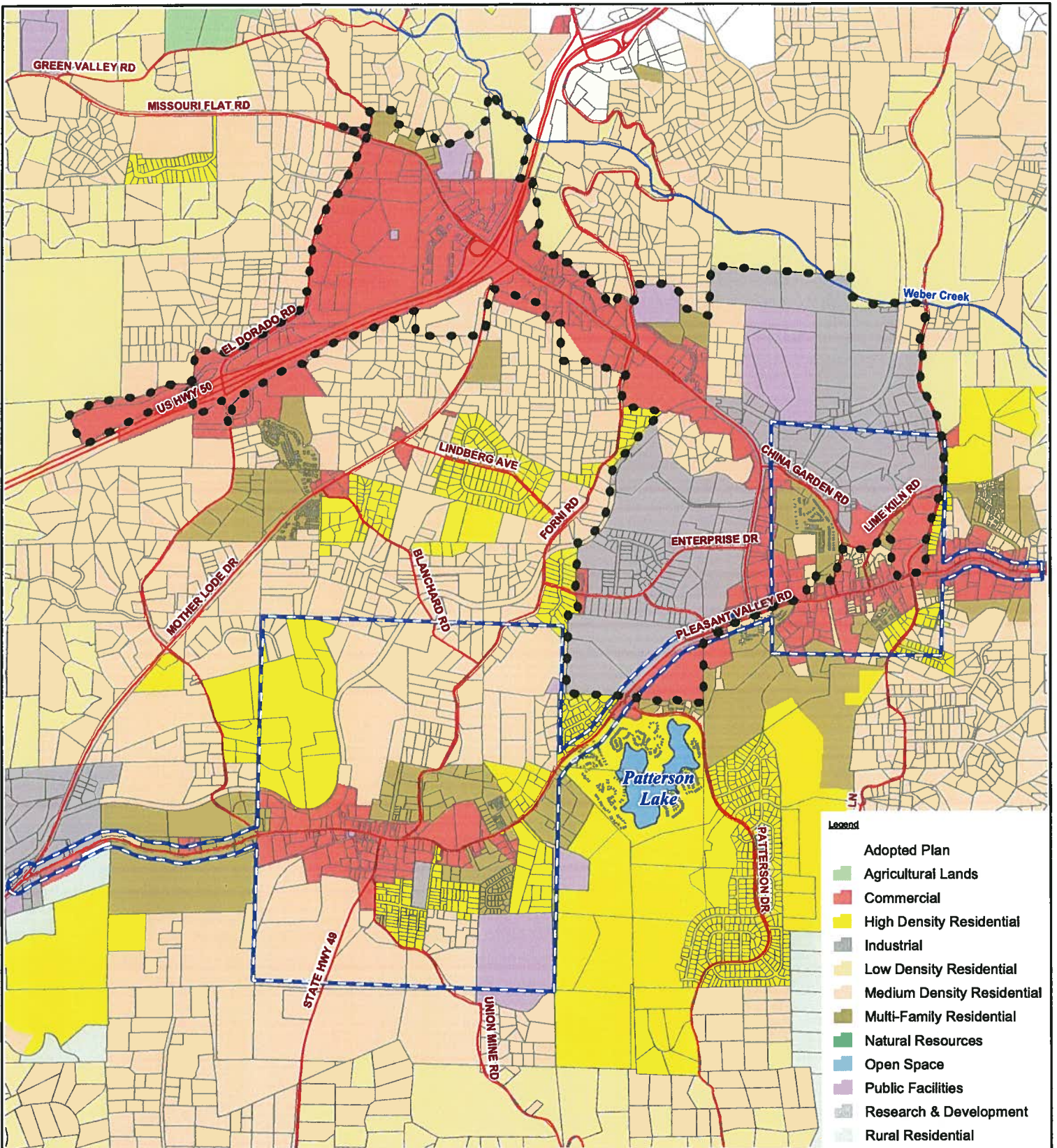
By: 
Deputy Clerk


Chair, Board of Supervisors
Norma Santiago

I CERTIFY THAT:
THE FOREGOING INSTRUMENT IS A CORRECT COPY OF THE ORIGINAL ON FILE IN THIS OFFICE.

Attest: Suzanne Allen de Sanchez, Clerk of the Board of Supervisors of the County of El Dorado, State of California.

By: _____ Date: _____
Deputy Clerk



- Legend**
- Adopted Plan
 - Agricultural Lands
 - Commercial
 - High Density Residential
 - Industrial
 - Low Density Residential
 - Medium Density Residential
 - Multi-Family Residential
 - Natural Resources
 - Open Space
 - Public Facilities
 - Research & Development
 - Rural Residential
 - Tourist Recreational
 - MC & FP Boundary
 - ED-DS Historical Boundary
 - Parcel Base
 - Major Roads
 - Rivers & Creeks

DISCLAIMER:
 THIS DEPICTION WAS COMPILED FROM UNVERIFIED PUBLIC AND PRIVATE SOURCES AND IS ILLUSTRATIVE ONLY. NO REPRESENTATION IS MADE AS TO ACCURACY OF THIS INFORMATION. PARCEL BOUNDARIES ARE PARTICULARLY UNRELIABLE. USERS MAKE USE OF THIS DEPICTION AT THEIR OWN RISK.

NOTES:
 LAYER INFORMATION MAY COVER ADDITIONAL AREAS OUTSIDE OF THE DISPLAYED AREA.

PREPARED AT THE REQUEST OF: Development Services, DATE: 11/18/2010

MAP PREPARED BY: Frank Bruyn, DATE: 11/18/2010

G.I.S. PROJECT ID: 5632, RELATED REPORT: na

EL DORADO COUNTY SURVEYOR/G.I.S. DIVISION
 PHONE (530) 621-6511 FAX (530) 626-8731



LAND USE
El Dorado / Diamond Springs Area
 County of El Dorado
 State of California



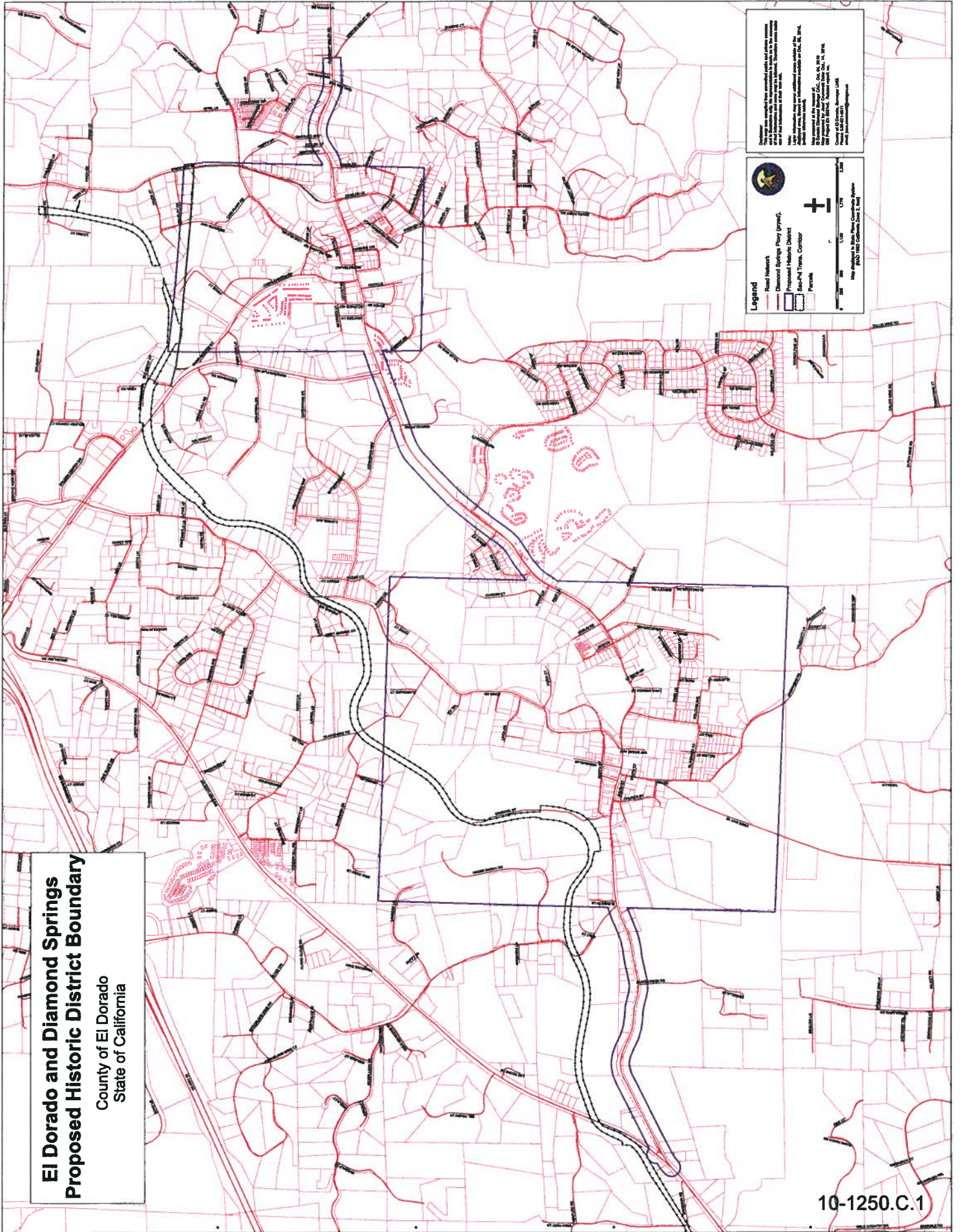
10-1250.B.1

0 0.25 0.5
 Mile

Map displayed in State Plane Coordinate System
 (NAD 1983 California Zone 2, feet)

El Dorado and Diamond Springs Proposed Historic District Boundary

County of El Dorado
State of California



This map was prepared for the County of El Dorado, California, by the County Engineer, under the authority of the Board of Supervisors. The map is a true and correct copy of the original map as shown to the County Engineer. The map is a true and correct copy of the original map as shown to the County Engineer. The map is a true and correct copy of the original map as shown to the County Engineer.

Legend

- Road Network
- Diamond Springs Place (green)
- Proposed Historic District
- Street-Only Transit Corridor
- Parade

Scale: 0 300 600 900 1,200 Feet

North Arrow