

RECEIVED  
BOARD OF SUPERVISORS  
EL DORADO COUNTY  
10:58 am, Nov 08, 2010

# 2

**LATE DISTRIBUTION**  
Date 10:58 am, Nov 08, 2010

# El Dorado County

## Department of Transportation

### Facilities Engineering Division Master Plan Presentation

November 8, 2010



# Facilities Engineering

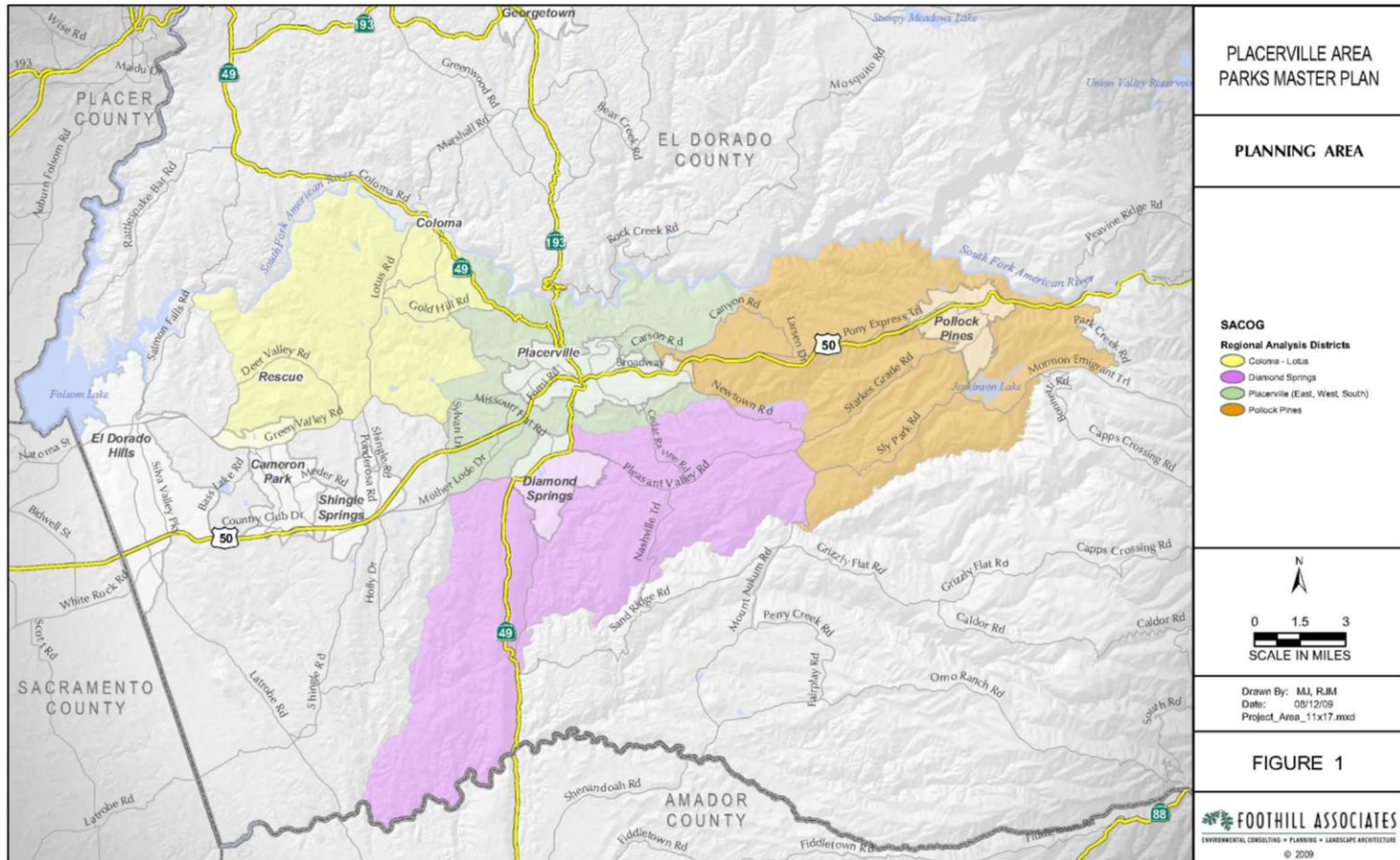
## Countywide Parks and Trails Master Plan

- Purpose: Guiding Document for Parks and Trails
  - Needs – demographics / facilities / locations / tie to existing
  - Priorities
  - Costs and Funding
  
- Progress:
  - Existing scope – through data gathering, started interviews, held successful kick-off meeting
  - Ready to start Public Input Process = Amendment
  - Build from completed Plans
    - Placerville Area Parks and Recreation Master Plan
    - Previous work at specific sites – ex. Chili Bar Conceptual Master Plan

# Facilities Engineering

## Countywide Parks and Trails Master Plan

### ■ Placerville Area Parks and Recreation Master Plan:





# Facilities Engineering

## Countywide Parks and Trails Master Plan

- Amendment: Public Input – Community Plan
  - Meetings
  - Regional Workshops
  - Surveys
  - Advisory Committee – central stakeholders
  
- Issues:
  - Cost = consultant and staff
  - Schedule

# Facilities Engineering

## Countywide Parks and Trails Master Plan

### ■ Master Plan and Environmental Document Schedule:

El Dorado County Parks and Trails Master Plan and CEQA Documentation Project Schedule (rev. May 21, 2010)

Task	Description	Task Completed	2010						2011								
			Jul	Aug	Sep	Oct	Nov	Dec	Jan	Feb	Mar	Apr	May	Jun	Jul	Aug	Sep
<b>Parks and Trails Master Plan</b>																	
<b>Task 1: Project Startup and Management</b>																	
1.1	Project Startup Meeting	✓															
1.2	County Coordination																
1.3	Project Management																
<b>Task 2: Preliminary Planning</b>																	
2.1	Review Existing Planning Information																
2.2	Population and Demographic Analysis																
2.3	Parks and Trails Inventory																
2.4	Establish Existing Levels of Service																
2.5	Existing Operations and Maintenance																
<b>Task 3: Goals, Policies, and Standards Development</b>																	
3.1	Goals and Policies																
3.2	Rec. Commission & Trails Committee Mtg	✓															
3.3	Proposed Level of Service Standard																
3.4	Facility Planning and Design Standards																
<b>Task 4: Community Input</b>																	
4.1	BOS, Rec Commission, Stakeholder Interviews																
4.2	Community Workshops																
4.3	Trail Users Workshop																
4.4	Ad Hoc Advisory Group																
4.5	Project Web Page																
4.6	Phone Survey																
4.7	Written Survey																
<b>Task 5: Public Presentation #1</b>																	
5.1	Needs Analysis																
5.2	Public Presentation #1																
<b>Task 6: Implementation Strategies and Recommendations</b>																	
6.1	Facilities and Operations Recommendations																
6.2	Land Development Process Recommendations																
6.3	Financing Plan																
6.4	Future Improvement Feasibility Criteria																
<b>Task 7: Public Presentation #2</b>																	
7.1	Public Presentation #2																
<b>Task 8: Parks and Trails Master Plan Preparation</b>																	
8.1a	Administrative Draft Plan Preparation																
8.1b	County Staff Review																
8.1b	Screencheck Draft																
8.2	Draft Final Plan Preparation																
<b>Task 9: Public Presentation #3</b>																	
9.1	Public Presentation #3																
<b>Task 10: Final Parks and Trails Master Plan</b>																	
10.1	Final Parks and Trails Master Plan																
<b>CEQA Environmental Document</b>																	
<b>Task 11: Project Management, Meetings &amp; Public Hearing</b>																	
11.1	Prepare Admin Draft IS/MND																
11.2	Prepare Admin Draft IS/MND																
11.3	Revise Admin Draft IS/MND; Screencheck IS/MND																
11.4	Revise Admin Draft IS/MND; Screencheck IS/MND																
11.5	Revise Admin Draft IS/MND; Screencheck IS/MND																
11.6	Revise Admin Draft IS/MND; Screencheck IS/MND																
11.7	Revise Admin Draft IS/MND; Screencheck IS/MND																
11.8	Revise Admin Draft IS/MND; Screencheck IS/MND																
11.9	Revise Admin Draft IS/MND; Screencheck IS/MND																
11.10	Revise Admin Draft IS/MND; Screencheck IS/MND																
11.11	Revise Admin Draft IS/MND; Screencheck IS/MND																
11.12	Revise Admin Draft IS/MND; Screencheck IS/MND																
11.13	Revise Admin Draft IS/MND; Screencheck IS/MND																
11.14	Revise Admin Draft IS/MND; Screencheck IS/MND																
11.15	Revise Admin Draft IS/MND; Screencheck IS/MND																

KEY EVENTS:  
 Advisory Committee Meeting  
 Community Workshop  
 Presentation to County

Provides for approximately 11 month process