



LATE DISTRIBUTION

DATE 5-14-12

The BOSONE <bosone@edcgov.us>

Rails to Trails in Louisiana

1 message

Lynn Murray <lynnmurray2684@att.net>

Tue, May 8, 2012 at 12:22 PM

Reply-To: Lynn Murray <lynnmurray2684@att.net>

To: Vickie Sanders <vickie.sanders@edcgov.us>, apachejam <apachejam@hughes.net>, bbbad <bbbad@att.net>, Bob Smart <rsmart41@comcast.net>, Carolyn Gilmore <wildroseranch@wildblue.net>, Connie Eaton <cleaton@sbcglobal.net>, Jackie Neau <jackieno@gmail.com>, James Harville <development@psvrr.org>, Janet L Postlew ait <janet.postlew ait@edcgov.us>, "joe@lanside.com" <joe@lanside.com>, Joy Bowles <joydbowles@gmail.com>, Kathleen New ell <knewell@live.com>, Keith Berry <eldorberry@comcast.net>, Mary Jackson <mary_k_jackson@att.net>, Mike Kenison <michael.kenison@wfadvisors.com>, Mike Kenison <mikejken@yahoo.com>, Phillip Rose <president@psvrr.org>, psrose <psrose@att.net>, Randy Hackbarth <trlyder@pacbell.net>, Kimberly A Kerr <kimberly.kerr@edcgov.us>, LindellPrice <LindellPrice@gmail.com>, Matthew D Smeltzer <matt.smeltzer@edcgov.us>, mcerlane <mcerlane@internet49.com>, nadine Petty <nadine@nspetty.com>, "sarah.philip" <sarah.philip@yahoo.com>, Steven K Payne <Kris.Payne@edcgov.us>, The BOSFIVE <bosfive@edcgov.us>, The BOSFOUR <bosfour@edcgov.us>, The BOSONE <bosone@edcgov.us>, The BOSTHREE <bosthree@edcgov.us>, The BOSTWO <bostwo@edcgov.us>, Theresa R Daly <theresa.daly@edcgov.us>, Webmail crim <crim@innercite.com>

My wife and I recently returned from a trip to Louisiana. While there, we visited the Tamany Trace. Without going into detail (See website.), I'll simply say that I know of no better "testimony" on behalf of the Rails to Trails Program I enjoyed a great roll along a great trail! Here's hoping EDC can do likewise!

<http://www.tammanytrace.org/rules.shtml>

Lynn Murray, Founder

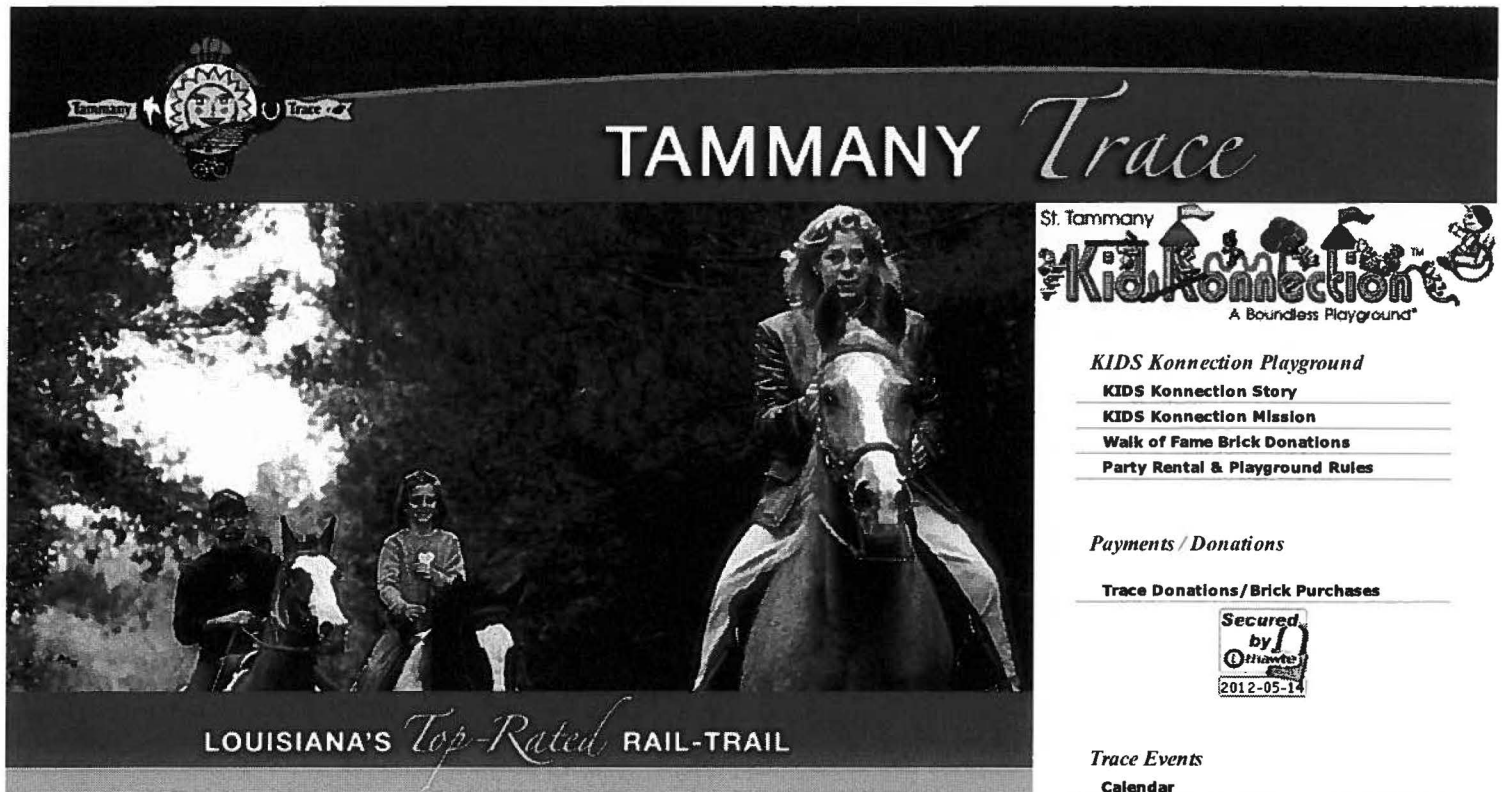
Placerville Mobility Support Group

<http://www.placervillemobilitysupport.com/pmsg-home.php>

Lovin' to live and livin' to roll

530-295-7620 (days)

530-295-3842 (eves)



About the Tammany Trace

History of the Trace

In the early days, the railroad was the lifeblood of St. Tammany Parish. Today, this spur is an extremely popular recreation, transportation and educational corridor. Now called The Tammany Trace, it is Louisiana's first and only rails-to-trails conversion. This multi-purpose public path, created from the Illinois Central Railroad corridor, meanders through loblolly pines, live oaks, and magnolias from Slidell to Covington, Louisiana.

"The White House Millennium Council chose The Tammany Trace as one of 50 Millennium Legacy Trails."

Like our first explorers, you can crisscross urban, suburban and rural St. Tammany on foot, skates, bicycles, and horses and in wheelchairs. This 31-mile asphalted trail and parallel equestrian trail connects five communities—Covington, Abita Springs, Mandeville, Lacombe, and Slidell.

The Trace, as locals call it, also serves as a wildlife conservation corridor, linking isolated parks, creating greenways, and preserving historic landmarks and wetlands. You can observe the natural habitat, bayous, streams and rivers from the vantage point of 31 bridges built on the original railroad trestles.

Experience the Tammany Trace

The community is diverse yet connected by the Trace and a bountiful heritage that makes it uniquely the North Shore. There are many ways you can get involved.

Trace Funding

The St. Tammany Parish government purchased the abandoned Illinois Central Railroad corridor on December 20, 1992. With the help of grants and federal dollars, the St. Tammany Parish government has asphalted 31 miles, remodeled railroad trestles into pedestrian bridges and maintained the Trace.

Support the Trace

Even though the St. Tammany Parish government has provided the staff and funds to make the Trace what it is today, the Tammany Trace Foundation was formed to serve as a fund raising board for the Trace. The Tammany Trace Foundation is a private, nonprofit corporation that raises funds for continued improvement and expansion of The Tammany Trace. The Foundation hosts the annual Holiday of Lights, numerous walks, rides and various events to help fund Trace activities.

We're always looking for volunteers and donations.

Tammany Trace Foundation

Bruce Wainer, President
Ted Brandon, Secretary
Tanya Witchen
Tony LeMón

Susan McHugh
Susan Meyer
Debbi Smith
Yvonne Mademe

Trace Rangers

Trace Rangers, who ensure the safety of all Trace users, are available to answer questions and be of assistance on the Trace daily from sunrise to sunset. Rangers have the only authorized use of motorized vehicles on the Trace.

Ranger duties are as follows:

- Provide the public with information, directions and guidance
- Patrol the Trace



KIDS Konnection Playground

[KIDS Konnection Story](#)

[KIDS Konnection Mission](#)

[Walk of Fame Brick Donations](#)

[Party Rental & Playground Rules](#)

Payments / Donations

[Trace Donations / Brick Purchases](#)



Trace Events

[Calendar](#)

About the Trace

[About the Trace](#)

[History](#)

[Funding](#)

[Support](#)

[Foundation](#)

[Rangers](#)

Tour the Trace

[Tour the Trace](#)

[Covington Trailhead](#)

[Abita Springs Trailhead](#)

[Tammany Trace Trailhead / Caboose](#)

[Mandeville Trailhead](#)

[Visit Lacombe](#)

[Slidell/Carollo Trailhead](#)

Find the Trace

[Find St. Tammany](#)

[The Trace Map](#)

[Mileage Chart](#)

Trace Rules

[Trace Rules](#)

[Trace FAQ's](#)

Home

[Back to Trace Home Page](#)



The BOSONE <bosone@edcgov.us>

Placerville & Sacramento Valley Railroad License1 message

Ken Green <kgreen@surewest.net>

Mon, May 14, 2012 at 8:58 AM

To: District 1 - John Knigh <bosone@edcgov.us>, District 2 - Ray Nutting <bostwo@edcgov.us>, District 3 - Jack Sw eene y
<bosthree@edcgov.us>, District 4 - Ron Briggs <bosfour@edcgov.us>, District 5 - Norma Santiago <bosfive@edcgov.us>

El Dorado Board of Supervisors:

I urge you to consider the historical significance and local heritage of maintaining this railroad and ask that you vote in favor or renewing the 5 year license for the Placerville & Sacramento Valley Railroad on Tuesday, May 15, 2012. Considerable effort has been expended by this non-profit group to maintain and improve it over the last 15 years and their work will continue. It is a local treasure that once gone will never be replaced.

Thank You,
Ken Green



The BOSONE <bosone@edcgov.us>

KEEP THE RAILS

1 message

jonell davis <jojerdavis@gmail.com>

Sat, May 12, 2012 at 8:54 AM

To: bosone@edcgov.us

Please renew the license and keep the rails. jonell davis



The BOSONE <bosone@edcgov.us>

Proposed General Plan Changes

1 message

Harold Samboy <haroldcpa@hotmail.com>

Mon, May 14, 2012 at 5:57 AM

To: bostwo@edc.gov.us, cynthiajohnson@edcgov.us, kathryn.tyler@edcgov.us, bosfour@edcgov.us, bosthree@edcgov.us, bosfive@edcgov.us, bosone@edcgov.us, edc.cob@edcgov.us

I live in El Dorado Hills.

I concur 100% with the contents of Larry Keenan's letter.

In fact, the intersection of Loch Way and Green Valley Road is already very dangerous.

Very truly yours,

Harold Samboy



The BOSONE <bosone@edcgov.us>

Save the rails

1 message

sparky pinola <sparkypinola@yahoo.com>

Sun, May 13, 2012 at 12:59 PM

Renew ing their license w ould be profitable to the community.
I have rode this rail and think it is Great!
Sparky Pinola



The BOSONE <bosone@edcgov.us>

SAVE THE RAILS!!

1 message

Robert Blum <bcblum@sbcglobal.net>
Reply-To: Robert Blum <bcblum@sbcglobal.net>
To: bosone@edcgov.us

Sat, May 12, 2012 at 7:01 PM

Hi John, it has been some time since we have seen each other. Hopefully your staff will redirect this email to your personal account.

I was going to call you but did not want to take up personal time with this issue. Not sure if you are aware of Cathy's passing. She died on Halloween night, less than an hour after she gave birth to our son Pete, 37 years ago. It has been pretty tough the past few months, but my salvation has been my grand daughter, Kaylee. She is unique in that she actually is comfortable around older people. She and I have taken a Spanish course at Folsom Lake College for the past four months and will take our final exam on Monday. I am going to miss her companionship and chatter.

I have heard that you are in support of removing the rails that go through our county and provide a bike trail for a few people that like to ride bikes. To say that I was surprised is an understatement. As a Rotarian, I thought that you would consider ALL of the community and not a few "peddlers". A few months before Cathy died, we took the "Scagit" from Shingle Springs to El Dorado. The car was packed and she had a blast. She was limited to using a walker but the crew helped her on board. I will always have the memory of that trip.

Please John, I urge you and the other supervisors to say NO and cast a vote for all of the community, young and old. Maintain our history.

Thanks and give a call when you can,

Bob Blum
Gold Country Ace Hardware
Cell 530.306.3842



The BOSONE <bosone@edcgov.us>

SAVE THE RAILS, Ratify the License!

1 message

John Moore jr <jmoorej635@sbcglobal.net>
To: bosone@edcgov.us

Fri, May 11, 2012 at 4:55 PM

please consider that the P&VSRR is an irreplaceable historical resource and heritage far more valuable than a bike trail. please ratify the license.

john moore jr B Dorado Brass Band



The BOSONE <bosone@edcgov.us>

SAVE THE RAILS, Renew the license TODAY!!1 message

Robert Blum <bcblum@sbcglobal.net>

Sat, May 12, 2012 at 6:36 PM

Reply-To: Robert Blum <bcblum@sbcglobal.net>

To: Jack Sweeney <bosthree@edcgov.us>, John Knight <bosone@edcgov.us>, Norma Santiago <bosfive@edcgov.us>, Ray Nutting <bostwo@edcgov.us>, Ron Briggs <bosfour@edcgov.us>

As a past member of the Cameron Park Rotary Club I find it strange that there is support in this community to remove a part of our history, especially for the limited use of so few people. The Rotary Club, with the support of the community, was able to provide an observatory for the benefit of ALL of the community.

I respectfully urge you to PLEASE deny the "peddlers" their effort to take away our history and vote **NO** to removing the rails.

Sincerely,

Robert D. Blum
Gold Country Ace Hardware



The BOSONE <bosone@edcgov.us>

Support for the PSVRR License

1 message

Laurence Daniels <ledaniels@trackengineer.com>

Mon, May 14, 2012 at 8:01 AM

To: bosone@edcgov.us

Cc: president@psvrr.org

Commissioner Knight,

This urges your support for the railroad operating license to the Placerville & Sacramento Valley Railroad.

The Railroad has a singular legacy with significant cultural and economic benefit to El Dorado County.

The legacy is the Railroad's origin in the California Gold Rush, a unique event that influenced if not dictated domestic and international economics and politics. The Railroad is a living museum of a time unparalleled in social, political, technological and economic change that is fundamental to our present reality. The Railroad's proposal draws on that legacy with expectation of broad interest.

The Railroad is developed as a community-focused operation. The Railroad encourages multiple use of the right of way, is committed to preserving and enhancing the quality of private property along the alignment, and potentially providing significant economic benefits to each JPA jurisdiction. Importantly, the Railroad is self-supporting and non-profit, with the benefits and enhancements to the community fully compatible with the current and future vision of the community, at no expense to the community (other than the significant benefit of the land use).

As a railroad engineering consultant with credentials in railroad design and operation ranging from North American rail transit to the English Channel Tunnel, the PSVRR is an attraction. Potentially, a very significant attraction. Implemented properly, in full partnership with the community it serves, the Railroad will be a graceful restoration of El Dorado's provenance.

Please accept my appreciation for your thoughtful consider of the PSVRR proposal.

Regards,

Larry

Laurence E. Daniels, P.E.

President

Daniels Railroad Engineering, Inc.

6835 Elverton Drive

Oakland, CA 94611-1110

(510) 338-3747 Work

Cell: 916-801-9435 Mobile

ledaniels@trackengineer.com

www.TrackEngineer.com



The BOSONE <bosone@edcgov.us>

Renew the Speeder's license!

1 message

Bruce W. Bolton <bubba232@comcast.net>

Mon, May 14, 2012 at 6:56 AM

To: Bosone@edcgov.us, Bostw o@edcgov.us, Bostthree@edcgov.us, Bosfour@edcgov.us, Bosfive@edcgov.us

Save the rails. Renew the license for the Speeders, and don't spend tax dollars you don't have on a bike and walking path. Aren't there enough of them already? These historical tracks are disappearing. Leave the rails alone!



The BOSONE <bosone@edcgov.us>

Save The Rails, PLEASE Ratify the License Tuesday!!

1 message

Ken Henry <pahen220@verizon.net>

Mon, May 14, 2012 at 4:29 AM

To: Bosone@edcgov.us, Bostwo@edcgov.us, Bostthree@edcgov.us, Bosfour@edcgov.us, Bosfive@edcgov.us

My Name is Ken Henry and I am from New Jersey. My brother Jack has taken me on a couple of Speeder Rides down these rails and it was a real thrill for me to experience it. It would be ashame to tear up these existing rails in order to make a walking or bike riding trail. Please ratify the "Rails" license on Tuesday, May 15th, so that many others, such as myself, can enjoy riding the Speeders and enjoy this particularly well maintained section of old track in California. Maybe after this 5 year extension of the license, possibly a compromise could be reached and a walking or biking trail could be created next to the tracks and everyone would be a winner. Please don't rush into a hasty decision and start ripping up the existing track. If you haven't yet experienced a Speeder ride, you might want to treat yourself to one. Thank you very much for reading my email. Kenneth S. Henry, 406 West Mantua Avenue, Wenonah, New Jersey 08090



The BOSONE <bosone@edcgov.us>

Do not stop rail development on the whole of the SPTC-JPA corridor

1 message

alan rose <alansidneyrose@hotmail.co.uk>
To: alan rose <alansidneyrose@hotmail.co.uk>

Mon, May 14, 2012 at 2:12 AM

I have watched the progress of this debate for a number of years and remain appalled that a small group of trail extremists, some in positions of power and authority within EDC have been able to prevent the sensible development of the corridor in question as a Rails with Trails amenity.

Supervisors must know that stopping rail development will harm the economic future of the County we all love for nothing! For an unimproved road bed!

Natural trails alongside the valuable rail asset is clearly the best way to go.

Please do not listen to the narrow self regarding developers and trail extremists. Please support the 5-year license and let the railroad folks give you a fabulous facility for FREE.

You commitment to 'due diligence' and preserving EDC heritage suggests to me the least you should do is the 5-year license asked for by the JPA.

You have nothing to lose and much to gain! The silent majority do not want to lose the rails – especially not so elitist cyclist can ride to spend their cash in Folsom!

Please vote to ratify the 5 year license from County Line to Latrobe. Let the Railroaders develop Latrobe as a multi-use hub – The sky is the limit!

Alan Sidney Rose

Placerville



The BOSONE <bosone@edcgov.us>

Save The Rails

1 message

Bob Clarke <crclarke@prodigy.net>

Sun, May 13, 2012 at 7:49 PM

To: bostwo@edcgov.us

Cc: bosone@edcgov.us, bosthree@edcgov.us, bosfour@edcgov.us, five@edcgov.us

To each member of the Board of Supervisors:

I am Bob Clarke and I own 120 acres of land in the Latrobe area along the railroad, north and south of Memory Lane. My property is part of the 1080 acres that my grandparents purchased when they moved to the area in 1910. My grandfather, besides being a rancher, operated a limestone quarry and shipped this material via Southern Pacific to San Francisco. As a kid, I spent several summers with my grandmother at the ranch where the house was less than a stone throw from the railroad. At 86 I'm still a kid and thoroughly enjoy the train. I remember the SP train up and down the track twice a day carrying car after car with fruit from Placerville. The Sacramento Bee was delivered in the afternoon by a man throwing the paper from a box car over the fence into the front yard. And I was there to retrieve it. All the good memories of the train from Sacramento to Placerville.

I am obviously much in favor of retaining the track for train use even if it for the small cars for pleasure and tourist. Scheduled hours of operation would be of no problem to anyone and they are not noisy or an inconvenience.

It seems that bicylist, hikers and horse back riders want the track removed in order to provide the funds to pay for the improvements required for each interests. I have not read anything as to who will be responsible for annual maintenance and upkeep. The county in this day and age certainly is not in a position to pay for it.

I understand that the RR right of way along the entire route runs anywhere from 50 to 100 ft wide. This should be sufficient width to take care of and satisfy use by all parties. No reason for eliminating the railroad enthusiasts. I see it as room for everyone and it would preserve our historic railroad tracks.

Placerville & Sacramento Valley Railroad would maintain the tracks and their cars, where the bikers, hikers, and horse riders would depend on the County to maintain the right of way. That means taxpayers. This entire group would represent only a small number of residents in El Dorado County. The large majority of residents would not use any of the proposed uses other than a possible ride now and then on the railroad. The railroad would be a tourist attraction for the County.

Please do the right thing and extend and/or renew the 5 year operating license for the Placerville & Sacramento Valley Railroad.

Bob Clarke
4861 Memory Lane
Shingle Springs, CA 95682
Ph (530) 676-0108



The BOSONE <bosone@edcgov.us>

SAVE THE RAILS---Ratify the License on Tuesday

1 message

patti <mtnhowards@volcano.net>

Sun, May 13, 2012 at 7:48 AM

To: bosone@edcgov.us, bostwo@edcgov.us, bosthree@edcgov.us, bosfour@edcgov.us, bosfive@edcgov.us

Please DO NOT let this historic railroad go away to add yet another bike path. Bicyclists have paths throughout our state, so please don't replace this wonderful Civil War era rail line with another one.

The bicyclists can find another path....once this rail line is gone, so is a piece of our history.

Thank you for your consideration.

Patricia Howard
Pioneer, CA



The BOSONE <bosone@edcgov.us>

Save the Rails

1 message

retallack1596@comcast.net <retallack1596@comcast.net>

Sun, May 13, 2012 at 7:28 AM

To: bostw o@edcgov.us

Cc: bosone@edcgov.us

I wanted you to know that I will be sending a response to Mr. Bellas' letter in the Mountain Democrat. He was right in saying that you have been a supporter of the "Western Railroad" but doesn't mention the railroad from Shingle Springs down to Latrobe and into Folsom. I want the people of El Dorado County to know how you have voted against the railroad consistently. The supporters of the Western Railroad do not seem to be aware that if you ever win and destroy the tracks from Shingle on down, you will then be after the rest of it, the Western Railroad. Many volunteers have been working tirelessly for years to keep the tracks clear and up to date and many have been working on getting the equipment ready for the tracks. Thousands of hours have been spent working on all aspects of the railroad. All because they want to keep this historic railroad intact. We are asking once again that you ratify the license on Tuesday.



The BOSONE <bosone@edcgov.us>

"SAVE THE RAILS,RATIFY THE LICENSE TUESDAY"

1 message

ye_ole_man@comcast.net <ye_ole_man@comcast.net>

Sat, May 12, 2012 at 9:49 PM

To: bosone@edcgov.us, bostwo@edcgov.us, bosthree@edcgov.us, bosfour@edcgov.us, bosfive@edcgov.us

I vote for the license to be renewed.

We already have fine bike trails in place ,we don't need more, this is the only place we can ride the rails of history and that is very important to me and my grandchildren and all future residents.

Thank you

Darrell Combs

6587 Pacheco Way

Citrus Heights Ca 95610

ye_ole_man@comcast.net



The BOSONE <bosone@edcgov.us>

"SAVE THE RAILS, Renew the license Tuesday".

1 message

Ann & Ron Blum <rablum13@gmail.com>

Sat, May 12, 2012 at 5:22 PM

To: Ray Nutting <bostwo@edcgov.us>, Jack Sw eeney <bosthree@edcgov.us>, Ron Briggs <bosfour@edcgov.us>

Cc: Norma Santiago <bosfive@edcgov.us>, JohnKnight <bosone@edcgov.us>

My husband and I support the Placerville and Sacramento Valley Railroad, and we would like to see a vote from all the Supervisors for the license to be renewed.

Once the rails are removed they can never be replaced. We have ridden the Railroad many times, and it is apparent that the easement is wide enough for all to share.

Someday we would like to take our grand children for a ride from Shingle Springs to El Dorado on the railroad. Please let this happen.

We are on vacation, and a friend informed us of this vote on Tuesday, May 15. If we were home, we would be there to show support.

Thank you,

Sincerely,

Ron & Ann Blum

4824 Mt Aukum Road,

Placerville, Ca



The BOSONE <bosone@edcgov.us>

SAVE THE RAILS, ratify the license Tuesday.

1 message

Joandjon97 <joandjon97@att.net>

Sat, May 12, 2012 at 5:04 PM

To: bosone@edcgov.us

Please know that I don't want to lose the rails. Our history is too important to lose. Once it's gone what do we have to show our children and our grandchildren a bike trail? Big deal. Please think hard and clear before you vote Tuesday and remember the history of our beautiful trains and what it will mean if we lose all of that.

Thank you,

Jo Schrader (I love the rails)



The BOSONE <bosone@edcgov.us>

SAVE THE RAILS, Ratify the license Tuesday

1 message

CASSCIVIL@aol.com <CASSCIVIL@aol.com>

Sat, May 12, 2012 at 11:14 AM

To: bosone@edcgov.us, bostwo@edcgov.us, bosthree@edcgov.us, bosfour@edcgov.us, bosfive@edcgov.us

Cc: slfuson@surewest.net

May 12, 2012

ELDORADO COUNTY SUPERVISORS

330 Fair Lane

Placerville, CA 95667

Dear Supervisors:

This is a special request for you to ratify the license for the Placerville & Sacramento Valley Railroad. This railroad line is a historic landmark that dates back to the time of the Civil War. Furthermore, I have a personal interest in this. When I was a child, My Father was a conductor for the Southern Pacific Railroad. I remember hearing the phone calls from the dispatcher calling him for the "PLACERVILLE LOCAL." He made that trip many times. This is a special memory for me.

I understand that if this license is not ratified, the railroad will be removed and be replaced by a bicycle path at a great expense to the local taxpayers.

Please do not remove this historical landmark. It is very special to me.

Sincerely,

Cass Rogers

875 Tamarisk Road

Palm Springs, CA 92262

Cell: (760) 408-8778



The BOSONE <bosone@edcgov.us>

"SAVE THE RAILS, Ratify the license Tuesday".1 message

Leora Matranga <leora@surewest.net>

Sat, May 12, 2012 at 11:06 AM

To: bosone@edcgov.us

Once they are gone, we won't get them back. Surely there is a way to meet the needs of both groups without destroying the historic rails. The City of Sacramento allowed the magnificent Alhambra Theater to be torn down to make room for a Safeway store. Hopefully there was a lesson learned there!

Leora Matranga



The BOSONE <bosone@edcgov.us>

SAVE THE RAILS, Ratify the License!

1 message

Jerre King <king1031@q.com>

Fri, May 11, 2012 at 5:00 PM

To: bosone@edcgov.us, bostwo@edcgov.us, bostthree@edcgov.us, bosfour@edcgov.us, bosfive@edcgov.us

To The Board:

This Tuesday I understand there is a vote on whether to ratify the license for the Placerville & Sacramento Valley Railroad or to tear it down and build a bike path. As a concerned Senior Citizen I implore you to save the railroad. The train is a very important part of our history and should not be destroyed. There are many bike paths and many places to build new bike paths but there is only one Placerville & Sacramento Valley Railroad. Additionally more people are able to enjoy the train than would be able to enjoy the bike path.

If you take our train away I would not be able to spend the day with my grandchildren riding the rails and enjoying the beautiful scenery. You would also take that pleasure away from many disabled people who could ride a train but would be unable to ride a bike. Also please consider that the train would be a wonderful tourist destination.

Please vote to save our train.

Jerre King



The BOSONE <bosone@edcgov.us>

Please SAVE THE RAILS and Ratify the License

1 message

Hal Erpenbeck <hal.erpenbeck@gmail.com>
To: bosone@edcgov.us

Fri, May 11, 2012 at 1:59 PM

The Placerville & Sacramento Valley Railroad tracks are a real part of the history of our county. With a train operating on the tracks we would have an attraction that everyone could enjoy. So, please Ratify the 5 year license to operate the train.

Hal Erpenbeck

9045 Orchid Shade Dr.

El Dorado Hills, CA 95762

PLEASE CHANGE MY EMAIL TO THE GMAIL ADDRESS

Hal.Erpenbeck@Gmail.com

(H) 530 677-5533

(M) 916 833-9536



The BOSONE <bosone@edcgov.us>

(no subject)

1 message

Shawn Weston <shaw nldoyle@hotmail.com>

Fri, May 11, 2012 at 1:46 PM

Hi,

On **Tuesday, May 15th** the El Dorado Board of Supervisors will vote whether to renew the PSVR 5-year operating license on the track that resides in El Dorado County (starts just past White Rock Road).

I am asking that you support the renewal of the 5 year license for the Placerville & Sacramento Valley Railroad. I am the organizer for the Placerville Autism Group. We are a group of about 60 families and counting that live between Placerville and Sacramento and have family members with autism. We recently had an event with the PSVR and 75 families attended. I have never seen our children happier. Many of our children cannot attend regular outings because of unusual or unruly behaviors. The PSVR took our kids on a series of train rides that just made their day! We plan to do many more through the year to give everyone a chance to ride. Keeping the train on track means so much to them. We all live in El Dorado County and there are very few programs and activities that our families can enjoy. Please do not take this one away from our children!

Don't let this small percent of physically abled extreme cyclists take away a historic community heritage railroad that EVERYONE can enjoy. I cannot go on a family bike ride with my autistic son, but I can take him on a train ride and see his face light up with joy.

Respectfully,

Shawn Weston

www.placervilleautismgroup.com<http://www.meetup.com/Placerville-Autism-Support-and-Playgroup/events/60183262/>

John,

Thanks for all your efforts with corridor issues and your support for trails in El Dorado County.

You have said in the past that you do not care about speeders. I want to respectfully disagree. The speeders are the foot in the door that the FEDS desperately want and I think you know this. A "Right of Entry" means Trail Priority is in jeopardy and it means that the FEDS will fix the cut near Shingle Springs and run speeders in our backyards for the first time ever! ROE means they move forward, Trail Advocates and Shingle Springs homeowners, move backwards. ROE means that the struggle, the battle and the lobbying continue. The Folsom Train guys are aggressively working to overturn Trail Priority and the Shingle Plan. Please do not let them do this! This is a fight for territory, which will end with no extension of the ROE. Please continue to represent EDC trail enthusiasts and point the Folsom Train Hobbyist to Shingle UP, the train section. Uphold Trail Priority and end the struggle and lobbying and let us work to build both the Train and Trail sections for EDC.

Many residents ask me "why is this still going on, don't we have trail priority". I know the FEDS gave you a story about marketing money spent and I am sure they have more reasons to extend the ROE. There are many more EDC residents, homeowners and Trail users that are affected so let me give you an analogy. What would you think about people driving by your house, on the weekends, 9 months of the year, honking their horns, and racing their car engines. Say the county has decided that Semi-trucks can't run on your street, but the county does not care about little cars or horns or your peaceful community. I know you are concerned about the residents in Shingle Springs because you have made the decision for Trail Priority. Please don't give it away to a group of, out of county, Train hobbyist! We have a train in EDC, we do not need another. I know you can relate to homeowners and the peace and quiet in Shingle Springs. Up hold Trail Priority for the majority in EDC.

You have the ability to settle this John, no extension of the "right of entry"!!

As always, thanks for you consideration and attention to Trails in EDC,



Mike Kenison
Milton Ranch, Shingle Springs



Dear Mr. Knight,

Please do not allow
speeders on the railroad
tracks behind our homes.
We are for the tracks and
against the train.

Sincerely,
Christine Alice



May 8, 2012

To Mr. Jon Knight,

I am a citizen
who has found a renewed voice
in the Tea Party.

I vote

I pay my taxes

I do not want a
train

motorcycles

or any noise or speeders

in my Back Yard

Thank You

Clenda Bidigare

April 25, 2012

Supervisor John Knight
330 Fair Lane
Placerville, CA 95667

Dear Supervisor Knight,

The purpose of this letter is to ask for your support of the proposed trail.....and not a train. We have lived in Milton Ranch for over 22 years. The idea of running a train less than 20 yards from our property line is to say the least, objectionable. It is our hope that you will use the authority and good judgment that you've been entrusted with to vote "NO" on any future train proposals.

A walking trail would be a much nicer addition for the county.

Sincerely,

A handwritten signature in cursive script that reads "Martin Pastula".

Martin Pastula

A handwritten signature in cursive script that reads "Kathleen Pastula".

Kathleen Pastula

May 8, 2012

Supervisor John Knight

My wife and I moved to Shingle Springs 20 years in search of some peace and quite that a rural area could provide. My home is right up against the tracks. I was happy with the Shingle Plan. I do not want trains or speeders in my back yard. Please stop the trains and move forward with the trail.

Greg Arico

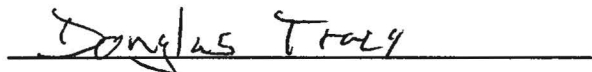
May 8, 2012

Dear Mr. John Knight,

I am a resident of the Milton Ranch community in Shingle Springs. I am writing this letter to let you know I do not want "speeder" traffic on the railroad next to our home and community!

Please consider the wishes of long-term residents of this community in keeping our area as quiet and rural as possible, as it has been for the past 17 years we have lived here.

Thank you for your time,

A handwritten signature in cursive script, appearing to read "Doug Tracy", written over a horizontal line.A handwritten signature in cursive script, appearing to read "Douglas Tracy", written over a horizontal line.


May 8, 2012

Dear Mr. John Knight,

I am a resident of the Milton Ranch community in Shingle Springs. I am writing this letter to let you know I do not want "speeder" traffic on the railroad next to our home and community!

Please consider the wishes of long-term residents of this community in keeping our area as quiet and rural as possible, as it has been for the past 17 years we have lived here.

Thank you for your time,



Heather Tracy

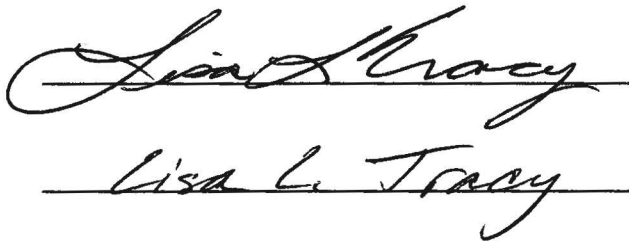
May 8, 2012

Dear Mr. John Knight,

I am a resident of the Milton Ranch community in Shingle Springs. I am writing this letter to let you know I do not want "speeder" traffic on the railroad next to our home and community!

Please consider the wishes of long-term residents of this community in keeping our area as quiet and rural as possible, as it has been for the past 17 years we have lived here.

Thank you for your time,

The image shows a handwritten signature in cursive script, which appears to read "Lisa L. Tracy". The signature is written in dark ink and is positioned above a horizontal line. Below this line, the name "Lisa L. Tracy" is printed in a standard, sans-serif font, also aligned with the line.

TO: Supervisor John Knight

I have lived in Shingle Springs for a long time and I do NOT WANT a speeder or anything else on those tracks. I would love to have a trail come through Shingle Springs! It would be so great for our community and for El Dorado County. Please do the right thing and don't let the speeders come through our backyard!



Joanne Kenison
5761 Milton Ranch Road
Shingle Springs, CA 95682

John Wright,

We residents of
Milton Ranch in Shingle
Springs) we are very
concerned about the
"Speeders" in our
back yard. We do not
want traffic near our
home.

We support friends
of the El Dorado Trail
& would welcome that
in Shingle Springs.
Please consider
voting against the

"Speeders" in Shingle
Springs.

Thank you
 Evelyn & Ray Myers
 5275 Milton Ranch Rd
 Shingle Springs

Dear John Knight,
I want a trail in my backyard
for my friends and family. I do not
want a noisy train on weekends
and Holidays.

From,
Julia Kenison
Shingle Springs

Supervisor John Knight,

I want a trail and no trains. I support the Shingle Plan and we do not want trains in our backyards.

A handwritten signature in blue ink that reads "Paulette Green". The signature is written in a cursive style with a large initial "P" and a long, sweeping underline.

Shingle Springs, CA

4/25/2012

Dear Supervisor Knight,

I am writing to voice my concern about the implementation of a train on the Sacramento-Placerville Transportation Corridor. My family currently must travel to Sacramento County from our home in Shingle Springs to enjoy walking, biking and equestrian trails that would be comparable to the development of a multi-use trail system on the Sacramento-Placerville Transportation Corridor. I strongly believe that the presence of a train on the Corridor is not in keeping with the quiet rural community that my family and my neighbors so thoroughly enjoy here in El Dorado County and ask that you please do your part to ensure that a train is not part of our future.

Nancy Traweek

Supporter of *Friends of El Dorado Trail* and a resident of Shingle Springs

April 25, 2012

Supervisor John Knight,

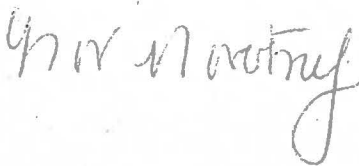
We respectfully ask that you protect our interests and please stop the trains!

We support Friends of the El Dorado Trail and we have lived in Shingle Springs for ten years without "speeders" near our home. We support the Shingle Plan, because we do not want trains in our or our neighbor's back yard.

We are in full support of a trail in Shingle Springs. A train would seriously impact our quality of life and defeat the purpose of us moving out of Sacramento County in to El Dorado County for the quiet rural appeal.

The noise and activity surrounding a train along the rails would be disruptive and not compatible with the residents of Milton Ranch livelihood.

Respectfully,

A handwritten signature in cursive script, appearing to read "Mr & Mrs Novotny".

Mr. & Mrs. James Novotny
5286 Remuda Ct.
Shingle Springs, CA

May 8, 2012

Dear Supervisor Knight,

I am writing as a mother of 2 children in Shingle Springs who utilize the rail road path for dog walking, playing and exploring.

Please, please stop the Speeder Trains from using the track directly behind my house. We live in a very active & community friendly, quiet neighborhood in Milton Ranch. My kids have been shocked and frightened while playing back there to all of a sudden see these speeders coming at them.

It is my understanding from reading the Mt. Democrat that our County Supervisors already voted to keep the speeder off this portion of the track.

Please honor that vote. For the safety and tranquility of this quiet neighborhood please support the Shingle Plan & keep those vehicles away from my property.

Thank you,

A handwritten signature in black ink, appearing to read "Anne Sukys", with a long horizontal flourish extending to the right.

Anne Sukys
Mother of 2
Shingle Springs

4/25/2012

Dear Supervisor Knight,

I am writing to let you know that I am strongly opposed to the development of a train on the Sacramento-Placerville Transportation Corridor. I believe that the presence of a train is not compatible with the rural atmosphere that we enjoy in Shingle Springs as it is precisely that reason that we chose to live in this community. The opportunity to serve a broad base of citizens in our community who enjoy walking, biking and horseback riding far outweighs the more narrowly defined appeal of an excursion train. I am a supporter of the *Friends of El Dorado Trail* and am passionate about the further development of outdoor recreational opportunities for the citizens of El Dorado County.

Tom Traweck

Resident of Shingle Springs

Supervisor John Knight

El Dorado County
Government Center
330 Fair Lane
Placerville, CA 95667
bosone@edcgov.us

April 23, 2012

Dear Supervisor Knight,

"His work has helped to meet the critical needs of our communities and preserve our quality of life. "

I thought I'd start with a quote from **your** web page to express and support my reason for writing you today.

As a life long republican and an active member of our county I can't tell you how much I agree with your comments on your bio. "meet the needs of our Community" & "Preserve our quality of life". These are two very important issues and virtues for us residents in El Dorado County.

One major need in our community is to improve the health, life style, image, property values, and togetherness of the majority of its residents.

I strongly encourage you to support & stand by the Supervisors vote on the issues of the closing access to the Speeder Trains from Shingle down to Folsom. I've attended a few supervisor meetings on this subject over the YEARS. The issue was voted on and passed to restrict the trains down to Folsom. Yet I continue to see those speeder trains ignoring your votes to restrict their use on that corridor . Does your title of Supervisors have no creditability to this group? Why did I give up my time to support my community at your meeting only to have the vote ignored?

We already have a terrific working train park for the Train on Mother Load Drive station up into our county to preserve history. Why do a very, very few train enthusiasts need to ruin property values, increase noise and drastically increase the risk of injury to our children living in Milton Ranch by running "Speeders" so close to our homes?

How does that "preserve our quality of life" you speak about in your bio? Again, we have a portion of the track available to this group already. Why, why, why, do they require more track? Many, many more of our residents in El Dorado country would benefit from a bike, hike, horse trail that would increase the health, enjoyment, lifestyle of that valuable piece of land at a much lower cost to the county. Are you "meeting the needs of a **few** in community at the detriment of the **mass**"?

I beg you to support the Shingle Plan for the overall betterment of our county.

Thank you,

Doug Maiello

5226 Remuda Court

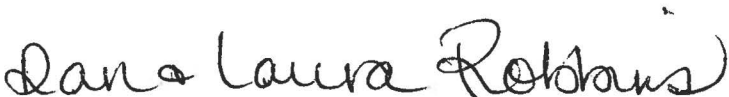
Shingle Springs, CA

Supervisor John Knight,

We support Friends of the El Dorado Trail and have lived in Shingle Springs for years without “speeders” near our home. We support the County Approved Shingle Plan, because it’s an effective and fair compromise.

We want a trail in Shingle Springs and not a train. Please do the right thing by ensuring the trail priority section of the Shingle Plan Compromise is carried out.

Dan & Laura Robbins

A handwritten signature in black ink that reads "Dan & Laura Robbins". The signature is written in a cursive, flowing style.

5583 Milton Ranch Rd

Shingle Springs, CA 95682

Supervisor John Knight

I have supported the Friends of the El Dorado Trail and the idea of making the old rail lines into a walking/riding trail. Having lived in Shingle Springs for many years and used the old lines to jog and walk my dog I do not want to see a train taking over this valuable asset. Please vote for the Shingle Plan.

Mike Marchand

Supervisor John Knight please stop the Speeders,

This argument has been dragging on for years, just stop the speeders and move forward with the Shingle Plan. How many times do we have to right to you to let you know how we feel. We have been in support of a trail for many years.

Stop the Trains Shingle Down,

A handwritten signature in black ink, appearing to read "John Knight", written in a cursive style.

Dear Supervisor John Knight

My home backs up to the railroad tracks. I support the Friends of the El Dorado Trail because I do not want " SPEEDERS " in my back yard. I most certainly want a trail and not a train in Shingle Springs. I have been a resident of Shingle Springs for over eight years.

Sincerely,



Sonja Plattor

5107 Barnett Loop Rd
Shingle Springs CA, 95682

Dear Supervisor John Knight

I have been a resident in Shingle Springs for over eight years. My home backs up to the railroad tracks. I support the Friends of the El Dorado Trail because I do not want " SPEEDERS " in my back yard. I most certainly want a trail and not a train in Shingle Springs.

Sincerely,



Derek Plattor
5107 Barnett Loop Rd
Shingle Springs CA, 95682

Supervisor Knight,

Speeders are not important and we want a trail. The trail will be used more by the county and the train is in the way. Have young children and they will ride the train once and will use the trail weekly, for the rest of their lives. My friends and neighbors will use the trail daily and the train will be used once. And we will have a train Shingle up.

Stop the Speeders,

Valerie Bustus

Supervisor Knight,

Speeders are for a few hobbyists and are not important and we want a trail. The trail will be used and the train will not. Children need a safe place to be outdoors and will use the trail everyday. I will ride the train once. My neighbors will use the trail daily. We will have a train Shingle Up.

Stop the Speeders,

A handwritten signature in black ink, appearing to read "Anthony Davis". The signature is fluid and cursive, with a long horizontal stroke at the end.

Subj: **would you print this twice and you and pam sign one each?**
Date: 4/24/2012 7:02:45 P.M. Pacific Daylight Time
From: mikejken@yahoo.com
To: dplommori@aol.com
Supervisor John Knight,

I support Friends of the El Dorado Trail and I have live in Shingle Springs
for years without "speeders" near my home. I support the Shingle Plan,
because I do not want trains in my back yard.

I want a trail in Shingle Springs and not a train.

Please stop the trains,

A handwritten signature in cursive script, appearing to read "Pam Lomond".

Supervisor Knight,

Stop the Speeders in Shingle Springs. They are not important and we want a trail. The trail will be used more by the county and the train is in the way. Have young children and they will ride the train once and will use the trail weekly, for the rest of their lives.

Do the right thing,

A handwritten signature in black ink, appearing to read "Jay Rinkens". The signature is fluid and cursive, with a long horizontal stroke extending to the right.

March 24, 2012

Supervisor Knight
El Dorado County Government Center
330 Fair Lane
Placerville, CA 95667

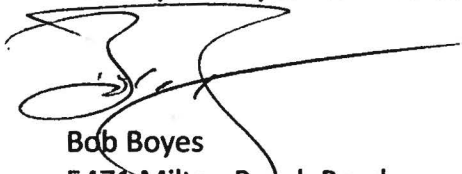
Dear Mr. Knight,

I am writing to ask you to please fight for the Trail Priority from Shingle Springs to Folsom, it gives El Dorado County both a train and trail NOW.

Please defend the Shingle Plan Compromise and stop "speeders" that are violating the law by running the track in Shingle Springs.

We need to stop the "speeders" below Shingle Springs and help get a trail on the trail bed.

Thank you for your consideration.

A handwritten signature in black ink, appearing to read 'Bob Boyes', with a long horizontal stroke extending to the right.

Bob Boyes
5471 Milton Ranch Road
Shingle Springs, CA 95682
(530) 672-9610

March 24, 2012

Supervisor Knight
El Dorado County Government Center
330 Fair Lane
Placerville, CA 95667

Dear Mr. Knight,

I am writing to ask you to defend the Shingle Plan Compromise and stop "speeders" that are illegally running the track in Shingle Springs. Their actions are a slap in the face to El Dorado County.

Please fight for the Trail Priority from Shingle Springs to Folsom, it gives El Dorado County both a train and trail NOW.

We need to stop the "speeders" below Shingle Springs and help get a trail on the trail bed.

Thank you for your consideration.

A handwritten signature in cursive script, reading "Lynnee Boyes".

Lynnee Boyes
5471 Milton Ranch Road
Shingle Springs, CA 95682
(530) 672-9610

Dear John Knight,
I want a trail in my back yard. Not TRAINS

From,
Garrett Kenyon
Shingle Springs

25



LATE DISTRIBUTION

The BGSFOUR <bgsfour@edcgov.us>

DATE 5-14-12**(no subject)**

1 message

Shawn Weston <shawnldoyle@hotmail.com>

Fri, May 11, 2012 at 1:46 PM

Hi,

On **Tuesday, May 15th** the El Dorado Board of Supervisors will vote whether to renew the PSVR 5-year operating license on the track that resides in El Dorado County (starts just past White Rock Road).

I am asking that you support the renewal of the 5 year license for the Placerville & Sacramento Valley Railroad. I am the organizer for the Placerville Autism Group. We are a group of about 60 families and counting that live between Placerville and Sacramento and have family members with autism. We recently had an event with the PSVR and 75 families attended. I have never seen our children happier. Many of our children cannot attend regular outings because of unusual or unruly behaviors. The PSVR took our kids on a series of train rides that just made their day! We plan to do many more through the year to give everyone a chance to ride. Keeping the train on track means so much to them. We all live in El Dorado County and there are very few programs and activities that our families can enjoy. Please do not take this one away from our children!

Don't let this small percent of physically abled extreme cyclists take away a historic community heritage railroad that EVERYONE can enjoy. I cannot go on a family bike ride with my autistic son, but I can take him on a train ride and see his face light up with joy.

Respectfully,
Shawn Weston

www.placervilleautismgroup.com

<http://www.meetup.com/Placerville-Autism-Support-and-Playgroup/events/60183262/>



The BOSFOUR <bosfour@edcgov.us>

Please SAVE THE RAILS and Ratify the License

1 message

Hal Erpenbeck <hal.erpenbeck@gmail.com>
To: bosfour@edcgov.us

Fri, May 11, 2012 at 2:00 PM

The Placerville & Sacramento Valley Railroad tracks are a real part of the history of our county. With a train operating on the tracks we would have an attraction that everyone could enjoy. So, please Ratify the 5 year license to operate the train.

Hal Erpenbeck

9045 Orchid Shade Dr.

El Dorado Hills, CA 95762

PLEASE CHANGE MY EMAIL TO THE GMAIL ADDRESS

Hal.Erpenbeck@Gmail.com

(H) 530 677-5533

(M) 916 833-9536

25



The BOSFOUR <bosfour@edcgov.us>

SAVE THE RAILS, Ratify the License!

1 message

Jerre King <king1031@q.com>

Fri, May 11, 2012 at 5:00 PM

To: bosone@edcgov.us, bostwo@edcgov.us, bostthree@edcgov.us, bosfour@edcgov.us, bosfive@edcgov.us

To The Board:

This Tuesday I understand there is a vote on whether to ratify the license for the Placerville & Sacramento Valley Railroad or to tear it down and build a bike path. As a concerned Senior Citizen I implore you to save the railroad. The train is a very important part of our history and should not be destroyed. There are many bike paths and may places to build new bike paths but there is only one Placerville & Sacramento Valley Railroad. Additionally more people are able to enjoy the train than would be able to enjoy the bike path.

If you take our train away I would not be able to spend the day with my grandchildren riding the rails and enjoying the beautiful scenery. You would also take that pleasure away from many disabled people who could ride a train but would be unable to ride a bike. Also please consider that the train would be a wonderful tourist destination.

Please vote to save our train.

Jerre King



25

EDC COB <edc.cob@edcgov.us>

Folsom El Dorado Trail

1 message

Jeff Wagner <mrimpact@impactphotographics.com>

Sun, May 13, 2012 at 7:21 AM

To: "edc.cob@edcgov.us" <edc.cob@edcgov.us>

Please support a sensible excursion train plan for El Dorado County. Require P&SVRR (Folsom) to operate Shingle Springs to Diamond Springs ONLY and help our museum build out El Dorado County's dream.

Trail Users are using the rail bed as a trail from Latrobe to the County Line. We can't possibly have trains and trail users using the same rail bed for miles. It's not a plan for success. It's not a plan for trails at all. It's a plan for disaster.

Please uphold Trail Priority!

Thank YOU

Jeff Wagner

Impact Photographics

Ph 916-939-0658

Cell 916-799-1925



25

EDC COB <edc.cob@edcgov.us>

Folsom license

1 message

Aaron Karr <a_karr@sbcglobal.net>

Sun, May 13, 2012 at 7:47 AM

To: edc.cob@edcgov.us

Dear Board of Supervisors,

Please support a sensible excursion train plan for El Dorado County. Require P&SVRR (Folsom) to operate Shingle Springs to Diamond Springs ONLY and help our museum build out El Dorado County's dream.

Trail Users are using the rail bed as a trail from Latrobe to the County Line. We can't possibly have trains and trail users using the same rail bed for miles. It's not a plan for success. It's not a plan for trails at all. It's a plan for disaster.

Please uphold Trail Priority!

**Thank you,
Aaron P. Karr**

25
EDC COB <edc.cob@edcgov.us>

Trails

1 message

Carl Drake <carl@zetabroadband.com>

Sun, May 13, 2012 at 8:29 AM

To: "edc.cob@edcgov.us" <edc.cob@edcgov.us>

Please support trails only from El Dorado to Latrobe! We can not lose our right to a walking, biking, horse trail to a small group of train enthusiasts.

The trail should be created for many people, not just a select few.

Thank you for your vote!

Dori Drake

Carl

Sent from my iPad



EDC COB <edc.cob@edcgov.us>

Trail Priority

1 message

Joan Wallace <gowallace@wildblue.net>

Sun, May 13, 2012 at 8:34 AM

To: edc.cob@edcgov.us

Please support a sensible excursion train plan for El Dorado County. Require P&SVRR (Folsom) to operate Shingle Springs to Diamond Springs ONLY and help our museum build out El Dorado County's dream.

Trail Users are using the rail bed as a trail from Latrobe to the County Line. We can't possibly have trains and trail users using the same rail bed for miles. It's not a plan for success. It's not a plan for trails at all. It's a plan for disaster.

Please uphold Trail Priority!

Thank you,

—

Joan Wallace



Folsom trail

1 message

Hiloboy <hiloboy1766@comcast.net>

Sun, May 13, 2012 at 10:01 AM

To: edc.cob@edcgov.us

Please consider a multi use trail between Folsom and Shingle Springs. Cyclists, walkers and horses would use the trail much more than any excursion train. We can't possibly have trains and trail users using the same rail bed for miles. It's not a plan for success.
Thank you for your consideration.

Gordon Vredenburg
El Dorado Hills

P/S My wife and I are in Folsom every day!

25
EDC COB <edc.cob@edcgov.us>

Trail Priority1 message

Jessica Bean <JBean@inallianceinc.com>

Sun, May 13, 2012 at 10:23 AM

To: "edc.cob@edcgov.us" <edc.cob@edcgov.us>

Good morning Supervisors,

Please support a sensible excursion train plan for El Dorado County. Require P&SVRR (Folsom) to operate Shingle Springs to Diamond Springs ONLY and help our museum build out El Dorado County's dream. The Trail has many, many users who use the rail bed as a trail from Latrobe to the County Line. We can't possibly have trains and trail users using the same rail bed for miles. It is impractical and very dangerous for our residents. It is not a plan for success. It is not a plan for trails at all- trail users lose. If trains and trails have to use the same rail bed, then trail users will have to choose between using the trail or being safe. Our residents should not have to make such a choice. Trains alongside walker, joggers, children, equestrians, and cyclists is a plan for disaster. Please uphold Trail Priority!

Thank you,

Jessica Bean
INALLIANCE
Public Relations Director
660 Main Street
Placerville, CA 95667
Phone 916-381-1300 x 170
Fax: 916-381-9026
www.inallianceinc.com

The materials in this message are confidential and may contain Protected Health Information. If you are not the intended recipient, you may not use, copy, or disclose to anyone the message or any information contained in the message. If you have received this message in error, please advise the sender immediately by reply e-mail and delete this message. Thank you for your cooperation.

25



EDC COB <edc.cob@edcgov.us>

El Dorado Rail Trail

1 message

CVRTF <trail@cvrtf.org>

Sun, May 13, 2012 at 10:26 AM

To: edc.cob@edcgov.us

Dear Members of the Board of Supervisors,

I am writing as President of the Central Valley Rails to Trails Foundation regarding the use of the P&SVRR. As we have worked in Sacramento and San Joaquin Counties on the proposed Central Valley Rail Trail project it has come to our attention that trains and trails cannot co-exist without significant added expense and a threat to safety. While this may be a common practice in urban areas where the expectation is to share corridors with motorized vehicles, it is not as appropriate in rural areas where space available for the actual trail corridor is limited.

The whole purpose of creating Class 1 bike lanes, equestrian trails and hiking paths is to provide users with a safe route to travel through the community and between towns. Corridors for non-motorized travel are in far greater demand than that of private or recreation trains that benefit a few "weekend warrior" engineers.

Rail trails are attractive for many reasons - the transportation corridors already exist; they are relatively flat providing an opportunity for people at many levels of physical ability to utilize; and they have a rock base under the tracks that can be ground and widened to provide a solid base for the trail, making it accessible year-round. When the tracks are not removed, they pose a danger to trail users and they take away the opportunity to create a wider base for the trail.

As our regions strives to comply with air quality standards, and the problems with obesity continues to grow, doesn't it make sense to make it attractive for people to get out of their cars onto a safe corridor where families can go for a bike ride, equestrians can walk their horses in a straight line, and pedestrians can enjoy the countryside without the smell of exhaust fumes? If you build it, they will come. If you hamper it with active train tracks the cost will be prohibitive and the trail will lose its attraction.

We ask that you provide the people of El Dorado County with a trail they can safely use and enjoy.

Thank you for considering our views.

Sincerely,

Betsy Mahan
President

12-016.2C.1 of 64

Central Valley Rails to Trails Foundation

PO Box 12, Wilton, CA 95693



**CENTRAL VALLEY
RAILS TO TRAILS
FOUNDATION**

www.cvrtf.org



Trail priority

1 message

James Larsen <jmzlarsen@yahoo.com>

Sun, May 13, 2012 at 8:26 AM

To: "edc.cob@edcgov.us" <edc.cob@edcgov.us>

Please support a sensible excursion train plan for El Dorado County. Require P&SVRR (Folsom) to operate Shingle Springs to Diamond Springs ONLY and help our museum build out El Dorado County's dream.

Trail Users are using the rail bed as a trail from Latrobe to the County Line. We can't possibly have trains and trail users using the same rail bed for miles. It's not a plan for success. It's not a plan for trails at all. It's a plan for disaster.

Please uphold Trail Priority!

James Larsen

25



EDC COB <edc.cob@edcgov.us>

El Dorado Trail

1 message

DIANNA L BAKER <dbaker6960@sbcglobal.net>

Mon, May 14, 2012 at 5:52 AM

To: edc.cob@edcgov.us

Please support a sensible excursion train plan for El Dorado County. Require P&SVRR (Folsom) to operate Shingle Springs to Diamond Springs ONLY and help our museum build out El Dorado County's dream.

Trail Users are using the rail bed as a trail from Latrobe to the County line. We can't possibly have trains and trail users using the same rail bed for miles. It's not a plan for success. It's not a plan for the trails at all. It's a plan for disaster.

Please uphold Trail Priority!

Thank you,

Dianna Baker
Placerville resident and avid trail user.





EDC COB <edc.cob@edcgov.us>

Folsom Train License

1 message

Dave <dshough@comcast.net>

Sun, May 13, 2012 at 9:34 PM

To: edc.cob@edcgov.us

It has come to my attention that the Folsom Train license is on the Board of Supervisors agenda for this week. I also attended a parks commission meeting where I saw that there is a proposal to operate an excursion train on the trail section that the Board of Supervisors previously decided would have a priority for trail usage. First of all, I don't know how this can make the agenda again? Wasn't a clear message sent last time? I view this as an outside interest group trying to wear down the Board of Supervisors and El Dorado County residents who have supported the previous compromise position. I don't know what form the proposal will take, but I urge you to vote to maintain the previous position. We want rail from Shingle Springs to Diamond Springs. We want trail from the county line to Shingle Springs. We do not want outside interests taking away a valuable county resource.

Thanks you,

Dave Shough

El Dorado County Resident



25

EDC COB <edc.cob@edcgov.us>

Rails to Trails

1 message

Ron Mellor <ronmellor@att.net>

Sun, May 13, 2012 at 7:20 PM

To: edc.cob@edcgov.us

Dear Board of Supervisors:

I implore you to please support a sensible excursion train plan for El Dorado County. Require P&SVRR (Folsom) to operate Shingle Springs to Diamond Springs ONLY and help our museum build out El Dorado County's dream. It will just not work to have both trains and trail users using the same rail bed for miles. It would not be safe. I thought you had already settled this! It is high time to move ahead with the Shingle Springs Compromise. Most counties are way ahead of El Dorado in offering its residents trails ways for multi-use horse riding, biking, running and walking. A trail from Latrobe to Placerville would be such a jewel of accomplishments for this county. Let's get 'er done!!

Ron Mellor



EDC COB <edc.cob@edcgov.us>

Folsom train license

1 message

Annemiek Storm <stormean@directcon.net>

Sun, May 13, 2012 at 6:52 PM

To: edc.cob@edcgov.us

This is to all Supervisors, including our own district's Ray Nutting:

Please keep the trail priority for the stretch from Shingle Springs to the Sacramento County line. There are about 11 road crossings in that stretch and it is not practical (and certainly dangerous) to have a train running there unless the crossings would be safeguarded by red blinking lights or arms across the roads. Flaggers would not be safe. The train is fine between Shingle Springs and Missouri Flat road. From Latrobe to The County line the railroad is used by hikers and certainly would be used by cyclist and equestrians as well if it could be turned into a trail! I hope El Dorado County will establish a trail from Placerville to the county line and then connect to the American River pathway. What a treasure that would be and how much use it would get!!

Let's have our train from Shingle Springs to Missouri Flat and keep the Folsom train out of the County.

Respectfully,

Annemiek Storm and Edward Means

25



EDC COB <edc.cob@edcgov.us>

(no subject)

1 message

ARTHURPORTER7233 <arthurporter7233@comcast.net>

Sun, May 13, 2012 at 4:29 PM

To: edc.cob@edcgov.us

We sure like are trail. Hope you can keep it open.



The BOSONE <bosone@edcgov.us>

Folsom train license

1 message

David Seghi <dseghidc@sbcglobal.net>

Mon, May 14, 2012 at 9:24 AM

Dear Supervisor,

Please support a sensible excursion train plan for El Dorado County. Please require that P&SVRR (Folsom) operate from Shingle Springs to Diamond Springs ONLY and help our museum build out El Dorado County's dream.

Trail users are allowed to and are using the rail bed as a trail from Latrobe to the Countyline. We shouldn't have trains and trail users using the same rail bed at the same time.

Thank you, Dave Seghi

Cameron Park



The BOSONE <bosone@edcgov.us>

Save the rails! Please ratify the license!

1 message

Kathy Cooper <cooper110@comcast.net>

Mon, May 14, 2012 at 9:29 AM

To: Bosfive@edcgov.us, Bosone@edcgov.us, Bostwo@edcgov.us, Bostthree@edcgov.us, Bosfour@edcgov.us

Dear Sirs,

Please save the rails! Please extend the license for another five years so the railroaders can continue to operate and take people for rides on the old tracks! These are men and women who volunteer their time to do this. Please consider preserving this piece of history and make the bike path/walking path somewhere else.

Thank you,

The Coopers



Placerville & Sacramento Valley Railroad

Rachel Stech <kstech@verizon.net>

Mon, May 14, 2012 at 9:49 AM

To: bosone@edcgov.us

I am writing to you in support for the renewal of the license for this historic railway. I live in Murrieta California, I have not ridden on the railway and may never have the opportunity to do so, nor am I railroad enthusiast, but I do appreciate the history of this state and this country. It seems a terrible shame to destroy part of this states history for a walking and bike path when those activities can easily be accommodated elsewhere or possibly as an addition to the rail system rather than a replacement. Please vote to save our states history.

Thank you,

Karl Stech
24429 Rovendale Crt
Murrieta, Ca 92562
951 304 2362



Save The Rails And Vote To Ratify The License-Don't Throw It Away Now!

Mark J Spellman <mjbs@mindspring.com>

Mon, May 14, 2012 at 11:15 AM

To: bosfive@edcgov.us, bosfour@edcgov.us, bosthree@edcgov.us, bostwo@edcgov.us, bosone@edcgov.us

Dear Joint Powers,

I very much want to ring in with my pitch for preserving the Placerville Branch rail corridor. It would be such a loss to remove any portion of the rail from the Placerville Branch at this time when there is such a great opportunity to share the right-of-way and build a possible world renowned trail with the existing historic rail right-of-way.

This stretch of rail has historic significance and value in mega-proportion:

- Dating from the mid-1800s it was part of California's first railroad.
- It is a fine example of early rail construction including hand-built culverts which continue to serve their original purpose.
- The track passes through scenic countryside that in some locations is nothing short of spectacular. The scenery showcases the early California history which happened here.

All of these enhance the value of the corridor as a destination of choice for rail fans and biking enthusiasts, as well as the general public. A shared arrangement serves history and adds interest and value for everyone.

As a long standing volunteer and supporter of rail history display, maintenance and operation I have personally seen the benefits to volunteers such as myself (it became a career for me!!) as well as the pleasure on the faces of the many children and adults at being able to see, hear, touch and ride a volunteer railroad. Their appreciation and thank yous for keeping such history alive is often shared and very gratifying for those of us who have participated in making it happen.

Yes, a bike trail with rails will cost more, but the history and future opportunities just can't be thrown away! They are a legacy from the past that belongs to all Californians as well as those from around the world that come to enjoy everything California has to offer. Please don't take this treasure away.

Sincerely,

Mark J. Spellman

Present volunteer member with the Sacramento Southern Rail Road, Niles Canyon Railway and the Placerville and Sacramento Valley Railroad.

Past Sacramento Southern RR Advisory Committee Member and volunteer

Past employee of the Napa Valley Rail Road and Bay Area Rapid Transit District Track Departments

Past member of the Rails-to Trails Conservancy and avid bicycle rider



Save The Rails, PLEASE Ratify the License Tuesday!!

Francine Hamilton <fmhamilton@verizon.net>
To: Francine Hamilton <fmhamilton@verizon.net>

Mon, May 14, 2012 at 10:53 AM

My name is Francine Hamilton and I am a resident of New Jersey. Our friend Jack Henry has taken my husband and I on a couple of Speeder Rides down these rails and it was a real thrill for us to experience this. We believe it would be a shame to tear up these existing rails in order to make a walking or bike riding trail.

Please ratify the "Rails" license on Tuesday, May 15th, so that many others, like us, can enjoy riding the Speeders and enjoy this particularly well maintained section of old track in California. Maybe after this 5 year extension of the license, possibly a compromise could be reached and a walking or biking trail could be created next to the tracks and everyone would be a winner. Please don't rush into a hasty decision and start ripping up the existing track.

If you haven't yet experienced a Speeder ride, you might want to treat yourself to one. Thank you very much for reading our email.

Francine and Ray Hamilton, 629 Blueberry Drive Atco, NJ 08004



Railway

WAYNE GRAHAM <wfg7cag@pacbell.net>

Mon, May 14, 2012 at 12:46 PM

To: bostwo@edcgov.us, bosone@edcgov.us, bosthree@edcgov.us, bosfour@edcgov.us, bosfive@edcgov.us

My husband and I are asking that you do not destroy history. The railway in Folsom is very important to our history. My husband and I have ridden on the railway as well as the one in Old Sac. and all over Denmark and Norway in our travels to Europe please do not destroy our history there are plenty of bike trails and riding trails.

Thank you,

Wayne and Charlotte Graham
Cameron Park

25

May 14, 2012

Dear Supervisors,

I am writing again to express my support for the Shingles Springs Compromise Plan. This compromise would meet the needs of the railroad enthusiast as well as the recreational needs of the county

El Dorado Hills is the home an ever growing number of bike riders, runners and hikers. As more and more of our roads are becoming congested we need bike and pedestrian paths. The Shingles Compromise Plan would not only add to the recreational features of our county, it would in the future bring tourists and help stimulate the economy for the entire county.

Sincerely,

John Raslear

3124 Four Seasons Drive

El Dorado Hills Ca

916-933-22023



25

EDC COB <edc.cob@edcgov.us>

El Dorado Trail

1 message

Mark Swartz <mswartz@swartz-law.com>

Mon, May 14, 2012 at 10:17 AM

To: edc.cob@edcgov.us

Dear Supervisors,

Please vote against the application for a permit to operate an excursion train from El Dorado to Folsom. Far, far more people will use a bike trail that extends from Latrobe to Folsom than will ever benefit from a weekend excursion train. Furthermore, limiting the train's right of way from Shingle Springs to El Dorado would be a more interesting route for the riders/tourest and would help the local businesses in these two towns. There are no businesses or interesting places to stop between Shingle Springs and Folsom. This was way the riders will spend their money in El Dorado County, not in Sacramento County. Make the train a true gold rush train.

Mark Swartz

2337 Knollwood Drive

Cameron Park, CA

(916) 716-8795



EDC COB <edc.cob@edcgov.us>

Rails to Trails

1 message

ron.mellor@sbcglobal.net <ron.mellor@sbcglobal.net>

Mon, May 14, 2012 at 11:20 AM

To: edc.cob@edcgov.us

Dear Board of Supervisors:

I want to cast my vote for you to please support a sensible excursion train plan for El Dorado County. Require P&SVRR (Folsom) to operate Shingle Springs to Diamond Springs ONLY and help our museum build out El Dorado County's dream. Wasn't the Shingle Plan Compromise voted forward on March 28, 2011? It is time to move ahead!

Ron

Supervisor John Knight,

Stop the Speeders and give us a trail now! Come on John, you know this is the right thing to do.

Paullette Greene

Shingle Springs, CA

Answer 11a