

El Dorado ~ Alpine Counties
2011
Agricultural Crop & Livestock Report



DEPARTMENT OF AGRICULTURE WEIGHTS AND MEASURES

Charlene Carveth
Agricultural Commissioner
Sealer of Weights and Measures

311 Fair Lane
Placerville, CA 95667
(530) 621-5520
(530) 626-4756 FAX
eldcag@edcgov.us

Karen Ross, Secretary
California Department of Food and Agriculture

BOARD OF SUPERVISORS

<u>EL DORADO COUNTY</u>		<u>ALPINE COUNTY</u>	
John Knight	District 1	Don M. Jardine	District 1
Ray Nutting	District 2	Henry "Skip" Veatch	District 2
James R. Sweeney	District 3	Phillip D. Bennett	District 3
Ron Briggs	District 4	Terry Woodrow	District 4
Norma Santiago	District 5	Tom Sweeney	District 5

In accordance with Section 2279 of the California Food and Agricultural Code, I hereby submit the 2011 El Dorado & Alpine Counties Crop Report.

The gross crop value for the County of El Dorado was \$36.1 million, representing an overall increase of 3.2% from 2010 values. Due to inclement weather, fruit and nut crops decreased 9.2%. For the first time since 2006, timber production increased. 2011 production results increased 49% in comparison to the 2010 numbers. The individual unit value of timber also increased by 61.9%, leading to an overall production value of \$4.8 million, which represents a 74% increase from 2010 values. Additionally, grape values increased 4.9% to \$5.1 million.

Monetary values in this report are F.O.B. (Freight On Board) and do not reflect net returns or profits realized by the growers. It is estimated that the impact of agriculture to the County of El Dorado's economy totaled approximately \$363 million in 2011, of which, the wine industry contributed an estimated \$146 million while Apple Hill added another \$112 million.

Alpine County's gross crop value for 2011 was estimated to be \$5.3 million, which is a 5.2% increase from the 2010 value.

I wish to express my sincere appreciation to the many individuals and organizations which have contributed information to make this report possible.

Respectfully submitted,

CHARLENE CARVETH
Agricultural Commissioner
Sealer of Weights and Measures



2011 CROP REPORT

Department of Agriculture/Weights & Measures Staff

Agricultural Commissioner/Sealer of Weights and Measures

Charlene Carveth

Agricultural Biologist/Standards Inspectors

Chris Flores ~ Jessica Honeycutt

~ Heather Meleski ~

LeeAnne Mila ~ KC Sare ~ Greta Shutler

Wildlife Services

John Chandler ~ Jody Nicholas

Administrative Staff

Deanna Tompkins ~ Myrna Tow

GWSS Trappers/Seasonal

Mike Denton ~ John Graham

TABLE OF CONTENTS

EL DORADO COUNTY

Fruit & Nut Crops	2
Apples	2
Pears	2
Wine Grapes	3
Other Fruit & Nut Crops	3
Totals	4
Livestock	5
Hay & Pasture	5
Apiary Products	6
Nursery Products	6
Christmas Trees	7
Timber Harvested and By-products	7
Agricultural Production Summary	8
Agricultural Department Summary	10

ALPINE COUNTY

Livestock	9
Hay & Pasture	9
Agricultural Department Summary	10

Photos by Jessica Honeycutt and Chris Flores

Fruit and Nut Crops

Apples

Crop	Year	Acreage	Total Production	Unit	Value Per Unit	Total Value
Fresh	2011		3,640	Tons	\$1,610	\$5,860,400
	2010		4,992	Tons	\$1,632	\$8,146,944
Cannery/Apple Hill Products*	2011		2,156	Tons		\$409,424
	2010		2,995	Tons		\$568,995
Juice/Cider	2011		66,677	Gallons		\$460,071
	2010		71,200	Gallons		\$495,263
Total Apples	2011	850				\$6,729,895
	2010	845				\$9,211,202

*Includes all "enhanced agricultural products" such as fruit/nut pies and jams

Pears

Crop	Year	Acreage	Production Per Acre	Total Production	Unit	Value Per Unit	Total Value
Bartlett/Bosc	2011	70	6.91	484	Tons	\$2,300	\$1,113,200
	2010	89	3.23	287	Tons	\$1,820	\$523,195
Asian	2011	40	7.38	295	Tons	\$2,520	\$743,400
	2010	41	5.25	215	Tons	\$2,460	\$529,515
Total Pears	2011	110					\$1,856,600
	2010	130					\$1,052,710

Fruit and Nut Crops

Wine Grapes

Crop	Year	Acreage	Production Per Acre	Total Production	Unit	Value** Per Unit	Total Value
Bearing	2011	2,010	2.12	4,269	Tons	\$1,295	\$5,137,223
	2010	1,946	2.40	4,668	Tons	\$1,279	\$4,898,612
Non-bearing	2011	272	Total Acreage* = 2,282 acres				
	2010	261					

*2011 acreage numbers reflect actual responses by the agricultural community for the 2011 Wine Grape Survey.

** Reflects the average price of all wine grape varieties.

Other Fruit & Nut Crops

Crop	Year	Acreage	Production Per Acre	Total Production	Unit	Value Per Unit	Total Value
Peaches	2011	105	1.67	175	Tons	\$3,620	\$633,500
	2010	105	2.00	210	Tons	\$3,320	\$697,200
Plums	2011	52	0.42	22	Tons	\$2,840	\$62,480
	2010	52	1.11	58	Tons	\$3,040	\$175,469
Walnuts	2011	140	0.51	72	Tons	\$2,200	\$158,400
	2010	145	0.35	51	Tons	\$3,240	\$164,430
Cherries	2011	31	0.68	21	Tons	\$5,500	\$115,500
	2010	30	0.43	13	Tons	\$5,520	\$71,760
Olives	2011	62	0.15	9	Tons	\$7,332*	\$65,988*
	2010	54	0.26	14	Tons	\$4,806	\$68,245
Totals	2011						\$1,035,868
	2010						\$1,177,104

*Value and Total Value based on gallons of olive oil sold.

Fruit and Nut Crops

Totals

Totals	Year	Total Acreage	Total Value
Fruit & Nut Crops	2011	3,632	\$14,759,586
	2010	3,568	\$16,339,628
Minor & Misc. Crops*	2011		\$702,367
	2010		\$689,256
Total	2011		\$15,461,953
	2010		\$17,028,884

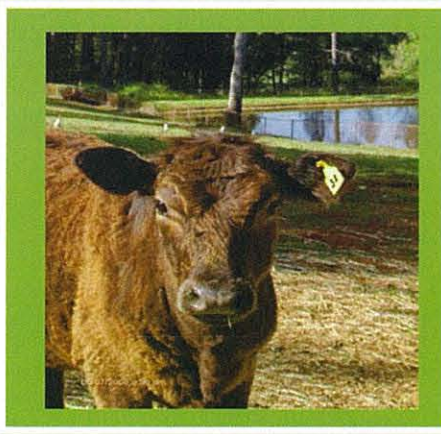
*Minor & Miscellaneous Crops include truck gardens, berries, nectarines, citrus, chestnuts, avocados, pumpkins, tomatoes, persimmons, etc.



Livestock

Livestock	Year	Number of Head	Total Live Weight	Unit	Value Per Unit	Total Value
Cattle/Calves	2011	5,614	50,189	cwt.**	\$100.00	\$5,018,900
	2010	6,078	61,084	cwt.**	\$93.40	\$5,705,246
Goats/Kids	2011	2,942		Per head	\$185.00	\$544,270
	2010	2,802		Per head	\$225.00	\$630,450
Miscellaneous*	2011					\$1,342,000
	2010					\$1,279,256
Total Livestock	2011					\$6,905,170
	2010					\$7,614,952

*Misc. includes: Turkeys, Ducks, Chickens, Llamas, Alpacas, Sheep, Hogs/Pigs, Emu, Ostrich, and Wool By-products.



**cwt.= hundredweight
= 100 pounds.

Hay and Pasture

Crop	Year	Acres	Units		Value Per Unit	Total Value
Hay	2011	220	293	Tons	\$228.00	\$66,804
	2010	216	286	Tons	\$135.00	\$38,610
Pasture, Irrigated	2011	927			\$142.00	\$131,634
	2010	927			\$142.00	\$131,634
Rangeland	2011	233,000			\$18.00	\$4,194,000
	2010	233,000			\$18.00	\$4,194,000
Total	2011					\$4,392,438
	2010					\$4,364,244

Apiary Products

	Year	Units	Total Value
Apiary Products	2011	4,000 Colonies	\$711,950
	2010	4,000 Colonies	\$745,000

Nursery Products

	Year	Acreage	Total Value
Total Nursery	2011	39	\$1,818,119
	2010	38	\$1,780,125



Christmas Trees

	Year	Production	Unit	Unit Value	Total Value
Choose and Cut	2011	37,100	Each	\$50.00	\$1,855,000
	2010	41,189	Each	\$49.78	\$2,050,388
Wholesale	2011	5,890	Each	\$33.00	\$194,370
	2010	6,350	Each	\$26.50	\$168,275
Total Christmas Trees	2011				\$2,049,370
	2010				\$2,218,663

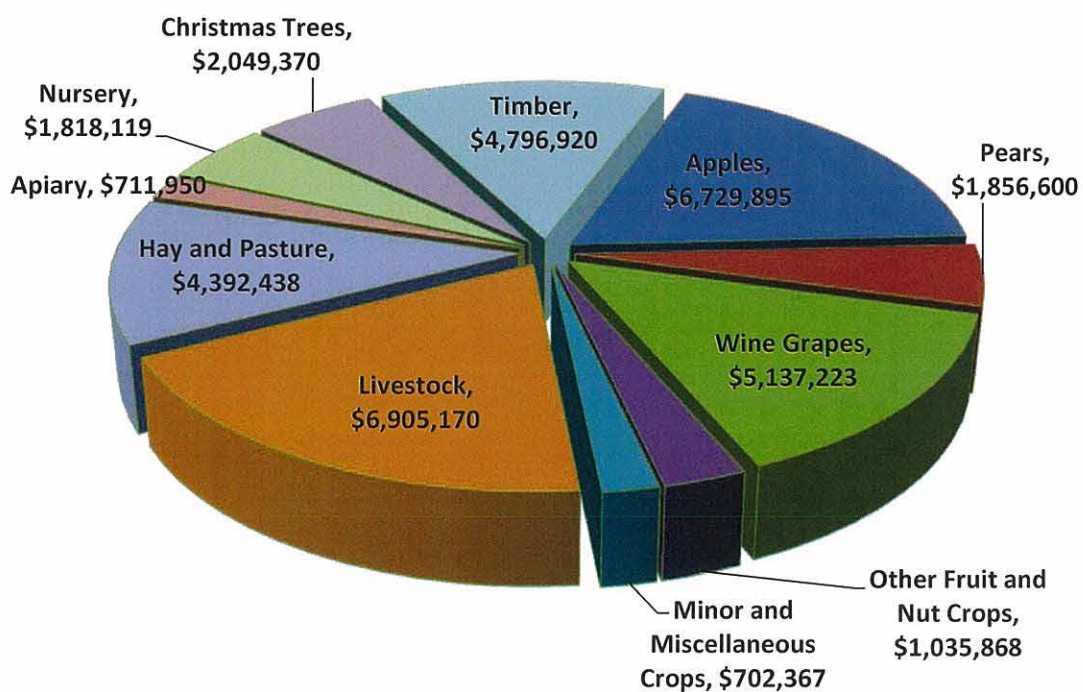


Timber Harvested and By-products

	Year	Production	Unit	Total Value
Private and Public Forest	2011	40,467	Million Board Feet	\$4,750,723
	2010	19,832	Million Board Feet	\$1,201,507
Wood Sales and Permits	2011	2,161	Million Board Feet	\$46,197
	2010	2,008	Million Board Feet	\$41,950
Total Timber	2011			\$4,796,920
	2010			\$1,243,457

Agricultural Production Summary

Crop	2011	2010
Apples	\$6,729,895	\$9,211,202
Pears	\$1,856,600	\$1,052,710
Wine Grapes	\$5,137,223	\$4,898,612
Other Fruit and Nut Crops	\$1,035,868	\$1,177,104
Minor and Miscellaneous Crops	\$702,367	\$689,256
Livestock	\$6,905,170	\$7,614,952
Hay and Pasture	\$4,392,438	\$4,364,244
Apiary	\$711,950	\$745,000
Nursery	\$1,818,119	\$1,780,125
Christmas Trees	\$2,049,370	\$2,218,663
Timber	\$4,796,920	\$1,243,457
Agricultural Gross Value	\$36,135,920	\$34,995,325




Alpine County Livestock

Livestock	Year	Number of Head	Total Live Weight	Unit	Value Per Unit	Total Value
Cattle/Calves	2011	1,810	26,588	cwt.**	\$100.00	\$2,658,800
	2010	1,765	25,927	cwt.**	\$93.40	\$2,421,582

** cwt.= hundredweight = 100 pounds.

Alpine County Hay and Pasture



Crop	Year	Acres	Units		Value Per Unit	Total Value
Hay	2011	122	352	Tons	\$198.00	\$69,696
	2010	122	326	Tons	\$135.00	\$44,010
Pasture, Irrigated	2011	1,500			\$125.00	\$187,500
	2010	1,500			\$125.00	\$187,500
Rangeland	2011	133,000			\$18.00	\$2,394,000
	2010	133,000			\$18.00	\$2,394,000
Total	2011					\$2,651,196
	2010					\$2,625,510

2011 Agricultural Department Summary

In 2011, the El Dorado and Alpine County Agriculture and Weights & Measures Department:

- Placed over 745 insect traps throughout the counties, in both urban and rural areas, and serviced them 7,065 times, to detect and prevent the establishment of exotic and harmful pests (Pest Detection Program);
- Placed 375 Glassy-winged Sharpshooter (GWSS) traps throughout the county, in rural, urban and nursery settings, inspecting and servicing them 4,757 times (Pest Management Program);
- Inspected all nursery stock entering the county from known GWSS infected areas (Pest Management Program);
- Conducted 685 inspections at over 340 locations to prevent the introduction of detrimental pests that are not of common occurrence in California (Pest Exclusion Program);
- Provided management of wildlife that were depredating livestock, property and/or presenting a hazard to public health and safety (Wildlife Management Program);
- Issued 75 Certified Producer's Certificates for growers selling at Certified Farmer's Markets;
- Registered 20 organic producers;
- Coordinated invasive weed control, education and eradication among federal, state, county and private agencies in El Dorado and Alpine Counties. Participated as an integral partner in the El Dorado, Lake Tahoe Basin, and Alpine/Upper Carson Weed Management Area Groups (Pest Eradication Program);
- Conducted the Pesticide Monitoring Program to protect public health, property, the environment and agricultural workers in partnership with the California Department of Pesticide Regulation (Pesticide Use Monitoring Program);
- In coordination with El Dorado County Planning Department staff, the El Dorado County Farm Bureau, the Agricultural Commission, and agricultural industry leaders, worked to update the El Dorado County General Plan and Zoning Ordinance in order to further protect and promote the agricultural industry of the county;

2011 Agricultural Department Summary Continued

- Inspected 59 scales for 21 Certified Producers, 46 scales for 21 individual farms, 17 platform scales for 17 wineries, 6 livestock scales, and 7 scales at local nurseries. Scales are inspected to ensure consumer protection and equity in the marketplace (Weights and Measures Program); and
- In conjunction with the local Resource Conservation District, Ag Department staff certified 19 local farms for the Fish Friendly Farming Program through the California Land Stewardship Institute.