



**RESOLUTION NO. 132-2012**

**OF THE BOARD OF SUPERVISORS OF THE COUNTY OF EL DORADO**

**WHEREAS**, the County of El Dorado is mandated by the State of California to maintain an adequate and proper General Plan; and

**WHEREAS**, because of that mandate El Dorado County’s General Plan and the various elements thereof must be continually updated with current data, recommendations, and policies; and

**WHEREAS**, the Development Services/Planning Services Department and the Planning Commission have made recommendations to the Board of Supervisors regarding potential amendments of the Land Use Element of the General Plan; and

**WHEREAS**, the Board of Supervisors has reviewed and held public hearings on the recommended amendments to the land use element; and

**WHEREAS**, the Board of Supervisors finds that the proposed amendments to the General Plan are consistent with all elements of the General Plan not otherwise amended.

**NOW, THEREFORE, BE IT RESOLVED** that the County of El Dorado Board of Supervisors hereby approves and accepts the environmental documents on the following amendments to the General Plan, and approves and adopts the following amendments to the General Plan based on the findings and reasons set forth in the staff reports and Planning Commission’s actions, except as may be noted herein:

1. DIAMOND SPRINGS AREA – Industrial (I) to Commercial (C), consisting of 27.61 acres, identified by Assessor’s Parcel Numbers 051-250-12, 051-250-46, 051-250-51, and 051-250-54 being described as Sections 19, 24, and 30, Township 10 North, Range 10 East, M.D.M., as shown in Exhibit A.

PASSED AND ADOPTED by the Board of Supervisors of the County of El Dorado at a regular meeting of said Board, held the 11th day of September, 2012, by the following vote of said Board:

Ayes: Sweeney, Briggs, Knight, Nutting, Santiago  
Noes: None  
Absent: None

Attest:  
Terri Daly  
Acting Clerk of the Board of Supervisors

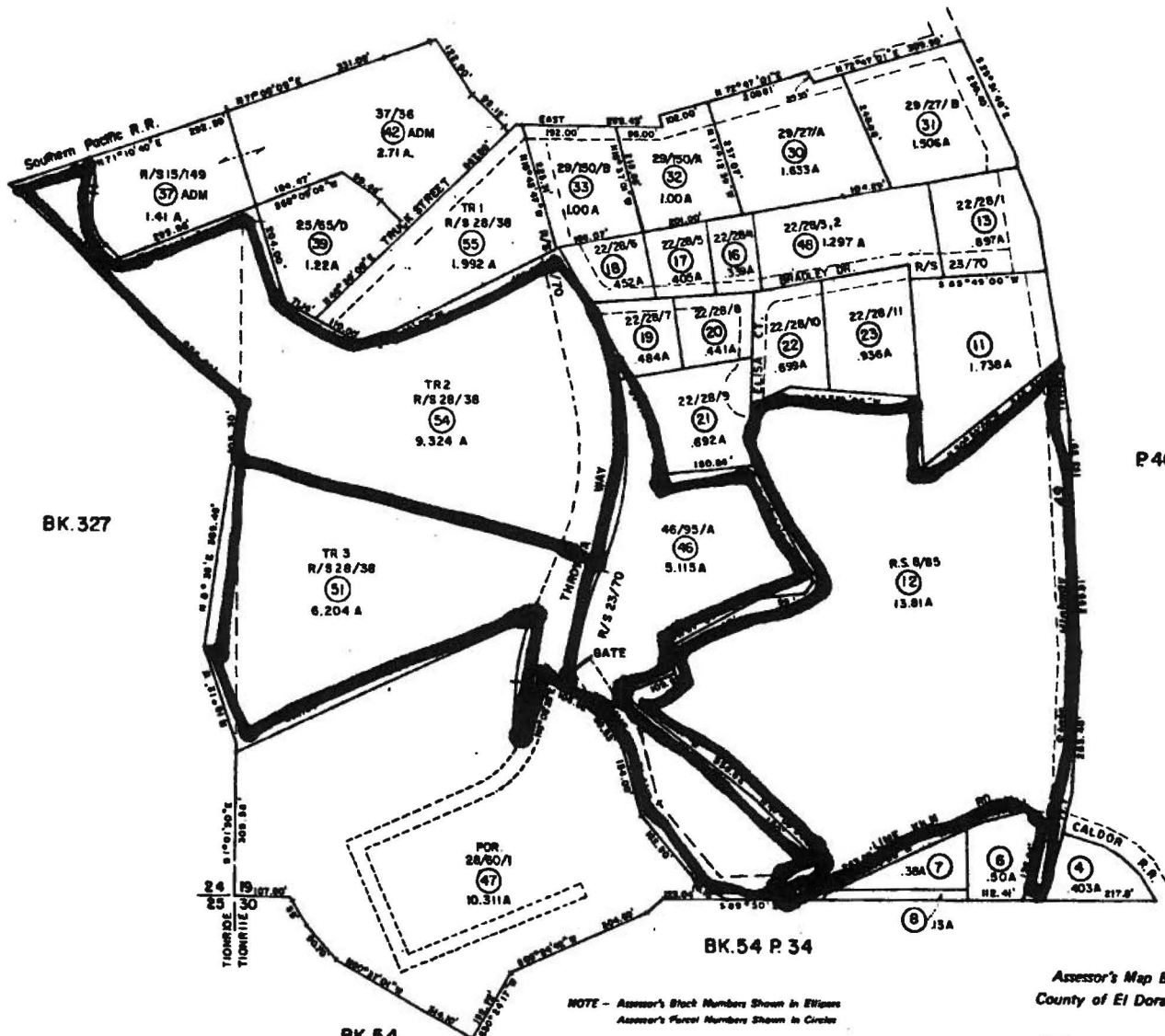
By: Marcie McFarland  
Deputy Clerk

John R. Knight  
John R. Knight, Chairman, Board of Supervisors

POR. LOTS 3,4, & 5 SEC. 19 T. 10N. R. 11E & POR. SEC. 24 T. 10N. R. 11E  
& POR. SEC. 30 T. 10N. R. 10E. M.D.M.

Tax Area Code

51:25



NOTE - Assessor's Block Numbers Shown in Ellipses  
Assessor's Parcel Numbers Shown in Circles

Assessor's Map Bk. 51 - Pg. 25  
County of El Dorado, California

REV. 6/12/2012

12-1084  
#32  
9/11/12

EXHIBIT A  
GENERAL PLAN RESOLUTION  
12-1084 B 2 of 2