



LATROBE ROAD CONNECTOR PROJECT #66116

Presented to the Board of Supervisors
December 18, 2012

Legistar # 12-1342

El Dorado County
Transportation Division

Staff is requesting the Board:

2

1. Receive and file Latrobe Road Connector Study, and acknowledge Condition No. 27 for West Valley Tentative Map (TM99-1359) as complete

2. Direct staff to return to the Board with a recommendation on mitigation to improve Level of Service at the White Rock Road and Latrobe Road Intersection based on results of the Travel Demand Model and land use forecast updates



Latrobe Road Connector

December 18, 2012

Agenda

3

- Background
- Discussion
- Staff Recommendations/Next Steps



Latrobe Road Connector

December 18, 2012

Background:

4

General Plan
projects LOS
deficiencies by
2025

Latrobe Road from
Investment Blvd. to
U.S. 50

White Rock Road
from Manchester
to Latrobe Road



Latrobe Road Connector

December 18, 2012



4 Mitigation Measures recommended by EDAW*

6

Mitigation 5.4-1(a):
Amend the circulation
diagram to include a
new arterial roadway
from El Dorado Hills
Business Park to U.S. 50

Mitigation 5.4-1(b):
Add new growth control
implementation measure

Mitigation 5.4-1(c):
Modify LOS Policies to
permit the Board to
allow roadway segments
to operate at LOS F

Mitigation 5.4-1(d):
Amend the circulation
diagram to include a
frequent transit service to
the El Dorado Hills
Business Park



4 General Plan Policies and Measures were created to resolve LOS concerns:

7

Policy TC-1u:

The County shall amend the Circulation Diagram to include a new arterial roadway from the west side of the El Dorado Hills Business Park to U.S. 50.

Policy TC-1v:

The County shall consider modification of the circulation diagram to include a frequent transit service operating on exclusive right-of-way to the El Dorado Hills Business Park from residential communities in El Dorado County and from the City of Folsom.

Policy TC-1y:

Development through 2025, within Traffic Analysis Zones 148 and 344, shall be conditioned so that a cap of 10,045 full-time employees is not exceeded, unless it can be demonstrated that a higher number of employees would not violate established level of service standards.

Measure TC-V(1):

Work with SACOG*, Sacramento County and the City of Folsom to identify potential alignment for a new arterial roadway from the west side of El Dorado Hills Business Park to U.S. Highway 50 [Policy TC-1u]



In addressing LOS concerns for the Latrobe Road/White Rock intersection, the County modified conditions of approval for proposed development West Valley Village (TM99-1359) to include Condition No. 27

Discussion:

9



The Latrobe Road Connector Study analyzed four developed alternatives:

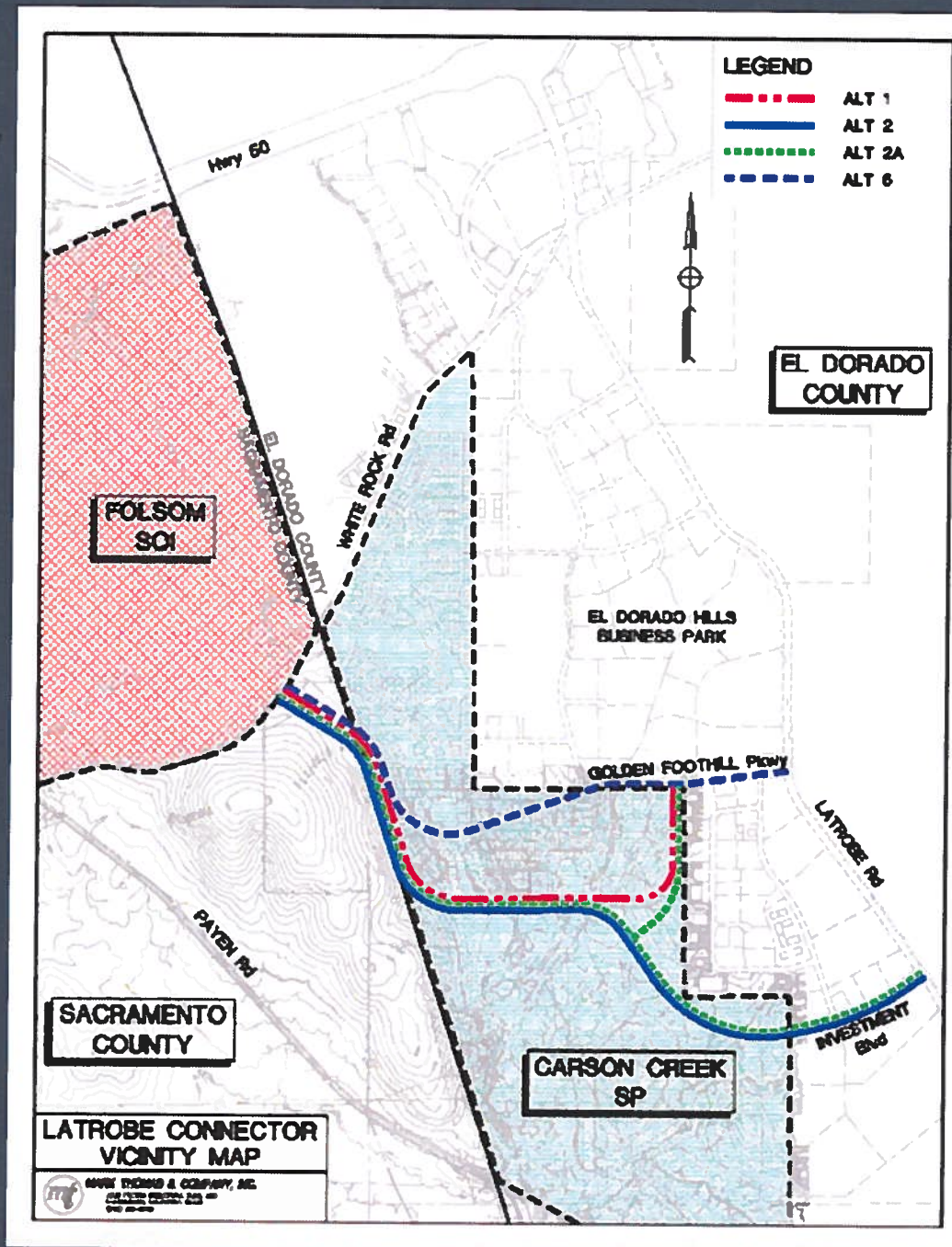
- Alternative 1
- Alternative 2
- Alternative 2a
- Alternative 5



Latrobe Road Connector

December 18, 2012

Latrobe Road Connector Vicinity Map



Evaluation Criteria:

- “Fixing” the Intersection (50%)
- Project Cost (30%)
- Environmental Impacts (10%)
- Consistency with Approved Documents (10%)
 - Sacramento County General Plan
 - City of Folsom’s SOI Circulation Plan
 - Carson Creek Specific Plan Circulation Diagram



Latrobe Road Connector

Staff Recommendation:

12

- Staff is working on updating the Travel Demand Model (TDM) and land use forecasts, which may provide new information regarding the LOS at the White Rock Road and Latrobe Road intersection.
- Therefore, staff recommends that the decision be deferred until the completion of the TDM and land use forecast efforts.



Next Steps:

13

1. Staff to provide memo to Development Services, with status of approval for Condition No. 27 for the West Valley Village Tentative Map TM99-1359.
2. Staff to return to the Board subsequent to completion of the TDM and land use forecast updates, if it is determined that mitigation is required at the White Rock Road/Latrobe Road intersection.



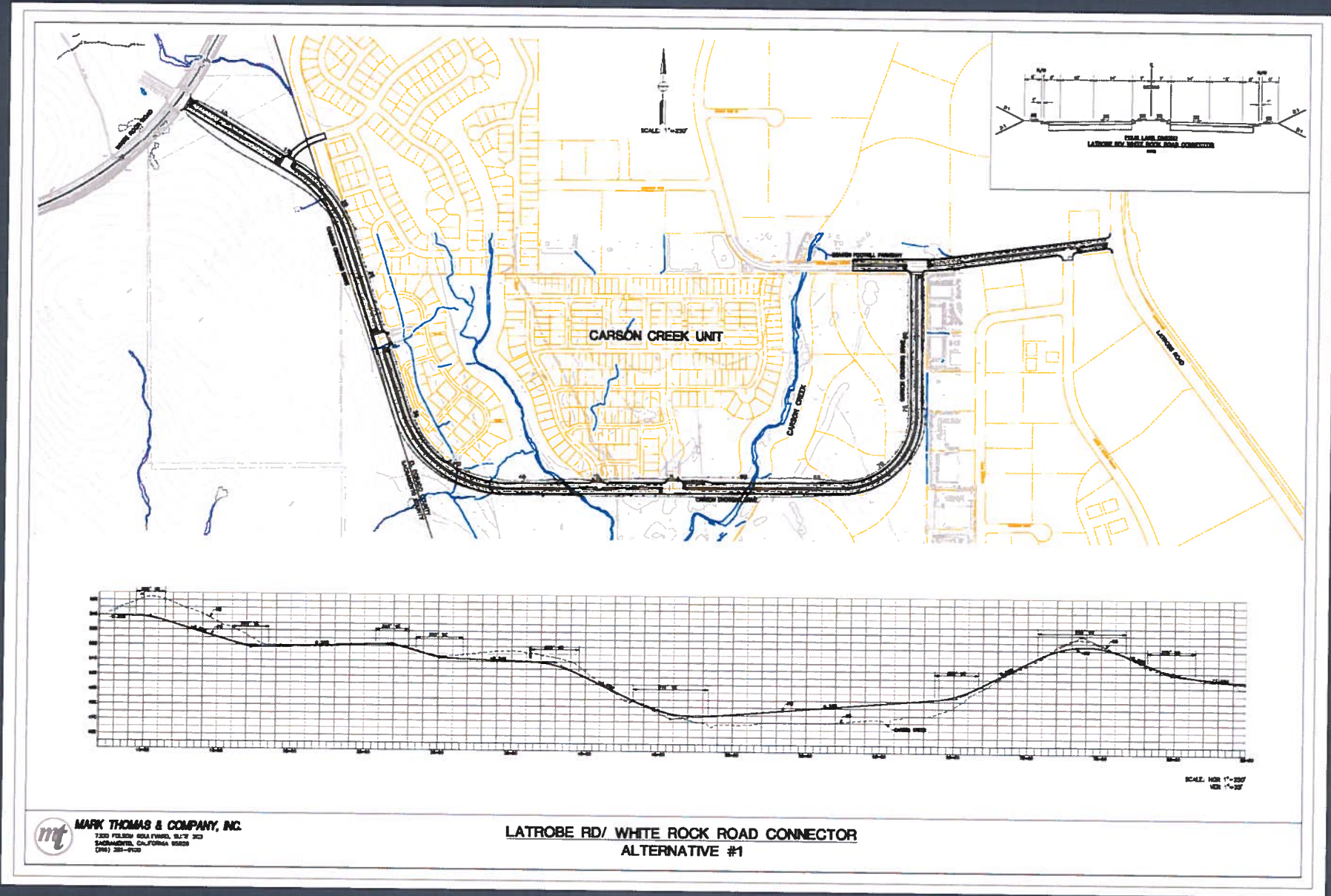
Latrobe Road Connector

December 18, 2012

14

Backup Slides

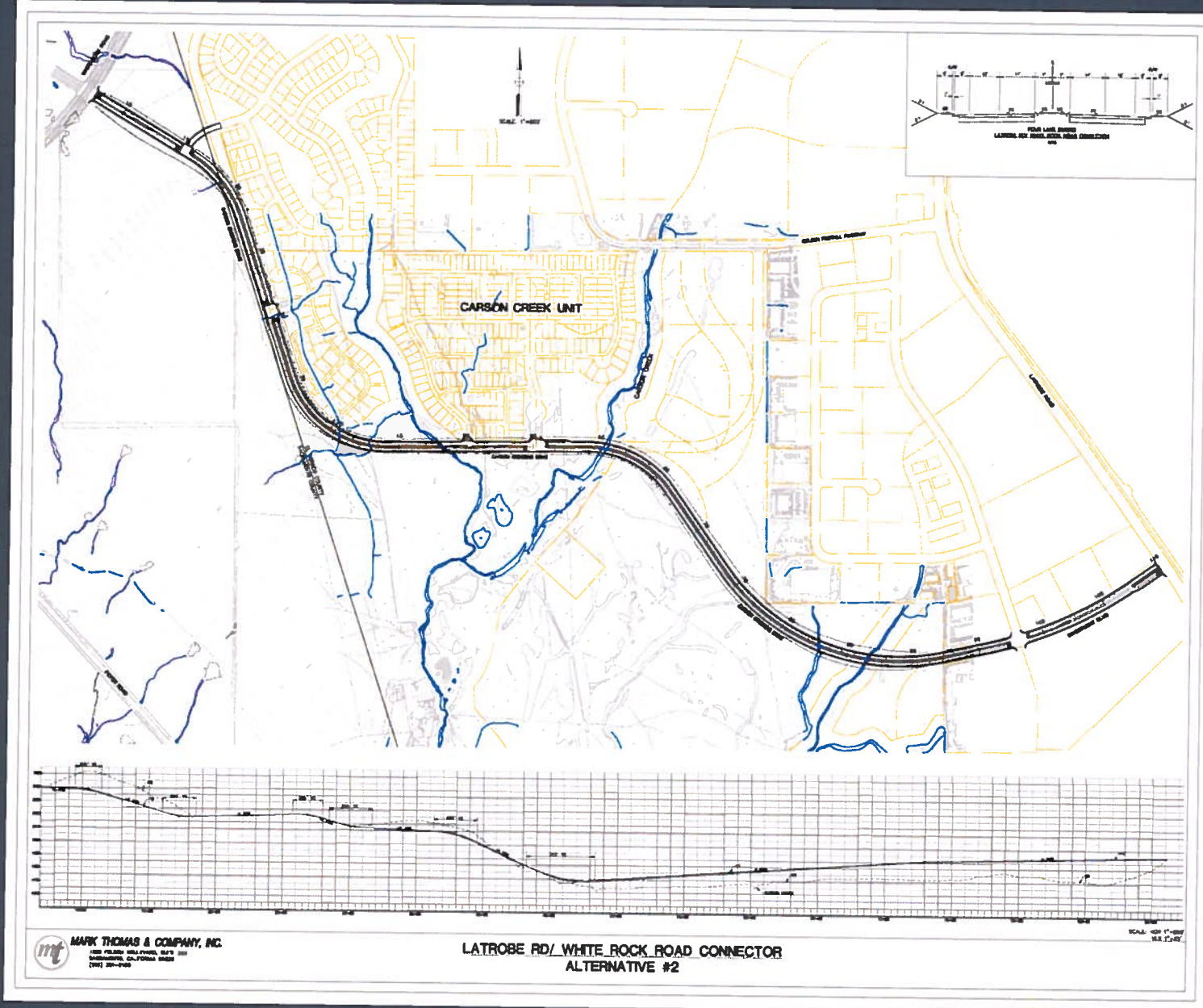
Alternative 1



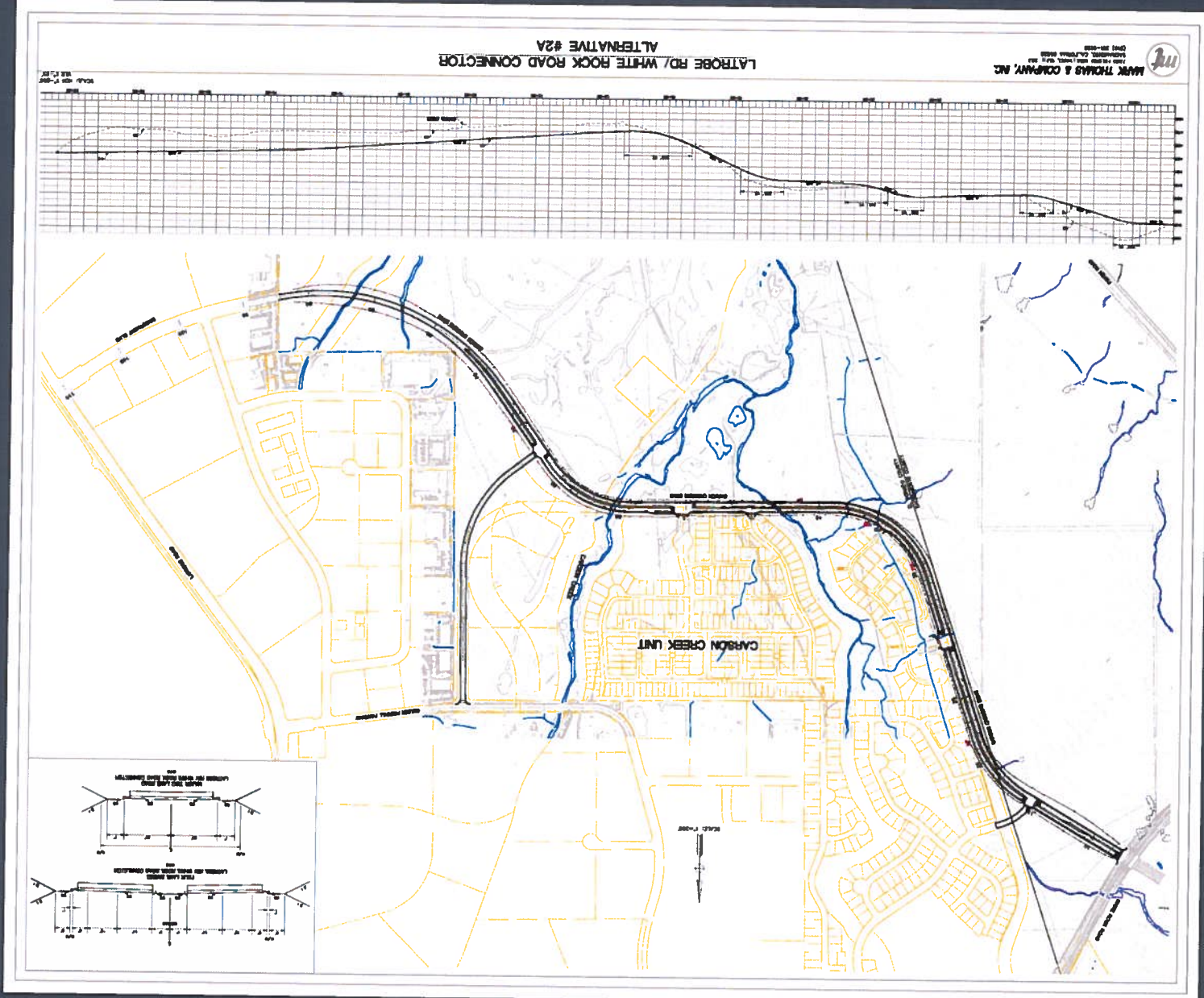
mt MARK THOMAS & COMPANY, INC.
7300 FOLSOB ROAD, FLOOR 5, SUITE 300
SACRAMENTO, CALIFORNIA 95829
(916) 381-9120

**LATROBE RD/ WHITE ROCK ROAD CONNECTOR
ALTERNATIVE #1**

Alternative 2



Alternative 2a



Alternative 5

