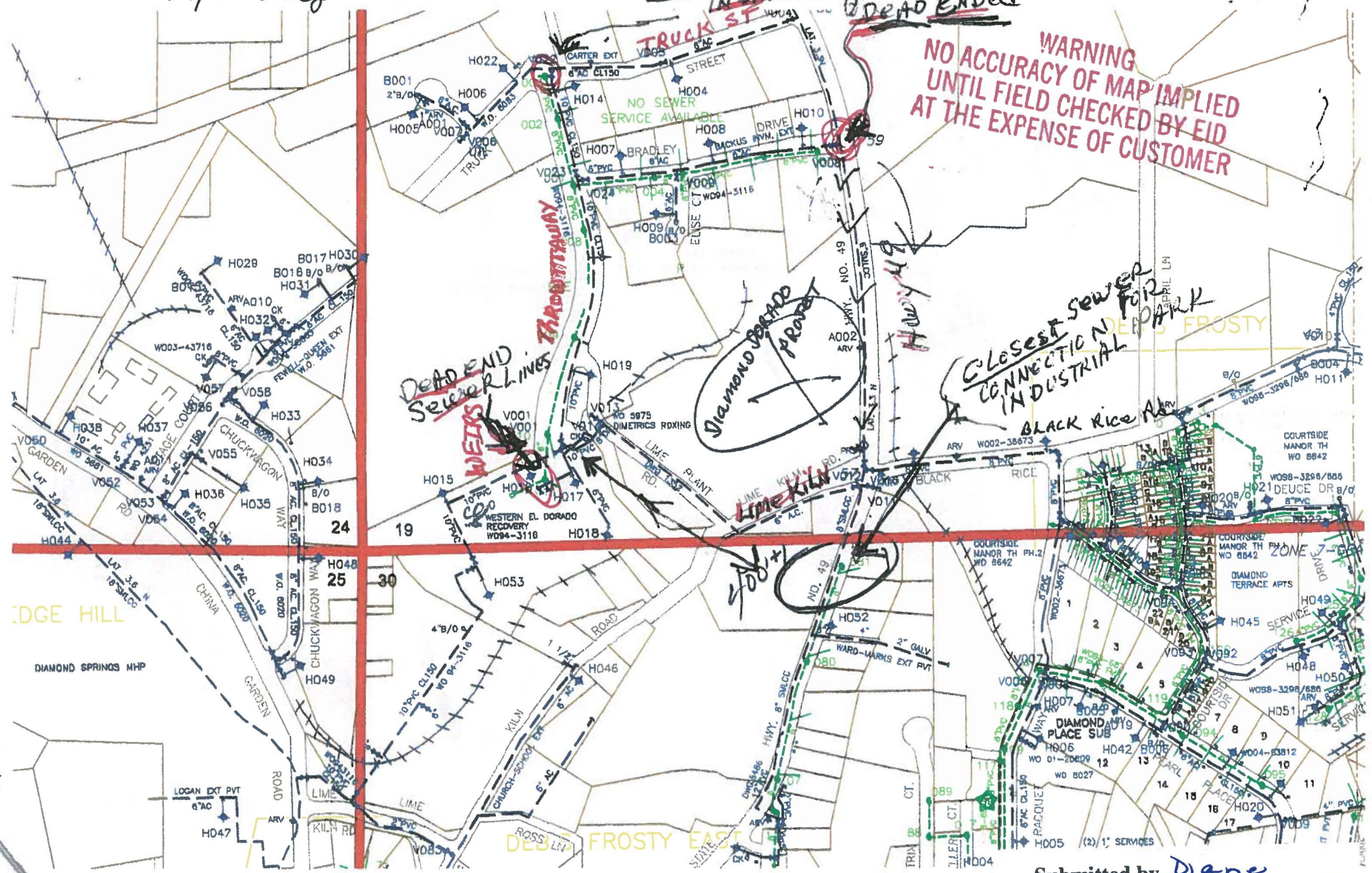


Area is included in Project VEIR Study Area
GENERAL PLAN 5.3.1.1. Requires Sewer
D.S./EL 00. Region 7

* D.S. SWR ~~0.000~~ E.I.D
+ 875 / per edge



WARNING
NO ACCURACY OF MAP IMPLIED
UNTIL FIELD CHECKED BY EID
AT THE EXPENSE OF CUSTOMER

DEAD END
SEWER LINES
WELLS

DIAMOND SPRINGS
PROJECT

Closest sewer
CONNECTION
IN INDUSTRIAL
PARK

Submitted by Diane
morillo
at Board Hearing of 12/18/12
#57 12-1540 A 1 of 1

V LIT 21-01