

**DIAMOND SPRINGS PARKWAY
PUBLIC INFORMATION MEETING
Monday, March 18, 2013
6:30 to 8:00 p.m.**

**El Dorado County
Board of Supervisors Meeting Room
330 Fair Lane, Building A, Placerville**

Please join County staff for an informational presentation and discussion on this roadway improvement project. This project is included in the El Dorado County Department of Transportation Adopted 2012 Capital Improvement Program.

Hosted by the
El Dorado County Community Development Agency
Transportation Division



**For more information, call (530) 621-5900
or email anne.novotny@edcgov.us**



DIAMOND SPRINGS PARKWAY / SR-49 REALIGNMENT

Project Fact Sheet

Project Overview

Diamond Springs Parkway is a future four-lane, divided roadway connecting Missouri Flat Road to State Route 49 (SR-49). The conceptual alignment was adopted by the Board in June 1997. A Notice to Proceed with the Environmental Impact Report (EIR) was issued in January 2008 and the final EIR was approved by the Board in May 2011. The project is identified in the County 2004 General Plan (Table TC-1) and Circulation Map, as well as the County Department of Transportation Adopted 2012 Capital Improvement Program (CIP).

Purpose and Need

The primary purpose of this project is to improve traffic safety and operations on SR-49 in the vicinity of Diamond Springs. The project will improve safety on Diamond Road/SR-49 by reducing residential driveway access with the provision of a new frontage road. The project will provide parallel connection from SR-49 to US-50 between Missouri Flat Road and Diamond Road. These improvements will relieve traffic congestion and provide an acceptable level of service through the historic town of Diamond Springs consistent with the County General Plan.

Project Completed in Phases

The Project is being completed in phases: Phases 1A, 1B, 2 and 3. **Phase 1A** will realign SR-49 from Pleasant Valley Road to north of Lime Kiln Road, with construction of two 12-foot lanes and 8-foot shoulders. This phase also includes a new turn lane and signal modifications at Pleasant Valley Road and SR-49, and a left turn lane and improvements to the Lime Kiln/Black Rice intersection.

Phase 1B will construct a new 2-lane minor arterial from Missouri Flat Road east of Golden Center Drive to a new T-intersection with SR-49 south of Bradley Drive. This phase includes new signals at Missouri Flat Road, Throwita Way and Diamond Road/SR-49. This phase also includes a new parking area for the El Dorado Trail on the northwest corner of the Parkway intersection at Missouri Flat Road. The new parking area will have approximately 25 spaces and will replace the existing 15 parking spaces at the trailhead. Phase 1B also includes right-of-way and grading for Phase 2.

Phase 2 includes additional turn lane capacity and connects the intersections constructed in prior phases to create a continuous 4-lane roadway on the Parkway segment. It also includes pedestrian and bicycle access: sidewalk and Class II bike lanes along both sides of the Parkway from Missouri Flat Rd to Diamond Road, sidewalk on Diamond Road from the Parkway to Pleasant Valley Road. A Class I bike path will also be added on the south side of the Parkway, west of the intersection with Missouri Flat Road connecting to the El Dorado Trail. Three bus turnouts will be constructed in either Phase 1B or Phase 2: two on the Parkway at Throwita intersection (NW and SE corners), and one on the east side of Diamond Road/SR-49 just north of Lime Kiln. Future **Phase 3** will widen the SR-49 segment to 4-lanes.

Project Cost & Anticipated Completion

Phase 1A	\$ 6 million	2014
Phase 1B	\$24 million	2023
Phase 2 (DSP)	\$ 1.5 million	2030
Phase 3 (SR49)	\$ 2 million	TBD

Funding

This project is funded by 2004 General Plan Traffic Impact Mitigation (TIM) Fees, the Missouri Flat Master Circulation & Funding Plan (MC&FP), and State-Local Partnership Program (SLPP).

Public Outreach / Meetings, 1996 – 2011

Initial public meetings in 1996	9/19 & 10/2
Preferred Alignment Selected	4/10/97
Alignment Approved – BOS meeting	6/17/97
Public Workshop	Spring 2005
EIR Scoping Meeting	1/9/08
"T" Alignment Study – BOS meeting	4/29/08
Diamond Springs Advisory Committee	2/18/10
EIR public meeting	7/28/10
Final EIR Certification – BOS meeting	5/24/11

Questions or comments regarding the Diamond Springs Parkway/SR-49 Realignment project, visit the project website at:

<http://www.edcgov.us/diamondspringspkwy/>

The El Dorado County Department of Transportation 2012 CIP is available online on the El Dorado County website at: www.edcgov.us/Government/DOT/CIP.aspx



Diamond Springs Parkway Project

Public Information Meeting, Monday, March 18, 2013
330 Fair Lane, Building A, Placerville
County Board of Supervisors Meeting Room, 6:30 – 8:00 p.m.

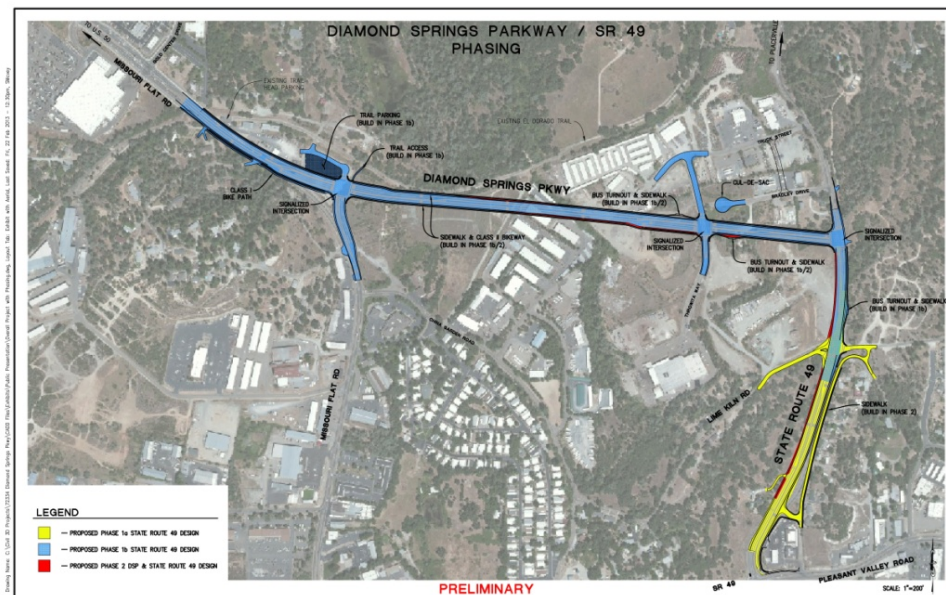
PRESENTED BY:

County of El Dorado
Community Development Agency
Transportation Division

Matthew Smeltzer, P.E.
Deputy Director of Engineering

Paul Hom, P.E.
Senior Civil Engineer

Anne Novotny
Senior Planner





Meeting Purpose & Agenda

Provide information about the Diamond Springs Parkway / State Route 49 Realignment Project

1. Project Overview and Benefits
2. Project Phases / Cost / Schedule and Funding
3. Background / Timeline / Current Project Status
4. Parallel Community Planning Efforts
5. Opportunities for Aesthetic Enhancements
6. Questions



Project Overview

Diamond Springs Parkway/SR49 Realignment Project is a future 4-lane divided roadway connecting Missouri Flat Road to SR-49/Pleasant Valley Road that will be built in several phases.

- Provides parallel connection from SR-49 to Hwy 50
- Realignment SR-49 from Pleasant Valley Road to Lime Kiln
- Creates new minor arterial from SR-49 south of Bradley Drive to Missouri Flat Road



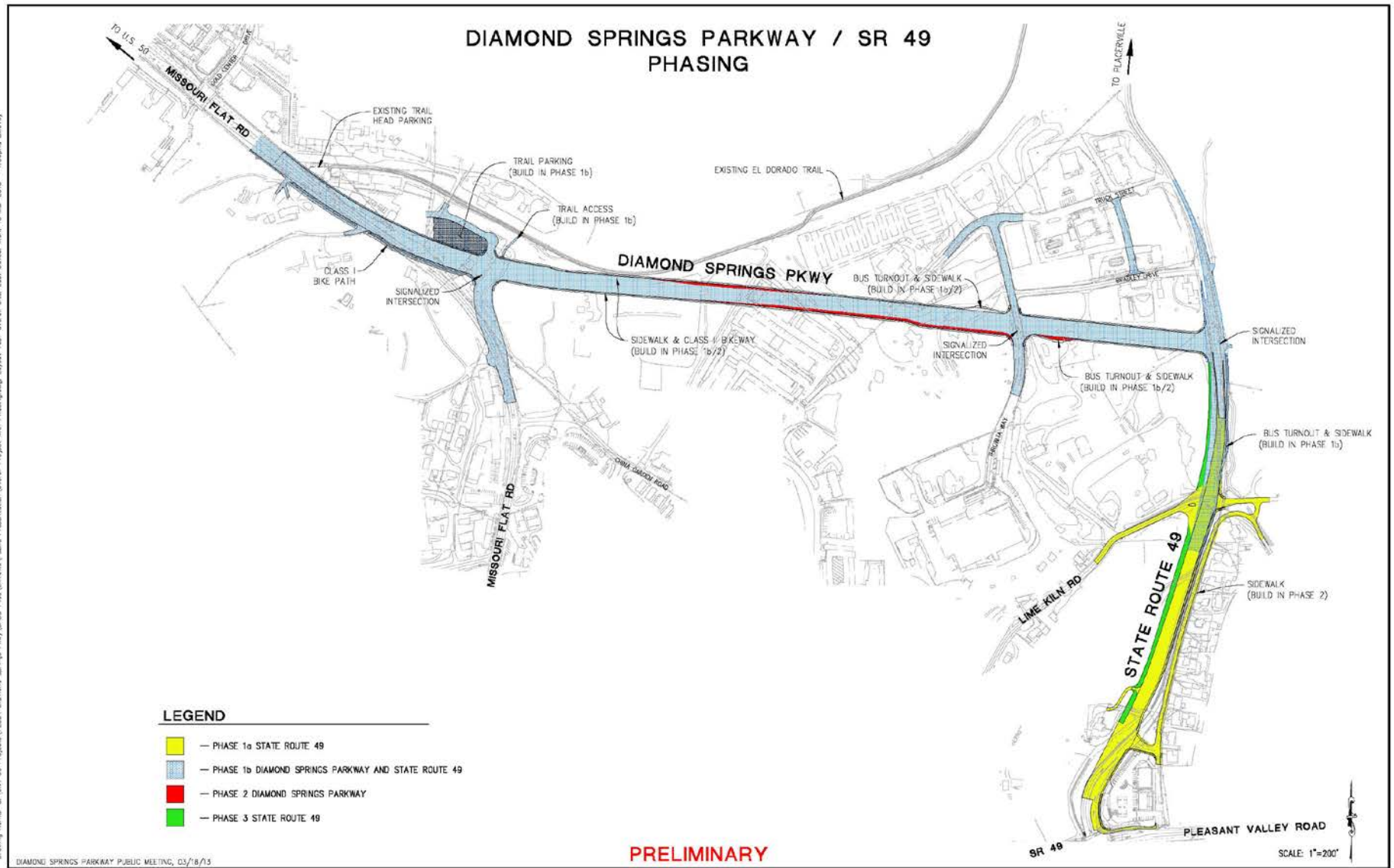
Project Benefits

- Meets operational goal of rerouting high volume of traffic around Main Street in Diamond Springs
- Improves level of service on Main Street
- Minimal impact on existing developed property
- Moves SR-49 away from existing residences
- Multi-modal improvements (sidewalk, bike lanes, bus turnouts)



Project Phases

- **Phase 1a** – CIP Project No. 72375
SR-49 Realignment - Pleasant Valley Road to Lime Kiln
- **Phase 1B** – CIP Project No. 72334
New 2-lane roadway connecting Missouri Flat Rd to SR-49
- **Phase 2** – CIP Project No. 72368
Ultimate widening/improvements for 4-lane divided Parkway
- **Phase 3** – Future (Un-programmed)
Ultimate widening/improvements for 4-lane divided SR-49





Estimated Project Cost & Schedule

Phase	Road Segment	Estimated Cost	Estimated Completion Year
1A	SR-49	\$6 million	2014
1B	DSP	\$24 million	2023
2	DSP	\$1.5 million	2030
3	SR-49	\$2 million	TBD



Project Funding

Current Funding Sources:

- 2004 General Plan Traffic Impact Mitigation (TIM) Fees
- Missouri Flat Master Circulation & Funding Plan (MC&FP)
- State-Local Partnership Program (SLPP), Caltrans

Proposed Additional Funding:

- County continuously seeking funding for this project including potential utilization of local tribe funds to advance project for earlier completion



Project Background / Timeline

This project has been in the works for nearly 17 years, with at least 12 public forums for community input.

April 1996	Missouri Flat/Pleasant Valley Rd Connector project included in DOT 20-Year CIP
Fall 1996	Two meetings for public input on potential routes
April 1997	Public meeting held to present potential alignments; community preferred Alternative No. 3 (out of six options)
June 1997	Board approved Alternative No. 3 as preferred route, under condition of Caltrans approval
April 1998	Project included in the MC&FP
2000	Project analyzed in MC&FP EIR



Project Background / Timeline

2004	Project included in County General Plan
2004	Preliminary engineering begins
2005	Public meeting discussed Alt No. 4 - "T" Alignment
2005	Consultant hired to analyze Alternatives 3 and 4
Dec 2007	Notice of Preparation for EIR distributed for 30-day public review (direct mail, County website, Mt Democrat)
Jan 2008	EIR public scoping meeting
Apr 2008	Board approved "T" Alignment as new preferred alignment
Jun 2010	Draft EIR distributed for public review (6/23 – 8/23)
July 2010	EIR public meeting (7/28/10)
May 2011	Public hearing - Final EIR certified and Board approved



Other DS&ED Community Planning Efforts

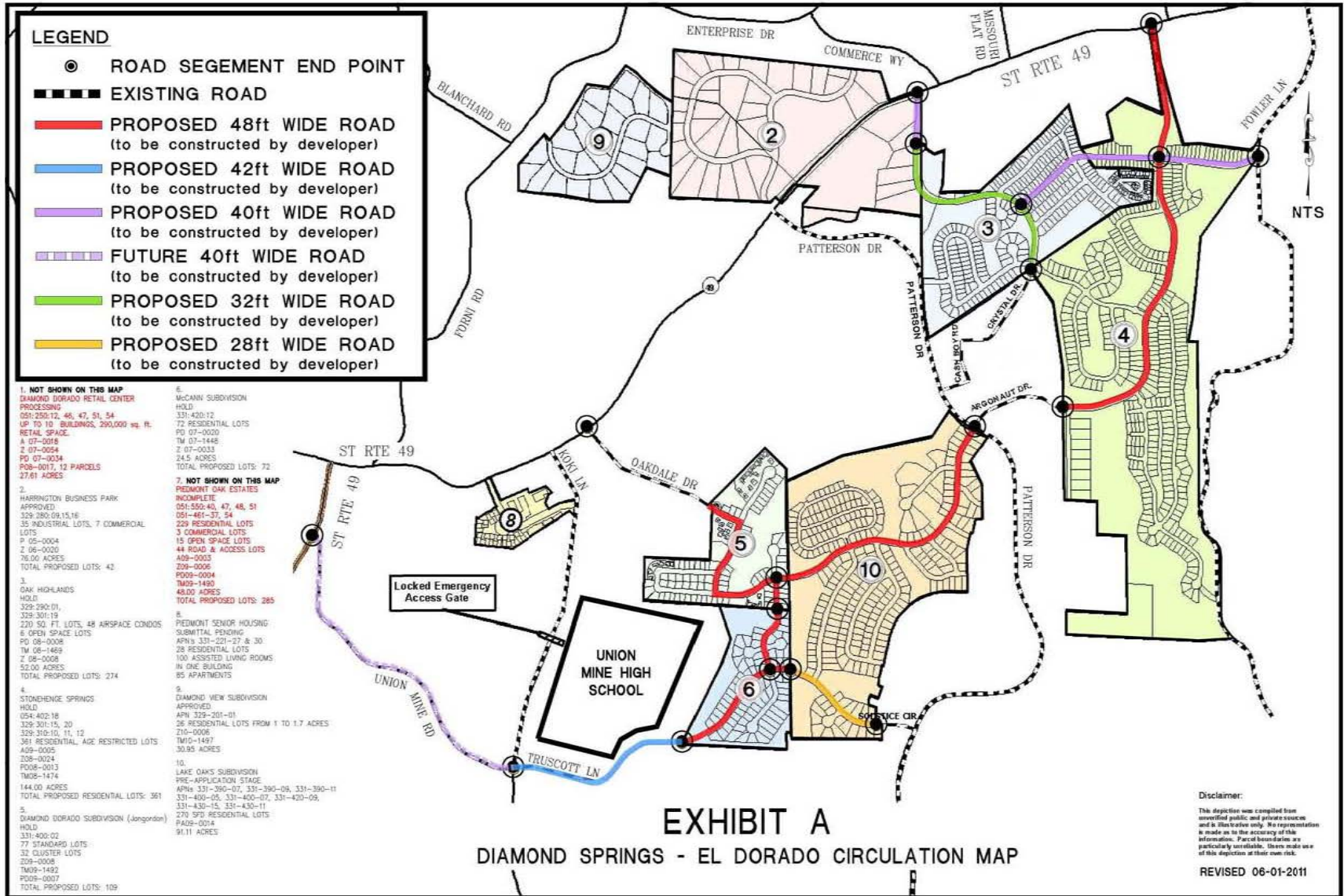
El Dorado County Transportation Commission

- Diamond Springs and El Dorado Area Mobility and Sustainable Community Vision Project - Completed 2011
http://www.edctc.org/EDCTC-3/3/DS-ED_Vision.htm
- Diamond Springs and El Dorado Area Mobility and Livable Community Plan - in process
http://www.edctc.org/EDCTC-3/3/DS-ED_Plan.html

For more information, call EDCTC at (530) 642-5260



Diamond Springs – El Dorado Circulation Map





Current Project Status

- Phase 1A at 65% Design
- Coordination with Caltrans and Utilities on SR-49 segment on final details to start ROW acquisition
- Starting work on establishing Underground Utility District (3-5 year process)
- Phase 1B & 2 at 30% Design
- Conceptual aesthetic treatments



County Welcomes Input on Aesthetic Enhancements

- Project funding for safety lighting at signalized intersections
- No funding for decorative lighting and landscaping
- County welcomes public input on aesthetic ideas and funding options
- Coordination through Diamond Springs and El Dorado Community Advisory Committee
- Recognize and review Missouri Flat Design Guidelines



Aesthetic Opportunities

- Decorative lighting - (may be similar to lighting on Missouri Flat Road by US50)
- Medians - (stamped concrete, low maintenance or Xeriscape landscaping, railroad/Gold Rush theme)
- Retaining walls
- Landscaping along sidewalk edge & fencing on SR-49
- Parking area for El Dorado Trail
- Class I bike path to connect to future trail extension

Missouri Flat Road Aesthetic Treatments



Top – painted faux rock overpass
Left – decorative street lamps

Enhanced Crosswalk/Street Lighting Example

R Street in Downtown
Sacramento - Before (right)
After (below)



Photos Courtesy of Mark Thomas & Co.

Photo Simulation – Live Oak Blvd., Live Oak, CA



Photo Simulation courtesy of Urban Advantage, www.urban-advantage.com

Photo Simulation – Live Oak Blvd., Live Oak, CA



Photo Simulation courtesy of Urban Advantage, www.urban-advantage.com



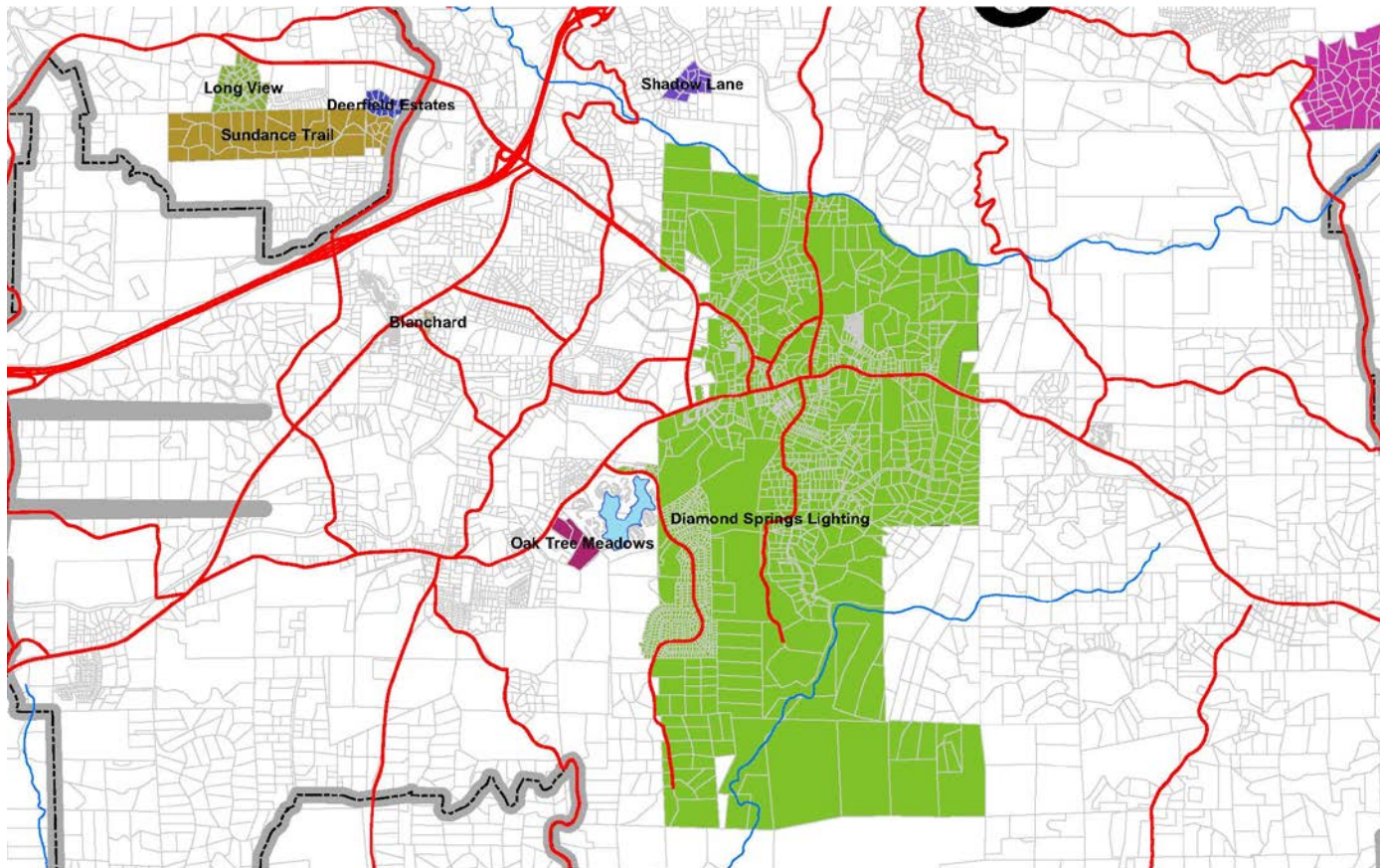
Aesthetic Enhancements

Potential Funding Sources

- Expand Diamond Springs Lighting District or create new Lighting & Landscaping District
- Zone of Benefit
- Sponsorships (i.e. “Adopt A Highway”)
- Conservation Easements (with adjacent property owners)
- Developer Conditions for landscaping
- Grants



Diamond Springs Lighting District





Diamond Springs and El Dorado Community Advisory Committee

- Established by BOS adopted resolution (No. 235-2009) on October 20, 2009
- Committee Purpose: to advise the County regarding development activity within the designated community and other issues within the designated region
- Comprised of seven members who are residents within the DS&ED community region; serve 4 year terms without compensation



Diamond Springs and El Dorado Community Advisory Committee

- Monthly meetings typically held on third Thursday at 6:00 pm at Diamond Springs Fire Station, 501 Main St.
- Next meeting this Thursday, March 21st
- Agendas & Minutes posted on County website
- Subscription option available to receive agendas & minutes by email
- For more information, visit the website:
http://www.edcgov.us/Government/Planning/Diamond_Springs_and_El_Dorado_Community_Advisory_Committee.aspx
- Email: Kathy McCoy at kathy@mccoypartners.com



Additional Information Available

Environmental Documents

<http://www.edcgov.us/Government/DOT/CEQA.aspx>

Department of Transportation Capital Improvement Program

<http://www.edcgov.us/Government/DOT/CIP.aspx>

County General Plan

http://www.edcgov.us/Government/Planning/Adopted_General_Plan.aspx

Missouri Flat Corridor Design Guidelines

http://www.edcgov.us/Government/Planning/Missouri_Flat_Design_Guidelines.aspx



Project Questions ???

Website: <http://www.edcgov.us/diamondspringspkwy/>

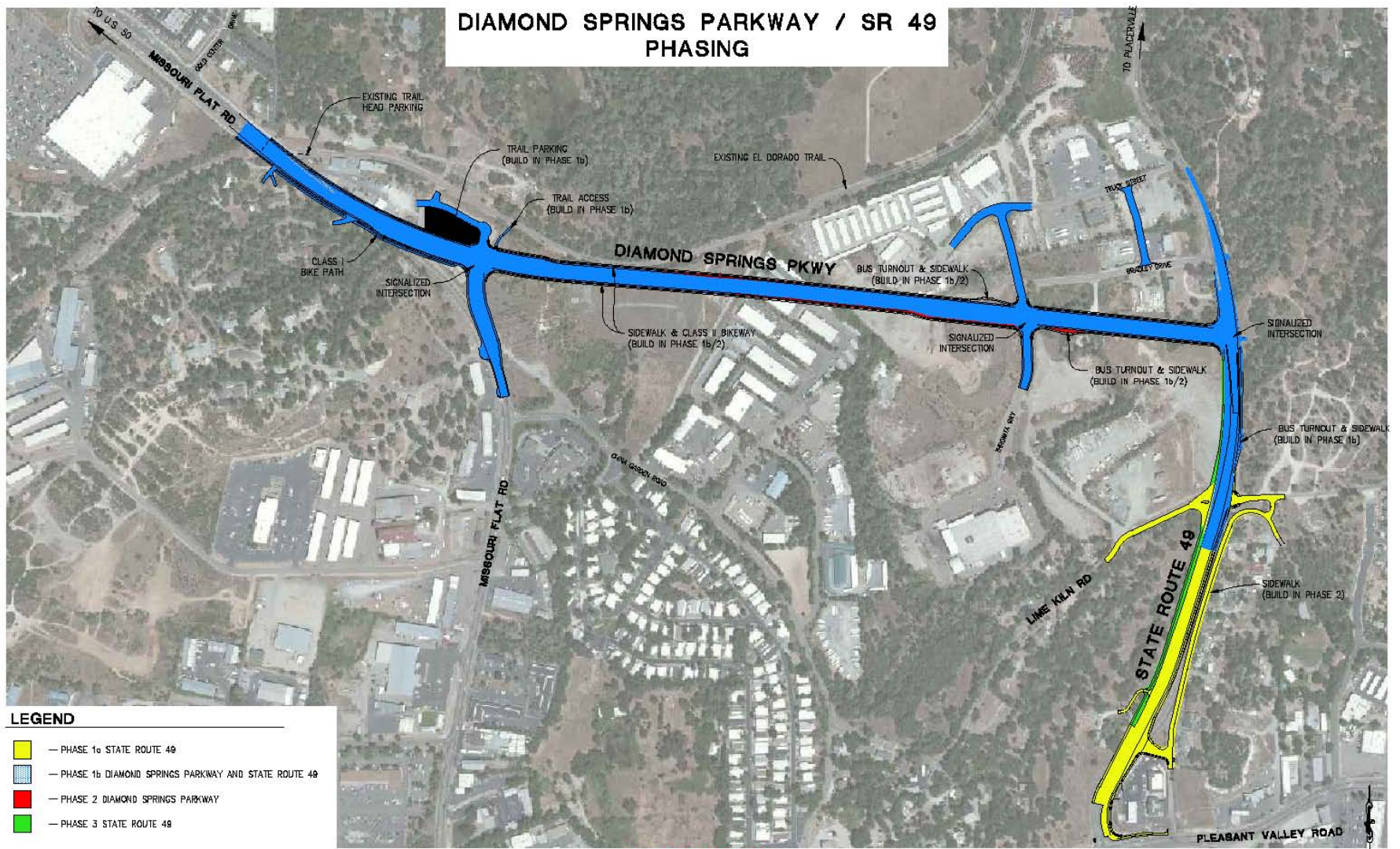
Email: **diamondspringspkwy@edcgov.us**

Phone: **(530) 621-5900**

Community Development Agency
Transportation Division

***Thank you for attending this meeting.
Your input is important to us.***

DIAMOND SPRINGS PARKWAY / SR 49 PHASING

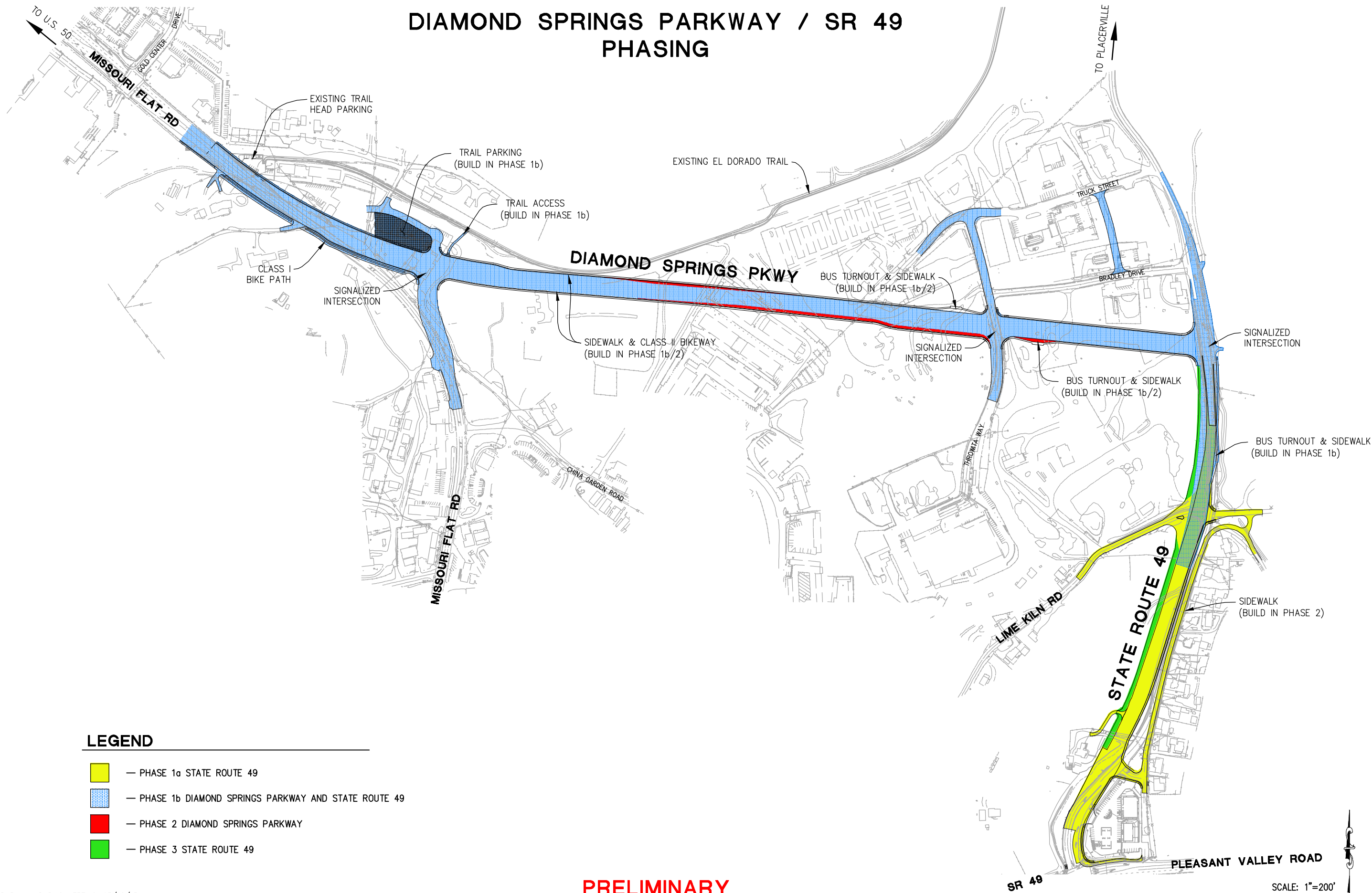


PRELIMINARY

DIAMOND SPRINGS PARKWAY PUBLIC MEETING, 03/18/13

Drawing Name: C:\Civil 3D Projects\72334 Diamond Springs Pkwy\CADD Files\Exhibits\Public Presentation\Overall Project with Phasing.dwg, Layout Tab: Overall Site, Last Saved: Mon, 18 Mar 2013 - 1:36pm, SMCVey

DIAMOND SPRINGS PARKWAY / SR 49 PHASING



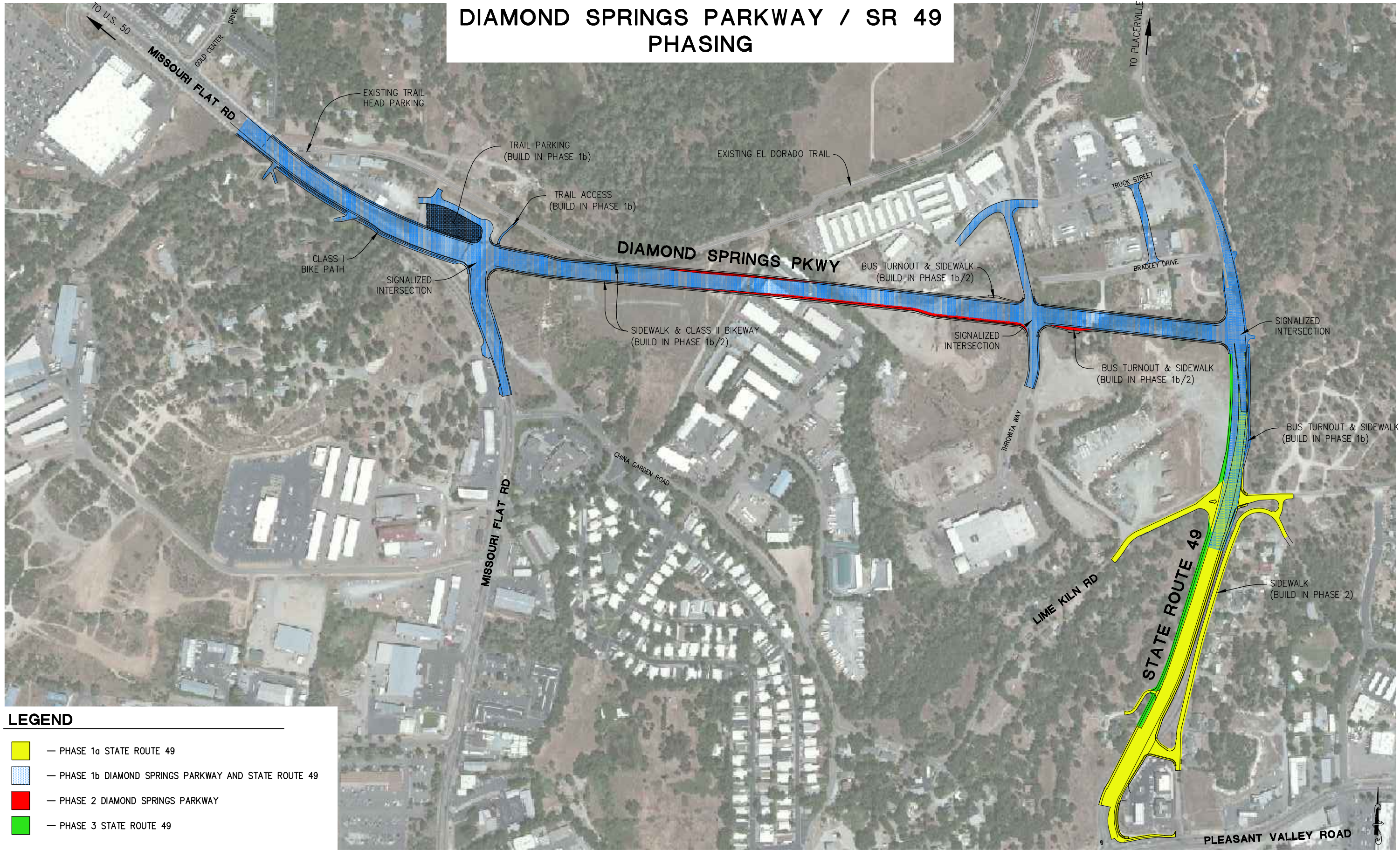
LEGEND

- PHASE 1a STATE ROUTE 49
- PHASE 1b DIAMOND SPRINGS PARKWAY AND STATE ROUTE 49
- PHASE 2 DIAMOND SPRINGS PARKWAY
- PHASE 3 STATE ROUTE 49

PRELIMINARY

Drawing Name: C:\Civil 3D Projects\72334 Diamond Springs Pkwy\CADD Files\Exhibits\Public Presentation\Overall Project with Phasing.dwg, Layout Tab: Overall Site with Aerial, Last Saved: Mon, 18 Mar 2013 - 1:36pm, SMC\ey

DIAMOND SPRINGS PARKWAY / SR 49 PHASING



LEGEND

— PHASE 1a STATE ROUTE 49

— PHASE 1b DIAMOND SPRINGS PARKWAY AND STATE ROUTE 49

— PHASE 2 DIAMOND SPRINGS PARKWAY

— PHASE 3 STATE ROUTE 49

PRELIMINARY

SCALE: 1"=200'