

PLANT LEGEND

ABBR.	BOTANICAL NAME	COMMON NAME	QTY.	SIZE	COMMENTS
TREES					
P	<i>Populus tremuloides</i>	Aspen	2"	3" Cal.	5' x 5' Stem
Sp	<i>Sabina californica</i>	Mountain Ash	2"	Gal.	Tree Form
SHRUBS					
Aa	<i>Amelanchier alnifolia</i>	Western Serviceberry	16	5 Gal.	
Ca	<i>Calluna vulgaris</i>	Karl Forester's Feather River Grass	3	5 Gal.	
Cs	<i>Cornus sericea</i>	Redstem Dogwood	12	5 Gal.	
Hs	<i>Helleborus scaber</i>	Blue Hill Grass	21	5 Gal.	
Pl	<i>Potentilla fruticosa</i>	Strubby cinquefoil	11	5 Gal.	
R	<i>Ribes nevadense</i>	Mountain Currant	45	1 Gal.	
Re	<i>Rosa woodsii</i>	Woods Rose	26	5 Gal.	
Sj	<i>Spirea alba</i>	Mountain Spirea	30	5 Gal.	

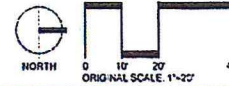
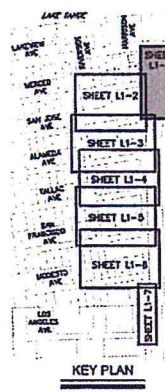
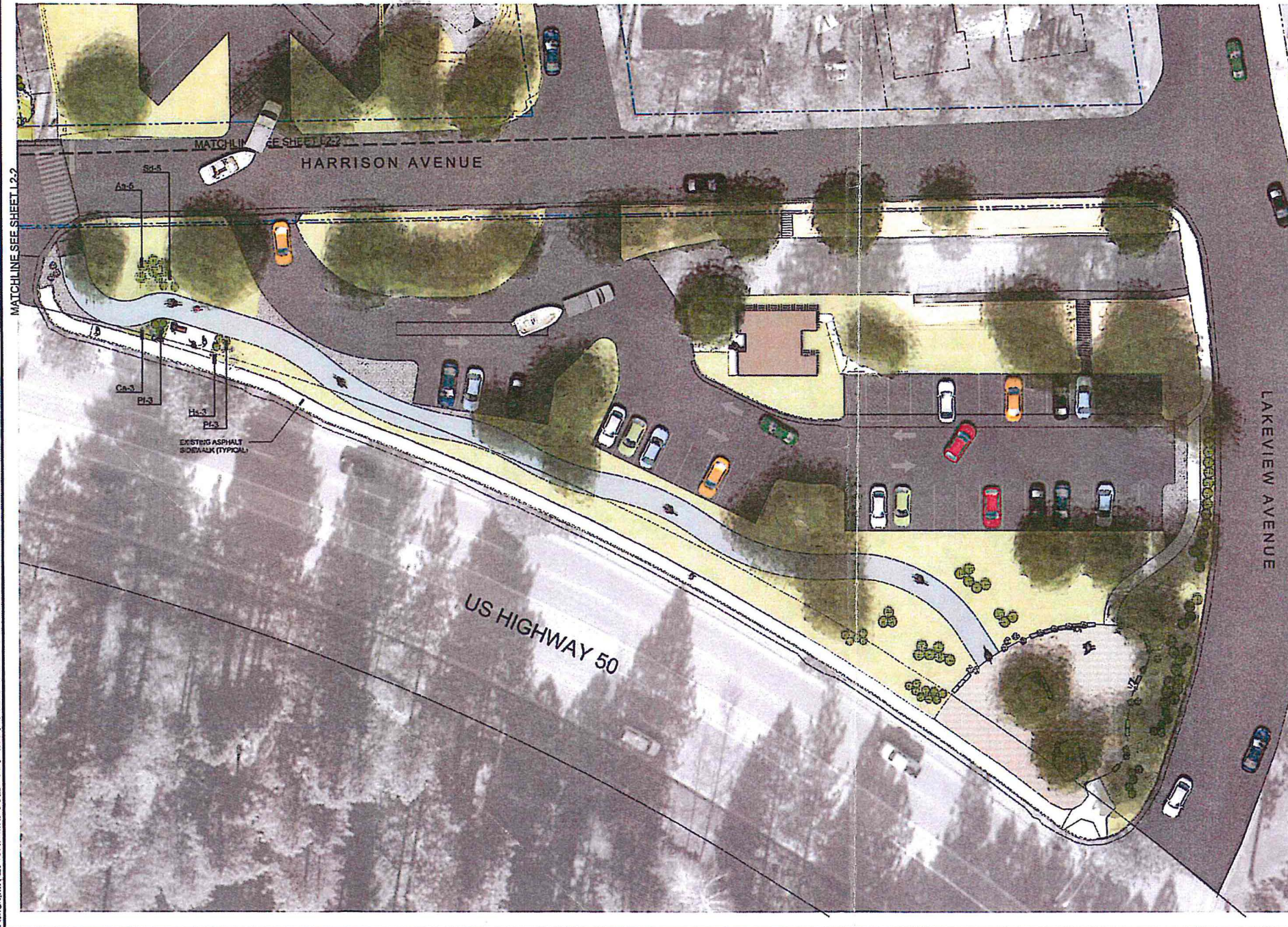
ABBR.	BOTANICAL NAME	COMMON NAME	QTY.	SIZE	SPACING
PERENNIALS					
Am	<i>Arnica montana</i>	Yarrow	1 gal.	-	-
Co	<i>Columbinella</i>	Columbine	1 gal.	-	-
Lp	<i>Lupinus polyphloeus</i>	Large Leaved Lupine	1 gal.	-	-
Ls	<i>Leucanthemum x superbum</i>	Shasta Daisy	1 gal.	-	-
Pn	<i>Penstemon newberryi</i>	Penstemon, Mountain Pinks	1 gal.	-	-
GROUNDCOVERS					
Fv	<i>Fragaria virginiana</i>	Mountain Strawberry	1 gal.	-	-
Go	<i>Galenium odoratum</i>	Sweet Woodruff	1 gal.	-	-
Rz	<i>Rubus parviflorus</i>	Thimbleberry	1 gal.	-	-
Total Groundcover: 1327 sq ft					
Total Revegetation: 6417 sq ft					

REVEGETATION NOTES

- All areas disturbed by construction activities shall be revegetated if not shown improved with weathered material. Areas of revegetation may be required beyond what is shown on plans.
- A minimum of two inches (2") of topsoil shall be placed on all disturbed areas. Topsoil shall include all of the organic-rich layer of soil immediately under the soil layer. Topsoil shall be stored with minimal handling and no compaction, and it shall not be mixed with spoil material.
- Disturbed areas shall be compacted or have a minimum of two inches (2") of topsoil placed on top. Soil may be loosened with a backhoe bucket equipped with cutting teeth if loosening a dirt such that it does not erode and soil is not pulverized or overworked. Following soil loosening, all further equipment traffic shall be restricted from the planting area.
- Areas shall be irrigated by a low-flow drip system approximately once every three (3) weeks. The goal for all revegetated areas is to increase vegetation density and decrease the need for irrigation after a minimum of three (3) growing seasons.
- Following seeding and planting, all revegetation areas shall be mulched with pine needles. Pine needles shall be applied evenly to the entire area to a depth of one inch (1") if applied by blower or two inches (2") if applied by hand.

LANDSCAPE PLANTING NOTES

- Refer to Civil plans for site layout, drainage, final grading and utilities. Information shown on Civil plans shall take precedence over landscape plans.
- Exact locations of plant materials to be approved by the Owner's Representative in the field prior to installation. Owner's Representative reserves the right to adjust plants to exact location in field.
- Verify plant counts and square footages. Quantities are provided as Owner's information only, if quantities on plan list differ from graphic indications, then graphics shall prevail.
- Contact the local underground utility services for utility location and identification.
- Perform excavation in the vicinity of underground utilities with care and if necessary, by hand. The Contractor bears full responsibility for the work and damage to utilities shall be repaired immediately at no expense to the Owner.
- Trees shall bear same relation to finished grade as it bore to existing.
- Trees to be planted a minimum of 6 feet from face of building, or pavement, except as approved by Owner's Representative.
- All vegetation shall be consistent with the requirements of Chapter 30, Chapter 65.8, and Chapter 74.2 of the TRPA Code of Ordinances, see plant list for variety and spacing. All plants specified are from the USDA approved plant lists as described in Table 1 and Table 2 of the Home Landscaping Guide for Lake Tahoe and Valley.
- Landscape maintenance and management plan shall be consistent with Chapter 12 of the TRPA Home Landscaping Guide for Lake Tahoe and Valley along with City of South Lake Tahoe Standards. This includes irrigation to establish at plant material and fertilizer schedule.
- All areas disturbed by construction shall be revegetated in accordance with the TRPA Handbook of Best Management Practices and Living with Fire, Lake Tahoe Basin, Second Edition.
- Dist control measures shall be in place during construction. Broadcast mulch shall not be permitted as a dust control measure within 35 feet of structures.
- Fencing, bollards and barriers as shown on the plan shall be in place to restrict parking to approved parking surfaces only.



PRELIMINARY
For Review Only

DESIGNWORKSHOP Landscape Architecture 1201 W. 10th Street, Suite 200 South Lake Tahoe, CA 96150 Phone: (775) 338-1155 Fax: (775) 338-1156	NO. _____ DATE _____	BY _____ REVISION BLOCK
	HARRISON AVENUE STREETScape SOUTH LAKE TAHOE LANDSCAPE PLANTING PLAN	CALIFORNIA
JOB: 072 4829 SHEET:	L2-1	OF: SHEET

2 →