

K. Payne

2-11-14 Open Forum

Mike's Signs Gmail

Fri, Feb 7 10:39 AM

to Al Stoll; Hal Hall; Rodi Lee; Karri Samson; otten@ssctv.net; Kris Payne; tim Twietmeyer; David Allen; Mike Picket; Gary Estes; Eric Peach; Neil Moore; Melanie Barton; Gary Hughes; Jim LoBue; Linda Lobue; Mike Holmes; Jennifer Montgomery; jerry pozo; Ron Ludford; Terry Cook; April; John Barnhill

MQRR BRIDGE approved as California Historical Landmark

Howdy

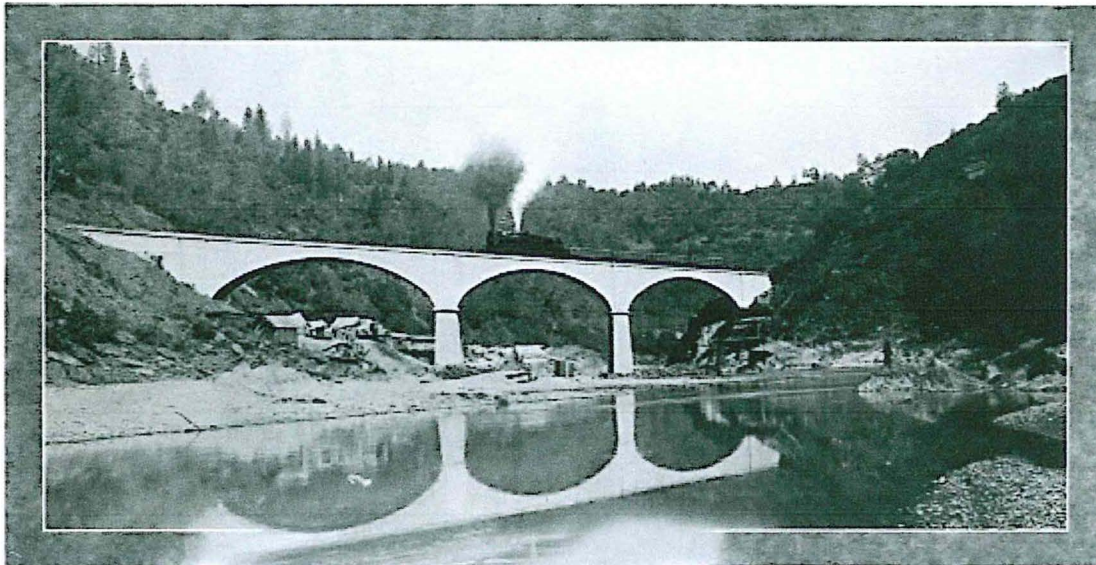
MQRR Bridge was approved today as a California Historical Landmark (CHL) by the Historic Resources Commission.

We are tentatively scheduling the CHL plaque dedication on March 23rd at 1pm on the El Dorado County side of the bridge. More details to follow.

Thanks for everyone's support.

Mike Lynch

THE CONCRETE BRIDGE



A 45 degree skew bridge, the railroad meeting each end on a 16 degree curve. Built on solid rock and carrying the heaviest locomotives hauling cars heavily laden with limestone

American River Bridge
Near Auburn
Placer County, California
THREE 140 FOOT CLEAR SPANS
LENGTH OVER ALL 652 FEET
BUILT 1911

COUNTY OF EL DORADO

330 Fair Lane
Placerville, CA 95667
(530) 621-5390
(530) 622-3645 Fax

JAMES S. MITRISIN
Clerk of the Board



BOARD OF SUPERVISORS

RON MIKULACO
District I
RAY NUTTING
District II
BRIAN K. VEERKAMP
District III
RON BRIGGS
District IV
NORMA SANTIAGO
District V

December 10, 2013

Ms. Carol Roland-Nawi
State Historic Preservation Officer
California State Parks,
Office of Historic Preservation
1725 23rd Street, Suite 100
Sacramento, CA 95816-7100

**RE: Support - Mountain Quarries Railroad Bridge
California Historical Landmark Designation**

Dear Ms. Roland-Nawi,

The County of El Dorado Board of Supervisors is in full support of the application to designate the Mountain Quarries Railroad Bridge as a California Historical Landmark. The Mountain Quarries Railroad Bridge, or the "No Hands Bridge" as it is commonly called, has contributed significantly to our county as an economic, transportation, and recreation resource for over 100 years.

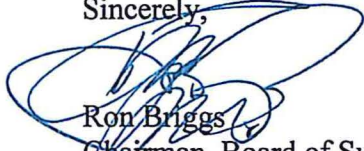
Beginning with the completion of its construction in 1912, the Bridge provided for the transport of limestone rock across the American River Canyon from a quarry in Cool to the Southern Pacific main rail line in Auburn. For three decades trains steadily crossed the canyon, gradually creating then supporting employment and economic opportunity for the entire region. The 1940's saw the removal of the Mountain Quarries Railroad's trestles and lines of track for use as scrap metal to assist in our nation's efforts during World War II, yet the bridge stood strong, withstanding over 80 years of river current and numerous floods that have destroyed other, more modern, bridges along the American River.

In 1964, the Bridge once again served the Counties of El Dorado and Placer after the Hell Hole Dam broke and destroyed a highway bridge that connected the two counties. The Mountain Quarries Railroad Bridge was returned to service to restore vehicle traffic between the two counties until a replacement bridge could be constructed. Today, the Bridge serves as the final crossing of the American River for the Western States 100-Mile Endurance Run and the Tevis Cup 100-Mile Ride.

Ms. Carol Roland-Nawi
December 10, 2013
Page 2

The Mountain Quarries Railroad Bridge was placed on the Register of National Historic Places in 2004. Our Board believes that the Mountain Quarries Railroad Bridge is worthy of your consideration for designation as a California Historical Landmark due to its continued economic, transportation, historic and recreation contributions to the County of El Dorado and the State of California. The Bridge is a landmark and serves as a proud testament to early-day engineering and construction, as well as the pioneering spirit and resolve that continue to define our County. We applaud the Placer County Historical Foundation for leading the effort to seek this designation and join them in offering our support.

Sincerely,

A handwritten signature in blue ink, appearing to read "Ron Briggs", is written over a circular stamp or seal. The signature is somewhat stylized and overlaps the text of the name below it.

Ron Briggs
Chairman, Board of Supervisors
County of El Dorado

cc: Mr. William Burg

8. [13-0984](#) Library Department recommending the Board authorize the Chair to:
1) Sign Agreement for Services 178-S1411 with SirsiDynix in the amount of \$268,444 for the term of January 1, 2014 through December 31, 2018 to provide a library integrated software system, including circulation, cataloging, acquisitions and public catalog; and
2) Sign a Budget Transfer increasing the Library budget by \$27,600 for same. (4/5 vote required)

FUNDING: General Fund and Library Taxes.

This matter was Approved on Consent Calendar 1.

9. [13-1506](#) Supervisor Briggs recommending the Board approve the Chair's signature on a letter of support for the application to designate the Mountain Quarries Railroad Bridge as a California Historical Landmark.

This matter was Approved on Consent Calendar 1.

10. [13-1520](#) Supervisor Briggs requests the Board approve ratification of the Chair's signature on a letter presented to Deputy Chief Probation Officer Vince Janette in recognition of his service as Acting Chief Probation Officer for the County of El Dorado.

This matter was Approved on Consent Calendar 1.

S. Taylor

2-11-14 Open Forum

To the Board of Supervisors
of El Dorado County California

Feb. 11, 2014

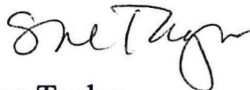
Pursuant to the California Public Records Act, I am requesting the following:

A copy of the letter from the California Courts Commission to the County regarding a letter they received from a "Group of Taxpayers" expressing their concern about the apparent conflicts of interest between Supervisor Briggs and the property the County was going to purchase in connection with its plan to a new Court House

A copy of the letter from the County to the Commission responding to their questions

A copy of the letter of determination from the Commission regarding the property

Thank you,



Sue Taylor
P. O. Box 961
Camino, Calif.

1. WHY is the Coloma Resort not held to the same government laws, codes, statutes & ordinances as anyone else?
2. WHY is the MGD Park & Chamber of Commerce given preferential treatment over the residents who are most adversely affected over the Mt. Murphy Bridge project?
3. WHAT is the emergency evacuation plan for residents landlocked by this CIP?
4. WHY has the county remained silent about easements “given away” as mentioned last year by Jack Sweeney?
5. WHY has Ron Mikulako’s name & photo been plastered on this bridge project?
6. WHY has Kim Kerr not responded yet to inquiries made over 2 years ago regarding this CIP?
7. WHY has the BOS allowed former county employee Kris Payne to exceed his limits and given his opinions greater consideration than the residents affected by the bridge projects?
8. WHEN will Mt. Murphy Road be properly maintained by DOT?
9. WHEN can residents commence DIALOG about this bridge project?
10. WHEN can we expect the 5/15/12 Agenda 21 Resolution to appear on the BOS agenda?
11. WHEN can we expect Supervisor Briggs to respond to District #4 constituents instead of giving preferential favors to his friends like Bill Center?

Madam Chair, with all due respect, the Board has a fiduciary DUTY to address citizen concerns. To remain silent is to commit FRAUD in addition to violating your oath of office. So when DOES the public get the opportunity to address the BOS and WHEN exactly can we expect staff to respond to the aforementioned questions?

Mr./Madam Clerk: I order you to enter these materials into the public record and post them to the Mt. Murphy Bridge Project:

1. This transcript (5 min. 5 sec.)
2. 2/4/14 transcript - Mt. Murphy Bridge
3. 4/3/13 Matt Green, CA State Parks letter
4. 5/15/12 Agenda 21 Resolution
5. **CPRA – Employees covered under CSAC Bonding Ins.**

By now you are aware that one of the guiding principles of Compass2Truth is based on Ephesians 5:11 – ***“Take no part in the worthless deeds of evil and darkness; instead expose them.”*** My purpose today is to address item #24 on last week’s agenda, the historic Mt. Murphy Bridge Project.

Freedom is expressly guaranteed by the First Amendment of the Constitution. This freedom is supposed to be used to expose government propaganda with truth and hold the government accountable. When the media largely just takes what the government says as fact and supports the point of view of Big Government, it causes government and politicians to be ***far less accountable and far more powerful.***

El Dorado County suffers from Mushroom Syndrome whereas government bureaucrats heap on the manure to keep citizens perpetually in the dark. Ethics and Brown Act violations by our civil servants are rampant. You may be familiar with the Marines motto: ***Mind over Matter.*** Week after week when it comes to responding to citizens the Board has demonstrated the attitude ***“We don’t mind and citizens don’t matter.”***

Yesterday I met with MGDGP Superintendent Jeremy McReynolds. He loaned me a copy of the MGDSHP General Plan submitted to Gov. Gerry Brown in 1979. He also provided me a copy of the Mt. Murphy Road Bridge letter addressed to Sr. Planner Anne Novotny by CA State Parks District Superintendent Matt Green dated 4/4/13. This letter does not appear to be posted anywhere for the public to view...Mushroom Syndrome again?

Last year when we met with Matt & Jeremy McReynolds they were given the ***DVD “Agenda: Grinding America Down”***. That documentary addresses the issues of Mushroom Syndrome, useful idiots, and the Gestapo-style government tactics that are causing our nation to collapse from within. Some refer to it as BS--***Bureaucratic Shenanigans***--or bully tactics that are meant to intimidate the public into silent compliance and paving the highway to Socialism.

Last week you’ll recall agenda Item #25 regarding Bucks Bar historic bridge when Chris Smith addressed his concerns about that bridge going through his home. Wanda Nagel also expressed similar concerns about the bridge project affecting her property. Now I ask you to recall my comments about CA State Parks, Recreation & Historic Preservation used as a primary agency to grease the wheels of Agenda 21. We cannot permit Citizen’s Constitutional rights to take second place to Eminent Domain & Big Government BS.

These questions have remained unanswered for weeks, months and literally YEARS:

As you can see by the attachments to this agenda item, there remain many unanswered questions about this Capital Improvement Project. Those of us on the north side of the river are particularly concerned about safety and egress in the event of another fire or major disaster. The Coloma Resort is located at the apex of Bayne and Mt. Murphy Roads where traffic jams are a common occurrence especially during tourist & fire season.

Those roads also form the boundaries of my north and south property lines. As you know 5 arson fires have been ignited either directly on my property or within ¼ mile from my home.

It is significant that the owners of the Coloma Resort do NOT live in Coloma and are frequently in violation of laws and ordinances within the jurisdiction of Code and Law Enforcement. Last August a neighbor distributed an email about another obstruction at the Mt. Murphy Bridge by Coloma Resort RVs which I'll be entering into the public record. This raised concerns about an Emergency Evacuation Plan and the potential risk to residents on this frequently traveled bridge including foot traffic, traffic jams and transport of heavy equipment and modular units.

This topic has been broached frequently during meetings with Sheriff D'Agostini, MGD Superintendent Jeremy McReynolds and Development Services Director Roger Trout. This morning I submitted an Official Letter into the public record addressed to Sheriff D'Agostini which addresses the safety concerns of the river residents in our community. It represents just the tip of the public safety, transparency and accountability iceberg...

Earlier today I distributed copies of **American Jurisprudence* - Public Official Trustee Duties and Authorization**. That document is significant to the Mt. Murphy Bridge Project causing traffic 'indigestion' in Coloma otherwise known as "the belly of the beast."

Elected officials have a fiduciary to respond to constituents in a timely manner as a matter of public trust. For starters:

- WHAT is the emergency evacuation plan for residents landlocked by this CIP?
- WHY has the county remained silent about easement inquiries mentioned by Jack Sweeney?
- WHY has Kim Kerr not responded yet to inquiries made over 2 years ago regarding this CIP?
- WHEN will Mt. Murphy Road be properly maintained by DOT?
- WHEN can residents commence DIALOG about this project?

- WHEN can we expect Supervisor Briggs to respond to his constituents instead of giving preferential favors to his friends?

Do you have any questions or comments at this time?

Mr./Madam Clerk: I order you to enter these materials into the public record:

1. This transcript
2. Bob Day 8/3/13 email
3. Mt. Murphy & Coloma Resort Modular obstructions photos



DEPARTMENT OF PARKS AND RECREATION

Major General Anthony L. Jackson, USMC (Ret), Director

Gold Fields District
7806 Folsom Auburn Road
Folsom, CA 95630

April 4, 2013

Ms. Anne Novotny, Senior Planner
El Dorado County Community Development Agency
Transportation Division
2850 Fairlane Court
Placerville, CA 95667

Dear Ms. Novotny,

The purpose of this letter is to express the interests, concerns and recommendations of the Gold Fields District of California State Parks regarding the Mt. Murphy Road Bridge Project. The Gold Fields District manages Marshall Gold Discovery State Historic Park which is immediately adjacent to the Bridge on both sides of the South Fork American River. District staff met with County staff, Matt Smeltzer and Adam Bane, in July 2012 to discuss the project. State Parks staff also attended the February 7, 2013 public meeting regarding the project.

State Parks realizes the Bridge project is at the inception of planning and the current goal is to prepare a Project Study Report (PSR) over the next year that will develop and prioritize project alternatives. Following the PSR, an environmental review and documents will be conducted and prepared.

As noted by County staff, the Marshall Gold Discovery State Historic Park General Plan, approved in 1979, does include goals and objectives for traffic circulation which may be relevant to the Mt. Murphy Road Bridge Replacement Project. The Plan recommends the re-routing of Highway 49 outside the Park and development of a "Coloma bypass road" to facilitate removing vehicle traffic from Main Street within the Park and restore the historic appearance of the Street during the gold rush era. The Plan presented a conceptual vision for addressing traffic impacts within the park unit and recognized that State Parks did not have the jurisdiction to fully implement this vision and would need to work with the County, Caltrans and other agencies to achieve the Plan goals. State Parks acknowledges that the 1979 General Plan is quite dated at this time and that the vision for traffic circulation described in the Plan is very challenging to achieve. State Parks also recognizes that the purpose of the Bridge Project is only to repair or replace the existing bridge.

The concerns and interests behind the traffic circulation vision in the 1979 Marshall Gold Discovery State Historic Park General Plan are still relevant. These concerns include: the traffic impacts on the historic buildings along Main Street, particularly vibration from heavy trucks and other vehicles; the impacts of traffic on the safety of visitor pedestrian traffic in the park unit, particularly the more than 70,000 school

children that visit the park annually; and enhancing the visitor experience, visual quality and aesthetics of the historic core of the park unit.

To the extent the Mt. Murphy Road Bridge Replacement Project can help address these impacts and achieve the goals and interests in the General Plan while still meeting the project's own objectives, we would hope such options and alternatives are fully explored.

State Parks is currently engaged in finalizing the plans for the relocation and reconstruction of the Sutters Mill. The current Mill reconstruction, built in the 1960's, is in disrepair and in need of replacement. The new reconstruction will relocate the Mill to the west (downstream) much closer to the original Mill location near the gold discovery site. Despite being a reconstruction, the Mill is the most popular and iconic feature of the park unit. State Parks is concerned about any proposal to replace the Mt. Murphy Bridge which might impact or adversely affect the Sutter Mill reconstruction.

Below is a summary of our concerns and interests regarding the Bridge project. Some of these items could be useful criteria in evaluating and prioritizing alternatives studied in the PSR.

- Reducing the impacts of traffic on the historic structures and historic core of the park unit;
- Providing for and improving visitor safety, particularly pedestrians who cross both Highway 49 and the Mt. Murphy Bridge to visit park features and participate in park programs;
- Protecting the visual quality and viewshed of the historic core of the park unit, including along both sides of the River from the North Beach entrance to the Coloma Schoolhouse;
- Ensuring pedestrian/bicycle access across the South Fork American River near the location of the existing Bridge. If possible, retain the existing historic Bridge structure and utilize it for pedestrian and bicycle traffic and emergency access. State Parks is not in a position financially to accept ownership and operate and maintain the Bridge as was suggested at the recent public meeting;
- If a replacement Bridge is constructed, ensuring safe and adequate access for pedestrians and bicycles across the new Bridge;
- If a replacement Bridge is constructed in place of the existing Bridge, design and construct the structure to replicate one of the historic bridges that spanned the river at this location. It would take some research to determine the most appropriate historic bridge design to replicate or reference in a new bridge design;

Given our above interests and concerns, State Parks recommends that the following alternatives are explored and evaluated in the PSR:

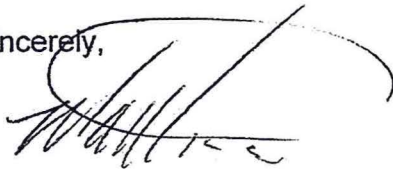
- Repair and reconstruct (to the extent necessary) the existing bridge structure to meet required standards for vehicle traffic. Construct a separate replica of one of the earlier (and smaller) historic bridges that spanned the River in this location for pedestrian and bicycle traffic only. A faithful replica of an historic bridge would be less of a visual intrusion whether it was immediately upstream or downstream of the existing Bridge.

- Retain the existing bridge as a pedestrian/bicycle bridge and construct a new bridge for vehicle traffic outside the historic core of the Park. Two suggested locations which would keep the new bridge out of the historic core of the park unit are downstream of the North Beach area or upstream of the existing bridge in approximate alignment with Sacramento Street.
- Retain the existing bridge as a pedestrian/bicycle bridge and evaluate the potential to connect Marshall Grade to Carver Roads to provide a traffic connection from the south side of the River and Highway 49 to Mt. Murphy Road and Bane Road. This option would utilize the existing (and soon to be improved) Highway 49 Bridge across the River and would not require any new bridge.

There may be other alternatives that meet the needs of the project and address State Parks concerns, but these are some initial options that we would like to see explored in the PSR.

We look forward to participating in the Stakeholder Advisory Committee that will help guide the development of the PSR. If you have any questions about this letter please contact Marshall Gold Sector Superintendent Jeremy McReynolds at (530) 622-3027 or Senior Park and Recreation Specialist Jim Micheaels at (916) 988-0513. Thank you.

Sincerely,

A handwritten signature in black ink, appearing to read 'Matt Green', written over a horizontal line.

Matt Green
District Superintendent

CC Ron Briggs, El Dorado County Supervisor, District 4
Dan Bolster, El Dorado County Transportation Commission



RESOLUTION NO.
OF THE BOARD OF SUPERVISORS OF THE COUNTY OF EL DORADO
Exposing United Nations Agenda 21

WHEREAS, the United Nations Agenda 21 is a comprehensive plan of extreme environmentalism, social engineering, and global political control that was initiated at the United Nations Conference on Environment and Development (UNCED) held in Rio de Janeiro, Brazil, in 1992; and,

WHEREAS, the United Nations Agenda 21 is being covertly pushed into local communities throughout the United States of America through the International Council of Local Environmental Initiatives (ICLEI) through local "sustainable development" policies such as Smart Growth, Wildlands Project, Resilient Cities, Regional Visioning Projects, and other "Green" or "Alternative" projects; and,

WHEREAS, this United Nations Agenda 21 plan of radical so-called "sustainable development" views the American way of life of private property ownership, single family homes, private car ownership and individual travel choices, and privately owned farms; all as destructive to the environment; and,

WHEREAS, according to the United Nations Agenda 21 policy, social justice is described as the right and opportunity of all people to benefit equally from the resources afforded us by society and the environment which would be accomplished by socialist/communist redistribution of wealth: and,

WHEREAS, according to the United Nations Agenda 21 policy National sovereignty is deemed a social injustice.

NOW, THEREFORE, BE IT RESOLVED, that in order to protect property rights, the Board of Supervisors of the County of El Dorado recognizes the insidious nature of United Nations Agenda 21 and hereby exposes to the public and public policy makers the dangerous intent of the plan; and therefore be it further

RESOLVED, that neither the U.S. government nor state or local government is legally bound by the United Nations Agenda 21 treaty in that the treaty has never been ratified by the U.S. Senate; and therefore be it further

RESOLVED, that the implementation of United Nations Agenda 21 strategies for "sustainable development" at the federal and state and local governments across the country will have destructive repercussions and we hereby endorse rejection of its radical policies and rejection of any grant monies attached to it.

PASSED AND ADOPTED by the Board of Supervisors of the County of El Dorado at a regular meeting of said Board, held the ____ day of _____, 20__, by the following vote of said Board:

Attest:
Terri Daly
Acting Clerk of the Board of Supervisors

Ayes:
Noes:
Absent:

By: _____
Deputy Clerk

Chairman, Board of Supervisors



Compass2Truth

Citizens Serving God in Truth and Liberty

P.O. Box 598
Coloma, CA 95613
(530) 642-1670

melody.lane@reagan.com

February 11, 2014

To: El Dorado County Board of Supervisors
EDC Clerk to the Board

CA PUBLIC RECORDS ACT REQUEST

Pursuant to my rights under the California Public Records Act (Government Code Section 6250 et seq.), I ask to obtain the following:

- The names of all the insured employees, if available, covered under CSAC Excess Insurance Authority policy # 01-996-28-15.

If you determine that some but not all of the information is exempt from disclosure and that you intend to withhold it, I ask that you provide a signed notification citing the legal authorities on whom you rely.

It is requested that your determination be made within **10 days** as stipulated within the California Public Records Act.

Thanks for your anticipated cooperation.

Melody Lane
Founder – Compass2Truth
P.O. Box 598
Coloma, CA 95613