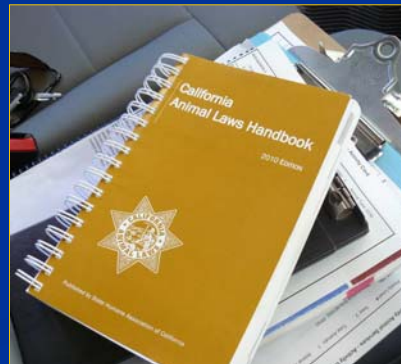




# El Dorado County

Health Services Department  
Public Health Division

## Animal Services



October 25, 2010

1

## Purpose of Animal Services

*Control & Humane Treatment of Animals - Public Safety*

**“The Purpose is to regulate the control and humane treatment of animals within the boundaries of El Dorado County for the protection of the safety and welfare of the public.”**

- El Dorado County  
Ordinance 6.04.015

2

## Animal Services Focus

Animal Services' enforcement of animal related laws, ordinances, and regulations protects domestic animals and the public from:

- \* *disease spread by animals*
- \* *potential harm from dangerous animals*
- \* *other animal related threats*

3

## Animal Services Abides by and Enforces Laws, Ordinances, and Other Mandates

- County & City Ordinances
- Health & Safety Code
- Penal Code
- Food & Agricultural Code
- Civil Code
- Welfare and Institutions Code
- Emergency Response Mandates

4

## Staff Members Respond to Over 10,000 Complaints from County/City Residents Each Year



Formal complaints plus inquiries can be well over 100 per day

Call and complaint types are further addressed throughout this presentation.

5

## Priorities:

- Prevent rabies
- Protect against Potentially Dangerous/Vicious Dogs
- Respond to reports of cases of neglect/cruelty and injured animals at large
- Shelter stray/lost animals; reunite owners/pets; and ensure appropriate adoptions
- Control pet over-population (enforce spay/neuter laws)
- Ensure appropriate emergency/disaster response

6

**Animal Services is mandated to follow laws and ordinances established to protect against rabies.**

- **County Ordinance 6.16.010** requires all dogs to be vaccinated against rabies.
- **County Ordinance 6.16.050** requires all dogs to have a current license (providing registration service to document and verify vaccination status and identify dog).
- **California Food & Agriculture Code Sec. 31101 and County Ordinance 6.16.020** authorize Animal Services to pick up and impound stray animals (animals at large are at greater risk of rabies exposure and increase potential of bites to people/other animals).
- **California Health & Safety Code 121615 and County Ordinance 6.12.045** outline quarantine requirements (to control/observe animals associated with bite cases).

7

## **Rabies Prevention and Control**

- **About 700 bites reported in EDC annually.**
  - 400 dog bites
  - 300 bites from other animals
- **Many bites involve stray animals.**
  - In 2009, Animal Services responded to over 3,000 complaints about stray animals.
- **Rabies is primarily spread through bites.**

8

## ■ Importance of Rabies Prevention:

- Fatal to people and animals
- Affects the brain and nervous system
- Once symptoms start, no treatment helps... death follows
- About 55,000 people die annually around the world due to rabies
- Deaths occur in countries without adequate animal control and/or access to rabies vaccine



## ■ Bite Response Activity:

- Animal Services investigates all animal bites and coordinates with Public Health Communicable Disease staff as needed
- Vaccination is verified; biting animal is tested
- When required, rabies treatment needs to begin within 10-14 days of exposure
- Quarantines range from 10 days to 6 months



9

## Rabies Exists in El Dorado County *Foxes, Bats, and Skunks are Common Carriers*

FOR IMMEDIATE RELEASE

March 18, 2009

### Fox That Bit Boy in El Dorado County Tests Positive For Rabies

*Child is Doing Well and is Receiving Vaccine to Prevent Rabies*

El Dorado County Animal Services officers have found the fox that they believe bit a three-year-old boy while he was playing outside at his residence in Cameron Park on March 12. Animal Services officers were contacted on the evening of March 17 by a resident who lived near where the bite occurred and who had found a dead fox. Officers picked up the fox and the fox was positively identified by the caregiver of the child who was bitten. The fox was tested today and confirmed to have the rabies virus. The child, who sustained minor injuries during the incident, is recovering and is receiving vaccine to prevent rabies.

10

## Dangerous & Vicious Dogs

- **Food and Agriculture Code 31601** – Provides guidelines for counties to establish and enforce laws addressing potentially dangerous and vicious dogs.
- **County Code 6.12.050** – Defines potentially dangerous/vicious dogs, and provides requirements for designating these animals and providing protections for the public.



*Our County Ordinance was written following the serious mauling of a child in our County in 2001. Animal Services enforces this critical Ordinance.*

11

## Public Safety Impact of Dangerous & Vicious Dogs

**Last year, Animal Services responded to over 500 complaints about aggressive dogs**



12

# Dangerous/Vicious Dog Control

- Owners of dogs declared dangerous or vicious must:
  - Keep their dog away from children
  - Post signs prominently on property
  - Ensure dog is housed behind secure, locked, approved enclosure
  - Ensure dog wears special designated collar at all times
  - Pay applicable fees



*Animal Services requires that owners comply with these legal obligations to ensure public safety.*

13

# Neglect & Cruelty - Crimes Against Animals

**In 2009, Animal Services responded to 481 reported cases of animal neglect or cruelty**

- CA Penal Code 597 defines crimes against animals, including cruelty/neglect.
- PC 830.9, County Ordinances 6.08.013, 6.08.030, etc., establish Animal Services' authority to investigate and file crime reports for animal abuse



14

## ■ Neglect

- Depriving of food, water, shelter, or care
- Unhealthy living conditions
- Animal hoarding
- Abandonment



## ■ Abuse/Cruelty

- Torturing or mutilation
- Animal fighting
- Cruelly beating or killing



15

## Crimes Against Animals - Cycle of Violence

- **Animal Services is often a first responder.**
- **Coordination with law enforcement, Human Services (CPS/APS), and other affected partners occurs on many cases.**



16



## *Research shows a strong correlation between animal abuse and violence against people.*

- The largest single study of serial killers found that 46% admitted to committing animal cruelty as adolescents.
- A Massachusetts study of 153 animal abusers found that within 10 years of their arrest, 70% were charged with other crimes including violence, drug offenses and property crimes.
- Of 9 school shootings between 1996-1999, half of the shooters had a history of animal cruelty.
- A 1997 survey of 50 of the largest shelters for battered women in the United States found that 85% of women and 63% of children entering shelters discussed incidents of pet abuse in the family.

17

## There have been significant cases locally

### Guilty Plea Entered by Defendant in El Dorado County Goat Strangulation Case

A 23-year-old Folsom man, Ryan Troyer, has pled guilty in a case of extreme animal abuse that occurred at a family ranch in El Dorado County over a three-month period. Troyer pled guilty on Monday afternoon to eight counts of felony crimes against animals, and seven counts of grand theft in the case where he was accused of torturing and strangling to death at least 11 prized Nigerian goats. Troyer was sentenced to nine years in state prison and was ordered to pay restitution to

- Animal Services must investigate all complaints
- Education is emphasized
- Animals are removed if in imminent danger
- Officers prepare legal filings as appropriate, conforming to strict legal processes
- Neglect/abuse can result in fines, probation, and jail time if severe

18

## Hoarder Cases *Animal and Public Welfare*

- Often involve unhealthy living conditions for animals and people in household.
- Mandated reporting results in referrals to Mental Health, Public Health, Adult Protective Services, Child Protective Services, and law enforcement.



19

## Connection to Other Crimes

- **Penal Code 597.5** - A felony to cause any dog to fight with another dog, for amusement or gain; punishable by up to 3 years in prison and/or a fine of \$50,000.
- **Penal Code 597b** - Illegal to possess or train fighting birds, cause any gamecock to fight, or sell or possess implements known as gaffs or slashers.

*Animal fighting operations have been found in El Dorado County.*

*Drugs, weapons, violence, and related problems are often connected to animal fighting operations, requiring a multi-agency response involving law enforcement and Animal Services.*



20

## Injured or Sick Animals (at Large)

- Animal Services is charged with responding to calls and complaints regarding injured or sick animals at large without their owners (stray, lost, and/or abandoned).
  - 457 such cases were handled in 2009.
  - Animal Services works closely with local veterinarians to determine the level of emergency care needed.



21

## Sheltering Animals

- **Food and Agriculture Code 31105 and County Ordinance 6.08.011** – Outline the County's responsibility for taking up stray animals and providing a place to impound (shelter) them.
- **Food and Agriculture Code sections 30503 and 31715.3** – No animal control agency or shelter shall sell or give away any dog or cat that has not been spayed or neutered.

*Animal Services operates the WS and SLT shelters and ensures that dogs and cats are spayed or neutered prior to adoption.*



22

- **Animals receive housing, food, exams, and vaccinations.**
- **The shelters utilize community volunteers whenever possible:**
  - Foster Care Program
  - Shelter Site Volunteers
  - Adoptions and Adoption Events

*Currently have 140 volunteers*

- **Large animals are sheltered at the Grace Foundation in El Dorado Hills via a service contract. Required primarily due to:**
  - Neglect/abuse incidents
  - Loose livestock on roadways resulting from improper confinement



23

*El Dorado County maintains very high adoption/live release rates.*

**88% of dogs and 66% of cats that come to our County shelters are either reunited with their owners or successfully placed into new homes.**

**Last year:**

- **1,037 dogs were reclaimed by their owners**
- **62 cats were reclaimed by their owners**
- **627 dogs were adopted**
- **669 cats were adopted**

24

## Controlling Pet Over-Population

- **Cost-effective spay/neuter program:**
  - PAWED
  - Animal Outreach
- **Vet coming to mobile clinic on-site has further lowered spay/neuter costs.**
- **Over population costs California government \$250 million to euthanize 500,000 animals per year.**



25

## Emergency Disaster Response: California Emergency Services Act (AB 450)

- **Requires animal services agencies to be part of emergency response operational planning and implementation efforts (fires and other threats).**
- **Encourages mutual aid between counties.**
- **El Dorado County benefits in times of need through the aid of other counties.**
- **During Angora Fire, we received aid from multiple other animal services agencies and non-profit animal disaster groups.**



26

## Emergency Disaster Response: California Emergency Services Act (AB 450)



Animal Services is a critical emergency response partner, alongside fire agencies and law enforcement. Animal Services officers locate and bring in lost and injured animals to safety.

27

## Emergency Disaster Response: California Emergency Services Act (AB 450)



During the Angora Fire, over 100 domestic animals were located through Animal Services and returned to their owners.



28

## Other Animal Issues

**Animal Services regularly handles other animal related calls and concerns from the public and partner agencies.**

Examples from last year:

- 963 Barking Dog Complaints
- 983 Dead Animal Removals
- 132 Law Enforcement calls for protective custody of animals (accidents, evictions or arrests)



*Animal Services officers investigate complaints and leave contact information if no one is home.*

29

## Partnering Agencies

- Sheriff's Office/OES
- South Lake Tahoe Police/CHP  
Placerville Police
- Fire Agencies
- California Fish and Game
- Agriculture Department
- Environmental Management
- Cal Trans / DOT
- Parks and Recreation
- District Attorney
- Human Services (CPS / APS)
- Other Health Services Programs  
(e.g., Communicable Disease, Mental Health, etc.)
- Animal Welfare Groups  
(PAWED, Animal Outreach, Etc.)



30

## Unique Challenges

- Vast coverage area
- Limited field officers



- Calls prioritized based on urgency of need.
- Officers are assigned on-call shifts for after hours and weekend coverage (ensuring 24/7 coverage for emergency calls).

31

## Unique Challenges

- Rural/mountainous nature of County, with rugged terrain and inclement weather
- Loose livestock and other animals on roadways
- Over 700 dead deer removed per year



32



## Unique Challenges

- Calls/complaints are continuous (over 10,000/year)
- Increasingly facing rural/urban interface issues
- Public response-time expectations often unrealistic given coverage area, call volume and types, and limited staff resources



33

## Unique Challenges

- People often highly emotional about animal/pet issues
- Neighbor disputes are common
- Sometimes the outcome is not satisfactory to one or more parties
- People may not understand or care that officers must follow laws

34

# Locations

- South Lake Tahoe - one central location for operations
- West Slope - three separate locations  
*Operations are fragmented – staff inefficiencies and public inconvenience results from multiple West Slope locations.*

South Lake Tahoe  
Shelter and  
Business Office  
1120 Shakori Drive



Placerville  
(Shelter)  
511 Placerville  
Drive

Grace Foundation  
El Dorado Hills



Placerville  
(Business Office)  
415 Placerville  
Drive, Suite N

# Priorities: Compliance with Laws and Regulations



**Priorities:**  
**Ensure Safety of People and Animals**  
**by Performing all Mandated Services**



37

**Priorities:**  
**Efficient and Cost Effective Services**



*Includes Quality Customer Service  
& Community Education*

38

# Animal Services Staffing

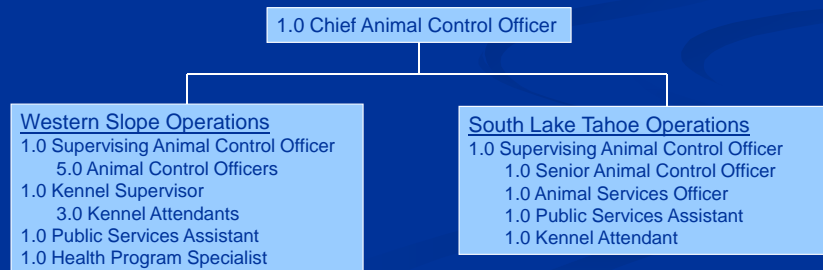
## Recent Staff Reductions in Animal Services:

FY 08-09 Via Board Action – Nov. 2008: 1.0 Operations Manager (West Slope)

FY 10-11 Budget - June 2010: 1.0 Animal Control Officer (West Slope)

FY 10-11 Addenda Budget - Sept. 2010: 1.0 Animal Control Officer (SLT) and 1.0 Public Services Assistant (West Slope)

## Remaining Animal Services Staff in FY 10/11 Adopted Budget:



39

# Impact of Staff Reductions

- Response times affected on both slopes (public safety issue)
- Dead animal removal delayed
- Potential reduction of hours open to public
- Some services (such as barking dog complaints, unconfined strays, owner requests for assistance, support to wildlife issues) may receive slow or no response

40

## Animal Services FY 10/11 Adopted Budget

Description	FY 10-11 Adopted Budget
Salaries/Benefits	\$1,323,729
Services/Supplies	\$627,103
Other Charges & Intrafund	\$566,027
Fixed Assets	\$3,600
<b>Total Expenditures</b>	<b>\$2,520,459</b>
Licenses/Permits/Fines/Fees	\$521,883
Other Govt Agencies (Cities, Tahoe Conservancy, & Alpine County Contracts)	\$494,184
State Sales Tax Realignment	\$183,457
<b>Total Revenue</b>	<b>\$1,199,524</b>
<b>Net County Cost</b>	<b>\$1,320,935</b>

41

## Revenue in FY 10/11 Through Contractual Agreements

City of Placerville	\$81,421
City of South Lake Tahoe	\$398,762
Alpine County	\$6,000
Tahoe Conservancy	\$8,000
<b>* Total Approximate Revenue in FY 10/11</b>	<b>\$494,183</b>

*\* Does not include \$52K also anticipated from DOT for dead animal pickup*

42

## Fees That Help Offset Costs

- Impound fees
- Boarding fees
- Adoption fees
- Licensing
- Delinquent license penalties
- Potentially dangerous dog
- Non-commercial kennel permit
- Commercial kennel permit
- Kennel inspections
- Trailer usage
- Owner release of animal
- State unaltered impound penalty
- Euthanasia (owner release)
- Microchips
- Officer hourly rate for service

In FY 10/11, Animal Services is expected to generate over \$500,000 in revenue from fees, fines, permits and other charges. For example, in FY 09/10, Animal Services issued/renewed 9,751 dog licenses to collect \$229,289 in revenue.

43

## Service Fees

Staff have begun analyzing current fees:

- Cost of service vs. fee charged
- Fees charged in surrounding counties

Fees likely to require increase include:

- Boarding Fees
- Adoption Fees
- Kennel Permits

44

## Organizational Names

Staff have begun researching names used in other counties. Common names are:

- Animal Services
- Animal Care and Control
- Animal Care Services
- Animal Control
- Animal Care and Regulation

45

## Potential Board Actions

- Direct Staff to return with recommendations for changes to fees
- Direct Staff to return with information and options regarding organizational name

46

Questions?