

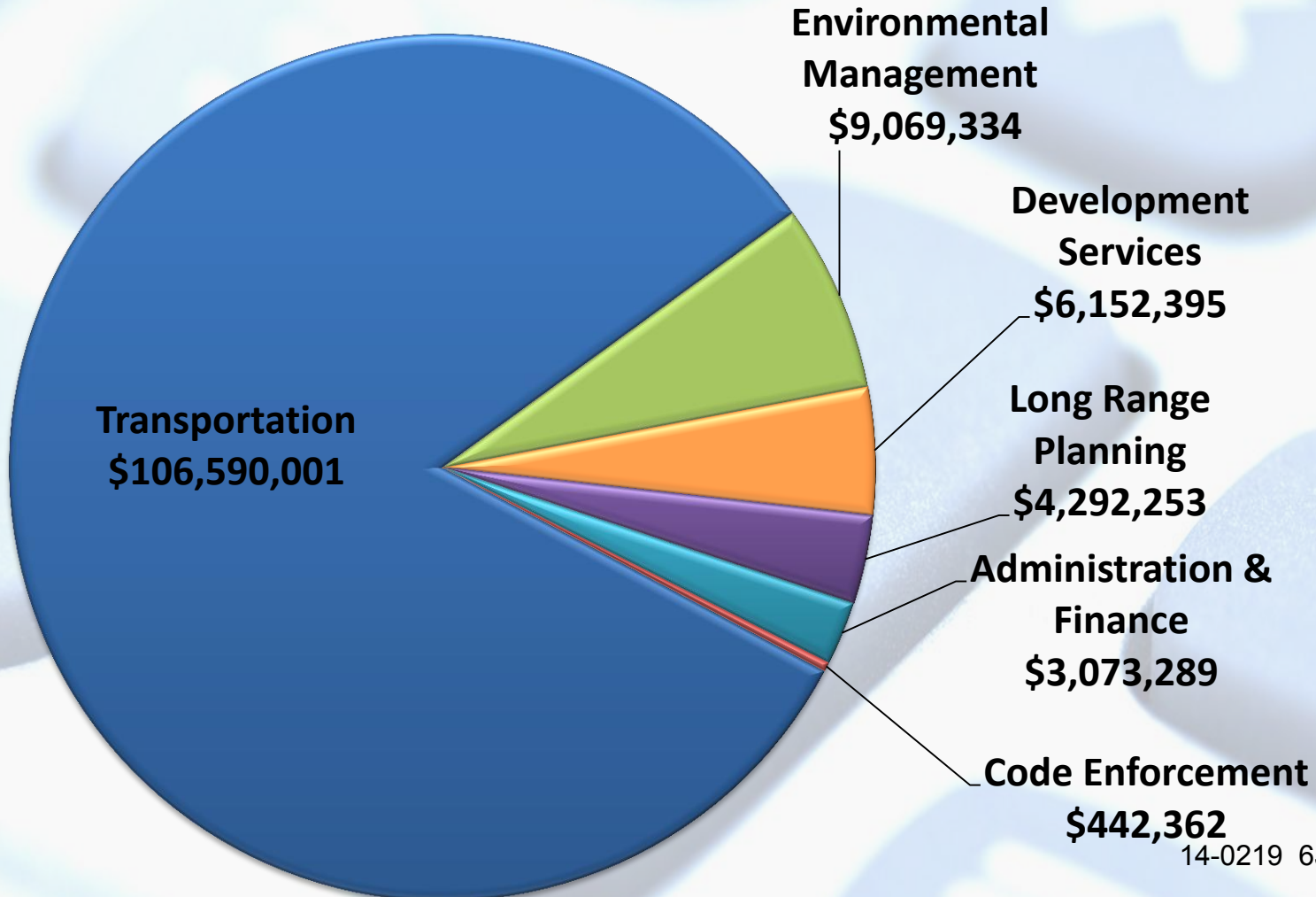


**Community Development Agency**  
**FY 2014-15 Budget**

# Community Development Agency

## FY2014-15 Budget

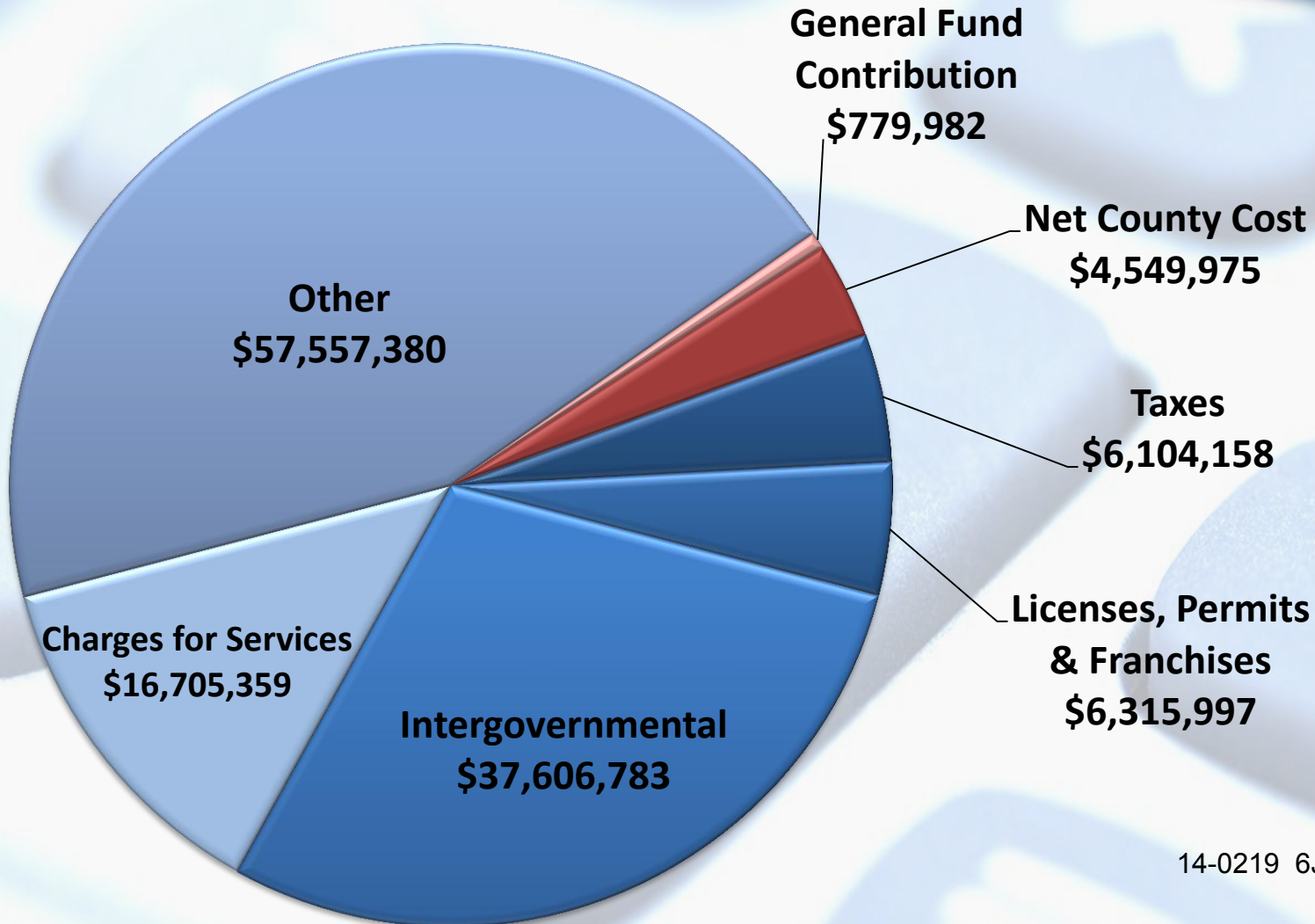
\$129,619,634 Total Appropriations



# Community Development Agency

## Total Impact to General Fund

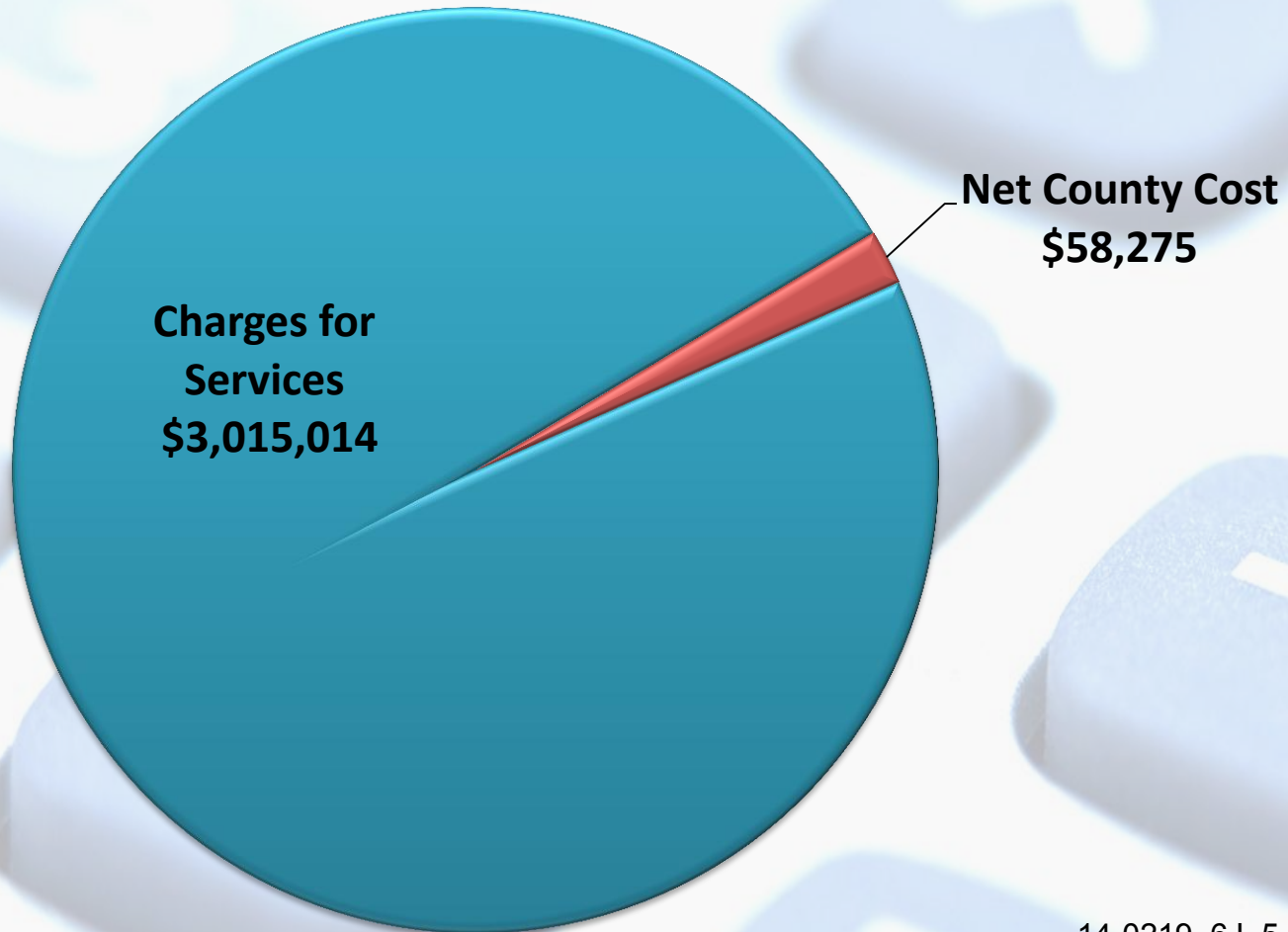
\$129,619,634 Total Appropriations





# **Community Development Agency's General Fund Impact by Division/Unit**

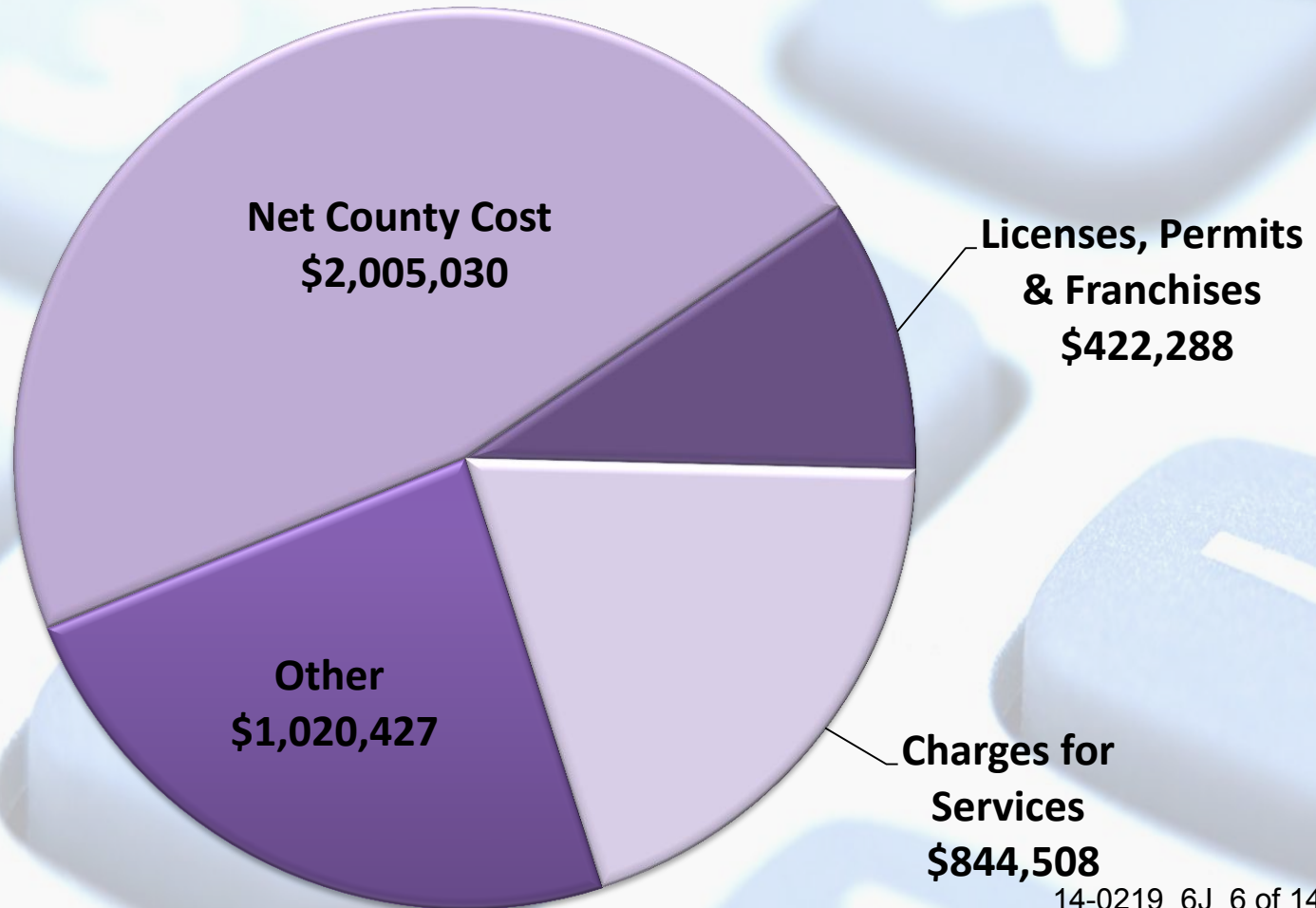
Community Development Agency  
Administration & Finance Division  
FY2014-15 Budget



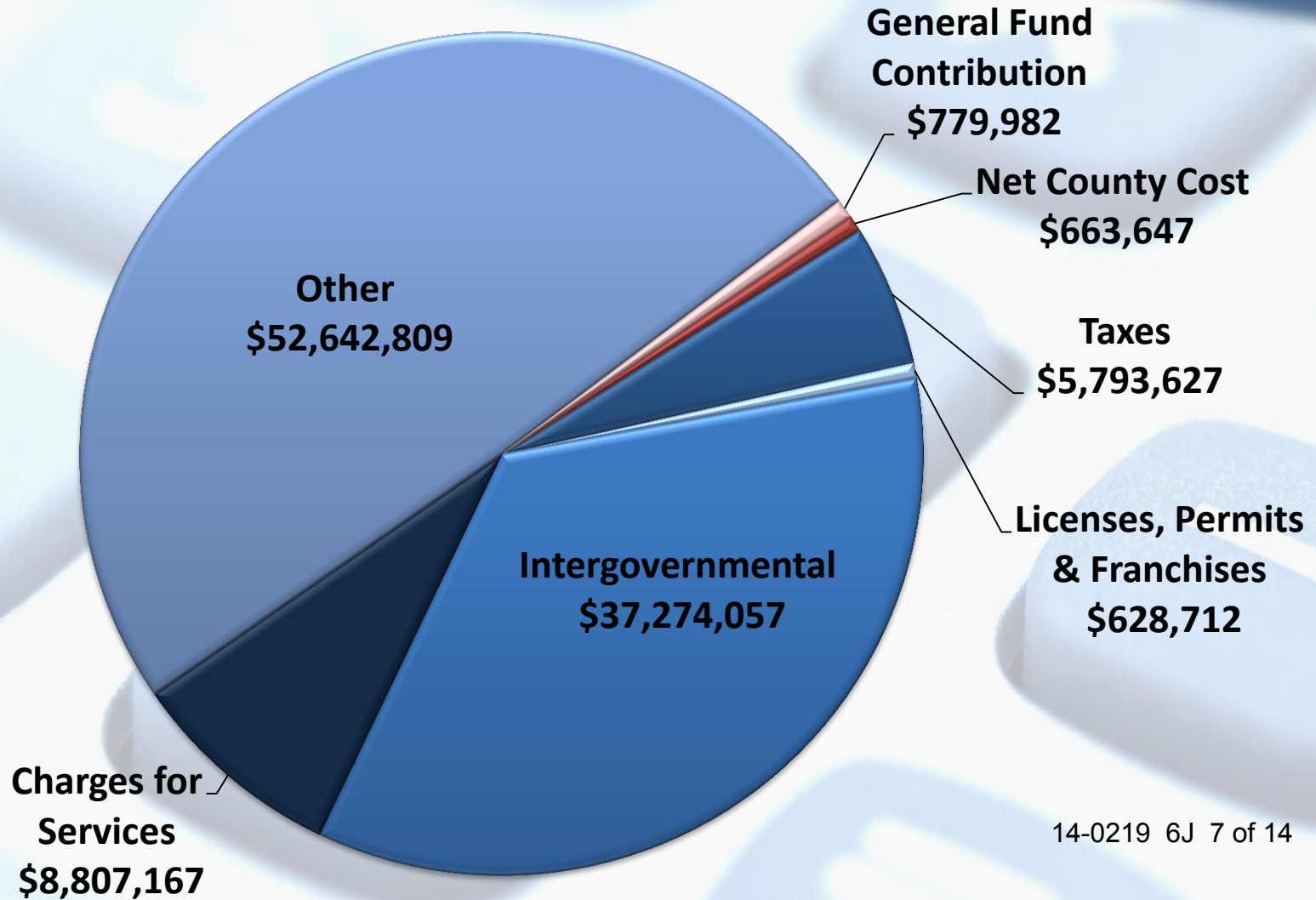
# Community Development Agency

## Long Range Planning Division

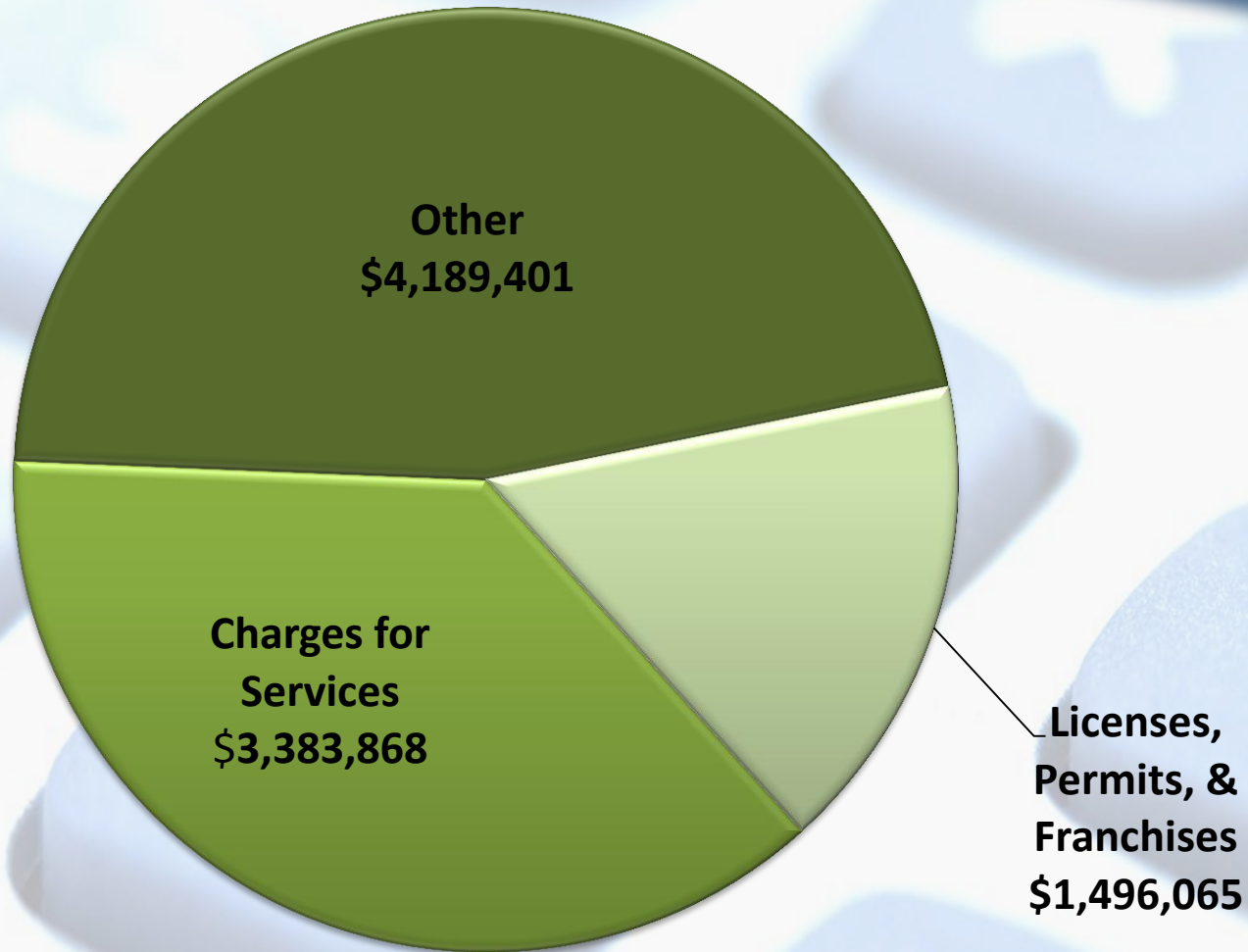
FY2014-15 Budget



# Community Development Agency Transportation Division – Operations & CIPs FY2014-15 Budget

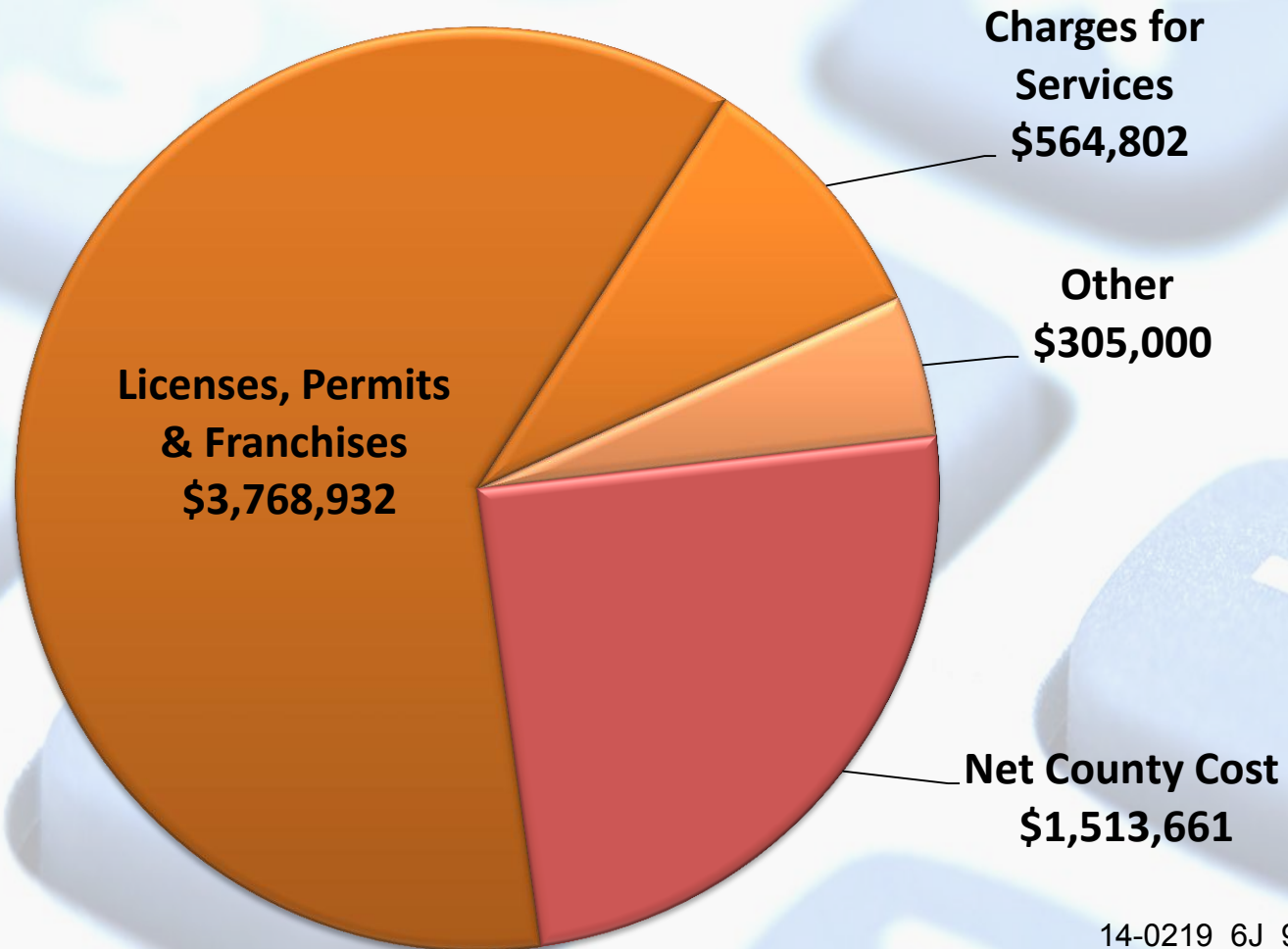


# Community Development Agency Environmental Management Division FY2014-15 Budget

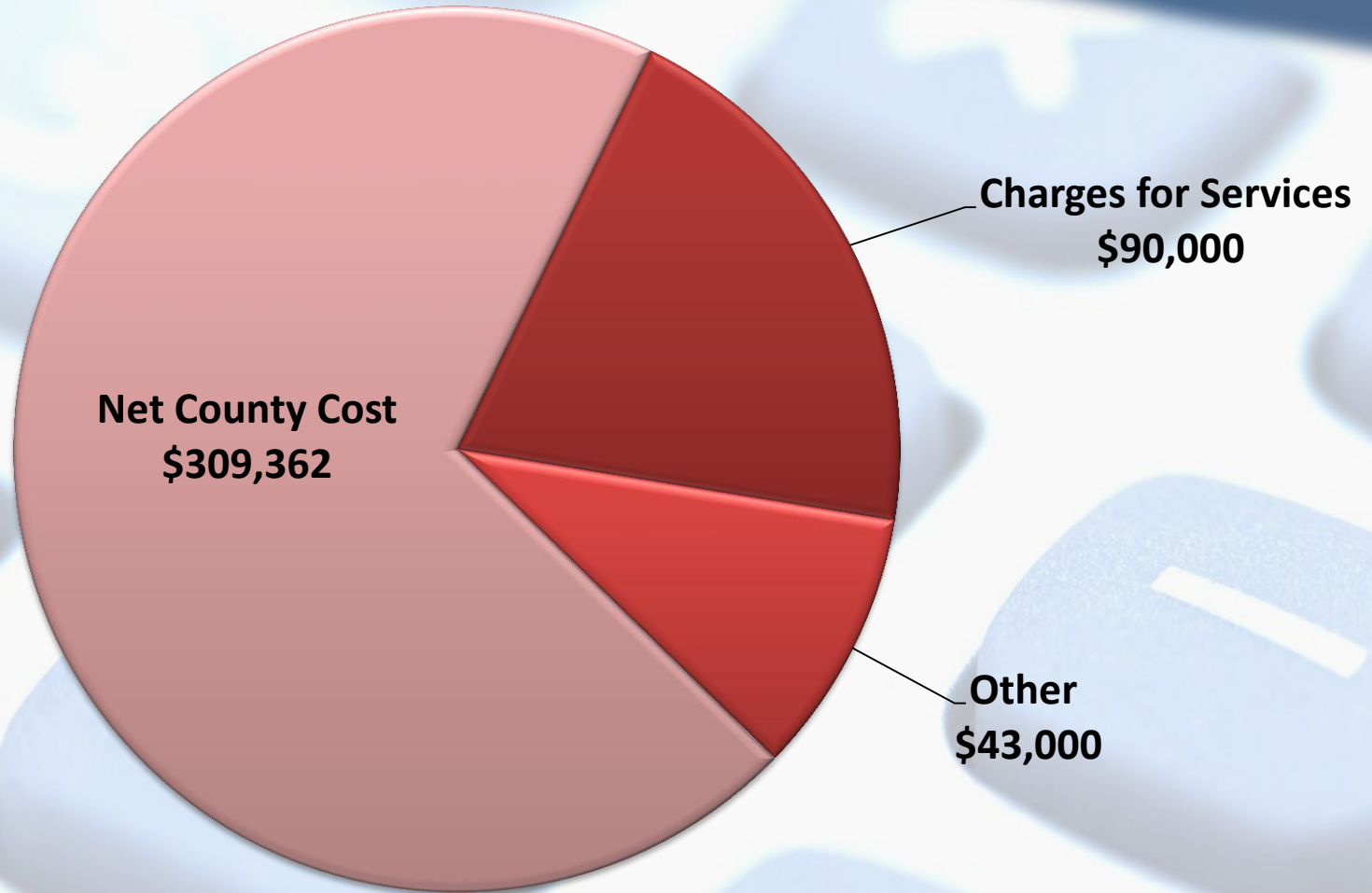




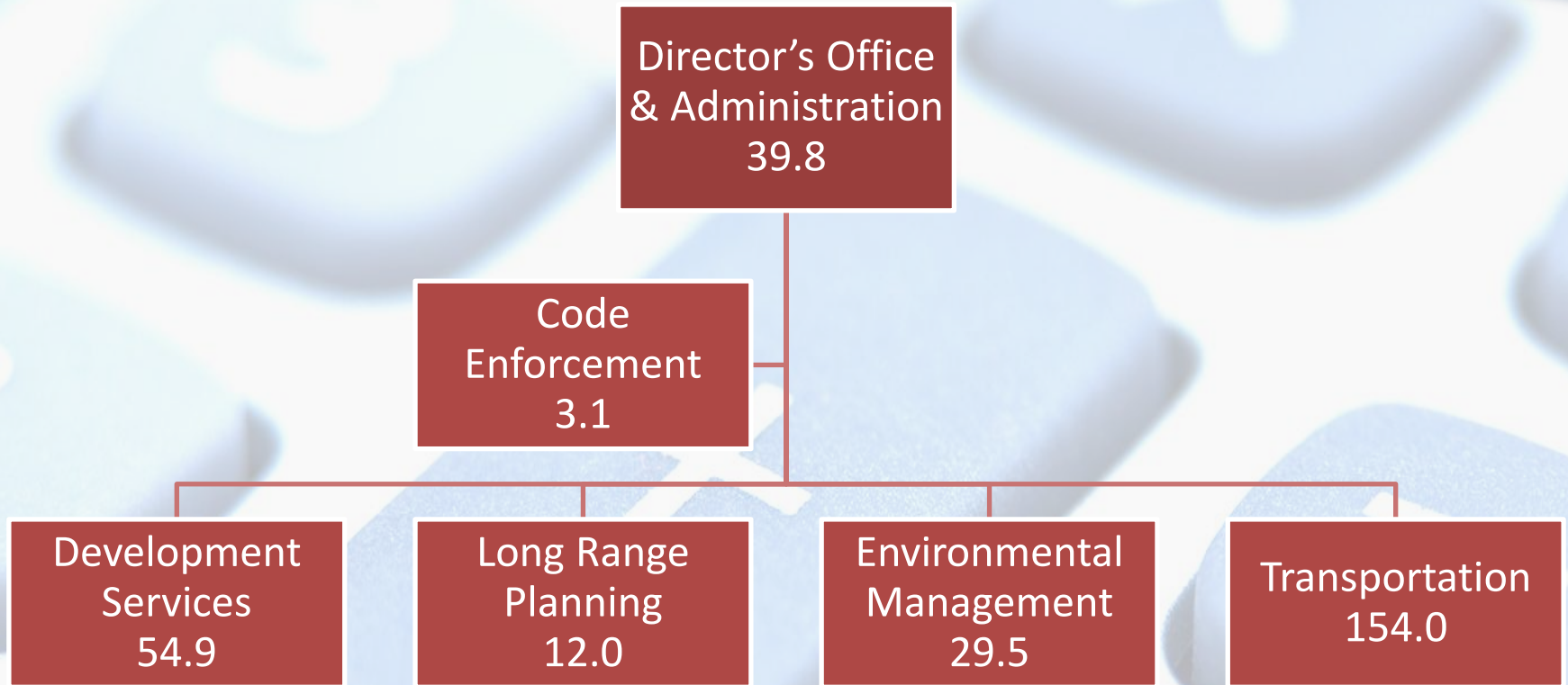
# Community Development Agency Development Services Division FY2014-15 Budget



# Community Development Agency Code Enforcement FY2014-15 Budget



# CDA 293.3 FTE Allocations



## Laying the Foundation

### – *Internal Priorities*

- Improving internal processes
- Creating a unified culture
- Achieving excellence in customer service

### – *Operational Priorities*

- Targeted General Plan Amendment/Zoning Ordinance Update
- Capital Improvement Plan/Traffic Impact Mitigation Fee Update
- Permit processing audit recommendation implementation
- Solid waste franchise agreements
- Improved communication

# For Additional Details



County of El Dorado  
Community Development Agency

2014-2015

## Business Plan



# Future Challenges

(Not for consideration at this time)

- **Ray Lawyer Drive**
- **Camino Interchange**
- **Communications Support**
- **Electronic Plan Review and Land Management Information System Replacement**