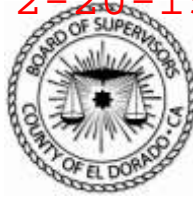


LATE DISTRIBUTION 2-20-15

BOS 2-24-15



## RESOLUTION NO.

## OF THE BOARD OF SUPERVISORS OF THE COUNTY OF EL DORADO

**WHEREAS**, the County of El Dorado is mandated by the State of California to maintain an adequate and proper General Plan; and

**WHEREAS**, on December 9, 2014, the Board of Supervisors directed staff to prepare a Resolution of Intention to amend the General Plan Land Use Maps to contract the Community Regions Lines for Shingle Springs and the Green Valley Corridor using maps submitted by a member of the Shingle Springs community and a member of the northeast El Dorado Hills community, as depicted on the attached maps (Exhibits A-C); and

**WHEREAS**, the maps submitted identify amendments to the Community Regions of El Dorado/Diamond Springs, Cameron Park, Shingle Springs and El Dorado Hills; and

**WHEREAS**, Government Code 65300.5 requires internal consistency between General Plan elements as well as internal consistency within each element; and

**WHEREAS**, proposed revisions depicted on the attached maps (Exhibits A-C) may require other General Plan map, text or policy amendments to comply with Government Code requirements.

**THEREFORE, BE IT HEREBY RESOLVED** that the Board of Supervisors will consider amending the General Plan Land Use Maps for the Shingle Springs, El Dorado/Diamond Springs, Cameron Park and El Dorado Hills Community Regions.

**NOW, THEREFORE, BE IT FURTHER RESOLVED**, upon the Board of Supervisors' determination of the scope and extent of proposed General Plan amendments required for consistency with State law, the Board of Supervisors will hereby authorize the Community Development Agency, Long Range Planning Division, to proceed with the completion of all required environmental review necessary to meet the California Environmental Quality Act requirements and the preparation of a public hearing.

**PASSED AND ADOPTED** by the El Dorado County Board of Supervisors, at a regular meeting of said Board held February 24, 2015, by the following vote:

**PASSED AND ADOPTED** by the Board of Supervisors of the County of El Dorado at a regular meeting of said Board, held the 24<sup>th</sup> day of February 2015, by the following vote of said Board:

Attest:

James S. Mitrison

Clerk of the Board of Supervisors

Ayes:

Noes:

Absent:

By: \_\_\_\_\_

Deputy Clerk

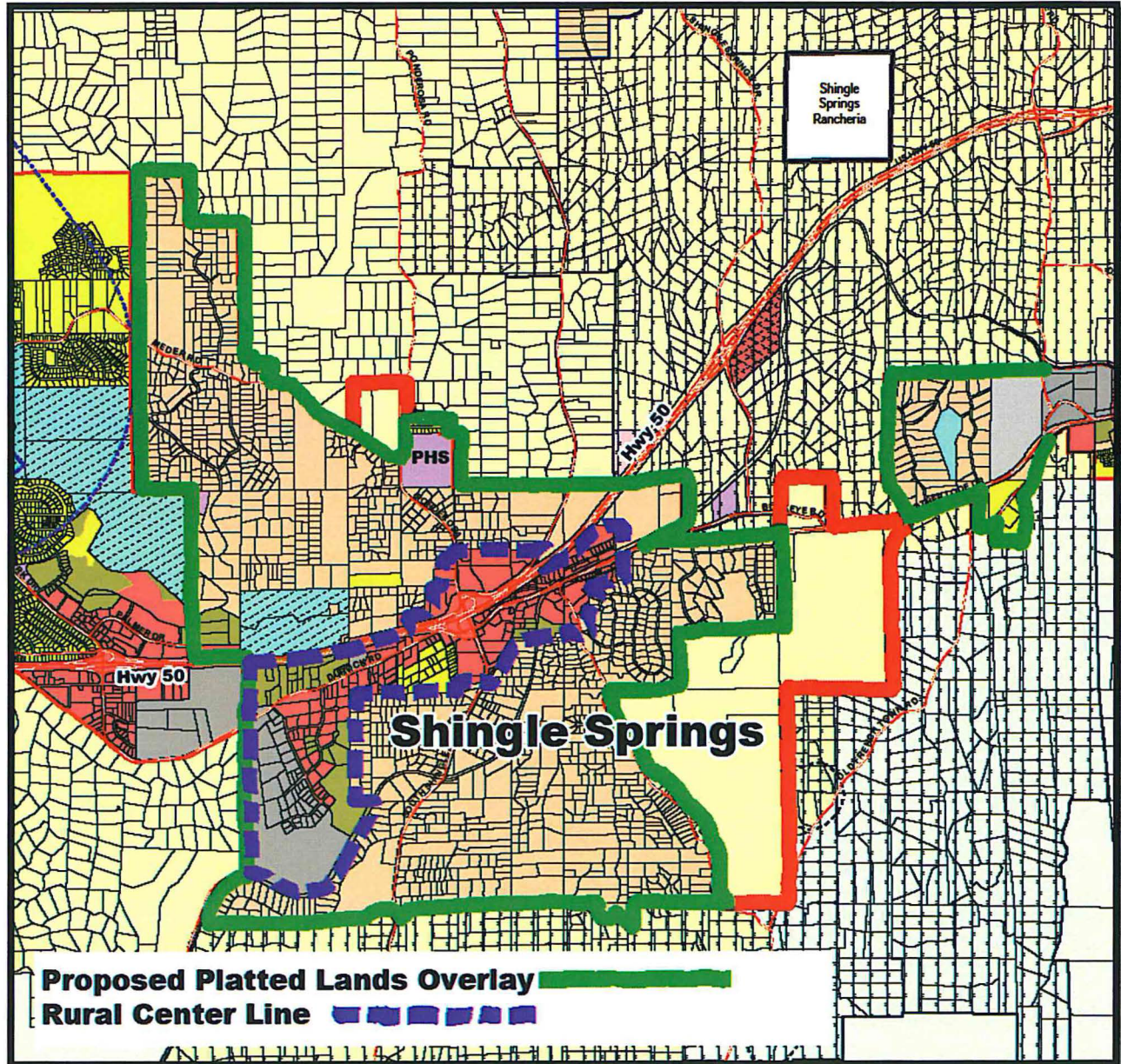
\_\_\_\_\_

Chair, Board of Supervisors



## Proposed Amendments to Shingle Springs Community Region Line

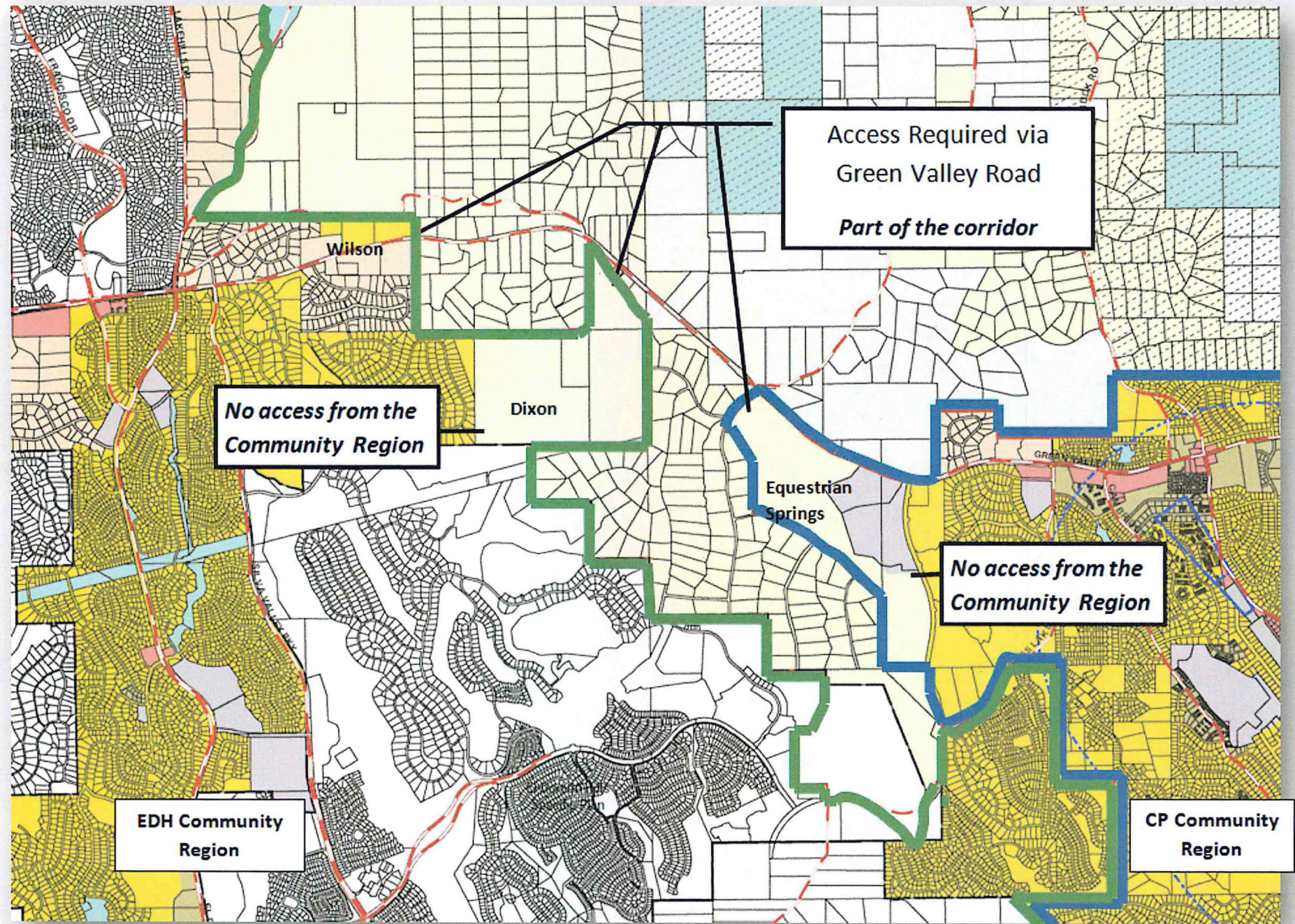
1. This map was presented at a community-wide meeting on November 21, 2013 in Shingle Springs. The community participants voted to accept this map and move forward with collecting thousands of signatures to put this map on the November 2014 ballot.
2. Consistent with Land Use designation in the General Plan and LUPPU
3. Does not require any Land Use changes
4. Does not affect Housing Element
5. Based on suggestion in Roger Trout's White Paper on Community Region Lines





E. Van Dyke # 27 BOS 12/9/14

## Existing Community Region Boundaries - Green Valley Road Corridor



1 of 2



# Proposed Community Region Boundaries - Green Valley Corridor

