



## MEMORANDUM

---

Date: April 27, 2015

Project #: 17666.0

To: Claudia Wade  
County of El Dorado  
2850 Fairlane Court  
Placerville, CA 95667



From: Kittelson and Associates

Project: CIP & TIM Fee Update: Western Slope

Subject: Draft Technical Memorandum 2-3: Existing and Future Deficiency

---

This memorandum summarizes the existing and future deficiency analysis including the Mitigation Fee Act (MFA) nexus justification for the improvement concepts to be advanced as part of the Major Capital Improvement Program (CIP) & Traffic Impact Mitigation (TIM) Fee Update. The analysis includes results for both the existing General Plan as well for the proposed Targeted General Plan Amendment and Zoning Ordinance Update (TGPA-ZOU).

The subsequent sections in this memorandum describe the following:

- Introduction
- Traffic Analysis Methodology
- Traffic Analysis Assumptions
- Level of Service Standards
- Roadway Segment Analysis
- Interchange Analysis
- Parallel Facility Analysis
- Existing Operations Results
- General Plan Operations Results
- Targeted General Plan Amendment Operations Results
- Summary of Roadway Deficiencies
- Interchange Deficiency Analysis Results
- Parallel Roadway Deficiency Analysis Results

## INTRODUCTION

The existing and future deficiency analysis was performed based on the tools, methodologies and assumptions described in this memorandum. These are also described as part of Draft Technical Memorandum 2-1: Analysis Methodology.

## TRAFFIC ANALYSIS METHODOLOGY

This section describes the approaches, tools, and methods used in the analysis.

### Level of Service (LOS)

Circulation Policy TC-Xd of the El Dorado County General Plan provides level of service standards for County-maintained roads and state highways. LOS is a grading system that indicates the quality of service motorists experience on roadway facilities such as intersections or along roadway segments. LOS is a qualitative measure of the effect of a number of factors, including delay, vehicle speeds and travel time, traffic interruptions, freedom to maneuver, driving comfort and convenience. Levels of Service are designated "A" through "F" from best to worst, which cover the entire range of traffic operations that might occur. Level of Service (LOS) "A" through "E" generally represents traffic volumes at less or at roadway capacity, while LOS "F" represents over capacity and/or forced flow conditions.

### County Roadways

Roadway segment LOS was determined by comparing traffic volumes on the study roadway segments with peak hour LOS capacity thresholds. The planning level capacity thresholds for different roadway classifications are shown in Table 1. These capacity thresholds are calculated based on the methodology contained in the Highway Capacity Manual (Transportation Research Board, 2010) (HCM 2010) and these thresholds were applied for the analysis of the 2004 El Dorado County General Plan.

**Table 1. Local Roadways Level of Service LOS Criteria**

Functional Classification	Number of Lanes	Planning Level Volume Threshold (vehicles per hour)				
		LOS A	LOS B	LOS C	LOS D	LOS E
Arterial, Divided	4	-	-	1,850	3,220	3,290
	6	-	-	2,760	4,680	4,710
Arterial, Undivided	2	-	-	850	1,540	1,650
	4	-	-	1,760	3,070	3,130
Multi-Lane Highway	4	-	2,240	3,230	4,250	4,970

Notes:  
 Two-lane highway (and arterial 2-lane) thresholds are based on HCM 2010, Exhibit 15-30, Class II Rolling, .09 K-factor, and D-factor of 0.6  
 Arterial volume thresholds are based on HCM 2010, Exhibit 16-14, K-factor of 0.09, posted speed 45 mi/h  
 Volumes are for both directions

Volume thresholds for 3-lane and 5-lane arterials were derived by linear interpolation between the 2- and 4-lane and between 4- and 6-lane thresholds respectively. Similarly, the volume thresholds for the seven lanes or more arterial will be calculated by linear extrapolation between 4-lane and 6-lane volumes.

### State Highways

State highway LOS was determined using the methodologies for freeway and multilane highways and two-lane highways outlined in the HCM 2010, Chapters 11, 14, and 15. For freeway and multilane highways the calculation of the density of the traffic stream determines LOS. Density measures the average proximity of vehicles to each other in the traffic stream in passenger cars per lane per mile (pcplpm) of roadway. Freeway and multilane highways were evaluated using the HCM 2010 compatible spreadsheet models developed in-house.

For two-lane highways, the LOS calculation is dependent on the class of the roadway. Class I two-lane highways are highways where motorists expect to travel at high speeds. Class II two-lane highways are lower speed highways and serve scenic routes or areas of rugged terrain. Class III two-lane highways serve moderately developed areas with higher densities of local traffic and roadside access. For Class II highways, LOS is determined based on the percent time spent following (PTSF). This measure is calculated as the percentage of vehicles traveling at headways of less than three seconds. For Class III highways, the percent of vehicles traveling at free-flow speed conditions is used to determine LOS. This measure represents the ability of vehicles to travel at the posted speed limit. The two-lane highway analysis will be performed using the Highway Capacity Software (HCS).

Table 2 and Table 3 show the segment LOS criteria for multilane and two-lane highways respectively.

**Table 2. Multi-Lane State Highways LOS Criteria**

LOS	Free Flow Speed (mi/h)	Density (pc/mi/ln)
A	All	>0 -11
B	All	>11-18
C	All	>18-26
D	All	>26-35
E	60	>35-40
	55	>35-41
	50	>35-43
	45	>35-45
F	Demand Exceeds Capacity	
	60	>40
	55	>41
	50	>43
	45	>45

Based on *Highway Capacity Manual*, Transportation Research Board, Washington D.C, 2010, Exhibit 14-4

**Table 3. Two-Lane State Highways LOS Criteria**

LOS	Class II Highways: Percent Time Spent Following (%)	Class III Highways: Percent Free-Flow Speed (%)
A	0-40	>91.7
B	>40-55	>83.3-91.7
C	>55-70	>75.0-83.3
D	>70-85	>66.7-75.0
E	>85	≤66.7

Based on *Highway Capacity Manual*, Transportation Research Board, Washington D.C., 2010, Exhibit 15-3

**US 50**

US 50 mainline segments were evaluated using the methodologies contained in the HCM 2010. The LOS will be reported for each study segment type based on density measures.

Given a limitation of the latest Highway Capacity Software (HCS 2010) for evaluating special purpose lanes (e.g., HOV lanes, auxiliary lanes, truck climbing lanes) freeway mainline segments were evaluated using the HCS 2010 software compatible spreadsheet models developed in-house. The freeway LOS criteria are provided in Table 4.

**Table 4. Freeway Mainline Level of Service (LOS) Criteria**

LOS	Density (passenger cars per lane per mile)
A	≤11
B	>11-18
C	>18-26
D	>26-35
E	>35-45
F	>45 or Demand > Capacity

Based on *Highway Capacity Manual*, Transportation Research Board, Washington D.C., 2010, Exhibit 11-5

## TRAFFIC ANALYSIS ASSUMPTIONS

Generalized operational parameters that will be used for the traffic analysis are provided below:

Ideal Saturation Flow Rate:	Freeway General Purpose Lanes: HCM 2010 Exhibit 10-5; Freeway HOV Lanes: 1,650 <sup>1</sup> vehicles per hour per lane (vphpl); Freeway Auxiliary Lanes > 1 mile: 900 <sup>2</sup> vphpl Freeway Auxiliary Lanes < 1 mile: 400 vphpl
Base Free Flow Speeds:	All: Posted speed limit plus 5 mph
Peak Hour Factor (PHF):	Freeway mainline: Existing: where counts exist: Caltrans Performance Measurement System (PeMS) and Caltrans Published Volumes; where counts do not exist: 0.92; Future: 0.92  State Highways: Existing: where counts exist: PeMs and Caltrans Published Volumes; where counts do not exist: 0.92; Future: 0.92
Peak Hour Directional (D) Factor:	Existing: Caltrans PeMS or Caltrans/County published reports (average weekday) Future: Same as Existing average weekday if available – other: model D Factor
Peak Hour (K) Factor:	Existing: PeMS or Caltrans/County published reports (average weekday) Future: Same as Existing average weekday if available – other: model K Factor
Analysis Conditions:	Annual Average Weekday Conditions
Traffic Volumes:	Existing: Freeways/State Highways: Caltrans AADT published volumes adjusted to average weekday peak hour condition via K and D factors. US 50 between County line and Ponderosa Road: higher volumes between Caltrans AADT published

---

<sup>1</sup> Caltrans High-Occupancy Vehicle Guidelines, Caltrans 2003.

<sup>2</sup> 900 vphpl is a typical default assumption for auxiliary lanes greater than 1 mile and has been accepted by Caltrans in previous reports. See SC101 HOV Report June 2010.

volumes adjusted to average weekday and Caltrans Performance Measurement System (PeMS) average weekday (April)

Existing: Local Roadways: County published data

Future: Counts adjusted by model growth per National Cooperative Highway Research Program 255 method (NCHRP 255)

Lane Width:	All: 12 feet, or consult Caltrans or County Staff
Driver Population Factor:	All: 1.00 – local drivers
Ramp Density (ramps/mi):	Freeway mainline: Aerial measured
Access Density (points/mi):	State Highways/Local Roadways: Aerial measured
Heavy Vehicles:	Freeway/State Highways– Caltrans published Truck Annual Average Daily Traffic (AADT) Data, or 5 percent default (4% on US 50); State Highways/Local Roadways – 5 percent default, or consult Caltrans or County staff

## LEVEL OF SERVICE STANDARDS

The following criteria are established to determine whether the vehicular traffic on a roadway facility exceeds the standard operating conditions.

### County Roadways

Circulation Policy TC-Xd of the El Dorado County General Plan provides level of service standards for County-maintained roads and state highways as follows:

*Level of Service (LOS) for County-maintained roads and state highways within the unincorporated areas of the county shall not be worse than LOS E in the Community Regions or LOS D in the Rural Centers and Rural Regions except as specified in Table TC-2. The volume to capacity ratio of the roadway segments listed in Table TC-2 shall not exceed the ratio specified in that table.*

Roadways in the community regions are evaluated against LOS E standard, while those in the rural regions and rural centers were analyzed against LOS D. Figure 1 shows level of service threshold on the local roadways, with exceptions listed in the Table TC-2 of the County's Circulation Element.

## State Facilities

County’s Policy TC-Xd is applicable not only to the County roadways, but also to the state facilities. As such, traffic conditions for state facilities within the unincorporated areas of the County shall not be worse than LOS E in the community regions and LOS D in the rural center and rural regions, with except to the locations specified in Table TC-2.

### U.S. Highway 50

Table 5 presents LOS thresholds used for US 50. These standards are consistent with the concept LOS established by Caltrans, the County, and the Table TC-2 of the 2004 El Dorado County General Plan.

**Table 5. US 50: Level of Service Thresholds**

Location Description	Begin Post Mile	End Post Mile	Level of Service Threshold
Sacramento/El Dorado County Line to Latrobe Road	0	0.857	LOS E
Latrobe Road to Cambridge Road	0.857	4.962	LOS D
Cambridge Road to Shingle Springs Drive	4.962	8.564	LOS E
Shingle Springs Drive to El Dorado Road	8.564	14.011	LOS D
El Dorado Road to Canal Street	14.011	17.52	LOS E
Canal Street to Mosquito Road	17.52	18.517	LOS F
Mosquito Road to Point View Drive	18.517	20.296	LOS E
Point View Drive to Old Highway, Camino	20.296	23.957	LOS D
Old Highway, Camino to Old Carson Road	23.957	34.219	LOS E
Old Carson Road to Ice House Road	34.219	39.772	LOS D
Ice House Road to Echo Lake Road	39.772	65.619	LOS F

Source: US 50 Transportation Concept Report and Corridor System Management Plan, Caltrans District 3, June 2014, 2004 El Dorado County General Plan, July 2004.

### State Route 49

In the Transportation Concept Report (Caltrans, 2000), the concept LOS is F south of the community of El Dorado and through the City of Placerville. All other segments have a concept LOS E. Since the County adopted exceptions for this roadway, County’s LOS standard for rural community (LOS D) was used as the operational criteria for segments from Amador/El Dorado County Line to Union Mine Road and from SR 193 (south) to SR 193 (north).

### State Route 193

In the Transportation Concept Report (Caltrans, 2011), the concept LOS through El Dorado County is LOS D. The concept LOS is consistent with the County standard.

---

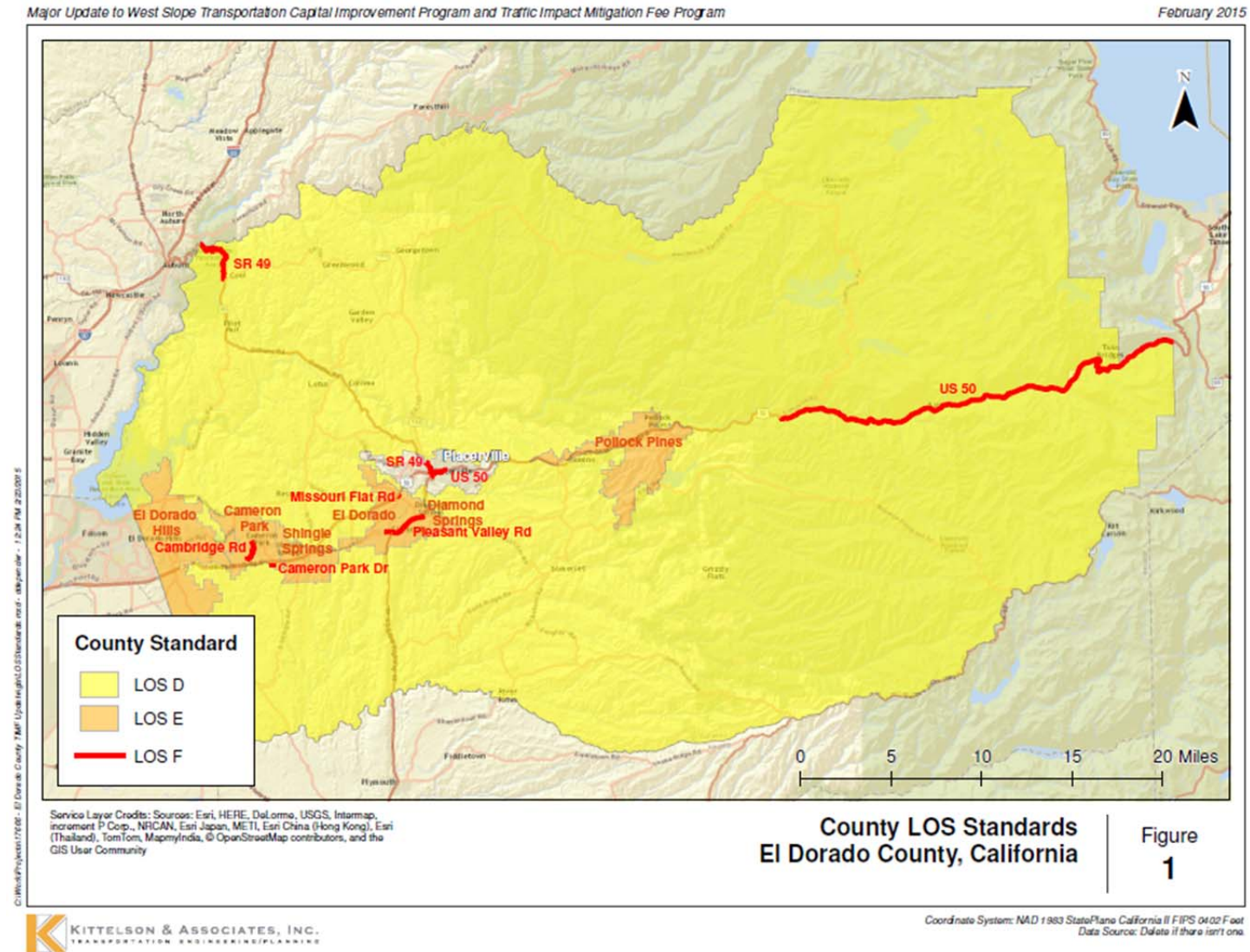
### **State Route 153**

The Transportation Concept Report (Caltrans, 2011) established a concept LOS of E for SR 153 within El Dorado County. Since the roadway runs through a defined rural community, the County's LOS D standard was used as the operational standard for this analysis.

Draft



Figure 1. Level of Service Thresholds for Roadways



## ROADWAY SEGMENT ANALYSIS

This section provides the operations results by facility type. The facility types include County arterial roadways and state highways including freeways, multilane highways, and two-lane highways. A total of 57 County roadways were analyzed spanning nearly 150 segments. The entire state highway system was analyzed (i.e., US 50, SR 49, SR 193, SR 153) spanning 60 segments. Selection of roadways and roadway segmentation was based on a number of criteria including:

- roadway/segment was analyzed in previous TIM fee analysis;
- roadway/segment is currently listed in the County's current Capital Improvement Program;
- roadway/segment was included as part of the County's Travel Demand Model baseline validation analysis;
- roadway/segment is a critical high volume location with known congestion issues; and,
- roadway/segment is considered to have future importance for accommodating planned development growth.

Given the need for all future traffic projections to be adjusted based on the NCHRP 255<sup>3</sup> principles, the choice of County roadway segments to analyze was also influenced by the availability of recent weekday (Tuesday-Thursday) daily and peak hour traffic counts (less than 3 years old). To ensure that "raw" model volumes would not form the basis for determining roadway operations, new traffic counts were performed by the County for all roadways that met the above criteria but did not have a recent traffic count. For US 50, average weekday bi-directional peak hour volumes were based on the most recent Caltrans published Annual Average Daily Traffic volumes using average weekday AM/PM peak hour (K Factor) and AM/PM peak directional splits (D Factor) derived from Caltrans PeMs counts taken during April/May 2014.

All state facilities were analyzed based on the HCM 2010 operational analysis methodology and LOS criteria described in the previous section. All local County roadways were analyzed based the HCM2010 planning method and LOS criteria, also described in the previous section.

The analysis scenarios include:

- 2015 Baseline (Existing) Scenario

To ensure that the future traffic growth resulting from new development growth is not double counted, all built and occupied permits between 2010 (model validation baseline year) and January 1<sup>st</sup> 2015 were reflected in the baseline travel demand model land use to establish an updated model analysis baseline. The 2010 baseline model network was also modified to include only infrastructure improvements either completed or under construction by January 1<sup>st</sup> 2015.

---

<sup>3</sup> For a description of the NCHRP-255 adjustments process – see subsequent Roadway Segment Volume discussion.

- 2035 General Plan Land Use Scenario

This scenario reflects the approved allocation of growth in the County's General Plan – and assumes growth occurring at approximately 1 percent annual average growth rate over the 20-year planning horizon (2015-2035). To ensure that the traffic implications of future development that is anticipated to occur after January 1<sup>st</sup> 2015 is specific to the County's existing roadway infrastructure, this land use scenario was analyzed relative to the modified 2015 model network described above.

- Targeted General Plan Amendment Land Use Scenarios assuming Baseline Network (no-build)

This scenario reflects the proposed growth allocation of the Targeted General Plan Amendment and Zoning Ordinance Update (TGPA-ZOU) – again assuming growth occurring at approximately 1 percent annual average growth rate over the 20-year planning horizon (2015-2035). Given that the TGPA-ZOU is currently going through the environmental process, inclusion of this scenario is simply for information purposes at this time. To ensure that the traffic implications of future development that is anticipated to occur after January 1<sup>st</sup> 2015 is specific to the County's existing roadway infrastructure, this land use scenario was analyzed relative to the modified 2015 model network described above.

## ROADWAY SEGMENT VOLUMES

To address for systematic modeling error, post-processing adjustments must be performed. The recommended procedure is based on the NCHRP Report 255, 1982. NCHRP-255 adjustments entail using model generated link-based growth factors (computed variation between base year and forecast year model volumes) to adjust baseline traffic counts to reflect future conditions. For each count location, traffic growth estimates were generated using both the Ratio and the Difference method and taking the average between the two methods.

Baseline traffic counts and the 2035 future year "raw" and NCHRP 255 adjusted segment volumes used to determine future year operations are provided in Attachment A. For reporting purposes, forecasted volumes were rounded to the nearest ten.

All analysis scenarios reflect AM/PM peak hours during average weekday (Tues-Thurs) traffic conditions. Peak hours are confined to the weekday peak commute hour periods of 7:00 AM to 9:00 AM in the morning and between 4:00 PM – 6:00 PM in the afternoon. These forecasts do not reflect peak season or peak weekend traffic conditions which are primarily dominated by interregional traffic which is not appropriate for analysis of a local fee program.

## INTERCHANGE ANALYSIS

There are a total of 21 interchanges operating along US 50 in El Dorado County including:

1. El Dorado Hills Boulevard Interchange
2. Silva Valley Parkway Interchange (under construction)
3. Bass Lake Road Interchange
4. Cambridge Road Interchange
5. Cameron Park Drive Interchange
6. Ponderosa Road Interchange
7. Shingle Springs Drive Interchange
8. Red Hawk Parkway Interchange
9. Greenstone Road Interchange
10. El Dorado Road Interchange
11. Missouri Flat Road Interchange
12. Placerville Drive (West) Interchange
13. Ray Lawyer Drive Interchange
14. Placerville Drive (East) Interchange
15. Mosquito Road Interchange
16. Schnell School Road Interchange
17. View Point Drive Interchange
18. Smith Flat Road Interchange
19. Cedar Grove/Camino Interchange
20. Pollock Pines/Cedar Grove Interchange
21. Sly Park Road Interchange

Currently, there are eight interchanges included in the TIM fee CIP projects. These interchanges include:

- El Dorado Hills Boulevard Interchange
- Silva Valley Parkway Interchange
- Bass Lake Road Interchange
- Cambridge Road Interchange
- Cameron Park Drive Interchange
- Ponderosa Road Interchange
- El Dorado Road Interchange
- Missouri Flat Road Interchange

A screening assessment of these interchanges was used to reconfirm the deficiency analysis finding documented in completed operationally-based CIP traffic studies. Given that the detailed operational studies of these interchanges were based on the previous version of the El Dorado County travel demand model, the screening assessment focused on the comparative differences between the future year forecasts generated by the previous model version and the current model version at each interchange. For each interchange (both TIM fee CIP and non-TIM fee CIP interchange), ramp and interchange over-crossing link volumes were compared. If the current model yielded equal or higher volumes (in absolute terms) and/or annual growth at a one or more ramps and/or on the overcrossing than the previous model, the previously identified operational issues were considered reconfirmed. However, reconfirmation of deficient conditions for the interchange deficiency does not necessarily mean that all originally identified CIP improvements for a given interchange would be carried forward. The extent of the needed improvement to remedy previously identified operational issues will be determined in the next phase of the Western Slope CIP & TIM Fee Update study.

## PARALLEL FACILITY ANALYSIS

A determination for the need to include parallel facilities into the TIM Fee CIP list was based on the deficiency assessment for US 50 and County roadways on a case by case basis. Given that parallel facilities provide corridor capacity and provide congestion relief to the primary deficient facility, parallel facility improvements are considered candidates for TIM Fee CIP improvements.

## EXISTING OPERATIONS RESULTS

### Existing Operations Results for State Facilities

The LOS analysis results for freeways, multilane highways, and two-lane highways are provided in Attachment B (Tables B-1, B-2, B-3). Based on the results, all state highway facilities are shown to operate within established LOS standards during average weekday AM and PM peak hour conditions.

### Existing Operations Results for Local Roadways

The LOS analysis results for local roadways are presented in Attachment B (Table B-4). Given its geometric and operating characteristics, Green Valley Road segments# 51 and 53-62 were analyzed using the HCM 2010 operational method. No deficiency was identified for the study segments under existing conditions except for the following location:

- Green Valley Road west of Sophia Parkway: AM and PM peaks

## GENERAL PLAN OPERATIONS RESULTS

### General Plan Operations Results for State Facilities

Under the existing General Plan assumptions, the LOS analysis results for freeways, multilane highways, and two-lane highways are provided in Attachment C (Tables C-1, C-2, C-3).

All state facilities except for the US 50 segments listed below are projected to meet the LOS threshold:

- El Dorado/Sacramento County Line to Latrobe Road: eastbound direction in the PM peak
- Latrobe Road to Bass Lake Road: westbound direction in the AM peak
- Bass Lake Road to Cambridge Road: eastbound direction in the PM peak

### General Plan Operations Results for Local Roadways

The LOS analysis results for local roadways under the existing General Plan assumptions are shown in Attachment C (Table C-4).

The following local roadways are projected to exceed the County's LOS standards by 2035:

- Cameron Park Drive south of Hacienda Drive: PM peak
- Green Valley Road west of Sophia Parkway: AM and PM peaks
- Green Valley Road west of Lotus Road: PM peak
- Latrobe Road north of Golden Foothill Boulevard: AM and PM peaks
- White Rock Road west of Windfield Way: AM and PM peaks
- White Rock Road at Sacramento/El Dorado County Line: AM and PM peaks

It should be noted that all of the above locations are located in designated community regions except for Green Valley Road west of Lotus Road.

## TARGETED GENERAL PLAN AMENDMENT (TGPA-ZOU) OPERATIONS RESULTS

### TGPA-ZOU Operations Results for State Facilities

Under the Targeted General Plan Amendment assumptions, the LOS analysis results for freeways, multilane highways, and two-lane highways are provided in Attachment D (Tables D-1, D-2, D-3).

Similar to General Plan results, all state facilities except for the following US 50 segments are projected to operate within LOS thresholds:

- El Dorado/Sacramento County Line to Latrobe Road: eastbound direction in the PM peak
- Latrobe Road to Bass Lake Road: westbound direction in the AM peak
- Bass Lake Road to Cambridge Road: eastbound direction in the PM peak

### TGPA-ZOU Operations Results for Local Roadways

The LOS analysis results for local roadways under the Targeted General Plan Amendment assumptions are shown provided in Attachment D (Table D-4).

The following local roadways are projected to operate with unacceptable LOS:

- Cameron Park Drive south of Hacienda Drive: PM peak
- Green Valley Road west of Sophia Parkway: AM and PM peaks
- Green Valley Road west of Lotus Road: PM peak
- Latrobe Road north of Golden Foothill Boulevard: AM and PM peaks
- Missouri Flat Road south of China Garden Road: PM peak
- White Rock Road west of Windfield Way: AM and PM peaks
- White Rock Road at Sacramento/El Dorado County Line: AM and PM peaks

It should be noted that all of the above locations are located in the community region except for Green Valley Road west of Lotus Road.

## SUMMARY FOR ROADWAYS DEFICIENCIES

A summary of all deficient roadways is shown in Table 6. Under existing conditions, all local roadway segments analyzed were shown to operate within County standards except Green Valley Road segment west of Sophia Parkway. All state facilities were also determined to operate within the established General Plan LOS standards. Under 2035 conditions, three segments of US 50 and six local roadway segments were projected to exceed LOS standards. Results assuming the TGPA-ZOU were similar to the General Plan operations with exception for Missouri Flat Road.

**Table 6. Summary for Deficiency Roadways by Scenario**

Facility Type	Baseline Roadway	2035 General Plan Roadway	2035 TGPA-ZOU Roadway
State Highways	None	1. US 50 (El Dorado/ Sacramento County Line to Latrobe Road) 2. US 50 (Latrobe Road to Bass Lake Road) 3. US 50 (Bass Lake Road to Cambridge Road)	1. US 50 (El Dorado/ Sacramento County Line to Latrobe Road) 2. US 50 (Latrobe Road to Bass Lake Road) 3. US 50 (Bass Lake Road to Cambridge Road)
	<b>Total: 0 segment</b>	<b>Total: 3 segments</b>	<b>Total: 3 segments</b>
Local Roads	1. Green Valley Road (west of Sophia Parkway)	1. Cameron Park Drive (south of Hacienda Drive) 2. Green Valley Road (west of Sophia Parkway) 3. Green Valley Road (west of Lotus Road) 4. Latrobe Road (north of Golden Foothill Parkway) 5. White Rock Road (west of Windfield Way) 6. White Lock Road (at El Dorado/Sacramento County Line)	1. Cameron Park Drive (south of Hacienda Drive) 2. Green Valley Road (west of Sophia Parkway) 3. Green Valley Road (west of Lotus Road) 4. Latrobe Road (north of Golden Foothill Parkway) 5. Missouri Flat Road (south of China Garden Road) 6. White Rock Road (west of Windfield Way) 7. White Rock Road (at El Dorado/Sacramento County Line)
	<b>Total: 1 segment</b>	<b>Total: 6 segments</b>	<b>Total: 7 segments</b>

## INTERCHANGE DEFICIENCY ANALYSIS RESULTS

Based on the comparative analysis of the “old” vs. “new” travel model forecasts at each interchange’s ramps and over-crossing segments, the results re-confirm that the following interchange deficiency assessments (based on previous studies) would continue to hold with the new model (based on a combination of comparing 2035 PM peak hour volumes and average annual growth rates).

- El Dorado Hills Boulevard Interchange
- Silva Valley Parkway Interchange (by virtue of both El Dorado Hills and Bass Lake Road interchanges being deficient)
- Bass Lake Road Interchange

- Cambridge Road Interchange
- Cameron Park Drive Interchange
- Ponderosa Road Interchange
- El Dorado Road Interchange

Comparison results for the Missouri Flat Road Interchange show lower forecasted traffic volumes for all ramps and overcrossing (approximately 75% of the previous model volumes). Based on these lower traffic projections, this comparison indicates that further improvements may not be required at the Missouri Flat Road Interchange. The County has recently commissioned a study of the area called the Missouri Flat Area Master Circulation & Financing Plan Phase II (MC&FP Phase II). The study will identify future land use options and infrastructure needs beyond what is currently assumed in the General Plan. Given that the MC&FP Phase II study will not be completed prior to the completion of this analysis, the “growth potential” assessment in the vicinity of this interchange will not be fully reflected in this analysis. Based on MC&FP Phase II study, further analysis will be performed to determine if and when additional improvements will be required at the Missouri Flat Road Interchange.

All other interchanges with the exception of the Red Hawk Parkway do not have volumes or growth to confirm that they are deficient. Red Hawk Parkway serves only Red Hawk Casino and is constructed only to access the Casino.

A summary of interchange volumes and annual growth rate comparisons between the previous and the current travel models are shown in Attachment E (Table E-1 and Table E-2). Table E-1 represents a comparison for the General Plan scenarios.

## PARALLEL FACILITY DEFICIENCY ANALYSIS RESULTS

Based on identified US 50 mainline and County roadway deficiencies, the following roadway extensions should remain/be added to the TIM Fee CIP list:

- Saratoga Way Extension (based on it parallels a deficient US 50 segment - County Line to Cambridge Road Interchange)
- Country Club Drive (based on it parallels a deficient US 50 segment - County Line to Cambridge Road Interchange)
- Latrobe Connector (based on providing relief to deficient White Rock Road)



ATTACHMENT A  
ROADWAY SEGMENT VOLUME FORECASTS  
(all segments presented in alphabetical order)

Draft

Volume Forecasts for State Facilities

Route	Postmile	Segment Length	Description	2013 Caltrans Volumes Published AADT x K x D				Type	Model Volumes – AM (Interim Step – Not Used for LOS Operations)					Model Volumes – PM (Interim Step – Not Used for LOS Operations)					Final Adjusted Forecast Volumes (Final Volumes Used for LOS Operations)									
				AM EB/NB PHV	AM WB/SB PHV	PM EB/NB PHV	PM WB/SB PHV		EB/NB 2015	EB/NB 2035 GP	EB/NB 2035 TPGA	WB/SB 2015	WB/SB 2035 GP	WB/SB 2035 TGPA- ZOU	EB/NB 2015	EB/NB 2035 GP	EB/NB 2035 TPGA	WB/SB 2015	WB/SB 2035 GP	WB/SB 2035 TGPA- ZOU	EB/NB 2035 GP AM	EB/NB 2035 TGPA- ZOU AM	WB/SB 2035 GP AM	WB/SB 2035 TGPA- ZOU AM	EB/NB 2035 GP PM	EB/NB 2035 TGPA- ZOU PM	WB/SB 2035 GP PM	WB/SB 2035 TGPA- ZOU PM
50	0		SACRAMENTO/EL DORADO COUNTY LINE																									
	0.857		LATROBE ROAD	2470	3790	4749	1879	Fwy	3148	4576	4542	5484	6440	6480	5522	6298	6288	3896	5080	5045	3,750	3,720	4,600	4,640	5,480	5,470	2,760	2,740
50	3.232	2.375	BASS LAKE ROAD	1234	3696	3400	2350	Fwy	1751	3018	2991	3760	5222	5324	3536	4942	4984	2104	3527	3472	2,320	2,300	5,150	5,250	4,780	4,830	3,860	3,800
	1.73		CAMBRIDGE ROAD	1379	3102	3331	2095	Fwy	1947	2940	2844	4027	4849	5044	3671	4785	4829	2401	3671	3581	2,230	2,150	3,830	4,010	4,400	4,440	3,290	3,200
50	4.962	1.608	CAMERON PARK DRIVE	1700	2610	3010	2080	Fwy	2008	2928	2811	3425	3993	4177	3304	4175	4187	2268	3412	3265	2,560	2,450	3,120	3,280	3,850	3,860	3,180	3,040
	1.994		PONDEROSA ROAD	1730	2650	3060	2110	Fwy	1735	2255	2155	3013	3418	3655	2774	3311	3411	1912	2584	2480	2,250	2,150	3,040	3,260	3,630	3,730	2,820	2,710
50	8.564	1.731	SHINGLE SPRINGS	1340	2060	2305	1891	Fwy	1530	2006	1912	2428	2959	3161	2317	2861	2993	1692	2322	2242	1,790	1,700	2,560	2,740	2,850	2,980	2,560	2,480
50	10.295	1.895	GREENSTONE ROAD	1330	2040	2360	1630	Fwy	1530	2006	1912	2428	2959	3161	2317	2861	2993	1692	2322	2242	1,780	1,690	2,530	2,720	2,910	3,050	2,250	2,180
50	12.19	1.821	EL DORADO ROAD	1100	1770	1910	1680	Fwy	1649	2108	1984	2512	2890	3116	2438	2911	3048	1822	2311	2215	1,490	1,380	2,100	2,290	2,340	2,460	2,160	2,060
50	14.011	1.044	MISSOURI FLAT ROAD	1070	1740	1870	1640	Fwy	1637	2092	1974	2391	2762	2984	2329	2746	2881	1745	2192	2114	1,450	1,350	2,070	2,260	2,250	2,370	2,080	2,000
	0.774		PLACERVILLE, FAIRGROUNDS	1220	1980	2130	1870	Fwy	1322	1653	1563	1969	2267	2490	1888	2212	2344	1463	1852	1767	1,540	1,460	2,280	2,510	2,480	2,620	2,320	2,220
50	15.829	1.161	WEST PLACERVILLE	920	1490	1610	1410	Fwy	1280	1566	1516	2184	2249	2454	2041	2316	2487	1500	1795	1782	1,170	1,130	1,550	1,720	1,860	2,010	1,700	1,690
50	16.99	0.43	EB OFF TO MAIN STREET	1140	1850	1990	1750	Fwy	1280	1566	1516	2184	2249	2454	2041	2316	2487	1500	1795	1782	1,410	1,370	1,920	2,100	2,270	2,440	2,070	2,060
	0.1		PLACERVILLE, CANAL STREET	1200	1940	2090	1840	Multi-lane	1367	1758	1713	2266	2594	2748	2162	2686	2782	1667	2152	2142	1,570	1,530	2,250	2,390	2,610	2,710	2,360	2,340
50	17.52	0.147	PLACERVILLE, JCT. RTE. 49	1010	2050	2130	1570	Multi-lane	1367	1758	1713	2226	2373	2425	2162	2686	2782	1814	2047	2009	1,360	1,320	2,200	2,250	2,660	2,750	1,790	1,760
50	17.667	0.121	PLACERVILLE, COLOMA STREET	900	1820	1890	1390	Multi-lane	1397	1690	1678	2029	2245	2388	1969	2324	2483	1553	1856	1847	1,150	1,140	2,030	2,160	2,240	2,400	1,680	1,670
50	17.788	0.244	PLACERVILLE, BEDFORD AVENUE	910	1850	1920	1410	Multi-lane	1397	1690	1678	2029	2245	2388	1969	2324	2483	1553	1856	1847	1,160	1,150	2,060	2,200	2,280	2,430	1,700	1,700
50	18.032	0.485	PLACERVILLE, MOSQUITO ROAD OH (BROADWAY)	760	1530	1590	1170	Multi-lane	1397	1690	1678	2089	2299	2453	1969	2324	2483	1615	1932	1932	990	980	1,720	1,850	1,920	2,060	1,450	1,450
50	18.517	0.473	PLACERVILLE, SCHNELL SCHOOL ROAD	680	1370	1420	1040	Fwy	843	1001	1026	1887	2068	2280	1596	1879	2068	1196	1422	1450	830	850	1,530	1,710	1,690	1,870	1,260	1,280
50	18.99	1.306	PLACERVILLE, POINT VIEW DRIVE	540	1090	1140	840	Fwy	843	1001	1026	1874	2079	2294	1563	1757	1927	1040	1230	1278	670	700	1,260	1,430	1,310	1,460	1,020	1,060
50	20.296	0.445	NEW TOWN ROAD	460	930	970	710	Fwy	821	944	967	1600	1740	1889	1450	1601	1726	927	1060	1096	560	580	1,050	1,160	1,100	1,210	830	860
50	20.741	3.216	JUNCTION OLD HIGHWAY, CAMINO, WEST	460	940	980	720	Multi-lane	842	973	994	1639	1791	1943	1481	1648	1774	964	1108	1145	570	580	1,060	1,180	1,120	1,230	850	880
50	23.957	1.992	EAST CAMINO ROAD	260	840	940	620	Multi-lane	842	973	994	1639	1791	1943	1481	1648	1774	964	1108	1145	350	360	960	1,070	1,080	1,180	740	770
50	25.949	2.893	SAWMILL (POLLOCK PINES)	270	870	980	640	Fwy	842	973	994	1639	1791	1943	1481	1648	1774	964	1108	1145	360	380	990	1,110	1,120	1,230	770	800
50	28.842	2.457	SLY PARK ROAD	380	670	790	460	Fwy	842	973	994	1639	1791	1943	1481	1648	1774	964	1108	1145	480	500	780	890	920	1,020	570	600
50	31.299	2.92	OLD CARSON ROAD	230	410	480	280	Two-lane	842	973	994	1639	1791	1943	1481	1648	1774	964	1108	1145	320	330	510	600	600	680	380	400
50	34.219	5.553	ICEHOUSE ROAD	310	540	650	380	Multi-lane	636	734	752	1179	1321	1429	1043	1182	1270	691	797	824	390	400	650	730	770	840	470	490
50	39.772	6.82	W O ALDER RIDGE ROAD	320	560	670	390	Two-lane	438	516	516	466	536	539	430	498	500	410	484	485	390	390	640	650	760	760	470	470
50	46.592	2.36	SILVER FORK ROAD	320	560	650	380	Two-lane	430	502	503	454	526	528	417	485	487	401	470	470	390	390	650	650	740	740	450	450
50	48.952	4.78	WRIGHTS LAKE ROAD	320	560	650	380	Two-lane	429	502	502	455	531	532	418	489	490	399	469	469	390	390	650	650	750	750	450	450
50	53.732	4.16	STRAWBERRY LN	320	560	650	380	Two-lane	425	495	495	451	529	529	412	483	483	394	460	460	390	390	650	650	750	750	450	450
50	57.892	2.3		320	560	650	380	Two-lane	425	495	495	451	529	529	412	483	483	394	460	460	390	390	650	650	750	750	450	450

Route	Postmile	Segment Length	Description	2013 Caltrans Volumes Published AADT x K x D				Type	Model Volumes – AM (Interim Step – Not Used for LOS Operations)					Model Volumes – PM (Interim Step – Not Used for LOS Operations)					Final Adjusted Forecast Volumes (Final Volumes Used for LOS Operations)									
				AM EB/NB PHV	AM WB/SB PHV	PM EB/NB PHV	PM WB/SB PHV		EB/NB 2015	EB/NB 2035 GP	EB/NB 2035 TPGA	WB/SB 2015	WB/SB 2035 GP	WB/SB 2035 TGPA- ZOU	EB/NB 2015	EB/NB 2035 GP	EB/NB 2035 TPGA	WB/SB 2015	WB/SB 2035 GP	WB/SB 2035 TGPA- ZOU	EB/NB 2035 GP AM	EB/NB 2035 TGPA- ZOU AM	WB/SB 2035 GP AM	WB/SB 2035 TGPA- ZOU AM	EB/NB 2035 GP PM	EB/NB 2035 TGPA- ZOU PM	WB/SB 2035 GP PM	WB/SB 2035 TGPA- ZOU PM
				50	60.192	3.33	SLIPPERY FORD ROAD		320	560	650	380	Two-lane	425	495	495	451	529	529	412	483	483	394	460	460	390	390	650
50	63.522	1.83	SIERRA-AT-TAHOE ROAD	320	560	650	380	Two-lane	425	495	495	451	529	529	412	483	483	394	460	460	390	390	650	650	750	750	450	450
50	65.619		ECHO LAKE ROAD						425	495	495	451	529	529	412	483	483	394	460	460								
49	0		AMADOR/EL DORADO COUNTY LINE																									
49	1.65	6.702	NASHVILLE, SOUTH	144	40	53	156	Two-lane	138	186	184	63	76	80	107	137	136	173	233	225	200	200	60	60	80	80	220	210
49	8.352	1.142	CHINA HILL ROAD	249	68	92	270	Two-lane	138	186	184	63	76	80	107	137	136	173	233	225	320	320	90	90	130	120	350	340
49	9.494	0.147	EL DORADO, UNION MINE ROAD	471	129	175	511	Two-lane	138	186	184	63	76	80	107	137	136	173	233	225	580	580	150	160	220	220	630	620
49	9.641	1.598	EL DORADO, PLEASANT VALLEY ROAD	628	172	233	681	Two-lane	187	263	302	76	95	105	125	164	171	213	297	319	800	880	210	220	290	310	860	910
49	11.239	0.62	MISSOURI FLAT ROAD	883	243	327	958	Two-lane	408	514	546	173	239	245	259	356	357	431	552	567	1,060	1,110	330	330	440	440	1,160	1,180
49	11.859	2.604	DIAMOND SPRINGS, PLEASANT VALLEY ROAD	982	269	364	1064	Two-lane	684	814	812	822	894	900	861	905	912	793	844	826	1,150	1,140	320	330	400	410	1,130	1,110
49	14.463	0.134	PLACERVILLE, FISKE ROAD	406	111	150	440	Two-lane	674	819	805	1085	1154	1213	1067	1200	1226	784	956	956	530	520	150	190	230	250	580	580
49	14.597	0.294	PLACERVILLE, PACIFIC/ MAIN STREETS	916	252	339	993	Two-lane	494	571	545	462	587	618	547	678	695	552	623	606	1,030	990	350	380	450	460	1,100	1,070
49	14.891	0.794	PLACERVILLE, JCT. RTE. 50	353	97	131	383	Two-lane	644	749	732	672	820	836	809	922	913	756	846	827	440	430	190	200	200	460	440	
49	15.685	0.755	JCT. RTE. 193 NORTH	445	122	165	483	Two-lane	466	427	410	565	587	636	745	791	787	368	482	518	450	450	140	170	200	200	620	660
49	16.44	2.98	DIANA STREET	308	84	114	334	Two-lane	261	321	388	487	531	560	503	553	597	331	375	422	380	450	110	130	150	180	380	430
49	19.42	3.445	GOLD HILL ROAD	229	63	85	248	Two-lane	197	210	226	322	349	368	335	367	399	238	266	291	250	270	80	100	110	130	280	310
49	22.865	1.615	COLOMA, JCT. RTE. 153 WEST	147	40	55	160	Two-lane	144	167	179	277	299	317	284	323	350	182	215	235	180	190	60	70	80	100	200	210
49	24.48	3.71	MARSHALL GRADE ROAD (TO GEORGETOWN)	353	97	131	383	Two-lane	182	210	225	363	400	455	370	426	479	241	280	306	400	420	130	160	170	210	440	470
49	28.19	6.276	HASTINGS CREEK BRIDGE	229	63	85	248	Two-lane	194	261	274	268	331	371	297	394	437	239	332	356	310	320	110	130	150	180	350	370
49	34.466	3.767	COOL, JCT. RTE. 193 EAST	229	63	85	248	Two-lane	118	141	154	226	269	297	235	307	340	151	200	222	270	290	100	110	140	160	320	350
49	38.233		EL DORADO/PLACER COUNTY LINE	563	154	208	610	Two-lane	418	512	517	358	433	444	382	472	481	402	499	504	680	680	210	220	280	290	740	740
153	0	0	JCT. RTE. 49						330	432	430	323	408	408	357	455	455	354	458	456	0	0	0	0	0	0	0	0
153	0.12	0.12	COLD SPRINGS ROAD	140	52	91	149	Two-lane	187	263	302	76	95	105	125	164	171	213	297	319	210	250	70	80	130	140	230	240
153	0.55	0.55	MARSHALL'S MONUMENT	5	4	5	6	Two-lane													10	10	10	10	10	10	10	10
193	0	0.856	COOL, JCT. RTE. 49																									
193	0.856	1.313	AMERICAN RIVER ROAD	120	329	324	161	Two-lane	153	185	200	419	495	554	357	430	479	193	235	255	150	170	400	450	400	440	200	220
193	2.169	10.021	AUBURN LAKE TRAIL ROAD	144	397	391	194	Two-lane	146	172	184	385	442	487	333	390	428	184	219	234	170	190	460	510	460	500	230	250
193	12.19	0.509	EVERGREEN COURT ROAD	111	306	302	150	Two-lane	146	172	184	385	442	487	333	390	428	184	219	234	140	150	360	400	360	400	190	200
193	12.699	3.406	GEORGETOWN, LOWER MAIN STREET	109	300	296	147	Two-lane	101	110	118	80	90	95	94	104	110	108	117	124	120	130	330	340	320	340	160	170
193	16.105	3.295	BLACK OAK MINE ROAD	215	59	76	221	Two-lane	64	66	72	73	78	84	75	81	86	65	69	75	220	240	70	70	90	90	230	250
193	19.4	7.55	GARDEN VALLEY ROAD	133	37	47	137	Two-lane	42	45	50	54	56	57	51	53	55	44	48	53	140	150	40	40	50	60	150	160
193	26.95		JCT. RTE. 49	182	50	64	187	Two-lane	144	158	179	54	63	65	73	83	90	140	155	175	200	230	60	70	80	80	210	230

Volume Forecasts for County Roadways

NAME	LOCATION	Model Two-Way Volume (Interim Step – Not Used for LOS Operations)								Final Adjusted Two-Way Forecast Volume (Final Volumes – Used for LOS Operations)					
		Count Two-Way Volume		2015 AM		2015 PM		2035 GP AM		2035 GP PM		2035 TGPA-ZOU AM		2035 TGPA-ZOU PM	
		2014 AM	2014 PM	2015 AM	2015 PM	2035 GP AM	2035 GP PM	2035 TGPA-ZOU AM	2035 TGPA-ZOU PM	2035 GP AM	2035 GP PM	2035 TGPA-ZOU AM	2035 TGPA-ZOU PM		
Bass Lake Rd	North of Country Club Dr	1028	966	910	980	1333	1362	1072	1116	1,480	1,350	1,200	1,110		
Bass Lake Rd	South of Green Valley Rd	539	448	701	704	1072	1041	953	949	870	730	770	650		
Bassi Rd	West of Lotus Rd	83	107	40	51	49	59	53	64	100	130	110	130		
Bedford Ave	At City Limit	35	46	47	52	51	56	55	60	40	50	50	60		
Broadway	At City Limit	256	309	536	557	658	702	735	774	350	430	410	480		
Bucks Bar Rd	South Pleasant Valley Rd	411	412	456	465	524	550	575	594	480	500	530	540		
Bucks Bar Rd	North of Mt Aukum Rd	294	307	404	420	463	497	524	548	350	380	400	420		
Cambridge Rd	North of Country Club Dr	571	632	780	814	1064	1226	1007	1186	820	1,000	770	970		
Cambridge Rd	South of Country Club Dr	584	709	986	1020	1258	1268	1185	1238	810	920	750	900		
Cambridge Rd	At US 50 Overcrossing	641	810	333	650	620	937	657	910	1,070	1,140	1,120	1,110		
Cambridge Rd	South of Green Valley Rd	379	394	517	567	867	921	784	851	690	700	610	640		
Cambridge Rd	North of Oxford Rd	339	366	554	593	705	799	656	761	470	540	430	510		
Cameron Park Dr	North of Coach Ln	1155	2022	1592	2145	2312	3204	2301	3141	1,780	3,060	1,770	2,990		
Cameron Park Dr	South of Hacienda Dr	1236	1619	1388	1567	1634	1792	1593	1763	1,470	1,850	1,440	1,820		
Cameron Park Dr	South of Green Valley Rd	685	781	834	903	1041	1096	1038	1087	880	970	870	960		
Cameron Park Dr	North of Mira Loma Dr	929	1180	896	988	1160	1256	1113	1212	1,200	1,480	1,150	1,430		
Cameron Park Dr	South of Robin Ln	533	901	607	812	974	1267	996	1278	880	1,390	900	1,400		
Cameron Park Dr	North of Robin Ln	456	773	958	1335	1540	2148	1548	2140	890	1,420	900	1,410		
Carson Rd	East of Barkley Rd	189	269	365	412	412	465	441	494	230	320	250	340		
Carson Rd	At Carson Ct	82	149	24	43	31	65	32	67	100	200	100	210		
Carson Rd	West of Gatlin Rd	57	137	43	52	78	87	81	90	100	200	110	210		
Carson Rd	East of Ponderosa Way	139	208	163	178	172	189	183	197	150	230	160	230		
China Garden Rd	East of Missouri Flat Rd	220	320	47	62	162	109	124	154	340	470	450	600		
China Garden Rd	North of SR 49	82	71	443	453	633	838	678	883	120	140	130	140		
Cold Springs Rd	South of Gold Hill Rd	188	289	190	227	228	259	289	302	230	330	290	380		
Cold Springs Rd	South of SR 153	120	187	194	203	223	235	275	275	150	220	190	260		
Country Club Dr	East of Bass Lake Rd	456	320	537	525	983	818	969	835	870	560	860	570		
Country Club Dr	West of Knollwood Dr	515	277	269	302	566	506	478	542	950	480	830	510		
Country Club Dr	East of Cambridge Rd	222	266	329	406	941	876	858	911	640	580	580	600		
Country Club Dr	East of Merrychase Dr	381	197	481	424	715	593	661	629	600	330	550	350		
Country Club Dr	West of Cameron Park Dr	254	375	292	381	732	731	611	697	640	730	560	690		
Durock Rd	West of S. Shingle Rd	365	568	634	781	993	1103	990	1126	650	850	650	870		
El Dorado Hills Blvd	South of Wilson Blvd	1951	1895	1748	1967	1825	1889	1832	1899	2,040	1,900	2,050	1,900		
El Dorado Hills Blvd	North of Wilson Blvd	2018	1858	1608	1728	1550	1533	1581	1560	2,020	1,860	2,020	1,860		
El Dorado Hills Blvd	North of Saratoga Way	2353	2458	3458	4174	3674	4193	3684	4195	2,540	2,480	2,550	2,480		
El Dorado Hills Blvd	South of Green Valley Rd	448	367	464	518	452	462	472	461	450	370	460	370		
El Dorado Hills Blvd	North of Harvard Way	1627	1497	1520	1553	1620	1651	1593	1632	1,740	1,600	1,710	1,580		
El Dorado Rd	South of US 50	381	388	416	498	578	760	547	707	540	630	510	580		
El Dorado Rd	North of Pleasant Valley Rd	197	185	115	140	276	365	264	342	420	410	400	390		
El Dorado Rd	South of Missouri Flat Rd	160	185	213	311	313	528	295	488	250	360	240	330		
Enterprise Dr	East of Forni Rd	227	309	40	46	50	67	46	69	270	390	250	400		
Fairplay Rd	South of Mt Aukum Rd	144	162	207	212	228	240	246	257	170	190	180	210		
Forni Rd	North of SR 49	322	280	39	48	61	83	57	80	430	400	410	400		
Forni Rd	West of Arroyo Vista Way	85	141	94	126	109	145	106	143	100	170	100	160		
Francisco Dr	South of Green Valley Rd	1050	1162	83	88	98	93	101	93	1,160	1,200	1,180	1,200		
Gold Hill Rd	East of Lotus Road	231	142	142	164	186	204	215	220	290	180	330	200		
Gold Hill Rd	East of Cold Springs Rd	64	45	67	64	81	76	87	88	80	60	90	70		
Gold Hill Rd	West of Cold Springs Rd	243	144	141	164	173	189	200	213	290	170	330	200		
Green Valley Rd	West of Sophia Pkwy	1881	2066	1735	1727	2712	2904	2747	2921	2,910	3,360	2,940	3,380		
Green Valley Rd	West of Weber Creek	277	376	126	155	175	221	199	218	360	490	400	490		
Green Valley Rd	West of Silva Valley Rd	951	1119	1417	1451	1634	1733	1658	1721	1,140	1,370	1,160	1,360		
Green Valley Rd	East of Mormon Island Dr	1998	2480	2112	1956	2703	2819	2727	2862	2,580	3,460	2,600	3,510		
Green Valley Rd	West of Mormon Island Dr	2005	2481	2112	1956	2703	2819	2727	2862	2,590	3,460	2,610	3,510		
Green Valley Rd	East of Sophia Pkwy	2020	2475	2136	1990	2754	2899	2774	2935	2,630	3,500	2,650	3,540		
Green Valley Rd	East of Francisco Dr	1208	1071	1265	1213	1767	1782	1794	1836	1,700	1,610	1,730	1,660		
Green Valley Rd	West of Bass Lake Rd	1289	945	969	957	1193	1217	1168	1201	1,550	1,210	1,530	1,190		
Green Valley Rd	East of Bass Lake Rd	1138	996	1366	1390	1781	1829	1727	1777	1,520	1,380	1,470	1,330		
Green Valley Rd	East of La Crescenta Dr	673	596	324	329	633	668	602	638	1,150	1,080	1,110	1,040		
Green Valley Rd	East of Deer Valley Rd	407	403	250	260	405	441	413	448	620	640	630	650		
Green Valley Rd	West of Lotus Rd	607	709	782	755	1080	1127	1155	1189	880	1,070	940	1,130		
Green Valley Rd	West of Greenstone Rd	368	379	293	310	418	483	422	494	510	580	520	590		
Green Valley Rd	West of Missouri Flat Rd	868	740	360	367	410	450	413	471	960	870	960	900		
Green Valley Rd	West of Campus Dr	392	424	360	367	410	450	413	471	450	520	450	540		
Greenstone Rd	North of US 50	257	246	299	320	411	458	428	472	370	370	380	380		
Greenstone Rd	North of Mother Lode Dr	93	112	59	64	97	111	97	111	150	180	150	180		
Grizzly Flat Rd	East of Mt Aukum Rd	151	199	181	189	229	238	267	276	200	250	240	290		

NAME	LOCATION	Count Two-Way Volume		Model Two-Way Volume (Interim Step – Not Used for LOS Operations)						Final Adjusted Two-Way Forecast Volume (Final Volumes – Used for LOS Operations)			
		2014 AM	2014 PM	2015 AM	2015 PM	2035 GP AM	2035 GP PM	2035 TGPA-ZOU AM	2035 TGPA-ZOU PM	2035 GP AM	2035 GP PM	2035 TGPA-ZOU AM	2035 TGPA-ZOU PM
Harvard Way	East of El Dorado Hills Blvd	970	483	803	708	1162	958	1099	958	1,370	700	1,300	700
Harvard Way	West of Silva Valley Pkwy	871	561	553	405	886	704	810	671	1,300	920	1,210	880
Ice House Rd	North of US 50	37	71	9	9	9	9	9	9	40	80	40	80
Latrobe Rd	North of County Line	241	329	326	349	479	488	505	518	380	470	400	500
Latrobe Rd	South of Investment Blvd	373	449	740	652	678	670	721	712	380	470	380	510
Latrobe Rd	North of Golden Foothill Pkwy	2123	2287	2199	2398	3640	3879	3518	3778	3,540	3,740	3,420	3,640
Latrobe Rd	North of Investment Blvd	802	971	657	569	572	559	610	596	810	980	810	1,010
Latrobe Rd	North of White Rock Rd	2557	2695	2836	3062	3327	3057	3154	3058	3,030	2,700	2,860	2,700
Lotus Rd	South of Thompson Hill Rd	346	441	496	475	601	616	693	708	440	580	520	670
Lotus Rd	North Green Valley Rd	565	703	796	782	1225	1303	1320	1394	940	1,200	1,020	1,290
Lotus Rd	South of SR 49	260	354	469	468	588	622	675	712	360	490	430	570
Luneman Rd	West of Lotus Rd	333	196	228	247	262	278	292	322	380	230	420	270
Marshall Rd	East of SR 49	315	315	273	263	333	325	389	378	390	390	440	450
Marshall Rd	East of Garden Valley Rd	432	408	354	355	419	422	494	498	510	480	590	570
Marshall Rd	South of Lower Main St	37	50	232	228	256	254	298	290	60	70	80	90
Meder Rd	East of Cameron Park Dr	528	568	444	423	722	820	705	815	840	1,040	820	1,030
Meder Rd	West of Ponderosa Rd	420	436	389	351	526	538	454	488	570	650	490	590
Missouri Flat Rd	West of El Dorado Rd	844	714	371	410	330	414	320	421	850	720	850	730
Missouri Flat Rd	East of El Dorado Rd	801	835	511	539	514	602	499	611	810	920	810	930
Missouri Flat Rd	South of China Garden Rd	1174	1640	1159	1434	1367	1431	1316	1447	1,390	1,640	1,340	1,660
Missouri Flat Rd	North of SR 49	1047	1307	1013	1240	1187	1179	1125	1203	1,230	1,310	1,170	1,310
Missouri Flat Rd	North of Forni Rd	1876	2686	1884	2228	2238	2635	2227	2673	2,230	3,140	2,220	3,180
Missouri Flat Rd	South of Forni Rd	1600	1986	1377	1648	1692	1995	1687	2034	1,950	2,370	1,940	2,420
Mormon Emigrant Trl	East of Sly Park Rd	38	63	160	165	214	221	241	247	80	110	60	130
Mosquito Rd	At City Limit	335	346	501	529	701	742	745	785	510	530	540	560
Mosquito Rd	South of American River Bridge	90	110	131	126	178	173	213	207	130	160	160	190
Mother Lode Dr	West of Sunset Ln	950	1068	1274	1352	1511	1573	1495	1571	1,160	1,270	1,150	1,270
Mother Lode Dr	West of Pleasant Valley Rd	642	757	791	827	1051	1151	1068	1150	880	1,070	900	1,070
Mother Lode Dr	East of Pleasant Vally Rd	229	347	193	238	230	301	216	276	270	430	260	400
Mt Aukum Rd	North of County Line	114	137	33	49	52	64	53	66	160	170	160	170
Mt Aukum Rd	South of Bucks Bar Rd	252	297	377	401	437	468	479	512	310	360	340	400
Mt Aukum Rd	South of Pleasant Valley Rd	190	318	282	322	346	378	378	424	250	380	280	420
Mt Murphy Rd	North of SR 49	26	25	312	339	343	382	397	440	50	50	40	40
Mt Murphy Rd	South of Marshall Rd	54	97	186	199	207	228	241	265	70	120	90	150
Newtown Rd	North of Pioneer Hill Rd	231	240	347	355	418	424	491	496	300	300	360	360
Newtown Rd	East of Broadway Rd	299	323	420	430	490	500	562	570	360	390	430	450
Newtown Rd	North of Pleasant Valley Rd	215	223	262	270	361	335	402	388	310	290	350	340
Old French Town Rd	South of Mother Lode Dr	83	104	147	158	224	241	188	204	150	180	120	150
Omo Ranch Rd	East of Mt Aukum Rd	63	56	52	59	59	66	64	71	70	70	80	70
Oxford Rd	East of Salida Way	262	335	537	619	913	1059	817	985	550	680	480	620
Palmer Dr	East of Cameron Park Dr	449	873	574	786	777	1046	773	1038	630	1,150	630	1,140
Patterson Dr	South of Pleasant Valley Rd	293	407	378	412	524	579	459	511	430	580	370	510
Pleasant Valley Rd	East of Mother Lode Dr	561	603	598	589	821	850	852	875	780	870	810	900
Pleasant Valley Rd	East of Bucks Bar Rd	473	443	391	411	503	517	523	554	600	560	620	600
Pleasant Valley Rd	West of Oak Hill Rd	901	970	873	906	922	956	958	1031	960	1,030	990	1,100
Pleasant Valley Rd	East of SR 49	1075	1203	1367	1470	1566	1708	1603	1768	1,260	1,420	1,290	1,480
Pleasant Valley Rd	East of Cedar Ravine Rd	861	860	825	854	1004	1046	1075	1126	1,050	1,060	1,120	1,140
Pleasant Valley Rd	East of Newtown Rd	429	442	400	409	495	498	550	564	530	540	590	610
Pony Express Trl	East of Carson Rd	203	262	244	258	258	274	272	291	220	280	230	300
Pony Express Trl	East of Gilmore Rd	237	414	455	495	497	541	538	581	270	460	310	500
Pony Express Trl	West of Forebay Rd	251	492	261	337	276	352	284	362	270	510	280	530
Salmon Falls Rd	At New York Creek Bridge	191	244	490	453	652	571	777	680	310	340	400	420
Salmon Falls Rd	South of Malcolm Dixon Rd	612	590	1013	1034	1254	1218	1284	1299	810	740	830	800
Salmon Falls Rd	South of Pedro Hill Rd	92	100	329	299	459	395	552	476	180	170	160	220
Salmon Falls Rd	South of Rattlesnake Bar Rd	31	38	329	299	459	395	552	476	50	60	60	70
Serrano Pkwy	West of Bass Lake Rd	491	466	707	718	1304	1184	1110	1071	1,000	850	840	760
Shingle Springs Dr	South of US 50	475	221	152	178	402	583	399	565	1,000	630	990	610
Silva Valley Pky	North of US 50	776	1052	782	727	2013	2045	1966	1974	2,000	2,370	1,960	2,300
Silva Valley Pky	South of Green Valley Rd	603	554	483	528	563	603	579	588	700	640	720	620
Silva Valley Pky	North of Havard Way	886	848	361	361	563	509	558	494	1,240	1,100	1,230	1,080
Silva Valley Pky	South of Serrano Pkwy	1185	975	605	521	1023	1039	1013	992	1,810	1,720	1,790	1,660
Snows Rd	North of Newtown Rd	80	83	105	123	121	141	135	152	100	100	110	110
Snows Rd	South of Carson Rd	337	212	221	200	242	220	258	235	370	240	390	250
South Shingle Rd	East of Latrobe Rd	98	75	946	667	229	286	254	300	100	80	100	80
South Shingle Rd	North of Barnett Ranch	192	217	459	433	323	379	340	393	200	220	200	220
South Shingle Rd	South of Sunset Ln	434	555	541	542	522	655	554	670	440	670	450	690
Starbuck Rd	North of Green Valley Rd	113	149	115	130	158	176	163	183	160	200	170	210
Union Ridge Rd	West of Hassler Rd	32	42	26	31	63	69	66	72	70	90	80	100
Wentworth Springs Rd	West of Quintette Rd	29	50	38	36	41	40	44	43	40	60	40	60

NAME	LOCATION	Count Two-Way Volume		Model Two-Way Volume (Interim Step – Not Used for LOS Operations)						Final Adjusted Two-Way Forecast Volume (Final Volumes – Used for LOS Operations)			
		2014 AM	2014 PM	2015 AM	2015 PM	2035 GP AM	2035 GP PM	2035 TGPA-ZOU AM	2035 TGPA-ZOU PM	2035 GP AM	2035 GP PM	2035 TGPA-ZOU AM	2035 TGPA-ZOU PM
White Rock Rd	At County Line	834	1026	1107	777	2966	3124	2821	3045	2,240	3,380	2,130	3,300
White Rock Rd	East of Latrobe Rd	1036	1444	1359	1577	1409	1634	1407	1656	1,090	1,500	1,080	1,520
White Rock Rd	West of Latrobe Rd	999	1121	1137	893	2607	2690	2456	2652	2,300	2,920	2,160	2,890
Latrobe Rd	North of Golden Foothill Pkwy South	1601	1819	1480	1516	2025	2134	1977	2066	2,170	2,500	2,120	2,430
Serrano Pkwy	East of Silva Valley Pkwy	1424	947	1316	1213	1919	1689	1707	1577	2,060	1,370	1,840	1,280
Bass Lake Rd	North of Serrano Pkwy	824	816	933	941	1227	1265	1161	1192	1,110	1,120	1,040	1,050
French Creek Rd	North of Old French Town Rd	178	214	252	261	344	291	337	302	260	250	260	260
Ponderosa Rd	North of Jackpine Rd	147	128	38	33	41	36	49	37	160	140	180	140
N Shingle Rd	South of Green Valley Rd	414	440	623	582	763	755	829	815	540	600	590	650
Mother Lode Dr	East of French Creek Rd	904	809	928	911	1068	1102	1053	1074	1,050	990	1,030	970
Rock Creek Rd	East of SR 193	19	18	1	1	1	1	2	2	40	40	40	40
White Rock Rd	West of Windfield Way	824	816	1290	997	3035	3245	2915	3177	1,940	2,660	1,870	2,600
El Dorado Hills Blvd	South of Francisco Dr	1324	1299	1220	1277	1276	1327	1277	1323	1,390	1,350	1,390	1,350
Sly Park Rd	East of Mt Aukum Rd	242	272	233	247	273	290	305	324	290	320	320	360
Sly Park Rd	East of Mormon Emigrant Trail	234	324	398	414	475	491	524	540	300	400	340	440
Sly Park Rd	South of Pony Express Trail	581	734	417	504	450	539	475	567	630	780	660	820

Draft



ATTACHMENT B

EXISTING OPERATIONS RESULTS

(all segments presented in alphabetical order)

DRAFT

**Table B-1. Existing LOS Results for US 50 Freeway Sections**

Route	Seg	EB Postmile	WB Postmile	Segment Length	East of Segment	West of Segment	LOS Threshold	Eastbound						Westbound					
								AM Peak			PM Peak			AM Peak			PM Peak		
								Avg. Speed (mph)	Density <sup>1</sup> (pcpmpl)	LOS <sup>2</sup>	Avg. Speed (mph)	Density <sup>1</sup> (pcpmpl)	LOS <sup>2</sup>	Avg. Speed (mph)	Density <sup>1</sup> (pcpmpl)	LOS <sup>2</sup>	Avg. Speed (mph)	Density <sup>1</sup> (pcpmpl)	LOS <sup>2</sup>
50	1	0	0.857	0.857	SACRAMENTO/EL DORADO COUNTY LINE	LATROBE ROAD	E	65.00	13.95	B	64.51	24.59	C	63.91	26.24	D	65.00	12.38	B
50	2	0.857	3.232	2.375	LATROBE ROAD	BASS LAKE ROAD	D	65.00	6.97	A	65.00	17.46	B	64.22	25.46	C	65.00	15.49	B
50	3	3.232	4.962	1.73	BASS LAKE ROAD	CAMBRIDGE ROAD	D	65.00	11.03	B	64.01	26.00	C	65.00	21.12	C	65.00	13.82	B
50	4	4.962	6.57	1.608	CAMBRIDGE ROAD	CAMERON PARK DRIVE	E	65.00	13.60	B	64.85	23.18	C	65.00	17.77	B	65.00	13.71	B
50	5	6.57	8.564	1.994	CAMERON PARK DRIVE	PONDEROSA ROAD	E	65.00	15.16	B	63.93	26.19	D	64.90	22.84	C	65.00	17.58	B
50	6	8.564	10.295	1.731	PONDEROSA ROAD	SHINGLE SPRINGS	D	65.00	11.74	B	65.00	19.40	C	65.00	17.73	B	65.00	15.76	B
50	7	10.295	12.19	1.895	SHINGLE SPRINGS	GREENSTONE ROAD	D	65.00	11.65	B	65.00	19.86	C	65.00	17.56	B	65.00	13.58	B
50	8	12.19	14.011	1.821	GREENSTONE ROAD	EL DORADO ROAD	D	65.00	9.64	A	65.00	16.08	B	65.00	15.23	B	65.00	14.00	B
50	9	14.011	15.055	1.044	EL DORADO ROAD	MISSOURI FLAT ROAD	E	65.00	9.03	A	65.00	15.72	B	65.00	15.59	B	65.00	14.27	B
50	10	15.055	15.829	0.774	MISSOURI FLAT ROAD	PLACERVILLE, FAIRGROUNDS	E	65.00	7.12	A	65.00	11.94	B	65.00	12.28	B	65.00	10.85	A
50	11	15.829	16.99	1.161	PLACERVILLE, FAIRGROUNDS	WEST PLACERVILLE	E	65.00	7.77	A	65.00	13.54	B	65.00	13.35	B	65.00	12.27	B
50	12	16.99	17.42	0.43	WEST PLACERVILLE	EB OFF TO MAIN STREET	E	65.00	9.62	A	65.00	16.73	B	65.00	16.58	B	65.00	15.23	B
50	18	18.517	18.99	0.473	PLACERVILLE, MOSQUITO ROAD	PLACERVILLE, SCHNELL SCHOOL ROAD	E	55.00	7.16	A	55.00	14.96	B	55.00	14.43	B	55.00	10.95	A
50	19	18.99	20.296	1.306	PLACERVILLE, SCHNELL SCHOOL ROAD	PLACERVILLE, POINT VIEW DRIVE	E	55.00	5.69	A	55.00	12.01	B	55.00	11.48	B	55.00	8.85	A
50	20	20.296	20.741	0.445	PLACERVILLE, POINT VIEW DRIVE	NEW TOWN ROAD	D	65.00	4.10	A	65.00	8.64	A	65.00	8.29	A	65.00	6.33	A
50	23	25.949	28.842	2.893	EAST CAMINO ROAD	SAWMILL (POLLOCK PINES)	E	65.00	2.42	A	65.00	8.80	A	65.00	7.81	A	65.00	5.75	A
50	24	28.842	31.299	2.457	SAWMILL (POLLOCK PINES)	SLY PARK ROAD	E	65.00	3.40	A	65.00	7.07	A	65.00	6.00	A	65.00	4.12	A

<sup>1</sup> Density expressed in pc/mi/ln, passenger cars per mile per lane  
<sup>2</sup> Level of service is based on density as described in Basic Freeway Segment, Chapter 11, HCM 2010

**Table B-2. Existing LOS Results for US 50 Multilane Highway Sections**

Route	Seg	EB Postmile	WB Postmile	Segment Length	East of Segment	West of Segment	LOS Threshold	Eastbound						Westbound					
								AM Peak			PM Peak			AM Peak			PM Peak		
								Avg. Speed (mph)	Density <sup>1</sup> (pcpmpl)	LOS <sup>2</sup>	Avg. Speed (mph)	Density <sup>1</sup> (pcpmpl)	LOS <sup>2</sup>	Avg. Speed (mph)	Density <sup>1</sup> (pcpmpl)	LOS <sup>2</sup>	Avg. Speed (mph)	Density <sup>1</sup> (pcpmpl)	LOS <sup>2</sup>
50	13	17.42	17.52	0.1	EB OFF TO MAIN STREET	PLACERVILLE, CANAL STREET	E	45.00	15.36	B	45.00	26.76	D	45.00	24.84	C	45.00	23.56	C
50	14	17.52	17.667	0.147	PLACERVILLE, CANAL STREET	PLACERVILLE, JCT. RTE. 49	F	45.00	8.62	A	45.00	18.18	C	45.00	26.24	D	45.00	20.09	C
50	15	17.667	17.788	0.121	PLACERVILLE, JCT. RTE. 49	PLACERVILLE, COLOMA STREET	F	45.00	7.69	A	45.00	16.18	B	45.00	23.38	C	45.00	17.84	B
50	16	17.788	18.032	0.244	PLACERVILLE, COLOMA STREET	PLACERVILLE, BEDFORD AVENUE	F	45.00	7.78	A	45.00	16.42	B	45.00	23.76	C	45.00	18.11	C
50	17	18.032	18.517	0.485	PLACERVILLE, BEDFORD AVENUE	PLACERVILLE, MOSQUITO ROAD OH	F	45.00	6.51	A	45.00	13.64	B	45.00	19.69	C	45.00	15.04	B
50	21	20.741	23.957	3.216	NEW TOWN ROAD	JUNCTION OLD HIGHWAY, CAMINO, WEST	D	60.00	4.47	A	60.00	9.53	A	60.00	9.13	A	60.00	7.00	A
50	22	23.957	25.949	1.992	JUNCTION OLD HIGHWAY, CAMINO, WEST	EAST CAMINO ROAD	E	60.00	2.52	A	60.00	9.13	A	60.00	8.17	A	60.00	6.02	A
50	26	34.219	39.772	5.553	OLD CARSON ROAD	ICEHOUSE ROAD	D	50.00	3.60	A	50.00	7.54	A	50.00	6.26	A	50.00	4.40	A

<sup>1</sup> Density expressed in pc/mi/ln, passenger cars per mile per lane  
<sup>2</sup> Level of service for multi-lane highways is based on density as described in Chapter 14, HCM 2010



**Table B-3. Existing LOS Results for Two-Lane State Highways (SR 49, US 50, SR 153, SR 193)**

Route	Seg	NB/EB Postmile	SB/WB Postmile	Segment Length	North/East of Segment	South/West of Segment	LOS Threshold	Eastbound						Westbound					
								AM Peak			PM Peak			AM Peak			PM Peak		
								PTSF <sup>1</sup> (%)	PFFS <sup>2</sup> (%)	LOS <sup>3</sup>	PTSF <sup>1</sup> (%)	PFFS <sup>2</sup> (%)	LOS <sup>3</sup>	PTSF <sup>1</sup> (%)	PFFS <sup>2</sup> (%)	LOS <sup>3</sup>	PTSF <sup>1</sup> (%)	PFFS <sup>2</sup> (%)	LOS <sup>3</sup>
49	1	0	1.65	1.65	AMADOR/EL DORADO COUNTY LINE	NASHVILLE, SOUTH	D	59.4%	89.8%	C	23.0%	87.0%	A	18.7%	87.6%	A	59.2%	89.4%	C
49	2	1.65	8.352	6.702	NASHVILLE, SOUTH	CHINA HILL ROAD	D	66.8%	87.3%	C	32.7%	86.7%	A	25.5%	87.4%	A	67.4%	85.2%	C
49	3	8.352	9.494	1.142	CHINA HILL ROAD	EL DORADO, UNION MINE ROAD	D	75.4%	83.5%	D	36.6%	84.5%	A	29.0%	85.6%	A	74.7%	80.7%	D
49	4	9.494	9.641	0.147	EL DORADO, UNION MINE ROAD	EL DORADO, PLEASANT VALLEY ROAD	E	79.1%	70.7%	D	43.6%	75.2%	C	35.2%	76.1%	C	82.5%	67.6%	D
49	5	9.641	11.239	1.598	EL DORADO, PLEASANT VALLEY ROAD	MISSOURI FLAT ROAD	F	94.1%	66.6%	E	54.8%	69.4%	D	45.8%	73.4%	D	92.8%	65.6%	E
49	6	11.239	11.859	0.62	MISSOURI FLAT ROAD	DIAMOND SPRINGS, PLEASANT VALLEY ROAD	F	98.1%	64.9%	E	58.5%	66.9%	D	49.8%	70.9%	D	94.4%	63.2%	E
49	7	11.859	14.463	2.604	DIAMOND SPRINGS, PLEASANT VALLEY ROAD	PLACERVILLE, FISKE ROAD	E	72.1%	79.5%	D	41.3%	82.3%	B	33.9%	83.0%	A	71.8%	78.4%	D
49	8	14.463	14.597	0.134	PLACERVILLE, FISKE ROAD	PLACERVILLE, PACIFIC/ MAIN STREETS	E	95.0%	65.4%	E	56.0%	68.1%	D	47.1%	68.7%	D	94.1%	59.9%	E
49	9	14.597	14.891	0.294	PLACERVILLE, PACIFIC/ MAIN STREETS	PLACERVILLE, JCT. RTE. 50	F	70.8%	82.0%	C	31.3%	80.7%	C	23.9%	82.1%	C	72.0%	79.4%	C
49	10	14.891	15.685	0.794	PLACERVILLE, JCT. RTE. 50	JCT. RTE. 193 NORTH	F	28.6%	79.5%	C	74.6%	73.4%	D	75.1%	76.8%	C	35.2%	77.5%	C
49	11	15.685	16.44	0.755	JCT. RTE. 193 NORTH	DIANA STREET	D	21.9%	81.7%	C	69.1%	81.1%	C	67.8%	84.4%	B	28.6%	81.8%	C
49	12	16.44	19.42	2.98	DIANA STREET	GOLD HILL ROAD	D	23.2%	82.4%	A	65.4%	81.4%	C	65.1%	84.6%	C	29.9%	82.1%	A
49	13	19.42	22.865	3.445	GOLD HILL ROAD	COLOMA, JCT. RTE. 153 WEST	D	15.8%	87.1%	A	54.9%	89.1%	B	55.3%	89.8%	C	19.6%	86.1%	A
49	14	22.865	24.48	1.615	COLOMA, JCT. RTE. 153 WEST	MARSHALL GRADE ROAD (TO GEORGETOWN)	D	23.9%	83.0%	A	72.0%	80.6%	D	70.7%	84.0%	D	31.2%	82.6%	A
49	15	24.48	28.19	3.71	MARSHALL GRADE ROAD (TO GEORGETOWN)	HASTINGS CREEK BRIDGE	D	18.8%	85.5%	A	62.5%	87.6%	C	61.9%	88.3%	C	24.0%	84.9%	A
49	16	28.19	34.466	6.276	HASTINGS CREEK BRIDGE	COOL, JCT. RTE. 193 EAST	D	18.8%	88.3%	A	62.7%	89.6%	C	62.2%	90.2%	C	24.1%	87.8%	A
49	17	34.466	38.233	3.767	COOL, JCT. RTE. 193 EAST	EL DORADO/PLACER COUNTY LINE	F	39.7%	82.5%	A	80.3%	77.9%	D	75.8%	78.7%	D	48.2%	81.1%	B
50	25	31.299	34.219	2.92	SLY PARK ROAD	OLD CARSON ROAD	E	52.3%	84.0%	B	73.8%	81.4%	D	54.3%	85.6%	B	47.7%	84.7%	B
50	27	39.772	46.592	6.82	ICEHOUSE ROAD	W O ALDER RIDGE ROAD	F	59.9%	81.1%	C	81.9%	77.2%	D	76.9%	79.3%	D	64.0%	79.0%	C
50	28	46.592	48.952	2.36	W O ALDER RIDGE ROAD	SILVER FORK ROAD	F	59.3%	81.2%	C	80.1%	77.7%	C	76.2%	79.5%	C	63.0%	79.5%	C
50	29	48.952	53.732	4.78	SILVER FORK ROAD	WRIGHTS LAKE ROAD	F	59.8%	81.1%	C	80.7%	77.6%	D	77.3%	79.1%	D	63.7%	79.2%	C
50	30	53.732	57.892	4.16	WRIGHTS LAKE ROAD	STRAWBERRY LN	F	59.5%	81.3%	C	80.3%	77.8%	D	76.4%	79.5%	D	63.2%	79.6%	C
50	31	57.892	60.192	2.3	STRAWBERRY LN	SLIPPERY FORD ROAD	F	59.4%	81.2%	C	80.2%	77.8%	D	76.3%	79.5%	D	63.1%	79.6%	C
50	32	60.192	63.522	3.33	SLIPPERY FORD ROAD	SIERRA-AT-TAHOE ROAD	F	59.7%	81.0%	C	80.6%	77.5%	D	77.3%	79.0%	D	63.7%	79.1%	C
50	33	63.522	65.619	1.83	SIERRA-AT-TAHOE ROAD	ECHO LAKE ROAD	F	59.2%	81.6%	C	79.9%	78.2%	D	75.9%	79.9%	D	62.9%	79.9%	C
153	1	0	0.12	0.12	JCT. RTE. 49	COLD SPRINGS ROAD	D	20.2%	90.0%	A	50.9%	90.8%	B	52.3%	91.6%	B	31.7%	88.8%	A
153	2	0.12	0.55	0.43	COLD SPRINGS ROAD	MARSHALL'S MONUMENT	D	24.1%	94.8%	A	31.8%	94.8%	A	30.2%	94.7%	A	22.8%	94.7%	A
193	1	0	0.856	0.856	COOL, JCT. RTE. 49	AMERICAN RIVER ROAD	D	29.5%	86.5%	A	67.9%	84.4%	C	68.7%	86.0%	C	38.7%	85.5%	A
193	2	0.856	2.169	1.313	AMERICAN RIVER ROAD	AUBURN LAKE TRAIL ROAD	D	33.6%	85.4%	A	70.6%	82.0%	D	73.1%	83.8%	D	42.4%	84.8%	B
193	3	2.169	12.19	10.021	AUBURN LAKE TRAIL ROAD	EVERGREEN COURT ROAD	D	36.1%	85.6%	A	69.5%	82.7%	C	69.1%	83.1%	C	45.1%	84.8%	B
193	4	12.19	12.699	0.509	EVERGREEN COURT ROAD	GEORGETOWN, LOWER MAIN STREET	D	28.1%	81.9%	C	65.9%	80.2%	C	66.7%	82.1%	C	37.1%	80.2%	C
193	5	12.699	16.105	3.406	GEORGETOWN, LOWER MAIN STREET	BLACK OAK MINE ROAD	D	60.6%	90.8%	C	22.6%	88.1%	A	17.7%	88.3%	A	59.9%	90.3%	C
193	6	16.105	19.4	3.295	BLACK OAK MINE ROAD	GARDEN VALLEY ROAD	D	53.8%	92.2%	B	18.4%	90.4%	A	11.4%	88.5%	A	52.6%	92.0%	B
193	7	19.4	26.95	7.55	GARDEN VALLEY ROAD	JCT. RTE. 49	D	61.8%	89.5%	C	25.9%	87.3%	A	20.6%	87.6%	A	61.3%	88.5%	C

<sup>1</sup> Percent of Time Spent Following - average percent of time that one must follow slower vehicles  
<sup>2</sup> Percent of Free-Flow Speed - ability of ones to travel at or near the posted speed limit

**Table B-4. Existing LOS Results for Local Roadways**

ID	Name	Location	Area	Type	LOS Threshold	2014			
						AM Volume	LOS	PM Volume	LOS
1	Bass Lake Rd	North of Country Club Dr	Rural	2AU	D	1028	D	966	D
2	Bass Lake Rd	South of Green Valley Rd	Community Region	2AU	E	539	A-C	448	A-C
3	Bass Lake Rd	North of Serrano Pkwy	Community Region	2AU	E	824	A-C	816	A-C
4	Bassi Rd	West of Lotus Rd	Rural	2AU	D	83	A-C	107	A-C
5	Bedford Ave	At City Limit	Rural	2AU	D	35	A-C	46	A-C
6	Broadway	At City Limit	Community Region	2AU	E	256	A-C	309	A-C
7	Bucks Bar Rd	South Pleasant Valley Rd	Rural	2AU	D	411	A-C	412	A-C
8	Bucks Bar Rd	North of Mt Aukum Rd	Rural	2AU	D	294	A-C	307	A-C
9	Cambridge Rd	North of Country Club Dr	Exception F	2AU	F	571	A-C	632	A-C
10	Cambridge Rd	South of Country Club Dr	Community Region	2AU	E	584	A-C	709	A-C
11	Cambridge Rd	At US 50 Overcrossing	Community Region	2AU	E	641	A-C	810	A-C
12	Cambridge Rd	South of Green Valley Rd	Community Region	2AU	E	379	A-C	394	A-C
13	Cambridge Rd	North of Oxford Rd	Community Region	2AU	E	339	A-C	366	A-C
14	Cameron Park Dr	North of Coach Ln	Community Region	4AD	E	1155	A-C	2022	D
15	Cameron Park Dr	South of Hacienda Dr	Community Region	2AU	E	1236	D	1619	E
16	Cameron Park Dr	South of Green Valley Rd	Community Region	2AU	E	685	A-C	781	A-C
17	Cameron Park Dr	North of Mira Loma Dr	Community Region	2AU	E	929	D	1180	D
18	Cameron Park Dr	South of Robin Ln	Community Region	2AU	E	533	A-C	901	D
19	Cameron Park Dr	North of Robin Ln	Exception F	2AU	F	456	A-C	773	A-C
20	Carson Rd	East of Barkley Rd	Community Region	2AU	E	189	A-C	269	A-C
21	Carson Rd	At Carson Ct	Rural	2AU	D	82	A-C	149	A-C
22	Carson Rd	West of Gatlin Rd	Rural	2AU	D	57	A-C	137	A-C
23	Carson Rd	East of Ponderosa Way	Community Region	2AU	E	139	A-C	208	A-C
24	China Garden Rd	East of Missouri Flat Rd	Community Region	2AU	E	220	A-C	320	A-C
25	China Garden Rd	North of SR 49	Community Region	2AU	E	82	A-C	71	A-C
26	Cold Springs Rd	South of Gold Hill Rd	Rural	2AU	D	188	A-C	289	A-C
27	Cold Springs Rd	South of SR 153	Rural	2AU	D	120	A-C	187	A-C
28	Country Club Dr	East of Bass Lake Rd	Rural	2AU	D	456	A-C	320	A-C
29	Country Club Dr	West of Knollwood Dr	Community Region	2AU	E	515	A-C	277	A-C
30	Country Club Dr	East of Cambridge Rd	Community Region	2AU	E	222	A-C	266	A-C
31	Country Club Dr	East of Merrychase Dr	Community Region	2AU	E	381	A-C	197	A-C
32	Country Club Dr	West of Cameron Park Dr	Community Region	2AU	E	254	A-C	375	A-C
33	Durock Rd	West of S. Shingle Rd	Community Region	2AU	E	365	A-C	568	A-C
34	El Dorado Hills Blvd	South of Wilson Blvd	Community Region	4AD	E	1951	D	1895	D
35	El Dorado Hills Blvd	North of Wilson Blvd	Community Region	4AD	E	2018	D	1858	D
36	El Dorado Hills Blvd	North of Saratoga Way	Community Region	4AD	E	2353	D	2458	D
37	El Dorado Hills Blvd	South of Francisco Dr	Community Region	2AU	E	1324	D	1299	D
38	El Dorado Hills Blvd	South of Green Valley Rd	Community Region	2AU	E	448	A-C	367	A-C
39	El Dorado Hills Blvd	North of Harvard Way	Community Region	4AD	E	1627	A-C	1497	A-C
40	El Dorado Rd	South of US 50	Community Region	2AU	E	381	A-C	388	A-C
41	El Dorado Rd	North of Pleasant Valley Rd	Community Region	2AU	E	197	A-C	185	A-C
42	El Dorado Rd	South of Missouri Flat Rd	Community Region	2AU	E	160	A-C	185	A-C
43	Enterprise Dr	East of Forni Rd	Community Region	2AU	E	227	A-C	309	A-C
44	Fairplay Rd	South of Mt Aukum Rd	Rural	2AU	D	144	A-C	162	A-C
45	Forni Rd	North of SR 49	Community Region	2AU	E	322	A-C	280	A-C
46	Forni Rd	West of Arroyo Vista Way	Community Region	2AU	E	85	A-C	141	A-C
47	Francisco Dr	South of Green Valley Rd	Community Region	2AU	E	1050	D	1162	D
48	French Creek Rd	North of Old French Town Rd	Rural	2AU	D	178	A-C	214	A-C
49	Gold Hill Rd	East of Lotus Road	Rural	2AU	D	231	A-C	142	A-C
50	Gold Hill Rd	East of Cold Springs Rd	Rural	2AU	D	64	A-C	45	A-C
51	Gold Hill Rd	West of Cold Springs Rd	Rural	2AU	D	243	A-C	144	A-C
52	Green Valley Rd	West of Sophia Pkwy	Community Region	2AU	E	1881	F	2066	F
53	Green Valley Rd	West of Weber Creek	Rural	2AU	D	277	A-C	376	A-C
54	Green Valley Rd	West of Silva Valley Rd	Community Region	2AU	E	951	D	1119	D
55	Green Valley Rd	East of Mormon Island Dr	Community Region	4AD	E	1998	D	2480	D
56	Green Valley Rd	West of Mormon Island Dr	Community Region	4AD	E	2005	D	2481	D
57	Green Valley Rd	East of Sophia Pkwy	Community Region	4AD	E	2020	D	2475	D
58	Green Valley Rd	East of Francisco Dr	Community Region	4AD	E	1208	E	1071	E
59	Green Valley Rd	West of Bass Lake Rd	Community Region	2AU	E	1289	E	945	E
60	Green Valley Rd	East of Bass Lake Rd	Community Region	2AU	E	1138	D	996	D
61	Green Valley Rd	East of La Crescenta Dr	Community Region	2AU	E	673	D	596	D
62	Green Valley Rd	East of Deer Valley Rd	Rural	2AU	D	407	C	403	C
63	Green Valley Rd	West of Lotus Rd	Rural	2AU	D	607	D	709	D
64	Green Valley Rd	West of Greenstone Rd	Rural	2AU	D	368	A-C	379	A-C
65	Green Valley Rd	West of Missouri Flat Rd	Community Region	2AU	E	868	D	740	A-C
66	Green Valley Rd	West of Campus Dr	Rural	2AU	D	392	A-C	424	A-C
67	Greenstone Rd	North of US 50	Rural	2AU	D	257	A-C	246	A-C
68	Greenstone Rd	North of Mother Lode Dr	Community Region	2AU	E	93	A-C	112	A-C

ID	Name	Location	Area	Type	LOS Threshold	2014			
						AM Volume	LOS	PM Volume	LOS
69	Grizzly Flat Rd	East of Mt Aukum Rd	Rural	2AU	D	151	A-C	199	A-C
70	Harvard Way	East of El Dorado Hills Blvd	Community Region	4AU	E	970	A-C	483	A-C
71	Harvard Way	West of Silva Valley Pkwy	Community Region	4AU	E	871	A-C	561	A-C
72	Ice House Rd	North of US 50	Rural	2AU	D	37	A-C	71	A-C
73	Latrobe Rd	North of County Line	Rural	2AU	D	241	A-C	329	A-C
74	Latrobe Rd	South of Investment Blvd	Community Region	2AU	E	373	A-C	449	A-C
75	Latrobe Rd	North of Golden Foothill Pkwy South	Community Region	4AD	E	1601	A-C	1819	A-C
76	Latrobe Rd	North of Investment Blvd	Community Region	2AU	E	802	A-C	971	D
77	Latrobe Rd	North of Golden Foothill Pkwy	Community Region	4AD	E	2123	D	2287	D
78	Latrobe Rd	North of White Rock Rd	Community Region	6AD	E	2557	A-C	2695	A-C
79	Lotus Rd	South of Thompson Hill Rd	Rural	2AU	D	346	A-C	441	A-C
80	Lotus Rd	North Green Valley Rd	Rural	2AU	D	565	A-C	703	A-C
81	Lotus Rd	South of SR 49	Rural	2AU	D	260	A-C	354	A-C
82	Luneman Rd	West of Lotus Rd	Rural	2AU	D	333	A-C	196	A-C
83	Marshall Rd	East of SR 49	Rural	2AU	D	315	A-C	315	A-C
84	Marshall Rd	East of Garden Valley Rd	Rural	2AU	D	432	A-C	408	A-C
85	Marshall Rd	South of Lower Main St	Rural	2AU	D	37	A-C	50	A-C
86	Meder Rd	East of Cameron Park Dr	Community Region	2AU	E	528	A-C	568	A-C
87	Meder Rd	West of Ponderosa Rd	Community Region	2AU	E	420	A-C	436	A-C
88	Missouri Flat Rd	West of El Dorado Rd	Community Region	2AU	E	844	A-C	714	A-C
89	Missouri Flat Rd	East of El Dorado Rd	Community Region	2AU	E	801	A-C	835	A-C
90	Missouri Flat Rd	South of China Garden Rd	Community Region	2AU	E	1174	D	1640	E
91	Missouri Flat Rd	North of SR 49	Community Region	2AU	E	1047	D	1307	D
92	Missouri Flat Rd	North of Forni Rd	Exception F	4AD	F	1876	D	2686	D
93	Missouri Flat Rd	South of Forni Rd	Exception F	4AD	F	1600	A-C	1986	D
94	Mormon Emigrant Trl	East of Sly Park Rd	Rural	2AU	D	38	A-C	63	A-C
95	Mosquito Rd	At City Limit	Community Region	2AU	E	335	A-C	346	A-C
96	Mosquito Rd	South of American River Bridge	Rural	2AU	D	90	A-C	110	A-C
97	Mother Lode Dr	East of French Creek Rd	Community Region	2AU	E	904	D	809	A-C
98	Mother Lode Dr	West of Sunset Ln	Community Region	2AU	E	950	D	1068	D
99	Mother Lode Dr	West of Pleasant Valley Rd	Community Region	2AU	E	642	A-C	757	A-C
100	Mother Lode Dr	East of Pleasant Vally Rd	Community Region	2AU	E	229	A-C	347	A-C
101	Mt Aukum Rd	North of County Line	Rural	2AU	D	114	A-C	137	A-C
102	Mt Aukum Rd	South of Bucks Bar Rd	Rural	2AU	D	252	A-C	297	A-C
103	Mt Aukum Rd	South of Pleasant Valley Rd	Rural	2AU	D	190	A-C	318	A-C
104	Mt Murphy Rd	North of SR 49	Rural	2AU	D	26	A-C	25	A-C
105	Mt Murphy Rd	South of Marshall Rd	Rural	2AU	D	54	A-C	97	A-C
106	N Shingle Rd	South of Green Valley Rd	Rural	2AU	D	414	A-C	440	A-C
107	Newtown Rd	North of Pioneer Hill Rd	Rural	2AU	D	231	A-C	240	A-C
108	Newtown Rd	East of Broadway Rd	Community Region	2AU	E	299	A-C	323	A-C
109	Newtown Rd	North of Pleasant Valley Rd	Rural	2AU	D	215	A-C	223	A-C
110	Old French Town Rd	South of Mother Lode Dr	Community Region	2AU	E	83	A-C	104	A-C
111	Omo Ranch Rd	East of Mt Aukum Rd	Rural	2AU	D	63	A-C	56	A-C
112	Oxford Rd	East of Salida Way	Community Region	2AU	E	262	A-C	335	A-C
113	Palmer Dr	East of Cameron Park Dr	Community Region	2AU	E	449	A-C	873	D
114	Patterson Dr	South of Pleasant Valley Rd	Community Region	2AU	E	293	A-C	407	A-C
115	Pleasant Valley Rd	East of Mother Lode Dr	Community Region	2AU	E	561	A-C	603	A-C
116	Pleasant Valley Rd	East of Bucks Bar Rd	Community Region	2AU	E	473	A-C	443	A-C
117	Pleasant Valley Rd	West of Oak Hill Rd	Community Region	2AU	E	901	D	970	D
118	Pleasant Valley Rd	East of SR 49	Community Region	2AU	E	1075	D	1203	D
119	Pleasant Valley Rd	East of Cedar Ravine Rd	Community Region	2AU	E	861	D	860	D
120	Pleasant Valley Rd	East of Newtown Rd	Community Region	2AU	E	429	A-C	442	A-C
121	Ponderosa Rd	North of Jackpine Rd	Rural	2AU	D	147	A-C	128	A-C
122	Pony Express Trl	East of Carson Rd	Community Region	2AU	E	203	A-C	262	A-C
123	Pony Express Trl	East of Gilmore Rd	Community Region	2AU	E	237	A-C	414	A-C
124	Pony Express Trl	West of Forebay Rd	Community Region	2AU	E	251	A-C	492	A-C
125	Rock Creek Rd	East of SR 193	Rural	2AU	D	19	A-C	18	A-C
126	Salmon Falls Rd	At New York Creek Bridge	Rural	2AU	D	191	A-C	244	A-C
127	Salmon Falls Rd	South of Malcolm Dixon Rd	Community Region	2AU	E	612	A-C	590	A-C
128	Salmon Falls Rd	South of Pedro Hill Rd	Rural	2AU	D	92	A-C	100	A-C
129	Salmon Falls Rd	South of Rattlesnake Bar Rd	Rural	2AU	D	31	A-C	38	A-C
130	Serrano Pkwy	East of Silva Valley Pkwy	Community Region	4AD	E	1424	A-C	947	A-C
131	Serrano Pkwy	West of Bass Lake Rd	Community Region	2AU	E	491	A-C	466	A-C
132	Shingle Springs Dr	South of US 50	Rural	2AU	D	475	A-C	221	A-C
133	Silva Valley Pky	North of US 50	Community Region	2AU	E	776	A-C	1052	D
134	Silva Valley Pky	South of Green Valley Rd	Community Region	2AU	E	603	A-C	554	A-C
135	Silva Valley Pky	North of Havard Way	Community Region	2AU	E	886	D	848	A-C
136	Silva Valley Pky	South of Serrano Pkwy	Community Region	4AD	E	1185	A-C	975	A-C
137	Sly Park Rd	East of Mt Aukum Rd	Rural	2AU	D	242	A-C	272	A-C
138	Sly Park Rd	East of Mormon Emigrant Trail	Rural	2AU	D	234	A-C	324	A-C

ID	Name	Location	Area	Type	LOS Threshold	2014			
						AM Volume	LOS	PM Volume	LOS
139	Sly Park Rd	South of Pony Express Trail	Community Region	2AU	E	581	A-C	734	A-C
140	Snows Rd	North of Newtown Rd	Rural	2AU	D	80	A-C	83	A-C
141	Snows Rd	South of Carson Rd	Community Region	2AU	E	337	A-C	212	A-C
142	South Shingle Rd	East of Latrobe Rd	Rural	2AU	D	98	A-C	75	A-C
143	South Shingle Rd	North of Barnett Ranch	Rural	2AU	D	192	A-C	217	A-C
144	South Shingle Rd	South of Sunset Ln	Community Region	2AU	E	434	A-C	555	A-C
145	Starbuck Rd	North of Green Valley Rd	Community Region	2AU	E	113	A-C	149	A-C
146	Union Ridge Rd	West of Hassler Rd	Rural	2AU	D	32	A-C	42	A-C
147	Wentworth Springs Rd	West of Quintette Rd	Rural	2AU	D	29	A-C	50	A-C
148	White Rock Rd	West of Windfield Way	Community Region	2AU	E	824	A-C	816	A-C
149	White Rock Rd	At County Line	Community Region	2AU	E	834	A-C	1026	D
150	White Rock Rd	East of Latrobe Rd	Community Region	2AU	E	1036	D	1444	D
151	White Rock Rd	West of Latrobe Rd	Community Region	4AD	E	999	A-C	1121	A-C
A-C defined as operating between LOS A-C per HCM 2010									
Indicates deficiency									

Draft

ATTACHMENT C

2035 FORECAST

GENERAL PLAN OPERATIONS RESULTS

(all segments presented in alphabetical order)

Draft

**Table C-1. General Plan LOS Results for US 50**

Route	Seg	EB Postmile	WB Postmile	Segment Length	East of Segment	West of Segment	LOS Threshold	Eastbound						Westbound					
								AM Peak			PM Peak			AM Peak			PM Peak		
								Avg. Speed (mph)	Density <sup>1</sup> (pcpmpl)	LOS <sup>2</sup>	Avg. Speed (mph)	Density <sup>1</sup> (pcpmpl)	LOS <sup>2</sup>	Avg. Speed (mph)	Density <sup>1</sup> (pcpmpl)	LOS <sup>2</sup>	Avg. Speed (mph)	Density <sup>1</sup> (pcpmpl)	LOS <sup>2</sup>
50	1	0	0.857	0.857	SACRAMENTO/EL DORADO COUNTY LINE	LATROBE ROAD	E	65.00	21.45	C	Unstable	>45	F	58.11	36.09	E	65.00	19.35	C
50	2	0.857	3.232	2.375	LATROBE ROAD	BASS LAKE ROAD	D	65.00	13.26	B	63.88	26.31	D	Unstable	>45	F	63.16	27.86	D
50	3	3.232	4.962	1.73	BASS LAKE ROAD	CAMBRIDGE ROAD	D	65.00	18.05	C	Unstable	>45	F	63.30	27.58	D	64.86	23.13	C
50	4	4.962	6.57	1.608	CAMBRIDGE ROAD	CAMERON PARK DRIVE	E	65.00	20.72	C	59.44	34.08	D	64.99	21.88	C	64.96	22.32	C
50	5	6.57	8.564	1.994	CAMERON PARK DRIVE	PONDEROSA ROAD	E	65.00	19.95	C	58.21	35.94	E	63.24	27.71	D	64.28	25.29	C
50	6	8.564	10.295	1.731	PONDEROSA ROAD	SHINGLE SPRINGS	D	65.00	15.87	B	64.17	25.60	C	64.92	22.73	C	64.92	22.73	C
50	7	10.295	12.19	1.895	SHINGLE SPRINGS	GREENSTONE ROAD	D	65.00	15.78	B	63.91	26.24	D	64.95	22.45	C	65.00	19.95	C
50	8	12.19	14.011	1.821	GREENSTONE ROAD	EL DORADO ROAD	D	65.00	13.21	B	65.00	20.75	C	65.00	18.62	C	65.00	19.15	C
50	9	14.011	15.055	1.044	EL DORADO ROAD	MISSOURI FLAT ROAD	E	65.00	12.86	B	65.00	19.95	C	65.00	18.35	C	65.00	18.44	C
50	10	15.055	15.829	0.774	MISSOURI FLAT ROAD	PLACERVILLE, FAIRGROUNDS	E	65.00	9.45	A	65.00	14.66	B	65.00	14.00	B	65.00	13.72	B
50	11	15.829	16.99	1.161	PLACERVILLE, FAIRGROUNDS	WEST PLACERVILLE	E	65.00	10.37	A	65.00	16.49	B	65.00	13.74	B	65.00	15.07	B
50	12	16.99	17.42	0.43	WEST PLACERVILLE	EB OFF TO MAIN STREET	E	65.00	12.50	B	65.00	20.13	C	65.00	17.02	B	65.00	18.35	C
50	18	18.517	18.99	0.473	PLACERVILLE, MOSQUITO ROAD	PLACERVILLE, SCHNELL SCHOOL ROAD	E	55.00	8.74	A	55.00	17.80	B	55.00	16.11	B	55.00	13.27	B
50	19	18.99	20.296	1.306	PLACERVILLE, SCHNELL SCHOOL ROAD	PLACERVILLE, POINT VIEW DRIVE	E	55.00	7.06	A	55.00	13.80	B	55.00	13.27	B	55.00	10.74	A
50	20	20.296	20.741	0.445	PLACERVILLE, POINT VIEW DRIVE	NEW TOWN ROAD	D	65.00	4.99	A	65.00	9.80	A	65.00	9.36	A	65.00	7.40	A
50	23	25.949	28.842	2.893	EAST CAMINO ROAD	SAWMILL (POLLOCK PINES)	E	65.00	3.23	A	65.00	10.06	A	65.00	8.89	A	65.00	6.91	A
50	24	28.842	31.299	2.457	SAWMILL (POLLOCK PINES)	SLY PARK ROAD	E	65.00	4.30	A	65.00	8.23	A	65.00	6.98	A	65.00	5.10	A

<sup>1</sup> Density expressed in pc/mi/ln, passenger cars per mile per lane  
<sup>2</sup> Level of service is based on density as described in Basic Freeway Segment, Chapter 11, HCM 2010  
Indicates deficiency

**Table C-2. General Plan LOS Results for Multilane State Highways**

Route	Seg	EB Postmile	WB Postmile	Segment Length	East of Segment	West of Segment	LOS Threshold	Eastbound						Westbound					
								AM Peak			PM Peak			AM Peak			PM Peak		
								Avg. Speed (mph)	Density <sup>1</sup> (pcpmpl)	LOS <sup>2</sup>	Avg. Speed (mph)	Density <sup>1</sup> (pcpmpl)	LOS <sup>2</sup>	Avg. Speed (mph)	Density <sup>1</sup> (pcpmpl)	LOS <sup>2</sup>	Avg. Speed (mph)	Density <sup>1</sup> (pcpmpl)	LOS <sup>2</sup>
50	13	17.42	17.52	0.1	EB OFF TO MAIN STREET	PLACERVILLE, CANAL STREET	E	45.00	20.09	C	44.51	33.79	D	45.00	28.80	D	45.00	30.22	D
50	14	17.52	17.667	0.147	PLACERVILLE, CANAL STREET	PLACERVILLE, JCT. RTE. 49	F	45.00	11.60	B	45.00	22.71	C	45.00	28.16	D	45.00	22.91	C
50	15	17.667	17.788	0.121	PLACERVILLE, JCT. RTE. 49	PLACERVILLE, COLOMA STREET	F	45.00	9.84	A	45.00	19.18	C	45.00	26.07	D	45.00	21.58	C
50	16	17.788	18.032	0.244	PLACERVILLE, COLOMA STREET	PLACERVILLE, BEDFORD AVENUE	F	45.00	9.93	A	45.00	19.51	C	45.00	26.44	D	45.00	21.82	C
50	17	18.032	18.517	0.485	PLACERVILLE, BEDFORD AVENUE	PLACERVILLE, MOSQUITO ROAD OH	F	45.00	8.49	A	45.00	16.47	B	45.00	22.13	C	45.00	18.64	C
50	21	20.741	23.957	3.216	NEW TOWN ROAD	JUNCTION OLD HIGHWAY, CAMINO, WEST	D	60.00	5.53	A	60.00	10.88	A	60.00	10.30	A	60.00	8.27	A
50	22	23.957	25.949	1.992	JUNCTION OLD HIGHWAY, CAMINO, WEST	EAST CAMINO ROAD	E	60.00	3.40	A	60.00	10.50	A	60.00	9.33	A	60.00	7.18	A
50	26	34.219	39.772	5.553	ICEHOUSE ROAD	OLD CARSON ROAD	D	50.00	4.52	A	50.00	8.94	A	50.00	7.54	A	50.00	5.46	A

<sup>1</sup> Density expressed in pc/mi/ln, passenger cars per mile per lane  
<sup>2</sup> Level of service for multi-lane highways is based on density as described in Chapter 14, HCM 2010

**Table C-3. General Plan LOS Results for Two-Lane State Highways**

Route	Seg	NB/EB Postmile	SB/WB Postmile	Segment Length	North/East of Segment	South/West of Segment	LOS Threshold	Eastbound						Westbound					
								AM Peak			PM Peak			AM Peak			PM Peak		
								PTSF <sup>1</sup> (%)	PFFS <sup>2</sup> (%)	LOS <sup>3</sup>	PTSF <sup>1</sup> (%)	PFFS <sup>2</sup> (%)	LOS <sup>3</sup>	PTSF <sup>1</sup> (%)	PFFS <sup>2</sup> (%)	LOS <sup>3</sup>	PTSF <sup>1</sup> (%)	PFFS <sup>2</sup> (%)	LOS <sup>3</sup>
49	1	0	1.65	1.65	AMADOR/EL DORADO COUNTY LINE	NASHVILLE, SOUTH	D	64.9%	88.2%	C	30.0%	85.9%	A	20.1%	87.1%	A	64.0%	85.8%	C
49	2	1.65	8.352	6.702	NASHVILLE, SOUTH	CHINA HILL ROAD	D	71.7%	84.3%	D	36.9%	85.5%	A	30.1%	86.4%	A	71.0%	82.8%	D
49	3	8.352	9.494	1.142	CHINA HILL ROAD	EL DORADO, UNION MINE ROAD	D	77.4%	80.4%	D	41.8%	82.4%	B	31.2%	84.1%	A	82.2%	78.3%	D
49	4	9.494	9.641	0.147	EL DORADO, UNION MINE ROAD	EL DORADO, PLEASANT VALLEY ROAD	E	90.0%	66.4%	E	50.8%	70.3%	D	40.0%	72.3%	D	91.7%	63.0%	E
49	5	9.641	11.239	1.598	EL DORADO, PLEASANT VALLEY ROAD	MISSOURI FLAT ROAD	F	96.7%	62.5%	E	63.2%	63.3%	E	55.0%	68.3%	D	94.7%	60.6%	E
49	6	11.239	11.859	0.62	MISSOURI FLAT ROAD	DIAMOND SPRINGS, PLEASANT VALLEY ROAD	F	100.0%	61.9%	E	62.4%	64.7%	E	49.9%	68.3%	D	93.8%	61.6%	E
49	7	11.859	14.463	2.604	DIAMOND SPRINGS, PLEASANT VALLEY ROAD	PLACERVILLE, FISKE ROAD	E	75.9%	77.4%	D	50.0%	79.5%	B	40.8%	80.9%	B	77.0%	75.7%	D
49	8	14.463	14.597	0.134	PLACERVILLE, FISKE ROAD	PLACERVILLE, PACIFIC/ MAIN STREETS	E	94.6%	63.1%	E	63.9%	63.8%	E	55.9%	64.6%	E	92.6%	56.5%	E
49	9	14.597	14.891	0.294	PLACERVILLE, PACIFIC/ MAIN STREETS	PLACERVILLE, JCT. RTE. 50	F	73.1%	75.0%	C	40.2%	78.7%	C	37.7%	79.7%	C	72.5%	74.7%	D
49	10	14.891	15.685	0.794	PLACERVILLE, JCT. RTE. 50	JCT. RTE. 193 NORTH	F	74.5%	72.8%	D	35.7%	76.5%	C	35.6%	77.3%	C	77.0%	69.0%	D
49	11	15.685	16.44	0.755	JCT. RTE. 193 NORTH	DIANA STREET	D	72.6%	80.1%	C	35.3%	79.7%	C	26.3%	81.5%	C	71.8%	78.4%	C
49	12	16.44	19.42	2.98	DIANA STREET	GOLD HILL ROAD	D	65.7%	81.9%	C	36.1%	80.8%	A	28.1%	87.0%	A	66.5%	79.1%	C
49	13	19.42	22.865	3.445	GOLD HILL ROAD	COLOMA, JCT. RTE. 153 WEST	D	55.8%	88.8%	C	24.5%	84.0%	A	20.3%	85.3%	A	56.6%	88.0%	C
49	14	22.865	24.48	1.615	COLOMA, JCT. RTE. 153 WEST	MARSHALL GRADE ROAD (TO GEORGETOWN)	D	72.6%	81.1%	D	37.7%	80.8%	A	28.4%	82.8%	A	73.1%	77.7%	D
49	15	24.48	28.19	3.71	MARSHALL GRADE ROAD (TO GEORGETOWN)	HASTINGS CREEK BRIDGE	D	66.3%	85.0%	C	35.8%	83.3%	A	28.1%	84.2%	A	68.4%	81.6%	C
49	16	28.19	34.466	6.276	HASTINGS CREEK BRIDGE	COOL, JCT. RTE. 193 EAST	D	63.4%	88.7%	C	35.2%	86.8%	A	27.0%	87.5%	A	66.7%	86.1%	C
49	17	34.466	38.233	3.767	COOL, JCT. RTE. 193 EAST	EL DORADO/PLACER COUNTY LINE	F	83.0%	76.9%	D	55.7%	78.7%	C	48.3%	80.5%	B	84.0%	75.8%	D
50	25	31.299	34.219	2.92	SLY PARK ROAD	OLD CARSON ROAD	E	59.1%	82.4%	C	77.7%	79.5%	D	61.7%	83.5%	C	55.1%	82.5%	C
50	27	39.772	46.592	6.82	ICEHOUSE ROAD	W O ALDER RIDGE ROAD	F	64.3%	79.4%	C	84.2%	75.6%	D	80.7%	77.7%	D	67.1%	77.3%	C
50	28	46.592	48.952	2.36	W O ALDER RIDGE ROAD	SILVER FORK ROAD	F	63.8%	79.4%	C	83.5%	75.9%	C	80.0%	77.8%	C	66.5%	77.5%	C
50	29	48.952	53.732	4.78	SILVER FORK ROAD	WRIGHTS LAKE ROAD	F	64.4%	79.2%	C	84.1%	75.8%	D	81.5%	77.3%	D	67.1%	77.3%	C
50	30	53.732	57.892	4.16	WRIGHTS LAKE ROAD	STRAWBERRY LN	F	64.2%	79.4%	C	83.8%	76.0%	D	80.7%	77.7%	D	66.6%	77.7%	C
50	31	57.892	60.192	2.3	STRAWBERRY LN	SLIPPERY FORD ROAD	F	64.1%	79.4%	C	83.6%	76.0%	D	80.5%	77.7%	D	66.5%	77.6%	C
50	32	60.192	63.522	3.33	SLIPPERY FORD ROAD	SIERRA-AT-TAHOE ROAD	F	64.3%	79.2%	C	84.0%	75.7%	D	81.5%	77.2%	D	67.1%	77.2%	C
50	33	63.522	65.619	1.83	SIERRA-AT-TAHOE ROAD	ECHO LAKE ROAD	F	63.9%	79.7%	C	83.4%	76.3%	D	80.2%	78.1%	D	66.3%	77.9%	C
153	1	0	0.12	0.12	JCT. RTE. 49	COLD SPRINGS ROAD	D	21.1%	87.3%	A	60.1%	87.4%	C	60.8%	89.9%	C	36.2%	86.3%	A
153	2	0.12	0.55	0.43	COLD SPRINGS ROAD	MARSHALL'S MONUMENT	D	27.7%	94.6%	A	27.7%	94.6%	A	27.7%	94.5%	A	27.7%	94.5%	A
193	1	0	0.856	0.856	COOL, JCT. RTE. 49	AMERICAN RIVER ROAD	D	34.6%	85.7%	A	72.0%	82.3%	D	72.5%	83.4%	D	43.6%	84.5%	B
193	2	0.856	2.169	1.313	AMERICAN RIVER ROAD	AUBURN LAKE TRAIL ROAD	D	36.9%	84.6%	A	73.1%	80.9%	D	73.7%	81.6%	D	46.1%	83.7%	B
193	3	2.169	12.19	10.021	AUBURN LAKE TRAIL ROAD	EVERGREEN COURT ROAD	D	38.6%	84.9%	A	70.3%	82.0%	D	70.6%	82.2%	D	47.5%	84.0%	B
193	4	12.19	12.699	0.509	EVERGREEN COURT ROAD	GEORGETOWN, LOWER MAIN STREET	D	30.1%	81.5%	C	67.7%	78.8%	C	68.0%	80.7%	C	38.8%	79.8%	C
193	5	12.699	16.105	3.406	GEORGETOWN, LOWER MAIN STREET	BLACK OAK MINE ROAD	D	60.3%	90.5%	C	25.4%	87.8%	A	20.9%	88.1%	A	60.0%	89.8%	C
193	6	16.105	19.4	3.295	BLACK OAK MINE ROAD	GARDEN VALLEY ROAD	D	54.2%	92.0%	B	18.7%	89.7%	A	16.0%	90.4%	A	53.8%	91.8%	B
193	7	19.4	26.95	7.55	GARDEN VALLEY ROAD	JCT. RTE. 49	D	62.8%	88.7%	C	30.3%	86.8%	A	23.5%	87.2%	A	62.9%	86.9%	C

<sup>1</sup> Percent of Time Spent Following - average percent of time that one must follow slower vehicles  
<sup>2</sup> Percent of Free-Flow Speed - ability of ones to travel at or near the posted speed limit  
<sup>3</sup> Level of service for two-lane highways is based on criteria in Chapter 15, HCM 2010

**Table C-4. General Plan LOS Results for Local Roadways**

ID	Name	Location	Area	Type	LOS Threshold	2035 General Plan			
						AM Volume	LOS	PM Volume	LOS
1	Bass Lake Rd	North of Country Club Dr	Rural	2AU	D	1480	D	1350	D
2	Bass Lake Rd	South of Green Valley Rd	Community Region	2AU	E	870	D	730	A-C
3	Bass Lake Rd	North of Serrano Pkwy	Community Region	2AU	E	1110	D	1120	D
4	Bassi Rd	West of Lotus Rd	Rural	2AU	D	100	A-C	130	A-C
5	Bedford Ave	At City Limit	Rural	2AU	D	40	A-C	50	A-C
6	Broadway	At City Limit	Community Region	2AU	E	350	A-C	430	A-C
7	Bucks Bar Rd	South Pleasant Valley Rd	Rural	2AU	D	480	A-C	500	A-C
8	Bucks Bar Rd	North of Mt Aukum Rd	Rural	2AU	D	350	A-C	380	A-C
9	Cambridge Rd	North of Country Club Dr	Exception F	2AU	F	820	A-C	1000	D
10	Cambridge Rd	South of Country Club Dr	Community Region	2AU	E	810	A-C	920	D
11	Cambridge Rd	At US 50 Overcrossing	Community Region	2AU	E	1070	D	1140	D
12	Cambridge Rd	South of Green Valley Rd	Community Region	2AU	E	690	A-C	700	A-C
13	Cambridge Rd	North of Oxford Rd	Community Region	2AU	E	470	A-C	540	A-C
14	Cameron Park Dr	North of Coach Ln	Community Region	4AD	E	1780	A-C	3060	D
15	Cameron Park Dr	South of Hacienda Dr	Community Region	2AU	E	1470	D	1850	F
16	Cameron Park Dr	South of Green Valley Rd	Community Region	2AU	E	880	D	970	D
17	Cameron Park Dr	North of Mira Loma Dr	Community Region	2AU	E	1200	D	1480	D
18	Cameron Park Dr	South of Robin Ln	Community Region	2AU	E	880	D	1390	D
19	Cameron Park Dr	North of Robin Ln	Exception F	2AU	F	890	D	1420	D
20	Carson Rd	East of Barkley Rd	Community Region	2AU	E	230	A-C	320	A-C
21	Carson Rd	At Carson Ct	Rural	2AU	D	100	A-C	200	A-C
22	Carson Rd	West of Gatlin Rd	Rural	2AU	D	100	A-C	200	A-C
23	Carson Rd	East of Ponderosa Way	Community Region	2AU	E	150	A-C	230	A-C
24	China Garden Rd	East of Missouri Flat Rd	Community Region	2AU	E	340	A-C	470	A-C
25	China Garden Rd	North of SR 49	Community Region	2AU	E	120	A-C	140	A-C
26	Cold Springs Rd	South of Gold Hill Rd	Rural	2AU	D	230	A-C	330	A-C
27	Cold Springs Rd	South of SR 153	Rural	2AU	D	150	A-C	220	A-C
28	Country Club Dr	East of Bass Lake Rd	Rural	2AU	D	870	D	560	A-C
29	Country Club Dr	West of Knollwood Dr	Community Region	2AU	E	950	D	480	A-C
30	Country Club Dr	East of Cambridge Rd	Community Region	2AU	E	640	A-C	580	A-C
31	Country Club Dr	East of Merrychase Dr	Community Region	2AU	E	600	A-C	330	A-C
32	Country Club Dr	West of Cameron Park Dr	Community Region	2AU	E	640	A-C	730	A-C
33	Durock Rd	West of S. Shingle Rd	Community Region	2AU	E	650	A-C	850	D
34	El Dorado Hills Blvd	South of Wilson Blvd	Community Region	4AD	E	2040	D	1900	D
35	El Dorado Hills Blvd	North of Wilson Blvd	Community Region	4AD	E	2020	D	1860	D
36	El Dorado Hills Blvd	North of Saratoga Way	Community Region	4AD	E	2540	D	2480	D
37	El Dorado Hills Blvd	South of Francisco Dr	Community Region	2AU	E	1390	D	1350	D
38	El Dorado Hills Blvd	South of Green Valley Rd	Community Region	2AU	E	450	A-C	370	A-C
39	El Dorado Hills Blvd	North of Harvard Way	Community Region	4AD	E	1740	A-C	1600	A-C
40	El Dorado Rd	South of US 50	Community Region	2AU	E	540	A-C	630	A-C
41	El Dorado Rd	North of Pleasant Valley Rd	Community Region	2AU	E	420	A-C	410	A-C
42	El Dorado Rd	South of Missouri Flat Rd	Community Region	2AU	E	250	A-C	360	A-C
43	Enterprise Dr	East of Forni Rd	Community Region	2AU	E	270	A-C	390	A-C
44	Fairplay Rd	South of Mt Aukum Rd	Rural	2AU	D	170	A-C	190	A-C
45	Forni Rd	North of SR 49	Community Region	2AU	E	430	A-C	400	A-C
46	Forni Rd	West of Arroyo Vista Way	Community Region	2AU	E	100	A-C	170	A-C
47	Francisco Dr	South of Green Valley Rd	Community Region	2AU	E	1160	D	1200	D
48	French Creek Rd	North of Old French Town Rd	Rural	2AU	D	260	A-C	250	A-C
49	Gold Hill Rd	East of Lotus Road	Rural	2AU	D	290	A-C	180	A-C
50	Gold Hill Rd	East of Cold Springs Rd	Rural	2AU	D	80	A-C	60	A-C
51	Gold Hill Rd	West of Cold Springs Rd	Rural	2AU	D	290	A-C	170	A-C
52	Green Valley Rd	West of Sophia Pkwy	Community Region	2AU	E	2910	F	3360	F
53	Green Valley Rd	West of Weber Creek	Rural	2AU	D	360	A-C	490	A-C
54	Green Valley Rd	West of Silva Valley Rd	Community Region	2AU	E	1140	E	1370	E
55	Green Valley Rd	East of Mormon Island Dr	Community Region	4AD	E	2580	D	3460	D
56	Green Valley Rd	West of Mormon Island Dr	Community Region	4AD	E	2590	D	3460	D
57	Green Valley Rd	East of Sophia Pkwy	Community Region	4AD	E	2630	D	3500	D
58	Green Valley Rd	East of Francisco Dr	Community Region	4AD	E	1700	E	1610	E
59	Green Valley Rd	West of Bass Lake Rd	Community Region	2AU	E	1550	E	1210	E
60	Green Valley Rd	East of Bass Lake Rd	Community Region	2AU	E	1520	E	1380	E
61	Green Valley Rd	East of La Crescenta Dr	Community Region	2AU	E	1150	D	1080	E
62	Green Valley Rd	East of Deer Valley Rd	Rural	2AU	D	620	C	640	D
63	Green Valley Rd	West of Lotus Rd	Rural	2AU	D	880	D	1070	E
64	Green Valley Rd	West of Greenstone Rd	Rural	2AU	D	510	A-C	580	A-C
65	Green Valley Rd	West of Missouri Flat Rd	Community Region	2AU	E	960	D	870	D
66	Green Valley Rd	West of Campus Dr	Rural	2AU	D	450	A-C	520	A-C
67	Greenstone Rd	North of US 50	Rural	2AU	D	370	A-C	370	A-C
68	Greenstone Rd	North of Mother Lode Dr	Community Region	2AU	E	150	A-C	180	A-C



ID	Name	Location	Area	Type	LOS Threshold	2035 General Plan			
						AM Volume	LOS	PM Volume	LOS
69	Grizzly Flat Rd	East of Mt Aukum Rd	Rural	2AU	D	200	A-C	250	A-C
70	Harvard Way	East of El Dorado Hills Blvd	Community Region	4AU	E	1370	A-C	700	A-C
71	Harvard Way	West of Silva Valley Pkwy	Community Region	4AU	E	1300	A-C	920	A-C
72	Ice House Rd	North of US 50	Rural	2AU	D	40	A-C	80	A-C
73	Latrobe Rd	North of County Line	Rural	2AU	D	380	A-C	470	A-C
74	Latrobe Rd	South of Investment Blvd	Community Region	2AU	E	380	A-C	470	A-C
75	Latrobe Rd	North of Golden Foothill Pkwy South	Community Region	4AD	E	2170	D	2500	D
76	Latrobe Rd	North of Investment Blvd	Community Region	2AU	E	810	A-C	980	D
77	Latrobe Rd	North of Golden Foothill Pkwy	Community Region	4AD	E	3540	F	3740	F
78	Latrobe Rd	North of White Rock Rd	Community Region	6AD	E	3030	D	2700	A-C
79	Lotus Rd	South of Thompson Hill Rd	Rural	2AU	D	440	A-C	580	A-C
80	Lotus Rd	North Green Valley Rd	Rural	2AU	D	940	D	1200	D
81	Lotus Rd	South of SR 49	Rural	2AU	D	360	A-C	490	A-C
82	Luneman Rd	West of Lotus Rd	Rural	2AU	D	380	A-C	230	A-C
83	Marshall Rd	East of SR 49	Rural	2AU	D	390	A-C	390	A-C
84	Marshall Rd	East of Garden Valley Rd	Rural	2AU	D	510	A-C	480	A-C
85	Marshall Rd	South of Lower Main St	Rural	2AU	D	60	A-C	70	A-C
86	Meder Rd	East of Cameron Park Dr	Community Region	2AU	E	840	A-C	1040	D
87	Meder Rd	West of Ponderosa Rd	Community Region	2AU	E	570	A-C	650	A-C
88	Missouri Flat Rd	West of El Dorado Rd	Community Region	2AU	E	850	D	720	A-C
89	Missouri Flat Rd	East of El Dorado Rd	Community Region	2AU	E	810	A-C	920	D
90	Missouri Flat Rd	South of China Garden Rd	Community Region	2AU	E	1390	D	1640	E
91	Missouri Flat Rd	North of SR 49	Community Region	2AU	E	1230	D	1310	D
92	Missouri Flat Rd	North of Forni Rd	Exception F	4AD	F	2230	D	3140	D
93	Missouri Flat Rd	South of Forni Rd	Exception F	4AD	F	1950	D	2370	D
94	Mormon Emigrant Trl	East of Sly Park Rd	Rural	2AU	D	80	A-C	110	A-C
95	Mosquito Rd	At City Limit	Community Region	2AU	E	510	A-C	530	A-C
96	Mosquito Rd	South of American River Bridge	Rural	2AU	D	130	A-C	160	A-C
97	Mother Lode Dr	East of French Creek Rd	Community Region	2AU	E	1050	D	990	D
98	Mother Lode Dr	West of Sunset Ln	Community Region	2AU	E	1160	D	1270	D
99	Mother Lode Dr	West of Pleasant Valley Rd	Community Region	2AU	E	880	D	1070	D
100	Mother Lode Dr	East of Pleasant Vally Rd	Community Region	2AU	E	270	A-C	430	A-C
101	Mt Aukum Rd	North of County Line	Rural	2AU	D	160	A-C	170	A-C
102	Mt Aukum Rd	South of Bucks Bar Rd	Rural	2AU	D	310	A-C	360	A-C
103	Mt Aukum Rd	South of Pleasant Valley Rd	Rural	2AU	D	250	A-C	380	A-C
104	Mt Murphy Rd	North of SR 49	Rural	2AU	D	50	A-C	50	A-C
105	Mt Murphy Rd	South of Marshall Rd	Rural	2AU	D	70	A-C	120	A-C
106	N Shingle Rd	South of Green Valley Rd	Rural	2AU	D	540	A-C	600	A-C
107	Newtown Rd	North of Pioneer Hill Rd	Rural	2AU	D	300	A-C	300	A-C
108	Newtown Rd	East of Broadway Rd	Community Region	2AU	E	360	A-C	390	A-C
109	Newtown Rd	North of Pleasant Valley Rd	Rural	2AU	D	310	A-C	290	A-C
110	Old French Town Rd	South of Mother Lode Dr	Community Region	2AU	E	150	A-C	180	A-C
111	Omo Ranch Rd	East of Mt Aukum Rd	Rural	2AU	D	70	A-C	70	A-C
112	Oxford Rd	East of Salida Way	Community Region	2AU	E	550	A-C	680	A-C
113	Palmer Dr	East of Cameron Park Dr	Community Region	2AU	E	630	A-C	1150	D
114	Patterson Dr	South of Pleasant Valley Rd	Community Region	2AU	E	430	A-C	580	A-C
115	Pleasant Valley Rd	East of Mother Lode Dr	Community Region	2AU	E	780	A-C	870	D
116	Pleasant Valley Rd	East of Bucks Bar Rd	Community Region	2AU	E	600	A-C	560	A-C
117	Pleasant Valley Rd	West of Oak Hill Rd	Community Region	2AU	E	960	D	1030	D
118	Pleasant Valley Rd	East of SR 49	Community Region	2AU	E	1260	D	1420	D
119	Pleasant Valley Rd	East of Cedar Ravine Rd	Community Region	2AU	E	1050	D	1060	D
120	Pleasant Valley Rd	East of Newtown Rd	Community Region	2AU	E	530	A-C	540	A-C
121	Ponderosa Rd	North of Jackpine Rd	Rural	2AU	D	160	A-C	140	A-C
122	Pony Express Trl	East of Carson Rd	Community Region	2AU	E	220	A-C	280	A-C
123	Pony Express Trl	East of Gilmore Rd	Community Region	2AU	E	270	A-C	460	A-C
124	Pony Express Trl	West of Forebay Rd	Community Region	2AU	E	270	A-C	510	A-C
125	Rock Creek Rd	East of SR 193	Rural	2AU	D	40	A-C	40	A-C
126	Salmon Falls Rd	At New York Creek Bridge	Rural	2AU	D	310	A-C	340	A-C
127	Salmon Falls Rd	South of Malcolm Dixon Rd	Community Region	2AU	E	810	A-C	740	A-C
128	Salmon Falls Rd	South of Pedro Hill Rd	Rural	2AU	D	180	A-C	170	A-C
129	Salmon Falls Rd	South of Rattlesnake Bar Rd	Rural	2AU	D	50	A-C	60	A-C
130	Serrano Pkwy	East of Silva Valley Pkwy	Community Region	4AD	E	2060	D	1370	A-C
131	Serrano Pkwy	West of Bass Lake Rd	Community Region	2AU	E	1000	D	850	D
132	Shingle Springs Dr	South of US 50	Rural	2AU	D	1000	D	630	A-C
133	Silva Valley Pky	North of US 50	Community Region	4AD	E	2000	D	2370	D
134	Silva Valley Pky	South of Green Valley Rd	Community Region	2AU	E	700	A-C	640	A-C
135	Silva Valley Pky	North of Havard Way	Community Region	2AU	E	1240	D	1100	D
136	Silva Valley Pky	South of Serrano Pkwy	Community Region	4AD	E	1810	A-C	1720	A-C
137	Sly Park Rd	East of Mt Aukum Rd	Rural	2AU	D	290	A-C	320	A-C
138	Sly Park Rd	East of Mormon Emigrant Trail	Rural	2AU	D	300	A-C	400	A-C

ID	Name	Location	Area	Type	LOS Threshold	2035 General Plan			
						AM Volume	LOS	PM Volume	LOS
139	Sly Park Rd	South of Pony Express Trail	Community Region	2AU	E	630	A-C	780	A-C
140	Snows Rd	North of Newtown Rd	Rural	2AU	D	100	A-C	100	A-C
141	Snows Rd	South of Carson Rd	Community Region	2AU	E	370	A-C	240	A-C
142	South Shingle Rd	East of Latrobe Rd	Rural	2AU	D	100	A-C	80	A-C
143	South Shingle Rd	North of Barnett Ranch	Rural	2AU	D	200	A-C	220	A-C
144	South Shingle Rd	South of Sunset Ln	Community Region	2AU	E	440	A-C	670	A-C
145	Starbuck Rd	North of Green Valley Rd	Community Region	2AU	E	160	A-C	200	A-C
146	Union Ridge Rd	West of Hassler Rd	Rural	2AU	D	70	A-C	90	A-C
147	Wentworth Springs Rd	West of Quintette Rd	Rural	2AU	D	40	A-C	60	A-C
148	White Rock Rd	West of Windfield Way	Community Region	2AU	E	1940	F	2660	F
149	White Rock Rd	At County Line	Community Region	2AU	E	2240	F	3380	F
150	White Rock Rd	East of Latrobe Rd	Community Region	2AU	E	1090	D	1500	D
151	White Rock Rd	West of Latrobe Rd	Community Region	4AD	E	2300	D	2920	D

A-C defined as operating between LOS A-C per HCM 2010  
 Indicates deficiency

Draft

ATTACHMENT D

2035 FORECAST

TARGETED GENERAL PLAN AMENDMENT OPERATIONS RESULTS

(all segments presented in alphabetical order)

**Table D-1. TGPA-ZOU LOS Results for US 50**

Route	Seg	EB Postmile	WB Postmile	Segment Length	East of Segment	West of Segment	LOS Threshold	Eastbound						Westbound					
								AM Peak			PM Peak			AM Peak			PM Peak		
								Avg. Speed (mph)	Density <sup>1</sup> (pcpmpl)	LOS <sup>2</sup>	Avg. Speed (mph)	Density <sup>1</sup> (pcpmpl)	LOS <sup>2</sup>	Avg. Speed (mph)	Density <sup>1</sup> (pcpmpl)	LOS <sup>2</sup>	Avg. Speed (mph)	Density <sup>1</sup> (pcpmpl)	LOS <sup>2</sup>
50	1	0	0.857	0.857	SACRAMENTO/EL DORADO COUNTY LINE	LATROBE ROAD	E	65.00	21.28	C	Unstable	>45	F	57.75	36.62	E	65.00	19.22	C
50	2	0.857	3.232	2.375	LATROBE ROAD	BASS LAKE ROAD	D	65.00	13.15	B	63.73	26.66	D	Unstable	>45	F	63.44	27.30	D
50	3	3.232	4.962	1.73	BASS LAKE ROAD	CAMBRIDGE ROAD	D	65.00	17.42	B	Unstable	>45	F	62.40	29.29	D	64.95	22.46	C
50	4	4.962	6.57	1.608	CAMBRIDGE ROAD	CAMERON PARK DRIVE	E	65.00	19.83	C	59.35	34.22	D	64.87	23.05	C	65.00	21.32	C
50	5	6.57	8.564	1.994	CAMERON PARK DRIVE	PONDEROSA ROAD	E	65.00	19.06	C	57.03	37.70	E	61.75	30.43	D	64.63	24.17	C
50	6	8.564	10.295	1.731	PONDEROSA ROAD	SHINGLE SPRINGS	D	65.00	15.07	B	63.57	27.02	D	64.54	24.47	C	64.99	21.99	C
50	7	10.295	12.19	1.895	SHINGLE SPRINGS	GREENSTONE ROAD	D	65.00	14.99	B	63.18	27.82	D	64.60	24.27	C	65.00	19.33	C
50	8	12.19	14.011	1.821	GREENSTONE ROAD	EL DORADO ROAD	D	65.00	12.24	B	65.00	21.81	C	65.00	20.31	C	65.00	18.27	C
50	9	14.011	15.055	1.044	EL DORADO ROAD	MISSOURI FLAT ROAD	E	65.00	11.97	B	65.00	21.01	C	65.00	20.04	C	65.00	17.73	B
50	10	15.055	15.829	0.774	MISSOURI FLAT ROAD	PLACERVILLE, FAIRGROUNDS	E	65.00	8.95	A	65.00	15.49	B	65.00	15.40	B	65.00	13.12	B
50	11	15.829	16.99	1.161	PLACERVILLE, FAIRGROUNDS	WEST PLACERVILLE	E	65.00	10.02	A	65.00	17.82	B	65.00	15.25	B	65.00	14.99	B
50	12	16.99	17.42	0.43	WEST PLACERVILLE	EB OFF TO MAIN STREET	E	65.00	12.15	B	65.00	21.64	C	65.00	18.62	C	65.00	18.27	C
50	18	18.517	18.99	0.473	PLACERVILLE, MOSQUITO ROAD	PLACERVILLE, SCHNELL SCHOOL ROAD	E	55.00	8.95	A	55.00	19.70	C	55.00	18.01	C	55.00	13.48	B
50	19	18.99	20.296	1.306	PLACERVILLE, SCHNELL SCHOOL ROAD	PLACERVILLE, POINT VIEW DRIVE	E	55.00	7.37	A	55.00	15.38	B	55.00	15.06	B	55.00	11.16	B
50	20	20.296	20.741	0.445	PLACERVILLE, POINT VIEW DRIVE	NEW TOWN ROAD	D	65.00	5.17	A	65.00	10.78	A	65.00	10.34	A	65.00	7.66	A
50	23	25.949	28.842	2.893	EAST CAMINO ROAD	SAWMILL (POLLOCK PINES)	E	65.00	3.41	A	65.00	11.05	B	65.00	9.97	A	65.00	7.18	A
50	24	28.842	31.299	2.457	SAWMILL (POLLOCK PINES)	SLY PARK ROAD	E	65.00	4.47	A	65.00	9.13	A	65.00	7.96	A	65.00	5.37	A

<sup>1</sup> Density expressed in pc/mi/ln, passenger cars per mile per lane  
<sup>2</sup> Level of service is based on density as described in Basic Freeway Segment, Chapter 11, HCM 2010  
Indicates deficiency

**Table D-2. TGPA-ZOU LOS Results for Multilane State Highways**

Route	Seg	EB Postmile	WB Postmile	Segment Length	East of Segment	West of Segment	LOS Threshold	Eastbound						Westbound					
								AM Peak			PM Peak			AM Peak			PM Peak		
								Avg. Speed (mph)	Density <sup>1</sup> (pcpmpl)	LOS <sup>2</sup>	Avg. Speed (mph)	Density <sup>1</sup> (pcpmpl)	LOS <sup>2</sup>	Avg. Speed (mph)	Density <sup>1</sup> (pcpmpl)	LOS <sup>2</sup>	Avg. Speed (mph)	Density <sup>1</sup> (pcpmpl)	LOS <sup>2</sup>
50	13	17.42	17.52	0.1	EB OFF TO MAIN STREET	PLACERVILLE, CANAL STREET	E	45.00	19.58	C	44.14	35.37	E	45.00	30.60	D	45.00	29.96	D
50	14	17.52	17.667	0.147	PLACERVILLE, CANAL STREET	PLACERVILLE, JCT. RTE. 49	F	45.00	11.27	B	45.00	23.47	C	45.00	28.80	D	45.00	22.53	C
50	15	17.667	17.788	0.121	PLACERVILLE, JCT. RTE. 49	PLACERVILLE, COLOMA STREET	F	45.00	9.76	A	45.00	20.53	C	45.00	27.73	D	45.00	21.44	C
50	16	17.788	18.032	0.244	PLACERVILLE, COLOMA STREET	PLACERVILLE, BEDFORD AVENUE	F	45.00	9.84	A	45.00	20.80	C	45.00	28.24	D	45.00	21.82	C
50	17	18.032	18.517	0.485	PLACERVILLE, BEDFORD AVENUE	PLACERVILLE, MOSQUITO ROAD OH	F	45.00	8.40	A	45.00	17.67	B	45.00	23.80	C	45.00	18.64	C
50	21	20.741	23.957	3.216	NEW TOWN ROAD	JUNCTION OLD HIGHWAY, CAMINO, WEST	D	60.00	5.63	A	60.00	11.95	B	60.00	11.47	B	60.00	8.55	A
50	22	23.957	25.949	1.992	JUNCTION OLD HIGHWAY, CAMINO, WEST	EAST CAMINO ROAD	E	60.00	3.50	A	60.00	11.47	B	60.00	10.40	A	60.00	7.48	A
50	26	34.219	39.772	5.553	ICEHOUSE ROAD	OLD CARSON ROAD	D	50.00	4.64	A	50.00	9.76	A	50.00	8.48	A	50.00	5.68	A

<sup>1</sup> Density expressed in pc/mi/ln, passenger cars per mile per lane  
<sup>2</sup> Level of service for multi-lane highways is based on density as described in Chapter 14, HCM 2010

**Table D-3. TGPA-ZOU LOS Results for Two-Lane State Highways**

Route	Seg	NB/EB Postmile	SB/WB Postmile	Segment Length	North/East of Segment	South/West of Segment	LOS Threshold	Eastbound						Westbound					
								AM Peak			PM Peak			AM Peak			PM Peak		
								PTSF <sup>1</sup> (%)	PFFS <sup>2</sup> (%)	LOS <sup>3</sup>	PTSF <sup>1</sup> (%)	PFFS <sup>2</sup> (%)	LOS <sup>3</sup>	PTSF <sup>1</sup> (%)	PFFS <sup>2</sup> (%)	LOS <sup>3</sup>	PTSF <sup>1</sup> (%)	PFFS <sup>2</sup> (%)	LOS <sup>3</sup>
49	1	0	1.65	1.65	AMADOR/EL DORADO COUNTY LINE	NASHVILLE, SOUTH	D	63.2%	87.7%	C	30.7%	86.0%	A	24.0%	86.8%	A	63.3%	86.0%	C
49	2	1.65	8.352	6.702	NASHVILLE, SOUTH	CHINA HILL ROAD	D	70.6%	84.5%	D	37.2%	85.7%	A	30.5%	86.5%	A	70.8%	83.1%	D
49	3	8.352	9.494	1.142	CHINA HILL ROAD	EL DORADO, UNION MINE ROAD	D	76.3%	80.3%	D	41.7%	82.7%	B	32.9%	84.1%	A	80.6%	78.8%	D
49	4	9.494	9.641	0.147	EL DORADO, UNION MINE ROAD	EL DORADO, PLEASANT VALLEY ROAD	E	93.5%	65.2%	E	52.1%	69.4%	D	43.0%	70.7%	D	92.0%	62.2%	E
49	5	9.641	11.239	1.598	EL DORADO, PLEASANT VALLEY ROAD	MISSOURI FLAT ROAD	F	96.1%	61.8%	E	64.2%	62.7%	E	56.0%	67.5%	D	94.1%	60.1%	E
49	6	11.239	11.859	0.62	MISSOURI FLAT ROAD	DIAMOND SPRINGS, PLEASANT VALLEY ROAD	F	100.0%	62.1%	E	62.4%	64.7%	E	50.1%	68.4%	D	93.8%	61.6%	E
49	7	11.859	14.463	2.604	DIAMOND SPRINGS, PLEASANT VALLEY ROAD	PLACERVILLE, FISKE ROAD	E	74.5%	77.4%	D	51.8%	79.3%	B	43.8%	80.6%	B	76.7%	75.9%	D
49	8	14.463	14.597	0.134	PLACERVILLE, FISKE ROAD	PLACERVILLE, PACIFIC/ MAIN STREETS	E	92.2%	63.2%	E	64.2%	63.9%	E	57.9%	64.0%	E	92.3%	56.8%	E
49	9	14.597	14.891	0.294	PLACERVILLE, PACIFIC/ MAIN STREETS	PLACERVILLE, JCT. RTE. 50	F	72.7%	74.7%	D	40.2%	78.7%	C	39.5%	79.5%	C	72.5%	74.7%	D
49	10	14.891	15.685	0.794	PLACERVILLE, JCT. RTE. 50	JCT. RTE. 193 NORTH	F	73.2%	72.6%	D	37.7%	75.7%	C	42.7%	76.5%	C	78.7%	67.9%	D
49	11	15.685	16.44	0.755	JCT. RTE. 193 NORTH	DIANA STREET	D	75.4%	75.7%	C	39.2%	78.6%	C	31.2%	80.0%	C	72.7%	75.4%	C
49	12	16.44	19.42	2.98	DIANA STREET	GOLD HILL ROAD	D	66.2%	79.7%	C	39.3%	80.1%	A	33.9%	81.6%	A	68.7%	77.4%	C
49	13	19.42	22.865	3.445	GOLD HILL ROAD	COLOMA, JCT. RTE. 153 WEST	D	55.4%	88.1%	C	29.2%	83.5%	A	25.4%	84.2%	A	58.3%	86.6%	C
49	14	22.865	24.48	1.615	COLOMA, JCT. RTE. 153 WEST	MARSHALL GRADE ROAD (TO GEORGETOWN)	D	73.1%	78.0%	D	42.4%	79.7%	B	36.6%	81.8%	A	73.0%	76.5%	D
49	15	24.48	28.19	3.71	MARSHALL GRADE ROAD (TO GEORGETOWN)	HASTINGS CREEK BRIDGE	D	66.5%	83.6%	C	41.4%	82.7%	B	32.6%	83.7%	A	69.8%	79.4%	C
49	16	28.19	34.466	6.276	HASTINGS CREEK BRIDGE	COOL, JCT. RTE. 193 EAST	D	64.8%	88.0%	C	38.2%	86.4%	A	28.8%	87.3%	A	68.9%	84.7%	C
49	17	34.466	38.233	3.767	COOL, JCT. RTE. 193 EAST	EL DORADO/PLACER COUNTY LINE	F	82.2%	76.8%	D	56.1%	78.4%	C	49.4%	80.3%	B	83.3%	75.6%	D
50	25	31.299	34.219	2.92	SLY PARK ROAD	OLD CARSON ROAD	E	59.0%	81.4%	C	81.1%	78.2%	D	65.0%	82.0%	C	56.9%	81.3%	C
50	27	39.772	46.592	6.82	ICEHOUSE ROAD	W O ALDER RIDGE ROAD	F	64.3%	79.4%	C	84.6%	75.5%	D	80.7%	77.7%	D	67.4%	77.2%	C
50	28	46.592	48.952	2.36	W O ALDER RIDGE ROAD	SILVER FORK ROAD	F	63.8%	79.4%	C	83.5%	75.9%	C	80.5%	77.6%	C	66.5%	77.5%	C
50	29	48.952	53.732	4.78	SILVER FORK ROAD	WRIGHTS LAKE ROAD	F	64.4%	79.2%	C	84.1%	75.8%	D	81.5%	77.3%	D	67.1%	77.3%	C
50	30	53.732	57.892	4.16	WRIGHTS LAKE ROAD	STRAWBERRY LN	F	64.2%	79.4%	C	83.8%	76.0%	D	80.7%	77.7%	D	66.6%	77.7%	C
50	31	57.892	60.192	2.3	STRAWBERRY LN	SLIPPERY FORD ROAD	F	64.1%	79.4%	C	83.6%	76.0%	D	80.5%	77.7%	D	66.5%	77.6%	C
50	32	60.192	63.522	3.33	SLIPPERY FORD ROAD	SIERRA-AT-TAHOE ROAD	F	64.3%	79.2%	C	84.0%	75.7%	D	81.5%	77.2%	D	67.1%	77.2%	C
50	33	63.522	65.619	1.83	SIERRA-AT-TAHOE ROAD	ECHO LAKE ROAD	F	63.9%	79.7%	C	83.4%	76.3%	D	80.2%	78.1%	D	66.3%	77.9%	C
153	1	0	0.12	0.12	JCT. RTE. 49	COLD SPRINGS ROAD	D	22.6%	87.1%	A	61.2%	87.3%	C	62.3%	89.4%	C	35.1%	86.2%	A
153	2	0.12	0.55	0.43	COLD SPRINGS ROAD	MARSHALL'S MONUMENT	D	27.7%	94.6%	A	27.7%	94.6%	A	27.7%	94.5%	A	27.7%	94.5%	A
193	1	0	0.856	0.856	COOL, JCT. RTE. 49	AMERICAN RIVER ROAD	D	35.2%	85.1%	A	73.7%	81.5%	D	73.8%	82.1%	D	44.9%	83.8%	B
193	2	0.856	2.169	1.313	AMERICAN RIVER ROAD	AUBURN LAKE TRAIL ROAD	D	37.2%	84.1%	A	72.9%	80.2%	D	74.2%	80.5%	D	45.9%	83.2%	B
193	3	2.169	12.19	10.021	AUBURN LAKE TRAIL ROAD	EVERGREEN COURT ROAD	D	39.5%	84.4%	A	71.0%	81.3%	D	70.6%	81.5%	D	49.3%	83.3%	B
193	4	12.19	12.699	0.509	EVERGREEN COURT ROAD	GEORGETOWN, LOWER MAIN STREET	D	31.6%	81.3%	C	68.3%	77.9%	C	68.6%	79.9%	C	40.3%	79.5%	C
193	5	12.699	16.105	3.406	GEORGETOWN, LOWER MAIN STREET	BLACK OAK MINE ROAD	D	61.3%	90.3%	C	24.8%	87.8%	A	20.3%	76.1%	A	61.2%	89.7%	C
193	6	16.105	19.4	3.295	BLACK OAK MINE ROAD	GARDEN VALLEY ROAD	D	55.6%	91.9%	C	18.1%	89.3%	A	15.4%	90.0%	A	55.3%	91.6%	C
193	7	19.4	26.95	7.55	GARDEN VALLEY ROAD	JCT. RTE. 49	D	64.8%	87.5%	C	28.9%	86.7%	A	25.8%	86.9%	A	64.3%	86.6%	C

<sup>1</sup> Percent of Time Spent Following - average percent of time that one must follow slower slower vehicles  
<sup>2</sup> Percent of Free-Flow Speed - ability of ones to travel at or near the posted speed limit  
<sup>3</sup> Level of service for two-lane highways is based on criteria in Chapter 15, HCM 2010

**Table D-4. TGPA-ZOU LOS Results for Local Roadways**

ID	Name	Location	Area	Type	LOS Threshold	2035 TGPA-ZOU			
						AM Volume	LOS	PM Volume	LOS
1	Bass Lake Rd	North of Country Club Dr	Rural	2AU	D	1200	D	1110	D
2	Bass Lake Rd	South of Green Valley Rd	Community Region	2AU	E	770	A-C	650	A-C
3	Bass Lake Rd	North of Serrano Pkwy	Community Region	2AU	E	1040	D	1050	D
4	Bassi Rd	West of Lotus Rd	Rural	2AU	D	110	A-C	130	A-C
5	Bedford Ave	At City Limit	Rural	2AU	D	50	A-C	60	A-C
6	Broadway	At City Limit	Community Region	2AU	E	410	A-C	480	A-C
7	Bucks Bar Rd	South Pleasant Valley Rd	Rural	2AU	D	530	A-C	540	A-C
8	Bucks Bar Rd	North of Mt Aukum Rd	Rural	2AU	D	400	A-C	420	A-C
9	Cambridge Rd	North of Country Club Dr	Exception F	2AU	F	770	A-C	970	D
10	Cambridge Rd	South of Country Club Dr	Community Region	2AU	E	750	A-C	900	D
11	Cambridge Rd	At US 50 Overcrossing	Community Region	2AU	E	1120	D	1110	D
12	Cambridge Rd	South of Green Valley Rd	Community Region	2AU	E	610	A-C	640	A-C
13	Cambridge Rd	North of Oxford Rd	Community Region	2AU	E	430	A-C	510	A-C
14	Cameron Park Dr	North of Coach Ln	Community Region	4AD	E	1770	A-C	2990	D
15	Cameron Park Dr	South of Hacienda Dr	Community Region	2AU	E	1440	D	1820	F
16	Cameron Park Dr	South of Green Valley Rd	Community Region	2AU	E	870	D	960	D
17	Cameron Park Dr	North of Mira Loma Dr	Community Region	2AU	E	1150	D	1430	D
18	Cameron Park Dr	South of Robin Ln	Community Region	2AU	E	900	D	1400	D
19	Cameron Park Dr	North of Robin Ln	Exception F	2AU	F	900	D	1410	D
20	Carson Rd	East of Barkley Rd	Community Region	2AU	E	250	A-C	340	A-C
21	Carson Rd	At Carson Ct	Rural	2AU	D	100	A-C	210	A-C
22	Carson Rd	West of Gatlin Rd	Rural	2AU	D	110	A-C	210	A-C
23	Carson Rd	East of Ponderosa Way	Community Region	2AU	E	160	A-C	230	A-C
24	China Garden Rd	East of Missouri Flat Rd	Community Region	2AU	E	450	A-C	600	A-C
25	China Garden Rd	North of SR 49	Community Region	2AU	E	130	A-C	140	A-C
26	Cold Springs Rd	South of Gold Hill Rd	Rural	2AU	D	290	A-C	380	A-C
27	Cold Springs Rd	South of SR 153	Rural	2AU	D	190	A-C	260	A-C
28	Country Club Dr	East of Bass Lake Rd	Rural	2AU	D	860	D	570	A-C
29	Country Club Dr	West of Knollwood Dr	Community Region	2AU	E	830	A-C	510	A-C
30	Country Club Dr	East of Cambridge Rd	Community Region	2AU	E	580	A-C	600	A-C
31	Country Club Dr	East of Merrychase Dr	Community Region	2AU	E	550	A-C	350	A-C
32	Country Club Dr	West of Cameron Park Dr	Community Region	2AU	E	560	A-C	690	A-C
33	Durock Rd	West of S. Shingle Rd	Community Region	2AU	E	650	A-C	870	D
34	El Dorado Hills Blvd	South of Wilson Blvd	Community Region	4AD	E	2050	D	1900	D
35	El Dorado Hills Blvd	North of Wilson Blvd	Community Region	4AD	E	2020	D	1860	D
36	El Dorado Hills Blvd	North of Saratoga Way	Community Region	4AD	E	2550	D	2480	D
37	El Dorado Hills Blvd	South of Francisco Dr	Community Region	2AU	E	1390	D	1350	D
38	El Dorado Hills Blvd	South of Green Valley Rd	Community Region	2AU	E	460	A-C	370	A-C
39	El Dorado Hills Blvd	North of Harvard Way	Community Region	4AD	E	1710	A-C	1580	A-C
40	El Dorado Rd	South of US 50	Community Region	2AU	E	510	A-C	580	A-C
41	El Dorado Rd	North of Pleasant Valley Rd	Community Region	2AU	E	400	A-C	390	A-C
42	El Dorado Rd	South of Missouri Flat Rd	Community Region	2AU	E	240	A-C	330	A-C
43	Enterprise Dr	East of Forni Rd	Community Region	2AU	E	250	A-C	400	A-C
44	Fairplay Rd	South of Mt Aukum Rd	Rural	2AU	D	180	A-C	210	A-C
45	Forni Rd	North of SR 49	Community Region	2AU	E	410	A-C	400	A-C
46	Forni Rd	West of Arroyo Vista Way	Community Region	2AU	E	100	A-C	160	A-C
47	Francisco Dr	South of Green Valley Rd	Community Region	2AU	E	1180	D	1200	D
48	French Creek Rd	North of Old French Town Rd	Rural	2AU	D	260	A-C	260	A-C
49	Gold Hill Rd	East of Lotus Road	Rural	2AU	D	330	A-C	200	A-C
50	Gold Hill Rd	East of Cold Springs Rd	Rural	2AU	D	90	A-C	70	A-C
51	Gold Hill Rd	West of Cold Springs Rd	Rural	2AU	D	330	A-C	200	A-C
52	Green Valley Rd	West of Sophia Pkwy	Community Region	2AU	E	2940	F	3380	F
53	Green Valley Rd	West of Weber Creek	Rural	2AU	D	400	A-C	490	A-C
54	Green Valley Rd	West of Silva Valley Rd	Community Region	2AU	E	1160	E	1360	E
55	Green Valley Rd	East of Mormon Island Dr	Community Region	4AD	E	2600	D	3510	D
56	Green Valley Rd	West of Mormon Island Dr	Community Region	4AD	E	2610	D	3510	D
57	Green Valley Rd	East of Sophia Pkwy	Community Region	4AD	E	2650	D	3540	D
58	Green Valley Rd	East of Francisco Dr	Community Region	4AD	E	1730	E	1660	E
59	Green Valley Rd	West of Bass Lake Rd	Community Region	2AU	E	1530	E	1190	E
60	Green Valley Rd	East of Bass Lake Rd	Community Region	2AU	E	1470	E	1330	D
61	Green Valley Rd	East of La Crescenta Dr	Community Region	2AU	E	1110	D	1040	E
62	Green Valley Rd	East of Deer Valley Rd	Rural	2AU	D	630	C	650	D
63	Green Valley Rd	West of Lotus Rd	Rural	2AU	D	940	D	1130	E
64	Green Valley Rd	West of Greenstone Rd	Rural	2AU	D	520	A-C	590	A-C
65	Green Valley Rd	West of Missouri Flat Rd	Community Region	2AU	E	960	D	900	D
66	Green Valley Rd	West of Campus Dr	Rural	2AU	D	450	A-C	540	A-C
67	Greenstone Rd	North of US 50	Rural	2AU	D	380	A-C	380	A-C
68	Greenstone Rd	North of Mother Lode Dr	Community Region	2AU	E	150	A-C	180	A-C

ID	Name	Location	Area	Type	LOS Threshold	2035 TGPA-ZOU			
						AM Volume	LOS	PM Volume	LOS
69	Grizzly Flat Rd	East of Mt Aukum Rd	Rural	2AU	D	240	A-C	290	A-C
70	Harvard Way	East of El Dorado Hills Blvd	Community Region	4AU	E	1300	A-C	700	A-C
71	Harvard Way	West of Silva Valley Pkwy	Community Region	4AU	E	1210	A-C	880	A-C
72	Ice House Rd	North of US 50	Rural	2AU	D	40	A-C	80	A-C
73	Latrobe Rd	North of County Line	Rural	2AU	D	400	A-C	500	A-C
74	Latrobe Rd	South of Investment Blvd	Community Region	2AU	E	380	A-C	510	A-C
75	Latrobe Rd	North of Golden Foothill Pkwy South	Community Region	4AD	E	2120	D	2430	D
76	Latrobe Rd	North of Investment Blvd	Community Region	2AU	E	810	A-C	1010	D
77	Latrobe Rd	North of Golden Foothill Pkwy	Community Region	4AD	E	3420	F	3640	F
78	Latrobe Rd	North of White Rock Rd	Community Region	6AD	E	2860	D	2700	A-C
79	Lotus Rd	South of Thompson Hill Rd	Rural	2AU	D	520	A-C	670	A-C
80	Lotus Rd	North Green Valley Rd	Rural	2AU	D	1020	D	1290	D
81	Lotus Rd	South of SR 49	Rural	2AU	D	430	A-C	570	A-C
82	Luneman Rd	West of Lotus Rd	Rural	2AU	D	420	A-C	270	A-C
83	Marshall Rd	East of SR 49	Rural	2AU	D	440	A-C	450	A-C
84	Marshall Rd	East of Garden Valley Rd	Rural	2AU	D	590	A-C	570	A-C
85	Marshall Rd	South of Lower Main St	Rural	2AU	D	80	A-C	90	A-C
86	Meder Rd	East of Cameron Park Dr	Community Region	2AU	E	820	A-C	1030	D
87	Meder Rd	West of Ponderosa Rd	Community Region	2AU	E	490	A-C	590	A-C
88	Missouri Flat Rd	West of El Dorado Rd	Community Region	2AU	E	850	D	730	A-C
89	Missouri Flat Rd	East of El Dorado Rd	Community Region	2AU	E	810	A-C	930	D
90	Missouri Flat Rd	South of China Garden Rd	Community Region	2AU	E	1340	D	1660	F
91	Missouri Flat Rd	North of SR 49	Community Region	2AU	E	1170	D	1310	D
92	Missouri Flat Rd	North of Forni Rd	Exception F	4AD	F	2220	D	3180	D
93	Missouri Flat Rd	South of Forni Rd	Exception F	4AD	F	1940	D	2420	D
94	Mormon Emigrant Trl	East of Sly Park Rd	Rural	2AU	D	60	A-C	130	A-C
95	Mosquito Rd	At City Limit	Community Region	2AU	E	540	A-C	560	A-C
96	Mosquito Rd	South of American River Bridge	Rural	2AU	D	160	A-C	190	A-C
97	Mother Lode Dr	East of French Creek Rd	Community Region	2AU	E	1030	D	970	D
98	Mother Lode Dr	West of Sunset Ln	Community Region	2AU	E	1150	D	1270	D
99	Mother Lode Dr	West of Pleasant Valley Rd	Community Region	2AU	E	900	D	1070	D
100	Mother Lode Dr	East of Pleasant Valley Rd	Community Region	2AU	E	260	A-C	400	A-C
101	Mt Aukum Rd	North of County Line	Rural	2AU	D	160	A-C	170	A-C
102	Mt Aukum Rd	South of Bucks Bar Rd	Rural	2AU	D	340	A-C	400	A-C
103	Mt Aukum Rd	South of Pleasant Valley Rd	Rural	2AU	D	280	A-C	420	A-C
104	Mt Murphy Rd	North of SR 49	Rural	2AU	D	40	A-C	40	A-C
105	Mt Murphy Rd	South of Marshall Rd	Rural	2AU	D	90	A-C	150	A-C
106	N Shingle Rd	South of Green Valley Rd	Rural	2AU	D	590	A-C	650	A-C
107	Newtown Rd	North of Pioneer Hill Rd	Rural	2AU	D	360	A-C	360	A-C
108	Newtown Rd	East of Broadway Rd	Community Region	2AU	E	430	A-C	450	A-C
109	Newtown Rd	North of Pleasant Valley Rd	Rural	2AU	D	350	A-C	340	A-C
110	Old French Town Rd	South of Mother Lode Dr	Community Region	2AU	E	120	A-C	150	A-C
111	Omo Ranch Rd	East of Mt Aukum Rd	Rural	2AU	D	80	A-C	70	A-C
112	Oxford Rd	East of Salida Way	Community Region	2AU	E	480	A-C	620	A-C
113	Palmer Dr	East of Cameron Park Dr	Community Region	2AU	E	630	A-C	1140	D
114	Patterson Dr	South of Pleasant Valley Rd	Community Region	2AU	E	370	A-C	510	A-C
115	Pleasant Valley Rd	East of Mother Lode Dr	Community Region	2AU	E	810	A-C	900	D
116	Pleasant Valley Rd	East of Bucks Bar Rd	Community Region	2AU	E	620	A-C	600	A-C
117	Pleasant Valley Rd	West of Oak Hill Rd	Community Region	2AU	E	990	D	1100	D
118	Pleasant Valley Rd	East of SR 49	Community Region	2AU	E	1290	D	1480	D
119	Pleasant Valley Rd	East of Cedar Ravine Rd	Community Region	2AU	E	1120	D	1140	D
120	Pleasant Valley Rd	East of Newtown Rd	Community Region	2AU	E	590	A-C	610	A-C
121	Ponderosa Rd	North of Jackpine Rd	Rural	2AU	D	180	A-C	140	A-C
122	Pony Express Trl	East of Carson Rd	Community Region	2AU	E	230	A-C	300	A-C
123	Pony Express Trl	East of Gilmore Rd	Community Region	2AU	E	310	A-C	500	A-C
124	Pony Express Trl	West of Forebay Rd	Community Region	2AU	E	280	A-C	530	A-C
125	Rock Creek Rd	East of SR 193	Rural	2AU	D	40	A-C	40	A-C
126	Salmon Falls Rd	At New York Creek Bridge	Rural	2AU	D	400	A-C	420	A-C
127	Salmon Falls Rd	South of Malcolm Dixon Rd	Community Region	2AU	E	830	A-C	800	A-C
128	Salmon Falls Rd	South of Pedro Hill Rd	Rural	2AU	D	160	A-C	220	A-C
129	Salmon Falls Rd	South of Rattlesnake Bar Rd	Rural	2AU	D	60	A-C	70	A-C
130	Serrano Pkwy	East of Silva Valley Pkwy	Community Region	4AD	E	1840	A-C	1280	A-C
131	Serrano Pkwy	West of Bass Lake Rd	Community Region	2AU	E	840	A-C	760	A-C
132	Shingle Springs Dr	South of US 50	Rural	2AU	D	990	D	610	A-C
133	Silva Valley Pky	North of US 50	Community Region	4AD	E	1960	D	2300	D
134	Silva Valley Pky	South of Green Valley Rd	Community Region	2AU	E	720	A-C	620	A-C
135	Silva Valley Pky	North of Havard Way	Community Region	2AU	E	1230	D	1080	D
136	Silva Valley Pky	South of Serrano Pkwy	Community Region	4AD	E	1790	A-C	1660	A-C
137	Sly Park Rd	East of Mt Aukum Rd	Rural	2AU	D	320	A-C	360	A-C
138	Sly Park Rd	East of Mormon Emigrant Trail	Rural	2AU	D	340	A-C	440	A-C

ID	Name	Location	Area	Type	LOS Threshold	2035 TGPA-ZOU			
						AM Volume	LOS	PM Volume	LOS
139	Sly Park Rd	South of Pony Express Trail	Community Region	2AU	E	660	A-C	820	A-C
140	Snows Rd	North of Newtown Rd	Rural	2AU	D	110	A-C	110	A-C
141	Snows Rd	South of Carson Rd	Community Region	2AU	E	390	A-C	250	A-C
142	South Shingle Rd	East of Latrobe Rd	Rural	2AU	D	100	A-C	80	A-C
143	South Shingle Rd	North of Barnett Ranch	Rural	2AU	D	200	A-C	220	A-C
144	South Shingle Rd	South of Sunset Ln	Community Region	2AU	E	450	A-C	690	A-C
145	Starbuck Rd	North of Green Valley Rd	Community Region	2AU	E	170	A-C	210	A-C
146	Union Ridge Rd	West of Hassler Rd	Rural	2AU	D	80	A-C	100	A-C
147	Wentworth Springs Rd	West of Quintette Rd	Rural	2AU	D	40	A-C	60	A-C
148	White Rock Rd	West of Windfield Way	Community Region	2AU	E	1870	F	2600	F
149	White Rock Rd	At County Line	Community Region	2AU	E	2130	F	3300	F
150	White Rock Rd	East of Latrobe Rd	Community Region	2AU	E	1080	D	1520	D
151	White Rock Rd	West of Latrobe Rd	Community Region	4AD	E	2160	D	2890	D

A-C defined as operating between LOS A-C per HCM 2010  
 Indicates deficiency

Draft



ATTACHMENT E  
INTERCHANGE VOLUME COMPARISON  
(all segments presented from west to east)

Draft

**Table E-1. Interchange Volume Comparison between the Previous and the Current Models – 2035 GP**

Interchange	Previous Model Future PM PK								Current Model Future PM PK								
	Ramps				Overpass				Ramps				Overpass				
	EB OFF	EB ON	WB OFF	WB ON	Tot_Ramps	NB	SB	Total Ovrpas	EB OFF	EB ON	WB OFF	WB ON	Tot_Ramps	NB	SB	Total Ovrpas	
El Dorado Hills Blvd	1368	1073	1086	941	4468	2678	2262	4940	1393	815	563	1538	4309	3143	1211	4354	
Silva Valley Pkwy	1252	1531	1469	694	4946	1613	1856	3469	739	731	455	405	2330	909	640	1549	
Bass Lake Rd	897	376	506	670	2449	878	427	1305	898	242	395	483	2018	875	365	1240	
Cambridge Rd	892	154	152	586	1784	873	190	1063	851	82	172	654	1759	770	167	937	
Cameron Park Dr	1523	454	797	1228	4002	1961	849	2810	947	763	628	1000	3338	1932	1251	3183	
Ponderosa Rd	1075	640	735	874	3324	1266	826	2092	1213	347	304	889	2753	1453	699	2152	
Shingle Springs Dr	222	123	111	211	667	211	111	322	240	119	145	149	653	207	145	352	
Red Hawk Pkwy	326	139	52	410	927	326	139	465	140	144	98	153	535	239	297	536	
Greenstone Rd	219	81	126	237	663	299	144	443	179	61	87	257	584	372	149	521	
El Dorado Rd	205	342	305	187	1039	265	425	690	226	195	226	206	853	297	353	650	
Missouri Flat Rd	932	931	817	996	3676	1498	1318	2816	730	737	685	566	2718	962	1159	2121	
Placerville Dr (West)	875	332	222	887	2316	1061	534	1595	633	107	0	743	1483	729	79	808	
Schnell School Rd	2	257	193	1	453	1061	534	1595	122	156	38	261	577	251	75	326	
View Point Dr	431	88	61	282	862	306	102	408	330	19	3	211	563	232	11	243	
Smith Flat Rd		9	61		70	12	30	42		46	48		94	0	48	48	
Ridgeway Dr	2	0	273	214	489	0	10	10	285	15	16	155	471	291	22	313	
Sly Park Rd	273	214	165	98	750	174	200	374	454	46	54	209	763	398	272	670	
	Approaches to the Interchanges								Approaches to the Interchanges								
				North_NB	North_SB	South_NB	South_SB	Total Approaches					North_NB	North_SB	South_NB	South_SB	Total Approaches
Ray Lawer Dr	Not an interchange in the previous model			N/A	N/A	N/A	N/A	N/A									
Placerville Dr (East)				496	547			1043					166	314			480
Mosquito Rd				378	272	693	676	2019					409	333	416	476	1634
Carson Rd				152	121			273					39	48			87
	shows locations where TIM fee CIP project was identified																
	indicates where the current model is greater than the previous model																

**Table E-2. Interchange Volume Growth Comparison between the Previous and the Current Models – 2035 GP**

Interchange	Previous Model Future PM PK									Current Model Future PM PK								
	Ramps					Overpass				Ramps					Overpass			
	EB OFF	EB ON	WB OFF	WB ON	Tot_Ramps	NB	SB	Total Ovrpas	EB OFF	EB ON	WB OFF	WB ON	Tot_Ramps	NB	SB	Total Ovrpas		
El Dorado Hills Blvd	3%	0%	0%	4%	2%	4%	3%	3%	-2%	0%	0%	-1%	-1%	2%	0%	2%		
Silva Valley Pkwy																		
Bass Lake Rd	2%	8%	7%	4%	4%	2%	8%	3%	1%	4%	3%	3%	2%	1%	5%	2%		
Cambridge Rd	3%	3%	1%	2%	2%	3%	3%	3%	3%	-5%	0%	3%	2%	2%	1%	2%		
Cameron Park Dr	3%	-1%	1%	3%	2%	3%	0%	2%	2%	1%	1%	3%	2%	4%	2%	3%		
Ponderosa Rd	1%	1%	2%	1%	1%	2%	2%	2%	1%	1%	1%	1%	1%	1%	2%	1%		
Shingle Springs Dr	5%	3%	3%	5%	4%	5%	3%	4%	6%	3%	2%	7%	5%	5%	3%	4%		
Red Hawk Pkwy									1%	0%	0%	1%	0%	0%	0%	0%		
Greenstone Rd	3%	0%	2%	3%	2%	3%	1%	2%	0%	3%	1%	3%	2%	3%	3%	3%		
El Dorado Rd	2%	4%	1%	4%	2%	3%	2%	2%	2%	1%	2%	2%	2%	2%	3%	3%		
Missouri Flat Rd	2%	0%	0%	2%	1%	3%	2%	2%	1%	0%	0%	2%	1%	1%	0%	1%		
Placerville Dr (West)	1%	-1%	-1%	0%	0%	1%	0%	1%	1%	-1%	-100%	1%	0%	1%	-3%	0%		
Schnell School Rd	-10%	-2%	1%		-1%		3%	7%	7%	0%	0%	1%	1%	1%	0%	1%		
View Point Dr	1%	2%	3%	2%	2%	1%	4%	2%	1%	1%	2%	2%	1%	2%	1%	2%		
Smith Flat Rd		-1%	7%		5%	3%	2%	3%		2%	1%		2%		1%	1%		
Ridgeway Dr			1%	1%	1%		1%	1%	0%	0%	0%	0%	0%	0%	0%	0%		
Sly Park Rd	3%	-1%	0%	0%	1%		1%	0%	1%	1%	1%	1%	1%	1%	1%	1%		
						Approaches to the Interchanges								Approaches to the Interchanges				
						North_NB	North_SB	South_NB	South_SB					North_NB	North_SB	South_NB	South_SB	Total Approaches
Ray Lawer Dr	Not an interchange in the previous model			N/A	N/A	N/A	N/A	N/A	N/A									
Placerville Dr (East)																		
Mosquito Rd				1%	1%	1%	1%	1%				1%	2%	1%	2%	2%	2%	
Carson Rd				0%	0%			0%				2%	4%				3%	
	shows locations where TIM fee CIP project was identified																	
	indicates where the current model is greater than the previous model																	

Draft