

**Cameron Meadows
Phase 2
Location Map**



EXHIBIT A

SEC. 27 & POR. SECS. 21 & 28, T.10N., R.9E., M.D.M.

70:01

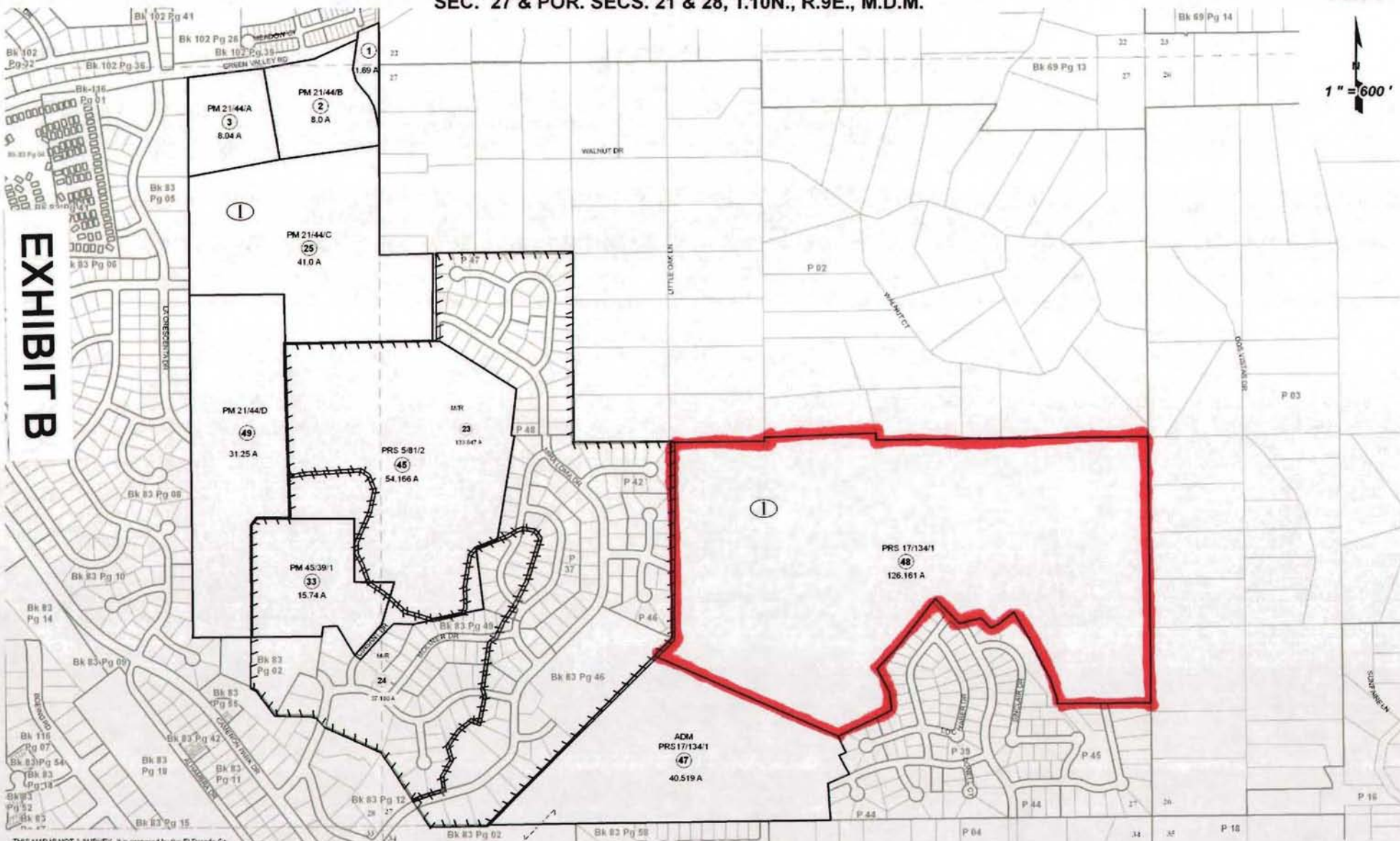
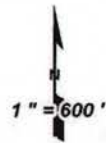


EXHIBIT B

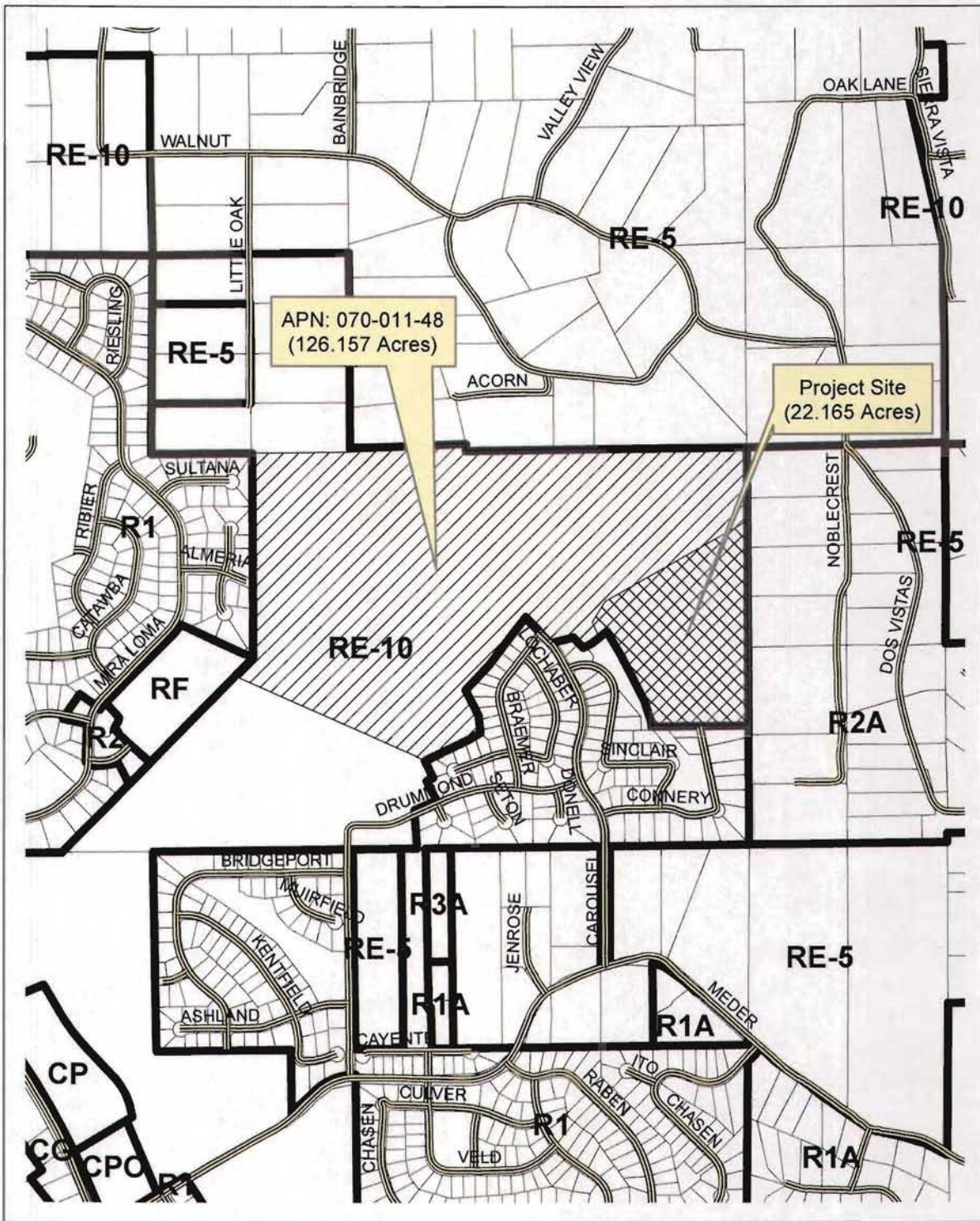
THIS MAP IS NOT A SURVEY. It is prepared by the El Dorado Co Assessor's office for assessment purposes only. Area calculations and characteristics are not guaranteed. Users should verify items such as dimensions and acreage.

Acreages Are Estimates

Adjacent Map Pages Shown in Grey Text
Assessor's Block Numbers Shown in Ellipses
Assessor's Parcel Numbers Shown in Circles

Rev. Aug. 26, 2010

Assessor's Map Bk. 070, Pg. 01
County of El Dorado, CA
15-0868 2B 2 of 10



**Cameron Meadows
Phase 2
Zoning Map**

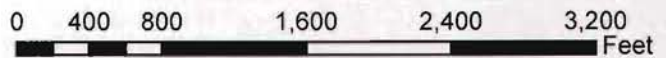
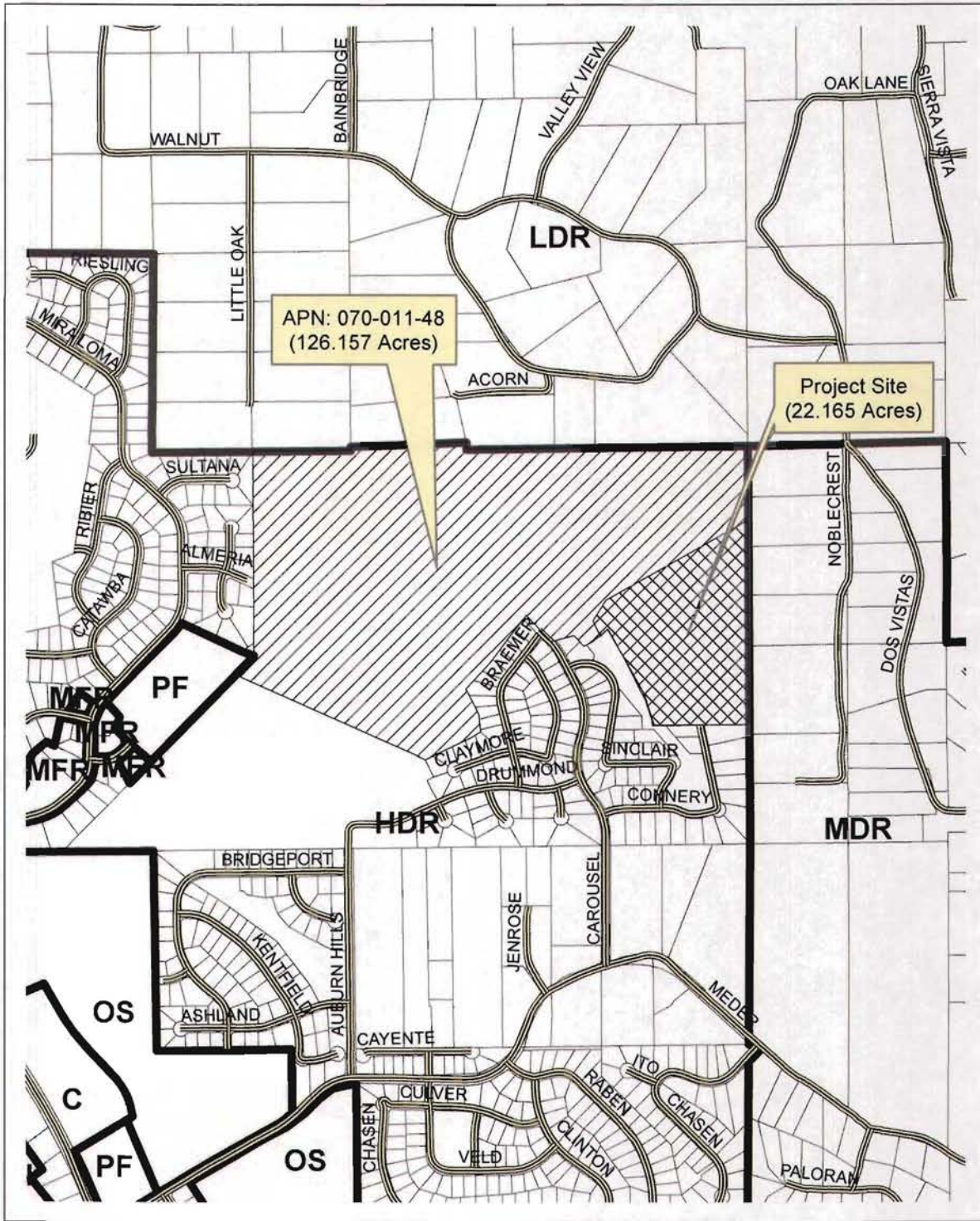


EXHIBIT C



**Cameron Meadows
Phase 2
General Plan Map**

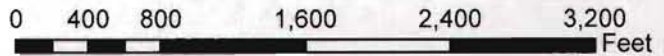
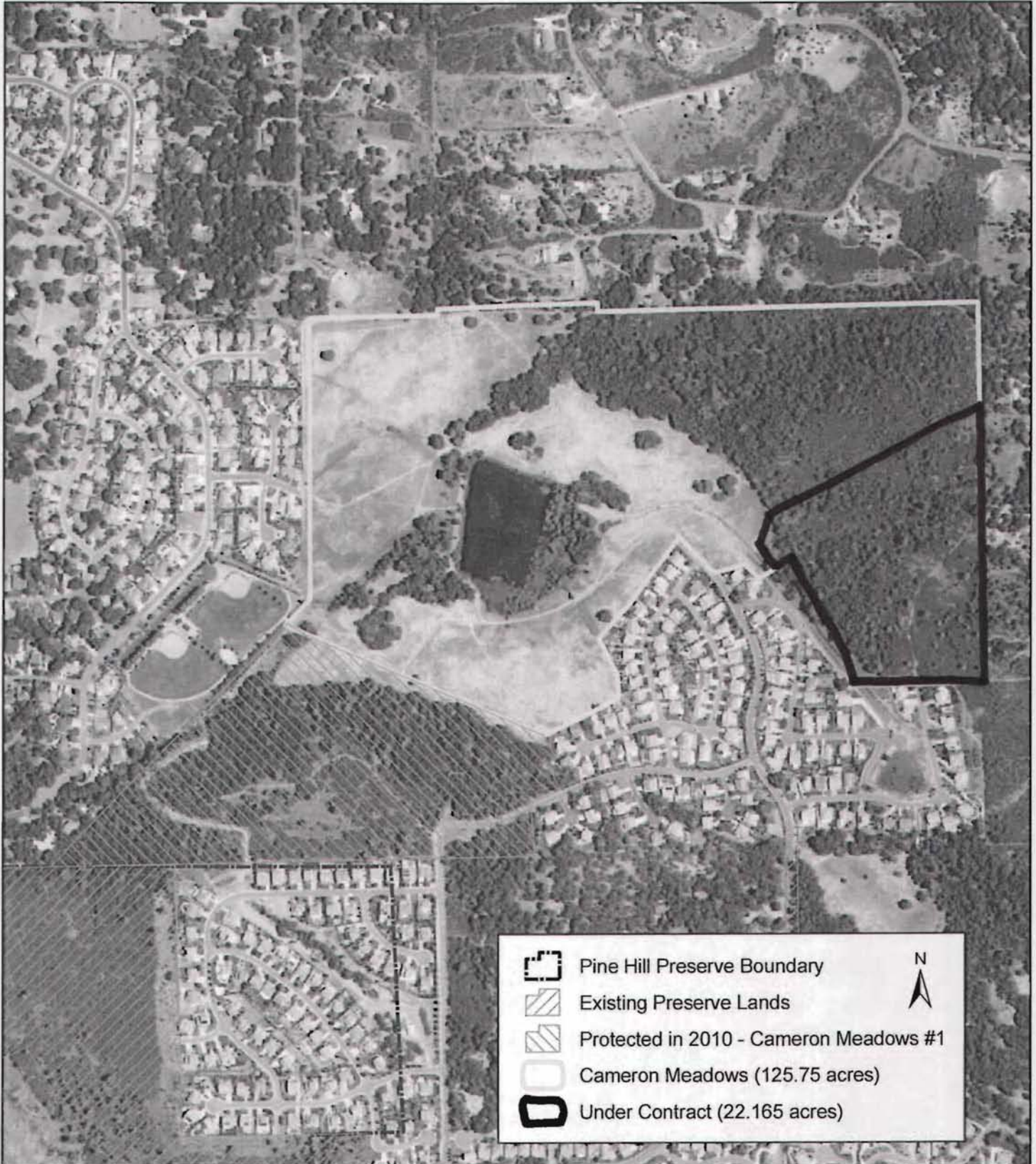


EXHIBIT D

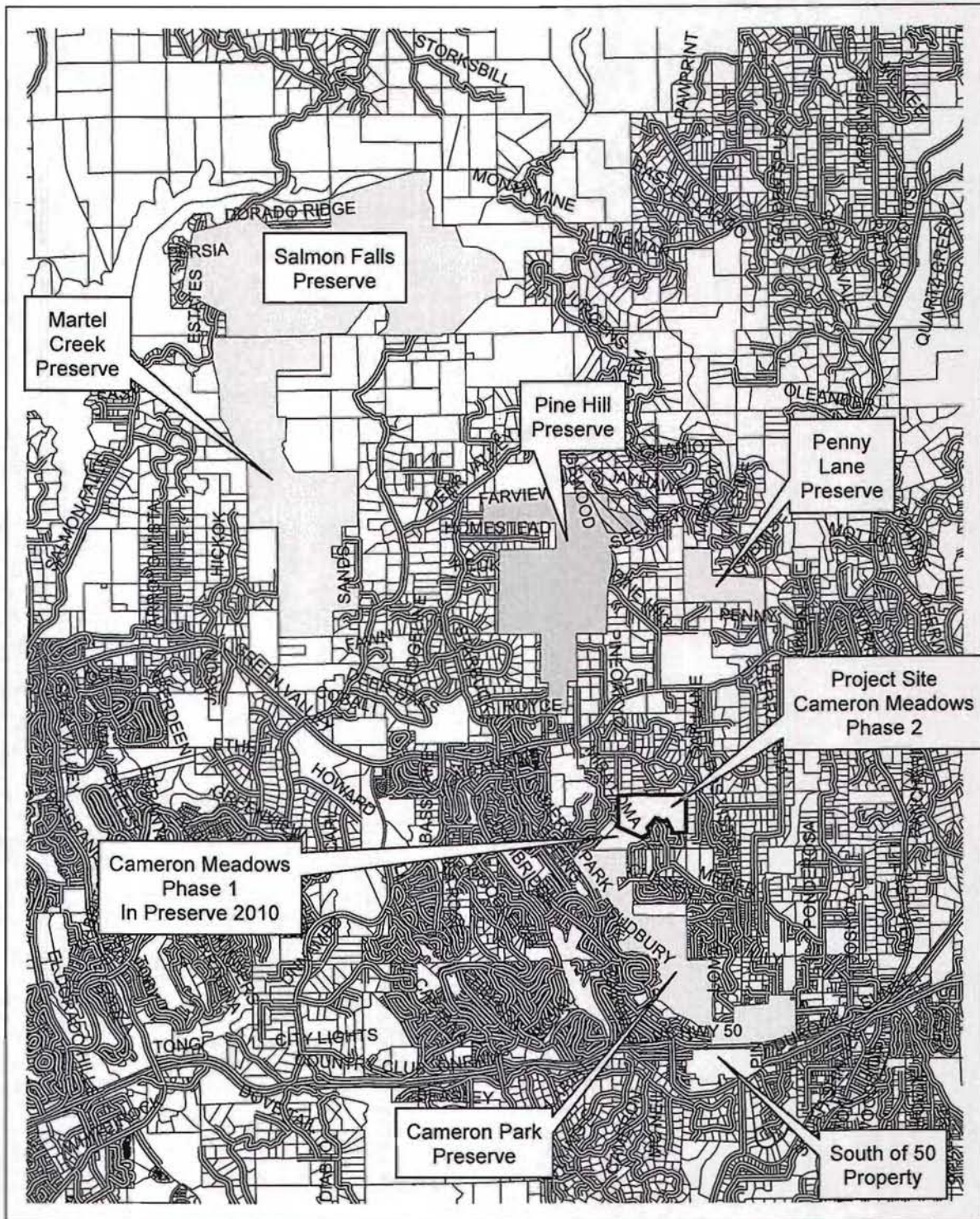
Cameron Meadows



American River Conservancy
February 11, 2013

0 0.05 0.1 0.2 Miles

EXHIBIT E



**Cameron Meadows
Phase 2
Ecological Preserves Map**

EXHIBIT F



North Central Region
1701 Nimbus Road, Suite A
Rancho Cordova, CA 95670-4599
916-358-2900
www.wildlife.ca.gov



September 27, 2013

Alan Ehrgott
American River Conservancy
P.O. Box 562
Coloma, CA 95613

Subject: Letter in Support of American River Conservancy's Efforts and Priorities for the Conservation of Eight Plants Found on Gabbro Soils, El Dorado County

Dear Mr. Ehrgott:

The purpose of this letter is to provide support from the California Department of Fish and Wildlife (CDFW) for the American River Conservancy's (Conservancy) efforts in acquiring land for the long-term conservation of the endangered Stebbins' morning glory (*Calystegia stebbinsi*), Pine Hill ceonothus (*Ceanothus roderickii*), Pine Hill flannelbush (*Fremontodendron californicum* ssp. *decumbens*), El Dorado bedstraw (*Galium californicum* ssp. *sierrae*), threatened Layne's butterweed (*Packera layneae*), California rare species El Dorado mule-ears (*Wyethia reticulata*) and Red Hills soaproot (*Chlorogalum grandiflorum*), and California sensitive species Bisbee Peak rush-rose (*Crocانthemum suffrutescens*), all plants found on gabbro-derived soils in western El Dorado County.

A primary goal identified in the U.S. Fish and Wildlife Service's 2002 *Recovery Plan for Gabbro Soil Plants of the Central Sierra Nevada Foothills* (Recovery Plan) is the acquisition of habitat for the conservation, in perpetuity, of these gabbro plant species. To date, the Conservancy has played an integral role in protecting this important habitat. Cumulatively, development projects within El Dorado County provide one of the greatest threats to the survival and recovery of the listed gabbro plant species. As such, it is important for the Conservancy to continue their efforts in the acquisition of appropriate habitat, while using the best current scientific information available to guide land purchases. Acquisitions should be focused on lands that have willing sellers, will complement the lands already preserved, and have suitable habitat to expand the El Dorado County gabbro-soil protected plant populations.

The 2001 Pine Hill Preserve Cooperative Management Agreement is designed to help guide acquisition and management of lands within the Pine Hill preserve system, which is designed for the protection of the gabbro soil plant species, including the Pine Hill, Salmon Falls/Martel Creek, Penny Lane, and Cameron Park Units, and in addition, an El Dorado bedstraw specialty preserve. Based on our review of currently protected lands within the Preserve, and current species distribution information, the CDFW is concerned that there is an inadequate distribution of species throughout the preserve

Conserving California's Wildlife Since 1870

EXHIBIT G

Mr. Ehrgott
Page 2
September 27, 2013

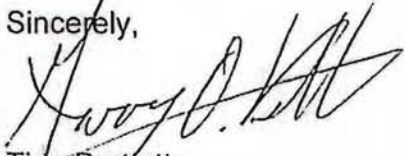
system, specifically El Dorado bedstraw, Stebbins' morning glory, and Pine Hill flannelbush. Therefore, the CDFW fully supports the Conservancy's acquisition of lands within the Cameron Park and Pine Hill areas that contain these listed species.

The CDFW further supports the Conservancy in the acquisition of lands that provide connectivity between the Salmon Falls and Martel Creek units of the preserve, specifically lands containing listed plant species and that enable a range of management tools such as prescribed fire. Since finalizing the Recovery Plan, it has become increasingly difficult, due to development, lack of funding, and willing sellers, to preserve all lands within the recommended preserve system. Therefore, in general, the CDFW supports the Conservancy's efforts in acquiring some habitat adjacent to the parcels identified in the Recovery Plan, as long as the parcels are of comparable or better conservation value, maintain connectivity with existing preserve lands, and assist in meeting conservation goals.

The CDFW has consulted with the U.S. Fish and Wildlife Service and agree on acquisition priorities attached herein as Exhibit A, which is a list of properties found by our two agencies to be the top acquisition priorities for the Pine Hill Preserve. This is not an exhaustive list and may not contain other valuable additions within and outside the boundaries of the Preserve. Each of the proposed acquisitions (Tier 1 & 2) listed in Exhibit A will contribute significantly to the conservation goals outlined in the 2002 Recovery Plan, and, specifically, to total acreage necessary to meet these conservation goals.

We appreciate the Conservancy assisting us in the protection and recovery of listed species through the acquisition of habitat and encourage the continuation of these efforts. If you have any questions please contact Mr. Patrick Moeszinger, Environmental Scientist, at (916) 358-2850, or patrick.moeszinger@wildlife.ca.gov.

Sincerely,



Tina Bartlett
Regional Manager

Fork

Attachment

cc: Jeff Drongesen, CDFW
Jennifer Navicky, CDFW
Patrick Moeszinger, CDFW
Jeremiah Karuzas, U.S. Fish and Wildlife Service, Sacramento, CA
Cay Goude, U.S. Fish and Wildlife Service, Sacramento, CA

Exhibit A

American River Conservancy's Pine Hill Preserve Acquisition Priorities

Tier 1

Cameron Park Unit

Carriage Hill (APN 070-261-77, -79, -80, -81; 20 acres)

Species present/source: *Calystegia stebbinsii*, *Ceanothus roderickii*, *Senecio layneae*, *Chlorogalum grandiflorum*, *Wyethia reticulata*. Botanical survey prepared by Michael Baad, PhD (June 21, 2005) documents abundant populations of all five species throughout the subject parcels.



Cameron Meadows (APN 070-011-18; 167 acres)

Species present/source: *Galium californicum ssp. sierra*, *Ceanothus roderickii*, *Senecio layneae*, *Chlorogalum grandiflorum*, *Wyethia reticulata*. Botanical survey by BLM staff (April, Sept., 2008) and Jones and Stokes, 1997 documents populations of listed plants within the northeast and southwest corners of the subject property, connected with oak woodland, riparian, and pre-historic archaeological sites.

Congregate Care/Pacific Oak Development (APN 083-350-48; approx. 35 acre undeveloped portion)

Species present/source: *Calystegia stebbinsii*, *Ceanothus roderickii*, *Chlorogalum grandiflorum*, *Wyethia reticulata*, and *Crocانthemum suffrutescens*. (Sycamore Env. Consultants Inc., April 2005)

D'Ambrosia (APN 083-020-29; 10.5 acres)

Species present/source: *Calystegia stebbinsii*, *Ceanothus roderickii*, *Senecio layneae*, *Wyethia reticulata*, and *Crocانthemum suffrutescens*. Informal BLM survey.

Scariot (APN 109-230-12; 51.12 acres)

Species present/source: *Calystegia stebbinsii*, *Ceanothus roderickii*, *Chlorogalum grandiflorum*, *Wyethia reticulata*, and *Crocانthemum suffrutescens*. Informal surveys.

La Caille Estates (APN 070-072-44; 23 acres)

Species present/source: *Galium californicum ssp sierra*, *Packera layneae*, *Ceanothus roderickii*, *Chlorogalum grandiflorum*, *Wyethia reticulata*. BLM survey, 2008. CTA survey, 2012.

Pine Hill Unit

Piatenesi/McMahon (APN 102-060-25; 119.5 acres)

Species present/source: *Galium californicum* ssp *sierra*, *Ceanothus roderickii*, *Senecio layneae*, *Chlorogalum grandiflorum*, *Wyethia reticulata*. Informal BLM survey.

Wunschel (APN 069-280-10; 80 acres)

Species present/source: Largest private population of *Fremontodendron californicum* ssp. *decumbens*, *Ceanothus roderickii*, and *Senecio layneae*. Informal surveys.

Tier 2

Smeding (APN 104-09-23; 48 acres)

Species present/source: *Calystegia stebbinsii*, *Chlorogalum grandiflorum*, *Wyethia reticulata*, and *Crocانthemum suffrutescens*. Informal surveys.

Loris (APN 102-010-35, -40; 80 acres)

Species present/source: *Chlorogalum grandiflorum*, *Wyethia reticulata*, and *Crocانthemum suffrutescens*. Informal surveys.