



CONTRACT DRAWINGS FOR THE CONSTRUCTION OF

CRACK SEAL AND REMARK RUNWAY 5-23, TAXIWAYS, APRONS AND TAXILANES

PLACERVILLE AIRPORT

COUNTY OF EL DORADO COMMUNITY DEVELOPMENT AGENCY PLACERVILLE, CA

FAA AIP No.: 3-06-0188-015-15

COUNTY OF EL DORADO PROJECT NO.: 93129

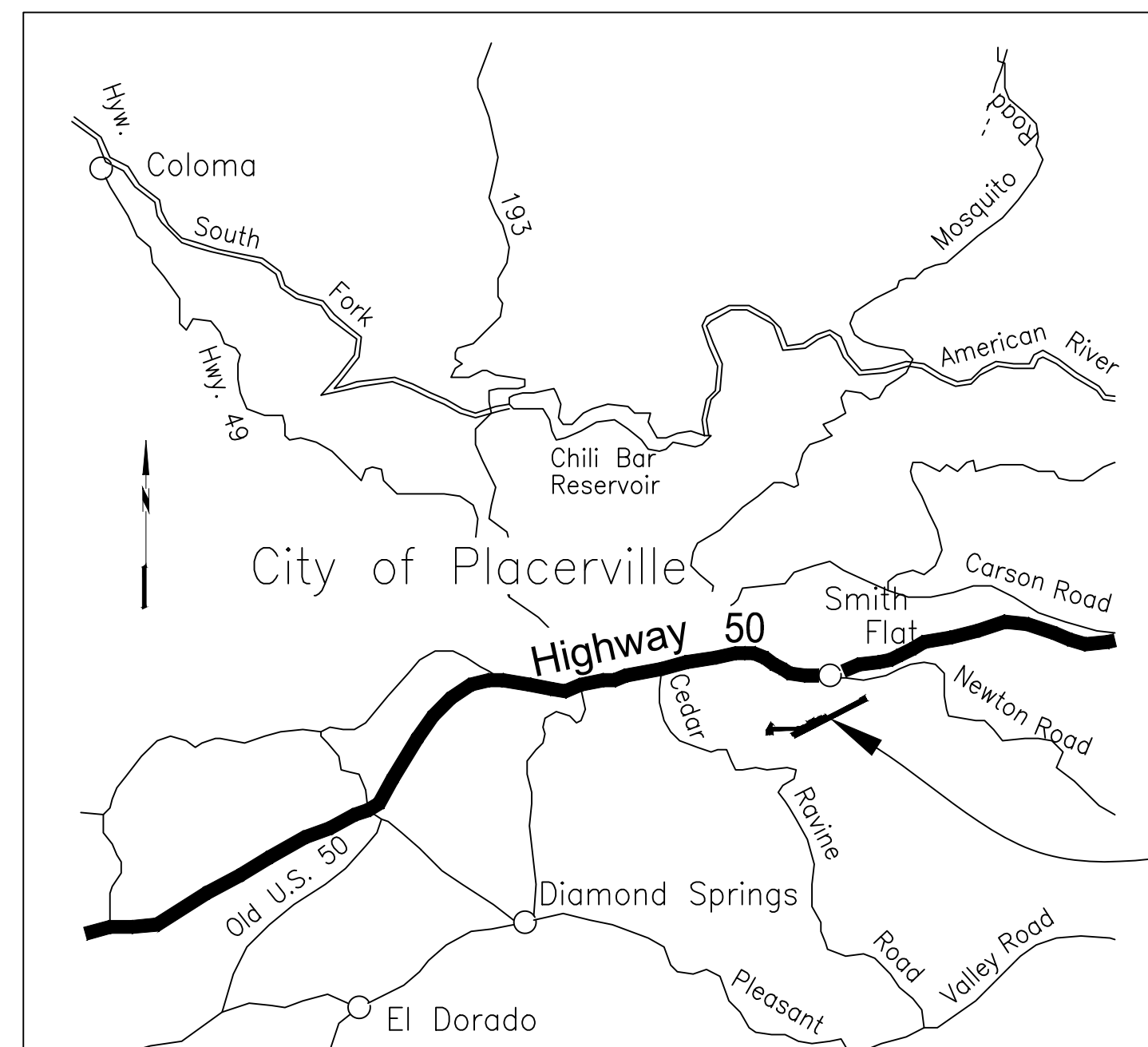
C&S PROJECT NO.: M83.001.002

MAY 2015

100% SUBMISSION

**PRELIMINARY
NOT FOR
CONSTRUCTION**

G-001



PROJECT
LOCATION

LOCATION MAP

NOT TO SCALE

ADOPTED AND APPROVED BY:

BRIAN VEERKAMP
CHAIR EL DORADO COUNTY BOARD OF SUPERVISORS

DATE

APPROVED BY:

STEVEN M. PEDRETTI
DIRECTOR COMMUNITY DEVELOPMENT AGENCY

DATE



1	2	3	4																																																							
C																																																										
		<table border="1"> <thead> <tr> <th>ITEM NO.</th> <th>SPEC</th> <th>DESCRIPTION</th> <th>QUANTITY</th> <th>UNITS</th> </tr> </thead> <tbody> <tr><td>1</td><td>P-109</td><td>CRACK REPAIR (GREATER THAN 2 INCH)</td><td>375</td><td>LF</td></tr> <tr><td>2</td><td>P-107</td><td>CRACK SEALING (1 INCH TO 2 INCHES)</td><td>6,440</td><td>LF</td></tr> <tr><td>3</td><td>P-107</td><td>CRACK SEALING (1/4 INCH to 1 INCH)</td><td>31,470</td><td>LF</td></tr> <tr><td>4</td><td>P-156</td><td>COMPLIANCE W/POLLUTION, EROSION & SILTATION CONTROL</td><td>1</td><td>LS</td></tr> <tr><td>5</td><td>P-620</td><td>TAXIWAY AND APRON MARKING (YELLOW REFLECTORIZED)</td><td>10,500</td><td>SF</td></tr> <tr><td>6</td><td>P-620</td><td>TAXIWAY AND APRON MARKING (YELLOW NON-REFLECTORIZED)</td><td>1,750</td><td>SF</td></tr> <tr><td>7</td><td>P-620</td><td>RUNWAY PAVEMENT MARKING (WHITE REFLECTORIZED)</td><td>27,710</td><td>SF</td></tr> <tr><td>8</td><td>P-620</td><td>RUNWAY PAVEMENT MARKING (WHITE NON-REFLECTORIZED)</td><td>1,170</td><td>SF</td></tr> <tr><td>9</td><td>M-100</td><td>MAINTENANCE AND PROTECTION OF TRAFFIC</td><td>1</td><td>LS</td></tr> <tr><td>10</td><td>M-200</td><td>MOBILIZATION</td><td>1</td><td>LS</td></tr> </tbody> </table>	ITEM NO.	SPEC	DESCRIPTION	QUANTITY	UNITS	1	P-109	CRACK REPAIR (GREATER THAN 2 INCH)	375	LF	2	P-107	CRACK SEALING (1 INCH TO 2 INCHES)	6,440	LF	3	P-107	CRACK SEALING (1/4 INCH to 1 INCH)	31,470	LF	4	P-156	COMPLIANCE W/POLLUTION, EROSION & SILTATION CONTROL	1	LS	5	P-620	TAXIWAY AND APRON MARKING (YELLOW REFLECTORIZED)	10,500	SF	6	P-620	TAXIWAY AND APRON MARKING (YELLOW NON-REFLECTORIZED)	1,750	SF	7	P-620	RUNWAY PAVEMENT MARKING (WHITE REFLECTORIZED)	27,710	SF	8	P-620	RUNWAY PAVEMENT MARKING (WHITE NON-REFLECTORIZED)	1,170	SF	9	M-100	MAINTENANCE AND PROTECTION OF TRAFFIC	1	LS	10	M-200	MOBILIZATION	1	LS	C
ITEM NO.	SPEC	DESCRIPTION	QUANTITY	UNITS																																																						
1	P-109	CRACK REPAIR (GREATER THAN 2 INCH)	375	LF																																																						
2	P-107	CRACK SEALING (1 INCH TO 2 INCHES)	6,440	LF																																																						
3	P-107	CRACK SEALING (1/4 INCH to 1 INCH)	31,470	LF																																																						
4	P-156	COMPLIANCE W/POLLUTION, EROSION & SILTATION CONTROL	1	LS																																																						
5	P-620	TAXIWAY AND APRON MARKING (YELLOW REFLECTORIZED)	10,500	SF																																																						
6	P-620	TAXIWAY AND APRON MARKING (YELLOW NON-REFLECTORIZED)	1,750	SF																																																						
7	P-620	RUNWAY PAVEMENT MARKING (WHITE REFLECTORIZED)	27,710	SF																																																						
8	P-620	RUNWAY PAVEMENT MARKING (WHITE NON-REFLECTORIZED)	1,170	SF																																																						
9	M-100	MAINTENANCE AND PROTECTION OF TRAFFIC	1	LS																																																						
10	M-200	MOBILIZATION	1	LS																																																						
C1	C2	C3																																																								
NOT USED NOT TO SCALE	NOT USED NOT TO SCALE	QUANTITIES NOT TO SCALE																																																								

1	2	3	4																		
B																					
A																					
<p>GENERAL NOTES</p> <ol style="list-style-type: none"> THE CONTRACTOR'S ATTENTION IS DIRECTED TO SECTION 80, ATTACHMENT A - CONSTRUCTION SAFETY AND PHASING PLAN (CSPP) OF THE GENERAL PROVISIONS. THESE DRAWINGS HAVE BEEN PREPARED, IN PART, BASED UPON RECORD DRAWINGS AND/OR CAD FILES FURNISHED BY OTHERS. WHILE THIS INFORMATION IS BELIEVED TO BE RELIABLE, THOSE UTILIZING THE INFORMATION ON THESE DRAWINGS ARE ADVISED TO OBTAIN INDEPENDENT VERIFICATION OF ITS ACCURACY BEFORE USING IT FOR ANY PURPOSE. THE ACTUAL LOCATION AND ELEVATION OF ALL UTILITIES SHALL BE FIELD VERIFIED BY THE CONTRACTOR PRIOR TO THE START OF CONSTRUCTION. IN THE EVENT OF DAMAGE TO EXISTING UTILITIES OR CABLES, THE ENGINEER AND OWNER SHALL BE NOTIFIED IMMEDIATELY. THE CONTRACTOR SHALL REPAIR ALL DAMAGE TO UTILITIES OR CABLES, AS DIRECTED BY THE ENGINEER, IMMEDIATELY AND AT THE CONTRACTOR'S EXPENSE. ALL AREAS DISTURBED AS A RESULT OF THE CONTRACTOR'S STAGING AND CONSTRUCTION OPERATIONS SHALL BE RESTORED EQUAL TO OR BETTER THAN ORIGINAL CONDITION AT THE CONTRACTOR'S EXPENSE. ALL DIRT, DUST, STONES AND LOOSE DEBRIS SHALL BE CONTINUOUSLY REMOVED FROM ALL PAVED SURFACES DURING THIS CONTRACT. THE CONTRACTOR SHALL RECONSTRUCT AND MAINTAIN EXISTING ACCESS ROADS AS REQUIRED FOR ACCESS TO THE WORK AREAS. THE CONTRACTOR SHALL CONSTRUCT AND MAINTAIN PROPOSED GRAVEL ACCESS ROADS AT THE APPROXIMATE LOCATION SHOWN (IF NECESSARY). PROPOSED ACCESS ROADS SHALL BE REMOVED UPON COMPLETION OF WORK AND THE AREA RESTORED TO ORIGINAL CONDITION. ALL OF THE CONTRACTOR'S OPERATIONS SHALL REMAIN ON AIRPORT PROPERTY AT ALL TIMES. UNDER NO CIRCUMSTANCES WILL THE CONTRACTOR BE ALLOWED ON ADJACENT PROPERTY. THIS CONTRACT DOES NOT ALLOW FOR PRICE INCREASES DUE TO ESCALATION IN COST OF UNIT BID ITEMS. THE CONTRACTOR SHALL TAKE THIS INTO CONSIDERATION WHEN PREPARING UNIT PRICES FOR BID. 	<p style="text-align: center;"><u>SHEET INDEX</u></p> <table border="1"> <thead> <tr> <th>SHEET REFERENCE NO.</th> <th>TITLE</th> </tr> </thead> <tbody> <tr><td>G-001</td><td>TITLE SHEET</td></tr> <tr><td>G-002</td><td>GENERAL NOTES, QUANTITIES AND SHEET LIST</td></tr> <tr><td>G-101</td><td>GENERAL PLAN</td></tr> <tr><td>G-102</td><td>CONSTRUCTION SAFETY PHASING PLAN AND DETAILS</td></tr> <tr><td>C-101</td><td>EROSION CONTROL PLAN</td></tr> <tr><td>CM-101</td><td>CRACK SEAL AND MARKING PLAN</td></tr> <tr><td>CM-102</td><td>CRACK SEAL AND MARKING PLAN</td></tr> <tr><td>C-501</td><td>DETAIL SHEET</td></tr> </tbody> </table>	SHEET REFERENCE NO.	TITLE	G-001	TITLE SHEET	G-002	GENERAL NOTES, QUANTITIES AND SHEET LIST	G-101	GENERAL PLAN	G-102	CONSTRUCTION SAFETY PHASING PLAN AND DETAILS	C-101	EROSION CONTROL PLAN	CM-101	CRACK SEAL AND MARKING PLAN	CM-102	CRACK SEAL AND MARKING PLAN	C-501	DETAIL SHEET		
SHEET REFERENCE NO.	TITLE																				
G-001	TITLE SHEET																				
G-002	GENERAL NOTES, QUANTITIES AND SHEET LIST																				
G-101	GENERAL PLAN																				
G-102	CONSTRUCTION SAFETY PHASING PLAN AND DETAILS																				
C-101	EROSION CONTROL PLAN																				
CM-101	CRACK SEAL AND MARKING PLAN																				
CM-102	CRACK SEAL AND MARKING PLAN																				
C-501	DETAIL SHEET																				
A1	A2																				
GENERAL NOTES NOT TO SCALE	SHEET LIST NOT TO SCALE																				

Underground Service Alert



Call: TOLL FREE
"811"

TWO WORKING DAYS BEFORE YOU DIG



C&S Engineers, Inc.
8950 Cal Center Drive
Suite 112
Sacramento, California 95826
Phone: 916-364-1470
www.cscos.com

PRELIMINARY
NOT FOR
CONSTRUCTION



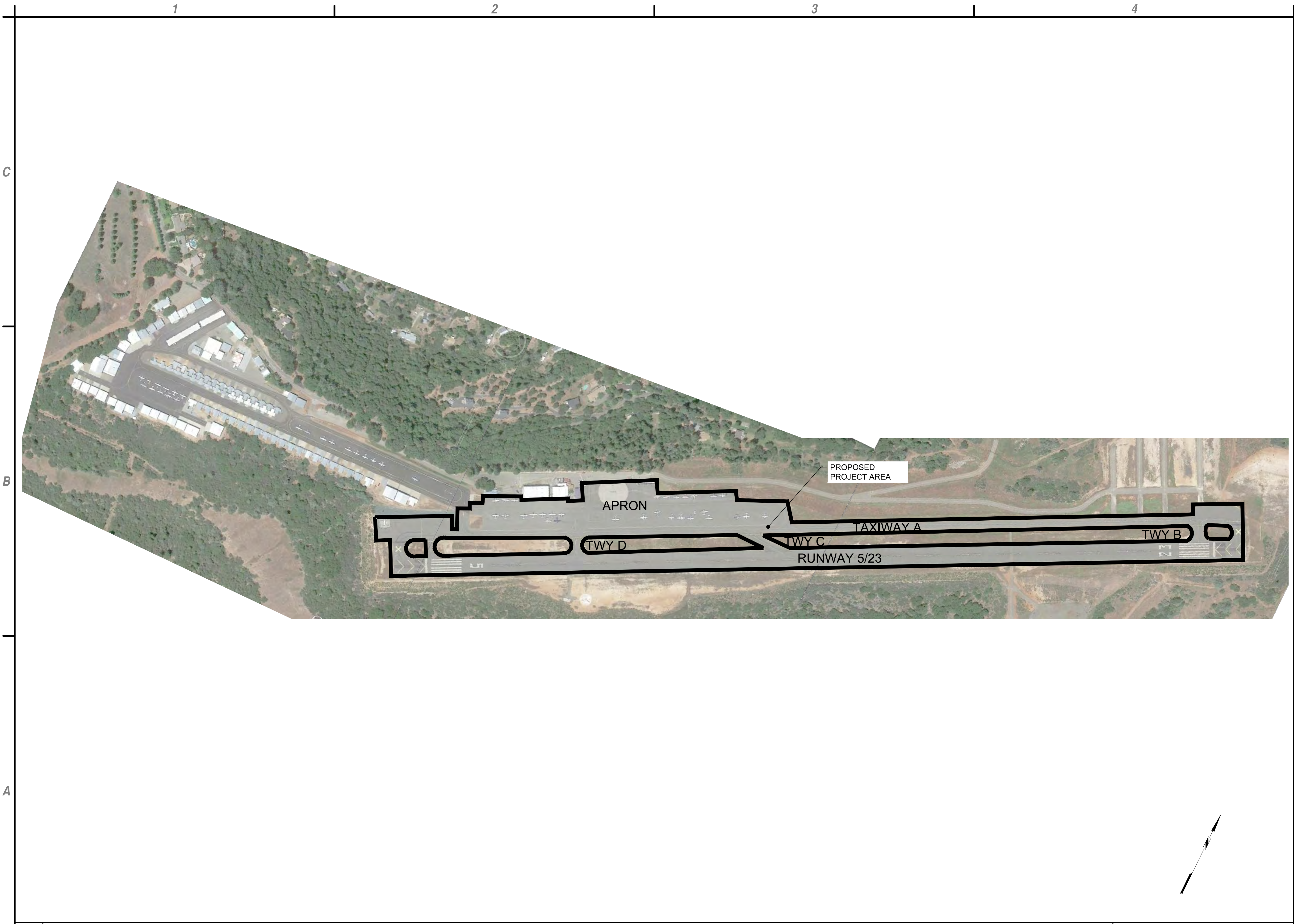
**CRACK SEAL AND REMARK RUNWAY 5-23,
TAXIWAYS, APRONS AND TAXILANES
PLACERVILLE AIRPORT
EL DORADO COUNTY
PLACERVILLE, CALIFORNIA**

MARK	DATE	DESCRIPTION
REVISIONS		
PROJECT NO: M83.001.002		
DATE: AUGUST 2014		
DRAWN BY: NGM		
DESIGNED BY: NGM		
CHECKED BY: JLM		

**GENERAL
NOTES,
QUANTITIES
AND SHEET LIST**

G-002

Jun 02, 2015 - 1:49pm F:\Project\M83 - El Dorado County\M83001002 - Placerville Crack Repair Detail\Design\CADD\Sheet Files\M83.001.002-G-002 GEN NOTES & QUANTITIES.dwg



C&S Engineers, Inc.
 8950 Cal Center Drive
 Suite 112
 Sacramento, California 95826
 Phone: 916-364-1470
 www.cscos.com

PRELIMINARY
 NOT FOR
 CONSTRUCTION



**CRACK SEAL AND REMARK RUNWAY 5-23,
 TAXIWAYS, APRONS AND TAXILANES
 PLACERVILLE AIRPORT
 EL DORADO COUNTY
 PLACERVILLE, CALIFORNIA**

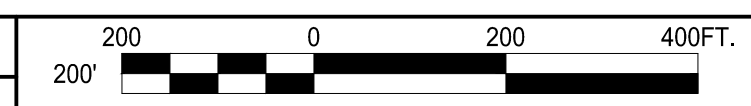
Jun 02, 2015 - 11:35am F:\Project\M83 - El Dorado County\M83001002 - Placerville Crack Seal Report Design\CADD\Sheet Files\M83.001.002_G-101_GENERAL_PLAN.dwg

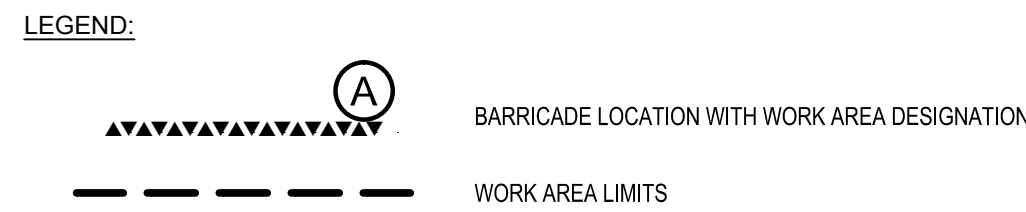
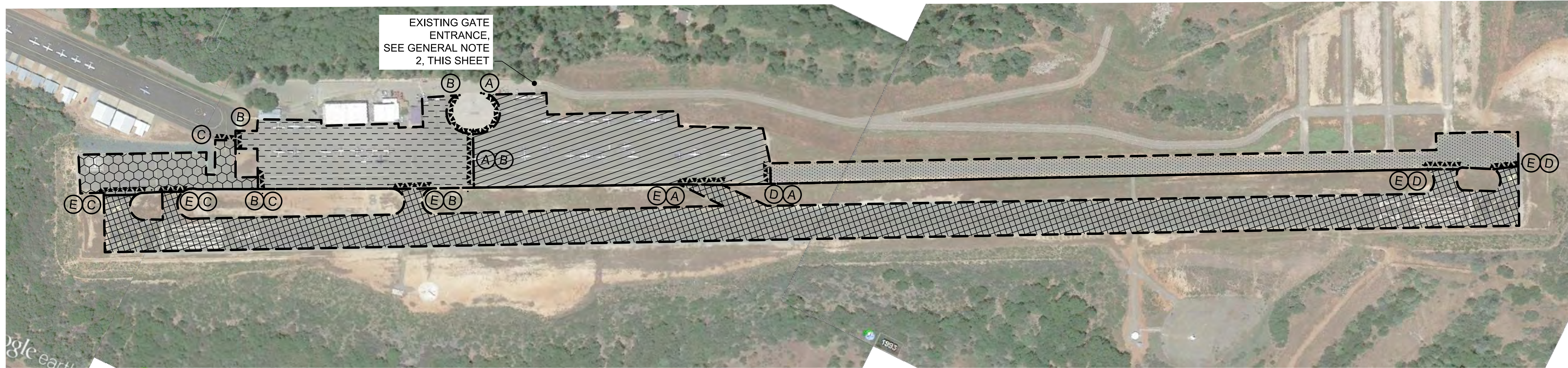
MARK	DATE	DESCRIPTION
REVISIONS		
PROJECT NO: M83.001.002		
DATE: AUGUST 2014		
DRAWN BY: NGM		
DESIGNED BY: NGM		
CHECKED BY: JLM		

**GENERAL
 PLAN**

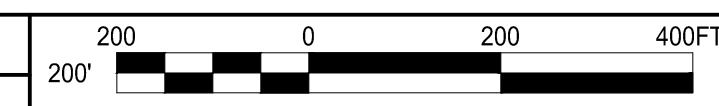
G-101

A1 GENERAL PLAN
 SCALE: 1" = 250'

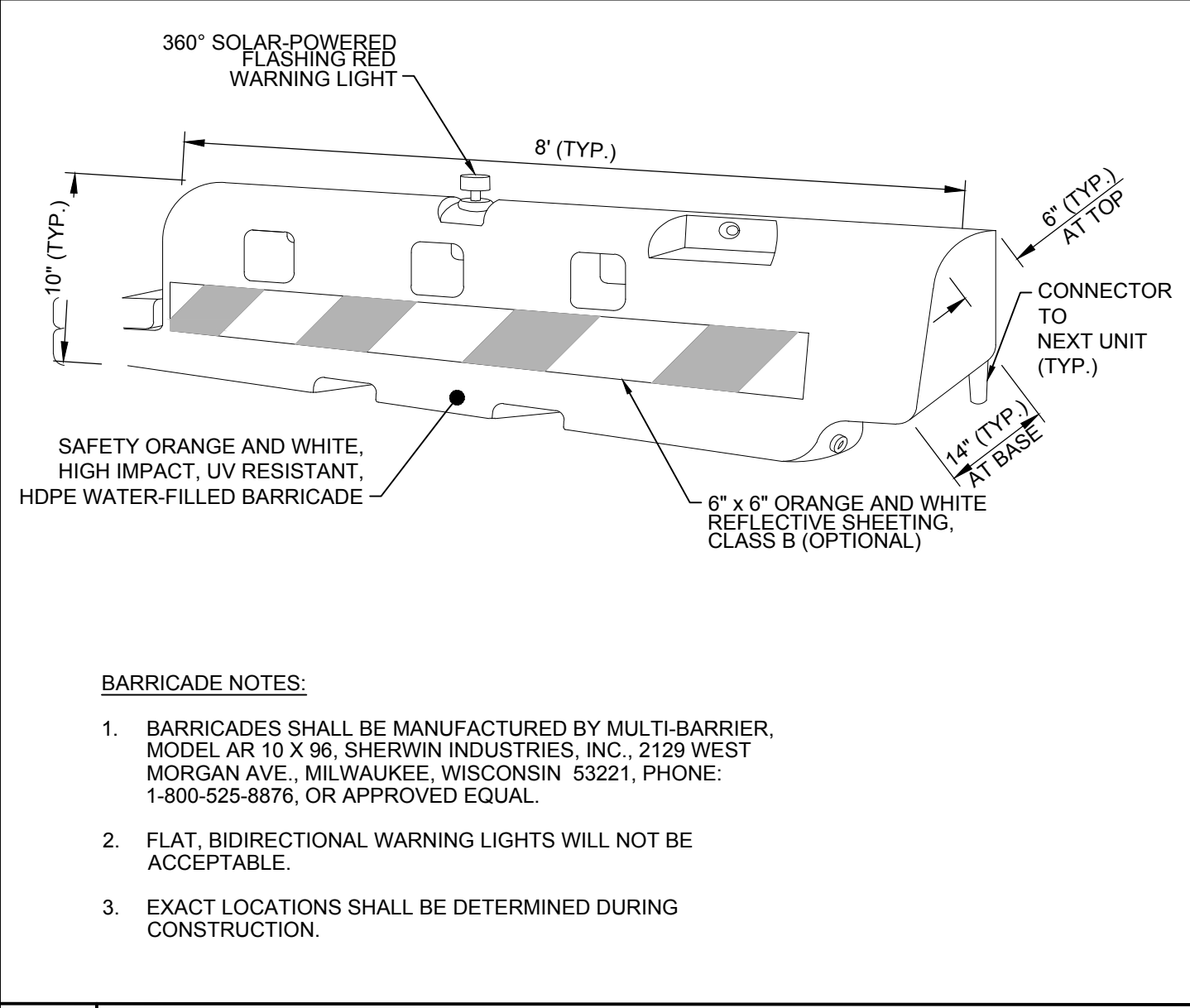




- GENERAL NOTES:**
- FOR WORK AREA DESIGNATED **(A B C D E F)** BARRICADES SHALL BE MOVED ACCORDINGLY BASED ON WORK AREA BEING CONSTRUCTED WITH APPROVAL OF ENGINEER.
 - CONSTRUCTION ACCESS ROAD AND STAGING AREA SHALL BE RETURNED TO ITS PREVIOUS CONDITION AFTER PROJECT COMPLETION BY THE CONTRACTOR.
 - CONTRACTOR IS TO USE ALL SECURITY MEASURES WHILE USING EXISTING GATE ACCESS PER CONTRACT DOCUMENTS.
 - CONTRACTOR STAGING AREA TO BE LOCATED WITHIN LIMITS OF WORK AREA A OR B, AS DESIGNATED BY THE OWNER AND ENGINEER.



B1 CONSTRUCTION SAFETY PHASING PLAN
SCALE: 1" = 200'-0"



A1 HDPE LOW-PROFILE BARRICADE DETAIL
SCALE: NOT TO SCALE

A2 NOT USED
SCALE: NOT TO SCALE

WORK AREA	AIR OPERATIONS AREA	WORK AREA	AIR OPERATIONS AREA
	WORK AREA A: PERFORM CRACK SEAL/REPAIR ON THE PARALLEL TAXIWAY AND APRON, ALLOWING AIRCRAFT ACCESS TO THE FUEL FARM. WORK AREA CLOSED FOR 72 HOURS.		WORK AREA F: RE-STRIPE (ALL AREAS) PAVEMENT MARKINGS IN ALL PROJECT AREAS. RUNWAY CLOSED FOR 48 HOURS. REMAINING WORK AREAS CLOSED FOR 72 HOURS. WITH ONE (1) - TWELVE (12) HOUR DAY FOR RUNWAY STRIPING.
	WORK AREA B: PERFORM CRACK SEAL/REPAIR ON THE PARALLEL TAXIWAY AND APRON, ALLOWING AIRCRAFT ACCESS TO THE FUEL FARM. WORK AREA CLOSED FOR 72 HOURS.		
	WORK AREA C: PERFORM CRACK SEAL/REPAIR ON THE WEST PORTION OF THE PARALLEL TAXIWAY, AND APRON CONNECTOR TAXILANE. WORK AREA CLOSED FOR 24 HOURS.		
	WORK AREA D: PERFORM CRACK SEAL/REPAIR ON THE EAST PORTION OF THE PARALLEL TAXIWAY. WORK AREA CLOSED FOR 72 HOURS.		
	WORK AREA E: PERFORM CRACK SEAL/REPAIR ON RUNWAY 5-23, AND CONNECTOR TAXILANES TO THE PARALLEL TAXIWAY. RUNWAY CLOSED FOR TWO - TWELVE (12) HOUR DAYS.		

A3 PHASING PLAN
SCALE: NOT TO SCALE



C&S Engineers, Inc.
8950 Cal Center Drive
Suite 112
Sacramento, California 95826
Phone: 916-364-1470
www.cscos.com

PRELIMINARY
NOT FOR
CONSTRUCTION



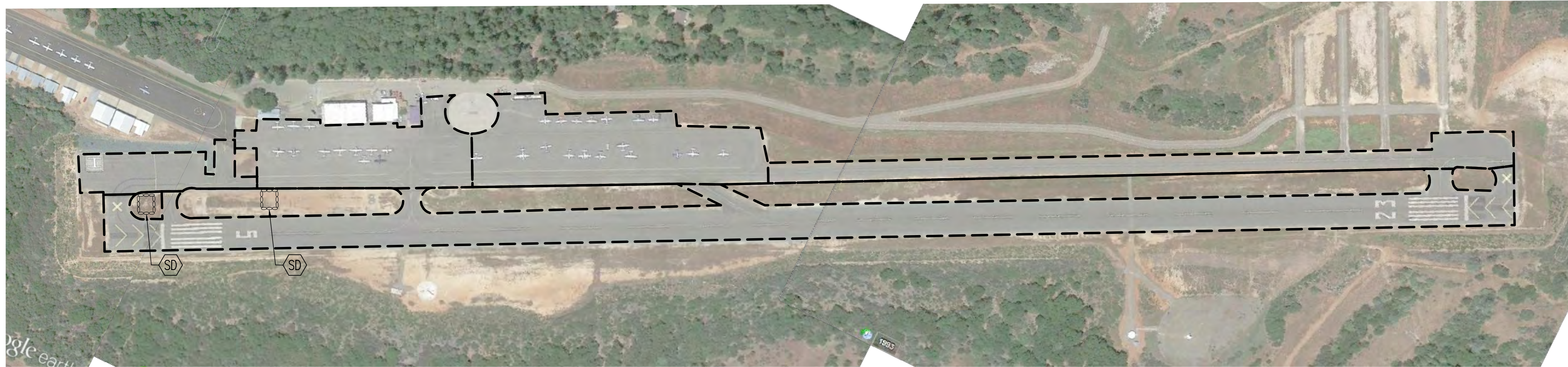
CRACK SEAL AND REMARK RUNWAY 5-23, TAXIWAYS, APRONS AND TAXILANES PLACERVILLE AIRPORT EL DORADO COUNTY PLACERVILLE, CALIFORNIA

Jun 03, 2015 - 8:15am - B:\Bum - El Dorado County\MS3\01\002 - G-102 - CSPP.dwg

MARK	DATE	DESCRIPTION
REVISIONS		
		PROJECT NO: M83.001.002
		DATE: AUGUST 2014
		DRAWN BY: NGM
		DESIGNED BY: NGM
		CHECKED BY: JLM

CONSTRUCTION SAFETY PHASING PLAN AND DETAILS

G-102



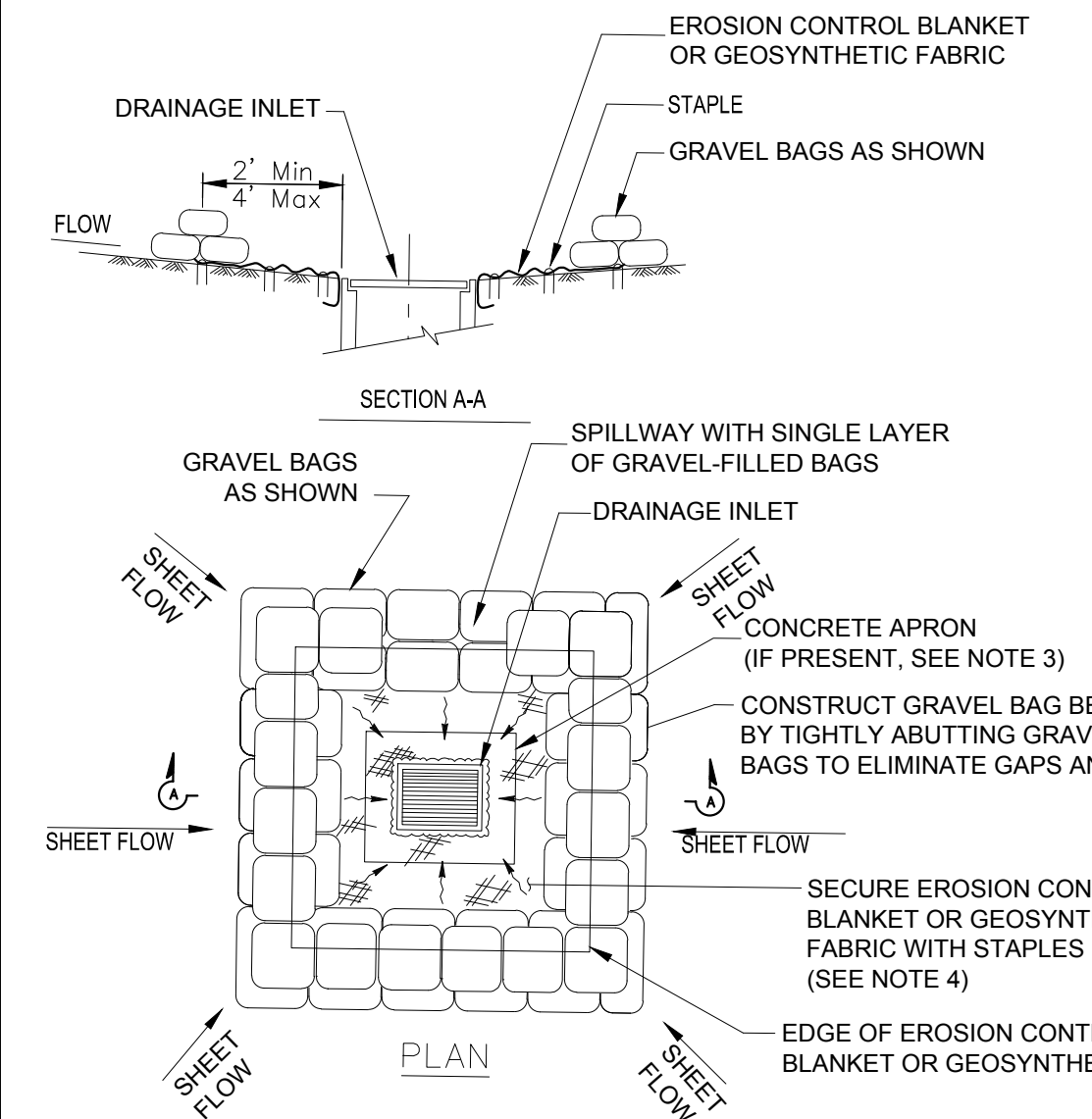
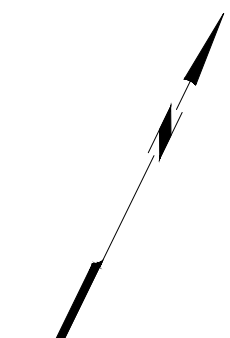
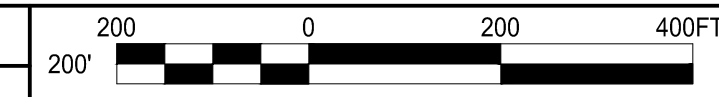
C&S Engineers, Inc.
 8950 Cal Center Drive
 Suite 112
 Sacramento, California 95826
 Phone: 916-364-1470
 www.cscos.com

PRELIMINARY
 NOT FOR
 CONSTRUCTION

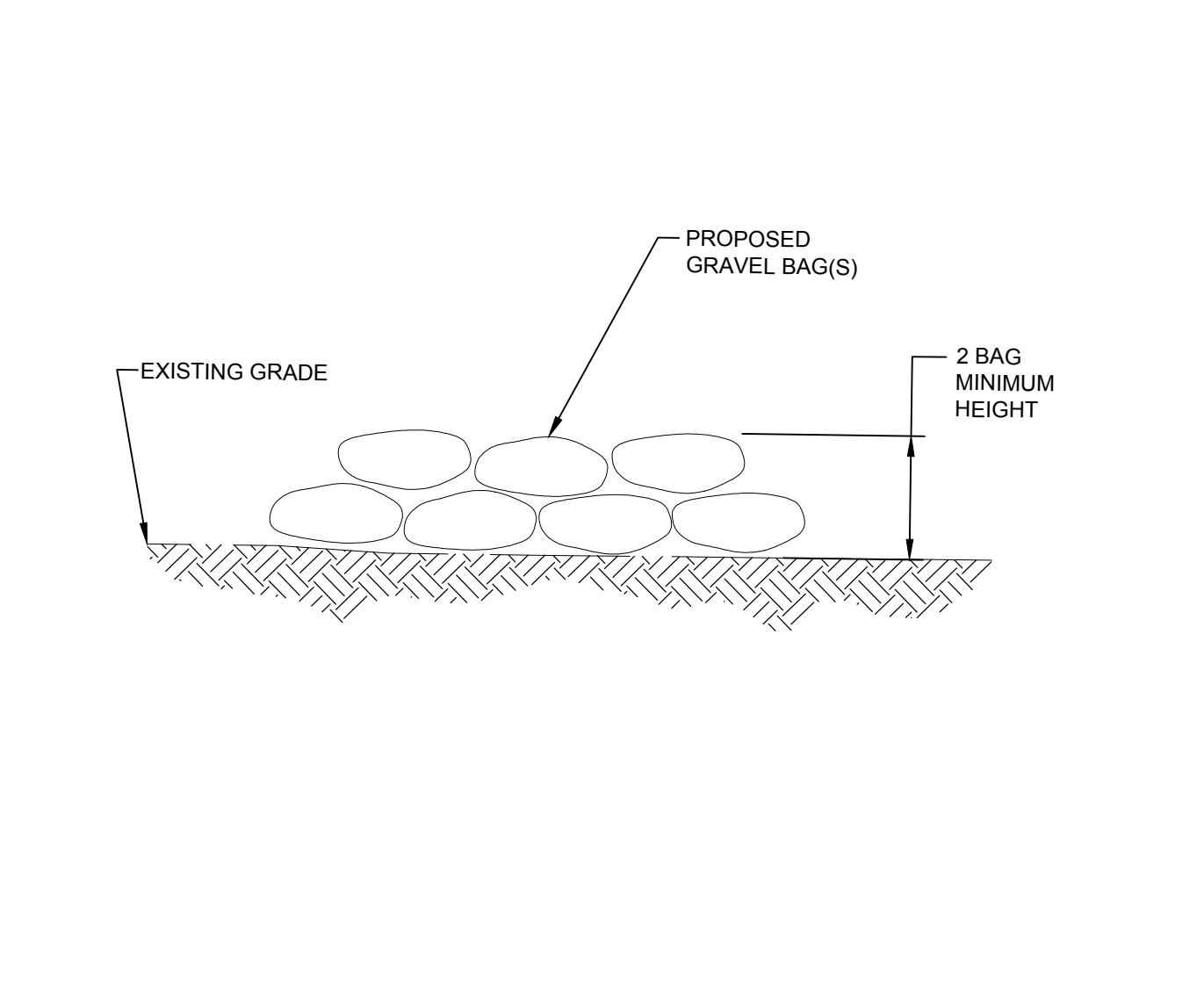
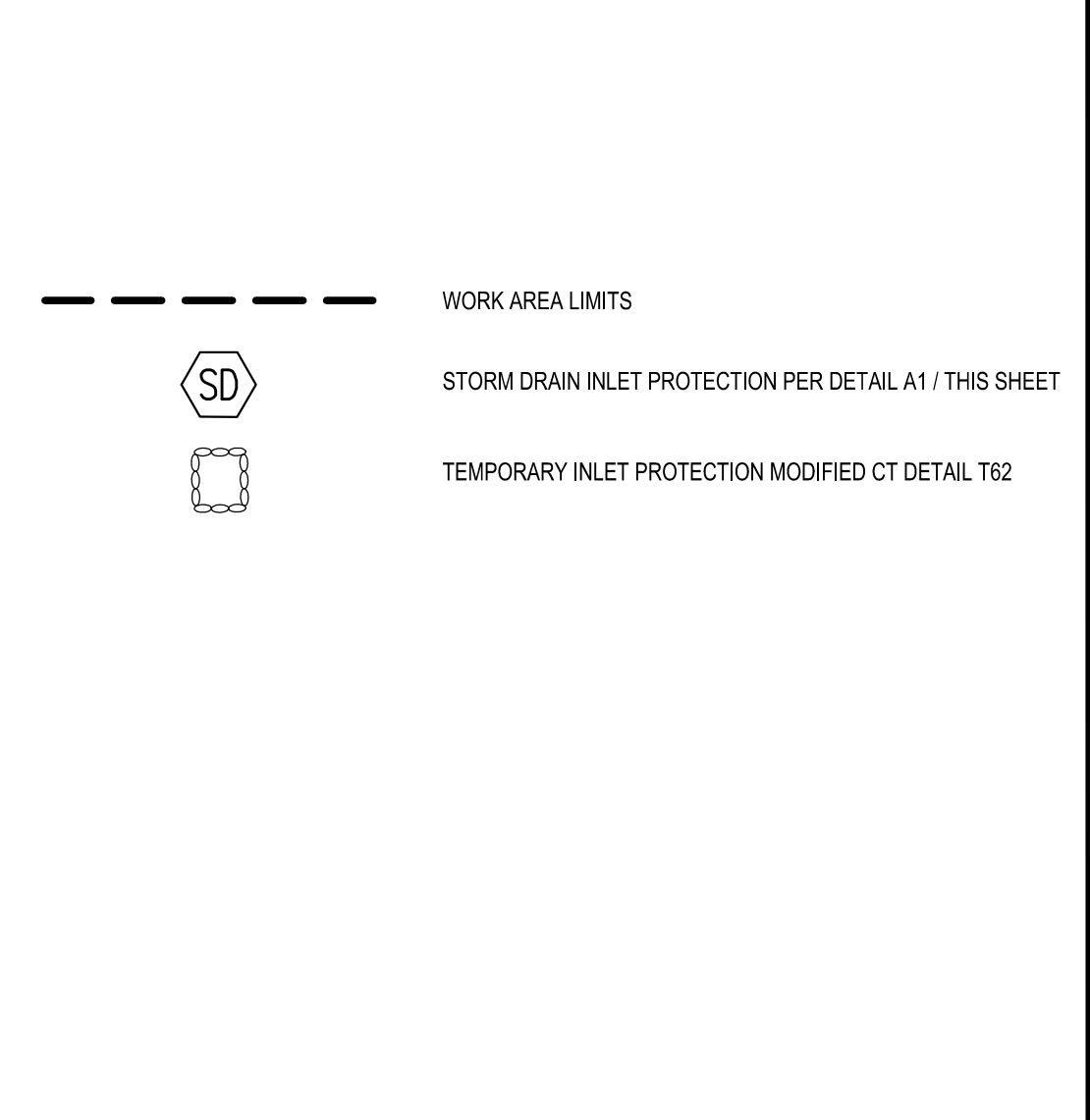


**CRACK SEAL AND REMARK RUNWAY 5-23,
 TAXIWAYS, APRONS AND TAXILANES
 PLACERVILLE AIRPORT
 EL DORADO COUNTY
 PLACERVILLE, CALIFORNIA**

B1 EROSION CONTROL PLAN
 SCALE: 1" = 200'-0"



- NOTES:**
1. PLACE LOW PROFILE BARRICADES ADJACENT TO DRAINAGE INLET PROTECTION. DIMENSIONS MAY VARY TO FIT FIELD CONDITIONS.
 2. POSITION EROSION CONTROL BLANKET OR GEOSYNTHETIC FABRIC AT EDGE OF CONCRETE APRON AND SECURE IN TRENCH. (ONLY IF CONCRETE APRON EXISTS)
 3. EROSION CONTROL BLANKET OR GEOSYNTHETIC FABRIC IS NOT REQUIRED IF THE AREA ADJACENT TO THE DRAINAGE INLET IS VEGETATED OR PAVED.
 4. SECURE EROSION CONTROL BLANKET OR GEOSYNTHETIC FABRIC WITH STAPLES (SEE NOTE 4)



- GENERAL NOTES:**
1. TEMPORARY INLET PROTECTION SHALL BE USED AT ALL INLETS ON SITE WITHIN CONSTRUCTION LIMITS, WHETHER SHOWN ON THIS PLAN OR NOT.
 2. LOCATION OF DRAINAGE INLETS SHOWN ON THIS PLAN ARE APPROXIMATE. CONTRACTOR TO FIELD VERIFY ALL EXISTING DRAINAGE INLET LOCATIONS.
 3. CONTRACTOR IS RESPONSIBLE TO REMOVE ALL TEMPORARY INLET MATERIALS FROM SITE AFTER COMPLETION OF CONSTRUCTION.

A1 TEMPORARY INLET PROTECTION MODIFIED CT DETAIL T62
 SCALE: NOT TO SCALE

A2 LEGEND
 SCALE: NOT TO SCALE

A3 GRAVEL BAG DETAIL (GB)
 SCALE: NOT TO SCALE

A4 GENERAL NOTES
 SCALE: NOT TO SCALE

MARK	DATE	DESCRIPTION
REVISIONS		
		PROJECT NO: M83.001.002
		DATE: AUGUST 2014
		DRAWN BY: NGM
		DESIGNED BY: NGM
		CHECKED BY: JLM

EROSION CONTROL PLAN

C-101

Jun 02, 2015 - 11:37am
 F:\Project\M83 - El Dorado County\M83001002 - Placerville Crack Repair Detail\Design\CADD\Sheet Files\M83.001.002_C-101_EROSION_CONTROL.dwg

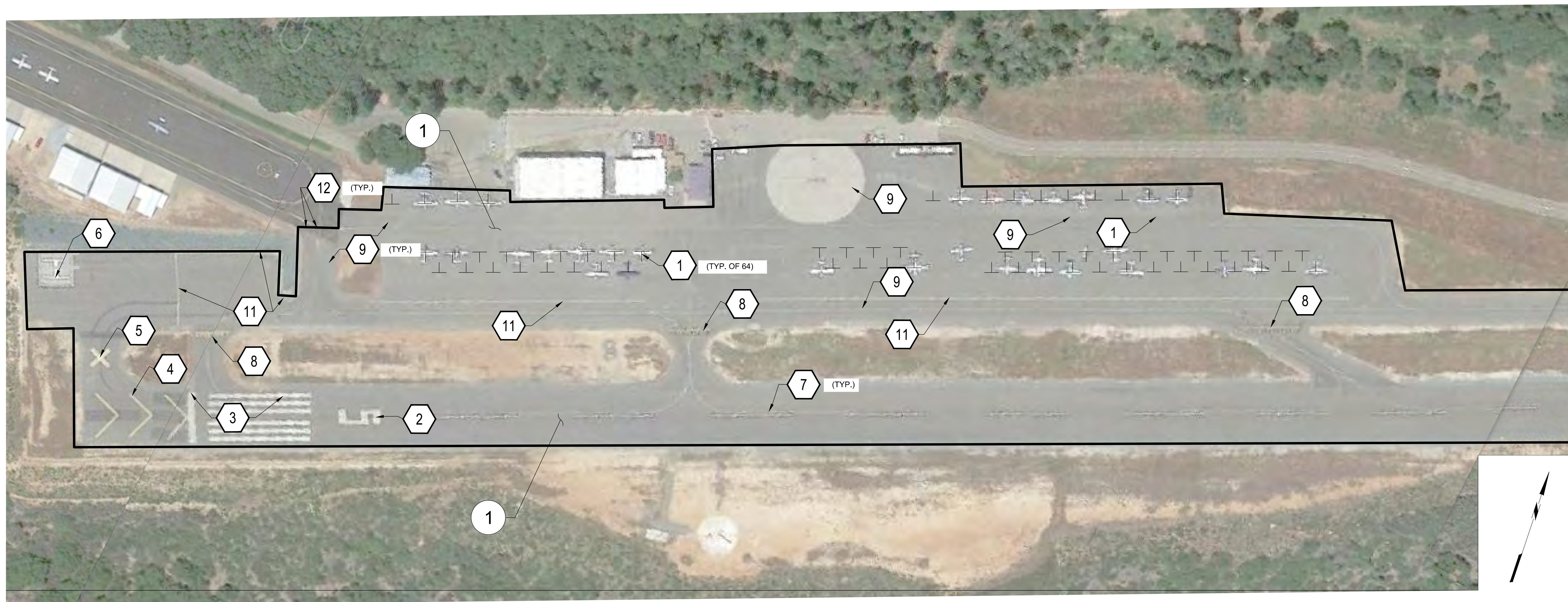


C&S Engineers, Inc.
8950 Cal Center Drive
Suite 112
Sacramento, California 95826
Phone: 916-364-1470
www.cscos.com

PRELIMINARY
NOT FOR
CONSTRUCTION

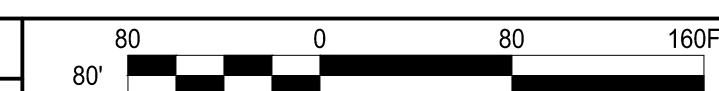


**CRACK SEAL AND REMARK RUNWAY 5-23,
TAXIWAYS, APRONS AND TAXILANES
PLACERVILLE AIRPORT
EL DORADO COUNTY
PLACERVILLE, CALIFORNIA**



MATCHLINE SEE SHEET CM-102

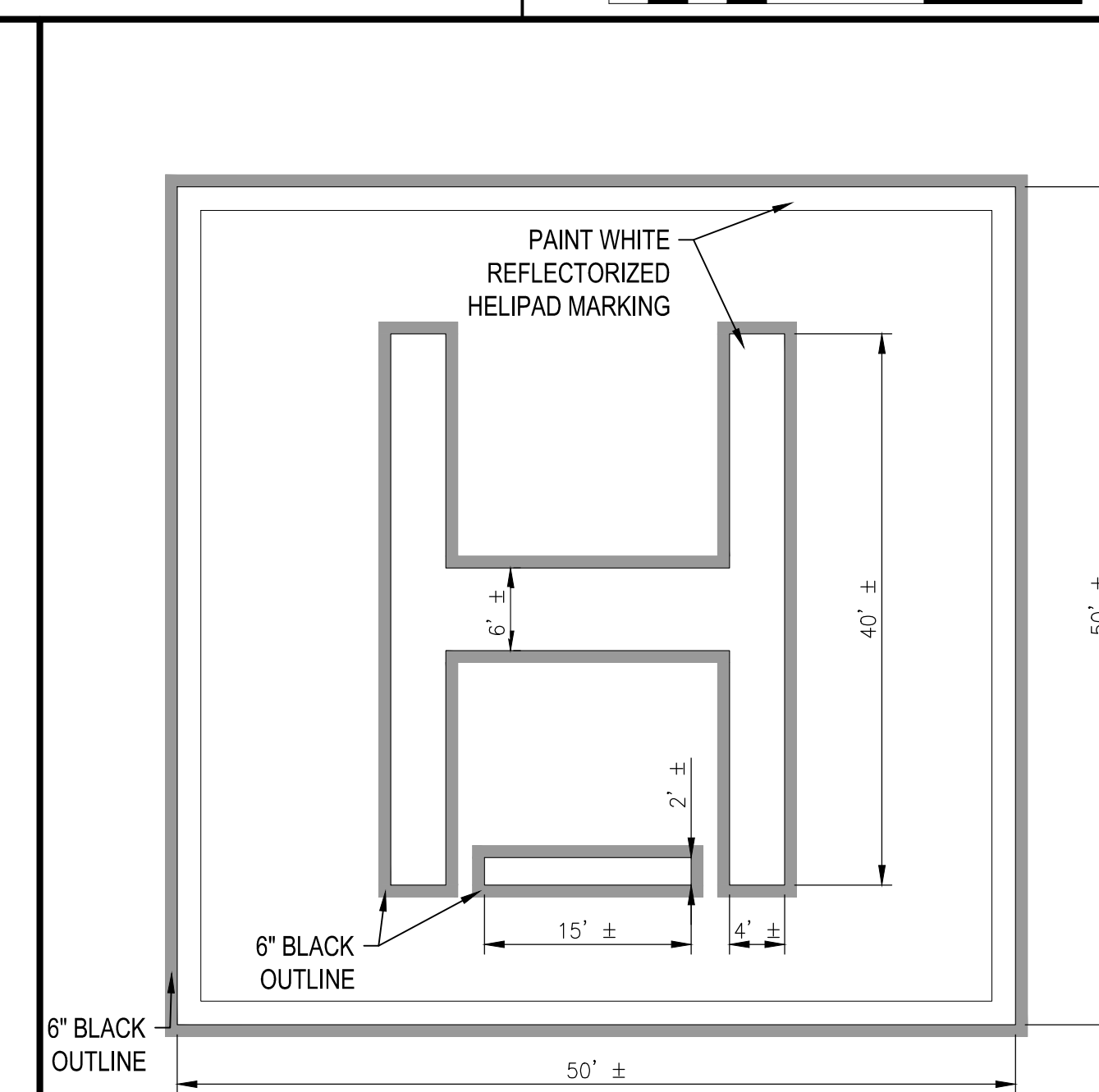
B1 CRACK SEAL AND MARKING PLAN
1" = 80'



1	PAINT YELLOW (NON-REFLECTIVE) TIE-DOWN MARKING TO MATCH EXISTING. SEE DETAIL B2/C-501.
2	PAINT WHITE REFLECTORIZED RUNWAY DESIGNATION MARKINGS TO MATCH EXISTING. CHANGE EXISTING STRIATED MARKING TO NON-STRIATED. SEE GENERAL NOTE NO. 4. SEE DETAIL C1/C-501.
3	PAINT WHITE REFLECTORIZED RUNWAY THRESHOLD MARKINGS TO MATCH EXISTING. CHANGE EXISTING STRIATED MARKING TO NON-STRIATED. SEE GENERAL NOTE NO. 4. SEE DETAIL B1/C-501.
4	PAINT YELLOW REFLECTORIZED CHEVRON MARKINGS TO MATCH EXISTING. CHANGE EXISTING STRIATED MARKING TO NON-STRIATED. SEE GENERAL NOTE NO. 4. SEE DETAIL C2/C-501.
5	PAINT YELLOW REFLECTORIZED CLOSED TAXIWAY MARKINGS TO MATCH EXISTING. CHANGE EXISTING STRIATED MARKING TO NON-STRIATED. SEE GENERAL NOTE NO. 4. SEE DETAIL A2/C-501.
6	PAINT WHITE REFLECTORIZED HELIPOINT MARKING TO MATCH EXISTING. SEE DETAIL A4 THIS SHEET.
7	PAINT 18" WHITE REFLECTORIZED CENTER LINE MARKINGS TO MATCH EXISTING. SEE DETAIL B3/C-501.
8	PAINT YELLOW REFLECTORIZED HOLD POSITION MARKINGS TO MATCH EXISTING. SEE DETAIL A1/C-501.
9	PAINT 6" YELLOW REFLECTORIZED TAXIWAY CENTERLINE MARKINGS TO MATCH EXISTING. SEE DETAIL A3/C-501.
11	PAINT YELLOW REFLECTORIZED SOLID TAXIWAY EDGE MARKINGS TO MATCH EXISTING. SEE DETAIL A4/C-501.
12	MATCH EXISTING STRIPING

1 REPAIR CRACKS 1/4" TO LESS THAN 1" AND 1" TO 2" PER DETAIL C4/C-501. REPAIR CRACKS 2" AND GREATER PER DETAIL B4/C-501. ALL CRACKS TO BE TREATED SHALL BE MARKED BY ENGINEER PRIOR TO CONSTRUCTION.

- ALL MARKINGS EXCEPT FOR TIE-DOWNS SHALL BE PAINTED OVER EXISTING MARKINGS AND NO NEW CONFIGURATION SHALL BE USED.
- MARKINGS IN THE FIELD SHALL BE PAINTED OVER WITH THE SAME CONFIGURATION, PATTERN AND COLOR AS FOUND IN THE FIELD BY THE CONTRACTOR. IF THERE IS A CONFLICT BETWEEN THE STANDARDS SHOWN IN SHEET C-501 OF THESE PLANS AND MARKINGS FOUND ON SITE, NOTIFY THE ENGINEER.
- MATCH EXISTING MARKINGS AT ALL PROJECT LIMITS, EXCEPT FOR STRIATED MARKINGS. SEE GENERAL NOTE No. 4.
- CHANGE EXISTING STRIATED MARKINGS TO NON-STRIATED. CONTRACTORS FIRST ORDER OF WORK ON EXISTING STRIATED MARKINGS IS TO PAINT THE NON-PAINTED AREA WITH ONE COAT OF WHITE PAINT, WITH NO BEADS. WHEN FINISHED, PAINT ENTIRE MARKING WITH A FINAL FINISH COAT OF DESIGNATED COLOR WITH BEADS.



A1 MARKING NOTES
NOT TO SCALE

A2 CRACK SEAL NOTES
NOT TO SCALE

A3 GENERAL NOTES
NOT TO SCALE

A4 HELIPAD MARKING DETAIL
NOT TO SCALE

Jun 02, 2015 - 11:38am F:\Project\M83 - El Dorado County\M83001002 - Placerville Crack Repair Detail\Design\CADD\Sheet Files\M83.001.002_CM-101_MARKING_PLAN.dwg

MARK	DATE	DESCRIPTION
REVISIONS		
PROJECT NO: M83.001.002		
DATE: AUGUST 2014		
DRAWN BY: NGM		
DESIGNED BY: NGM		
CHECKED BY: JLM		

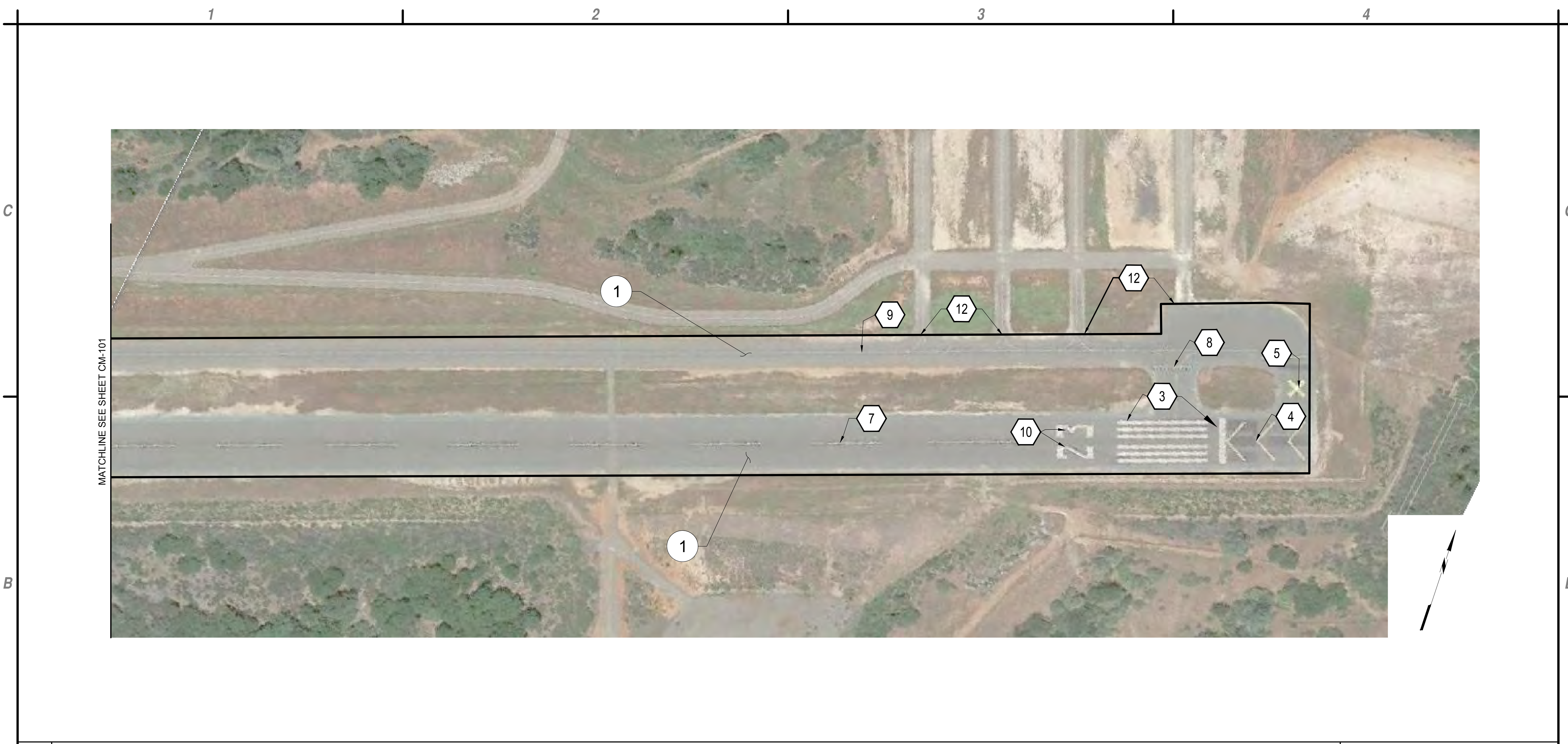
CRACK SEAL AND MARKING PLAN

CM -101

PRELIMINARY
 NOT FOR
 CONSTRUCTION



**CRACK SEAL AND REMARK RUNWAY 5-23,
 TAXIWAYS, APRONS AND TAXILANES
 PLACERVILLE AIRPORT
 EL DORADO COUNTY
 PLACERVILLE, CALIFORNIA**

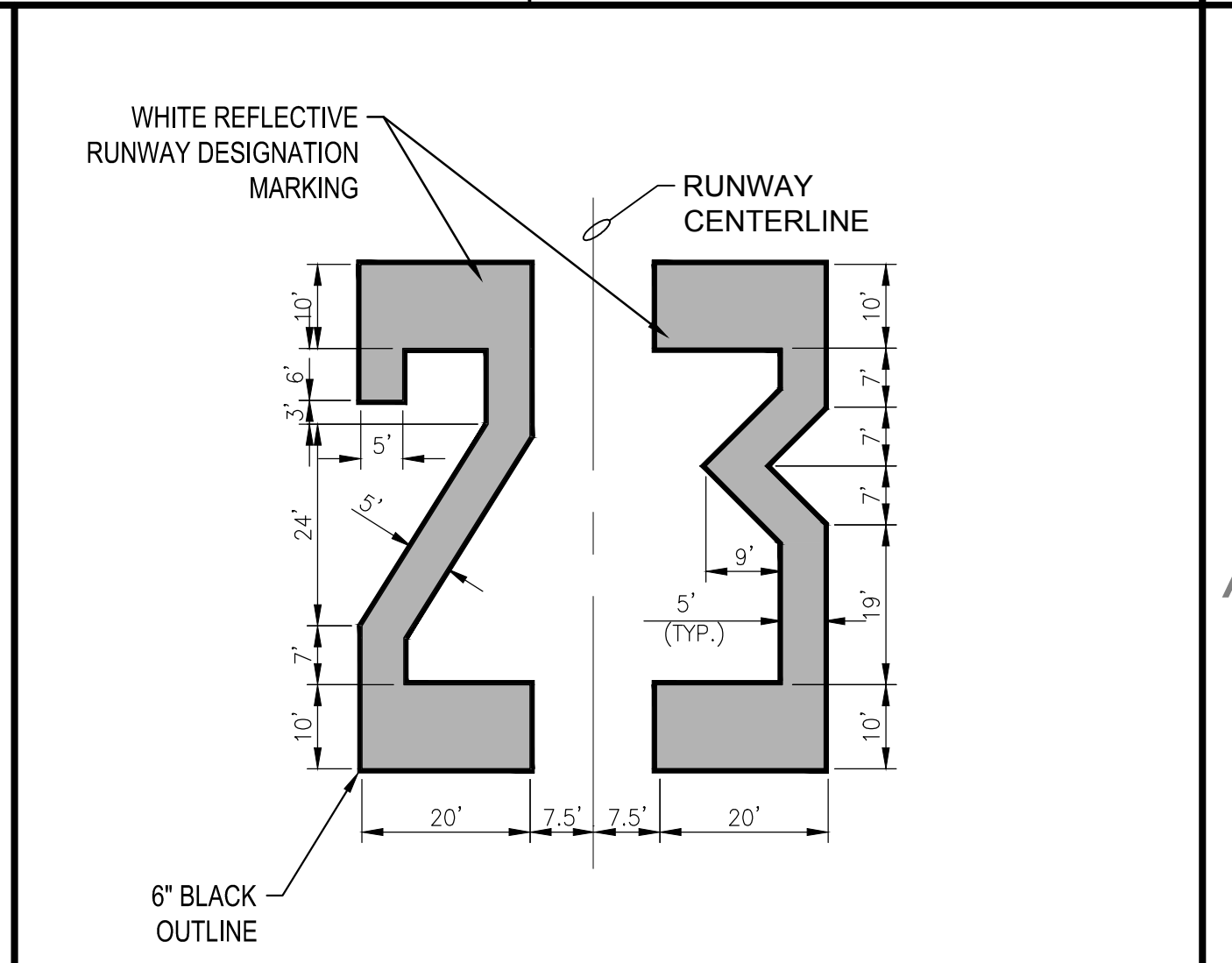


B1 CRACK SEAL AND MARKING PLAN
 1" = 80'

3	PAINT WHITE REFLECTORIZED RUNWAY THRESHOLD MARKINGS TO MATCH EXISTING. CHANGE EXISTING STRIATED MARKING TO NON-STRIATED. SEE GENERAL NOTE NO. 4. SEE DETAIL B1/C-501.
4	PAINT YELLOW REFLECTORIZED CHEVRON MARKINGS TO MATCH EXISTING. CHANGE EXISTING STRIATED MARKING TO NON-STRIATED. SEE GENERAL NOTE NO. 4. SEE DETAIL C2/C-501.
5	PAINT YELLOW REFLECTORIZED CLOSED TAXIWAY MARKINGS TO MATCH EXISTING. CHANGE EXISTING STRIATED MARKING TO NON-STRIATED. SEE GENERAL NOTE NO. 4. SEE DETAIL A2/C-501.
7	PAINT 18" WHITE REFLECTORIZED CENTER LINE MARKINGS TO MATCH EXISTING. SEE DETAIL B3/C-501.
8	PAINT YELLOW REFLECTORIZED HOLD POSITION MARKINGS TO MATCH EXISTING. SEE DETAIL A1/C-501.
9	PAINT 6" YELLOW REFLECTORIZED TAXIWAY CENTERLINE MARKINGS TO MATCH EXISTING. SEE DETAIL A3/C-501.
10	PAINT WHITE REFLECTORIZED RUNWAY DESIGNATION MARKINGS TO MATCH EXISTING. CHANGE EXISTING STRIATED MARKING TO NON-STRIATED. SEE GENERAL NOTE NO. 4. SEE DETAIL A4 THIS SHEET.
12	MATCH EXISTING STRIPING

1 REPAIR CRACKS 1/4" TO LESS THAN 1" AND 1" TO 2" PER DETAIL C4/C-501. REPAIR CRACKS 2" AND GREATER PER DETAIL B4/C-501. ALL CRACKS TO BE TREATED SHALL BE MARKED BY ENGINEER PRIOR TO CONSTRUCTION.

- ALL MARKINGS EXCEPT FOR TIE-DOWNS SHALL BE PAINTED OVER EXISTING MARKINGS AND NO NEW CONFIGURATION SHALL BE USED.
- MARKINGS IN THE FIELD SHALL BE PAINTED OVER WITH THE SAME CONFIGURATION, PATTERN AND COLOR AS FOUND IN THE FIELD BY THE CONTRACTOR. IF THERE IS A CONFLICT BETWEEN THE STANDARDS SHOWN IN SHEET C-501 OF THESE PLANS AND MARKINGS FOUND ON SITE, NOTIFY THE ENGINEER.
- MATCH EXISTING MARKINGS AT ALL PROJECT LIMITS, EXCEPT FOR STRIATED MARKINGS. SEE GENERAL NOTE NO. 4.
- CHANGE EXISTING STRIATED MARKINGS TO NON-STRIATED. CONTRACTORS FIRST ORDER OF WORK ON EXISTING STRIATED MARKINGS IS TO PAINT THE NON-PAINTED AREA WITH ONE COAT OF WHITE PAINT, WITH NO BEADS. WHEN FINISHED, PAINT ENTIRE MARKING WITH A FINAL FINISH COAT OF DESIGNATED COLOR WITH BEADS.



A1 MARKING NOTES
 NOT TO SCALE

A2 CRACK SEAL NOTES
 NOT TO SCALE

A3 GENERAL NOTES
 NOT TO SCALE

A4 RUNWAY DESIGNATION MARKINGS
 NOT TO SCALE

Jun 02, 2015 - 11:42am
 F:\Project\M83 - El Dorado County\M83001002 - Placerville Airport Crack Repair Detail\Design\CADD\Sheet Files\M83.001.002_CM-102_MARKING_PLAN.dwg

MARK	DATE	DESCRIPTION
REVISIONS		
		PROJECT NO: M83.001.002
		DATE: AUGUST 2014
		DRAWN BY: NGM
		DESIGNED BY: NGM
		CHECKED BY: JLM

CRACK SEAL AND MARKING PLAN

CM-102

