



COMMUNITY DEVELOPMENT AGENCY

DEVELOPMENT SERVICES DIVISION

<http://www.edcgov.us/DevServices/>

PLACERVILLE OFFICE:

2850 Fairlane Court, Placerville, CA 95667

BUILDING

(530) 621-5315 / (530) 622-1708 Fax

bldgdept@edcgov.us

PLANNING

(530) 621-5355 / (530) 642-0508 Fax

planning@edcgov.us

LAKE TAHOE OFFICE:

3368 Lake Tahoe Blvd., Suite 302

South Lake Tahoe, CA 96150

(530) 573-3330

(530) 542-9082 Fax

tahoebuild@edcgov.us

TO: Planning Commission Agenda of: October 13, 2016

FROM: Jennifer Franich, Development Services

DATE: October 12, 2016

RE: **S15-0013/Outingdale Verizon Wireless; New/Revised Exhibits**

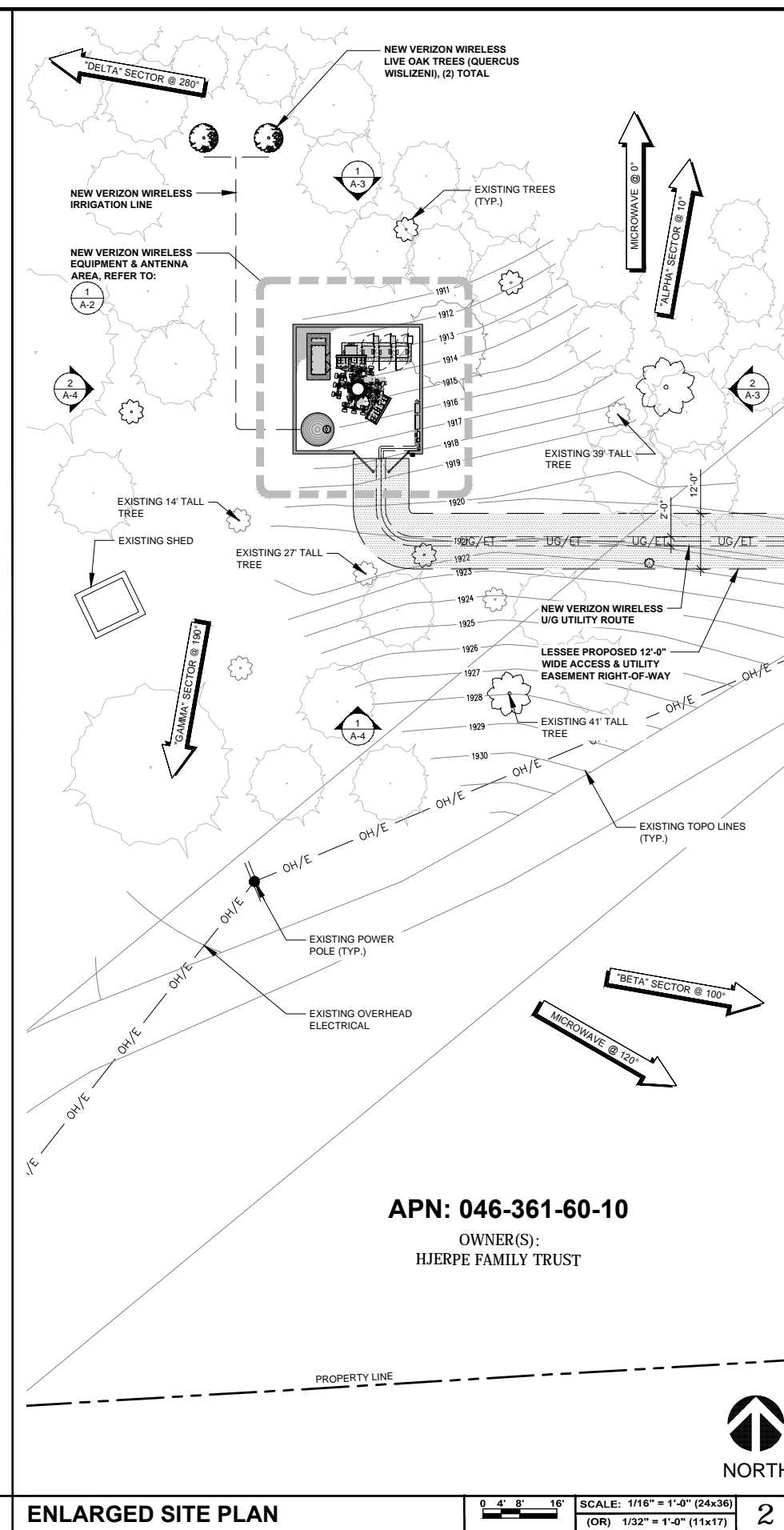
Based on public comments at the Planning Commission hearing on September 8, 2016 and subsequent direction of the Commission on that date, the applicant has submitted revised plans (Exhibits E-1 and E-3 through E-7) and additional photosimulations (Exhibit F) that demonstrate the following:

1. The addition of a 1,500 gallon water tank with irrigation line extending north to the two proposed new oak trees.
2. Replacement of the chain link fence with an eight-foot Concrete Masonry Unit (CMU) block wall.
3. Noted location of two new interior live oak trees.

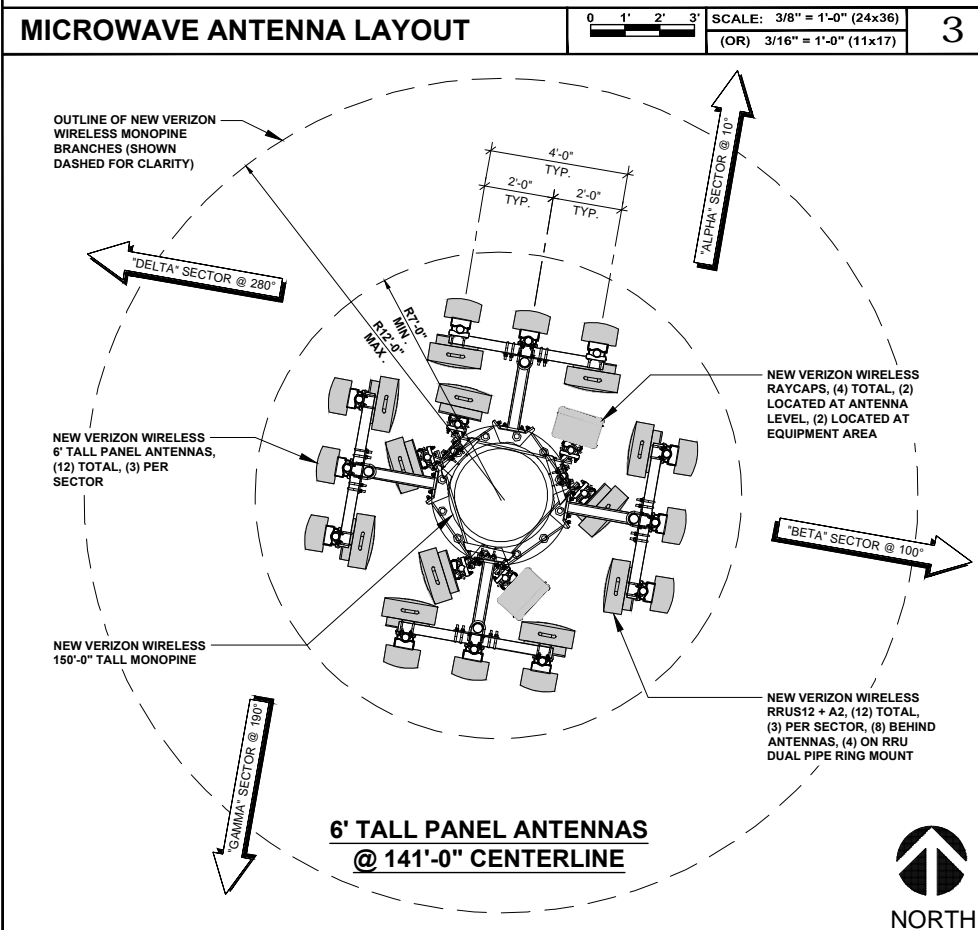
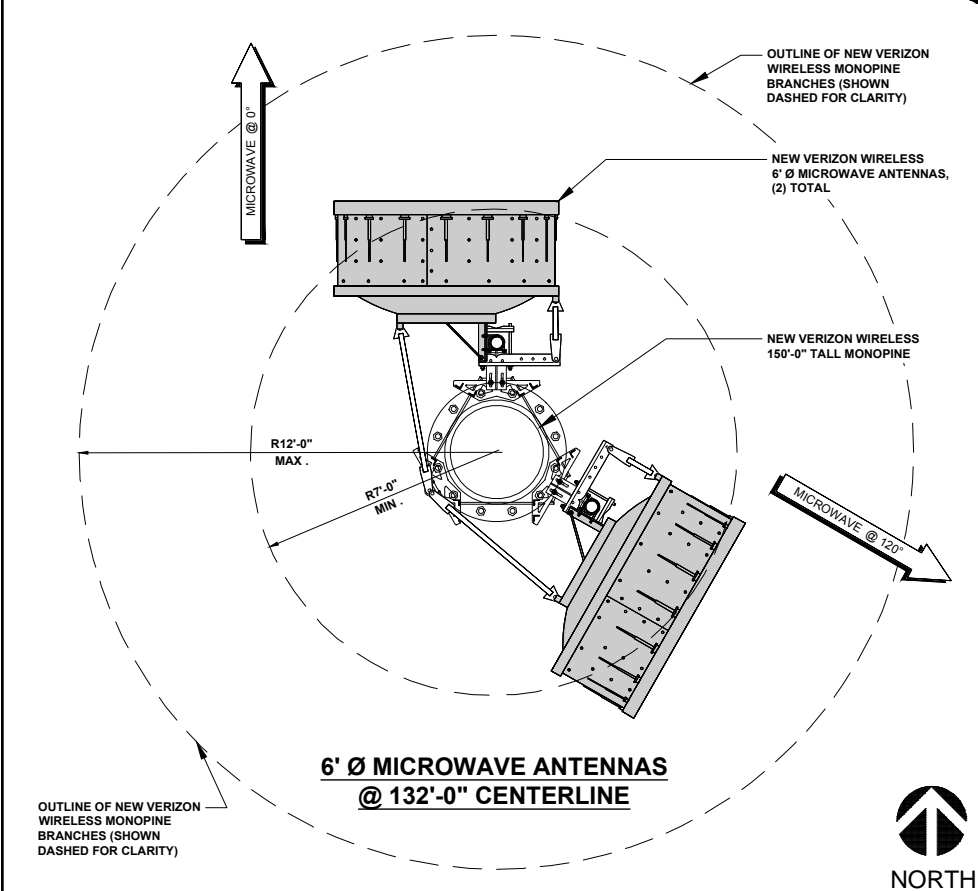
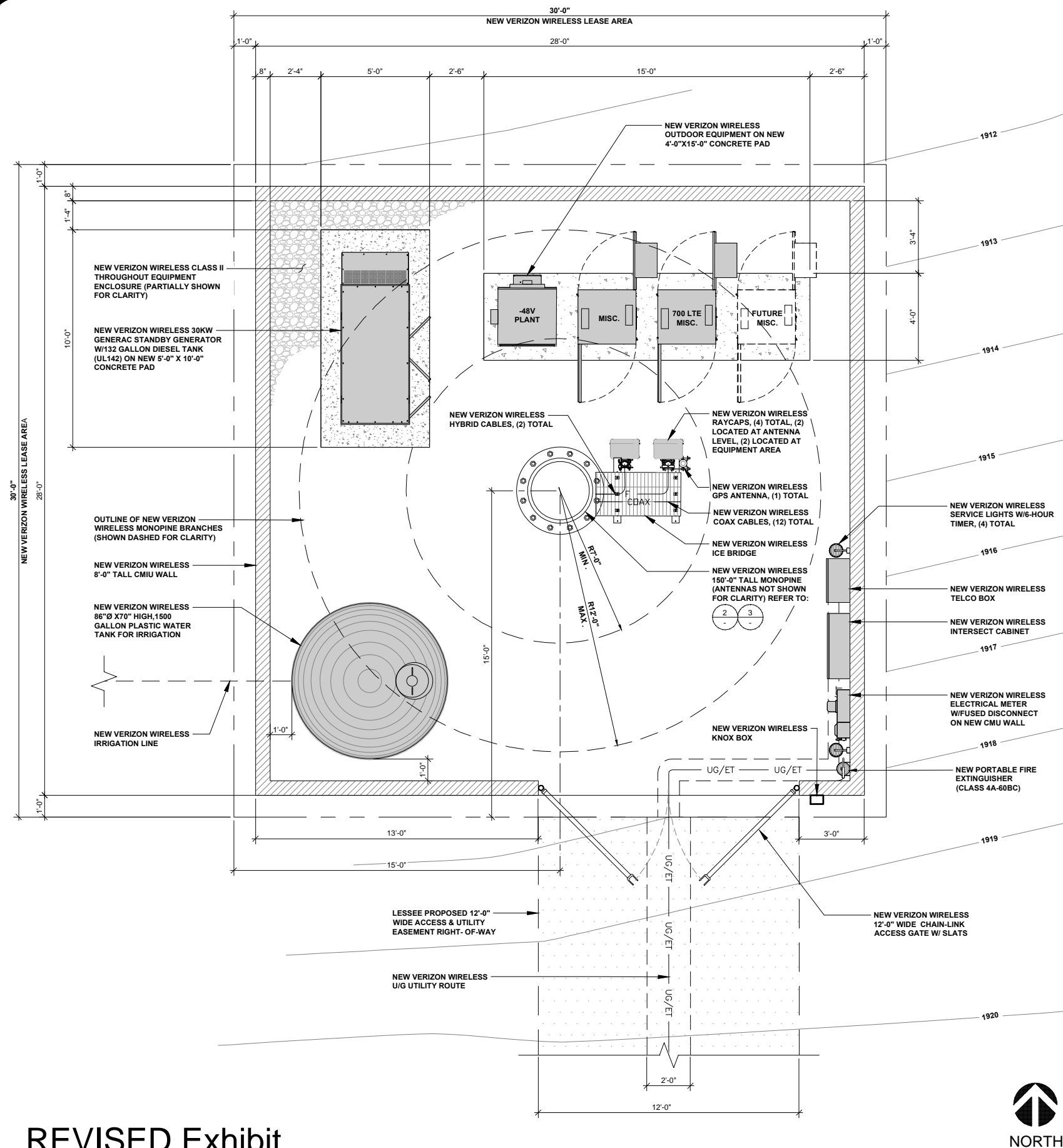
The agent has also submitted an airspace analysis for compliance with Federal Airways and Airspace regulations which indicates that there would be no need for a light on top of the tower. This is to be added as a new exhibit, Exhibit K. The revised exhibits replace previously submitted items and these, along with the new exhibit, do not necessitate changes to any Conditions of Approval or Findings.

Attachments:

REVISED Exhibit E-1Title Sheet, Sheet T-1
REVISED Exhibit E-3Enlarged Site Plan, Sheet A-1
REVISED Exhibit E-4Equipment and Antenna Layouts, Sheet A-2
REVISED Exhibit E-5North and East Elevations, Sheet A-3
REVISED Exhibit E-6South and West Elevations, Sheet A-4
REVISED Exhibit E-7Equipment Elevations, Sheet A-5
REVISED Exhibit F.....Photo Simulations
NEW Exhibit K.....Airspace Analysis Summary Report



A-1



ISSUE STATUS

REV.	DATE	DESCRIPTION	BY
0	04/13/15	90% ZONING	FA
1	05/06/15	100% ZONING	FA
2	06/22/15	100% ZONING	NG
3	07/14/15	100% ZONING	NG
4	10/06/16	100% ZONING	FA



SAC AE DESIGN GROUP, INC.
5015 SHOREHAM PLACE, STE. 150
SAN DIEGO, CA 92122
www.sacw.com
619.736.3766

PROPRIETARY INFORMATION

THE INFORMATION CONTAINED IN THIS SET OF
DRAWINGS IS PROPRIETARY & CONFIDENTIAL TO
VERIZON WIRELESS

ANY USE OR DISCLOSURE OTHER THAN AS IT RELATES
TO VERIZON WIRELESS IS STRICTLY PROHIBITED



2785 MITCHELL DRIVE, BLDG 9
WALNUT CREEK, CA 94598

W

OUTINGDALE

PSL # 295537

4260 RANCHO MONTES DRIVE
PLACERVILLE, CA 95667

PLACERVILLE, CA 95667

SHEET TITLE:

EQUIPMENT &
ANTENNA LAYOUTS

A-2

0 2' 4' 8'

SCALE: 1/8" = 1'-0" (24x36)
(OR) 1/16" = 1'-0" (11x17)

1



0 2' 4' 8'

SCALE: 1/8" = 1'-0" (24x36)

(OR) 1/16" = 1'-0" (11x17)

2

2783 MITCHELL DRIVE, BEDD
WALNUT CREEK, CA 94598

OUTINGDALE
PSL # 295537
4260 RANCHO MONTES DRIVE
PLACERVILLE, CA 95667

SHEET TITLE:
NORTH & EAST
ELEVATIONS

A-3

NOTE: THE ORIGINAL SIZE OF THIS PLAN IS 24" x 36". SCALE SHOWN IS NOT VALID FOR REDUCED OR ENLARGED SHEET SIZES.

- TOP OF NEW VERIZON WIRELESS MONOPINE BRANCHES
ELEV. 150'-0" AGL
- ELEV. TOP OF NEW VERIZON WIRELESS MONOPINE STRUCTURE
ELEV. 145'-0" AGL
- CENTERLINE OF NEW VERIZON WIRELESS PANEL ANTENNAS
ELEV. 141'-0" AGL
- CENTERLINE OF NEW VERIZON WIRELESS MICROWAVE ANTENNAS
ELEV. 132'-0" AGL

- NEW VERIZON WIRELESS RRUS12 + A2,
(12) TOTAL, (3) PER SECTOR, (8) BEHIND
ANTENNAS, (4) ON RRU DUAL PIPE RING
MOUNT
- NEW VERIZON WIRELESS 6' TALL
ANTENNAS, (12) TOTAL, (3) PER
SECTOR
- NEW VERIZON WIRELESS RAYCAPS, (4)
TOTAL, (2) LOCATED AT ANTENNA LEVEL,
(2) LOCATED AT EQUIPMENT AREA
- NEW VERIZON WIRELESS 6' Ø
MICROWAVE ANTENNAS, (2) TOTAL

NOTE:
PAINT ALL NEW VERIZON WIRELESS
EQUIPMENT TO MATCH MONOPINE

- BOTTOM OF NEW VERIZON WIRELESS MONOPINE BRANCHES
ELEV. 20'-0" AGL
- GROUND LEVEL
ELEV. 0'-0" AGL
AGL 0'-0" = 1919' AMSL

NEW VERIZON WIRELESS
8'-0" TALL CMU WALL

NEW VERIZON WIRELESS
12'-0" WIDE CHAIN-LINK
ACCESS GATE W/ SLATS

NEW VERIZON WIRELESS
KNOX BOX

0 2' 4' 8'

SCALE: 1/8" = 1'-0" (24x36)
(OR) 1/16" = 1'-0" (11x17)

1

- TOP OF NEW VERIZON WIRELESS MONOPINE BRANCHES
ELEV. 150'-0" AGL
- ELEV. TOP OF NEW VERIZON WIRELESS MONOPINE STRUCTURE
ELEV. 145'-0" AGL
- CENTERLINE OF NEW VERIZON WIRELESS PANEL ANTENNAS
ELEV. 141'-0" AGL
- CENTERLINE OF NEW VERIZON WIRELESS MICROWAVE ANTENNAS
ELEV. 132'-0" AGL

- NEW VERIZON WIRELESS RRUS12 + A2,
(12) TOTAL, (3) PER SECTOR, (8) BEHIND
ANTENNAS, (4) ON RRU DUAL PIPE RING
MOUNT
- NEW VERIZON WIRELESS 6' TALL
ANTENNAS, (12) TOTAL, (3) PER
SECTOR
- NEW VERIZON WIRELESS 6' Ø
MICROWAVE ANTENNAS, (2) TOTAL

- BOTTOM OF NEW VERIZON WIRELESS MONOPINE BRANCHES
ELEV. 20'-0" AGL
- GROUND LEVEL
ELEV. 0'-0" AGL
AGL 0'-0" = 1919' AMSL

NEW VERIZON WIRELESS
8'-0" TALL CMU WALL

NEW VERIZON WIRELESS
CMU RETAINING WALL

0 2' 4' 8'

SCALE: 1/8" = 1'-0" (24x36)
(OR) 1/16" = 1'-0" (11x17)

2

SOUTH ELEVATION

WEST ELEVATION

REVISED Exhibit

ISSUE STATUS

REV.	DATE	DESCRIPTION	BY
0	04/13/15	90% ZONING	FA
1	05/06/15	100% ZONING	FA
2	06/22/15	100% ZONING	NG
3	07/14/15	100% ZONING	NG
4	10/06/16	100% ZONING	FA



SAC AE DESIGN GROUP, INC.
5015 SHOREHAM PLACE, STE. 150
SAN DIEGO, CA 92122
www.sacw.com
619.736.3766

PROPRIETARY INFORMATION

THE INFORMATION CONTAINED IN THIS SET OF
DRAWINGS IS PROPRIETARY & CONFIDENTIAL TO
VERIZON WIRELESS
ANY USE OR DISCLOSURE OTHER THAN AS IT RELATES
TO VERIZON WIRELESS IS STRICTLY PROHIBITED

verizon

2785 MITCHELL DRIVE, BLDG 9
WALNUT CREEK, CA 94598

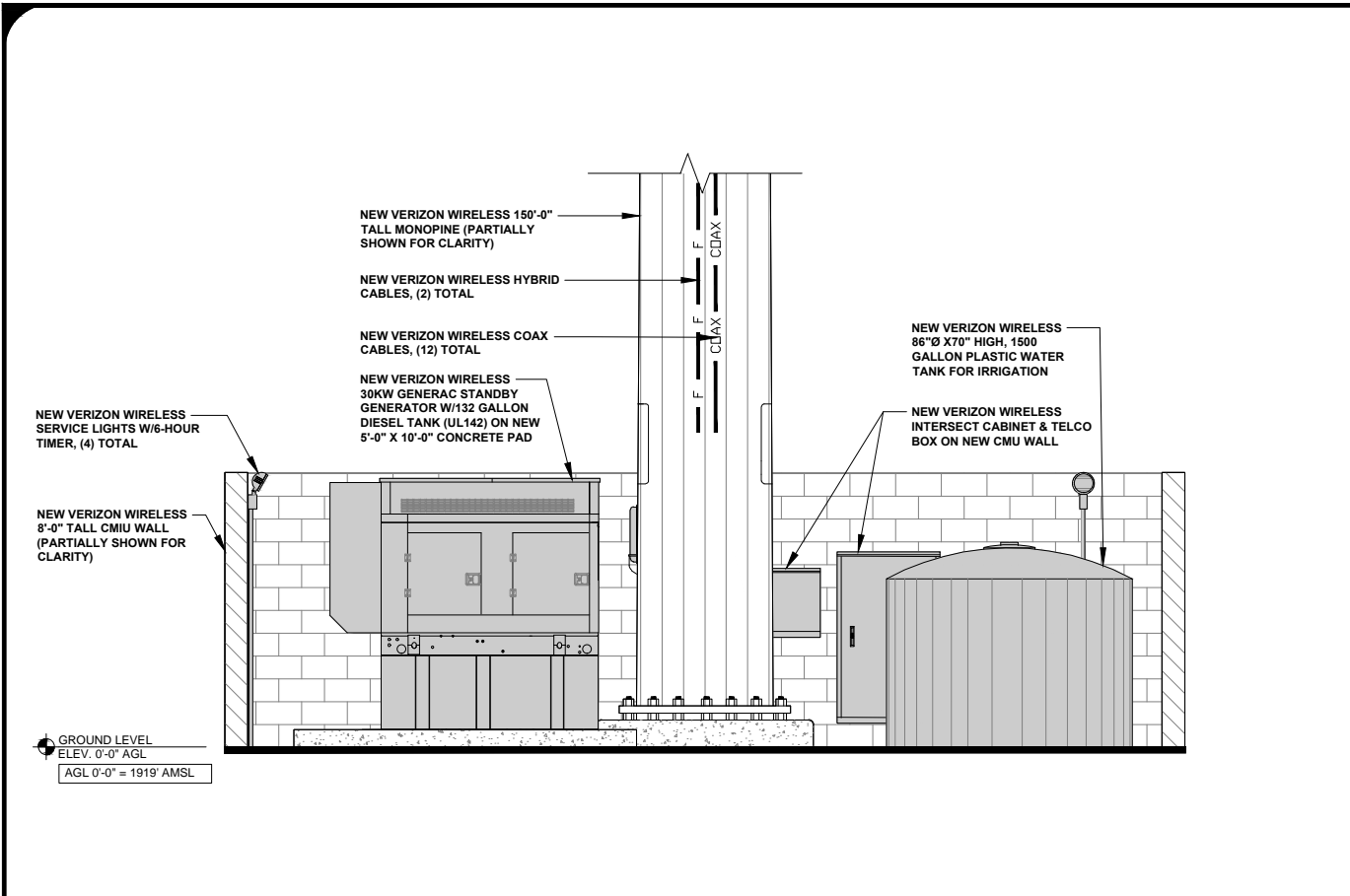
OUTINGDALE

PSL # 295537

4260 RANCHO MONTES DRIVE
PLACERVILLE, CA 95667

SHEET TITLE:
SOUTH & WEST
ELEVATIONS

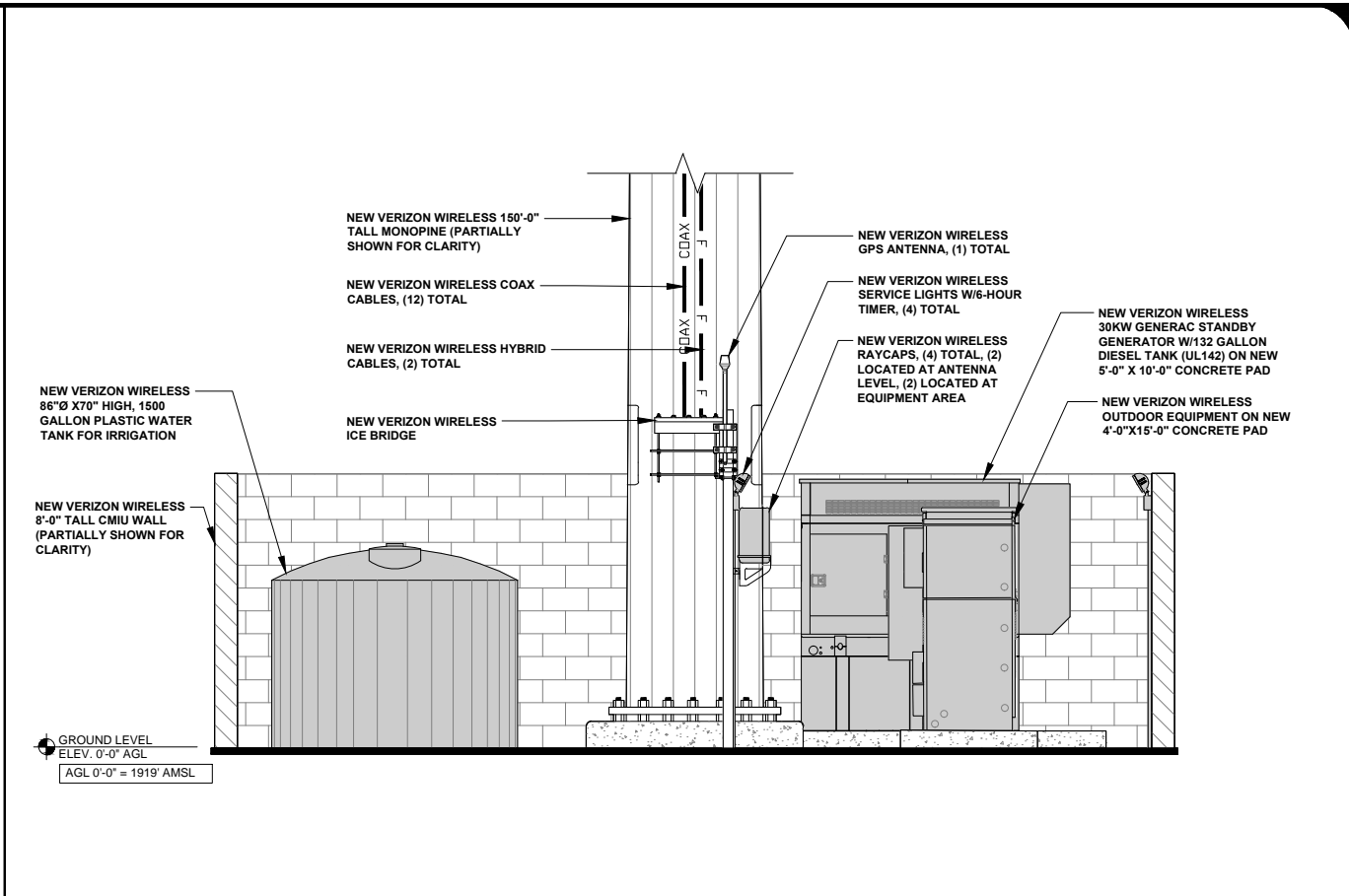
A-4



WEST EQUIPMENT ELEVATION

0 1' 2' 3' SCALE: 3/8" = 1'-0" (24x36)
(OR) 3/16" = 1'-0" (11x17)

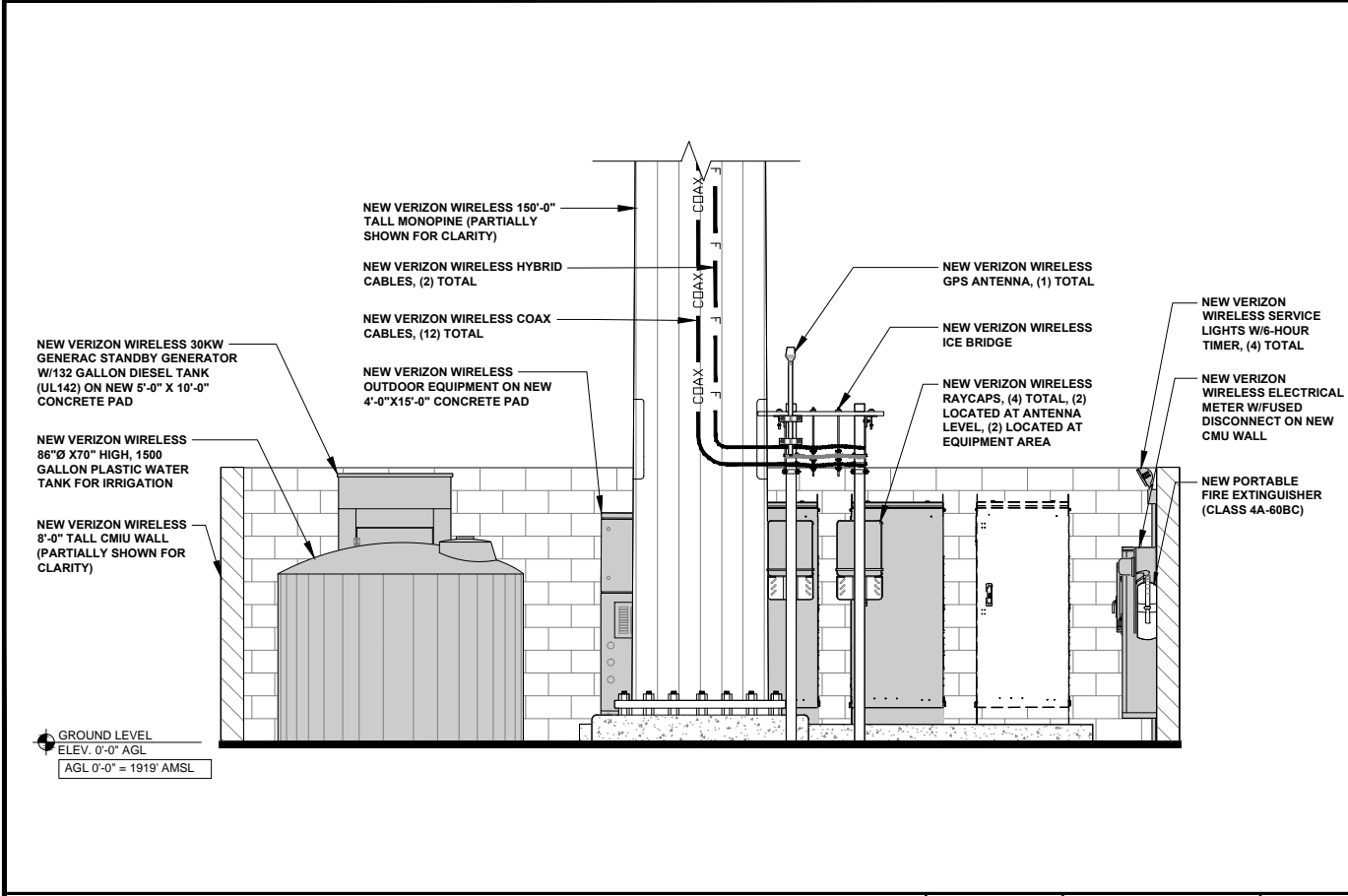
4



EAST EQUIPMENT ELEVATION

0 1' 2' 3' SCALE: 3/8" = 1'-0" (24x36)
(OR) 3/16" = 1'-0" (11x17)

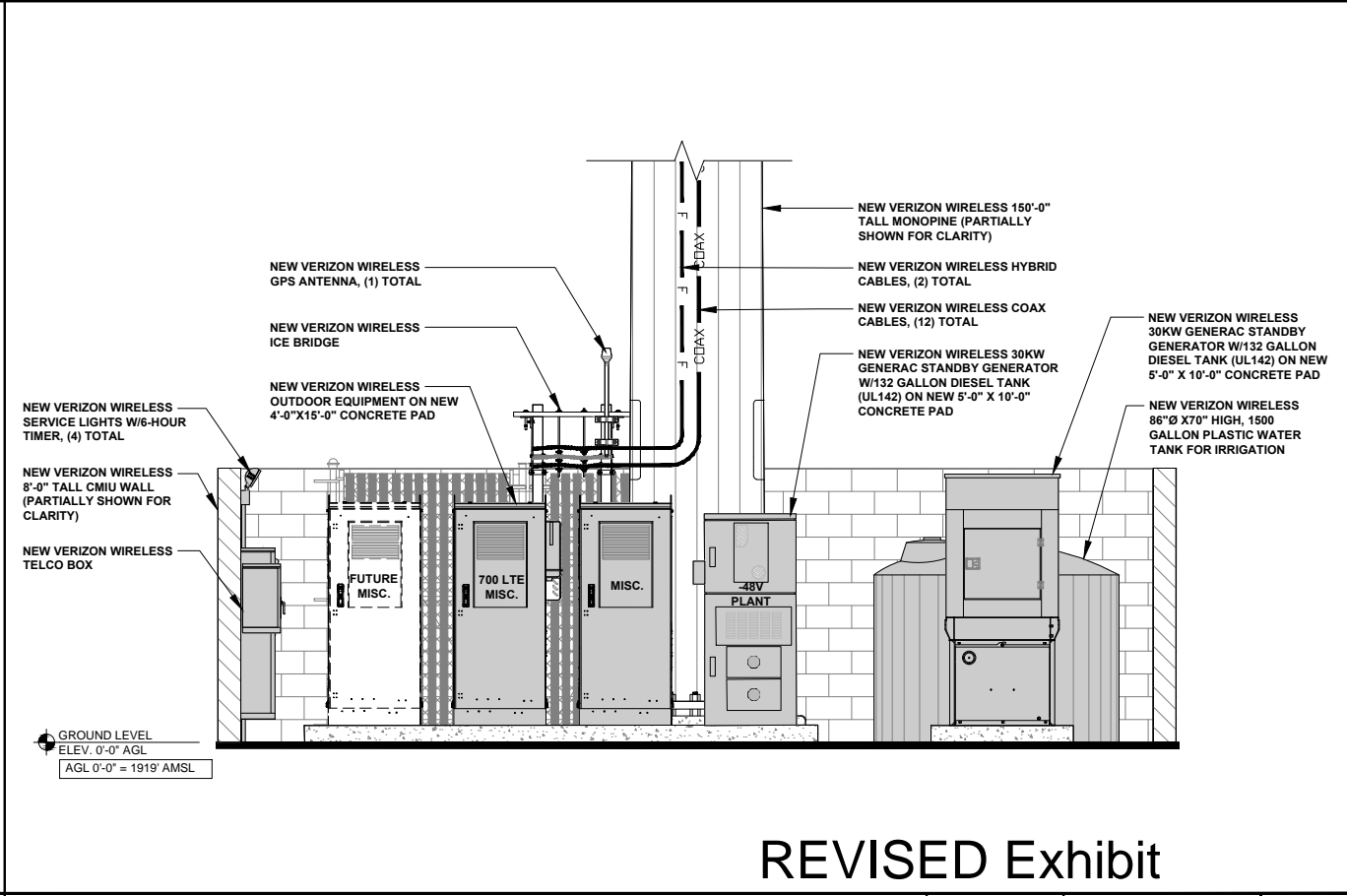
2



SOUTH EQUIPMENT ELEVATION

0 1' 2' 3' SCALE: 3/8" = 1'-0" (24x36)
(OR) 3/16" = 1'-0" (11x17)

3



NORTH EQUIPMENT ELEVATION

0 3' 6" 1' SCALE: 3/4" = 1'-0" (24x36)
(OR) 3/8" = 1'-0" (11x17)

1

REVISED Exhibit

ISSUE STATUS

REV.	DATE	DESCRIPTION	BY
0	04/13/15	90% ZONING	FA
1	05/06/15	100% ZONING	FA
2	06/22/15	100% ZONING	NG
3	07/14/15	100% ZONING	NG
4	10/06/16	100% ZONING	FA



SAC AE DESIGN GROUP, INC.
5015 SHOREHAM PLACE, STE. 150
SAN DIEGO, CA 92122
www.sacw.com
619.736.3766

PROPRIETARY INFORMATION

THE INFORMATION CONTAINED IN THIS SET OF DRAWINGS IS PROPRIETARY & CONFIDENTIAL TO VERIZON WIRELESS
ANY USE OR DISCLOSURE OTHER THAN AS IT RELATES TO VERIZON WIRELESS IS STRICTLY PROHIBITED



2785 MITCHELL DRIVE, BLDG 9
WALNUT CREEK, CA 94598

OUTINGDALE

PSL # 295537

4260 RANCHO MONTES DRIVE
PLACERVILLE, CA 95667

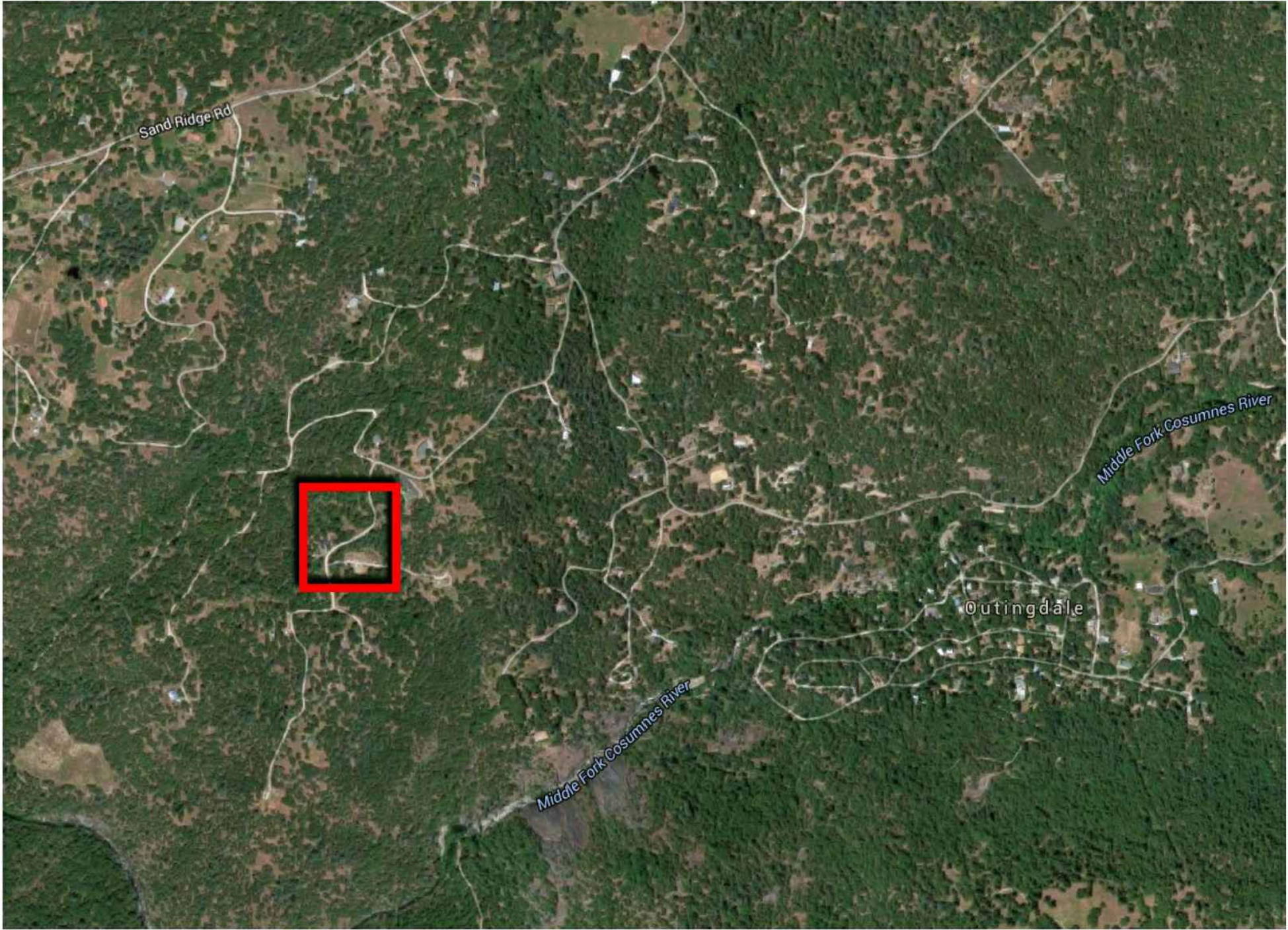
SHEET TITLE:
EQUIPMENT
ELEVATIONS

A-5

VICINITY MAP
PHOTOSIMULATION
VIEWPOINTS



OUTINGDALE
PSL # 295537
4260 RANCHO MONTES DRIVE
PLACERVILLE, CA 95667



DISCLAIMER:

THIS PHOTOSIMULATION IS INTENDED AS A GRAPHICAL REPRESENTATION OF EXISTING AND PROPOSED SITE CONDITIONS BASED ON THE PROJECT / DRAWING PLANS. IT IS NOT INTENDED FOR CONSTRUCTION. ACTUAL, FINAL CONSTRUCTION MAY VARY

REVISED Exhibit F



PHOTOSIMULATION
VIEW 1



OUTINGDALE
PSL # 295537
4260 RANCHO MONTES DRIVE
PLACERVILLE, CA 95667



NEW

NOTE:
NEW VERIZON WIRELESS OUTDOOR CABINETS ON CONCRETE PAD, GENERATOR, (2) RAYCAPS, (1) GPS ANTENNA, METER, TELCO & INTERSECT CABINETS ON NEW H-FRAME, AND 150'-0" HIGH MONOPINE WITHIN NEW 30'-0" X 30'-0", 8'-0" TALL CMU WALL ENCLOSURE (LEASE AREA)

NEW VERIZON WIRELESS ANTENNAS W/ RRUS12 + A2, (12) TOTAL, (3) PER SECTOR AND RAYCAPS (2) TOTAL

NEW VERIZON WIRELESS 150'-0" TALL MONOPINE

NEW VERIZON WIRELESS MICROWAVE ANTENNAS (2) TOTAL

EXISTING



PHOTOSIMULATION
VIEW 2



OUTINGDALE
PSL # 295537
4260 RANCHO MONTES DRIVE
PLACERVILLE, CA 95667



NEW

NOTE:
NEW VERIZON WIRELESS OUTDOOR CABINETS ON CONCRETE PAD, GENERATOR, (2) RAYCAPS, (1) GPS ANTENNA, METER, TELCO & INTERSECT CABINETS ON NEW H-FRAME, AND 150'-0" HIGH MONOPINE WITHIN NEW 30'-0" X 30'-0", 8'-0" TALL CMU WALL ENCLOSURE (LEASE AREA)

EXISTING

NEW VERIZON WIRELESS
150'-0" TALL MONOPINE

PHOTOSIMULATION
VIEW 3



OUTINGDALE
PSL # 295537
4260 RANCHO MONTES DRIVE
PLACERVILLE, CA 95667



NEW

NOTE:
NEW VERIZON WIRELESS OUTDOOR CABINETS ON CONCRETE PAD, GENERATOR, (2) RAYCAPS, (1) GPS ANTENNA, METER, TELCO & INTERSECT CABINETS ON NEW H-FRAME, AND 150'-0" HIGH MONOPINE WITHIN NEW 30'-0" X 30'-0", 8'-0" TALL CMU WALL ENCLOSURE (LEASE AREA)

NEW VERIZON WIRELESS ANTENNAS W/ RRUS12 + A2, (12) TOTAL, (3) PER SECTOR AND RAYCAPS (2) TOTAL

NEW VERIZON WIRELESS 150'-0" TALL MONOPINE

NEW VERIZON WIRELESS MICROWAVE ANTENNAS (2) TOTAL

EXISTING



PHOTOSIMULATION
VIEW 4



OUTINGDALE
PSL # 295537
4260 RANCHO MONTES DRIVE
PLACERVILLE, CA 95667



NEW

NOTE:
NEW VERIZON WIRELESS OUTDOOR CABINETS
ON CONCRETE PAD, GENERATOR, (2) RAYCAPS,
(1) GPS ANTENNA, METER, TELCO & INTERSECT
CABINETS ON NEW H-FRAME, AND 150'-0" HIGH
MONOPINE WITHIN NEW 30'-0" X 30'-0", 8'-0" TALL
CMU WALL ENCLOSURE (LEASE AREA)

EXISTING

NEW VERIZON
WIRELESS 150'-0"
TALL MONOPINE


```

*****
*                               Federal Airways & Airspace
*
*                               Summary Report: New Construction
*
*                               Antenna Structure
*

```

```

*****

Airspace User: Not Identified

File: OUTINGDALE

Location:  Placerville, CA

Latitude:  38°-37'-3.13"           Longitude:
120°-44'-41.19"

SITE ELEVATION AMSL.....1917 ft.
STRUCTURE HEIGHT.....150 ft.
OVERALL HEIGHT AMSL.....2067 ft.

```

NOTICE CRITERIA

```

FAR 77.9(a): NNR (DNE 200 ft AGL)
FAR 77.9(b): NNR (DNE Notice Slope)
FAR 77.9(c): NNR (Not a Traverse Way)
FAR 77.9:    NNR FAR 77.9 IFR Straight-In Notice Criteria
for PVF
FAR 77.9:    NNR FAR 77.9 IFR Straight-In Notice Criteria
for O61
FAR 77.9(d): NNR (Off Airport Construction)

```

```

NR  = Notice Required
NNR = Notice Not Required
PNR = Possible Notice Required (depends upon actual IFR
procedure)
      For new construction review Air Navigation
Facilities at bottom
      of this report.

```

Notice to the FAA is not required at the analyzed location and height for slope, height or Straight-In procedures. Please review the 'Air Navigation' section for notice requirements for offset IFR procedures and EMI.

OBSTRUCTION STANDARDS

```

FAR 77.17(a)(1): DNE 499 ft AGL

```


FAR 77.17(a)(2): DNE - Airport Surface
 FAR 77.19(a): DNE - Horizontal Surface
 FAR 77.19(b): DNE - Conical Surface
 FAR 77.19(c): DNE - Primary Surface
 FAR 77.19(d): DNE - Approach Surface
 FAR 77.19(e): DNE - Transitional Surface

VFR TRAFFIC PATTERN AIRSPACE FOR: PVF: PLACERVILLE

Type: A RD: 38141.04 RE: 2578.8
 FAR 77.17(a)(1): DNE
 FAR 77.17(a)(2): DNE - Greater Than 5.99 NM.
 VFR Horizontal Surface: DNE
 VFR Conical Surface: DNE
 VFR Approach Slope: DNE
 VFR Transitional Slope: DNE

VFR TRAFFIC PATTERN AIRSPACE FOR: O61: CAMERON AIRPARK

Type: A RD: 71774.48 RE: 1267.3
 FAR 77.17(a)(1): DNE
 FAR 77.17(a)(2): DNE - Greater Than 5.99 NM.
 VFR Horizontal Surface: DNE
 VFR Conical Surface: DNE
 VFR Approach Slope: DNE
 VFR Transitional Slope: DNE

TERPS DEPARTURE PROCEDURE (FAA Order 8260.3, Volume 4)

FAR 77.17(a)(3) Departure Surface Criteria (40:1)
 DNE Departure Surface

MINIMUM OBSTACLE CLEARANCE ALTITUDE (MOCA)

FAR 77.17(a)(4) MOCA Altitude Enroute Criteria
 The Maximum Height Permitted is 3000 ft AMSL

PRIVATE LANDING FACILITIES

FACIL	BEARING	RANGE
DELTA ARP FAA		
IDENT TYP NAME	To FACIL	IN NM
ELEVATION IFR		

7CL9 AIR PERRYMAN	7.58	4.77
-------------------	------	------

-533

No Impact to VFr Transitional Surface.
 Below surface height of 377 ft above ARP.

AIR NAVIGATION ELECTRONIC FACILITIES

FAC	ST	DIST	DELTA
GRND APCH			
IDNT	TYPE	AT	FREQ VECTOR (ft) ELEVA ST LOCATION
ANGLE BEAR			

	HNW	VOR/DME	R	115.5	358.13	39057	-516	CA	HANGTOWN
-.76									
	SAC	RADAR ARSR	Y	1030.0	261.04	151665	+1902	CA	
Sacramento			.72						
	MCC	RADAR	ON	2820.	276.81	178348	+1897	CA	MC
CLELLAN AFB			.61						
	MCC	VOR/DME	R	109.2	275.71	189212	+2002	CA	MC
CLELLAN			.61						
	LIN	VORTAC	I	114.8	200.51	211228	+1807	CA	LINDEN
.49									

CFR Title 47, §1.30000-§1.30004

AM STUDY NOT REQUIRED: Structure is not near a FCC
licensed AM station.

Movement Method Proof as specified in §73.151(c) is not
required.

Please review 'AM Station Report' for details.

No AM Stations were located within 3.0 km.

Airspace® Summary Version 16.7.421

AIRSPACE® and TERPS® are registered ® trademarks of Federal
Airways & Airspace®
Copyright © 1989 - 2016

09-08-2016

15:15:55