

**El Dorado County Development Services/Building Services
Permit Center**

Plan Review Goals

OTC (Over the Counter):

- Residential permits:
 - Mechanical
 - Plumbing
 - Electrical
 - Reroofs
 - Remodels (as assessed by Plan reviewer)
 - Repairs (as assessed by Plan reviewer)
 - Fire Repairs (as assessed by Plan reviewer) *
- Non-residential
 - Reroofs: same for same (or as assessed by Plan reviewer)
- Revisions-residential (15-20 minutes)

Urgent (1-3 working days):**

- Photovoltaic
 - Roof mount and ground mount
- Non-residential:
 - Mechanical
 - Plumbing
 - Electrical
 - Signs (@ established centers)***
 - Building
 - Monument
 - Pole
 - T.I.'s: no intensification of use
- Conversions-residential
 - Covered patios
- Inspection exempt barns
- Remodels (not done OTC)
- Repairs (not done OTC)
- Revisions (not done OTC)
- Decks-small

Express (10 working days):

- Residential
 - Garages
 - Accessory buildings
 - Swimming pools
 - Decks-large
 - Grading
- Non-residential
 - T.I.'s (as assessed by Plan reviewer)
- 3rd party verifications (residential)****

Submitted by Ami
Doniphan
at Board Hearing of 5/20/08
31 & #52



*Fire repairs will be reviewed as soon as possible.

**Days are goals for initial plan review only; does not include other department/agency reviews

*** Established centers will have the 'Sign Criteria' researched and available for reviewing staff in a separate binder, so that research on these requirements does not have to be done with each application.

****Less complicated verifications may be able to be done in a quicker time frame.

Building reviewers:

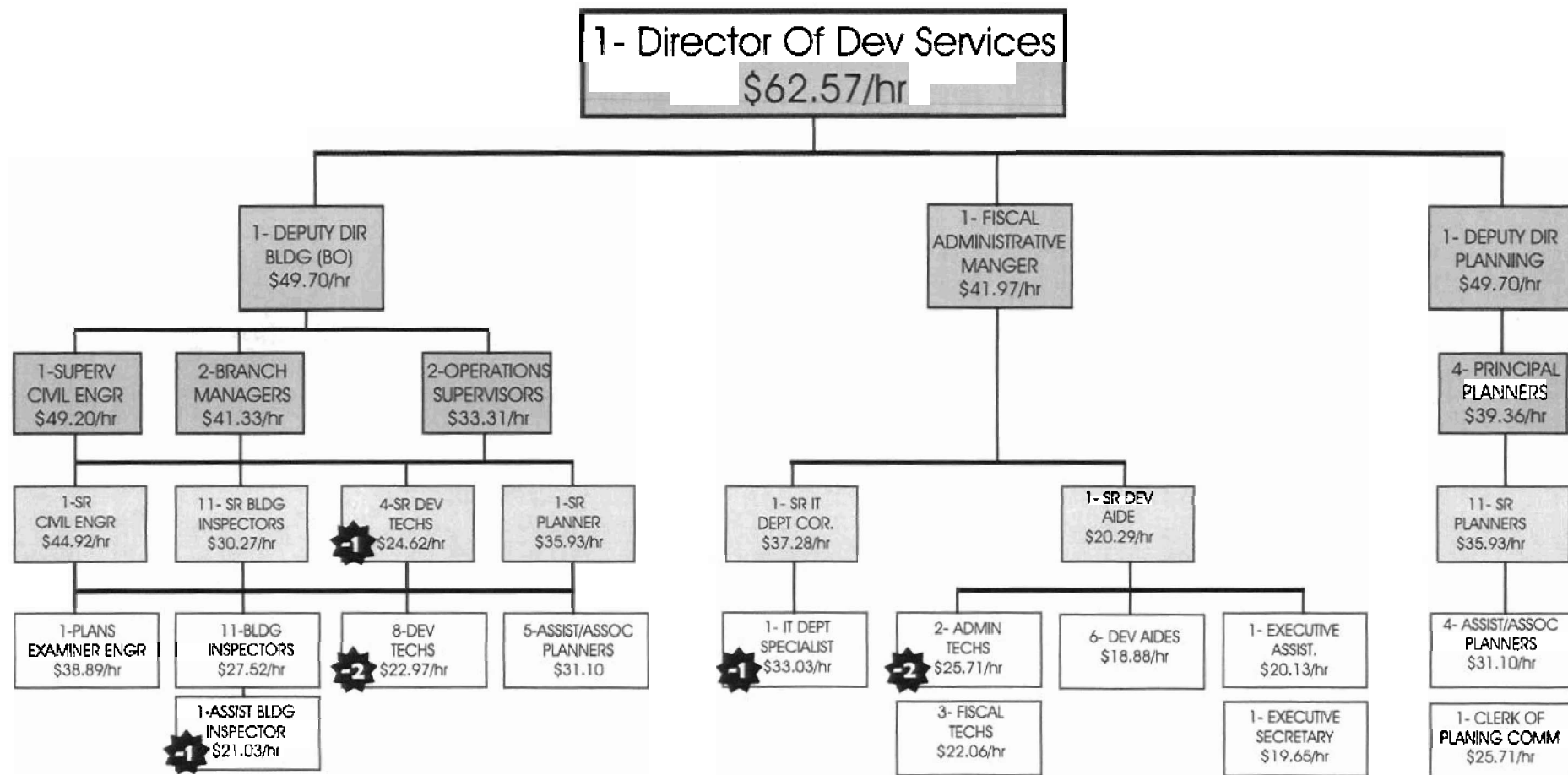
- Lynda Sund-Front Counter
Deb Karen-Front Counter
- Tom Davis-Inspector: available for backup, Urgent and Express reviews
- Dan Cornell-Inspector: available for Urgent and Express reviews
Steve Frizzle-Plan Review: available as backup as needed

Planning reviewers:

- Residential:
 - Tammi Gonsalves-Front Counter
 - Priscilla Maxwell-Front Counter
 - Tom Purciel-Front Counter backup
- Non-residential:
 - Tammi Gonsalves-"Triage"
 - Ellen VanDyke
 - Kristen Davis
 - Mark Millard-backup

Plan reviewer assessments:

- How to be processed (time frame)
- Plan requirements



Current Positions

13 Managers
30 Lead Workers
45 Line/Support staff

Proposed Positions

13 Managers
29 Lead Workers
39 Line/Support staff

This looks top heavy, why all the Managers for so many Lead Workers?
Lead Workers do a lot of the management duties
as far as overseeing employees.
There is more than a 1 to 1 ratio of Management/Lead Workers
over Line/Support Staff.
The proposed layoffs do not address this situation.