



M. McDougall # 32  
2-25-14

1037 Suncast Lane, Suite 111 • El Dorado Hills, CA 95762  
(916) 941-1411 • (916) 941-1474 fax

**Hand delivered to the Board of Supervisors**

February 25, 2014

Board of Supervisors  
El Dorado County  
330 Fair Lane  
Placerville, Ca 95667

**RE: Valley View Specific Plan  
West Valley View Village Lot W TM12-1506**

Dear Honorable Supervisors:

With this letter, we are requesting that the Board consider removing Lot 10 from the Lot W tentative subdivision map, bringing the total unit count to 72 residential units and 7 lettered lots as shown on the attached Exhibit.

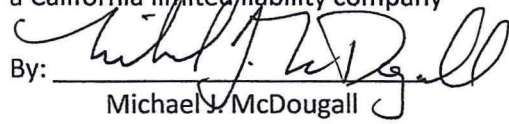
If approved with 72 residential lots, the following changes to the staff report and conditions of approval are required:

- 1. Addendum EIR**
  - a. Modify the project summary and descriptions in the Addendum EIR to reflect 72 residential lots.
- 2. Staff Report**
  - b. On page 1, change Request number 3 "*....creating 73 residential lots ranging....*" to "*....creating 72 residential lots ranging...*"
  - c. On page 3 change the Project Description from "*....creating 73 residential lots ranging....*" to "*....creating 72 residential lots ranging...*"
  - d. Replace following Exhibits: Exhibit F "Tentative Map", Exhibit G "Slope Map", Exhibit H "Preliminary Grading Plan", Exhibit I "Sound Wall/ Berm Exhibit" Exhibit K "Preliminary Development Plan", and Exhibit L The Tract Map Shown and the Landscaping Plan to reflect 72 residential lots.
  - e. Update Exhibit M the "Table 4- Tentative Map Lot Details" to reflect 72 residential lots.
- 3. Conditions of Approval**
  - f. Modify Condition of Approval number 1 to change "*....73 single-family residential lots...*" to "*....72 single-family residential lots...*"
  - g. Remove Condition of Approval number 26.
  - h. Remove Exhibit N as referenced in condition of approval number 26.

Thank you for your consideration to our request.

Sincerely,

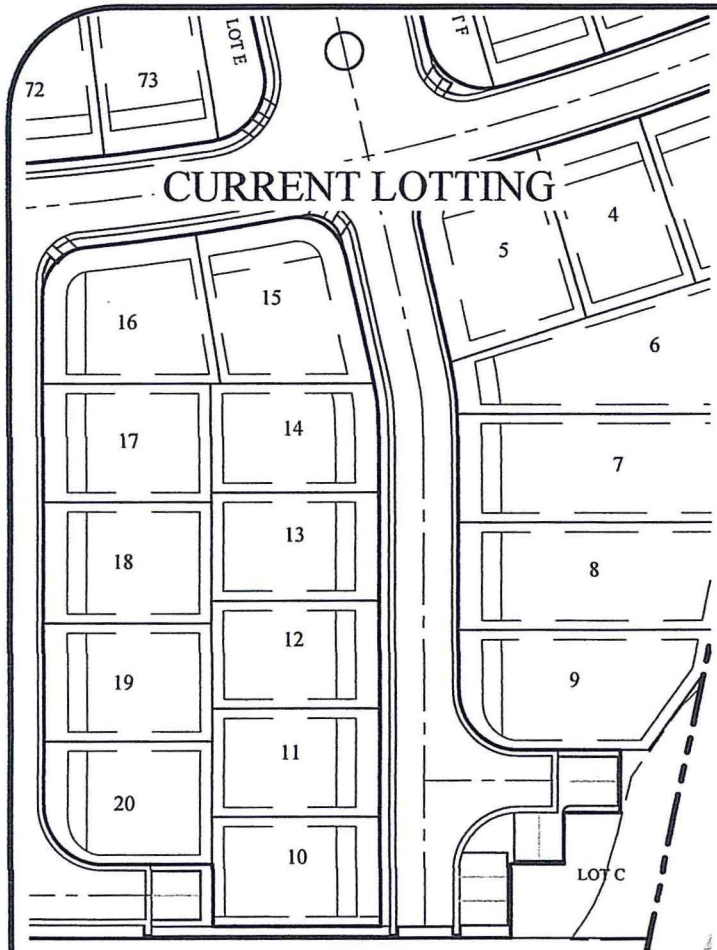
MJM Properties, LLC  
a California limited liability company

By: 

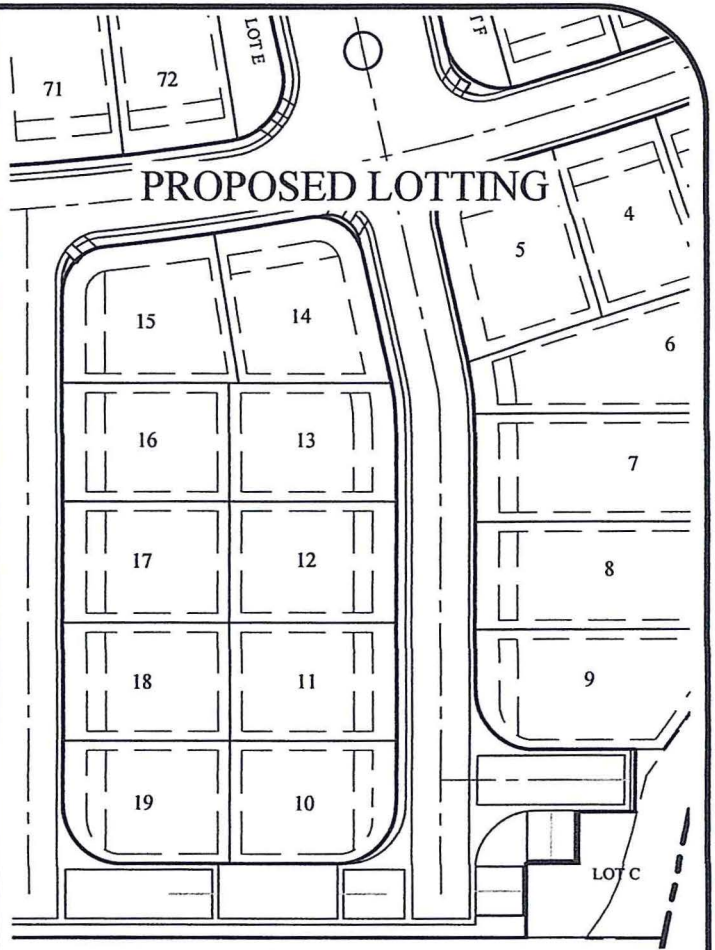
Michael J. McDougall  
President

Attachment

CC: Aaron Sussman, The New Home Company  
Roger Trout, Director, Development Services Department



**CURRENT LOTTING**



**PROPOSED LOTTING**

WEST VALLEY VILLAGE LOT W  
 RE-LOTING EXHIBIT  
 EL DORADO COUNTY, CALIFORNIA  
 SCALE: 1"=60' FEBRUARY, 2014

cta Engineering & Surveying  
 Civil Engineering • Land Surveying • Land Planning  
 3233 Monier Circle, Rancho Cordova, CA 95742  
 T (916) 638-0919 • F (916) 638-2479 • www.ctasurvey.com