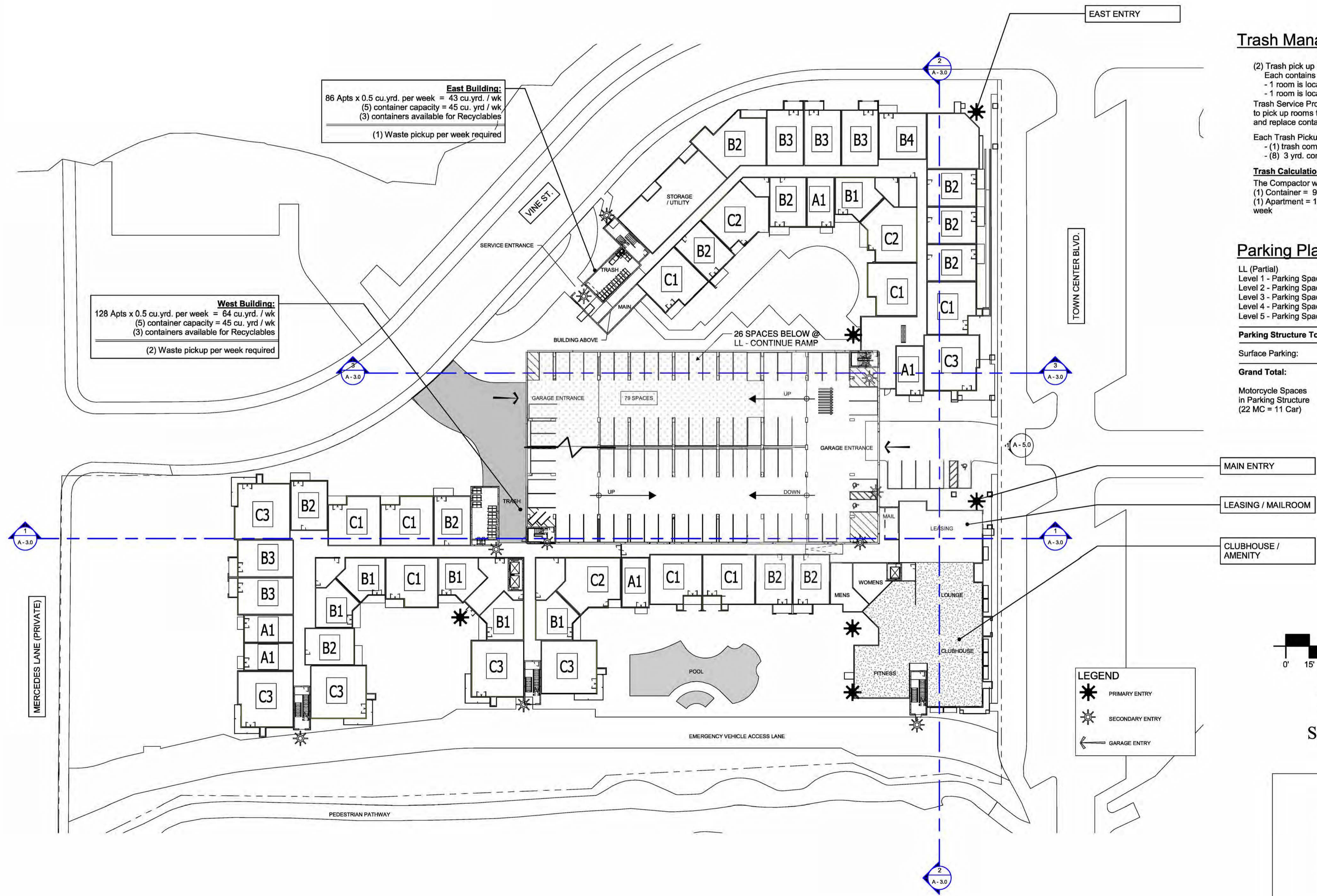


EL DORADO HILLS APARTMENTS

TOWN CENTER

EL DORADO COUNTY, CA



East Building:
 86 Apts x 0.5 cu.yrd. per week = 43 cu.yrd. / wk
 (5) container capacity = 45 cu. yrd / wk
 (3) containers available for Recyclables
 (1) Waste pickup per week required

West Building:
 128 Apts x 0.5 cu.yrd. per week = 64 cu.yrd. / wk
 (5) container capacity = 45 cu. yrd / wk
 (3) containers available for Recyclables
 (2) Waste pickup per week required

Trash Management Plan:

(2) Trash pick up locations with the building
 Each contains (1) Trash Chute & (1) Recycling Chute
 - 1 room is located on the East side
 - 1 room is located on the West side
 Trash Service Provider will have access to pick up rooms to roll out containers and replace containers as required.

Each Trash Pickup Room contains the following:
 - (1) trash compactor
 - (8) 3 yrd. containers with wheels

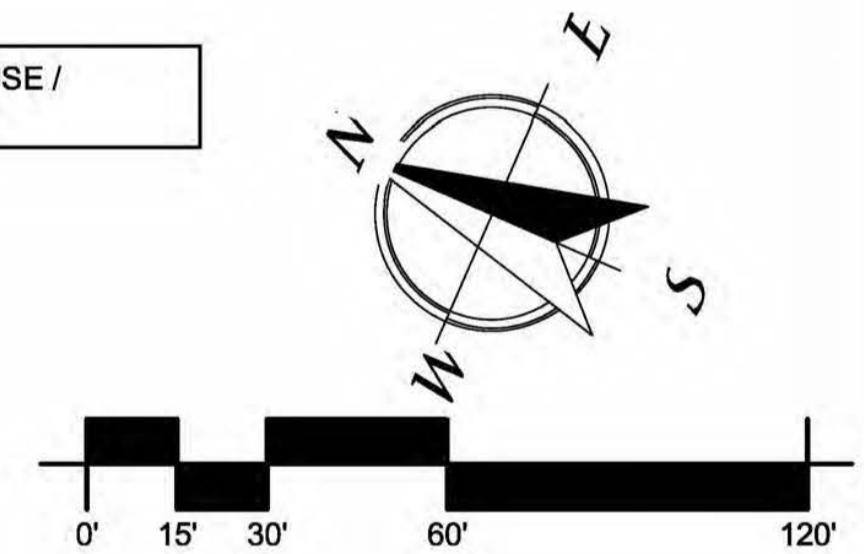
Trash Calculations:
 The Compactor works at a 3:1 ratio;
 (1) Container = 9 cu.yrd of waste
 (1) Apartment = 1/2 cu.yr. waste per week

Parking Plan:

LL (Partial)	26
Level 1 - Parking Spaces	79
Level 2 - Parking Spaces	83
Level 3 - Parking Spaces	83
Level 4 - Parking Spaces	83
Level 5 - Parking Spaces(Partial)	55
Parking Structure Total:	409
Surface Parking:	5
Grand Total:	414
Motorcycle Spaces in Parking Structure (22 MC = 11 Car)	22

LEGEND

- * PRIMARY ENTRY
- ☼ SECONDARY ENTRY
- ← GARAGE ENTRY



FIRST LEVEL
SHEET A - 1.0
 06/29/2017



2555 Walnut St.
 Denver, CO 80205
 Phone: (303) 832 - 4474
 Fax: (303) 832 - 4476