

**Behavioral Health Division Update  
Mental Health Commission  
August 23, 2017 Meeting**

**ASSISTANT & DEPUTY DIRECTOR UPDATES**

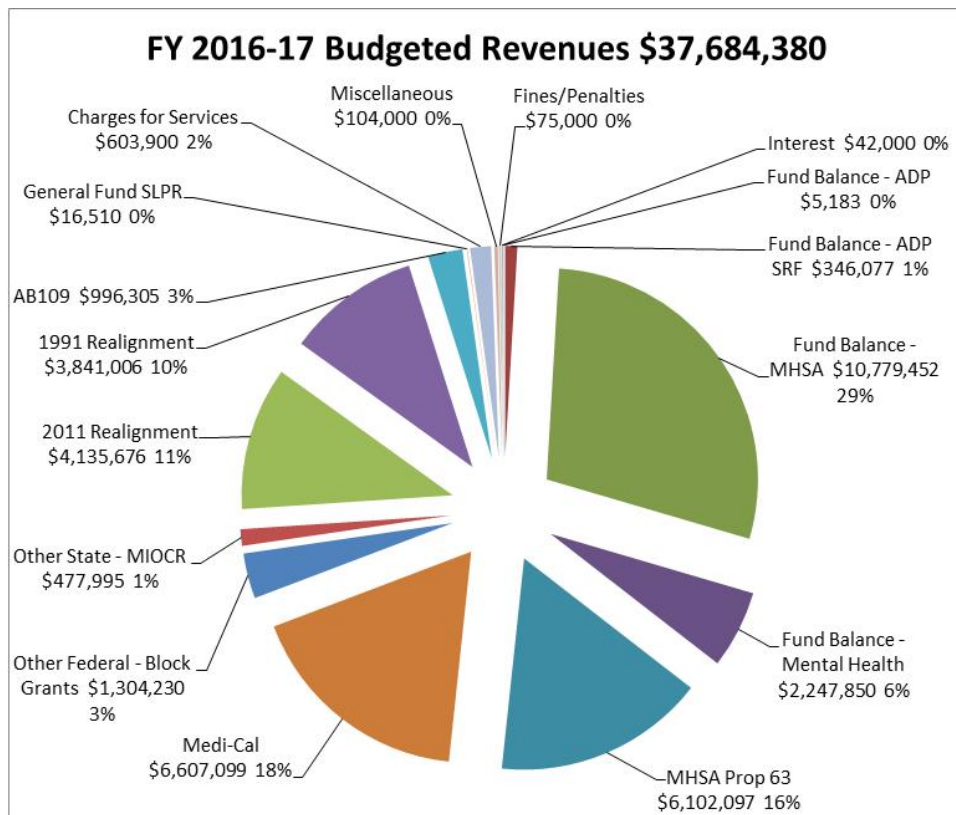
(Katy Eckert & Jamie Samboceti)

- The DMC-ODS Waiver Implementation Plan has been submitted to the State and we are awaiting feedback from the State. Additional activities related to the DMC-ODS Waiver include:
  - Drafting the DMC-ODS Fiscal Plan, which is due to the State by November 1.
  - Hosting Provider Stakeholder Meetings every other month starting in September to continue to build the provider network in El Dorado County.
  - Meeting with Aegis Treatment Centers, LLC to talk about the Medication Assisted Treatment (MAT) Expansion (aka the “Hub and Spoke”) grant award and determine what other interests may exist for providing services to our communities, both in South Lake Tahoe and Placerville.
- The Behavioral Health Division is gathering bylaws from other counties whose “Mental Health Commissions” have become “Behavioral Health Commissions.” The information gathered and proposed changes to the current Mental Health Commission Bylaws will be brought to this Commission in the fall.

**EL DORADO COUNTY BEHAVIORAL HEALTH DIVISION STAFFING:**

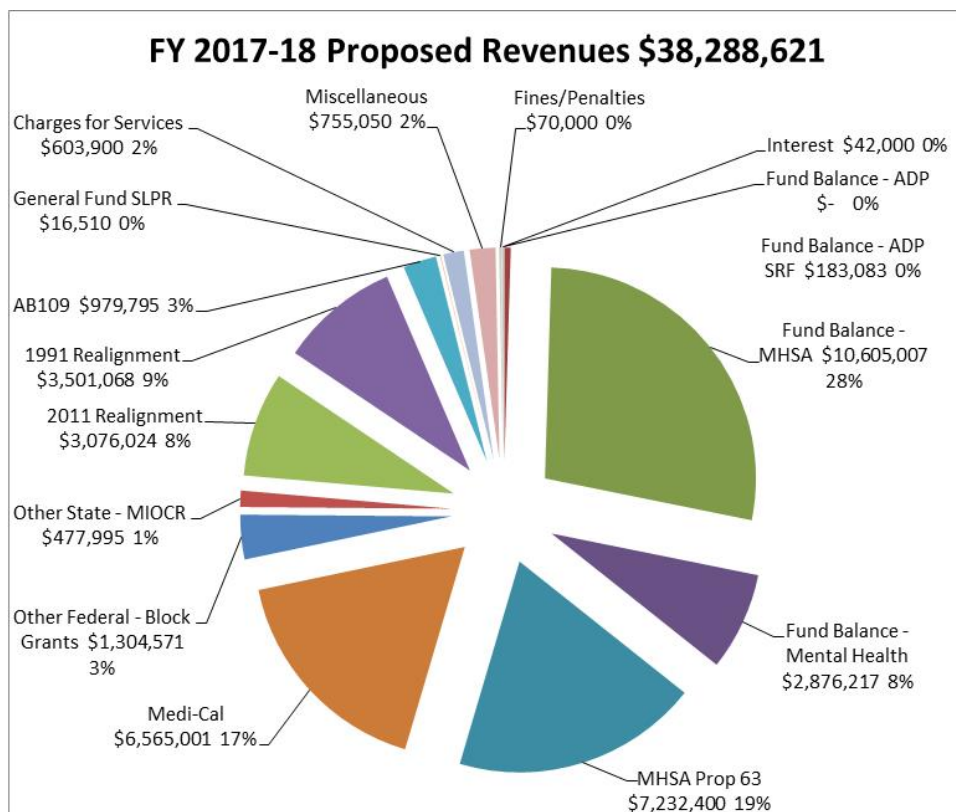
- **New Hires:**
  - SLT: Two Mental Health Workers - extra help
- **Promotions:**
  - None
- **Recruitments:**
  - Ongoing:
    - Sr. Department Analyst, MHSA Project Team WS
    - Mental Health Clinicians SLT and WS
    - Mental Health Aides SLT (Extra Help) and WS
  - New:
    - None
- **Separations:**
  - Carolyn Phillips - Mental Health Worker (moved over to CPS)
  - Jacqueline Nelson- Extra Help Mental Health Worker
  - Derek Becker- Mental Health Clinician-ICM
  - Amie Sokolay- Mental Health Aide/Driver
- **Position Changes:**
  - Kate Hilbert, Clinician, is moving from the Access Team to the TAY program (WS)

## EL DORADO COUNTY BEHAVIORAL HEALTH FINANCIAL UPDATE:



### Highlights:

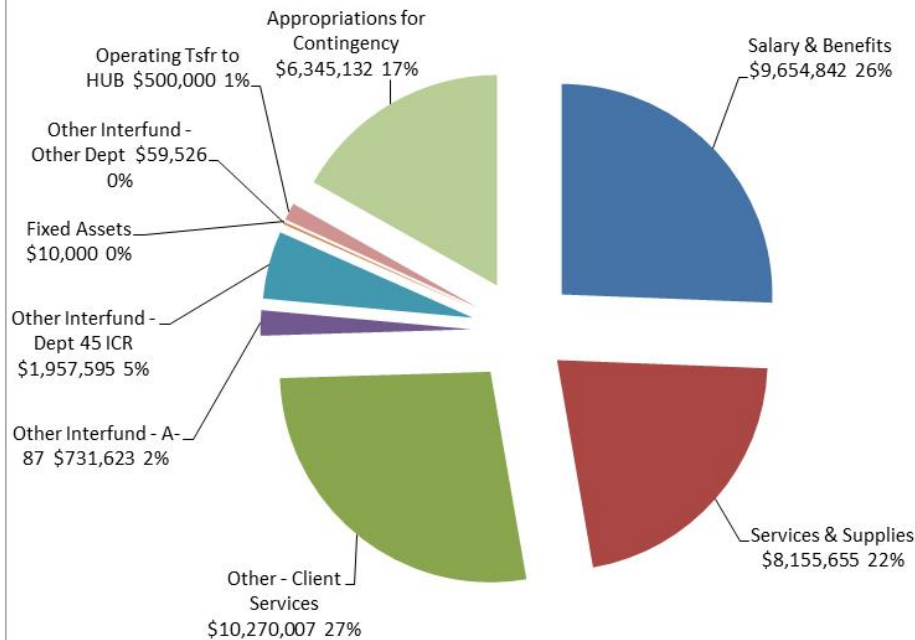
- Most funding coming into Behavioral Health is tied to delivery of services for specified programs.
- Base funding levels for individual counties are now set for 2011 Realignment.
- The county budgets full use of fund balance on the revenue side and an appropriation for contingencies on the expense side to allow flexibility throughout the year.
- MHSAs Revenues are paid at an estimated rate all year long, a true up occurs in the July/August timeframe. The true up can either greatly increase or decrease revenues received for the year.



### Areas of Concern:

- When the economy slows down and sales tax receipts drop statewide, we will experience a reduction in 1991 & 2011 Realignment.
- When the economy slows and California millionaire's income levels drop, MHSAs revenues will likewise drop.

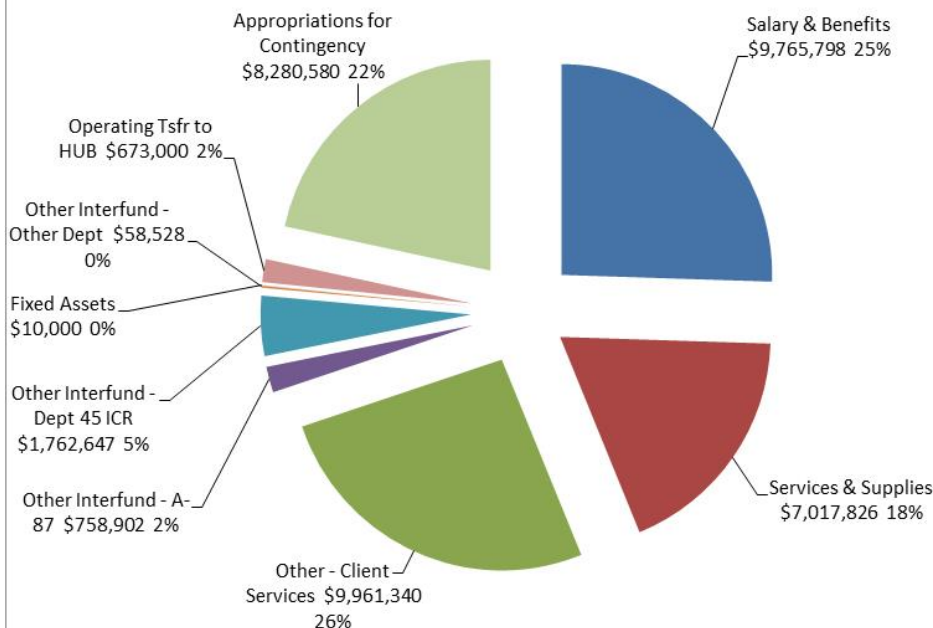
### FY 2016-17 Budgeted Expenses \$37,684,380



#### Highlights:

- Most funding coming into Behavioral Health is tied to delivery of services for specified programs.
- Base funding levels for individual counties are now set for 2011 Realignment.
- The county budgets full use of fund balance on the revenue side and an appropriation for contingencies on the expense side to allow flexibility throughout the year.
- MHSA Revenues are paid at an estimated rate all year long, a true up occurs in the July/August timeframe. The true up can either greatly increase or decrease revenues received for the year.

### FY 2017-18 Proposed Expenses \$38,288,621



#### Areas of Concern:

- When the economy slows down and sales tax receipts drop statewide, we will experience a reduction in 1991 & 2011 Realignment.
- When the economy slows and California millionaire's income levels drop, MHSA revenues will likewise drop.

## CASELOAD AND NEW SERVICE REQUEST DATA

### Unduplicated Caseload as of July 2017

Children's Outpatient South Lake Tahoe	Clients	Children's Outpatient West Slope	Clients	Total
TAY	7	TAY	23	30
Clinic	2	Clinic	29	31
Contractor: Sierra Child & Family Services (SCF)	36	Contractor: Sierra Child & Family Services (SCF)	65	101
Contractor: Tahoe Youth & Family (TY)	4	n/a		4
		Contractor: Summitview (SV)	57	57
		Contractor: New Morning (NM)	18	18
		Contractor: Stanford Youth Solutions (SYS)	2	2
<b>Subtotal Children's</b>	49	<b>Subtotal Children's</b>	194	243

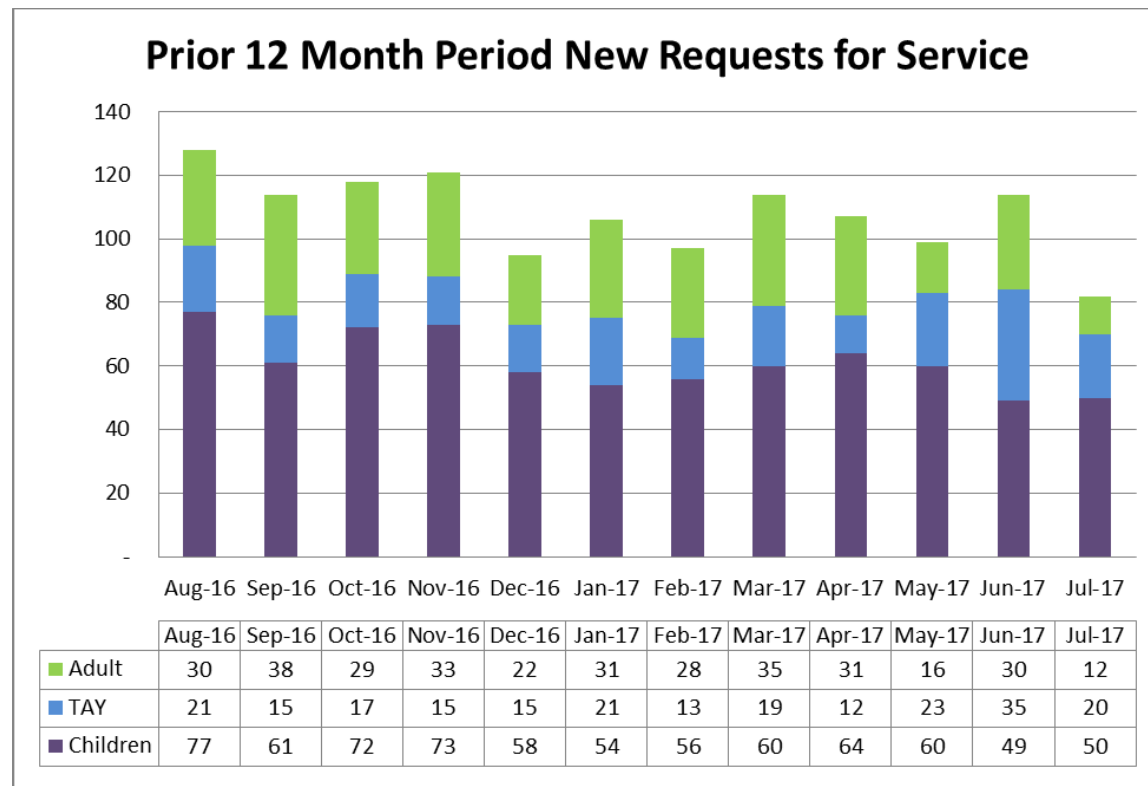
  

Adult Outpatient South Lake Tahoe	Clients	Adult Outpatient West Slope	Clients	Total
Clinic	44	Clinic	262	306
ICM/FSP	16	ICM/FSP	48	64
<b>Subtotal Adults</b>	60	<b>Subtotal Adults</b>	310	370

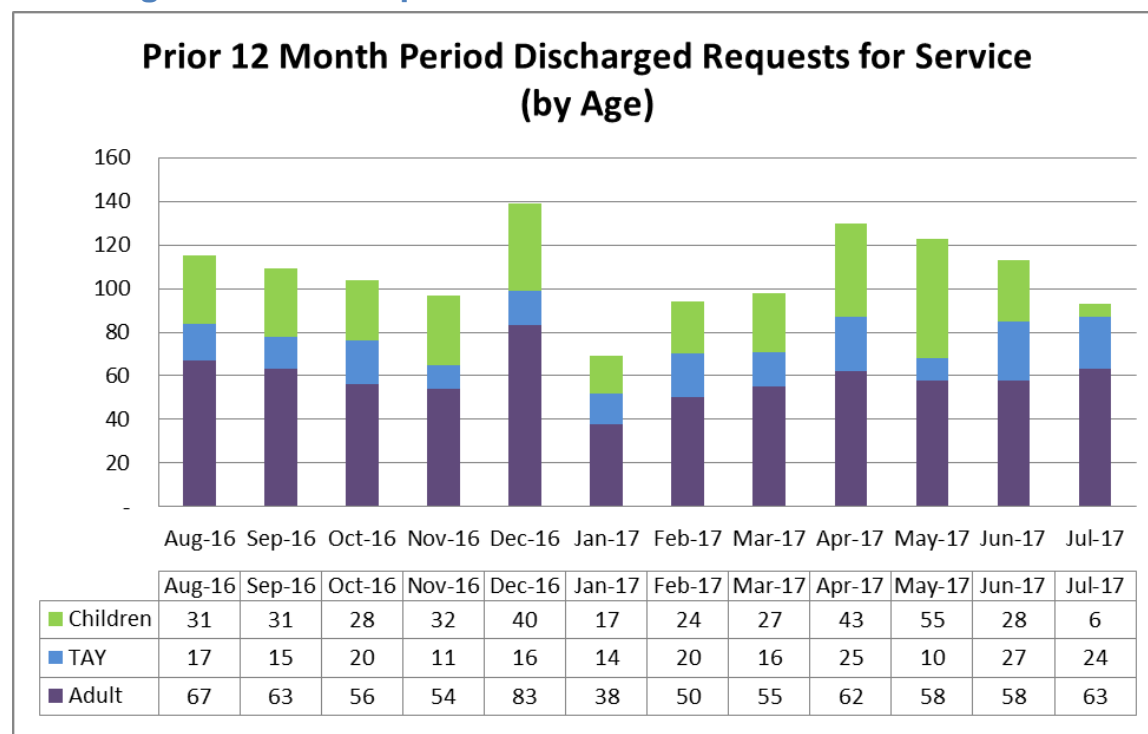
  

<b>Total South Lake Tahoe</b>	109	<b>Total West Slope</b>	504	613
-------------------------------	-----	-------------------------	-----	-----

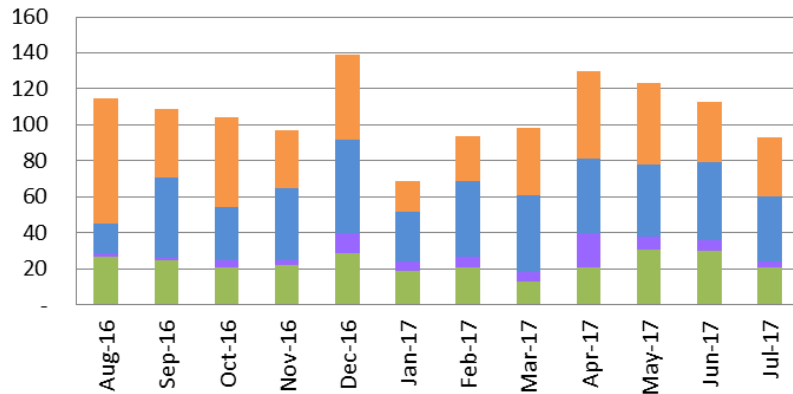
## New Service Request Trends



## Discharged Service Request Trends



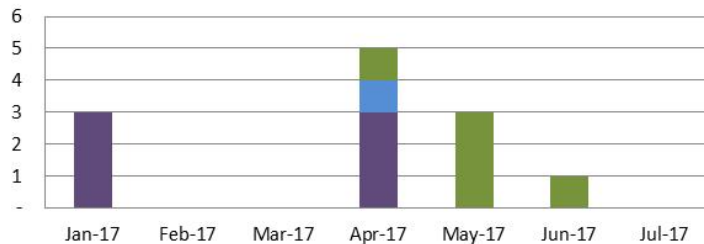
### Prior 12 Month Period Discharged Requests for Service (by Disposition)



	Aug-16	Sep-16	Oct-16	Nov-16	Dec-16	Jan-17	Feb-17	Mar-17	Apr-17	May-17	Jun-17	Jul-17
To BHD OP Services	70	38	50	32	47	17	25	37	49	45	34	33
To Other MH Provider	16	45	29	40	52	28	42	43	41	40	43	36
Does Not Meet Medical Necessity	2	1	4	3	11	5	6	5	19	7	6	3
Other	27	25	21	22	29	19	21	13	21	31	30	21

### Assisted Outpatient Treatment: (Rhapsody Flores)

#### Assisted Outpatient Treatment Referrals



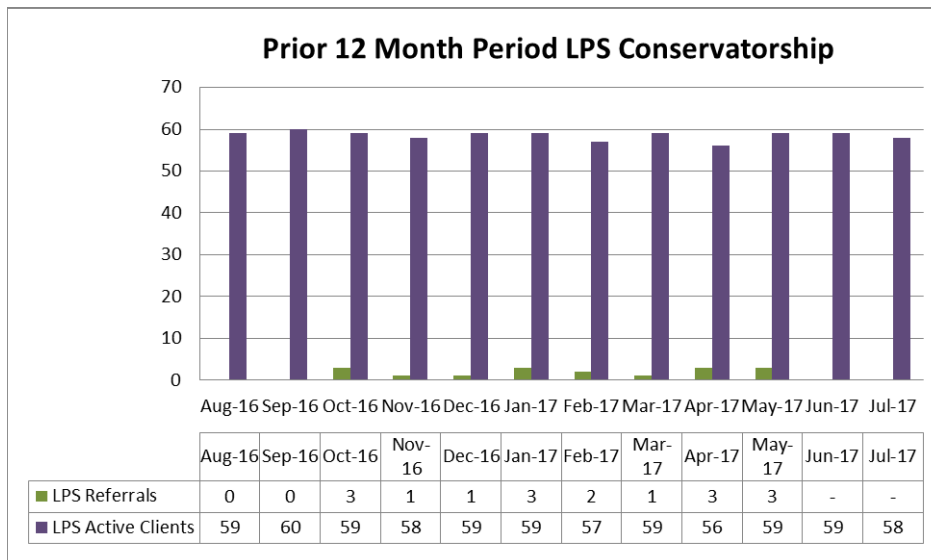
	Jan-17	Feb-17	Mar-17	Apr-17	May-17	Jun-17	Jul-17
Met AOT Criteria	-	-	-	1	3	1	-
Did Not Meet AOT Criteria	-	-	-	1	-	-	-
Could Not Locate	3	-	-	3	-	-	-
In Review	-	-	-	-	-	-	-

#### Of those that "Met AOT Criteria":

Voluntary as a Full Service Partnership (FSP) client:	1
Petition filed:	0
Arrested before engagement could occur:	1
Disappeared during engagement activities:	1
Engagement attempts continue:	2

August 18, 2017: The Assisted Outpatient Treatment referrals were reviewed for consistent recording of dates and the new results are reflected above.

## LPS Conservatorship: (Rhapsody Flores)



### LPS Active Clients:

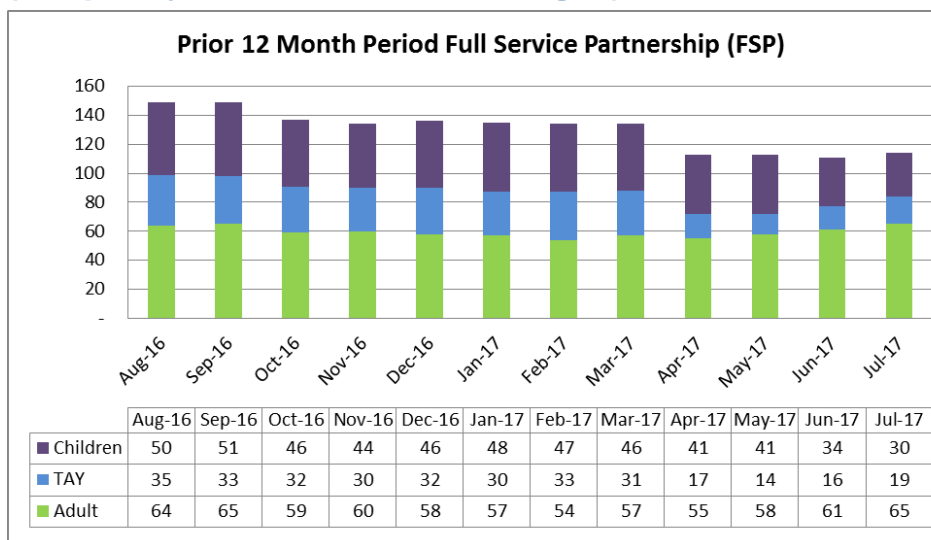
**56** LPS Conservatorships  
**2** Temporary  
 Conservatorships

### LPS Terminations:

**2** LPS Terminations\*  
**1** Pending LPS  
 Terminations

\* Both were long-term LPS  
 Conservatorships

## Full Service Partnership (FSP) and Intensive Case Management (ICM) (Rhapsody Flores and Karen Naegeli)



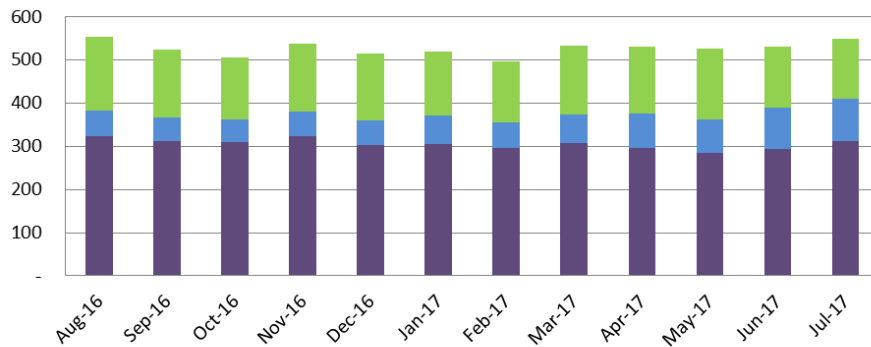
### Intensive Case Management

- West Slope: Serving **40** clients
- 4 clients will be transferring to outpatient services in August
- SLT: Serving **20** clients

## Outpatient Services (excludes FSP and Out-of-County Placements)

### Prior 12 Month Period Outpatient Clients

(Excludes FSP and Out-of-County Clients)



	Aug-16	Sep-16	Oct-16	Nov-16	Dec-16	Jan-17	Feb-17	Mar-17	Apr-17	May-17	Jun-17	Jul-17
Children	171	156	143	158	155	148	141	159	156	165	141	137
TAY	58	55	53	57	58	67	59	66	80	77	96	98
Adult	324	312	309	323	302	305	296	307	295	284	294	313

#### July discharges:

#### 12 Children discharged from all services

3 Tahoe  
9 West Slope  
0 Out of County

#### 14 TAY discharged from all services

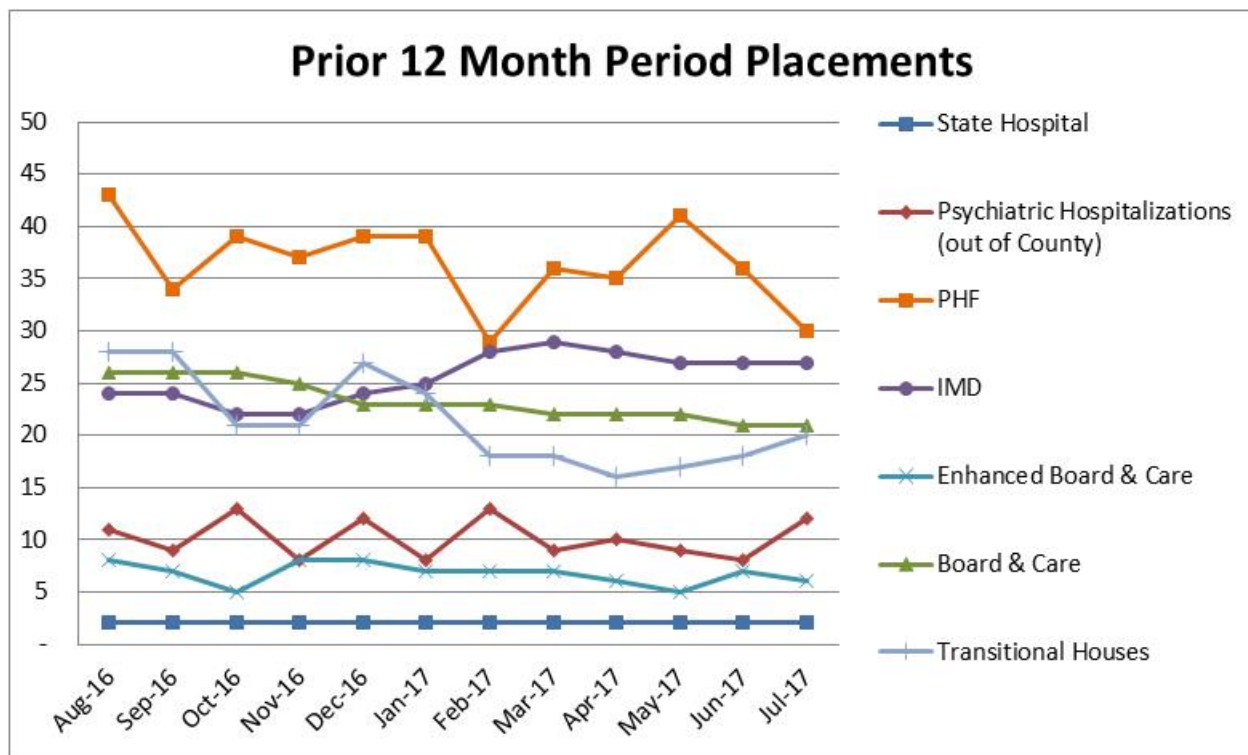
3 Tahoe  
10 West Slope  
1 Out of County

#### 32 Adults discharged from all services

4 Tahoe  
28 West Slope  
0 Out of County



## PLACEMENTS



### Board and Care / IMDs / Secure Placements (Rhapsody Flores)

- **27** IMD beds - Crestwood/Canyon Manor/California Psychiatric Transitions (CPT)
- **2** State Hospital
- **6** Enhanced Board and Care beds including Willow Glen & Silver Ridge
- **21** Board and Care - Sacramento & Galt (including Grace Home)
- **Total:**
  - **51** Out of County Placements
  - **5** In County Placements (Silver Ridge)
- The Adult Placement Committee is currently working on getting updated information on the clients currently at the State Hospital level of care. Behavioral Health and Public Guardian are looking at ways to better support the client's level care needs.

### Transitions Treatment Program / MIOCR (Rhapsody Flores / Sabrina Owen)

- **WS:** 11 of 15 beds filled
- **SLT:** 9 of 12 beds filled :
  - T1 2 openings,
  - T2 (MIOCR) 1 opening (one of these reserved for sub use tx client)

## **Permanent Supportive Housing (Ren Scammon / Sabrina Owen)**

### **Trailside Terrace**

Clients receive services from the Wellness and Recovery team or from community based supports

- 5 of 5 units occupied
- Wait List:
  - 1 bedroom: 12
  - 2 bedroom: 5
  - 3 bedroom: 1

### **The Aspens at South Lake**

Clients receive ICM team coverage

- 6 of 6 units occupied
- Wait List: 2 known
  - The Aspens is a floating unit configuration based on household size rather than a specific number of apartments for each number of bedrooms

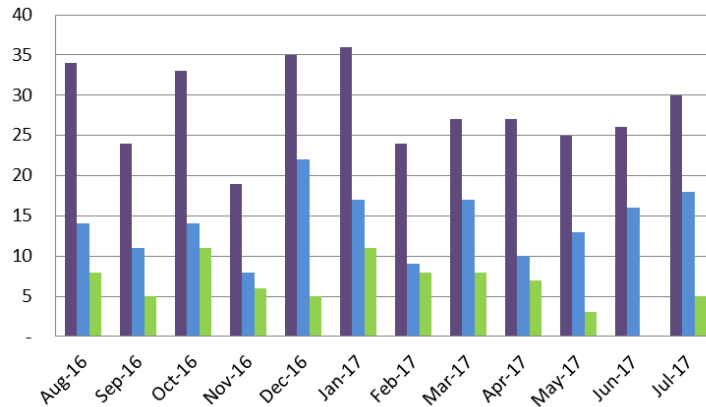
## **Psychiatric Health Facility (Jamie Samboceti)**

- There were 30 Admissions in July, 2017; 17 Admissions were El Dorado County residents and 13 were Out of County residents.
- There were 12 El Dorado County residents discharged in July, 2017; 9 to Home with Support, 1 to Home without support, -- MHRC, -- Board and Care, -- to ICM T-House, 1 to Shelter, -- to Other, and 1 to Emergency Department.
- Upon discharge, 11 El Dorado County residents were insured and 1 El Dorado County residents were pending insurance.
- During the month of July, there were 1 Seclusion Episodes, 0 Physical Restraint Episodes (0 minutes), 1 Assaults (1 clients), 0 Elopements, 1 Medication Errors, Client Surveys: 6.
- There were 5 denials of El Dorado County referrals: Ongoing medical care beyond the capability of the PHF staff to manage safely (incontinence care), suboxone-opioid dependence, primary diagnosis of substance abuse disorder, placed at another treatment facility, discharged from the hospital to home.
- Average daily census was 9 (range 6-14), with 7 average length of stay of days.

## CRISIS SERVICES

### Psychiatric Emergency Services (PES) (Sabrina Owen and Angie Larrigan)

**Prior 12 Month Period Psychiatric Emergency Services - SLT**



	Aug-16	Sep-16	Oct-16	Nov-16	Dec-16	Jan-17	Feb-17	Mar-17	Apr-17	May-17	Jun-17	Jul-17
■ Crisis Assessments	34	24	33	19	35	36	24	27	27	25	26	30
■ Hospitalizations	14	11	14	8	22	17	9	17	10	13	16	18
■ Referrals to Substance Use Treatment	8	5	11	6	5	11	8	8	7	3	-	5

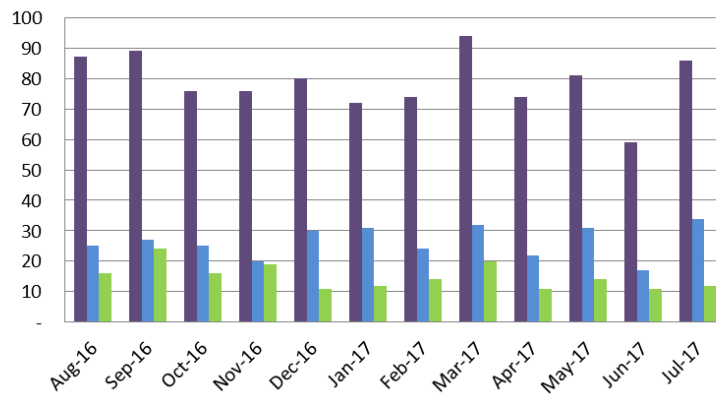
#### Crisis Assessments for Open Clients:

- SLT: 4
- West Slope: 13

#### Hospitalizations of Open Clients

- SLT: 2
- West Slope: 5

**Prior 12 Month Period Psychiatric Emergency Services - WS**



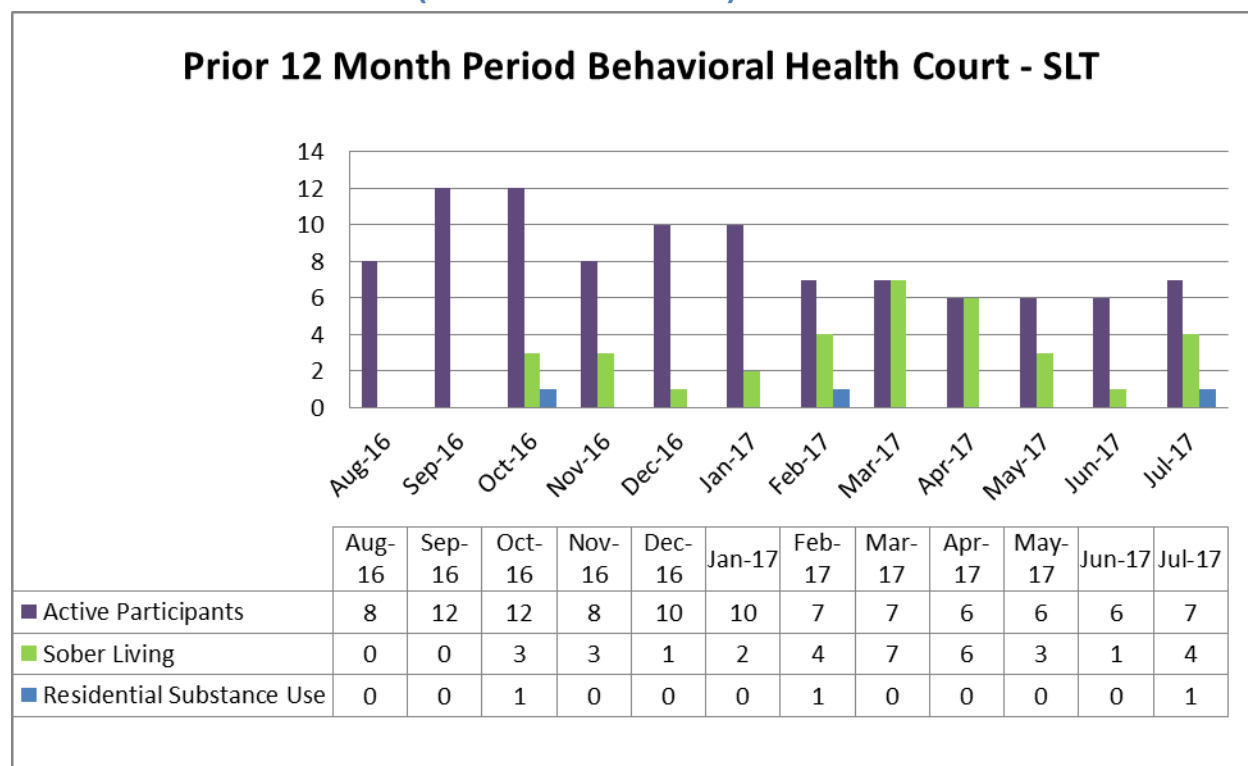
	Aug-16	Sep-16	Oct-16	Nov-16	Dec-16	Jan-17	Feb-17	Mar-17	Apr-17	May-17	Jun-17	Jul-17
■ Crisis Assessments	87	89	76	76	80	72	74	94	74	81	59	86
■ Hospitalizations	25	27	25	20	30	31	24	32	22	31	17	34
■ Referrals to Substance Use Treatment	16	24	16	19	11	12	14	20	11	14	11	12

## Crisis Intervention Teams (CIT) (Angie Larrigan and Sabrina Owen)

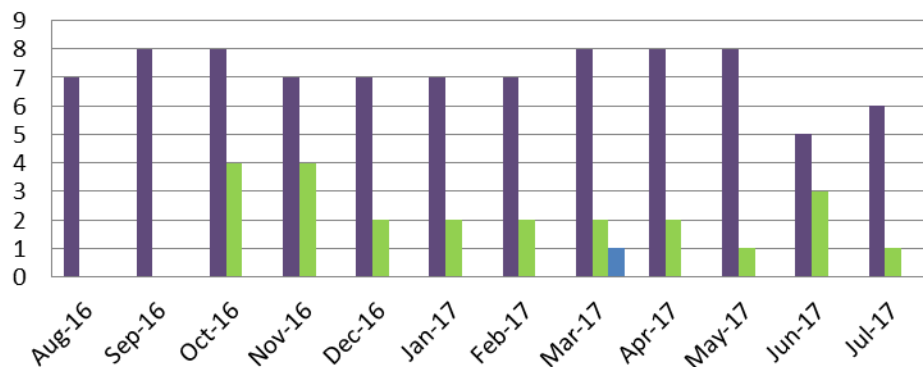
- **SLT:**
  - Continue to work with law enforcement to identify individuals who may need services and ensure that individuals brought to the ER for psychiatric evaluations have an appropriately completed 5150.
- **WS:**
  - Collaboration and partnership continues to expand with law enforcement.
  - The Manager of the Psychiatric Emergency Services team accompanied the Sheriff's Homeless Outreach Team (HOT) into the community to provide outreach mental health services to homeless individuals. Four assessments were completed and of the four assessments, two met criteria for Specialty Mental Health Services. Of the two individuals who met criteria, one is actively engaged in services.
  - The Manager of the Psychiatric Emergency Services team accompanied Placerville Police Department in the field to provide a mental health perspective on individuals who frequently utilize emergency services.
  - The Manager of the Psychiatric Emergency Services team partnered with the California Highway Patrol Crisis Intervention Team in the field, which resulted in an appropriate disposition

## JUSTICE SERVICES

### Behavioral Health Court (John Schumacher)



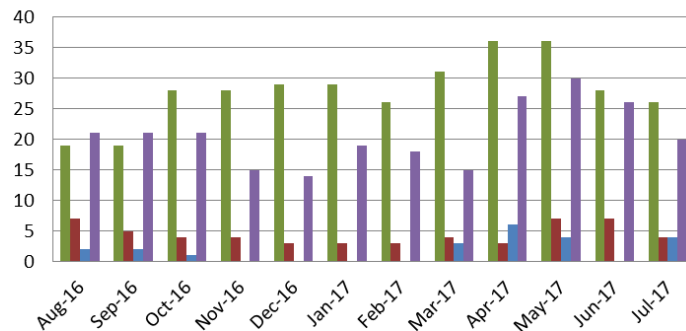
## Prior 12 Month Period Behavioral Health Court - WS



	Aug-16	Sep-16	Oct-16	Nov-16	Dec-16	Jan-17	Feb-17	Mar-17	Apr-17	May-17	Jun-17	Jul-17
Active Participants	7	8	8	7	7	7	7	8	8	8	5	6
Sober Living	0	0	4	4	2	2	2	2	2	1	3	1
Residential Substance Use	0	0	0	0	0	0	0	1	0	0	0	0

## AB 109 (John Schumacher)

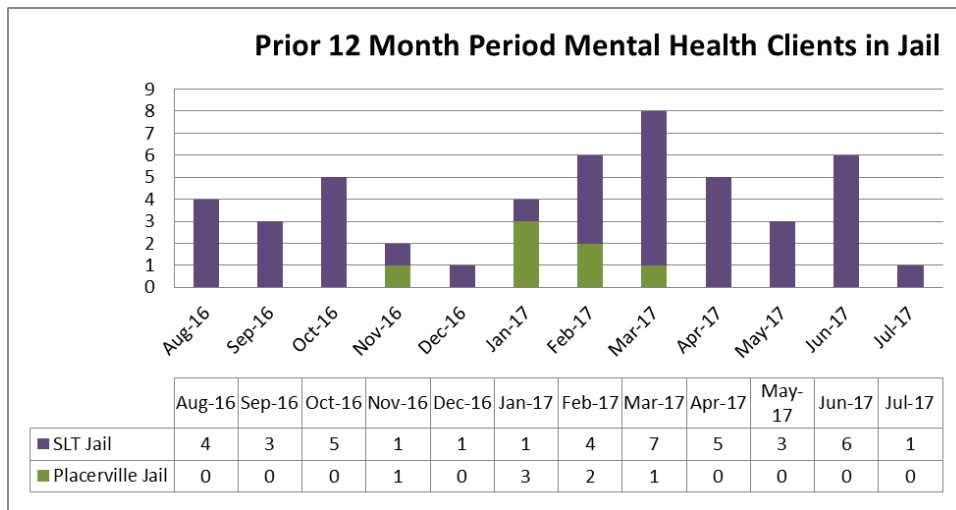
### Prior 12 Month Period AB 109 Client Services at the Community Corrections Center



	Aug-16	Sep-16	Oct-16	Nov-16	Dec-16	Jan-17	Feb-17	Mar-17	Apr-17	May-17	Jun-17	Jul-17
Substance Use Treatment @ CCC	19	19	28	28	29	29	26	31	36	36	28	26
Sober Living	7	5	4	4	3	3	3	4	3	7	7	4
Residential Substance Use	2	2	1	0	0	0	0	3	6	4	-	4
Mental Health Services	21	21	21	15	14	19	18	15	27	30	26	20

- 5 clients are receiving Substance Use Education services in the South Lake Tahoe jail. *Moral Reconation Therapy/SUD treatment on hold and will resume within 30 days. The new Health Program Specialist recently completed training for MRT and is preparing to start services.*
- 14 clients are receiving Substance Use Disorder treatment in Placerville Jail.
- 3 clients is receiving treatment from a contracted community provider in SLT
- 2 clients are receiving treatment from a contracted community provider in Placerville

## Mental Health Clients in Jail (Jamie Samboceti)



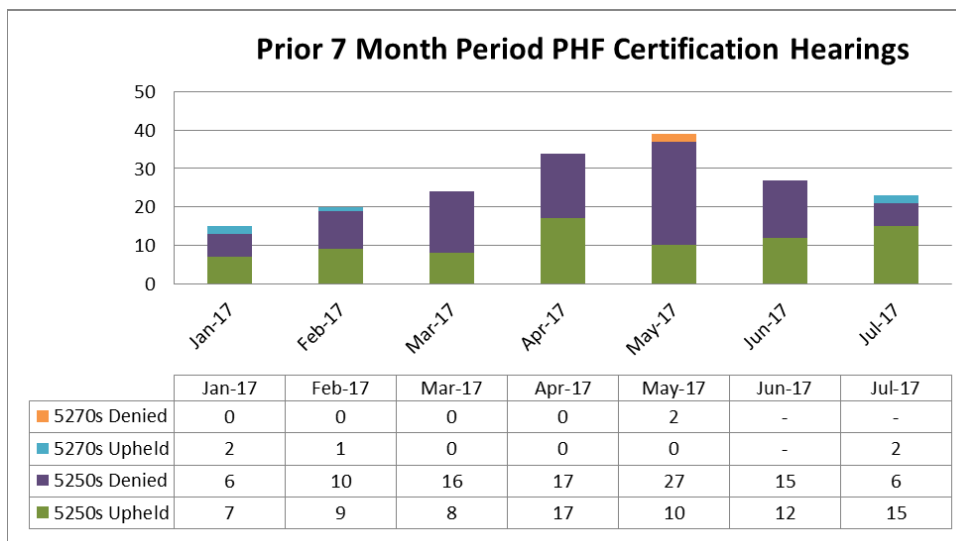
Count of clients that were open to Mental Health services at the time of their incarceration in the Placerville or SLT Jails only.

## Restoration of Competency (Rhapsody Flores)

- 0 Outpatient ROC referrals; 0 Jail ROC referral
- 0 client receiving ROC Outpatient services
- 1 client receiving ROC Inpatient services (CPT)

## QUALITY ASSURANCE & PATIENT RIGHTS

### Patients' Rights Advocate (Dani Mills)



Certification hearings are held at the PHF on Mondays and Thursdays.

## Quality Improvement/Utilization Review (Ren Scammon)

- SAMHSA released the fourth edition of its *Behavioral Health Barometer* state reports. These reports include data about key issues such as the prevalence of

substance use, serious thoughts of suicide, serious mental illness, and treatment, for each state and the District of Columbia. The findings are presented by age, gender, racial and ethnic categories, poverty status, and health insurance status. Although the data is not specific to El Dorado County, it does provide an overview of issues in our State. The report for California can be accessed here: <https://store.samhsa.gov/shin/content//SMA17-BAROUS-16/SMA17-BAROUS-16-CA.pdf>.

- The State has released their Dashboards for Children/Youth and Adults. These items have been added to the State's website and the County's website.
  - State: [http://www.dhcs.ca.gov/services/MH/Pages/SMHS\\_Performance\\_Dashboard.aspx](http://www.dhcs.ca.gov/services/MH/Pages/SMHS_Performance_Dashboard.aspx)
  - El Dorado County: [https://www.edcgov.us/Government/MentalHealth/QI/Pages/quality\\_improvement.aspx](https://www.edcgov.us/Government/MentalHealth/QI/Pages/quality_improvement.aspx)

### Grievances/Appeals/Hearings (Ren Scammon)

Month Filed	Month Completed	Type	Topic	Location	Outcomes (Appeals / Hearings Only)
06-2017	07-2017	Hearing	Access: Services closed and client referred back to Primary Care Provider	WS Adult	Individual no longer met criteria for Specialty Mental Health Services.
06-2017		Grievance	Quality of Care: Staff Behavior Concern	PHF	--
08-2017		Grievance	Quality of Care: Staff Behavior Concern	PHF	--

### PERFORMANCE IMPROVEMENT METRICS (reported quarterly)

Next Report Period: Quarter 1 July through September 2017)

Reporting Month: October 2017

### PROGRAM ACTIVITY UPDATES

#### MENTAL HEALTH SERVICES ACT (MHSA) (Ren Scammon/Tami Smith)

- The MHSA Team continues to recruit for a new MHSA Coordinator (Sr. Department Analyst).
- Implementation of the new plan continues. The Request for Proposal for the PEI Primary Intervention Project is being routed for approvals. The MHSA Team is in contact with Barton Foundation regarding expansion of the PEI Older Adults

Enrichment programs into the Tahoe Basin. The Behavioral Health Division is working with the Sheriff's Office on implementing mobile services in support of the PEI Community-Based Outreach and Linkage program. Contract amendments (as may be needed to extend current services) are in process. Planning is underway for the Older Adult Full Service Partnership with other units in the Adult System of Care.

## **OUTPATIENT SERVICES**

**(Sabrina Owen and Karen Naegeli (SLT); Parivash Mottaghian, Lesly Van Sloten and Rhapsody Flores (WS))**

### **Wellness Center July Activities:**

Tahoe:

- Participants enjoyed a lakeside Hawaiian themed BBQ with opportunities to learn to paddle board (fall down 7, stand up 8).

West Slope:

- To ease the effects of the heat, we had water balloon toss competitions.
- Mistert's have been installed and are very helpful in keeping people cool, especially during the line dancing on Tuesdays and Thursdays.
- The dried Mangoes (consumer band) expanded in so many ways: besides the current 6 members, there are now 4 singers who join the band every week during practice. In the month of July, the band received a donation of a set of Bongos by a consumer.
- Wellness Center participants now have access to additional sitting area for socialization. This became possible as the result of great teamwork between consumer volunteers and mental health workers.
- The summer weekly BBQs are going very well. Teams of consumer volunteers and mental health workers take turns in preparing a nutritious lunch and clean up afterwards.

### **ICM - July Activities:**

Tahoe:

- Clients and staff alike enjoyed a Caples lake fishing & swimming trip.
- Clients are taking advantage of free weekly beach concerts that are within walking and/or biking distance.

West Slope:

- ICM held their 3rd Annual West Slope TTP Luau. The resident vs staff volleyball game was once again won by the TTP residents.
- Scott Fisher & Kevin Corley took ICM clients on 2 fishing trips: Silver Lake & Union Valley. Clients caught 5 fish during the Silver Lake trip.
- Cristina Nunez, Resource Specialist, was able to support 1 TTP resident in getting enrolled at Folsom Lake College for her first college course.



### Children's Services (Angie Larrigan)

- El Dorado County Behavioral Health Utilization Review team and Children's Specialty Mental Health Services providers continue to work with Child Welfare Services to enhance the efficiency of Children and Family Team meetings with a focus on providing unduplicated, effective and strategic meetings.
- HHSA continues to await guidelines for implementation of additional AB403 Continuum of Care Reform stages which have been anticipated to roll out between now and 2021.
- A new ACL/IN regarding AB1299 has been issued. The notice provides guidance surrounding the implementation of Presumptive Transfer for Foster Children Placed Out of County (AB1299). The mission of AB1299 is to provide children and youth in foster care who are placed outside their counties of original jurisdiction access to SMHS in a timely manner, based upon their individual strengths and needs, and consistent with Early and Periodic Screening Diagnostic and Treatment requirements. Presumptive transfer means a prompt transfer of the responsibility for the provision of, or arranging and payment for SMHS from the county of original jurisdiction to the county in which the foster child resides. EDC MH and EDC CWS are working on developing a procedure to ensure effective implementation of AB1299
- The Quality Assurance/Utilization Review team is in the process of conducting a thorough audit of Day Rehabilitation services to ensure compliance with regulatory requirements.

### TAY DBT/FEP Program (Sabrina Owen and Lesly Van Sloten)

#### Tahoe

- TAY DBT: Gearing up for the new school year Anastasia will be meeting with counseling staff and teachers from both campuses to identify both interested TAY to be trained as peer skills coaches and at-risk TAY that would benefit from learning DBT skills.
- TAY FEP: Anastasia has four FEP clients, consistent engagement and substance use continued to be the largest barriers to effective intervention. Anastasia will continue to educate staff (both high school and college) to help identify early signs of mental health issues, with an emphasis on FEP, and how to refer students and their families for an assessment and treatment.

#### Placerville

- TAY-DBT: Program will begin again in the new school year sometime around the third week of September. The Mental Health Clinician position in this program has been vacant as of July 1, 2017, however, Independent High School and Community Charter School have been on summer break. A qualified Mental health Clinician has been identified to backfill this vacancy.
- TAY-FEP: Currently there is one client in this program and Kris Vandenbrink, Mental Health Clinician, is providing FEP services to the client. Client is currently not engaged in the program.

## ADULT OUTPATIENT GROUP SCHEDULES

### WS Adult Outpatient Services

<b>Monday</b>	
BHC/Wellness - Check In Group	10:30 am - 11:30 am
Manage your Emotions Group	1:00 pm - 2:00 pm
Current Events Group	1:15 pm - 2:00 pm (Wellness/Peer Led)
Exercise Group	2:00 pm - 3:00 pm (Wellness/Peer Led)
Stress Reduction	3:00 pm - 4:00 pm
Communication Skills	3:00 pm - 4:00 pm (Wellness)
Play a Game Group	3:00 pm - 4:00 pm (Wellness)
Music Group	3:00 pm - 4:00 pm (Staff and Peer Led)
<b>Tuesday</b>	
Country Line Dancing Lessons	12:00 – 1:00pm (Wellness)
Current Events Group	1:15 pm - 2:00 pm (Wellness/Peer Led)
Women's Co-Occurring Recovery Group	1:15 pm - 2:45 pm (ADP)
Art Group with Jan from NAMI	1:30 pm - 3:00 pm (Wellness)
Healthy Pleasures	1:30 pm - 2:30 pm (Wellness)
Job Connections Group	1:30 pm - 3:30 pm (Wellness)
Smoking Cessation	3:00 pm - 4:00 pm (Wellness)
<b>Wednesday</b>	
DBT Skills Group - Skills Training	10:00 am - 12:00 pm
SAMHSA - Medication Education	11:00 am - 12:00 pm (On Hold)
Transitional Housing Independent Living Skills	12:00 pm - 1:00 pm
Dual Recovery Anonymous - Peer Support Group	1:00 pm - 2:00 pm (Wellness)
Current Events Group	1:15 pm - 2:00 pm (Wellness/Peer Led)
Self-Care/ADLS Group	1:30 pm - 3:30 pm (Wellness)
Therapeutic Music Group	2:00 pm - 3:00 pm (Wellness)
Anger Management Group	2:00 pm - 3:00 pm
Physical Activity (1 mile walk)	3:00 pm - 3:45 pm (Wellness)
MH Peer Leadership Academy	3:00 pm - 4:00 pm, monthly, (Wellness)
<b>Thursday</b>	
Country Line Dancing Lessons	12:00 – 1:00 pm (Wellness)
Current Events Group	1:15 pm - 2:00 pm (Wellness/Peer Led)
Women's Co-Occurring Recovery Group	1:15 pm - 2:45 pm (Seeking Safety, ADP)
Healthy Pleasures	1:30 pm - 2:30 pm (Wellness)
Get Fresh Nutrition Classes - EDC PH	1:30 pm - 2:30 pm (Wellness)
Nutrition/Meal Planning group	In the T-houses on a rotating schedule
Crafts with the Textile Division	2:00 - 4:00 pm (Peer Led)
Life Skills Group	3:00 pm - 4:00 pm (Wellness/Peer Led)
Gardening Group 2x/Month	3:00 pm - 4:00pm

<b>Friday</b>	
DBT Group - Skills Training	10:00 am - 12:00 pm
Men's Co-Occurring Recovery Group	10:00 am - 12:00 pm (ADP)
Current Events Group	1:15 pm - 2:00 pm (Wellness/Peer Led)
Ted Talks and Cinema Club	1:30 pm - 3:30 pm (Wellness)
DBT Group - Skills Training	1:30 pm - 2:30 pm
Music Appreciation Group	2:00 pm - 3:00 pm (Wellness)
Mindfulness Group	2:45 pm - 3:30 pm (Wellness)

## SLT Adult Outpatient Services

<b>Monday</b>	
Seeking Safety (Co-Occurring)	11:00 am - 12:00 pm (ADP)
DBT - Skill Building	1:30 pm - 2:30 pm (Wellness)
TED Talks - Information & Conversation	3:00 pm – 3:30 pm (Wellness)
Current Events Discussion	3:35 pm – 4:00 pm (Wellness)
<b>Tuesday</b>	
DBT - Distress Tolerance	1:00 pm - 2:30 pm
Anger Management	1:30 pm - 2:30 pm (Wellness)
Recovery through Art or Peer Leadership	3:00 pm - 3:30 pm (Wellness)
Just One Thing (Mindfulness)	3:35 pm - 4:00 pm (Wellness)
<b>Wednesday</b>	
Women's Wellness	10:30 am - 11:30 am
Health Awareness/Cooking	1:30 pm - 2:00 pm (Wellness)
Refuge Recovery	3:00 pm – 3:30 pm (Wellness)
Healthy Relationship Skills	3:35 pm – 4:00 pm (Wellness)
<b>Thursday</b>	
Co-occurring Women's group	10:30 am-12pm (ADP)
Community Excursions (active clients only)	1:00 pm - 4:00 pm (Wellness)
Movement Mindfulness	1:30 pm - 2:30 pm (Wellness)
Stress Management	3:00 pm - 3:30 pm (Wellness)
Social Awareness	3:35 pm - 4:00 pm (Wellness)
<b>Friday</b>	
BHC Group	12:30 pm - 1:00 pm
Volunteering (active clients only)	1:00 pm - 4:00pm (Wellness)
Recovery Through Art	1:30 pm - 2:30 pm (Wellness)
Paths to Recovery (Book Study)	3:00 pm - 3:30 pm (Wellness)
Leisure Skills	3:00 pm – 3:30 pm (Wellness)
Recovery Through Music	3:35 pm – 4:00 pm (Wellness)
Men's Wellness	2:30 pm - 4:00 pm (on hold pending hiring of new staff)

<b>Saturday</b>	
Friends 'n Fitness	11:00 am - 12:30 pm

## INITIALS & DEFINITIONS

Initials	Definition
AB	Assembly Bill
ACEs	Adverse Childhood Experiences
ADL	Activities of Daily Living
ADP	Alcohol and Drug Programs
AOT	Assisted Outpatient Treatment
APS	Adult Protective Services
ARF	Adult Residential Facility
B&C	Board and Care
BHC	Behavioral Health Court
BHD	Behavioral Health Division (formerly the Mental Health Division)
BOMUSD	Black Oak Mine Unified School District
BSCC	Board of State and Community Corrections
CalMHSA	California Mental Health Services Authority
CBHDA	California Behavioral Health Directors Association
CBO	Community Based Organization
CBT	Cognitive Behavior Therapy
CCC	Community Corrections Center
CCP	Community Corrections Partnership
CCR	Continuum of Care Reform
CFMG	California Forensic Medical Group
CFT	Children and Family Teams
CFTN	Capital Facilities and Technology Needs
CHP	California Highway Patrol
CIT	Crisis Intervention Team
CMS	Centers for Medicare & Medicaid Services
CPP	Community Planning Process
CPS	Child Protection Services
CPT	California Psychiatric Transitions
CSS	Community Services and Supports
DBT	Dialectical Behavior Therapy
DHCS	Department of Health Care Services (California)
DMC-ODS	Drug Medi-Cal Organized Delivery System
Dx	Diagnosis
ED	Emergency Department
EDC	El Dorado County
EDCMH	El Dorado County Mental Health
EDCSO	El Dorado County Sheriff's Office
EDSO	El Dorado Sheriff's Office
EDCVC	El Dorado Community Vision Coalition
EH	Extra Help
EPSDT	Early and Periodic Screening, Diagnosis and Treatment
EQRO	External Quality Review Organization
ER	Emergency Room

FEP	First Episode Psychosis
FSP	Full Service Partnership
FTE	Full-Time Equivalent
FY	Fiscal Year
HHSA	Health and Human Services Agency
HOT	Homeless Outreach Team (operated by EDSO)
ICC	Intensive Care Coordination
ICM	Intensive Case Management
IHBS	Intensive Home-Based Services
IMD	Institution for Mental Disease (facility)
ITWS	Information Technology Web Services
Katie A.	<i>Katie A. vs. Bonta</i> Lawsuit and/or resulting programs/services
LL	Laura's Law
LOCUS	Level of Care Utilization System
LPS	Lanterman Petris Short
LT	Limited Term
LTCC	Lake Tahoe Community College
MDT	Multi-Disciplinary Team
MH	Mental Health
MHD	Mental Health Division
M-F	Monday through Friday
MHOAC	Mental Health Oversight and Accountability Commission
MHRC	Mental Health Rehabilitation Center (facility)
MHSA	Mental Health Services Act
MHW	Mental Health Worker
MIOCR	Mentally Ill Offender Crime Reduction
MOA	Medical Office Assistant
NM	New Morning Youth & Family
OP	Outpatient
PA	Physician Assistant
PATH	Projects for Assistance in Transition from Homelessness
PCP	Primary Care Physician
PD	Police Department
PEI	Prevention and Early Intervention
PES	Psychiatric Emergency Services
PG	Public Guardian
PHF	Psychiatric Health Facility
PIP	Primary Intervention Program or Program Improvement Plan
POC	Plan of Correction
PPD	Placerville Police Department
QI	Quality Improvement
QI/UR	Quality Improvement/Utilization Review
QIC	Quality Improvement Committee
RIF	Reduction in Force
RFI	Request for Information
RFP	Request for Proposal
ROC	Restoration of Competence
RV	Remi Vista
SAMHSA	Substance Abuse and Mental Health Services Administration
SB	Senate Bill
SCF	Sierra Child & Family
SLT	South Lake Tahoe
SLTPD	South Lake Tahoe Police Department

SO	Sheriff's Office
STHS	South Tahoe High School
STRTP	Short-Term Residential Therapeutic Program
SV	Summitview Child & Family
SYS	Stanford Youth Solutions
T-House	Transitional Housing
TAY	Transitional Age Youth
TBD	To Be Determined
TFC	Therapeutic Foster Care
TYFS	Tahoe Youth and Family Services
Tx	Treatment
TY	Tahoe Youth & Family
UR	Utilization Review
WET	Workforce Education and Training
WIA	Workforce Investment Act
WOIA	Workforce Innovations and Opportunities Act
WS	West Slope