

Behavioral Health Division Update Mental Health Commission September 27, 2017 Meeting

ASSISTANT & DEPUTY DIRECTOR UPDATES

(Katy Eckert & Jamie Samboceti)

- HHSA had a successful Staff Open House recently. Although it was not held in August, I didn't want to miss the opportunity to give you this information. It was a full day, two sessions, to ensure all staff could attend. The day was filled with enthusiasm, energy, hope, gratitude, and a collection of materials, presentations both table/board style and verbal. Our two components of Behavioral Health provided two brief verbal presentations to our staff and full table presentations. It will be exciting to move this information to the community in the future.
- The Board of Supervisors also recently agreed with a 5-0 vote to move forward with the Jail Expansion Project. This will allow HHSA to support the ReEntry Program for folks preparing to exit the jail into our community. This is an exciting endeavor to assist in the prevention of potential clients from dropping through the cracks before getting connected to services.
- Regarding our newest program: We eagerly await the MOU (with our Contracts Unit) with EDC Sheriff's Office to support the CIT Mobile Crisis Unit. We are excited to make a difference in the number of individuals who enter the ED unnecessarily and to provide early interventions to those having a crisis in the community. We will keep you posted.
- As of August, Crisis Staff is no longer responding to the Emergency Departments at Barton and Marshall during the overnight hours. As you are aware, we have made multiple attempts for the last 2.5 years to get coverage for this very difficult service with no positive outcome. The last attempt was to partner with our Hospitals to share the cost of an overnight Social Worker. Marshall and Barton after looking at the data, could not justify paying even half of an employee to do the work. We had no alternative, however are working closely with our Hospitals to complete 5150 Training for MD's who are willing and eager to write and drop holds as appropriate. Barton has taken the lead in this area. We will continue to work with Marshall Staff to determine training needs. Both Hospitals are using the 23 hour hold allowable by medical staff to ensure folks are safe until crisis can complete their assessment. We will continue to monitor this issue.
- We continue to struggle to hire needed Clinical positions, which is causing some burnout of our current staff. In our last recruitment, we were only able to secure one Clinician out of 4. We continue to not be competitive with our neighboring Counties, or with our local Contract Providers when it comes to compensation. We are trying to think out of the box in ways that will encourage people not just to come to El Dorado County for employment, but to stay when they become licensed. More to come.

EL DORADO COUNTY BEHAVIORAL HEALTH DIVISION STAFFING:

- **New Hires:**
 - Paul Fierro, MH Clinician SLT
 - Heather Longo, Sr. Department Analyst (MHSA Coordinator)
- **Promotions:**
 - None
- **Recruitments:**
 - Ongoing
 - Mental Health Clinicians WS (Access Team, ICM)
 - New
 - Administrative Technician WS (Utilization Review)
- **Separations:**
 - Labrini Kridzelis as of September 15, 2017
 - Lisa Konyecsni, Administrative Technician, as of September 30 (promoted into HHSA Administration and Fiscal Division)
- **Position Changes:**
 - Haley Turner and Elizabeth Fedor, MHW SLT have accepted F/T ICM positions

EL DORADO COUNTY BEHAVIORAL HEALTH FINANCIAL UPDATE:

Please refer to agenda item 7: "Update / Discussion on Behavioral Health Division's Budget".

CASELOAD AND NEW SERVICE REQUEST DATA

Unduplicated Caseload as of August 2017

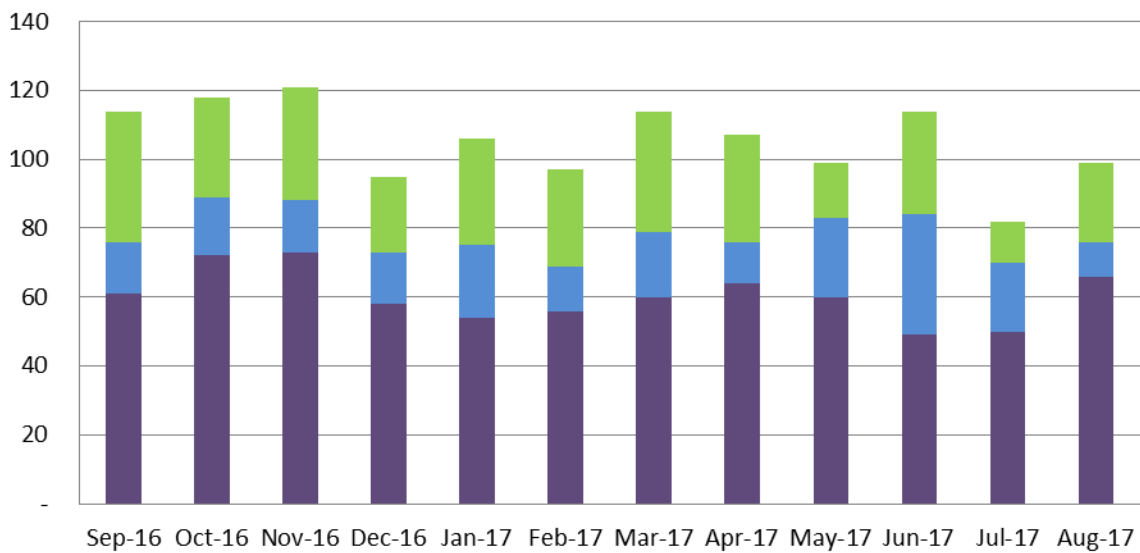
Children's Outpatient South Lake Tahoe	Clients	Children's Outpatient West Slope	Clients	Total
TAY	8	TAY	23	31
Clinic	2	Clinic	23	25
Contractor: Sierra Child & Family Services (SCF)	35	Contractor: Sierra Child & Family Services (SCF)	67	102
Contractor: Tahoe Youth & Family (TY)	4	n/a		4
		Contractor: Summitview (SV)	61	61
		Contractor: New Morning (NM)	19	19
		Contractor: Stanford Youth Solutions (SYS)	2	2
Subtotal Children's	49	Subtotal Children's	195	244

Adult Outpatient South Lake Tahoe	Clients	Adult Outpatient West Slope	Clients	Total
Clinic	45	Clinic	259	304
ICM/FSP	18	ICM/FSP	52	70
Subtotal Adults	63	Subtotal Adults	311	374

Total South Lake Tahoe	112	Total West Slope	506	618
-------------------------------	-----	-------------------------	-----	-----

New Service Request Trends

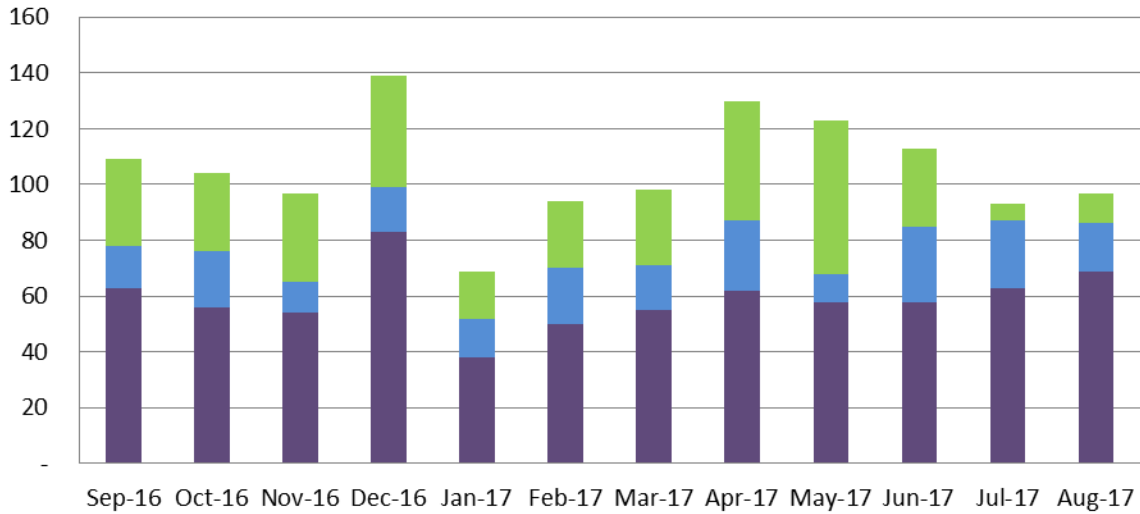
Prior 12 Month Period New Requests for Service



	Sep-16	Oct-16	Nov-16	Dec-16	Jan-17	Feb-17	Mar-17	Apr-17	May-17	Jun-17	Jul-17	Aug-17
Children	38	29	33	22	31	28	35	31	16	30	12	23
TAY	15	17	15	15	21	13	19	12	23	35	20	10
Adults	61	72	73	58	54	56	60	64	60	49	50	66

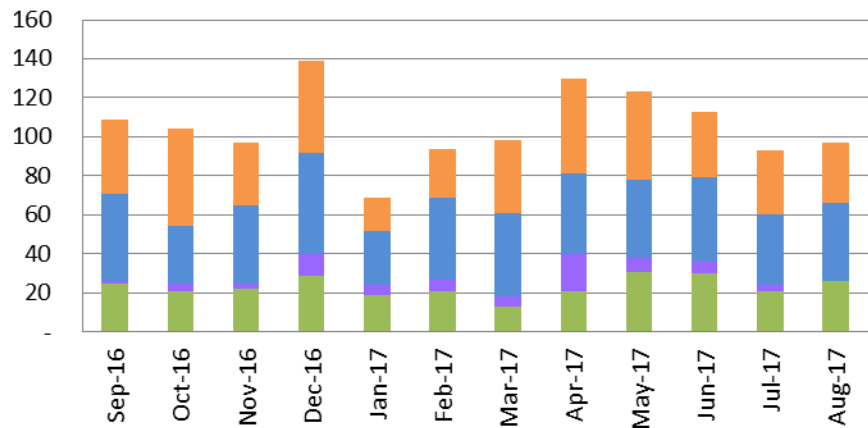
Discharged Service Request Trends

**Prior 12 Month Period Discharged Requests for Service
(by Age)**



	Sep-16	Oct-16	Nov-16	Dec-16	Jan-17	Feb-17	Mar-17	Apr-17	May-17	Jun-17	Jul-17	Aug-17
Children	31	28	32	40	17	24	27	43	55	28	6	11
TAY	15	20	11	16	14	20	16	25	10	27	24	17
Adult	63	56	54	83	38	50	55	62	58	58	63	69

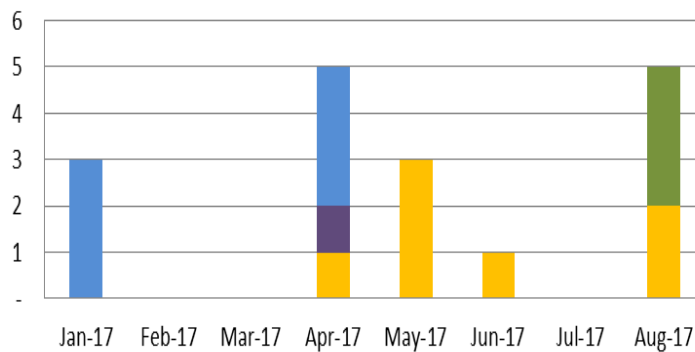
Prior 12 Month Period Discharged Requests for Service (by Disposition)



	Sep-16	Oct-16	Nov-16	Dec-16	Jan-17	Feb-17	Mar-17	Apr-17	May-17	Jun-17	Jul-17	Aug-17
Other	38	50	32	47	17	25	37	49	45	34	33	31
Does Not Meet Medical Necessity	45	29	40	52	28	42	43	41	40	43	36	40
To Other MH Provider	1	4	3	11	5	6	5	19	7	6	3	-
To BHD OP Services	25	21	22	29	19	21	13	21	31	30	21	26

Assisted Outpatient Treatment: (Rhapsody Flores)

Assisted Outpatient Treatment Referrals



	Jan-17	Feb-17	Mar-17	Apr-17	May-17	Jun-17	Jul-17	Aug-17
In Review	-	-	-	-	-	-	-	3
Could Not Locate	3	-	-	3	-	-	-	-
Did Not Meet AOT Criteria	-	-	-	1	-	-	-	-
Met AOT Criteria	-	-	-	1	3	1	-	2

Disposition of Referrals:

0 did not meet program criteria,
2 met initial program criteria,
0 individuals voluntarily accepted outpatient services,
0 individuals to proceed with the AOT process,
3 applications in review process

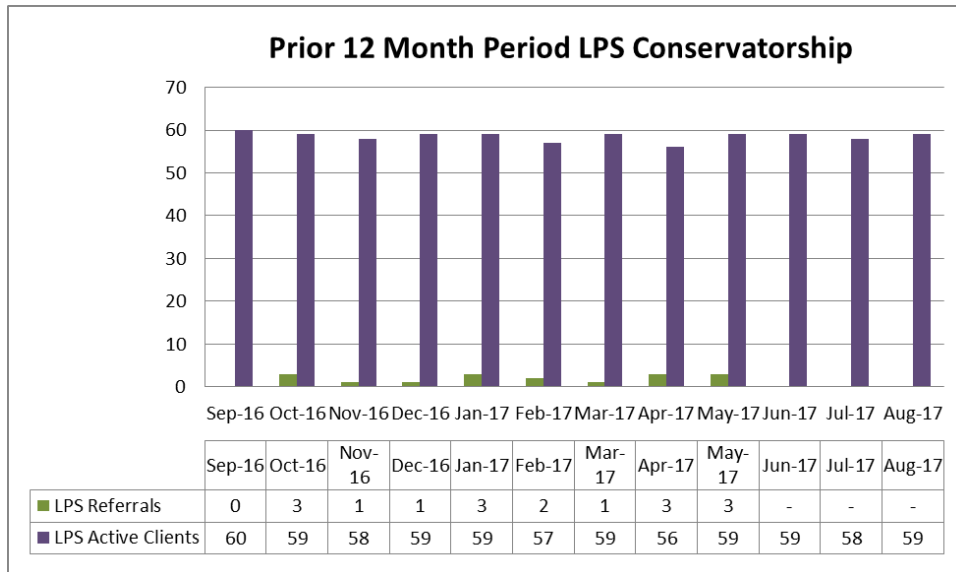
Discharged AOT clients:

0 clients discharged:
0 to a lower level of service,
0 out of services

Three referrals were received - 2 WS and 1 SLT. SLT client was willing to accept services. Attempts are being made to contact the 2 WS

clients.

LPS Conservatorship: (Rhapsody Flores)



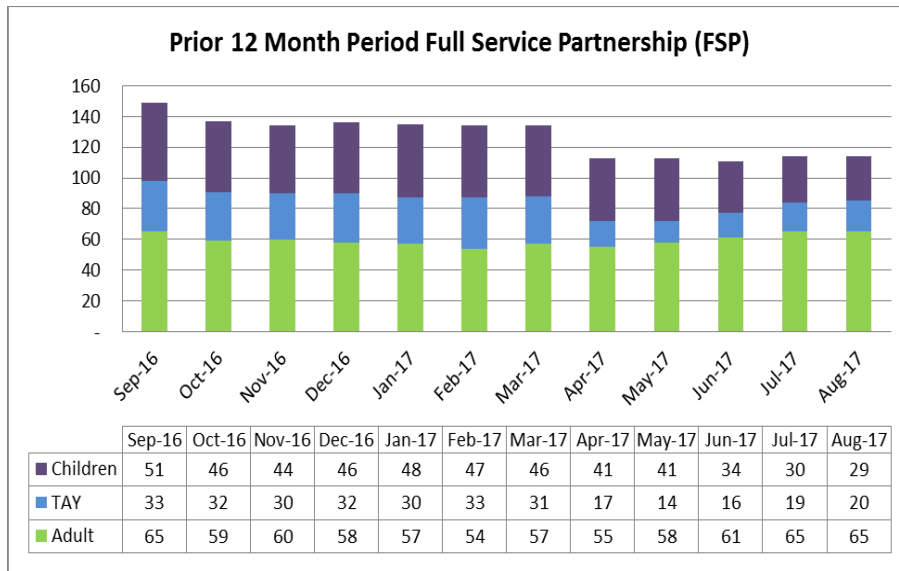
LSP Active Clients:

54 LPS Conservatorships
5 Temporary Conservatorships

LPS Terminations:

1 LPS Terminations
0 Pending LPS Terminations

Full Service Partnership (FSP) and Intensive Case Management (ICM) (Rhapsody Flores and Karen Naegeli)



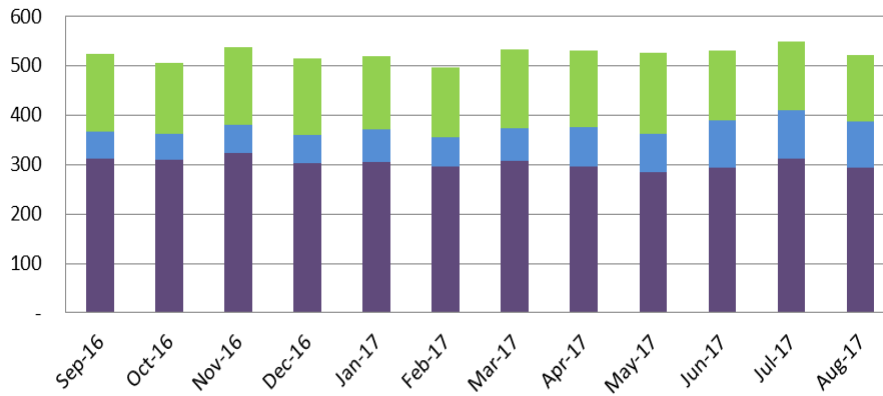
Intensive Case Management

- West Slope: Serving 39 clients
- SLT: Serving 17 clients

Outpatient Services (excludes FSP and Out-of-County Placements)

Prior 12 Month Period Outpatient Clients

(Excludes FSP and Out-of-County Clients)



	Sep-16	Oct-16	Nov-16	Dec-16	Jan-17	Feb-17	Mar-17	Apr-17	May-17	Jun-17	Jul-17	Aug-17
Children	156	143	158	155	148	141	159	156	165	141	137	133
TAY	55	53	57	58	67	59	66	80	77	96	98	95
Adult	312	309	323	302	305	296	307	295	284	294	313	293

May discharges:

9 Children discharged from all services

1 Tahoe
7 West Slope
1 Out of County

11 TAY discharged from all services

1 Tahoe
10 West Slope
0 Out of County

21 Adults discharged from all services

2 Tahoe
19 West Slope
0 Out of County

PLACEMENTS

Board and Care / IMDs / Secure Placements (Rhapsody Flores)

- 26 IMD beds - Crestwood/Canyon Manor/California Psychiatric Transitions (CPT)
- 2 State Hospital
- 5 Enhanced Board and Care beds including Willow Glen & Silver Ridge
- 22 Board and Care - Sacramento & Galt (including Grace Home)
- **Total:**
 - 51 Out of County Placements
 - 4 In County Placements (Silver Ridge)

Transitions Treatment Program / MIOCR (Rhapsody Flores / Sabrina Owen)

- **WS:** 13 of 15 beds filled: 2 openings & 1 pending opening
- **SLT:** 11 of 12 beds filled:
 - T1 1 opening
 - T2 (MIOCR) 0 openings

Permanent Supportive Housing (Ren Scammon / Sabrina Owen)

Trailside Terrace

Clients receive services from the Wellness and Recovery team or from community based supports

- 6 of 6 units occupied
- Wait List:
 - 1 bedroom: 12
 - 2 bedroom: 5
 - 3 bedroom: 0

The Aspens at South Lake

Clients receive ICM team coverage

- 6 of 6 units occupied
- Wait List: 2 known
 - The Aspens is a floating unit configuration based on household size rather than a specific number of apartments for each number of bedrooms

Psychiatric Health Facility (Jamie Samboceti)

- There were 27 Admissions in August, 2017; 21 Admissions were El Dorado County residents and 6 were Out of County residents.
- There were 20 El Dorado County residents discharged in August, 2017; 15 to Home with Support, 0 to Home without support, 0 MHRC, 0 Board and Care, 3 to ICM T-House, 2 to Shelter, 0 to Other, and 0 to Emergency Department.
- Upon discharge, 17 El Dorado County residents were insured and 3 El Dorado County residents were pending insurance.
- During the month of August, there were 0 Seclusion Episodes, 0 Physical Restraint

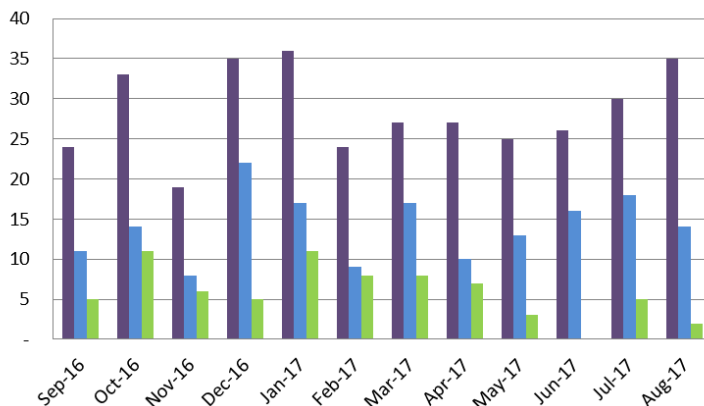
Episodes (0 minutes), 0 Assaults (0 clients), 0 Elopements, 0 Medication Errors (0 medication errors with no patient involvement), Client Surveys 14

- There were 8 denials of El Dorado County referrals: [reasons for denial: non ambulatory, Developmental DO as primary, on-going medical needs beyond staff capability, placed at an alternative facility, primary diagnosis of Substance Abuse DO, patient was a minor.]
- Average daily census was 11 (range 7 - 13), with 9 average length of stay of days.

CRISIS SERVICES

Psychiatric Emergency Services (PES) (Sabrina Owen and Angie Larrigan)

Prior 12 Month Period Psychiatric Emergency Services - SLT



	Sep-16	Oct-16	Nov-16	Dec-16	Jan-17	Feb-17	Mar-17	Apr-17	May-17	Jun-17	Jul-17	Aug-17
■ Crisis Assessments	24	33	19	35	36	24	27	27	25	26	30	35
■ Hospitalizations	11	14	8	22	17	9	17	10	13	16	18	14
■ Referrals to Substance Use Treatment	5	11	6	5	11	8	8	7	3	-	5	2

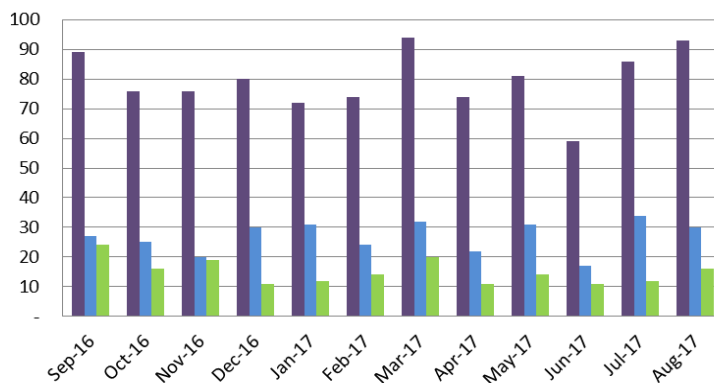
Crisis Assessments for Open Clients:

- SLT: 8
- West Slope: 11

Hospitalizations of Open Clients

- SLT: 4
- West Slope: 7

Prior 12 Month Period Psychiatric Emergency Services - WS



	Sep-16	Oct-16	Nov-16	Dec-16	Jan-17	Feb-17	Mar-17	Apr-17	May-17	Jun-17	Jul-17	Aug-17
■ Crisis Assessments	89	76	76	80	72	74	94	74	81	59	86	93
■ Hospitalizations	27	25	20	30	31	24	32	22	31	17	34	30
■ Referrals to Substance Use Treatment	24	16	19	11	12	14	20	11	14	11	12	16

- **SLT:** During the hours of 11:00 pm to 8:00 am, the PES staff are available by telephone but do not respond to Barton Hospital in person.
- **WS:** During the hours of 12:00 am to 8:00 am, the PES staff are available by telephone but do not respond to Marshall Hospital in person.

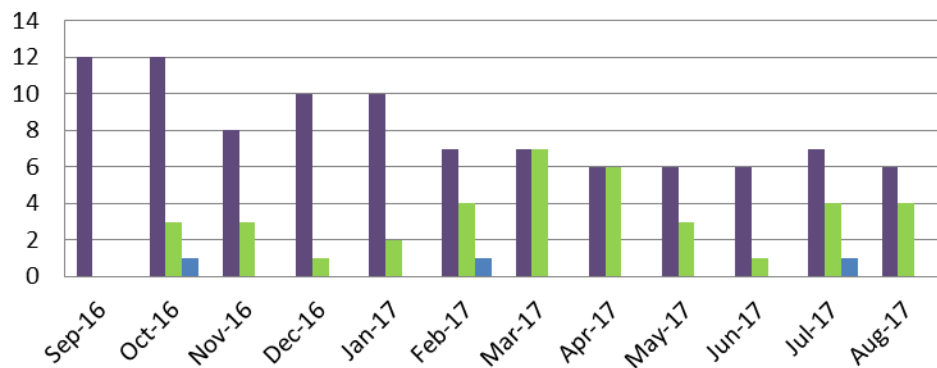
Crisis Intervention Teams (CIT) (Angie Larrigan and Sabrina Owen)

- **SLT:** MDT was canceled by the EDSO, next meeting will be held in September.
- **WS:** The August CIT meeting was attended by EDC Jail and EDCMH. Despite many members absent from the meeting, much information sharing about strengths and barriers present in the two systems took place.
- Ongoing collaboration between CIT members take place several times per week to provide appropriate interventions for those we serve in our community.

JUSTICE SERVICES

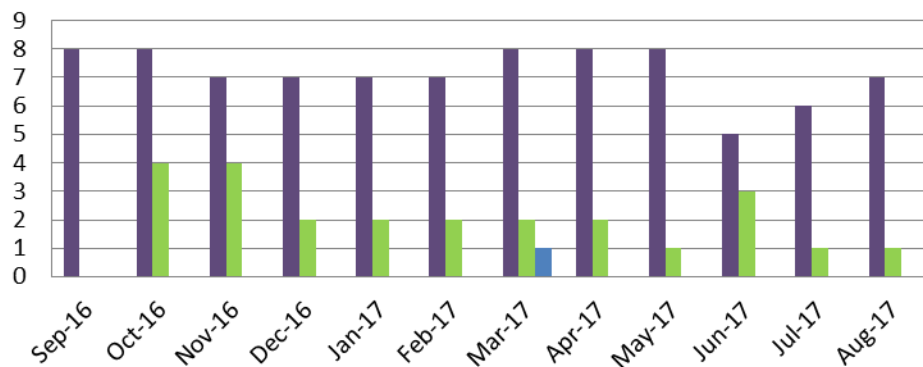
Behavioral Health Court (John Schumacher)

Prior 12 Month Period Behavioral Health Court - SLT



	Sep-16	Oct-16	Nov-16	Dec-16	Jan-17	Feb-17	Mar-17	Apr-17	May-17	Jun-17	Jul-17	Aug-17
■ Active Participants	12	12	8	10	10	7	7	6	6	6	7	6
■ Sober Living	0	3	3	1	2	4	7	6	3	1	4	4
■ Residential Substance Use	0	1	0	0	0	1	0	0	0	0	1	0

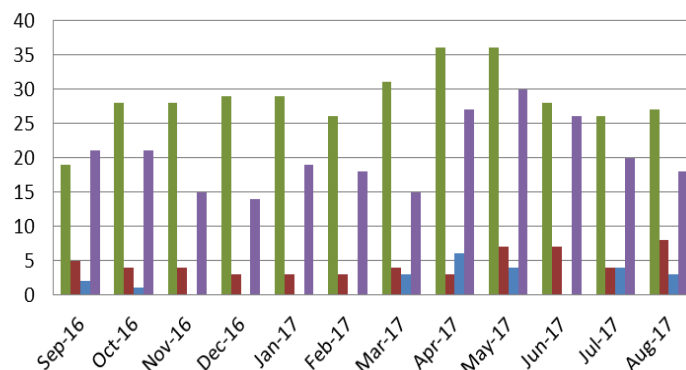
Prior 12 Month Period Behavioral Health Court - WS



	Sep-16	Oct-16	Nov-16	Dec-16	Jan-17	Feb-17	Mar-17	Apr-17	May-17	Jun-17	Jul-17	Aug-17
Active Participants	8	8	7	7	7	7	8	8	8	5	6	7
Sober Living	0	4	4	2	2	2	2	2	1	3	1	1
Residential Substance Use	0	0	0	0	0	0	1	0	0	0	0	0

AB 109 (John Schumacher)

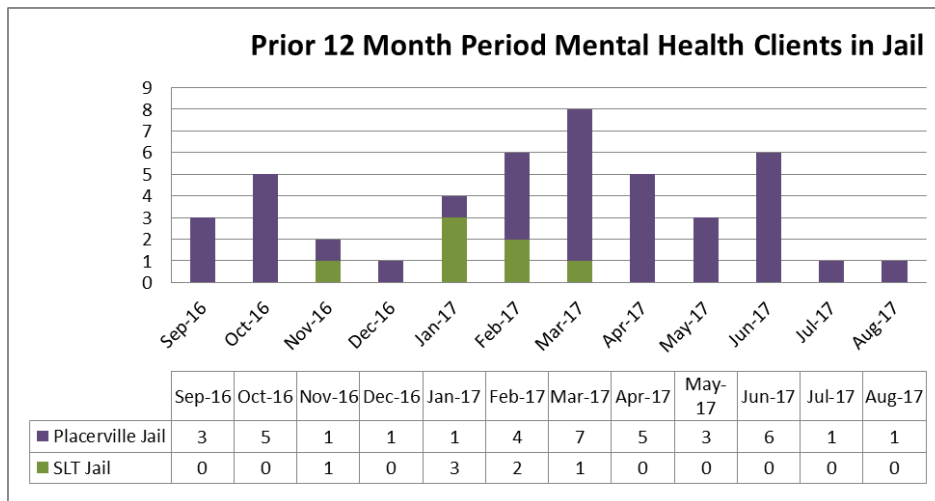
Prior 12 Month Period AB 109 Client Services at the Community Corrections Center



	Sep-16	Oct-16	Nov-16	Dec-16	Jan-17	Feb-17	Mar-17	Apr-17	May-17	Jun-17	Jul-17	Aug-17
Substance Use Treatment @ CCC	19	28	28	29	29	26	31	36	36	28	26	27
Sober Living	5	4	4	3	3	3	4	3	7	7	4	8
Residential Substance Use	2	1	0	0	0	0	3	6	4	-	4	3
Mental Health Services	21	21	15	14	19	18	15	27	30	26	20	18

- 5 clients are receiving Substance Use Education services in the South Lake Tahoe jail. *Moral Reconation Therapy/SUD treatment on hold and will resume within 30 days. The new Health Program Specialist recently completed training for MRT and is preparing to start services.*
- 19 clients are receiving Substance Use Disorder treatment in Placerville Jail.
- 14 client is receiving treatment from a contracted community provider in SLT
- 9 clients are receiving treatment from a contracted community provider in Placerville

Mental Health Clients in Jail (Jamie Samboceti)



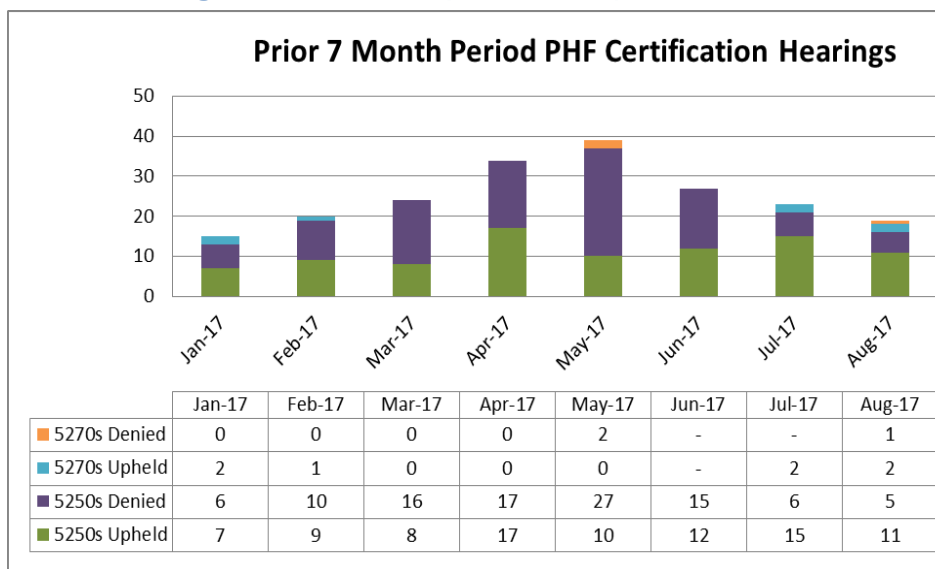
Count of clients that were open to Mental Health services at the time of their incarceration in the Placerville or SLT Jails only.

Restoration of Competency (Rhapsody Flores)

- 0 Outpatient ROC referrals; 0 Jail ROC referral
- 0 client receiving ROC Outpatient services

QUALITY ASSURANCE & PATIENTS' RIGHTS

Patients' Rights Advocate (Dani Mills)



Certification hearings are held at the PHF on Mondays and Thursdays.

Quality Improvement/Utilization Review (Ren Scammon)

- The next Quality Improvement Committee meeting has been scheduled for October 25, 2017.

Grievances/Appeals/Hearings (Ren Scammon)

- New regulations specify the following time frames for resolution of Grievance, Expedited Appeals and Appeals (42 CFR Part 438):
 - Grievances: Resolution within 90 calendar days from the date of receipt
 - Expedited Appeals: Resolution within 72 hours after receipt of the appeal
 - Appeals: Resolution within 30 calendar days from the date of receipt

Month Filed	Month Completed	Type	Topic	Location	Outcomes (Appeals / Hearings Only)
05-2017		Grievance	Quality of Care: Staff Behavior Concern	WS PES	
06-2017	08-2017	Grievance	Quality of Care: Staff Behavior Concern	PHF	
08-2017		Grievance	Quality of Care: Staff Behavior Concern	PHF	
08-2017		Grievance	Quality of Care: Staff Behavior Concern	PHF	
09-2017		Grievance	Quality of Care: Staff Behavior Concern	WS Adult	
09-19-2017	09-20-2017	Expedited Appeal	Denial for Services	WS Adult	Decision overturned; individual opened to services

PERFORMANCE IMPROVEMENT METRICS (reported quarterly)

Next Report Period: Quarter 1st (July through September 2017)

Reporting Month: Oct 2017

PROGRAM ACTIVITY UPDATES

MENTAL HEALTH SERVICES ACT (MHSA) (Ren Scammon/Heather Long/Tami Smith)

- Heather Longo has joined the MHSA Team as a Sr. Department Analyst, and is the new MHSA Coordinator. Heather has been with HHSA since 2007, and since 2012 she has been in the Contracts Unit at Briw Road. Heather has extensive background in researching regulations and program requirements, drafting complex documents, collaborating with various County departments and community providers, and providing direct client services.
- The Community Planning Process will be starting in October. Please refer to the agenda item 9: "Mental Health Services Act Community Planning Process for Fiscal Year 2018/19".

OUTPATIENT SERVICES

(Sabrina Owen and Karen Naegeli (SLT); Lesly VanSloten and Rhapsody Flores (WS))

Wellness Center August Activities:

Tahoe:

- Beach BBQ and recreational activities such as stand up paddle boarding.

West Slope:

- Unfortunately due to severe weather, we had to cancel two major events and reschedule them for September.
- We are moving forward with Peer Leadership in the Wellness Center. Currently approximately 14 peers are organizing their first major event scheduled for September 19th. The event will be a "Peer Appreciation BBQ". Peers will plan the entire event, (including: menu planning, shopping, food preparation, cooking, clean-up, and entertainment). During this event, staff will participate in an over-sight capacity only.

ICM - August Activities:

Tahoe:

- Taking full advantage of the beautiful Tahoe summer with nature walks, music on the beach and BBQs.

West Slope:

- TTP and ICM clients went fishing at Silver Lake and Union Valley
- Several ICM clients attended a free day at Crocker Art Museum
-

Children's Services (Angie Larrigan)

El Dorado County Behavioral Health Utilization Review team and Children's Specialty Mental Health Services providers continue to work with Child Welfare Services to enhance the efficiency of Children and Family Team meetings with a focus on providing unduplicated, effective and strategic meetings.

- HHSA continues to await guidelines for implementation of additional AB403 Continuum of Care Reform stages which have been anticipated to roll out between now and 2021.
- EDC MH is collaborating with EDC CWS to implement AB1299 Presumptive Transfer. At this time, EDC MH will continue to use the SAR process to ensure adequate tracking and treatment for out of County foster youth.
- The Quality Assurance/Utilization Review team is in the process of conducting a thorough audit of Day Rehabilitation services to ensure compliance with regulatory requirements.

TAY DBT/FEP Program (Sabrina Owen and Lesly VanSloten)

Tahoe

- TAY DBT: Already getting requests and referrals for DBT groups. Tallac group scheduled to begin September 11 and STHS to follow shortly.

- TAY FEP: Substance use and engagement continue to be the largest treatment Placerville

- TAY-DBT: Kate Hilbert will begin as the new TAY-DBT Clinician assigned to Independence High School and Charter Community High School on September 18th. On campus meetings with Principal and School Staff begin September 11th.
- TAY-FEP: Currently there are 2 clients in the FEP program. Kris Vandenbrink, MFT who transferred to AOP is still managing these two clients until Kate transfers over on September 11th.

ADULT OUTPATIENT GROUP SCHEDULES

WS Adult Outpatient Services

Monday	
BHC/Wellness - Check In Group	10:30 am - 11:30 am
Manage your Emotions Group	1:00 pm - 2:00 pm
Current Events Group	1:15 pm - 2:00 pm (Wellness/Peer Led)
Exercise Group	2:00 pm - 3:00 pm (Wellness/Peer Led)
Stress Reduction	3:00 pm - 4:00 pm
Communication Skills	3:00 pm - 4:00 pm (Wellness)
Play a Game Group	3:00 pm - 4:00 pm (Wellness)
Music Group	3:00 pm - 4:00 pm (Staff and Peer Led)
Tuesday	
Country Line Dancing Lessons	12:00 – 1:00pm (Wellness)
Current Events Group	1:15 pm - 2:00 pm (Wellness/Peer Led)
Women's Co-Occurring Recovery Group	1:15 pm - 2:45 pm (ADP)
Art Group with Jan from NAMI	1:30 pm - 3:00 pm (Wellness)
Healthy Pleasures	1:30 pm - 2:30 pm (Wellness)
Job Connections Group	1:30 pm - 3:30 pm (Wellness)
Smoking Cessation	3:00 pm - 4:00 pm (Wellness)
Wednesday	
DBT Skills Group - Skills Training	10:00 am - 12:00 pm
SAMHSA - Medication Education	11:00 am - 12:00 pm (On Hold)
Transitional Housing Independent Living Skills	12:00 pm - 1:00 pm
Dual Recovery Anonymous - Peer Support Group	1:00 pm - 2:00 pm (Wellness)
Current Events Group	1:15 pm - 2:00 pm (Wellness/Peer Led)
Self-Care/ADLS Group	1:30 pm - 3:30 pm (Wellness)
Therapeutic Music Group	2:00 pm - 3:00 pm (Wellness)
Anger Management Group	2:00 pm - 3:00 pm
Physical Activity (1 mile walk)	3:00 pm - 3:45 pm (Wellness)
MH Peer Leadership Academy	3:00 pm - 4:00 pm, monthly, (Wellness)
Thursday	
Country Line Dancing Lessons	12:00 – 1:00 pm (Wellness)
Current Events Group	1:15 pm - 2:00 pm (Wellness/Peer Led)
Women's Co-Occurring Recovery Group	1:15 pm - 2:45 pm (Seeking Safety, ADP)
Healthy Pleasures	1:30 pm - 2:30 pm (Wellness)
Get Fresh Nutrition Classes - EDC PH	1:30 pm - 2:30 pm (Wellness)
Nutrition/Meal Planning group	In the T-houses on a rotating schedule
Crafts with the Textile Division	2:00 - 4:00 pm (Peer Led)
Life Skills Group	3:00 pm - 4:00 pm (Wellness/Peer Led)
Gardening Group 2x/Month	3:00 pm - 4:00pm

Friday	
DBT Group - Skills Training	10:00 am - 12:00 pm
Men's Co-Occurring Recovery Group	10:00 am - 12:00 pm (ADP)
Current Events Group	1:15 pm - 2:00 pm (Wellness/Peer Led)
Ted Talks and Cinema Club	1:30 pm - 3:30 pm (Wellness)
DBT Group - Skills Training	1:30 pm - 2:30 pm
Music Appreciation Group	2:00 pm - 3:00 pm (Wellness)
Mindfulness Group	2:45 pm - 3:30 pm (Wellness)

SLT Adult Outpatient Services

Monday	
Seeking Safety (Co-Occurring)	11:00 am - 12:00 pm (ADP)
DBT - Skill Building	1:30 pm - 2:30 pm (Wellness)
TED Talks - Information & Conversation	3:00 pm – 3:30 pm (Wellness)
Current Events Discussion	3:35 pm – 4:00 pm (Wellness)
Tuesday	
DBT - Distress Tolerance	1:00 pm - 2:30 pm
Anger Management	1:30 pm - 2:30 pm (Wellness)
Recovery through Art or Peer Leadership	3:00 pm - 3:30 pm (Wellness)
Just One Thing (Mindfulness)	3:35 pm - 4:00 pm (Wellness)
Wednesday	
Women's Wellness	10:30 am - 11:30 am
Health Awareness/Cooking	1:30 pm - 2:00 pm (Wellness)
Refuge Recovery	3:00 pm – 3:30 pm (Wellness)
Healthy Relationship Skills	3:35 pm – 4:00 pm (Wellness)
Thursday	
Co-occurring Women's group	10:30 am-12pm (ADP)
Community Excursions (active clients only)	1:00 pm - 4:00 pm (Wellness)
Movement Mindfulness	1:30 pm - 2:30 pm (Wellness)
Stress Management	3:00 pm - 3:30 pm (Wellness)
Social Awareness	3:35 pm - 4:00 pm (Wellness)
Friday	
BHC Group	12:30 pm - 1:00 pm
Volunteering (active clients only)	1:00 pm - 4:00pm (Wellness)
Recovery Through Art	1:30 pm - 2:30 pm (Wellness)
Paths to Recovery (Book Study)	3:00 pm - 3:30 pm (Wellness)
Leisure Skills	3:00 pm – 3:30 pm (Wellness)
Recovery Through Music	3:35 pm – 4:00 pm (Wellness)
Men's Wellness	2:30 pm - 4:00 pm (on hold pending hiring of new staff)

Saturday	
Friends 'n Fitness	11:00 am - 12:30 pm

INITIALS & DEFINITIONS

Initials	Definition
AB	Assembly Bill
ACEs	Adverse Childhood Experiences
ADL	Activities of Daily Living
ADP	Alcohol and Drug Programs
AOT	Assisted Outpatient Treatment
APS	Adult Protective Services
ARF	Adult Residential Facility
B&C	Board and Care
BHC	Behavioral Health Court
BHD	Behavioral Health Division (formerly the Mental Health Division)
BOMUSD	Black Oak Mine Unified School District
BSCC	Board of State and Community Corrections
CalMHSA	California Mental Health Services Authority
CBHDA	California Behavioral Health Directors Association
CBO	Community Based Organization
CBT	Cognitive Behavior Therapy
CCC	Community Corrections Center
CCP	Community Corrections Partnership
CCR	Continuum of Care Reform
CFMG	California Forensic Medical Group
CFR	Code of Federal Regulations
CFT	Children and Family Teams
CFTN	Capital Facilities and Technology Needs
CHP	California Highway Patrol
CIT	Crisis Intervention Team
CMS	Centers for Medicare & Medicaid Services
CPP	Community Planning Process
CPS	Child Protection Services
CPT	California Psychiatric Transitions
CSS	Community Services and Supports
DBT	Dialectical Behavior Therapy
DHCS	Department of Health Care Services (California)
DMC-ODS	Drug Medi-Cal Organized Delivery System
Dx	Diagnosis
ED	Emergency Department
EDC	El Dorado County
EDCMH	El Dorado County Mental Health
EDCSO	El Dorado County Sheriff's Office
EDSO	El Dorado Sheriff's Office
EDCVC	El Dorado Community Vision Coalition
EH	Extra Help
EPSDT	Early and Periodic Screening, Diagnosis and Treatment
EQRO	External Quality Review Organization
ER	Emergency Room
FEP	First Episode Psychosis
FSP	Full Service Partnership
FTE	Full-Time Equivalent
FY	Fiscal Year
HHSA	Health and Human Services Agency

HOT	Homeless Outreach Team
ICC	Intensive Care Coordination
ICM	Intensive Case Management
IHBS	Intensive Home-Based Services
IMD	Institution for Mental Disease (facility)
ITWS	Information Technology Web Services
Katie A.	<i>Katie A. vs. Bonta</i> Lawsuit and/or resulting programs/services
LL	Laura's Law
LOCUS	Level of Care Utilization System
LPS	Lanterman Petris Short
LT	Limited Term
LTCC	Lake Tahoe Community College
MDT	Multi-Disciplinary Team
MH	Mental Health
MHD	Mental Health Division
M-F	Monday through Friday
MHOAC	Mental Health Oversight and Accountability Commission
MHRC	Mental Health Rehabilitation Center (facility)
MHSA	Mental Health Services Act
MHW	Mental Health Worker
MIOCR	Mentally Ill Offender Crime Reduction
MOA	Medical Office Assistant
NM	New Morning Youth & Family
OP	Outpatient
PA	Physician Assistant
PATH	Projects for Assistance in Transition from Homelessness
PCP	Primary Care Physician
PD	Police Department
PEI	Prevention and Early Intervention
PES	Psychiatric Emergency Services
PG	Public Guardian
PHF	Psychiatric Health Facility
PIP	Primary Intervention Program or Program Improvement Plan
POC	Plan of Correction
PPD	Placerville Police Department
QI	Quality Improvement
QI/UR	Quality Improvement/Utilization Review
QIC	Quality Improvement Committee
RIF	Reduction in Force
RFI	Request for Information
RFP	Request for Proposal
ROC	Restoration of Competence
RV	Remi Vista
SAMHSA	Substance Abuse and Mental Health Services Administration
SB	Senate Bill
SCF	Sierra Child & Family
SLT	South Lake Tahoe
SLTPD	South Lake Tahoe Police Department
SO	Sheriff's Office
STHS	South Tahoe High School
STRTP	Short-Term Residential Therapeutic Program
SV	Summitview Child & Family
SYS	Stanford Youth Solutions

T-House	Transitional Housing
TAY	Transitional Age Youth
TBD	To Be Determined
TFC	Therapeutic Foster Care
TYFS	Tahoe Youth and Family Services
Tx	Treatment
TY	Tahoe Youth & Family
UR	Utilization Review
WET	Workforce Education and Training
WIA	Workforce Investment Act
WOIA	Workforce Innovations and Opportunities Act
WS	West Slope