

**Behavioral Health Division Update
Mental Health Commission
October 25, 2017 Meeting**

ASSISTANT & DEPUTY DIRECTOR UPDATES

(Katy Eckert & Jamie Samboceti)

- Service Integration continues to build! The Assistant Director for the Child and Youth System of Care has been selected. Congratulations on the promotion of Leslie Griffith, who comes from the Child Welfare Services Unit. Updates on the Child and Youth System of Care will be provided as the Team and Services are identified. Meetings are about to begin to identify all of the parts and pieces of this System of Care. Behavioral Health is at the table.
- The Adult System of Care Leadership Team continues to gain education on the services available from each area of Health and Human Services Agency. We have completed training on Mental Health, the Substance Use Disorders Program and Senior Services. Over the next few months we will complete the educational training with presentations from In-Home Supportive Services, Adult Protective Services, Public Guardian, Behavioral Health Division Crisis and Access, and MHSA. To better inform all of our staff in the System of Care, presentations will move to line staff in each of the units. A fully informed staff means no wrong door for residents of El Dorado County.
- We continue to identify and address the gaps in service on both slopes, but specifically in South Lake Tahoe. We are reaching out to service providers to assist us in identifying what can be done to support the community and their service needs. Stay tuned!
- Representatives from Behavioral Health continue to meet regularly with many partners and participate in multiple collaboratives/cooperatives to address community needs, program needs, gaps in services, service integration, and integration options for the Adults System of Care. These meetings include, but are not limited to:
 - Managed Care Plans: Anthem Blue Cross, California Health and Wellness, Kaiser
 - Marshall Hospital Emergency Department/Crisis
 - Barton Hospital Mental Health/Crisis
 - South Lake Tahoe Community Mental and Behavioral Health Cooperative
 - Telecare Corporation
 - Crisis Intervention Multi-Disciplinary Team
 - Health and Human Services Agency Fiscal Team
 - Adult System of Care Leadership
 - Children's System of Care (State)
 - Adult Placement Committee (Mental Health and Public Guardian)
 - Multi-Disciplinary Team Adult (Mental Health, Public Guardian, and County Counsel)
 - Multi-Disciplinary Adult Service Team (MAST) organized by IHSS and includes Health and Human Services Agency, El Dorado County Sheriff, El

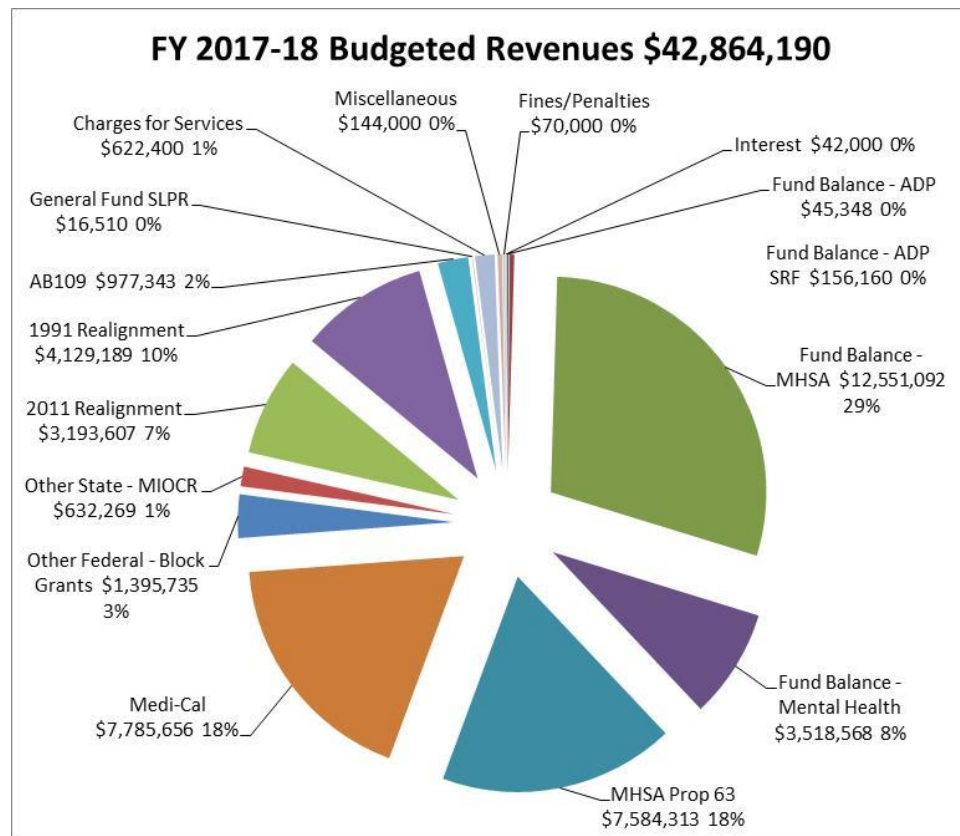
Dorado Community Health Center, The Center for Violence Free Relationships, ALTA, and Placerville and South Lake Tahoe Police Departments

- Access to Care (organized by Health Officer Nancy Williams) including but not limited to, Health and Human Services Agency, California Health and Wellness, Western Sierra Clinic, El Dorado County Office of Education, El Dorado Community Health Center, Barton Health, and Marshall Medical

EL DORADO COUNTY BEHAVIORAL HEALTH DIVISION STAFFING:

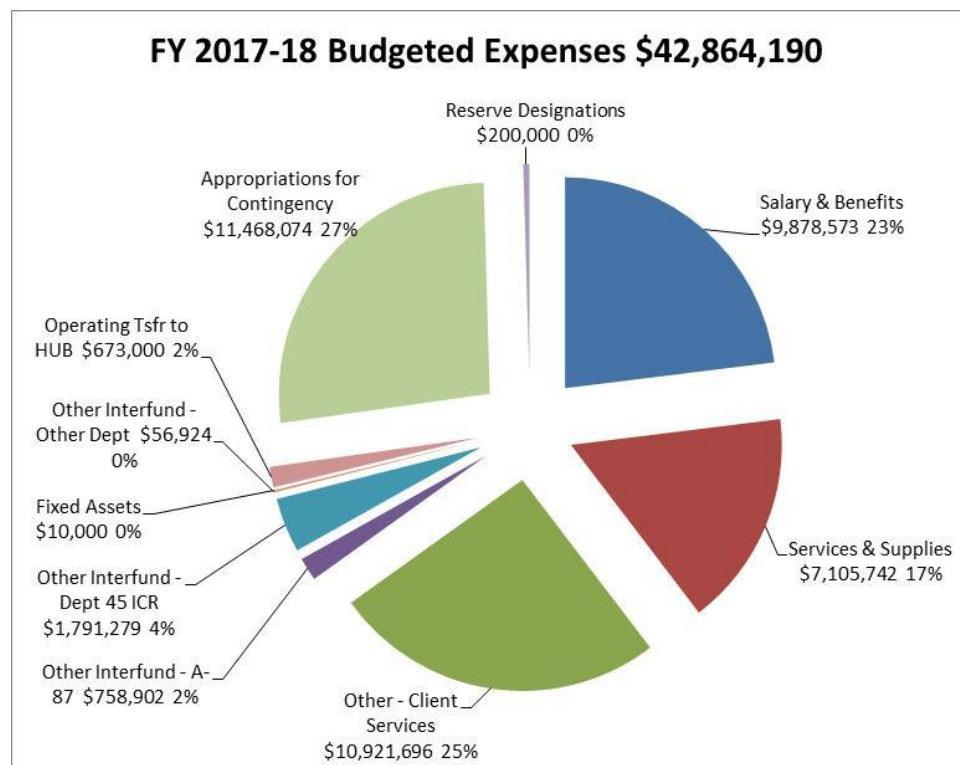
- **New Hires:**
 - Paul Fierro, MFTI, SLT Mental Health Clinician
- **Promotions:**
 - None
- **Recruitments:**
 - Ongoing
 - Mental Health Clinicians WS (Access Team, ICM, Mobile Crisis) (5.0 FTE)
 - Administrative Technician WS (Utilization Review) (1.0 FTE)
 - Manager of Mental Health Programs
 - New
 - Patients' Rights Advocate (Part-time 0.4 FTE)
- **Separations:**
 - Dani Mills, Patients' Rights Advocate (10/19/17)
 - Jessica Gonzales, MHW, SLT
- **Position Changes:**
 - Eric Preszler, MH Clinician, transitioned from Extra Help to Regular status, and moved to the Access / PES team.

EL DORADO COUNTY BEHAVIORAL HEALTH FINANCIAL UPDATE:



Highlights:

- Most funding coming into Behavioral Health is tied to delivery of services for specified programs.
- Base funding levels for individual counties are now set for 2011 Realignment.
- The county budgets full use of fund balance on the revenue side and an appropriation for contingencies on the expense side to allow flexibility throughout the year.
- MHSR Revenues are paid at an estimated rate all year long, a true up occurs in the July/August timeframe. The true up can either greatly increase or decrease revenues received for the year.



Areas of Concern:

- When the economy slows down and sales tax receipts drop statewide, we will experience a reduction in 1991 & 2011 Realignment.
- When the economy slows and California millionaires' income levels drop, MHSR revenues will likewise drop.

CASELOAD AND NEW SERVICE REQUEST DATA

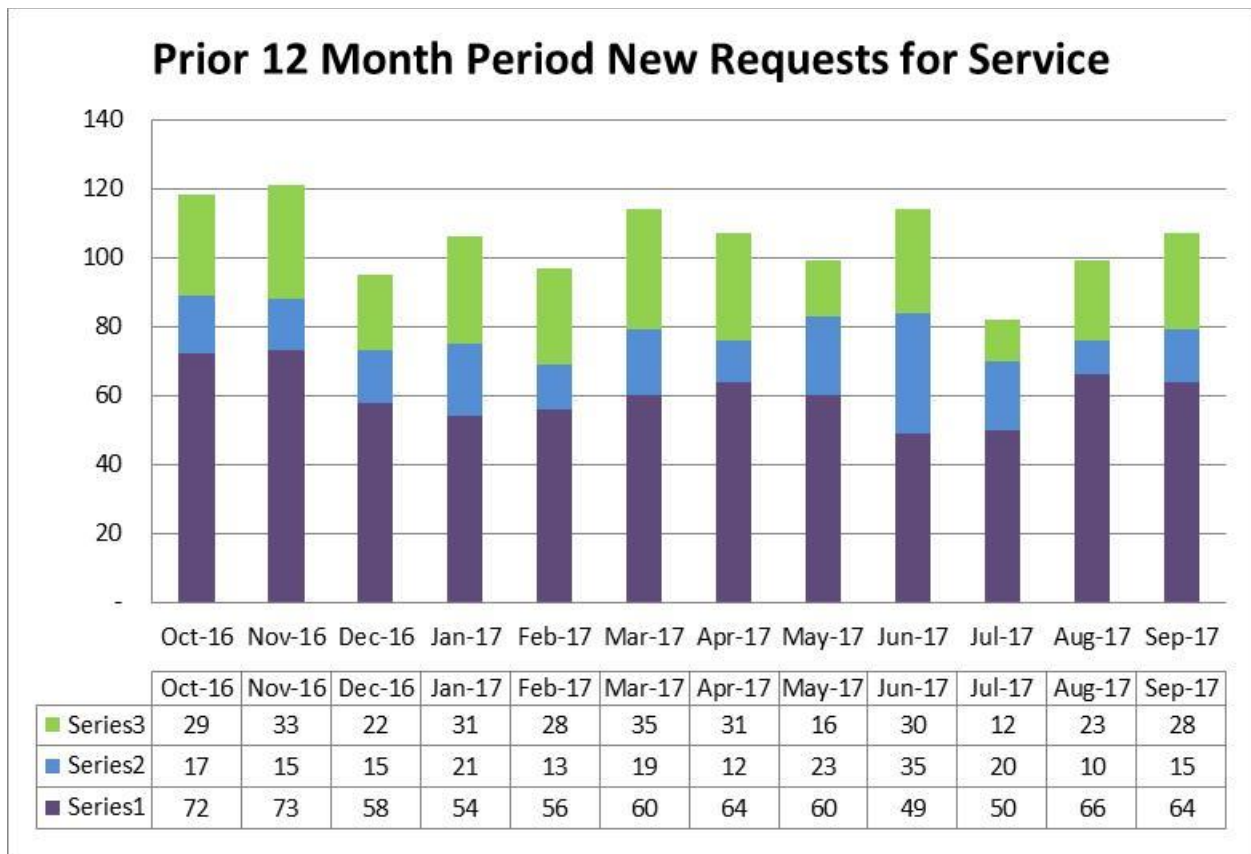
Caseload as of September 2017

Children's Outpatient South Lake Tahoe	Clients	Children's Outpatient West Slope	Clients	Total
TAY	9	TAY	17	26
Clinic	8	Clinic	68	76
Contractor: Sierra Child & Family Services (SCF)	39	Contractor: Sierra Child & Family Services (SCF)	69	108
Contractor: Tahoe Youth & Family (TY)	3	n/a		3
		Contractor: Summitview (SV)	73	73
		Contractor: New Morning (NM)	21	21
		Contractor: Stanford Youth Solutions (SYS)	2	2
Subtotal Children's	59	Subtotal Children's	250	309

Adult Outpatient South Lake Tahoe	Clients	Adult Outpatient West Slope	Clients	Total
Clinic	47	Clinic	258	305
ICM/FSP	18	ICM/FSP	54	72
		AB 109	18	18
Subtotal Adults	65	Subtotal Adults	330	395

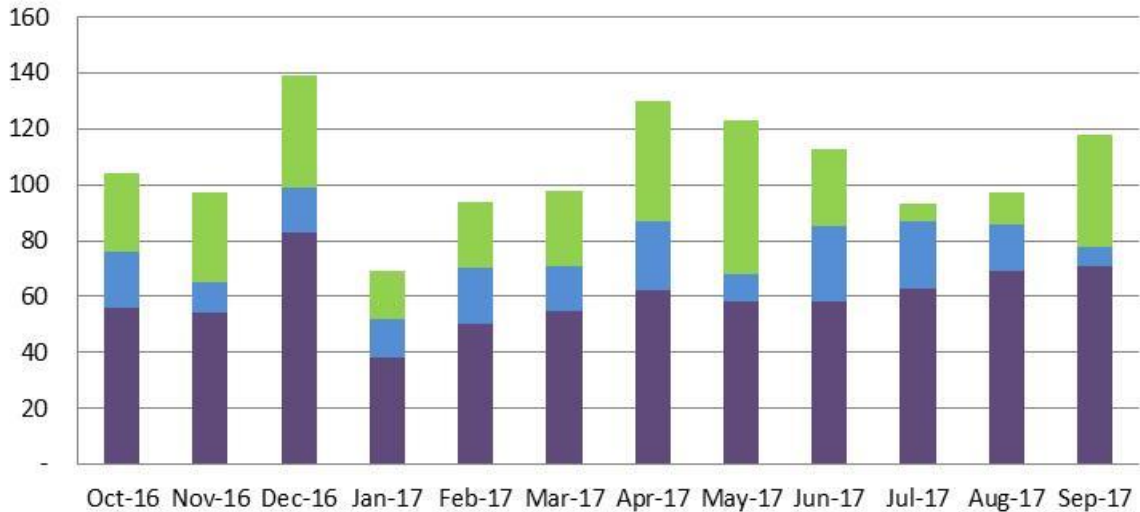
Total South Lake Tahoe	124	Total West Slope	580	704
------------------------	-----	------------------	-----	-----

New Service Request Trends



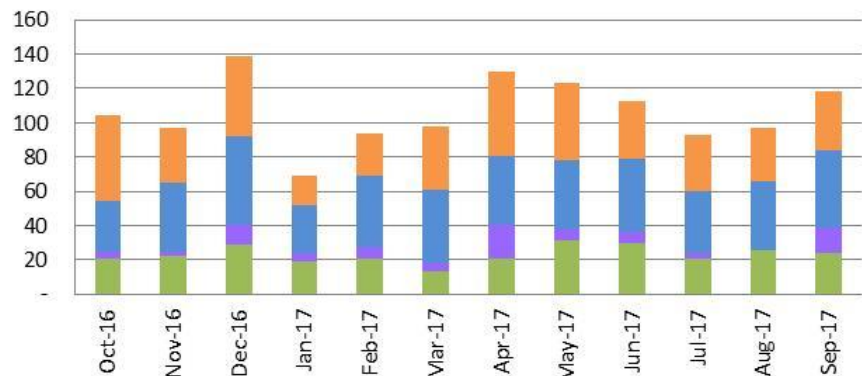
Discharged Service Request Trends

**Prior 12 Month Period Discharged Requests for Service
(by Age)**



	Oct-16	Nov-16	Dec-16	Jan-17	Feb-17	Mar-17	Apr-17	May-17	Jun-17	Jul-17	Aug-17	Sep-17
Children	28	32	40	17	24	27	43	55	28	6	11	40
TAY	20	11	16	14	20	16	25	10	27	24	17	7
Adult	56	54	83	38	50	55	62	58	58	63	69	71

**Prior 12 Month Period Discharged Requests for Service
(by Disposition)**



	Oct-16	Nov-16	Dec-16	Jan-17	Feb-17	Mar-17	Apr-17	May-17	Jun-17	Jul-17	Aug-17	Sep-17
Other	50	32	47	17	25	37	49	45	34	33	31	34
Does Not Meet Medical Necessity	29	40	52	28	42	43	41	40	43	36	40	45
To Other MH Provider	4	3	11	5	6	5	19	7	6	3	-	15
To BHD OP Services	21	22	29	19	21	13	21	31	30	21	26	24

Assisted Outpatient Treatment: (Rhapsody Flores)

Please see detail in AOT Handout

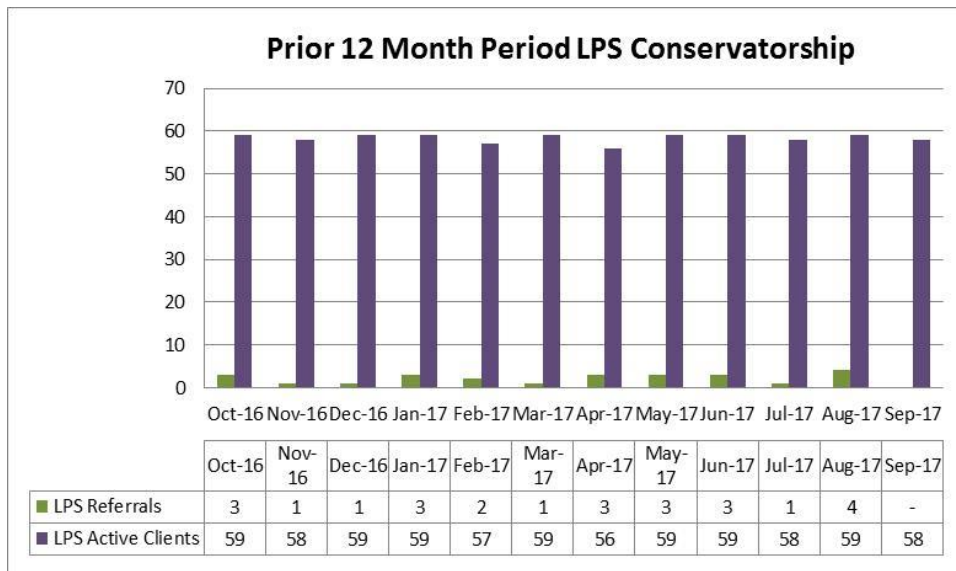
Disposition of Referrals:

0 did not meet program criteria,
1 met initial program criteria,
1 individual voluntarily accepted outpatient services,
0 individuals to proceed with the AOT process,
0 applications in review process

Discharged AOT clients:

0 clients discharged:
0 to a lower level of service,
0 out of services

LPS Conservatorship: (Rhapsody Flores)



LSP Active Clients:

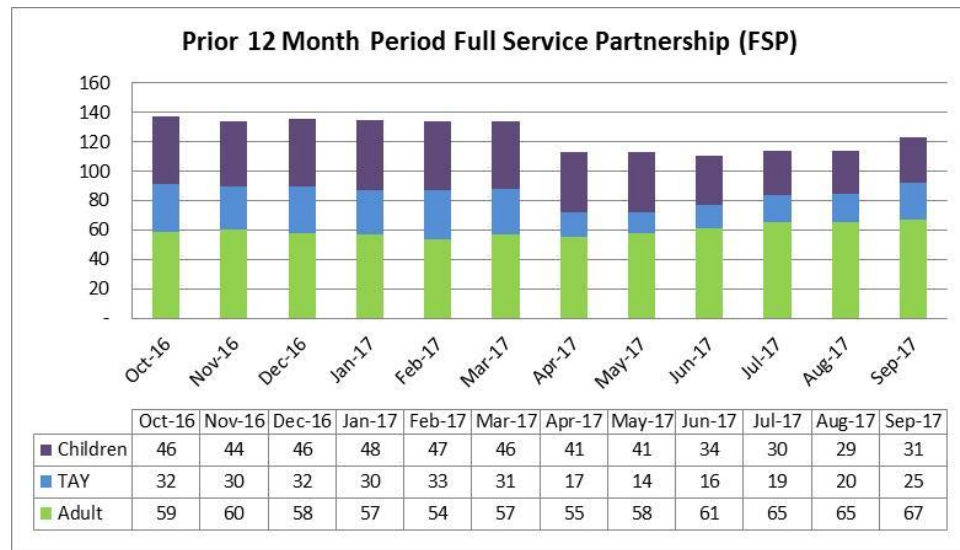
56 LPS Conservatorships
2 Temporary Conservatorships

LPS Terminations:

0 LPS Terminations
0 Pending LPS Terminations

Note: Referrals for June-August were omitted in error in the reports for those months. The data has been corrected.

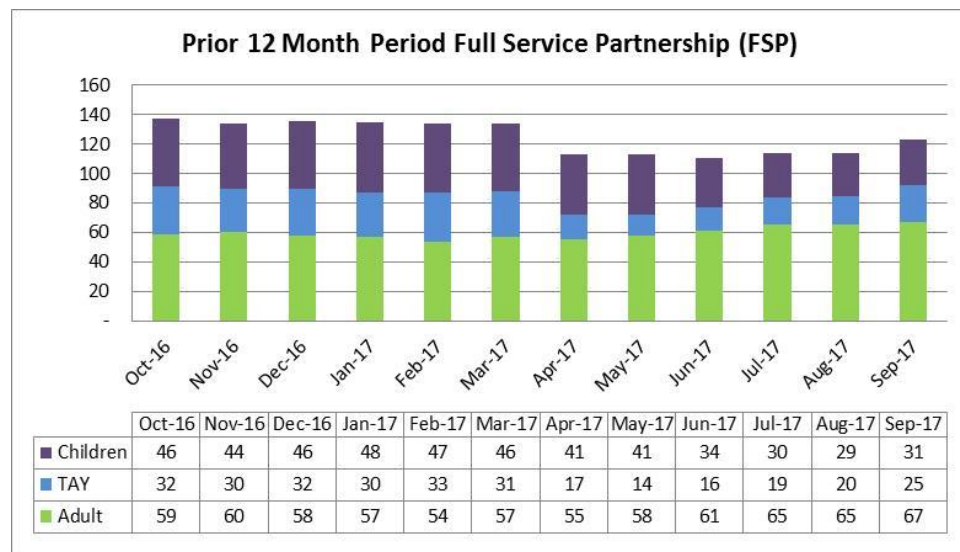
Full Service Partnership (FSP) and Intensive Case Management (ICM) (Rhapsody Flores and Karen Naegeli)



Intensive Case Management

- West Slope: Serving 39 clients
- SLT: Serving 18 clients

Outpatient Services (excludes FSP and Out-of-County Placements)



September discharges:

61 Children discharged from all services

19 Tahoe
36 West Slope
6 Out of County

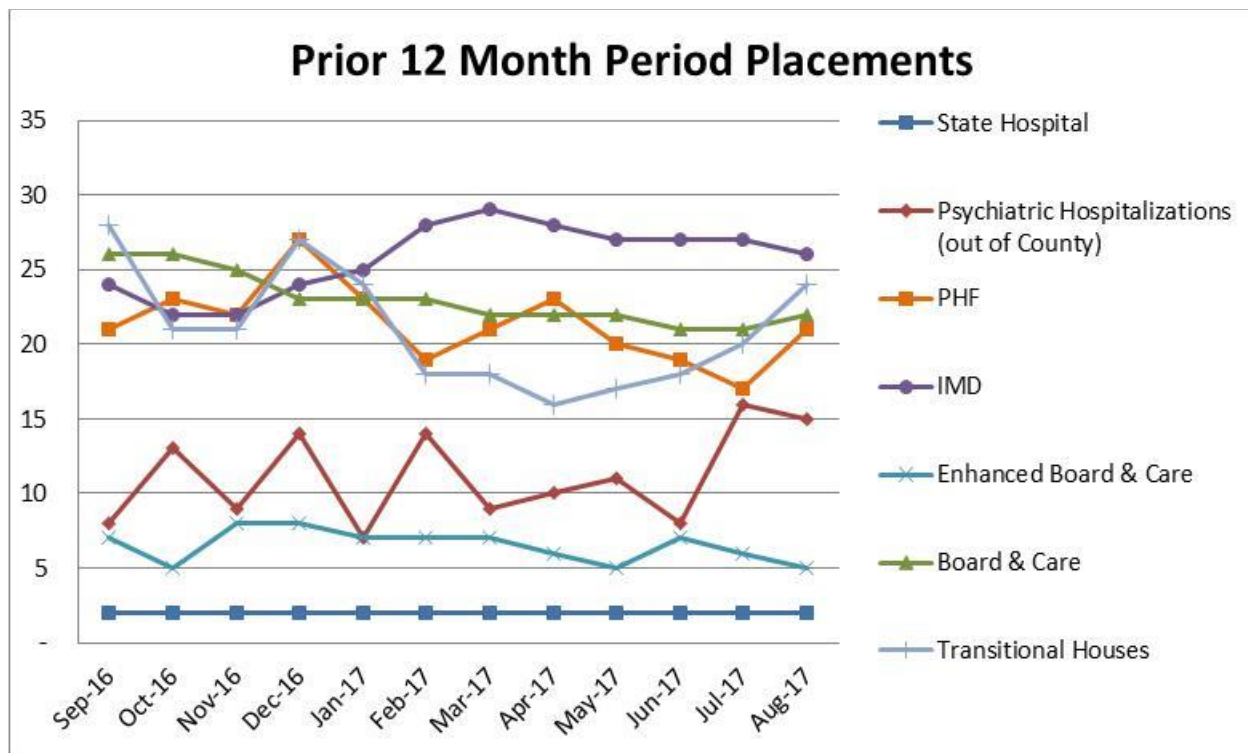
50 TAY discharged from all services

8 Tahoe
41 West Slope
1 Out of County

155 Adults discharged from all services

37 Tahoe
97 West Slope
21 Out of County

PLACEMENTS



Note: The Psychiatric Hospitalizations (out of County) have been updated for the entire year to capture any late notices of hospitalizations received. PHF hospitalizations have been updated to reflect only El Dorado County beneficiaries (previous numbers were total PHF hospitalizations).

Board and Care / IMDs / Secure Placements (Rhapsody Flores)

- 23 IMD beds - Crestwood/Canyon Manor/California Psychiatric Transitions (CPT)
- 2 State Hospital
- 7 Enhanced Board and Care beds including Willow Glen & Silver Ridge
- 23 Board and Care - Sacramento & Galt (including Grace Home)
- **Total:**
 - 50 Out of County Placements
 - 5 In County Placements (Silver Ridge)

Transitions Treatment Program / MIOCR (Rhapsody Flores / Sabrina Owen)

- **WS:** 11 of 15 beds filled
- **SLT:** 10 of 12 beds filled :
 - T1 1 opening (female)
 - T2 (MIOCR) 1 opening (female, interview pending, another on waitlist)

Permanent Supportive Housing (Ren Scammon / Sabrina Owen)

Trailside Terrace

Clients receive services from the Wellness and Recovery team or from community-based supports

- 5 of 5 units occupied
- Wait List:
 - 1 bedroom: 13
 - 2 bedroom: 6
 - 3 bedroom: 1

The Aspens at South Lake

Clients receive ICM team coverage

- 6 of 6 units occupied
- Wait List: 2 known
 - The Aspens is a floating unit configuration based on household size rather than a specific number of apartments for each number of bedrooms

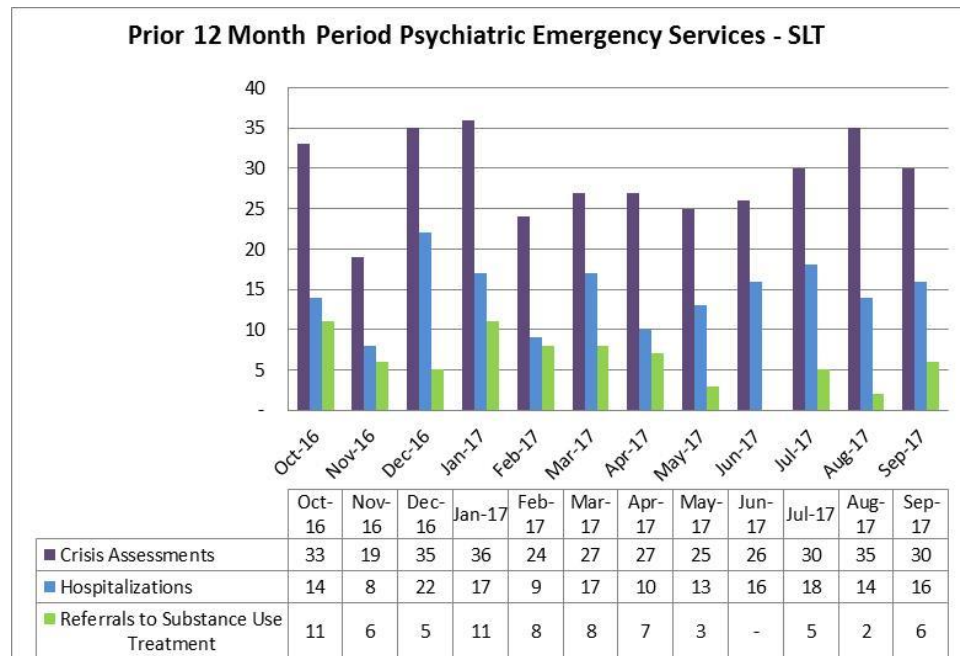
Psychiatric Health Facility (Jamie Samboceti)

September:

- There were 27 Admissions; 21 Admissions were El Dorado County residents and 6 were Out of County residents.
- There were 19 El Dorado County residents discharged; 14 to Home with support, 3 to Home without support, 0 MHRC, 0 Board and Care, 1 to ICM T-House, 1 to Shelter, 0 to Other, and 0 to Emergency Department.
- Upon discharge, 17 El Dorado County residents were insured and 2 El Dorado County residents were pending insurance.
- There were 0 Seclusion Episodes, 0 Physical Restraint Episodes (0 minutes), 0 Assaults (0 clients), 0 Elopements, 0 Medication Errors (0 medication errors with no patient involvement), and Client Surveys 23
- There were 7 denials of El Dorado County referrals: 2 were discharged from the hospital prior to admission to PHF; 2 had ongoing medical needs; 1 had substance abuse, 1 was developmentally delayed, and 1 had Medicare.
- Average daily census was 10 (range 8-12), with 8 average length of stay of days.

CRISIS SERVICES

Psychiatric Emergency Services (PES) (Sabrina Owen and Angie Larrigan)

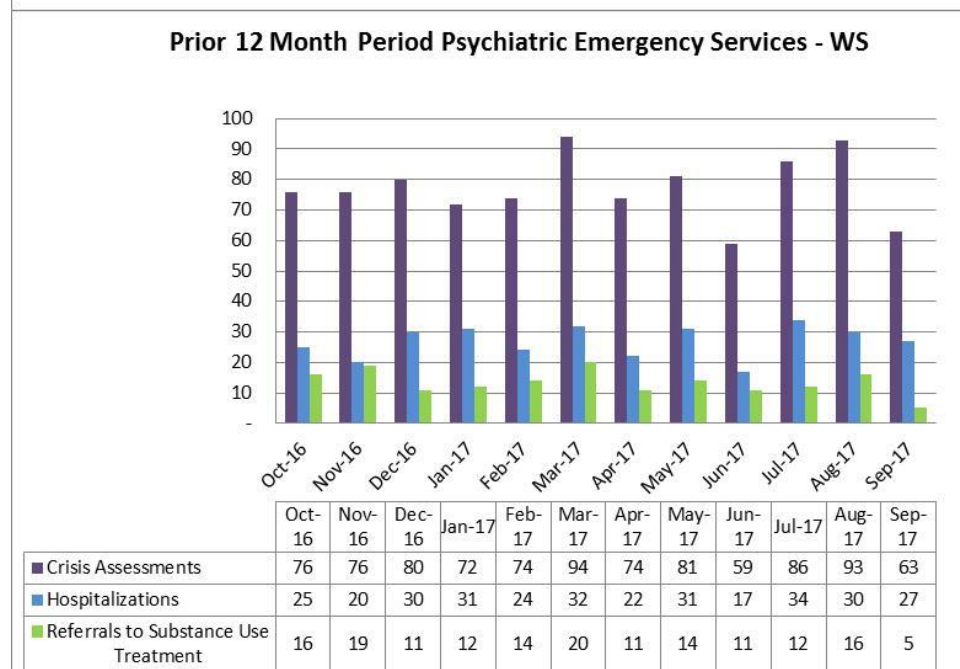


Crisis Assessments for Open Clients:

- SLT: 2
- West Slope: 11

Hospitalizations of Open Clients

- SLT: 2
- West Slope: 6



Crisis Intervention Teams (CIT) (Angie Larrigan and Sabrina Owen)

- **SLT:**
 - During the MDT meeting on September 27, the team talked about issues of confidentiality, and exceptions to confidentiality under State and federal laws,

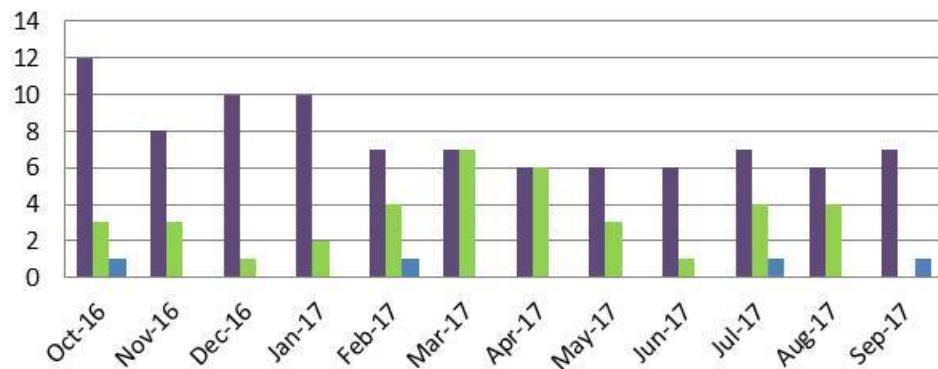
to determine how to best serve clients and protect their statutory rights, while ensuring their safety and responding to law enforcement requests.

- **WS:**
 - September's CIT meeting focused on the Homeless Outreach Team (HOT). The HOT team and the BHD developed a plan to partner to support specific homeless mentally ill individuals who have been reluctant to engage healthy choices and accept support interventions.
 - Discussed the need for support with jail discharges when inmates are on a sophisticated psychotropic medication regime. Developed a plan to increase communication with CFMG surrounding such inmates to provide urgent follow up support at the BHD.
 - Discussed the need for law enforcement intervention when an individual has engaged in illegal activity, is brought to the Emergency Department on a 5150 hold and is subsequently cleared of 5150 hold.

JUSTICE SERVICES

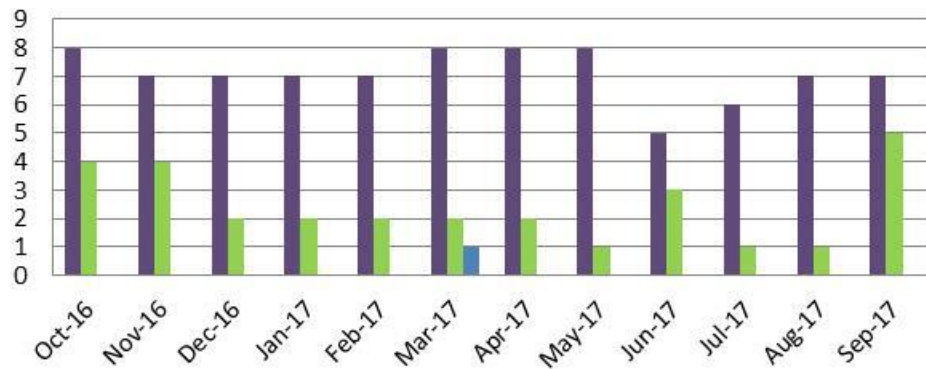
Behavioral Health Court (John Schumacher)

Prior 12 Month Period Behavioral Health Court - SLT



	Oct-16	Nov-16	Dec-16	Jan-17	Feb-17	Mar-17	Apr-17	May-17	Jun-17	Jul-17	Aug-17	Sep-17
■ Active Participants	12	8	10	10	7	7	6	6	6	7	6	7
■ Sober Living	3	3	1	2	4	7	6	3	1	4	4	0
■ Residential Substance Use	1	0	0	0	1	0	0	0	0	1	0	1

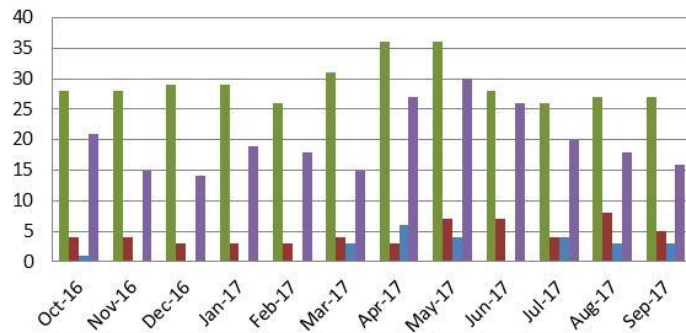
Prior 12 Month Period Behavioral Health Court - WS



	Oct-16	Nov-16	Dec-16	Jan-17	Feb-17	Mar-17	Apr-17	May-17	Jun-17	Jul-17	Aug-17	Sep-17
Active Participants	8	7	7	7	7	8	8	8	5	6	7	7
Sober Living	4	4	2	2	2	2	2	1	3	1	1	5
Residential Substance Use	0	0	0	0	0	1	0	0	0	0	0	0

AB 109 (John Schumacher)

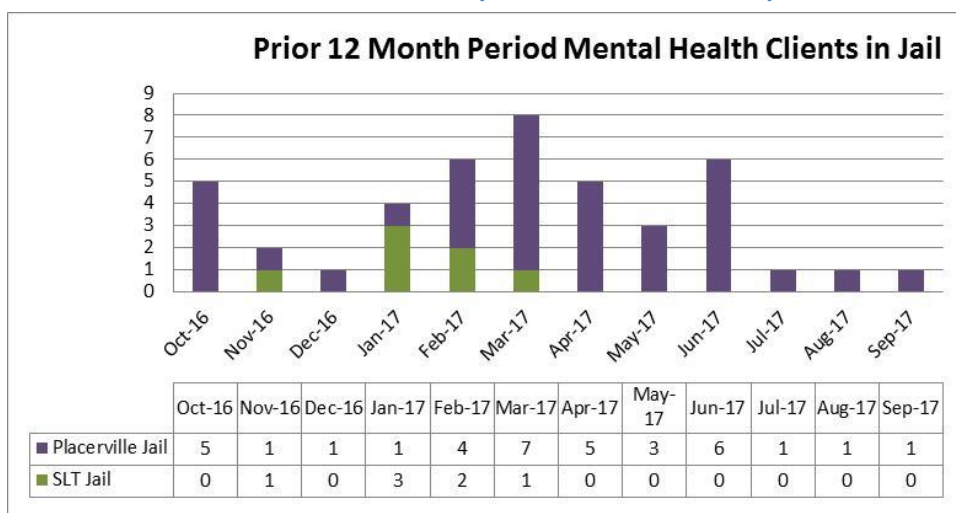
Prior 12 Month Period AB 109 Client Services at the Community Corrections Center



	Oct-16	Nov-16	Dec-16	Jan-17	Feb-17	Mar-17	Apr-17	May-17	Jun-17	Jul-17	Aug-17	Sep-17
Substance Use Treatment @ CCC	28	28	29	29	26	31	36	36	28	26	27	27
Sober Living	4	4	3	3	3	4	3	7	7	4	8	5
Residential Substance Use	1	0	0	0	0	3	6	4	-	4	3	3
Mental Health Services	21	15	14	19	18	15	27	30	26	20	18	16

- 7 clients are receiving Substance Use Education services in the South Lake Tahoe jail. *Moral Reconation Therapy/SUD treatment on hold and will resume within 30 days. The new Health Program Specialist recently completed training for MRT and is preparing to start services.*
- 10 clients are receiving Substance Use Disorder treatment in Placerville Jail.
- 5 clients are receiving treatment from a contracted community provider in SLT.
- 3 clients are receiving treatment from a contracted community provider in Placerville.

Mental Health Clients in Jail (Jamie Samboceti)



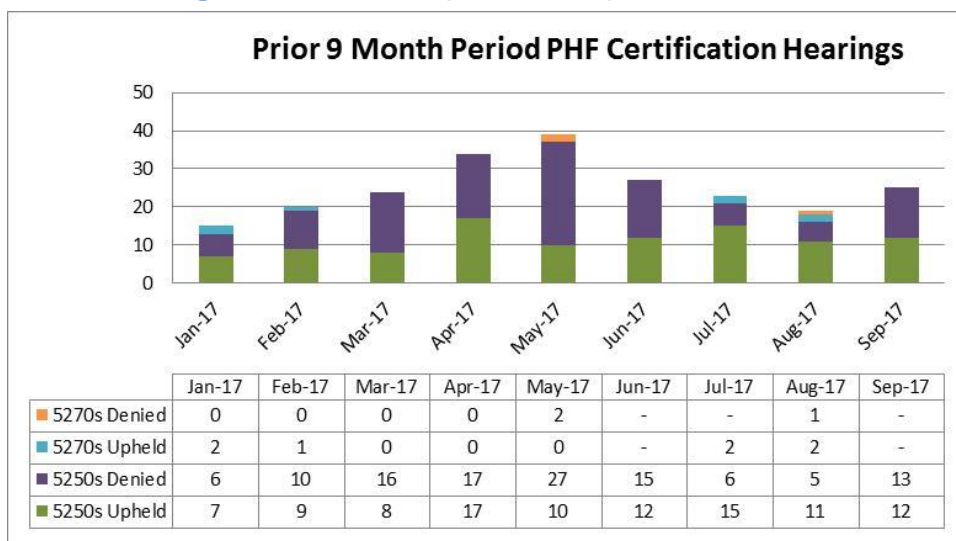
Count of Behavioral Health's existing clients that were receiving Specialty Mental Health Services at the time of their incarceration in the Placerville or SLT Jails only.

Restoration of Competency (Rhapsody Flores)

- 0 Outpatient ROC referrals; 0 Jail ROC referral
- 0 client receiving ROC Outpatient services
- 2 clients receiving ROC Inpatient services (CPT)

QUALITY ASSURANCE & PATIENT RIGHTS

Patients' Rights Advocate (Dani Mills)



Certification hearings are held at the PHF on Mondays and Thursdays.

- The new contract for Certification Review Hearing Officer services started 9/28/17 under an agreement with the University of the Pacific, McGeorge School of Law, Institute for Administrative Justice. The Institute for Administrative Justice has contracts in several surrounding counties, including Placer, Sacramento and Yolo. Attorneys serve as the Hearing Officers for all 5250 and 5270 Certification Review Hearings at the PHF.

Quality Improvement/Utilization Review (Ren Scammon)

- The next Quality Improvement Committee meeting is scheduled for October 25, 2017. The Behavioral Health Division is reviewing the current Charter for necessary revisions to ensure appropriate representation and to include Substance Use Disorder Quality Improvement activities as well.

Grievances/Appeals/Hearings (Ren Scammon)

Month Filed	Month Completed	Type	Topic	Location	Outcomes (Appeals / Hearings Only)
05-2017		Grievance	Quality of Care: Staff Behavior Concern	WSPES	
08-2017	10-2017	Grievance	Quality of Care: Staff Behavior Concern	PHF	--
08-2017	10-2017	Grievance	Quality of Care: Staff Behavior Concern	PHF	--
08-2017	10-2017	Grievance	Quality of Care: Staff Behavior Concern	WS Adult	--

PERFORMANCE IMPROVEMENT METRICS (reported quarterly)

Next Report Period: Quarter 1 (July through September 2017)

Reporting Month: Postponed until November

PROGRAM ACTIVITY UPDATES

MENTAL HEALTH SERVICES ACT (MHSA) (Ren Scammon/Tami Smith/Heather Longo)

- The MHSA Team is in the process of creating surveys, flyers, and scheduling meetings for the Community Planning Process (CPP). The following meetings relating to the CPP have been confirmed to date:
 - Nov. 2, 2017 – South Lake Tahoe Community Mental and Behavioral Health Cooperative
 - Nov. 2, 2017 - South Lake Tahoe Family Resource Center
 - Nov. 2, 2017 - South Lake Tahoe NAMI
 - Nov. 7, 2017 - NAMI El Dorado
 - Nov. 15, 2017 - ACEs Collaborative
 - Nov. 28, 2017 - Drug-Free Divide
 - Jan. 18, 2018 - Commission on Aging

- Year-to-date (through October 15) revenues for MHSA (Prop 63) funding is \$1,636,141.

OUTPATIENT SERVICES

(Sabrina Owen and Karen Naegeli (SLT); Lesly Van Sloten and Rhapsody Flores (WS))

Wellness Center Activities:

Tahoe:

- Due to unexpected cold weather (we had early snow!) our beach BBQ was readjusted and moved indoors (lessons in flexibility). We enjoyed a BBQ and games of trivia, bingo and name that famous person.

West Slope:

- The Wellness Center had its very first completely planned and delivered, Peer-Led Wellness Center event. Graduates of The Peer Leadership Academy held an “End-of-Summer-Bash” on October 19th in the Wellness Center and on the patio. They met together as an organizing group, they delegated work and planning assignments, they planned the entertainment which included inviting the Dry Mangoes Band, they created the menu, they did the grocery shopping (with a Wellness Center Staff member), they decorated, and they assigned various tasks from cooking to clean-up to each other. It turned out FANTASTIC! During this event, Wellness Center Staff passed out “Volunteer Appreciation” Certificates to 27 volunteers. Of course we had a few dips in the road which helped to make it a terrific learning experience for all. Peers were glowing with excitement and Staff were glowing with pride at the magnitude of the event, on many different levels, and how very little staff were needed to assist.
- Peer Leaders are planning their next 3 events: A trip to “Apple Hill” on October 25th; a Halloween Party in the Wellness Center on Halloween, October 31st; and the Annual Fall Festival at “Fireman’s Hall” on November 14th.
- The Client Band, “The Dry Mangoes,” are taking their gig on the road to the SLT Wellness Center on October 18th.
- The 3rd Cohort in the Peer Leadership Academy has completed the first half of the training and will begin the second half of training on October 18th.

ICM Activities:

Tahoe:

- Several clients in transitional housing are exploring independent living and finding affordable housing options in SLT, which is limited.

West Slope:

- Eight clients attended a Fishing Trip on 9/30/17 and 4 caught fish. One of the clients had never been fishing before.
- Clients in TTP are getting ready for the 3rd Annual Pumpkin Carving Contest.

Children's Services (Angie Larrigan)

- The Continuum of Care Reform (CCR) State/County Implementation Teams are meeting monthly to collaboratively discuss solutions to emerging challenges and barriers related to the implementation of CCR. Counties are slow to make progress with CCR implementation, as we are awaiting further standardized guidance from the DHCS. In the interim, we continue to focus on serving those in need with both quality and timely services.

TAY DBT/FEP Program (Sabrina Owen and Lesly Van Sloten)

Tahoe

- TAY DBT: The DBT group at Tallac began and has had good attendance. Recruitment for skills coaches for South Tahoe High School has begun as well as referrals to the group. Anastasia is meeting with the California Conservation Corps to develop a DBT group for TAY in their program.
- TAY FEP: There are two current FEP clients and two who disengaged with significant substance use issues and limited insight into their disorder.

Placerville

- TAY DBT: Kate and Kris met with the Principals at both Independence High School and Charter Community School to introduce Kate to each school and set up Kate's new group schedule. Kate began DBT Groups at Independence High School on October 2nd, with amazing success, and will begin her first DBT group at Charter Community School on October 17th. Both schools are overwhelmingly enthusiastic about DBT Skills Training returning to their campus.
- TAY FEP: One FEP Client graduated to a lower level of care and is being seen in the Adult Outpatient Program. Two FEP Clients just began services with Kate.

ADULT OUTPATIENT GROUP SCHEDULES

WS Adult Outpatient Services

Monday	
BHC/Wellness - Check In Group	10:30 am - 11:30 am
Manage your Emotions Group	1:00 pm - 2:00 pm
Current Events Group	1:15 pm - 2:00 pm (Wellness/Peer Led)
Exercise Group	2:00 pm - 3:00 pm (Wellness/Peer Led)
Stress Reduction	3:00 pm - 4:00 pm
Communication Skills	3:00 pm - 4:00 pm (Wellness)
Play a Game Group	3:00 pm - 4:00 pm (Wellness)
Music Group	3:00 pm - 4:00 pm (Staff and Peer Led)
Tuesday	
Country Line Dancing Lessons	12:00 – 1:00pm (Wellness)
Current Events Group	1:15 pm - 2:00 pm (Wellness/Peer Led)
Women's Co-Occurring Recovery Group	1:15 pm - 2:45 pm (ADP)
Art Group with Jan from NAMI	1:30 pm - 3:00 pm (Wellness)
Healthy Pleasures	1:30 pm - 2:30 pm (Wellness)
Job Connections Group	1:30 pm - 3:30 pm (Wellness)
Smoking Cessation	3:00 pm - 4:00 pm (Wellness)
Wednesday	
DBT Skills Group - Skills Training	10:00 am - 12:00 pm
SAMHSA - Medication Education	11:00 am - 12:00 pm (On Hold)
Transitional Housing Independent Living Skills	12:00 pm - 1:00 pm
Dual Recovery Anonymous - Peer Support Group	1:00 pm - 2:00 pm (Wellness)
Current Events Group	1:15 pm - 2:00 pm (Wellness/Peer Led)
Self-Care/ADLS Group	1:30 pm - 3:30 pm (Wellness)
Therapeutic Music Group	2:00 pm - 3:00 pm (Wellness)
Anger Management Group	2:00 pm - 3:00 pm
Physical Activity (1 mile walk)	3:00 pm - 3:45 pm (Wellness)
MH Peer Leadership Academy	3:00 pm - 4:00 pm, monthly, (Wellness)
Thursday	
Country Line Dancing Lessons	12:00 – 1:00 pm (Wellness)
Current Events Group	1:15 pm - 2:00 pm (Wellness/Peer Led)
Women's Co-Occurring Recovery Group	1:15 pm - 2:45 pm (Seeking Safety, ADP)
Healthy Pleasures	1:30 pm - 2:30 pm (Wellness)
Get Fresh Nutrition Classes - EDC PH	1:30 pm - 2:30 pm (Wellness)
Nutrition/Meal Planning group	In the T-houses on a rotating schedule
Crafts with the Textile Division	2:00 - 4:00 pm (Peer Led)
Life Skills Group	3:00 pm - 4:00 pm (Wellness/Peer Led)
Gardening Group 2x/Month	3:00 pm - 4:00pm

Friday	
DBT Group - Skills Training	10:00 am - 12:00 pm
Men's Co-Occurring Recovery Group	10:00 am - 12:00 pm (ADP)
Current Events Group	1:15 pm - 2:00 pm (Wellness/Peer Led)
Ted Talks and Cinema Club	1:30 pm - 3:30 pm (Wellness)
DBT Group - Skills Training	1:30 pm - 2:30 pm
Music Appreciation Group	2:00 pm - 3:00 pm (Wellness)
Mindfulness Group	2:45 pm - 3:30 pm (Wellness)

SLT Adult Outpatient Services

Monday	
Seeking Safety (Co-Occurring)	11:00 am - 12:00 pm (ADP)
DBT - Skill Building	1:30 pm - 2:30 pm (Wellness)
TED Talks - Information & Conversation	3:00 pm – 3:30 pm (Wellness)
Current Events Discussion	3:35 pm – 4:00 pm (Wellness)
Tuesday	
DBT - Distress Tolerance	1:00 pm - 2:30 pm
Anger Management	1:30 pm - 2:30 pm (Wellness)
Recovery through Art or Peer Leadership	3:00 pm - 3:30 pm (Wellness)
Just One Thing (Mindfulness)	3:35 pm - 4:00 pm (Wellness)
Wednesday	
Women's Wellness	10:30 am - 11:30 am
Health Awareness/Cooking	1:30 pm - 2:00 pm (Wellness)
Refuge Recovery	3:00 pm – 3:30 pm (Wellness)
Healthy Relationship Skills	3:35 pm – 4:00 pm (Wellness)
Thursday	
Co-occurring Women's group	10:30 am-12pm (ADP)
Community Excursions (active clients only)	1:00 pm - 4:00 pm (Wellness)
Movement Mindfulness	1:30 pm - 2:30 pm (Wellness)
Stress Management	3:00 pm - 3:30 pm (Wellness)
Social Awareness	3:35 pm - 4:00 pm (Wellness)
Friday	
BHC Group	12:30 pm - 1:00 pm
Volunteering (active clients only)	1:00 pm - 4:00pm (Wellness)
Recovery Through Art	1:30 pm - 2:30 pm (Wellness)
Paths to Recovery (Book Study)	3:00 pm - 3:30 pm (Wellness)
Leisure Skills	3:00 pm – 3:30 pm (Wellness)
Recovery Through Music	3:35 pm – 4:00 pm (Wellness)
Men's Wellness	2:30 pm - 4:00 pm (on hold pending hiring of new staff)
Saturday	
Friends 'n Fitness	11:00 am - 12:30 pm

INITIALS & DEFINITIONS

Initials	Definition
AB	Assembly Bill
ACEs	Adverse Childhood Experiences
ADL	Activities of Daily Living
ADP	Alcohol and Drug Programs
AOT	Assisted Outpatient Treatment
APS	Adult Protective Services
ARF	Adult Residential Facility
B&C	Board and Care
BHC	Behavioral Health Court
BHD	Behavioral Health Division (formerly the Mental Health Division)
BOMUSD	Black Oak Mine Unified School District
BSCC	Board of State and Community Corrections
CalMHSA	California Mental Health Services Authority
CBHDA	California Behavioral Health Directors Association
CBO	Community Based Organization
CBT	Cognitive Behavior Therapy
CCC	Community Corrections Center
CCP	Community Corrections Partnership
CCR	Continuum of Care Reform
CFMG	California Forensic Medical Group
CFR	Code of Federal Regulations
CFT	Children and Family Teams
CFTN	Capital Facilities and Technology Needs
CHP	California Highway Patrol
CIT	Crisis Intervention Team
CMS	Centers for Medicare & Medicaid Services
CPP	Community Planning Process
CPS	Child Protection Services
CPT	California Psychiatric Transitions
CSS	Community Services and Supports
DBT	Dialectical Behavior Therapy
DHCS	Department of Health Care Services (California)
DMC-ODS	Drug Medi-Cal Organized Delivery System
Dx	Diagnosis
ED	Emergency Department
EDC	El Dorado County
EDCMH	El Dorado County Mental Health
EDCSO	El Dorado County Sheriff's Office
EDSO	El Dorado Sheriff's Office
EDCVC	El Dorado Community Vision Coalition
EH	Extra Help
EPSDT	Early and Periodic Screening, Diagnosis and Treatment
EQRO	External Quality Review Organization
ER	Emergency Room
FEP	First Episode Psychosis
FSP	Full Service Partnership
FTE	Full-Time Equivalent
FY	Fiscal Year
HHSA	Health and Human Services Agency

HOT	Homeless Outreach Team
ICC	Intensive Care Coordination
ICM	Intensive Case Management
IHBS	Intensive Home-Based Services
IMD	Institution for Mental Disease (facility)
ITWS	Information Technology Web Services
Katie A.	<i>Katie A. vs. Bonta</i> Lawsuit and/or resulting programs/services
LL	Laura's Law
LOCUS	Level of Care Utilization System
LPS	Lanterman Petris Short
LT	Limited Term
LTCC	Lake Tahoe Community College
MDT	Multi-Disciplinary Team
MH	Mental Health
MHD	Mental Health Division
M-F	Monday through Friday
MHOAC	Mental Health Oversight and Accountability Commission
MHRC	Mental Health Rehabilitation Center (facility)
MHSA	Mental Health Services Act
MHW	Mental Health Worker
MIOCR	Mentally Ill Offender Crime Reduction
MOA	Medical Office Assistant
NM	New Morning Youth & Family
OP	Outpatient
PA	Physician Assistant
PATH	Projects for Assistance in Transition from Homelessness
PCP	Primary Care Physician
PD	Police Department
PEI	Prevention and Early Intervention
PES	Psychiatric Emergency Services
PG	Public Guardian
PHF	Psychiatric Health Facility
PIP	Primary Intervention Program or Program Improvement Plan
POC	Plan of Correction
PPD	Placerville Police Department
QI	Quality Improvement
QI/UR	Quality Improvement/Utilization Review
QIC	Quality Improvement Committee
RIF	Reduction in Force
RFI	Request for Information
RFP	Request for Proposal
ROC	Restoration of Competence
RV	Remi Vista
SAMHSA	Substance Abuse and Mental Health Services Administration
SB	Senate Bill
SCF	Sierra Child & Family
SLT	South Lake Tahoe
SLTPD	South Lake Tahoe Police Department
SO	Sheriff's Office
STHS	South Tahoe High School
STRTP	Short-Term Residential Therapeutic Program
SUD	Substance Use Disorders
SV	Summitview Child & Family

SYS	Stanford Youth Solutions
T-House	Transitional Housing
TAY	Transitional Age Youth
TBD	To Be Determined
TFC	Therapeutic Foster Care
TYFS	Tahoe Youth and Family Services
Tx	Treatment
TY	Tahoe Youth & Family
UR	Utilization Review
WET	Workforce Education and Training
WIA	Workforce Investment Act
WOIA	Workforce Innovations and Opportunities Act
WS	West Slope