

**Behavioral Health Division Update  
Mental Health Commission  
January 10, 2018 Meeting  
(November 2017 Data)**

**ASSISTANT & DEPUTY DIRECTOR UPDATES**

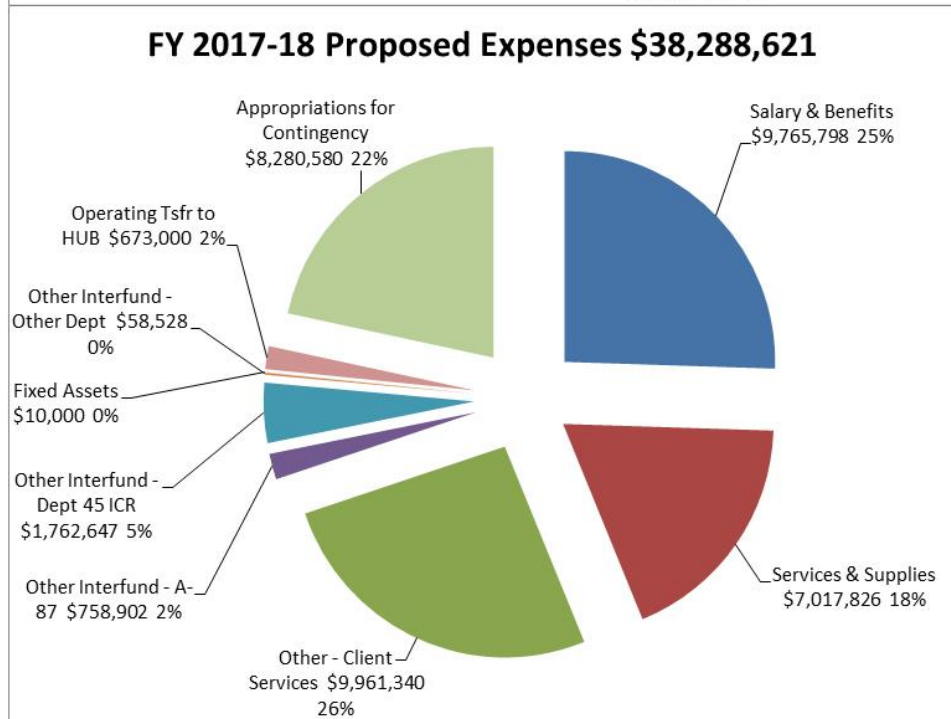
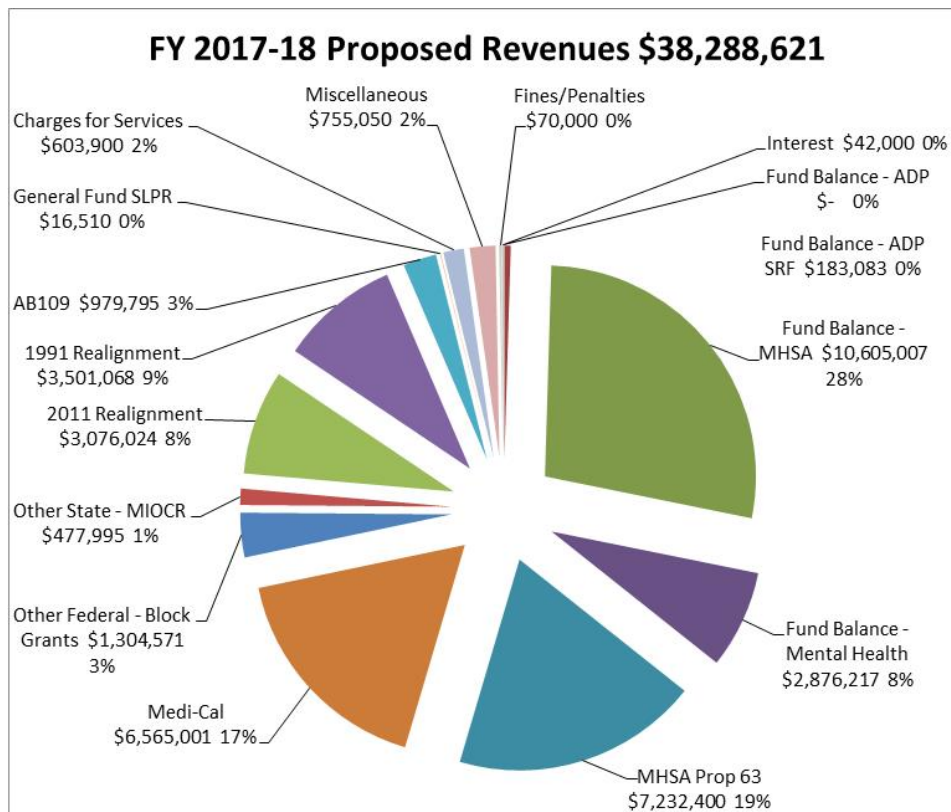
**(Katy Eckert & Jamie Samboceti)**

- HHSA wishes everyone a happy and healthy new year 2018!
- The California Department of Health Services has approved El Dorado County's Drug Medi-Cal Organized Delivery System Plan. The County is still in the process of negotiating rates and the federal Centers for Medicaid Services still has to approve the final. The County's next steps are in developing the Request for Quotes from prospective Drug Medi-Cal contractors and in providing technical assistance to those contractors. We anticipate having an official start date of July 1, 2018.
- The Behavioral Health division reached out to the new Mental Health Urgent Care Clinic in Sacramento to see if they would accept individuals from other counties. They have responded that as it is Sacramento County MHSA funding that supports the program, it is specifically targeted to serve Sacramento County residents and is not intended to serve any residents of any other county.
- Concern has been expressed that there are MHSA funds that would revert to the State due to Assembly Bill (AB) 114 -- that is incorrect. AB 114 re-allocates MHSA funding that was previously subject to reversion back to the County, and that funding must be utilized by June 30, 2020. As discussed at the November 2017 Mental Health Commission meeting, the County is seeking a new Innovation program to utilize the AB 114 funding that is returning to the County. There is also some Prevention and Early Intervention (PEI) funding returning to the County. The County is reviewing the amount of reversion identified by the State and the amount of reversion calculated by the County, and anticipates having the final amounts in the coming weeks. The County will include the plan for use of the AB 114 funds in the FY 18/19 MHSA Plan Update. The FY 18/19 MHSA Plan Update is anticipated to go to the Board of Supervisors in June 2018.
- In January, the County will begin building the FY 2018-19 budget. The Behavioral Health Division anticipates that the budget will look fairly similar to the FY 2017-18 for Traditional funding, with changes in MHSA anticipated due to AB 114 and return of funds which previously reverted to the State, and the Alcohol and Drug Programs due to implementation of the DMC-ODS Waiver.

## **EL DORADO COUNTY BEHAVIORAL HEALTH DIVISION STAFFING:**

- **New Hires:**
  - Vanessa Martinez - Mental Health Worker, LT, MIOCR house SLT
- **Promotions:**
  - None
- **Recruitments:**
  - Ongoing
    - Patients' Rights Advocate (0.4 FTE)
  - New
    - Mental Health Aide (Drivers, Part Time), WS
    - Manager of Mental Health Services (1.0 FTE), WS
- **Separations:**
  - None
- **Position Changes:**
  - None

## EL DORADO COUNTY BEHAVIORAL HEALTH FINANCIAL UPDATE:



### Highlights:

- Most funding coming into Behavioral Health is tied to delivery of services for specified programs.
- Base funding levels for individual counties are now set for 2011 Realignment.
- The county budgets full use of fund balance on the revenue side and an appropriation for contingencies on the expense side to allow flexibility throughout the year.
- MHSAs Revenues are paid at an estimated rate all year long, a true up occurs in the July/August timeframe. The true up can either greatly increase or decrease revenues received for the year.

### Areas of Concern:

- When the economy slows down and sales tax receipts drop statewide, we will experience a reduction in 1991 & 2011 Realignment.
- When the economy slows and California millionaire's income levels drop, MHSAs revenues will likewise drop.

## CASELOAD AND NEW SERVICE REQUEST DATA

### Unduplicated Caseload as of November 2017

Children's Outpatient South Lake Tahoe	Clients	Children's Outpatient West Slope	Clients	Total
TAY	4	TAY	14	18
Clinic Only	3	Clinic Only	61	64
Contractor: Sierra Child & Family Services (SCF)	39	Contractor: Sierra Child & Family Services (SCF)	83	122
Contractor: Tahoe Youth & Family (TY)	1	n/a		1
		Contractor: Summitview (SV)	91	91
		Contractor: New Morning (NM)	22	22
		Contractor: Stanford Youth Solutions (SYS)	2	2
<b>Subtotal Children's</b>	<b>47</b>	<b>Subtotal Children's</b>	<b>273</b>	<b>320</b>

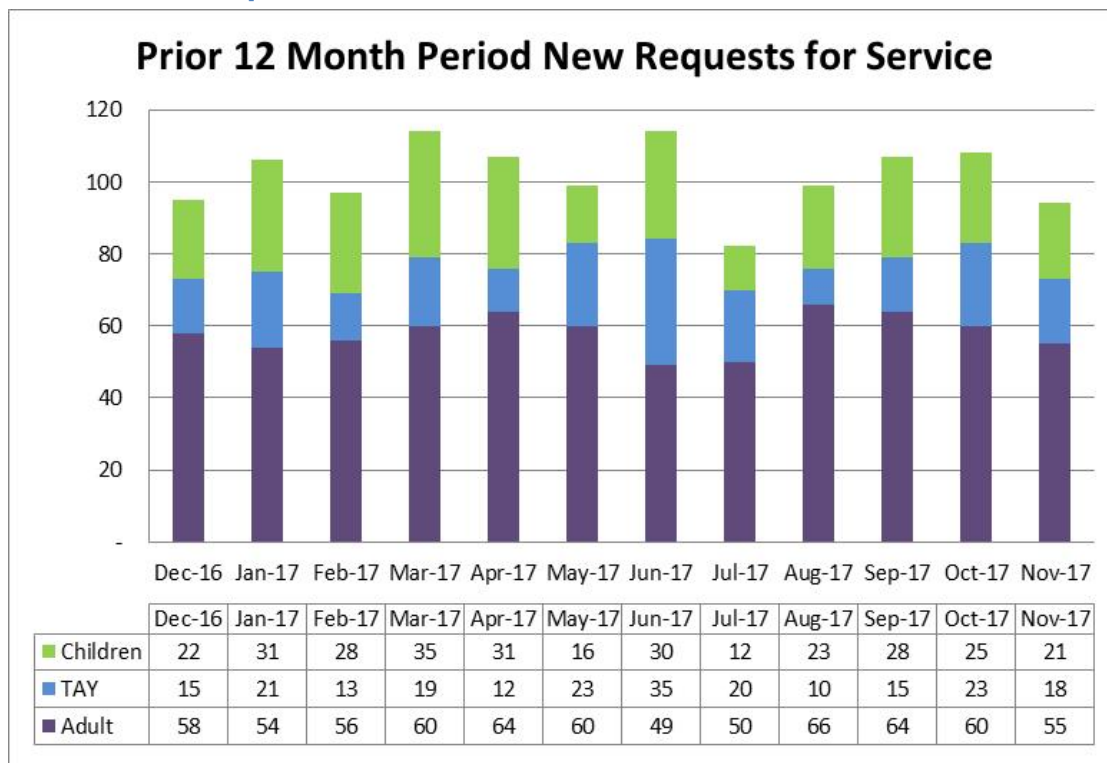
  

Adult Outpatient South Lake Tahoe	Clients	Adult Outpatient West Slope	Clients	Total
Clinic	46	Clinic	336	382
ICM/FSP	20	ICM/FSP	53	73
<b>Subtotal Adults</b>	<b>66</b>	<b>Subtotal Adults</b>	<b>389</b>	<b>455</b>

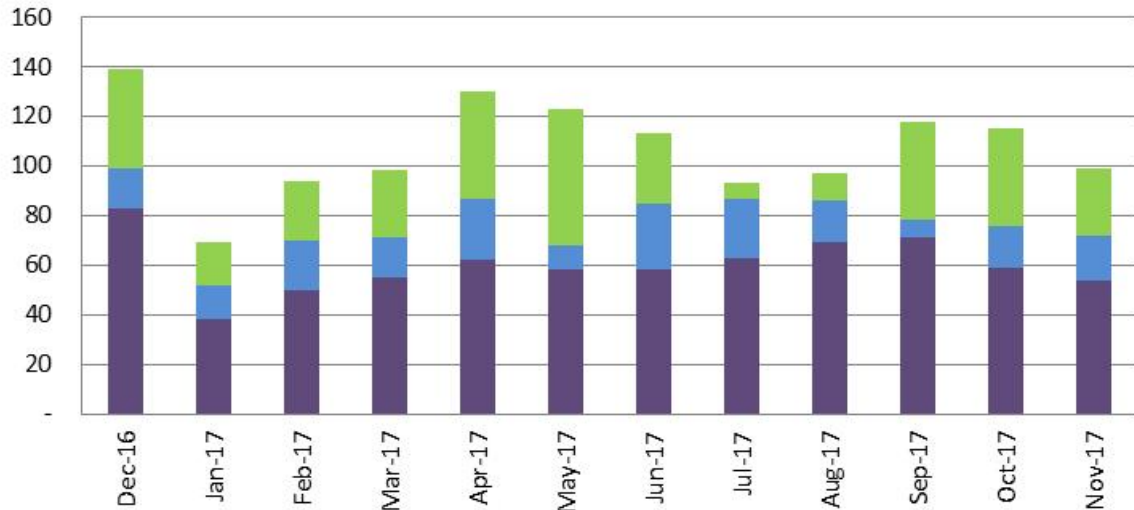
Total South Lake Tahoe	113	Total West Slope	662	755
------------------------	-----	------------------	-----	-----

### New Service Request Trends



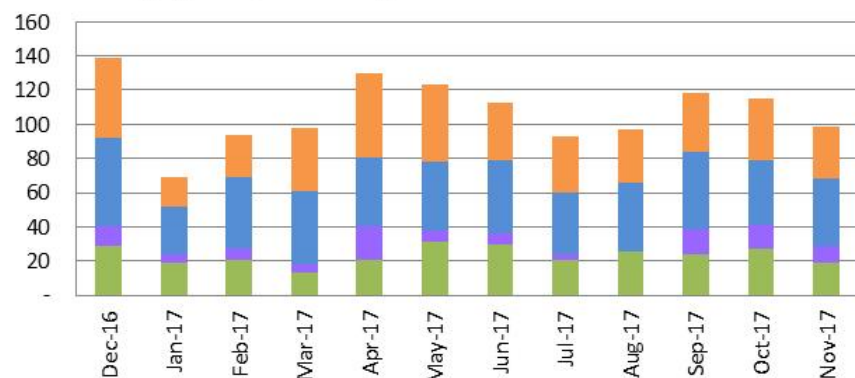
## Discharged Service Request Trends

**Prior 12 Month Period Discharged Requests for Service  
(by Age)**



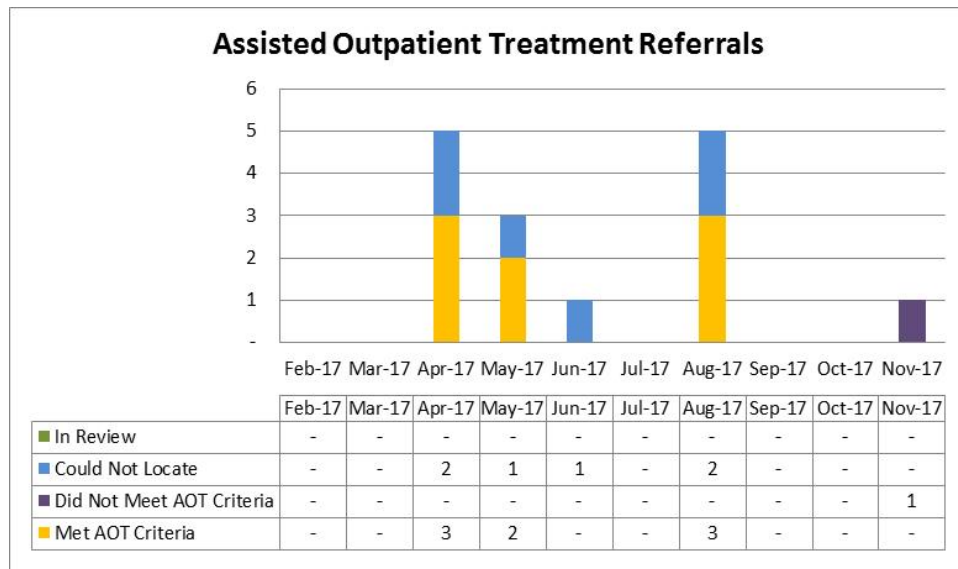
	Dec-16	Jan-17	Feb-17	Mar-17	Apr-17	May-17	Jun-17	Jul-17	Aug-17	Sep-17	Oct-17	Nov-17
Children	40	17	24	27	43	55	28	6	11	40	39	27
TAY	16	14	20	16	25	10	27	24	17	7	17	18
Adult	83	38	50	55	62	58	58	63	69	71	59	54

**Prior 12 Month Period Discharged Requests for Service  
(by Disposition)**



	Dec-16	Jan-17	Feb-17	Mar-17	Apr-17	May-17	Jun-17	Jul-17	Aug-17	Sep-17	Oct-17	Nov-17
Other	47	17	25	37	49	45	34	33	31	34	36	31
Does Not Meet Medical Necessity	52	28	42	43	41	40	43	36	40	45	38	39
To Other MH Provider	11	5	6	5	19	7	6	3	-	15	14	10
To BHD OP Services	29	19	21	13	21	31	30	21	26	24	27	19

## Assisted Outpatient Treatment: (Rhapsody Flores)



### Disposition of Referrals:

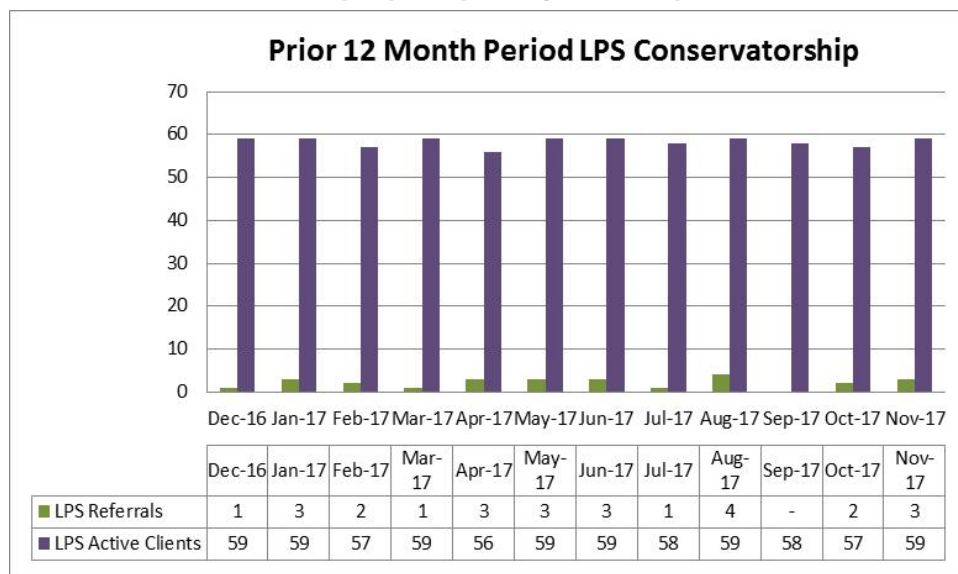
1 did not meet program criteria,  
 0 met initial program criteria,  
 0 individuals voluntarily accepted outpatient services,  
 0 individuals to proceed with the AOT process,  
 0 applications in review process

### Discharged AOT clients:

0 clients discharged:  
 0 to a lower level of service,  
 0 out of services

There are currently **2** AOT clients receiving services voluntarily.

## LPS Conservatorship: (Rhapsody Flores)



### LPS Active Clients:

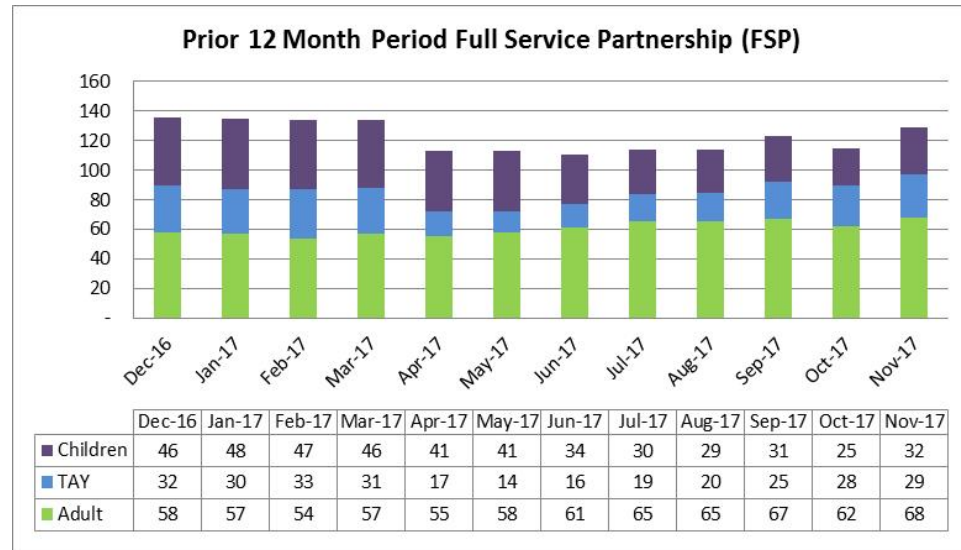
57 LPS Conservatorships  
 2 Temporary Conservatorships

### LPS Terminations:

0 LPS Terminations  
 1 Pending LPS Terminations



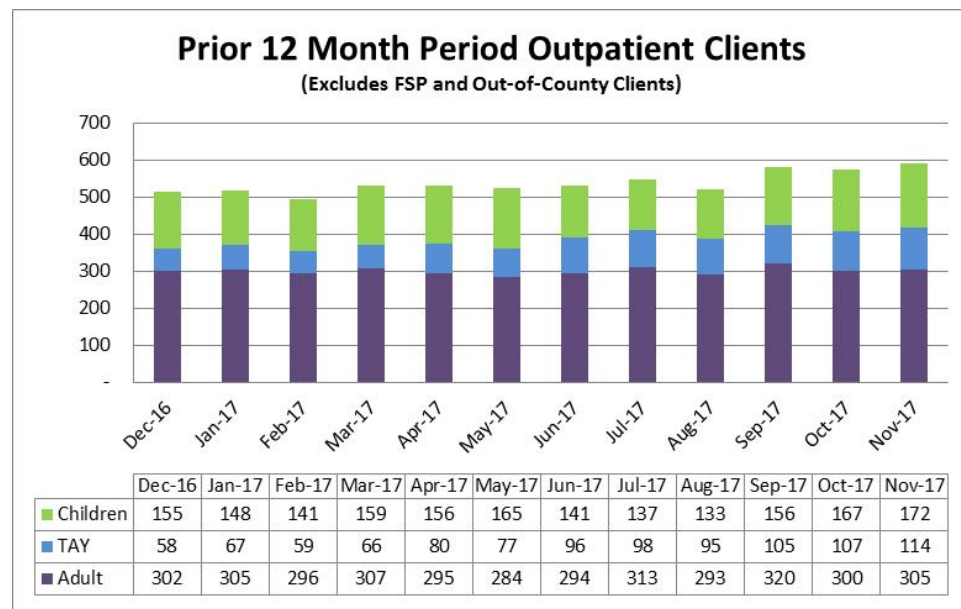
## Full Service Partnership (FSP) and Intensive Case Management (ICM) (Rhapsody Flores and Karen Naegeli)



### Intensive Case Management

- West Slope: Serving 39 clients
- SLT: Serving 16 clients

## Outpatient Services (excludes FSP and Out-of-County Placements)



### Discharges:

#### 18 Children discharged from all services

- 1 Tahoe
- 14 West Slope
- 0 Out of County

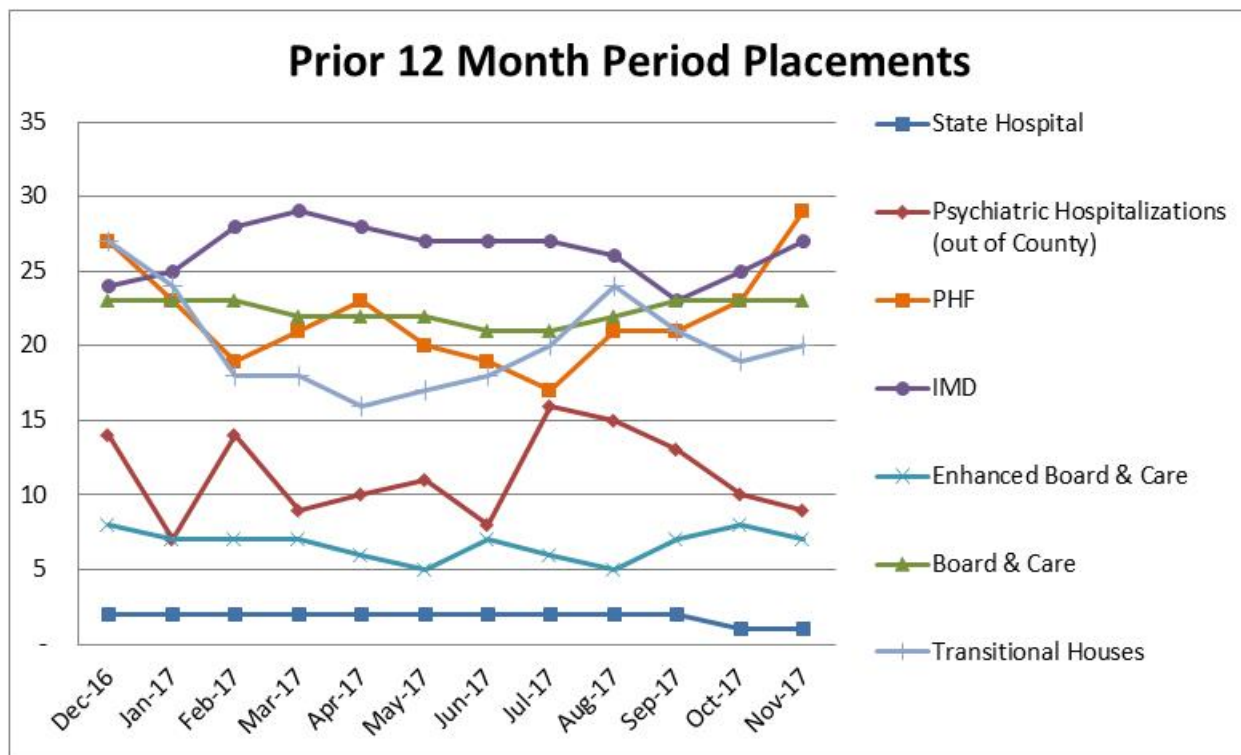
#### 14 TAY discharged from all services

- 5 Tahoe
- 9 West Slope
- 0 Out of County

#### 35 Adults discharged from all services

- 8 Tahoe
- 27 West Slope
- 0 Out of County

## PLACEMENTS



### Board and Care / IMDs / Secure Placements (Rhapsody Flores)

- 27 IMD beds - Crestwood/Canyon Manor/California Psychiatric Transitions (CPT)
- 1 State Hospital
- 7 Enhanced Board and Care beds including Willow Glen & Silver Ridge
- 23 Board and Care - Sacramento & Galt (including Grace Home)
- Total:
  - 52 Out of County Placements
  - 6 In County Placements (Silver Ridge)

### Transitions Treatment Program / MIOCR (Rhapsody Flores / Sabrina Owen)

- WS: 12 of 15 beds filled
- SLT: 8 of 12 beds filled:
  - T1 2 openings
  - T2 (MIOCR) 2 openings



## **Permanent Supportive Housing (Ren Scammon / Sabrina Owen)**

### **Trailside Terrace**

Clients receive services from the Wellness and Recovery team or from community based supports

- 5 of 5 units occupied
- Wait List:
  - 1 bedroom: 14
  - 2 bedroom: 6
  - 3 bedroom: 1

### **The Aspens at South Lake**

Clients receive ICM team coverage

- 6 of 6 units occupied
- Wait List: unknown
- The Aspens is a floating unit configuration based on household size rather than a specific number of apartments for each number of bedrooms

## **Psychiatric Health Facility (Jamie Samboceti)**

- There were 29 Admissions; 18 Admissions were El Dorado County residents and 11 were Out of County residents.
- There were 21 El Dorado County residents discharged; 13 to Home with Support, 5 to Home without support, 0 MHRC/IMD, 0 Board and Care, 0 to ICM T-House, 3 to Shelter, 2 to Other, and 0 to Emergency Department.
- Upon discharge, 20 El Dorado County residents were insured and 1 El Dorado County residents were pending insurance.
- There were 5\* Seclusion Episodes, 0 Physical Restraint Episodes (0 minutes), 0 Assaults (0 clients), 0 Elopements, 3\*\* Medication Errors (1 medication errors with no patient involvement), Client Surveys 28
- There were 6 denials of El Dorado County referrals:
  1. 1 Full no male beds
  2. 1 Placed on Med/Surg unit
  3. 1: Incontinent/Can't ambulate without assistance
  4. 1: Medicare Parts A & B
  - 5/6. 2: Primary Diagnosis of substance abuse disorder (same person x 2)
- Average daily census was 10.4 (range 8-14), with 8 average length of stay of days.

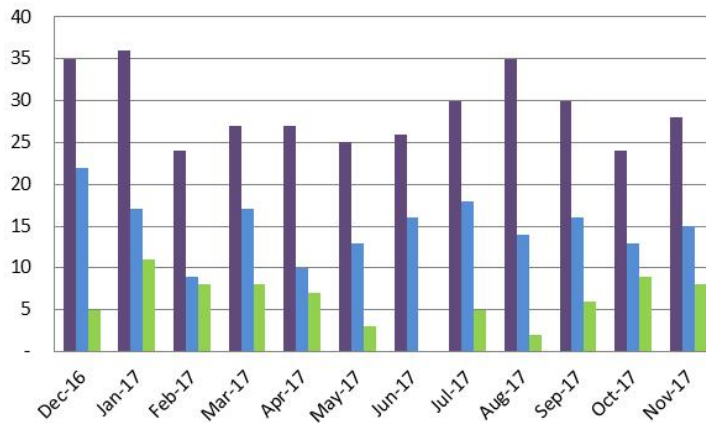
\* One patient for all five seclusions Verbally/physically aggressive towards staff and patients. (yelling, threatening, spitting, attempting to kick and hit)

\*\* Medication Errors: A medication ordered once a day was given twice in a 24 hour period. A medication was given with an identified medication allergy (patient stated she was allergic but she was not). Medication was not transcribed when order was written and the dose was increased. Order was found and transcribed before medication was due.

## CRISIS SERVICES

### Psychiatric Emergency Services (PES) (Sabrina Owen and Angie Larrigan)

Prior 12 Month Period Psychiatric Emergency Services - SLT



	Dec-16	Jan-17	Feb-17	Mar-17	Apr-17	May-17	Jun-17	Jul-17	Aug-17	Sep-17	Oct-17	Nov-17
Crisis Assessments	35	36	24	27	27	25	26	30	35	30	24	28
Hospitalizations	22	17	9	17	10	13	16	18	14	16	13	15
Referrals to Substance Use Treatment	5	11	8	8	7	3	-	5	2	6	9	8

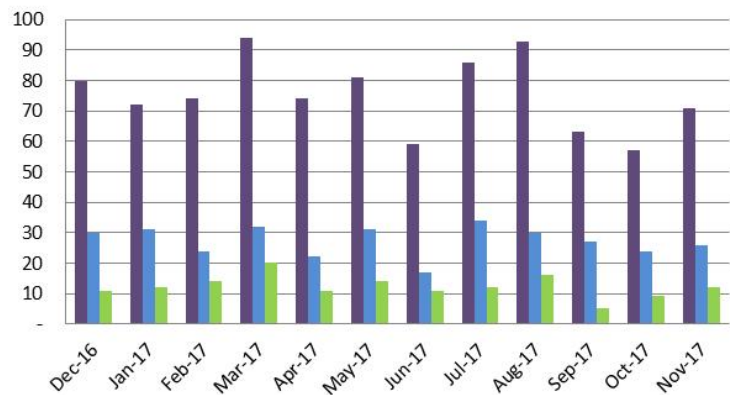
#### Crisis Assessments for Open Clients:

- SLT: 2
- West Slope: 10

#### Hospitalizations of Open Clients

- SLT: 2
- West Slope: 7

Prior 12 Month Period Psychiatric Emergency Services - WS



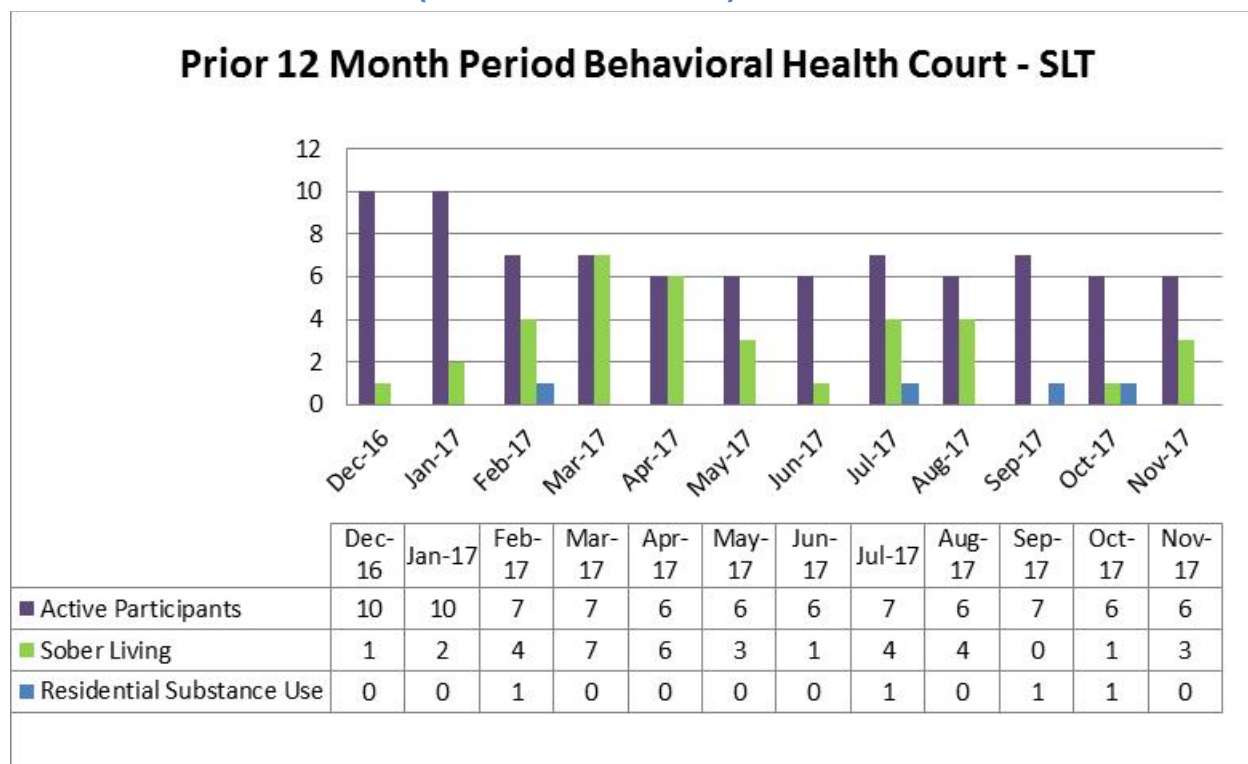
	Dec-16	Jan-17	Feb-17	Mar-17	Apr-17	May-17	Jun-17	Jul-17	Aug-17	Sep-17	Oct-17	Nov-17
Crisis Assessments	80	72	74	94	74	81	59	86	93	63	57	71
Hospitalizations	30	31	24	32	22	31	17	34	30	27	24	26
Referrals to Substance Use Treatment	11	12	14	20	11	14	11	12	16	5	9	12

## Crisis Intervention Teams (CIT) (Angie Larrigan and Sabrina Owen)

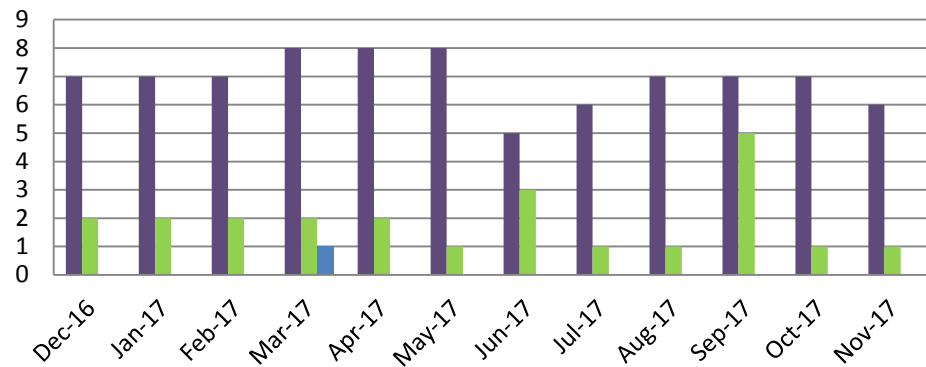
- There are no updates from the CIT for November, however the Behavioral Health staff continue to work closely with law enforcement to respond to community needs and engage individuals in mental health and/or substance use services.
- Through the MHSA PEI program “Community-Based Outreach and Linkage”, Behavioral Health is working on an Memorandum of Understanding (MOU) with the Sheriff’s office to establish a Psychiatric Emergency Response Team (PERT) on the West Slope of the County. The team should be operational in early 2018.

## JUSTICE SERVICES

### Behavioral Health Court (John Schumacher)



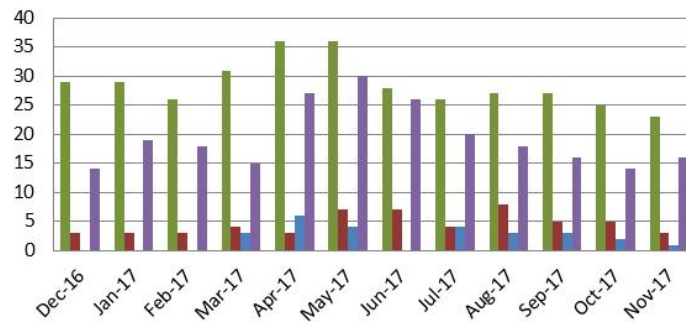
## Prior 12 Month Period Behavioral Health Court - WS



	Dec-16	Jan-17	Feb-17	Mar-17	Apr-17	May-17	Jun-17	Jul-17	Aug-17	Sep-17	Oct-17	Nov-17
Active Participants	7	7	7	8	8	8	5	6	7	7	7	6
Sober Living	2	2	2	2	2	1	3	1	1	5	1	1
Residential Substance Use	0	0	0	1	0	0	0	0	0	0	0	0

## AB 109 (John Schumacher)

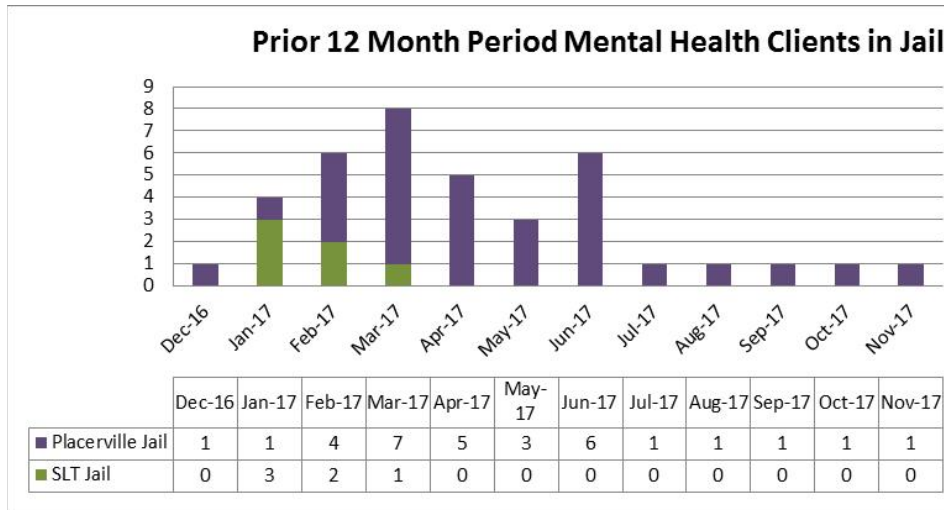
### Prior 12 Month Period AB 109 Client Services at the Community Corrections Center



	Dec-16	Jan-17	Feb-17	Mar-17	Apr-17	May-17	Jun-17	Jul-17	Aug-17	Sep-17	Oct-17	Nov-17
Substance Use Treatment @ CCC	29	29	26	31	36	36	28	26	27	27	25	23
Sober Living	3	3	3	4	3	7	7	4	8	5	5	3
Residential Substance Use	0	0	0	3	6	4	-	4	3	3	2	1
Mental Health Services	14	19	18	15	27	30	26	20	18	16	14	16

- 2 clients are receiving Substance Use Education services in the South Lake Tahoe jail. *Moral Reconation Therapy/SUD treatment on hold and will resume. The new Health Program Specialist recently completed training for MRT and is preparing to start services.*
- 19 clients are receiving Substance Use Disorder treatment in Placerville Jail.
- 4 client is receiving treatment from a contracted community provider in SLT.
- 2 clients are receiving treatment from a contracted community provider in Placerville.

## Mental Health Clients in Jail (Jamie Samboceti)



Count of Behavioral Health's existing clients that were receiving Specialty Mental Health Services at the time of their incarceration in the Placerville or SLT Jails only.

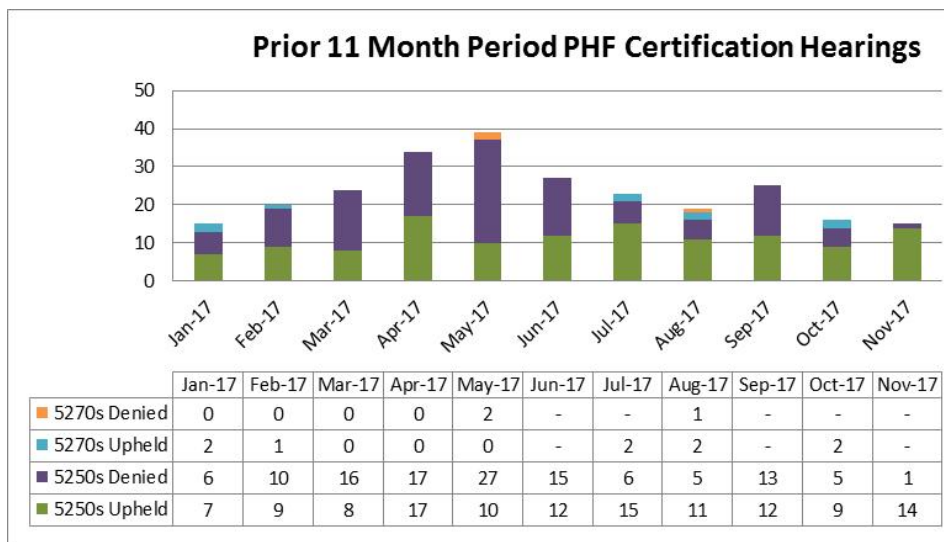
## Restoration of Competency (Rhapsody Flores)

- 0 Outpatient ROC referrals; 0 Jail ROC referral
- 1 client receiving ROC Outpatient services
- 0 client receiving ROC Inpatient services (CPT)

There were 2 clients receiving ROC services in jail. One completed the curriculum in October, the other in November. They were both released from jail in November.

## QUALITY ASSURANCE & PATIENT RIGHTS

### Patients' Rights Advocate (Dani Mills)



Certification hearings are held at the PHF on Mondays and Thursdays.

## Quality Improvement/Utilization Review (Ren Scammon)

- The Behavioral Health Division is developing the “Brief Model of Care Academy” for individuals who meet criteria for “Wellness and Recovery” services (this excludes individuals in the Full Service Partnership, Intensive Case Management, Restoration of Competency, and Assisted Outpatient Treatment programs), which is part of the County’s Clinical Performance Improvement Plan (PIP) (required by Medi-Cal for all counties to have active PIPs). The Brief Model of Care will provide an orientation for all new clients and an academy model of services that includes groups, individual services and medication management, as appropriate, targeted to the treatment needs of each new and existing client. The focus of the Academy is to support the wellness and recovery of our clients while developing resiliency and independence through goals directed toward program graduation and effective management of mental illness symptoms.
- As part of the Brief Model of Care, the Behavioral Health Division is developing a “Family and Community Monthly Meeting” to provide general (non-client specific) information to family members, individuals providing natural supports, and other interested members of the public about the types of services offered through Behavioral Health, what to expect when a family member is receiving Behavioral Health services, how to be involved with a family member’s treatment, and other pertinent topics.
- The “Annual Innovation Program and Evaluation Report” has been posted to the MHSA Plan web page and submitted to the Mental Health Services Oversight and Accountability Commission as required by the Innovation Regulations. To read the report, please visit:  
[https://www.edcgov.us/government/mentalhealth/mhsa/pages/mhsa\\_plans.aspx](https://www.edcgov.us/government/mentalhealth/mhsa/pages/mhsa_plans.aspx).

## Grievances/Appeals/Hearings (Ren Scammon)

Month Filed	Month Completed	Type	Topic	Location	Outcomes (Appeals / Hearings Only)
10-2017		Grievance	Access Request for a service provider not contracted with the County	WS Adult	
10-2017		Grievance	Access Request for a service provider not contracted with the County	WS Adult	
10-2017		Grievance	Access Request for a service provider not contracted with the County for services not allowable under Medi-Cal per State contract	WS Adult	
10-2017	11-2017	Grievance	Other Facility not clean	WS Adult	
10-2017	11-2017	Grievance	Other Use of slang vs. proper English	WS Adult	



Month Filed	Month Completed	Type	Topic	Location	Outcomes (Appeals / Hearings Only)
11-2017	12-2017	Grievance	Other Jail Release Processes	SLT Adult	--
11-2017		Hearing	Denial of Services Possible intellectual/neurocognitive delay; Client would not likely benefit from specialty mental health services as it would not likely improve or maintain his mental health status	SLT Adult	Hearing request on hold by the State pending State's receipt of proper documentation from Claimant
12-2017		Grievance	Other Communication preferences	WS Adult	
01-2018		Appeal	Denial of Services Possible intellectual/neurocognitive delay; Client would not likely benefit from specialty mental health services as it would not likely improve or maintain his mental health status	SLT Adult	

## PERFORMANCE IMPROVEMENT METRICS (reported quarterly)

Next Report Period: Quarter 2 (October through December 2017)

Reporting Month: February 2018

(delayed due to early date of January 2018 meeting)

## PROGRAM ACTIVITY UPDATES

### MENTAL HEALTH SERVICES ACT (MHSA) (Ren Scammon/Tami Smith/Heather Longo)

- Continuing Community Planning Process:

Date/Time	Host	Address
Thursday, January 18, 2018 9:30 a.m.	Commission on Aging	El Dorado Hills Community Services District, 1021 Harvard Way, El Dorado Hills (in the gym classroom)
Monday, January 29, 2018 5:30 p.m.	NAMI El Dorado Hills	El Dorado Hills Raley's Event Center (back of Isle 16), 3935 Park Drive, El Dorado Hills

- Year to Date MHSA Revenues (through November 2017): \$2,866,950.90.

## **OUTPATIENT SERVICES**

**(Sabrina Owen and Karen Naegeli (SLT); Lesly Van Sloten and Rhapsody Flores (WS))**

### **Wellness Center November Activities:**

Tahoe:

- A celebration of giving thanks was held November 22, including lots of food and mindfulness of all we have to be grateful for.

West Slope:

- Our annual "Fall Festival" took place on November 14th at the Firefighters' Memorial Hall in Diamond Springs. This was the first large scale event organized by Peer Leadership with some Behavioral Health Division Staff support. Peers organized, made the menu, cooked, baked, help set up, organized activities, served food, and helped clean-up. Everyone in attendance made a gratitude circle and shared what they felt they were grateful for and there was a Peer staffed gratitude table where thoughts, quotes, visions, hopes, dreams, accomplishments and blessings could be shared with sparkle and various art materials. The Wellness Center band, "The Dry Mangoes" performed. Approximately 130 community members were in attendance. It was a feast fit for king, lots of sharing, and a good time for all in attendance. One of our most difficult Clients said, "That was a fantastic party.... Good job everyone." Peer Leaders are busy planning the Holiday Party.

### **ICM - October Activities:**

Tahoe:

- Thanksgiving dinner, untraditional style, featuring spaghetti and meatballs was held for FSP clients on Thanksgiving for those who did not have plans to be with other family or friends.

West Slope:

- The Annual Thanksgiving Lunch was held for FSP clients at the Wellness Center on Thanksgiving day. There were 18 clients served. ICM staff also made sure that those that could not attend received food at their homes. In total, ICM staff served 22 clients.

### **Children's Services (Angie Larrigan)**

- Children's Services continue to follow the latest developments with the Continuum of Care Reform (CCR) and Medi-Cal Presumptive Transfer. The Behavioral Health Division is revising contract language with providers of Children's Services to incorporate the known requirements related to CCR and Presumptive Transfer.

### **TAY DBT/FEP Program (Sabrina Owen and Lesly Van Sloten)**

Tahoe

- Anastasia has two strong DBT groups going at South Tahoe High School and Tallac. California Conservation Corps group is scheduled to begin in December.

- The First Episode Psychosis program has two active clients. Substance use continues to be a major concern.

#### Placerville

- Kate facilitates three DBT Groups at Independence High School and two DBT Groups at Charter Community and she sees several of her group members in 1:1 sessions. Two DBT groups at Independence High School moved a few students around so that an all-male group could be created. Kate reports the all-male group is going really well.
- The FEP program has one active Client who is benefiting from individual and family therapy. Client and family have made remarkable progress.

## ADULT OUTPATIENT GROUP SCHEDULES

### WS Adult Outpatient Services

<b>Monday</b>	
BHC/Wellness - Check In Group	10:30 am - 11:30 am
Manage your Emotions Group (Anger Mgmt)	1:15 pm - 2:00 pm
Current Events Group	1:15 pm - 2:00 pm (Wellness/Peer Led)
Exercise Group	2:00 pm - 3:00 pm (Wellness/Peer Led)
Basic Conversation Skills	2:00 pm – 3:00 pm (Wellness)
Stress Reduction	3:00 pm - 4:00 pm (Wellness)
Play a Game Group	3:00 pm - 4:00 pm (Wellness)
Music Group	3:00 pm - 4:00 pm (Staff and Peer Led)
<b>Tuesday</b>	
Country Line Dancing (on hold til 2018)	12:00 – 1:00pm (Wellness)
Current Events Group	1:15 pm - 2:00 pm (Wellness/Peer Led)
Women's Co-Occurring Recovery Group	1:15 pm - 2:45 pm (ADP)
Art Group with Jan from NAMI	1:30 pm - 3:00 pm (Wellness)
Healthy Pleasures	1:30 pm - 2:30 pm (Wellness)
Job Connections Group	1:30 pm - 3:30 pm (Wellness)
Smoking Cessation	3:00 pm - 4:00 pm (Wellness)
<b>Wednesday</b>	
DBT Skills Group - Skills Training	10:00 am - 12:00 pm
SAMHSA - Medication Education	11:00 am - 12:00 pm (On Hold)
Transitional Housing Independent Living Skills	12:00 pm - 1:00 pm
Dual Recovery Anonymous - Peer Support Group	1:00 pm - 2:00 pm (Wellness)
Current Events Group	1:15 pm - 2:00 pm (Wellness/Peer Led)
Self-Care/ADLS Group	1:30 pm - 3:30 pm (Wellness)
Therapeutic Music Group	2:00 pm - 3:00 pm (Wellness)
Anger Management Group	2:00 pm - 3:00 pm
Physical Activity (1 mile walk)	3:00 pm - 3:45 pm (Wellness)
MH Peer Leadership Academy	3:00 pm - 4:00 pm, monthly, (Wellness)

<b>Thursday</b>	
Women's Trauma Group (using seeking safety)	10:00 am – 11:30 am
Country Line Dancing (on hold til 2018)	12:00 pm – 1:00 pm (Wellness)
Current Events Group	1:15 pm - 2:00 pm (Wellness/Peer Led)
Women's Co-Occurring Recovery Group	1:15 pm - 2:45 pm (Seeking Safety, ADP)
Healthy Pleasures	1:30 pm - 2:30 pm (Wellness)
Get Fresh Nutrition Classes - EDC PH	1:30 pm - 2:30 pm (Wellness)
Nutrition/Meal Planning group	In the T-houses on a rotating schedule
Crafts with the Textile Division	2:00 pm - 4:00 pm (Peer Led)
DBT Skills Group	2:30 pm – 3:30 pm
Life Skills Group	3:00 pm - 4:00 pm (Wellness/Peer Led)
Gardening Group 2x/Month	3:00 pm - 4:00 pm (Will Resume in June)
<b>Friday</b>	
DBT Group - Skills Training	10:00 am - 12:00 pm
Men's Co-Occurring Recovery Group	10:00 am - 12:00 pm (ADP)
Current Events Group	1:15 pm - 2:00 pm (Wellness/Peer Led)
Ted Talks and Cinema Club	1:30 pm - 3:30 pm (Wellness)
DBT Group - Skills Training	1:30 pm - 2:30 pm
Music Appreciation Group	2:00 pm - 3:00 pm (Wellness)
Mindfulness Group	2:45 pm - 3:30 pm (Wellness)

## SLT Adult Outpatient Services

<b>Monday</b>	
Seeking Safety (Co-Occurring)	11:00 am – 12:00 pm
DBT – Mindfulness	1:00 pm – 2:30 pm
DBT - Skill Building	1:30 pm - 2:30 pm (Wellness)
TED Talks - Information & Conversation	3:00 pm – 3:30 pm (Wellness)
Current Events Discussion	3:35 pm – 4:00 pm (Wellness)
<b>Tuesday</b>	
DBT - Distress Tolerance	1:00 pm - 2:30 pm
Anger Management	1:30 pm - 2:30 pm (Wellness)
Recovery through Art or Peer Leadership	3:00 pm - 3:30 pm (Wellness)
Just One Thing (Mindfulness)	3:35 pm - 4:00 pm (Wellness)
<b>Wednesday</b>	
DBT – Emotional Regulation	1:00 pm – 2:30 pm
Health Awareness/Cooking	1:30 pm - 2:00 pm (Wellness)
Refuge Recovery	3:00 pm – 3:30 pm (Wellness)
Healthy Relationship Skills	3:35 pm – 4:00 pm (Wellness)
<b>Thursday</b>	
Co-occurring Women's group	10:30 am - 12:00 pm (ADP)
Women's Group	1:00 pm – 2:30 pm
Community Excursions	1:00 pm - 4:00 pm (Wellness)
Movement Mindfulness	1:30 pm - 2:30 pm (Wellness)
Stress Management	3:00 pm - 3:30 pm (Wellness)

Social Awareness	3:35 pm - 4:00 pm (Wellness)
<b>Friday</b>	
BHC Group	12:30 pm - 1:00 pm
Volunteering	1:00 pm - 4:00pm (Wellness)
Recovery Through Art	1:30 pm - 2:30 pm (Wellness)
Paths to Recovery (Book Study)	3:00 pm - 3:30 pm (Wellness)
Leisure Skills	3:00 pm – 3:30 pm (Wellness)
Recovery Through Music	3:35 pm – 4:00 pm (Wellness)
Men's Wellness	2:30 pm - 4:00 pm
<b>Saturday</b>	
Friends 'n Fitness	11:00 am - 12:30 pm

## INITIALS & DEFINITIONS

Initials	Definition
AB	Assembly Bill
ACEs	Adverse Childhood Experiences
ADL	Activities of Daily Living
ADP	Alcohol and Drug Programs
AOT	Assisted Outpatient Treatment
APS	Adult Protective Services
ARF	Adult Residential Facility
B&C	Board and Care
BHC	Behavioral Health Court
BHD	Behavioral Health Division (formerly the Mental Health Division)
BOMUSD	Black Oak Mine Unified School District
BSCC	Board of State and Community Corrections
CalMHSA	California Mental Health Services Authority
CBHDA	California Behavioral Health Directors Association
CBO	Community Based Organization
CBT	Cognitive Behavior Therapy
CCC	Community Corrections Center or California Conservation Corps
CCP	Community Corrections Partnership
CCR	Continuum of Care Reform
CFMG	California Forensic Medical Group
CFR	Code of Federal Regulations
CFT	Children and Family Teams
CFTN	Capital Facilities and Technology Needs
CHP	California Highway Patrol
CIT	Crisis Intervention Team
CMS	Centers for Medicare & Medicaid Services
CPP	Community Planning Process
CPS	Child Protection Services
CPT	California Psychiatric Transitions
CSS	Community Services and Supports
DBT	Dialectical Behavior Therapy
DHCS	Department of Health Care Services (California)
DMC-ODS	Drug Medi-Cal Organized Delivery System
Dx	Diagnosis

ED	Emergency Department
EDC	El Dorado County
EDCMH	El Dorado County Mental Health
EDCSO	El Dorado County Sheriff's Office
EDSO	El Dorado Sheriff's Office
EDCVC	El Dorado Community Vision Coalition
EH	Extra Help
EPSDT	Early and Periodic Screening, Diagnosis and Treatment
EQRO	External Quality Review Organization
ER	Emergency Room
FEP	First Episode Psychosis
FSP	Full Service Partnership
FTE	Full-Time Equivalent
FY	Fiscal Year
HHSA	Health and Human Services Agency
HOT	Homeless Outreach Team
ICC	Intensive Care Coordination
ICM	Intensive Case Management
IHBS	Intensive Home-Based Services
IMD	Institution for Mental Disease (facility)
ITWS	Information Technology Web Services
Katie A.	<i>Katie A. vs. Bonta</i> Lawsuit and/or resulting programs/services
LL	Laura's Law
LOCUS	Level of Care Utilization System
LPS	Lanterman Petris Short
LT	Limited Term
LTCC	Lake Tahoe Community College
MDT	Multi-Disciplinary Team
MH	Mental Health
MHD	Mental Health Division
M-F	Monday through Friday
MHOAC	Mental Health Oversight and Accountability Commission
MHRC	Mental Health Rehabilitation Center (facility)
MHSA	Mental Health Services Act
MHW	Mental Health Worker
MIOCR	Mentally Ill Offender Crime Reduction
MOA	Medical Office Assistant
NM	New Morning Youth & Family
OP	Outpatient
PA	Physician Assistant
PATH	Projects for Assistance in Transition from Homelessness
PCP	Primary Care Physician
PD	Police Department
PEI	Prevention and Early Intervention
PES	Psychiatric Emergency Services
PG	Public Guardian
PHF	Psychiatric Health Facility
PIP	Primary Intervention Program or Program Improvement Plan
POC	Plan of Correction
PPD	Placerville Police Department
QI	Quality Improvement
QI/UR	Quality Improvement/Utilization Review
QIC	Quality Improvement Committee



RIF	Reduction in Force
RFI	Request for Information
RFP	Request for Proposal
ROC	Restoration of Competence
RV	Remi Vista
SAMHSA	Substance Abuse and Mental Health Services Administration
SB	Senate Bill
SCF	Sierra Child & Family
SLT	South Lake Tahoe
SLTPD	South Lake Tahoe Police Department
SO	Sheriff's Office
STHS	South Tahoe High School
STRTP	Short-Term Residential Therapeutic Program
SUD	Substance Use Disorders
SV	Summitview Child & Family
SYS	Stanford Youth Solutions
T-House	Transitional Housing
TAY	Transitional Age Youth
TBD	To Be Determined
TFC	Therapeutic Foster Care
TYFS	Tahoe Youth and Family Services
Tx	Treatment
TY	Tahoe Youth & Family
UR	Utilization Review
WET	Workforce Education and Training
WIA	Workforce Investment Act
WOIA	Workforce Innovations and Opportunities Act
WS	West Slope