



River Management Plan

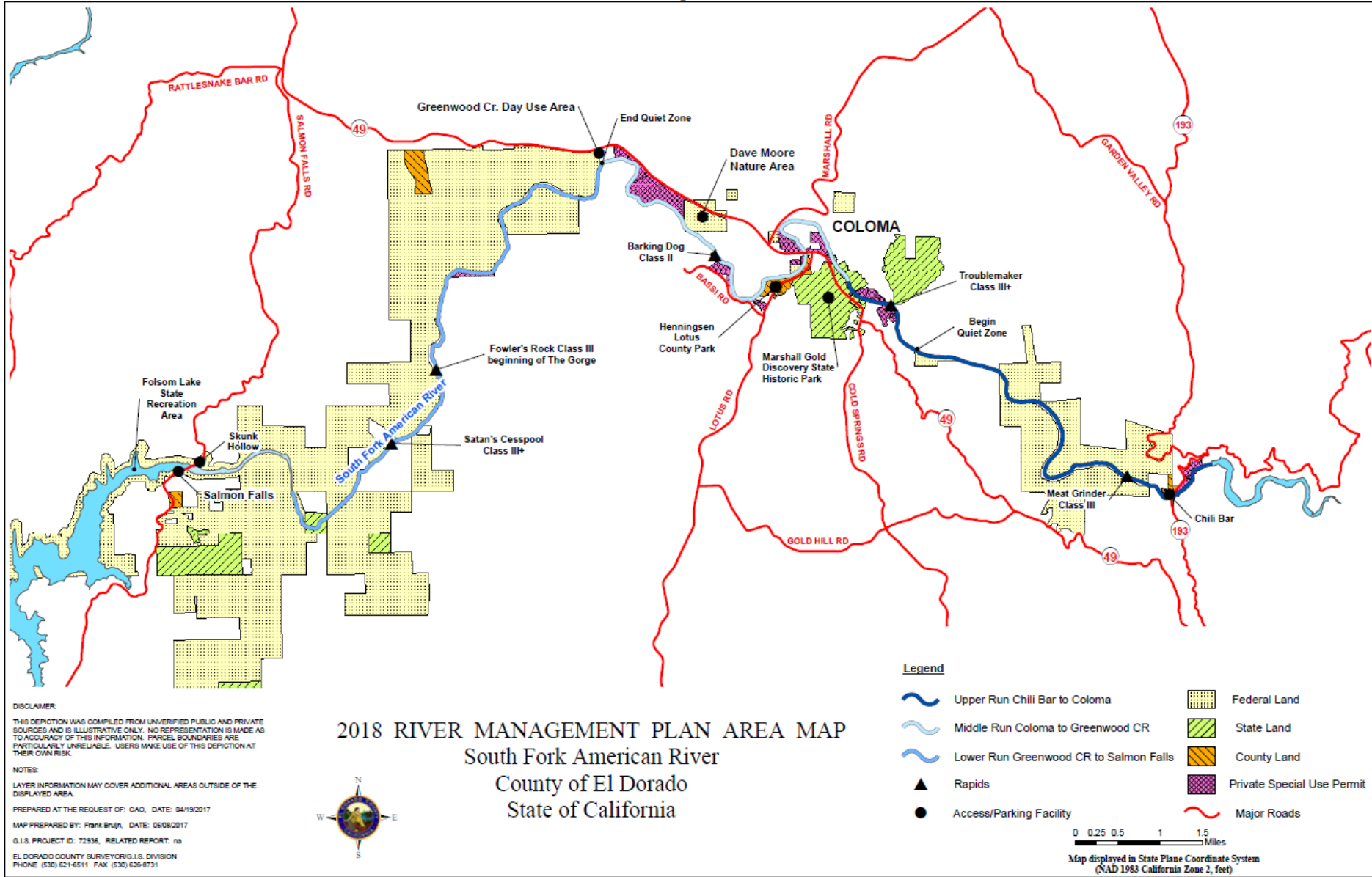
Introductions

Results of CEQA Analysis

Proposed

Adoption of the Negative Declaration

Figure 1



2018 RIVER MANAGEMENT PLAN AREA MAP
 South Fork American River
 County of El Dorado
 State of California

DISCLAIMER:
 THIS DEPICTION WAS COMPILED FROM UNVERIFIED PUBLIC AND PRIVATE SOURCES AND IS ILLUSTRATIVE ONLY. NO REPRESENTATION IS MADE AS TO ACCURACY OF THIS INFORMATION. PARCEL BOUNDARIES ARE PARTICULARLY UNRELIABLE. USERS MAKE USE OF THIS DEPICTION AT THEIR OWN RISK.

NOTES:
 LAYER INFORMATION MAY COVER ADDITIONAL AREAS OUTSIDE OF THE DISPLAYED AREA.

PREPARED AT THE REQUEST OF: CAO, DATE: 04/19/2017

MAP PREPARED BY: Frank Brulj, DATE: 05/08/2017

G.I.S. PROJECT ID: 72936, RELATED REPORT: na

EL DORADO COUNTY SURVEYOR/G.I.S. DIVISION
 PHONE (530) 621-6511 FAX (530) 626-8731

Legend

- Upper Run Chili Bar to Coloma
- Middle Run Coloma to Greenwood CR
- Lower Run Greenwood CR to Salmon Falls
- Rapids
- Access/Parking Facility
- Federal Land
- State Land
- County Land
- Private Special Use Permit
- Major Roads

0 0.25 0.5 1 1.5 Miles

Map displayed in State Plane Coordinate System (NAD 1983 California Zone 2, feet)

CEQA Analysis

- Initial Study and Negative Declaration (IS/ND)
Circulated on December 6, 2017
- Comments on the IS/MD
Were Received from December 6, 2017 to
January 5, 2018

CEQA Analysis

- Initial Study Concluded That No Significant Environmental Impacts Would Occur with the Implementation of the 2018 River Management Plan Update
- A CEQA Negative Declaration Was Prepared

CEQA Analysis

- Four Comment Letters Were Received
- Responses to All Comments Are Contained in the Final Negative Declaration

CEQA Action Proposed by Staff

- Adopt Negative Declaration

Questions and Answers

