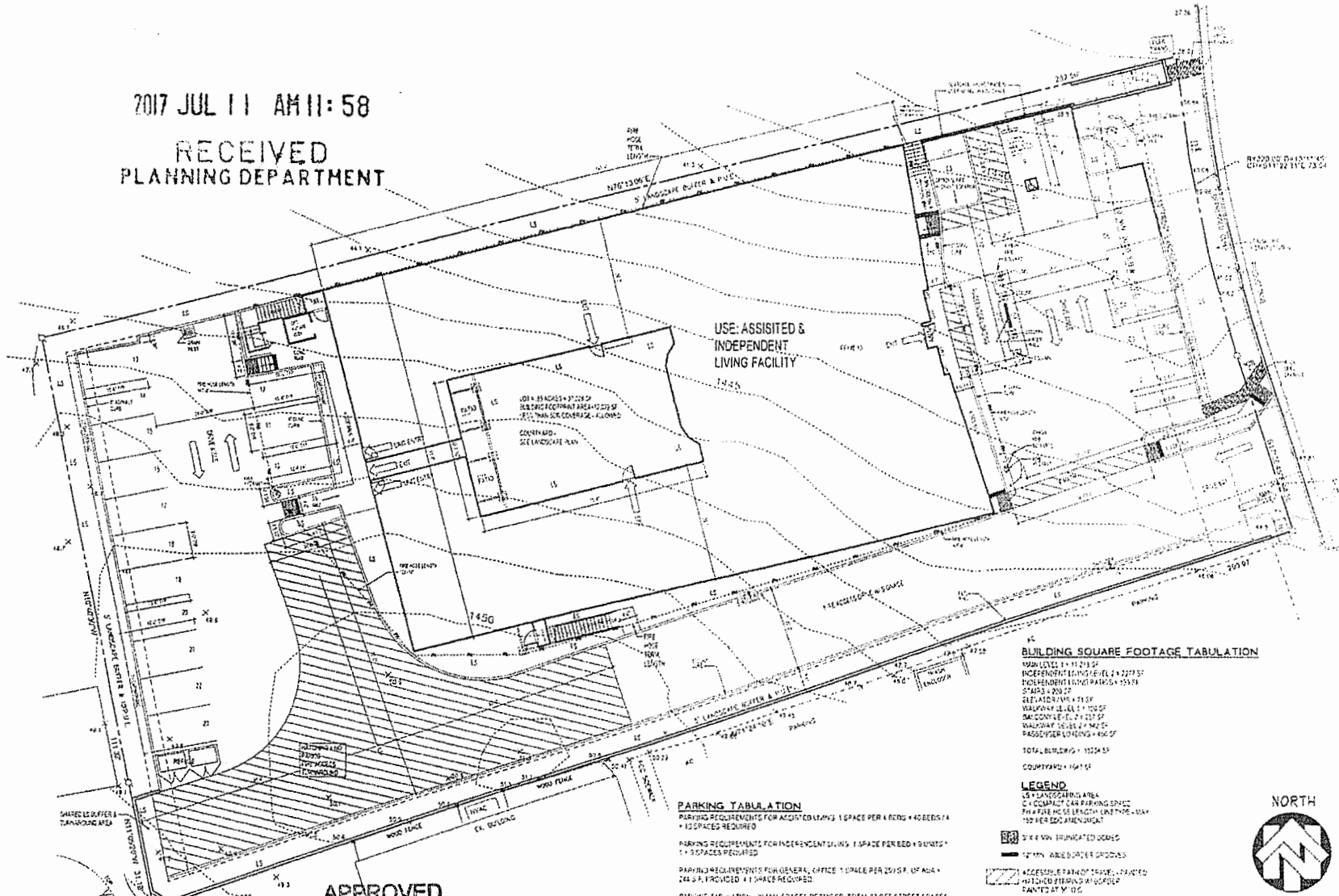


2017 JUL 11 AM 11:58

RECEIVED
PLANNING DEPARTMENT



USE: ASSISTED &
INDEPENDENT
LIVING FACILITY

BUILDING SQUARE FOOTAGE TABULATION

MAIN LEVEL	11,219 SF
INDEPENDENT LIVING LEVEL	1,277 SF
INDEPENDENT LIVING PATIO	1,538 SF
STAIRS	200 SF
ELEVATED WALKWAY	115 SF
WALKWAY LEVEL	1,100 SF
WALKWAY LEVEL	712 SF
WALKWAY LEVEL	942 SF
PASSENGER LOADING	604 SF
TOTAL BUILDING	15,298 SF
COURTYARD	1,647 SF

LEGEND

- LS = LANDSCAPING AREA
- C = COMPACT CAR PARKING SPACE
- PA = PARKING AREA LENGTH LINE (PA) - 10' X 20' PER SPOT (MINIMUM)
- ST = 8' X 10' TRUNCATED CURB
- ST = 12' X 10' TRUNCATED CURB
- AS = ACCESSIBLE PARKING SPACE - 8' X 12' (MINIMUM)
- AS = ACCESSIBLE PARKING SPACE - 12' X 12' (MINIMUM)
- AS = ACCESSIBLE PARKING SPACE - 15' X 20' (MINIMUM)
- AS = ACCESSIBLE PARKING SPACE - 18' X 20' (MINIMUM)
- AS = ACCESSIBLE PARKING SPACE - 20' X 20' (MINIMUM)
- AS = ACCESSIBLE PARKING SPACE - 24' X 20' (MINIMUM)
- AS = ACCESSIBLE PARKING SPACE - 30' X 20' (MINIMUM)
- AS = ACCESSIBLE PARKING SPACE - 36' X 20' (MINIMUM)
- AS = ACCESSIBLE PARKING SPACE - 40' X 20' (MINIMUM)
- AS = ACCESSIBLE PARKING SPACE - 48' X 20' (MINIMUM)
- AS = ACCESSIBLE PARKING SPACE - 54' X 20' (MINIMUM)
- AS = ACCESSIBLE PARKING SPACE - 60' X 20' (MINIMUM)
- AS = ACCESSIBLE PARKING SPACE - 66' X 20' (MINIMUM)
- AS = ACCESSIBLE PARKING SPACE - 72' X 20' (MINIMUM)
- AS = ACCESSIBLE PARKING SPACE - 78' X 20' (MINIMUM)
- AS = ACCESSIBLE PARKING SPACE - 84' X 20' (MINIMUM)
- AS = ACCESSIBLE PARKING SPACE - 90' X 20' (MINIMUM)
- AS = ACCESSIBLE PARKING SPACE - 96' X 20' (MINIMUM)
- AS = ACCESSIBLE PARKING SPACE - 102' X 20' (MINIMUM)
- AS = ACCESSIBLE PARKING SPACE - 108' X 20' (MINIMUM)
- AS = ACCESSIBLE PARKING SPACE - 114' X 20' (MINIMUM)
- AS = ACCESSIBLE PARKING SPACE - 120' X 20' (MINIMUM)
- AS = ACCESSIBLE PARKING SPACE - 126' X 20' (MINIMUM)
- AS = ACCESSIBLE PARKING SPACE - 132' X 20' (MINIMUM)
- AS = ACCESSIBLE PARKING SPACE - 138' X 20' (MINIMUM)
- AS = ACCESSIBLE PARKING SPACE - 144' X 20' (MINIMUM)
- AS = ACCESSIBLE PARKING SPACE - 150' X 20' (MINIMUM)
- AS = ACCESSIBLE PARKING SPACE - 156' X 20' (MINIMUM)
- AS = ACCESSIBLE PARKING SPACE - 162' X 20' (MINIMUM)
- AS = ACCESSIBLE PARKING SPACE - 168' X 20' (MINIMUM)
- AS = ACCESSIBLE PARKING SPACE - 174' X 20' (MINIMUM)
- AS = ACCESSIBLE PARKING SPACE - 180' X 20' (MINIMUM)
- AS = ACCESSIBLE PARKING SPACE - 186' X 20' (MINIMUM)
- AS = ACCESSIBLE PARKING SPACE - 192' X 20' (MINIMUM)
- AS = ACCESSIBLE PARKING SPACE - 198' X 20' (MINIMUM)
- AS = ACCESSIBLE PARKING SPACE - 204' X 20' (MINIMUM)
- AS = ACCESSIBLE PARKING SPACE - 210' X 20' (MINIMUM)
- AS = ACCESSIBLE PARKING SPACE - 216' X 20' (MINIMUM)
- AS = ACCESSIBLE PARKING SPACE - 222' X 20' (MINIMUM)
- AS = ACCESSIBLE PARKING SPACE - 228' X 20' (MINIMUM)
- AS = ACCESSIBLE PARKING SPACE - 234' X 20' (MINIMUM)
- AS = ACCESSIBLE PARKING SPACE - 240' X 20' (MINIMUM)
- AS = ACCESSIBLE PARKING SPACE - 246' X 20' (MINIMUM)
- AS = ACCESSIBLE PARKING SPACE - 252' X 20' (MINIMUM)
- AS = ACCESSIBLE PARKING SPACE - 258' X 20' (MINIMUM)
- AS = ACCESSIBLE PARKING SPACE - 264' X 20' (MINIMUM)
- AS = ACCESSIBLE PARKING SPACE - 270' X 20' (MINIMUM)
- AS = ACCESSIBLE PARKING SPACE - 276' X 20' (MINIMUM)
- AS = ACCESSIBLE PARKING SPACE - 282' X 20' (MINIMUM)
- AS = ACCESSIBLE PARKING SPACE - 288' X 20' (MINIMUM)
- AS = ACCESSIBLE PARKING SPACE - 294' X 20' (MINIMUM)
- AS = ACCESSIBLE PARKING SPACE - 300' X 20' (MINIMUM)

PARKING TABULATION

- PARKING REQUIREMENTS FOR ASSISTED LIVING: 1 SPACE PER 4 ROOMS + 40 BEDS + 10 SPACES REQUIRED
- PARKING REQUIREMENTS FOR INDEPENDENT LIVING: 1 SPACE PER BED + 10 UNITS + 10 SPACES REQUIRED
- PARKING REQUIREMENTS FOR GENERAL OFFICE: 1 SPACE PER 200 SF OF AREA + 24 SPACES PROVIDED + 10 SPACES REQUIRED
- PARKING TABULATION: 20 MIN SPACES REQUIRED, TOTAL 23 OFF STREET SPACES PROVIDED
- 1 SPACE ALLOWED FOR COMPACT CAR (10' X 20') + 450 COMPACT SPACES PROVIDED
- 1 SPACE IS REQUIRED TO BE ACCESSIBLE - 1 VAN ACCESSIBLE SPACE PROVIDED
- 18' X 20' PASSENGER BIRTH OFF AREA PROVIDED, WITH 1 X 20' ACCESSIBLE LOADING AREA

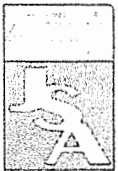
APPROVED
EL DORADO COUNTY
PLANNING COMMISSION

DATE June 14, 2018

BY Roger Trout/cst
EXECUTIVE SECRETARY

Exhibit F

S17-0011



JOHN S. FORD
ARCHITECT
2000 W. 10TH ST.
SANTA ANA, CA 92705

CLIENT: FOR BLISSFUL GARDENS
4210 PRODUCT DR.
SHINGLE SPRINGS, CA
APP#: 169-410-07
OWNER: RPA CONCEPTS, 3621
POWERS CT, EL DORADO HILLS, CA
PH: (925) 895-7117

SITE
PLAN



A2



SITE PLAN
SCALE 1/8" = 1'-0"