



COMMUNITY DEVELOPMENT SERVICES

DEPARTMENT OF TRANSPORTATION

<http://www.edcgov.us/DOT/>

PLACERVILLE OFFICES:

MAIN OFFICE:
2850 Fairlane Court, Placerville, CA 95667
(530) 621-5900 / (530) 626-0387 Fax

CONSTRUCTION & MAINTENANCE:
2441 Headington Road, Placerville, CA 95667
(530) 642-4909 / (530) 642-0508 Fax

LAKE TAHOE OFFICES:

ENGINEERING:
924 B Emerald Bay Road, South Lake Tahoe, CA 96150
(530) 573-7900 / (530) 541-7049 Fax

MAINTENANCE:
1121 Shakori Drive, South Lake Tahoe, CA 96150
(530) 573-3180 / (530) 577-8402 Fax

DATE: December 10, 2018

TO: All Prospective Bidders

SUBJECT: Addendum No. 1
Green Valley Road Slipout Repair Project, Contract No. 2776

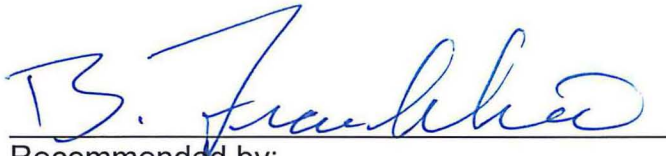
Submit proposals for this work with the understanding and full consideration of this Addendum. The revisions declared in this Addendum are essential parts of the Contract.

ITEM NO.	LOCATION, PAGE, OR DRAWING NO.	DESCRIPTION OF CHANGE
1.01	Cover N-1	Bidders are instructed to replace the bid opening date of December 12, 2018 with the following in the following locations: Cover: December 19, 2018 1 st paragraph on N-1: December 19, 2018 2 nd paragraph on N-1: December 19, 2018
1.02	N-1	Bidders are instructed to replace "TWENTY (20)" in item C in the 3 rd paragraph on page N-1 of the Notice to Bidders with "SIXTY (60)".
1.03	SP-61	Bidders are instructed to delete section 46-3.01D(2)(b)(ii)(3) from page SP-61 of the special provisions.
1.04	Plan Sheets S-2, S-3, and S-4	Bidders are instructed to replace plan sheets S-2, S-3, and S-4 with the attached S-2, S-3, and S-4 plan sheets.

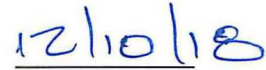
Indicate receipt of this Addendum by filling in the number of this Addendum in the space provided on the signature page of the Proposal. Holders who have already mailed their Proposal can contact Jennifer Rimoldi at 530-621-7592 (email: jennifer.rimoldi@edcgov.us) to arrange return of their Proposal. Inform all suppliers and subcontractors as necessary.

The Community Development Services, Department of Transportation is only sending this addendum by posting on QuestCDN's website at: <https://www.questcdn.com/>. If you are not

a Contract Documents holder, but request a set of documents to bid on this Project, you must comply with the requirements of this Addendum when submitting your bid.



Recommended by:
Matt Smeltzer, Deputy Director,
Fairlane Engineering



Date



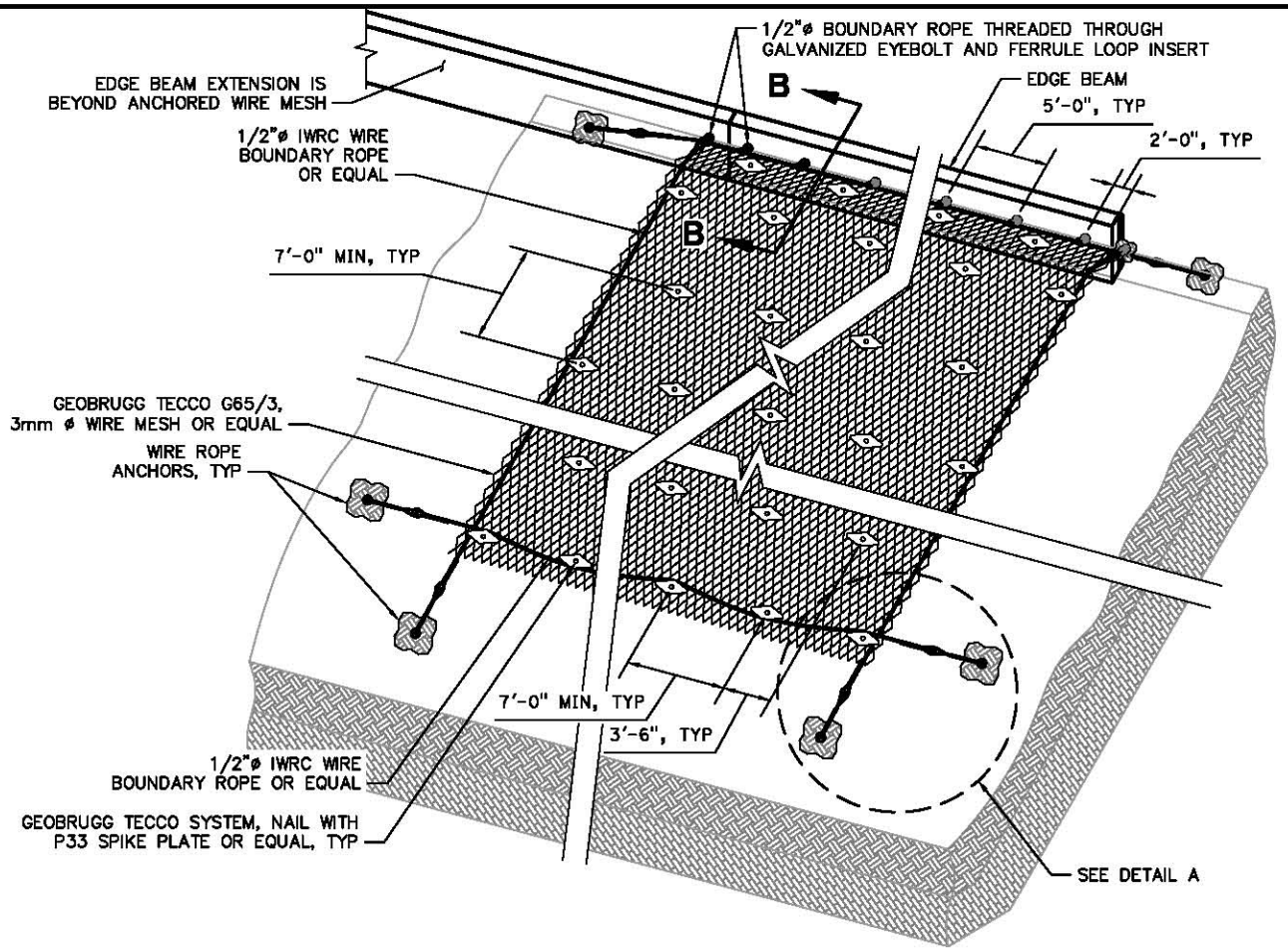
Approved by:
Rafael Martinez, Director
Department of Transportation



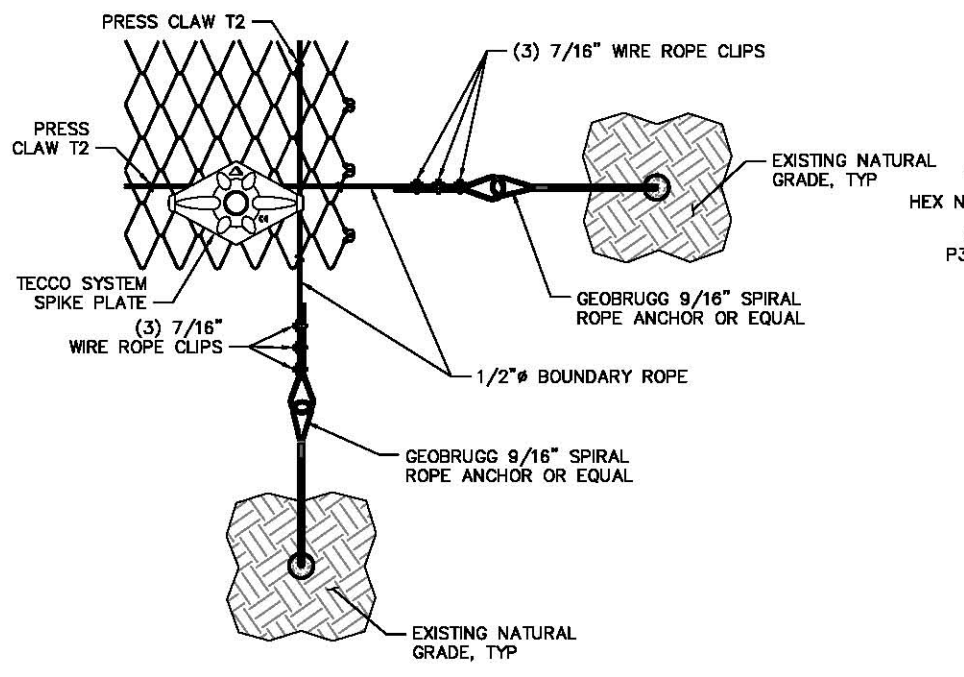
Date

End of Addendum No. 1

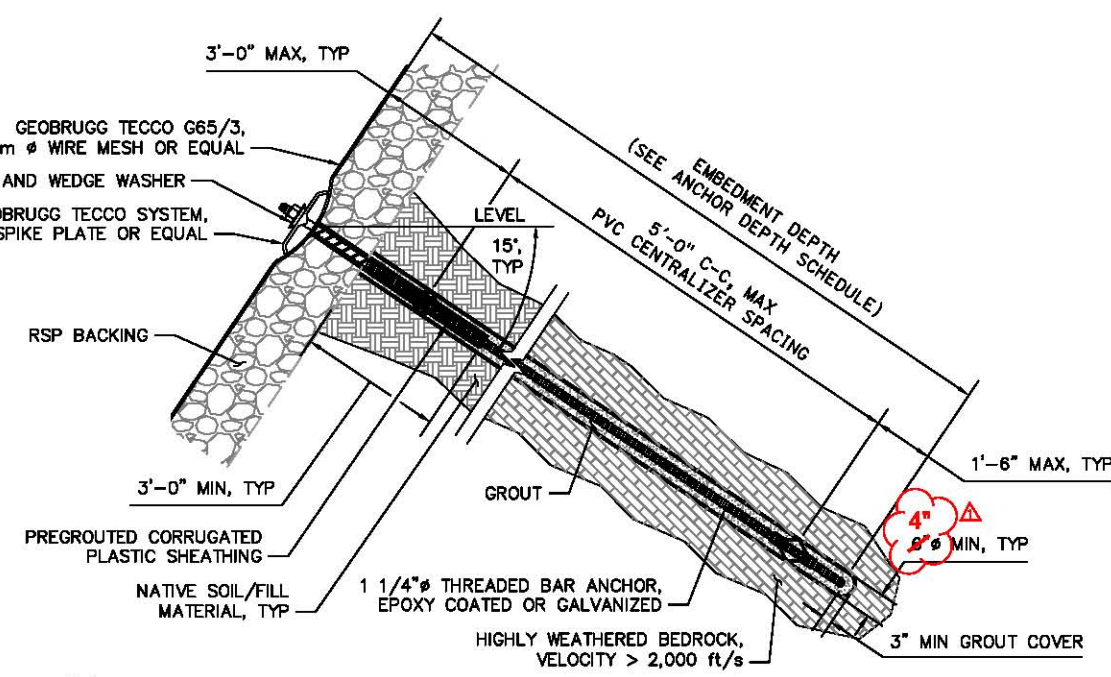
ORIGINAL SCALE IS IN INCHES
 Drawing name: I:\Sacramento\Projects\710102.00\600_CADD\05_Official\01_Sheets\Details2016.dwg
 Layout Tab: Layout1
 Sep 25, 2018 11:09am tkoons
 FOR REDUCED PLANS
 2
 1
 0



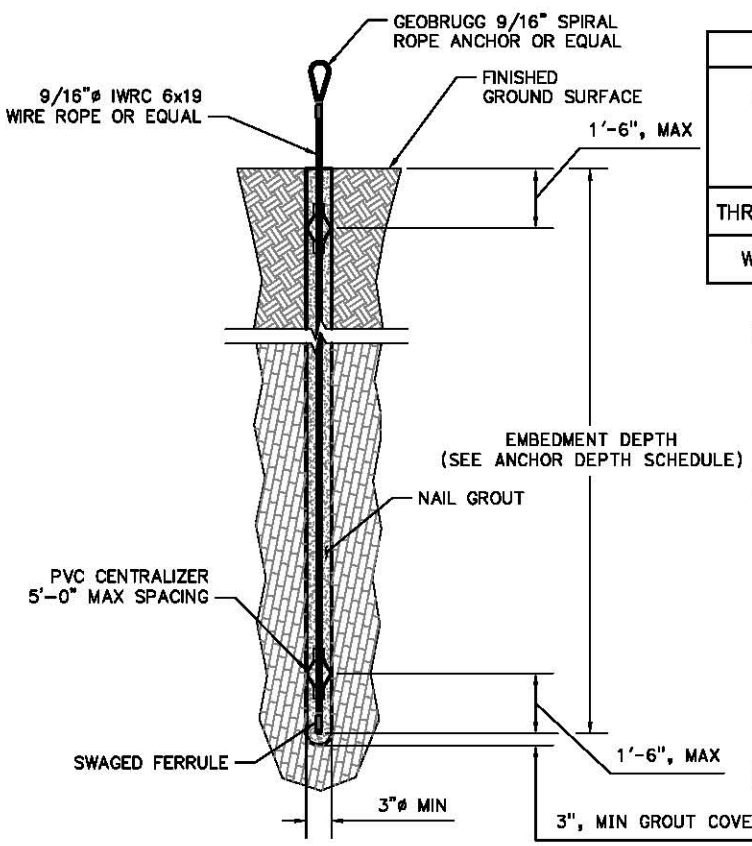
1 WIRE MESH GENERAL LAYOUT DETAIL
SCALE: NTS



A DETAIL
SCALE: NTS



3 PRODUCTION SOIL NAIL DETAIL OVER WIRE MESH
SCALE: NTS



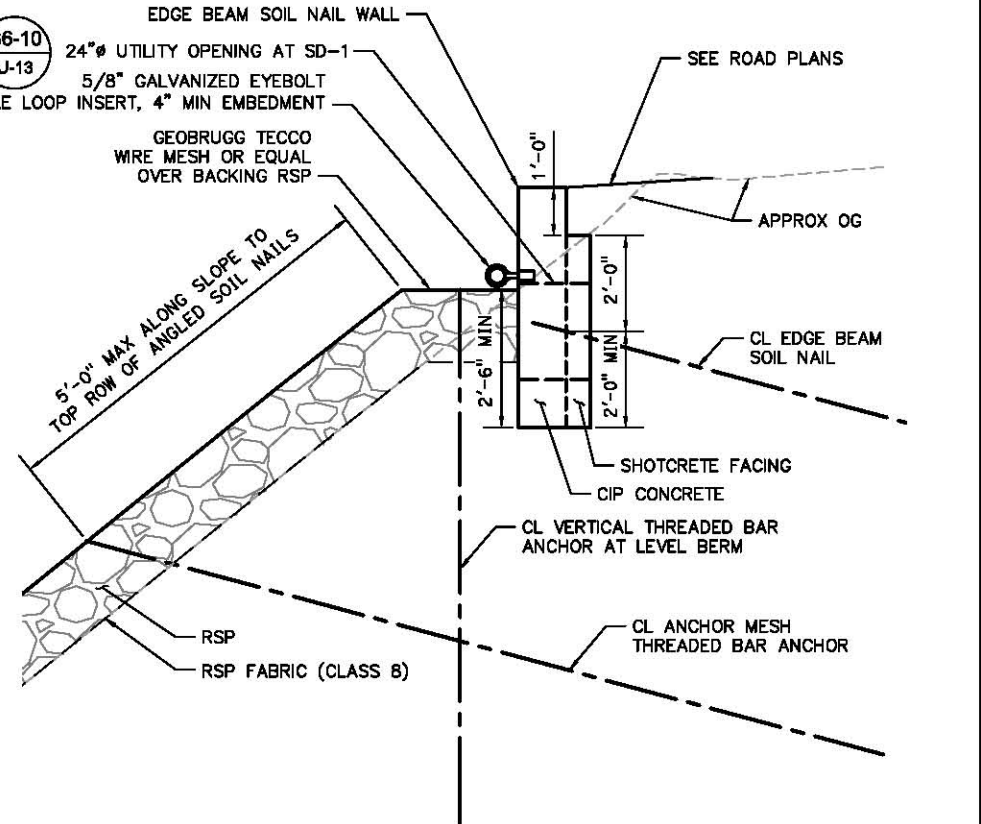
2 WIRE ROPE ANCHOR DETAIL
SCALE: NTS

ANCHOR DEPTH SCHEDULE						
ANCHOR TYPE	BOREHOLE DIAMETER (in)	MINIMUM EMBEDMENT DEPTH (ft)	*TOTAL LENGTH (ft)	DESIGN LOAD (kips)	**ANCHOR EMBEDMENT RESISTANCE (kips/ft)	PERFORMANCE TEST LOAD (kips)
THREADED-BAR	4	30.0	31.0	25	14.1	34
WIRE ROPE	3	20.0	20.5	12	7.0	N/A***

- SCHEDULE NOTES:**
- ANCHOR DEPTHS SPECIFIED ARE PER ANCHOR.
 - (*) TOTAL LENGTH OF THREADED-BAR OR WIRE ROPE ANCHOR.
 - (**) ANCHOR EMBEDMENT RESISTANCE IN COMPETENT MATERIAL, WITH VELOCITY > 2,000 ft/s
 - (***) WIRE ROPE ANCHORS DO NOT REQUIRE TESTING.

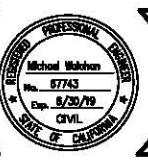
- THREADED-BAR AND WIRE ROPE ANCHOR NOTES:**
- THREADED-BAR ANCHORS WILL BE PRE-TENSIONED TO A FORCE OF 6.75 kips (30 kN) WITH A REQUIRED TORQUE VALUE OF 295ft-LBF (40 kNm) PER ANCHOR. SEE PROJECT SPECIFICATIONS FOR TORQUE WRENCH REQUIREMENTS.
 - 10% OF THE THREADED-BAR ANCHORS WILL BE PERFORMANCE TESTED. PER PROJECT SPECIFICATIONS AT LOCATIONS TO BE DETERMINED BY THE ENGINEER.
 - ANCHOR TESTING WILL BE COMPLETED UNDER OBSERVATION BY THE ENGINEER.
 - WIRE ROPE ANCHORS SHALL BE INSTALLED PERPENDICULAR TO THE SLOPE FACE.

- SYSTEM LAYOUT NOTES:**
- GEOBRUGG TECCO SLOPE STABILIZATION SYSTEM LAYOUT DIMENSIONS ARE APPROXIMATE. LOCATIONS SHALL BE VERIFIED IN THE FIELD BY THE ENGINEER PRIOR TO START OF CONSTRUCTION.
 - SEE PLAN VIEW ON SHEET 1 FOR LIMITS OF TECCO MESH AND EDGE BEAM SOIL NAIL WALL.



SECTION B-B SLOPE REINFORCEMENT DETAILS NO. 1
SCALE: NTS

REVISION	NUMBER	DATE	DESCRIPTION	BY



PREPARED UNDER THE SUPERVISION OF:
Michael Wilbur
 REGISTERED CIVIL ENGINEER
 DATE: 8/28/2018

DESIGNED: MP
 DRAWN: TAK
 CHECKED: MW
 DATE: 5/8/18
 ROAD NUMBER:

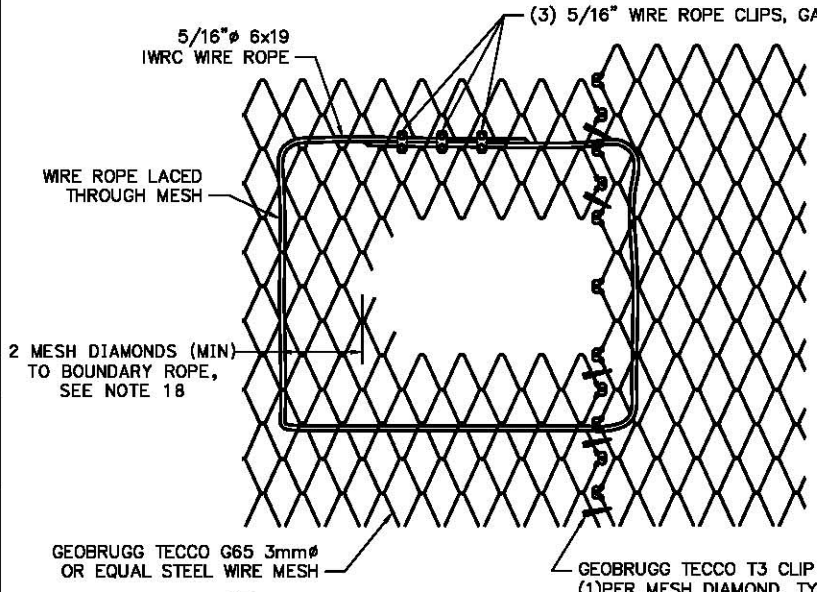


COUNTY OF EL DORADO
 DEPARTMENT OF TRANSPORTATION

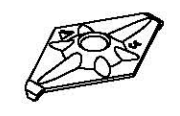
GREEN VALLEY ROAD
 SLIPOUT REPAIR

SHEET
S-2
 6 OF 8
 W.D. No. 78707

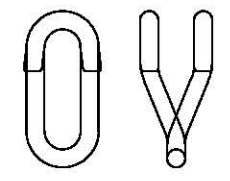
ORIGINAL SCALE IS IN INCHES
 Drawing name: I:\Sacramento\Projects\710102.00\600_CADD\05_Official\01_Sheets\Details\2016.dwg
 Layout Tab: Layout2
 Sep 25, 2018 11:13am tkoons
 FOR REDUCED PLANS
 2
 1
 0



4 WIRE MESH OPENING DETAIL
SCALE: NTS



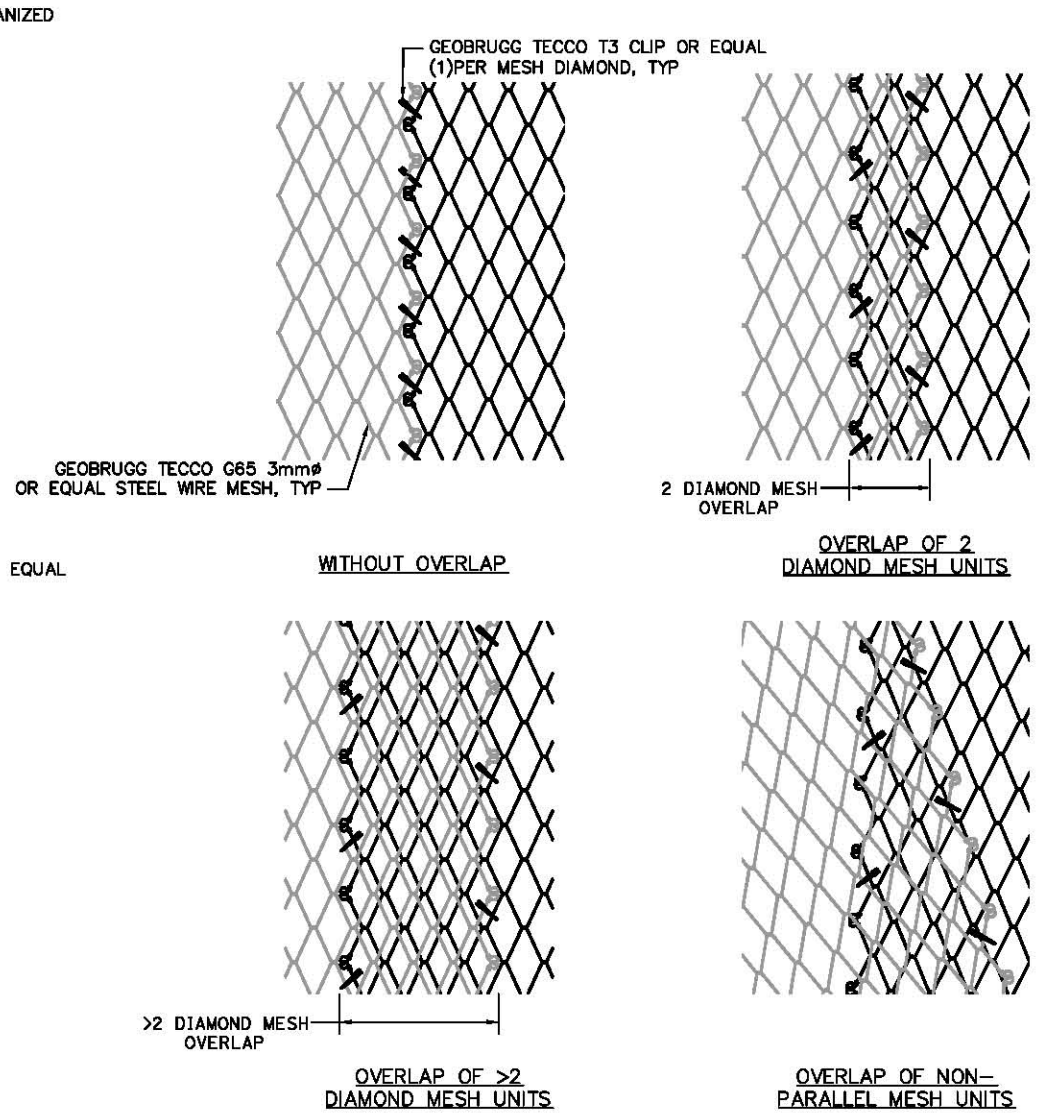
5 TECCO SYSTEM SPIKE PLATE P33
SCALE: NTS



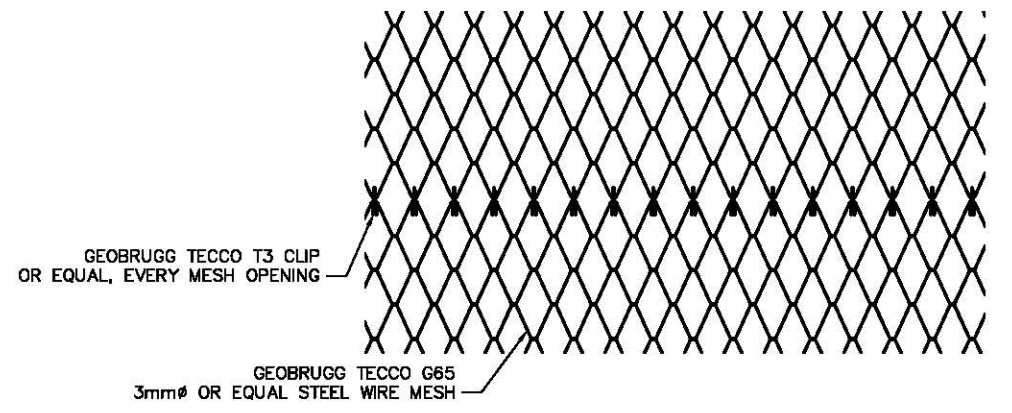
6 PRESS CLAW T2
SCALE: NTS



7 CONNECTION CLIP T3
SCALE: NTS



8 VERTICAL WIRE MESH CONNECTION DETAIL OPTIONS
SCALE: NTS



9 HORIZONTAL WIRE MESH CONNECTION DETAIL
SCALE: NTS

GEOBRUGG TENSIONED TECCO SYSTEM NOTES:

1. ALL MATERIALS SHALL COMPLY WITH THE PROJECT SPECIFICATION REQUIREMENTS.
2. ALL MATERIALS SHALL BE CORROSION RESISTANT PER PROJECT SPECIFICATIONS.
3. WIRE MESH SHALL BE GEOBRUGG TECCO G65/3 3mm DIAMETER HIGH STRENGTH STEEL WIRE MESH OR EQUAL.
4. TECCO SPIKE PLATES OR EQUAL SHALL BE INSTALLED HORIZONTALLY AS SHOWN ON THE DRAWINGS.
5. TECCO SPIKE PLATES OR EQUAL SHALL BE FITTED TO THE THREAD-BAR ANCHOR WITH HEAVY DUTY HEXAGONAL NUT WITH A WASHER.
6. SPIKE PLATES SHALL BE PRE-TENSIONED BY TIGHTENING OF THE HEAVY DUTY NUT AND MESH BE FIRMLY TENSIONED ONTO THE SURFACE MATERIAL.
7. THREADED-BAR ANCHORS SHALL BE PRE-TENSIONED TO A FORCE OF 6.75 kips (30 kN) WITH A REQUIRED TORQUE VALUE OF 258 ft-LBF (0.35 kNm) PER ANCHOR.
8. THREADED-BAR ANCHORS SHALL BE 1 1/4in (32mm) DIAMETER GRADE 75ksi STEEL WILLIAMS FORM THREAD-BAR OR EQUIVALENT.
9. BOUNDARY ROPES SHALL BE CONNECTED TO THE MESH USING TYPE 2 COMPRESSION CLAWS OR EQUIVALENT.
10. SPIKE PLATES SHALL BE INSTALLED ON THE INSIDE OF THE BOUNDARY ROPES AS SHOWN ON THE DRAWINGS AND GEOBRUGG TECCO SYSTEM PRODUCT MANUAL SECTION 11.8 "MESH EDGES".
11. TECCO MESH OR EQUAL END PANEL CONNECTIONS SHALL BE CONNECTED USING THE METHODS SHOWN IN DETAILS 4, 8 AND 9.
12. COMPRESSION CLAWS SHALL BE INSTALLED;
 - 12.1 TOP BOUNDARY ROPE (AT EDGE BEAM) - EVERY THIRD INDIVIDUAL MESH
 - 12.2 BOTTOM BOUNDARY ROPE - EVERY THIRD INDIVIDUAL MESH.
 - 12.3 SIDE BOUNDARY ROPES - EVERY SECOND INDIVIDUAL MESH.
13. IF SOIL IS DETERMINED AT THE THREAD-BAR ANCHOR LOCATION, THREAD-BAR ANCHORS SHALL BE RECESSED PER GEOBRUGG TECCO SYSTEM PRODUCT MANUAL SECTION 10.3.
14. 1/2" (12mm) Ø WIRE ROPE
 - 14.1 REQUIRED WIRE ROPE CLIPS = 4 PER WIRE ROPE LOOP
 - 14.2 EACH WIRE ROPE CLIP SPACING = 2-3 INCHES
 - 14.3 WIRE ROPE CLIP TIGHTENING TORQUE = 40 ft-LBF (55 Nm)
 - 14.4 WIRE ROPE TAIL (AFTER LAST WIRE ROPE CLIP) = 9 INCHES MINIMUM
15. FASTENING OF WIRE BOUNDARY ROPES TO WIRE ROPE ANCHORS SHALL BE PERFORMED PER PRODUCT MANUAL SECTION 11.9.
16. ALL MISCELLANEOUS MATERIALS INCLUDING WIRE ROPE CLIPS, THIMBLES, SHACKLES, SWAGED FERRULES, SHALL BE SUPPLIED BY THE VENDOR, AND GALVANIZED.
17. THREAD-BAR ANCHORS SHALL BE PERFORMANCE TESTED PER PROJECT SPECIFICATIONS. ~~A MINIMUM OF THREE (3) TOTAL THREADED BAR ANCHORS SHALL BE TESTED OR AT THE DISCRETION OF THE ENGINEER OF RECORD.~~
18. FOR MESH INSTALLATION AROUND TREES, UTILITY POLES, AND EXISTING CULVERTS SEE GEOBRUGG TECCO SYSTEM PRODUCT MANUAL SECTION 14.5.1 "HOLES FOR TREES".
19. THE CONTRACTOR SHALL REMOVE ALL LOOSE AND/OR UNSTABLE ROCK (I.E. SCALING) AS NEEDED IN ORDER TO ENSURE THE STABILIZATION SYSTEM CAN BE INSTALLED ADEQUATELY AND FUNCTION AS DESIGNED.

REVISION	NUMBER	DATE	DESCRIPTION	BY



PREPARED UNDER THE SUPERVISION OF:
Michael Wilbur
 REGISTERED CIVIL ENGINEER
 DATE: 8/28/2018

DESIGNED: MP
 DRAWN: TAK
 CHECKED: MW
 DATE: 5/8/18
 ROAD NUMBER:



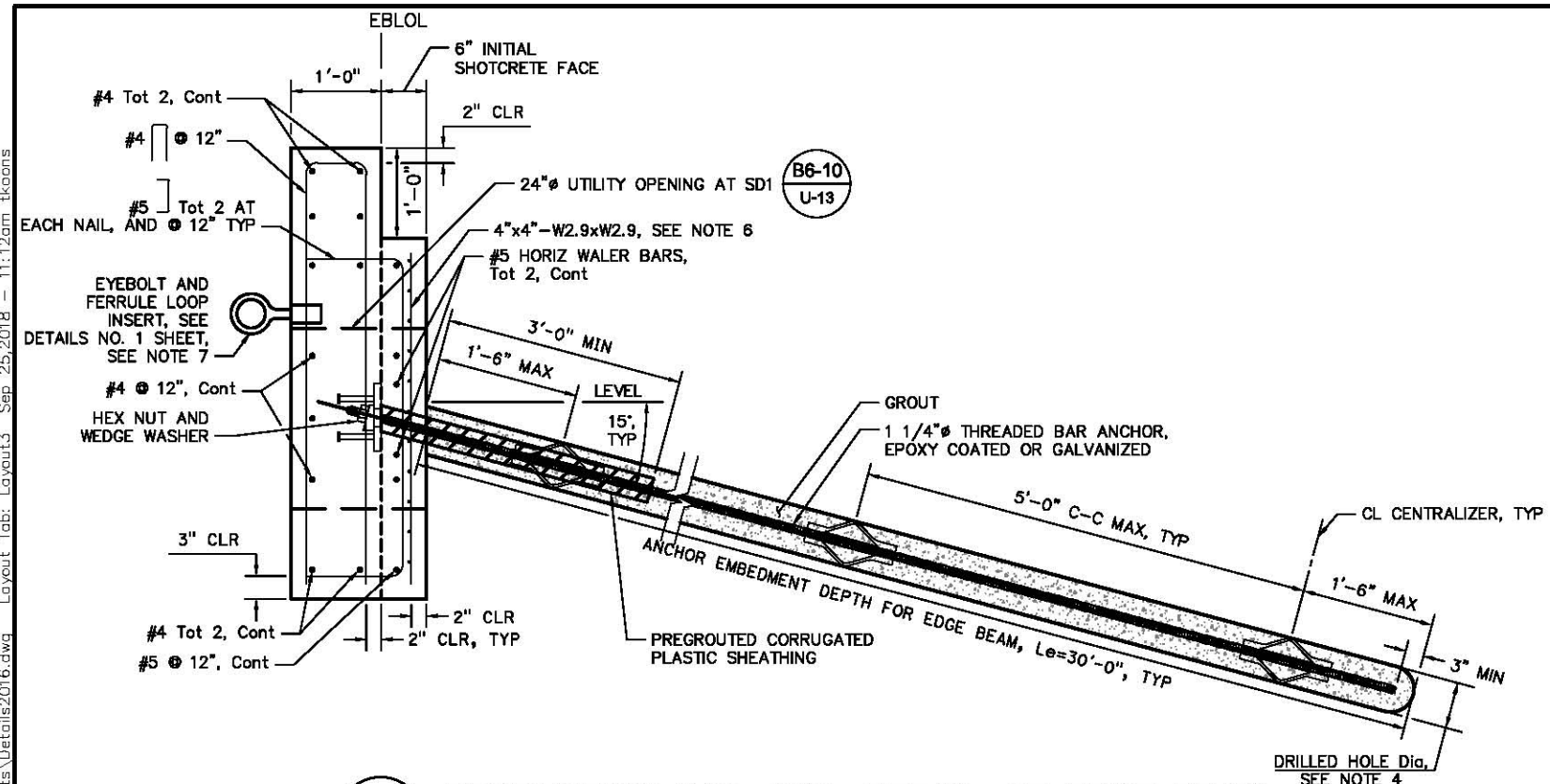
COUNTY OF EL DORADO
 DEPARTMENT OF TRANSPORTATION

SLOPE REINFORCEMENT
 DETAILS NO. 2
 SCALE : NO SCALE

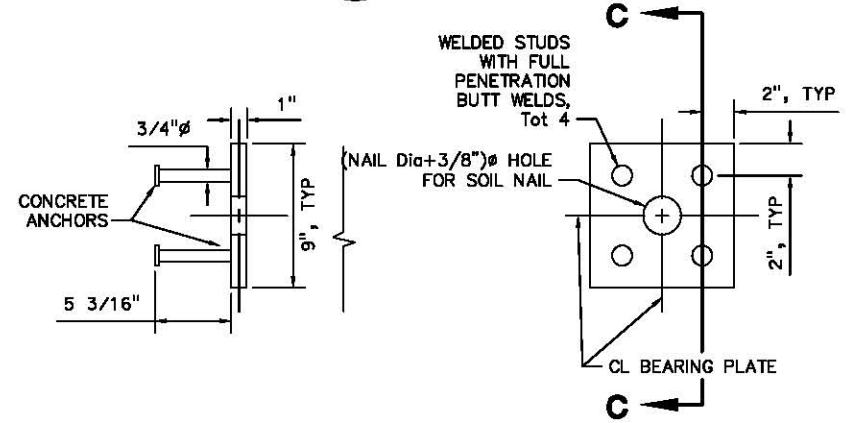
GREEN VALLEY ROAD
 SLIPOUT REPAIR

SHEET
S-3
 7 OF 8
 W.G. No. **78707**

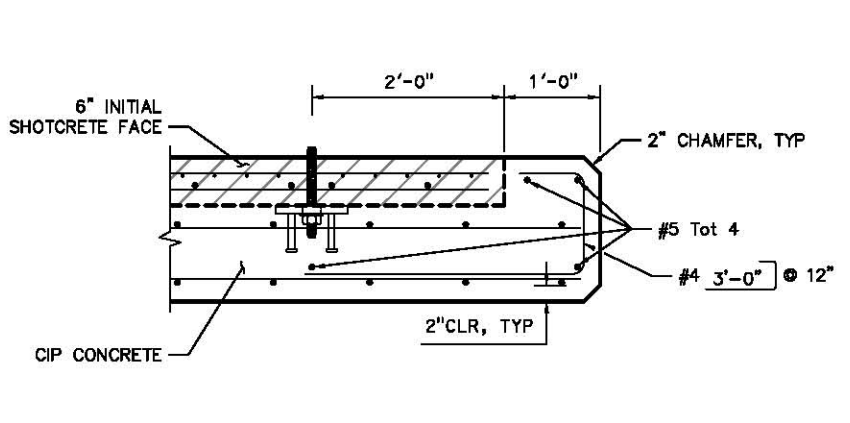
ORIGINAL SCALE IS IN INCHES
 Drawing name: I:\Sacramento\Projects\710102.00\600_CADD\05_Official\01_Sheets\Details2016.dwg
 Layout Tab: Layout3
 Sep. 25, 2018 11:12am ikoons



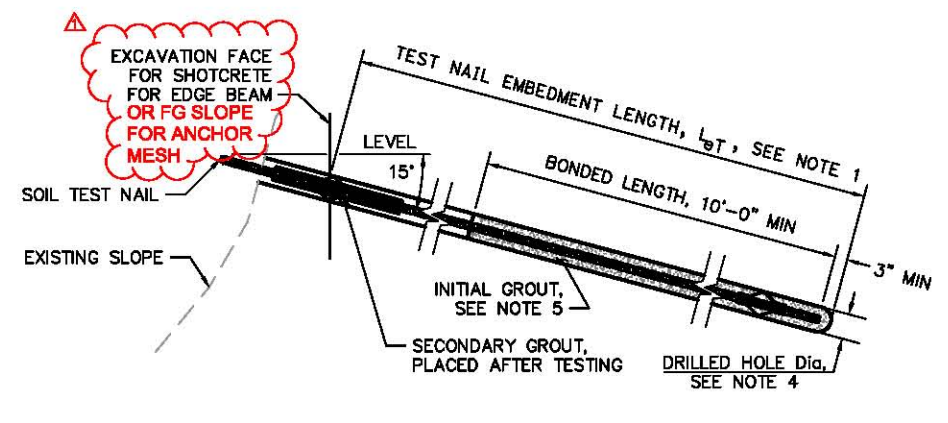
11 PRODUCTION SOIL NAIL DETAIL AT EDGE BEAM
 SCALE: NTS



12 BEARING PLATE DETAIL
 SCALE: NTS



13 TYPICAL END WALL DETAIL
 SCALE: NTS



14 TEST SOIL NAIL DETAIL
 SCALE: NTS

- NOTES:**
1. THE TEST NAIL EMBEDMENT LENGTH, L_{eT} , SHALL BE EQUAL TO $2/3$ OF THE EMBEDMENT LENGTH, L_e , OF ADJACENT PRODUCTION SOIL NAIL ASSEMBLIES, BUT NOT LESS THAN 10'-0".
 2. THE TOTAL LENGTH OF THE PROOF TEST SOIL NAIL ASSEMBLY EQUALS THE EMBEDMENT LENGTH PLUS THE LENGTH REQUIRED FOR JACKING EQUIPMENT.
 3. A MINIMUM OF TEN (10) PROOF TEST NAILS WILL BE INSTALLED AND TESTED PER SPECIAL PROVISIONS AT LOCATIONS TO BE DETERMINED BY ENGINEER..
 4. CONTRACTOR TO DETERMINE DRILLED HOLE DIAMETER, 4" MINIMUM.
 5. FINISHED GROUT SURFACE TO BE NORMAL TO THE BAR.
 6. 8" MINIMUM LAP SPLICE LENGTH FOR WELDED WIRE FABRIC.
 7. OMIT EYBOLTS AT EDGE BEAM FROM 'GV' 10+95.00 TO 'GV' 12+05.00

FOR REDUCED PLANS

**SLOPE REINFORCEMENT
 DETAILS NO. 3
 SCALE : NO SCALE**

REVISION	NUMBER	DATE	DESCRIPTION	BY



PREPARED UNDER THE SUPERVISION OF:
Michael Wilbur
 REGISTERED CIVIL ENGINEER
 DATE: 8/28/2018

DESIGNED: MP
 DRAWN: TAK
 CHECKED: MW
 DATE: 5/8/18
 ROAD NUMBER:



**COUNTY OF EL DORADO
 DEPARTMENT OF TRANSPORTATION**

**GREEN VALLEY ROAD
 SLIPOUT REPAIR**

SHEET
S-4
 8 OF 8
 W.G. No. 78707