

Agriculture/Weights & Measures Department

2/12/2019

2019/2020 Budget

Mission

- To protect, enhance and promote the preservation of agriculture and the environment while sustaining the public health, safety and welfare of all citizens, and to provide consumer and marketplace protections through the fair and equitable enforcement of laws and regulations

Ag Department Programs

Pest Exclusion

Pest Detection

Pest Management

Noxious Weeds

Nursery

Seeds

Phytosanitary Certs

Farmers Markets

Organics

Honey

Fruit, Nut and

Vegetable Quality

Eggs

Pesticide Enforcement

Crop Statistics

Apiary

Ag Department Programs cont.

Device Inspections

Pricing Accuracy

Quantity Control

Weighmaster Audits

Petroleum

Complaint Investigations

HazMat Inspections on Farms

Ag Commission

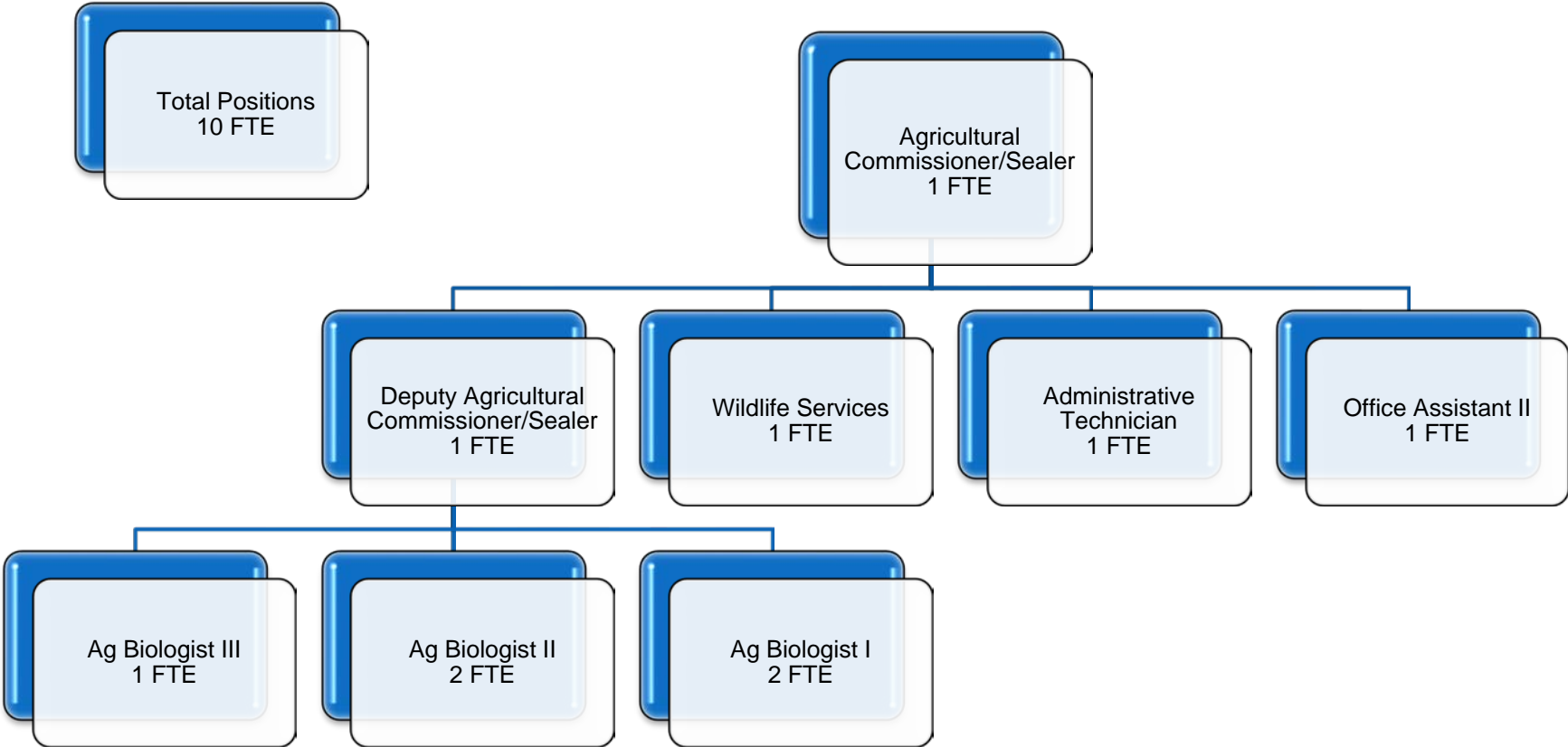
Ag Grading

Wildlife Services

Crop Verification

Outreach

Organizational Chart



Main Sources of Revenue

- State & Federal funds to administer programs
- Funds from licenses/permits
- General Fund
- Pesticide Mill
- Unclaimed Gas Tax

SB 1

- Under SB 1 the Base Gasoline Excise Tax increased 12 cents
- A number of years ago Cal Trans, with the Air Resources Board, developed a formula to estimate the amount of gasoline used by Agriculture and Landscapers.
- Taxes that are not claimed for refunds are distributed to the CA Department of Food and Agriculture to be used by the department and Counties for the administration of Agricultural programs.

The Repeal of SB 1 failed so:

- The Unclaimed Gas Tax disbursement the Ag Department will receive this spring is an increase of 55% over the 2017/2018 amount (A \$173,000 increase for 2018/2019)
- Expecting the same amount for 2019/2020

Maintenance of Effort

- Food and Agricultural Code 224.5
- In order to be eligible for the distribution of the Unclaimed Gas Tax funds the County must maintain county general fund support for agricultural commissioner services at least equal to the average amount expended for the five preceding fiscal years

Upcoming Challenges

- Unknown workloads associated with Commercial Cannabis cultivation
- Unknown workloads associated with Industrial Hemp cultivation