

**Behavioral Health Division Update
Behavioral Health Commission
February 27, 2019 Meeting**

ASSISTANT & DEPUTY DIRECTOR UPDATES

(Katy Eckert & Jamie Samboceti)

- **Homeless Mentally Ill Outreach and Treatment (HMIOT) Program**
Grant: HHSA is taking a multidisciplinary team approach in establishing the program parameters and procedures. Mental Health and Community Services are working closely with Administration and Finance to identify how the funding will be received from the State, utilized within the community to assist residents who have a serious mental illness and who are homeless or at risk of homelessness, with the outcomes reported back to the community and the State. The funding must be spent by June 30, 2020. Once the basic program requirements have been established, HHSA will work closely with County providers to reach eligible residents in need of this assistance.
- **Drug Medi-Cal Organized Delivery System Update:** Please see Attachment A.
- **Psychiatric Health Facility (PHF) Psychiatrist:** Dr. John Motl started with Telecare Corporation as the full-time, in person psychiatrist for the PHF on February 1, 2019. Dr. Motl has been very well received by the clients.

EL DORADO COUNTY BEHAVIORAL HEALTH DIVISION STAFFING

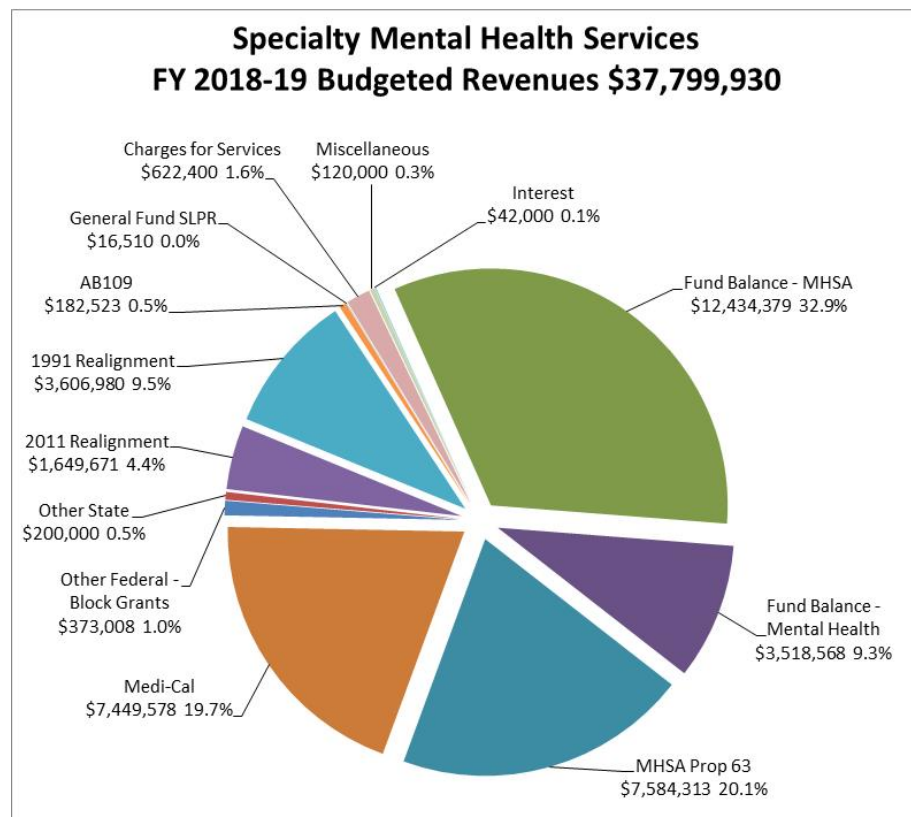
- **New Hires:**
 - James Barnett, MH Worker (WS) - ICM
 - Sascha Bowlin, MH Clinician (WS) - PES
- **Promotions:**
 - None
- **Recruitments:**
 - Ongoing
 - Patients' Rights Advocate (0.4 FTE) (WS)
 - Mental Health Clinicians (WS)
 - New
 - Mental Health Aide (WS)
- **Separations:**
 - Tousley, Alicia, Psychiatric Technician (WS)
 - Micheala Murphy, MH Worker Extra Help (SLT)
- **Position Changes:**
 - None

EL DORADO COUNTY BEHAVIORAL HEALTH FINANCIAL UPDATE

General Information:

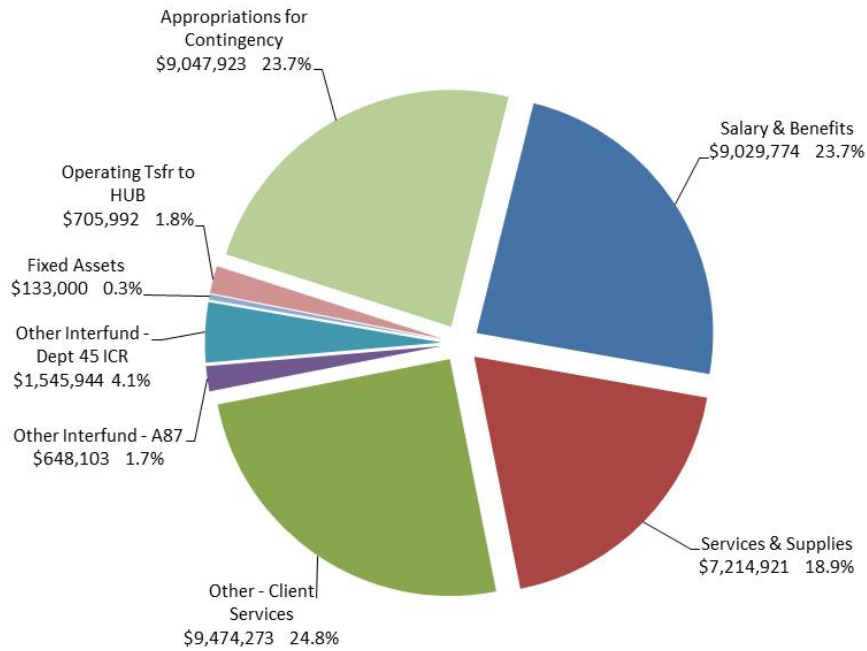
- Most funding coming into Behavioral Health is tied to delivery of services for specified programs.
- Base funding levels for individual counties are now set for 2011 Realignment.
- The County budgets full use of fund balance on the revenue side and an appropriation for contingencies on the expense side to allow flexibility throughout the year.
- When the economy slows down and sales tax receipts drop statewide, we will experience a reduction in 1991 & 2011 Realignment.

Specialty Mental Health Services

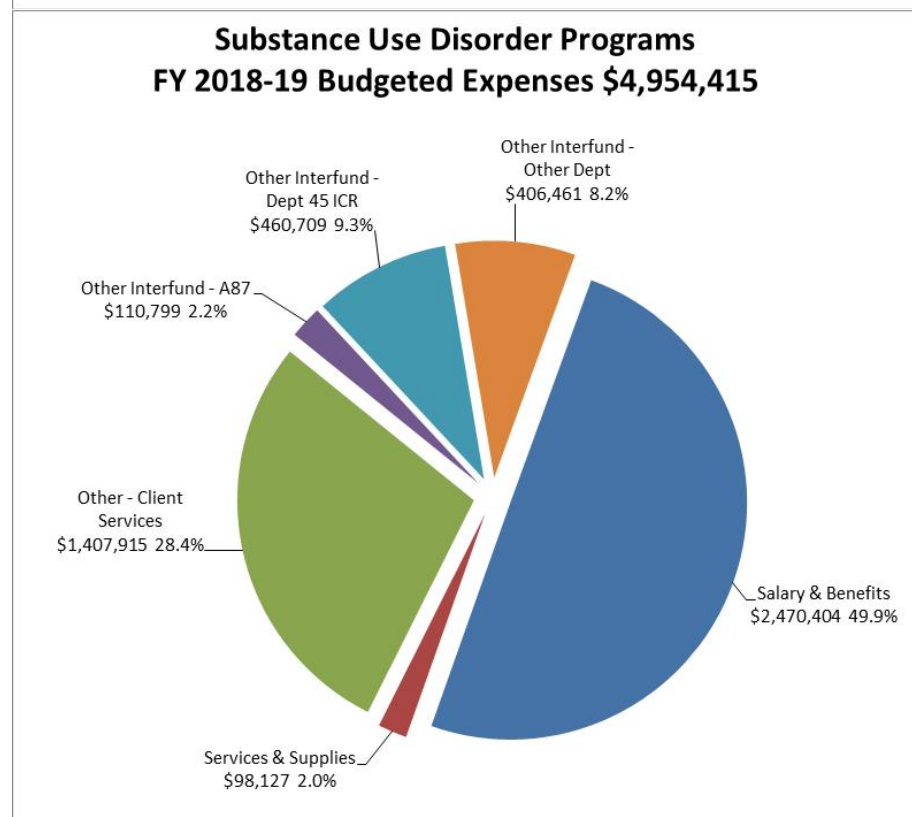
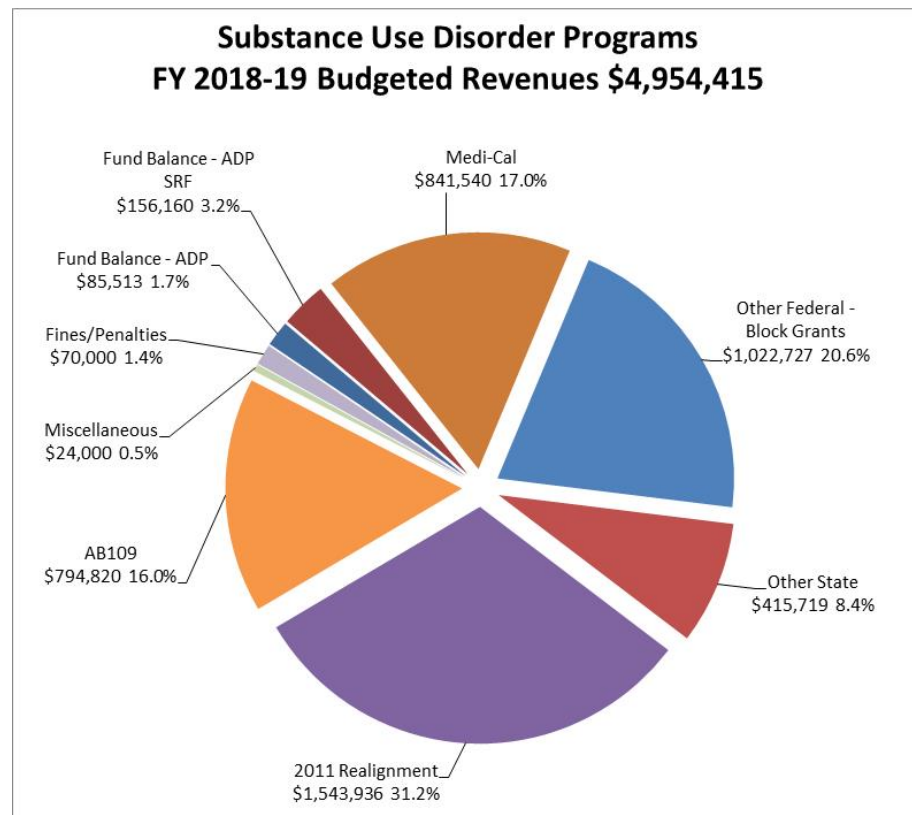


- MHSA Revenues are paid at an estimated rate throughout the year, and a true up occurs in the July/August timeframe. The true up can either greatly increase or decrease revenues received for the year.
- When the economy slows and California millionaires' income levels drop, MHSA revenues will likewise drop.

**Specialty Mental Health Services
FY 2018-19 Budgeted Expenses \$37,799,930**



Substance Use Disorder Programs



CASELOAD AND NEW SERVICE REQUEST DATA

Unduplicated Caseload as of January 2019

Children's Outpatient South Lake Tahoe	Clients	Children's Outpatient West Slope	Clients	Total
TAY	7	TAY	21	28
Clinic*	1	Clinic*	7	8
Contractor: Sierra Child & Family Services (SCF)**	54	Contractor: Sierra Child & Family Services (SCF)**	100	154
Contractor: Tahoe Youth & Family (TY)**	3	n/a		3
		Contractor: Summitview (SV) **	83	83
		Contractor: New Morning (NM)**	35	35
		Contractor: Stanford Youth Solutions (SYS)**	3	3
Subtotal Children's	65	Subtotal Children's	249	314

Adult Outpatient South Lake Tahoe	Clients	Adult Outpatient West Slope	Clients	Total
Clinic	82	Clinic	252	334
ICM/FSP	14	ICM/FSP	54	68
Subtotal Adults	96	Subtotal Adults	306	402

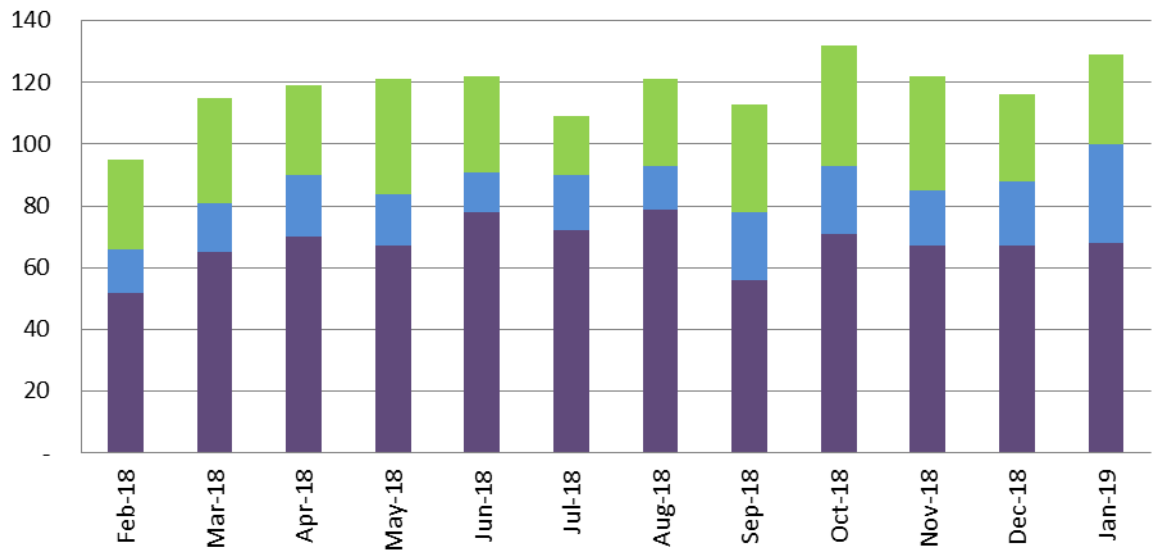
Total South Lake Tahoe	161	Total West Slope	555	716
-------------------------------	------------	-------------------------	------------	------------

* Children who are seen by the Behavioral Health Division only (no Contracted Providers)

** May include children who are seen by the Behavioral Health Division's Psychiatrist

New Service Request Trends

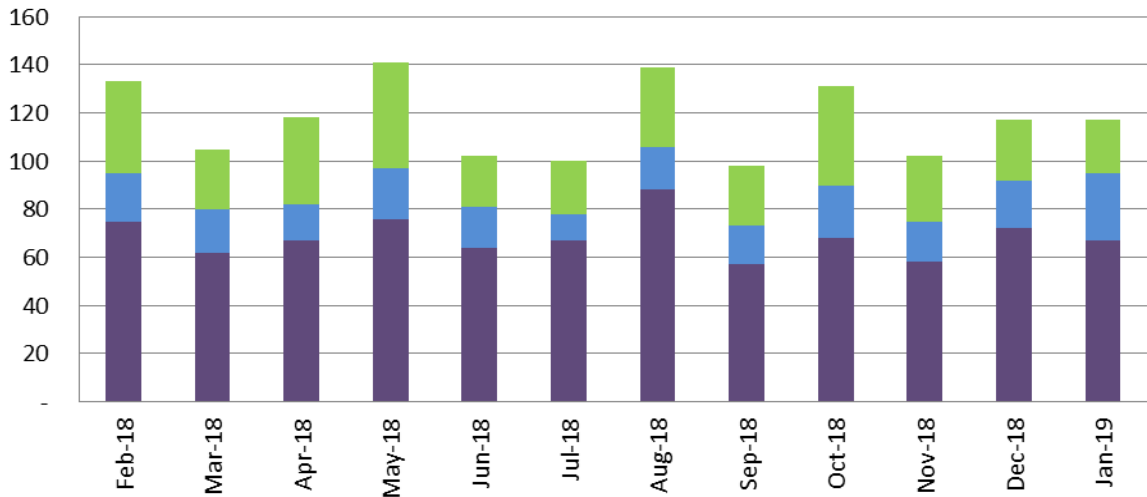
Prior 12 Month Period New Requests for Service



	Feb-18	Mar-18	Apr-18	May-18	Jun-18	Jul-18	Aug-18	Sep-18	Oct-18	Nov-18	Dec-18	Jan-19
Children	29	34	29	37	31	19	28	35	39	37	28	29
TAY	14	16	20	17	13	18	14	22	22	18	21	32
Adult	52	65	70	67	78	72	79	56	71	67	67	68

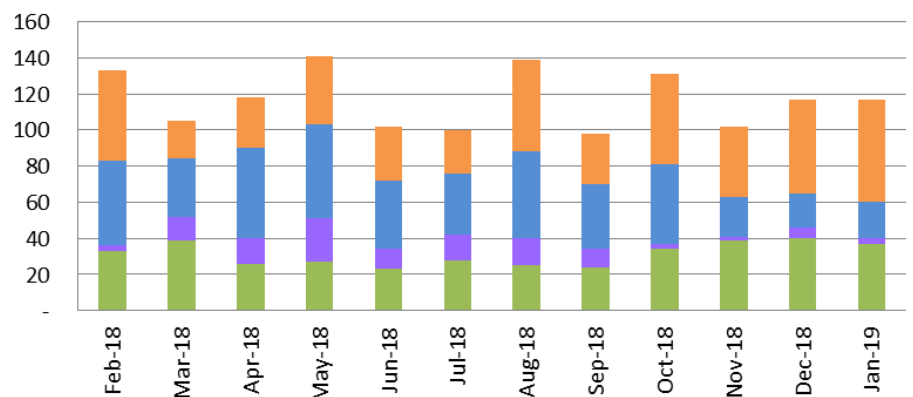
Discharged Service Request Trends

**Prior 12 Month Period Discharged Requests for Service
(by Age)**



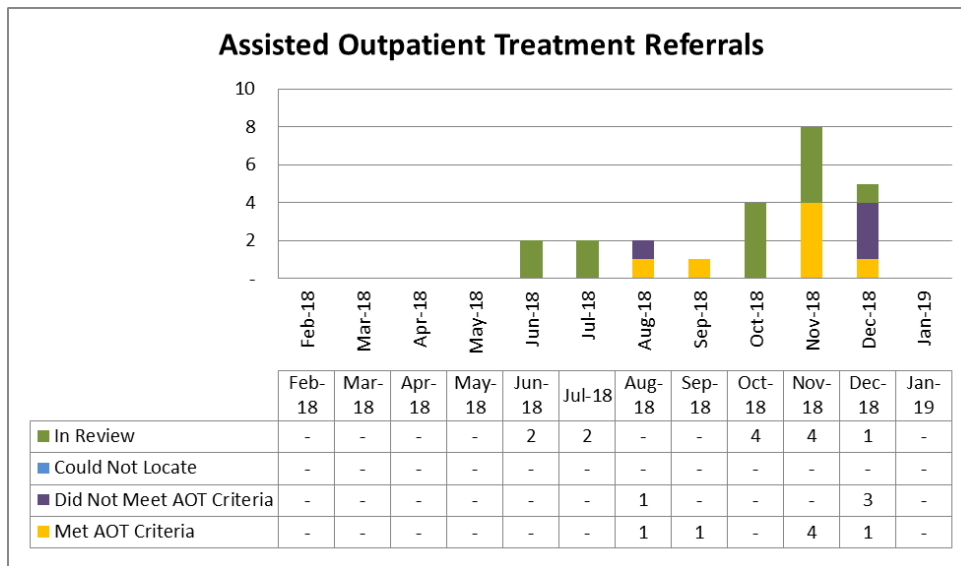
	Feb-18	Mar-18	Apr-18	May-18	Jun-18	Jul-18	Aug-18	Sep-18	Oct-18	Nov-18	Dec-18	Jan-19
Children	38	25	36	44	21	22	33	25	41	27	25	22
TAY	20	18	15	21	17	11	18	16	22	17	20	28
Adult	75	62	67	76	64	67	88	57	68	58	72	67

**Prior 12 Month Period Discharged Requests for Service
(by Disposition)**



	Feb-18	Mar-18	Apr-18	May-18	Jun-18	Jul-18	Aug-18	Sep-18	Oct-18	Nov-18	Dec-18	Jan-19
Other	50	21	28	38	30	24	51	28	50	39	52	57
Does Not Meet Medical Necessity	47	32	50	52	38	34	48	36	44	22	19	20
To Other BH Provider	3	13	14	24	11	14	15	10	3	2	6	3
To BHD OP Services	33	39	26	27	23	28	25	24	34	39	40	37

Assisted Outpatient Treatment: (Nicole Cable)



Disposition of Referrals:

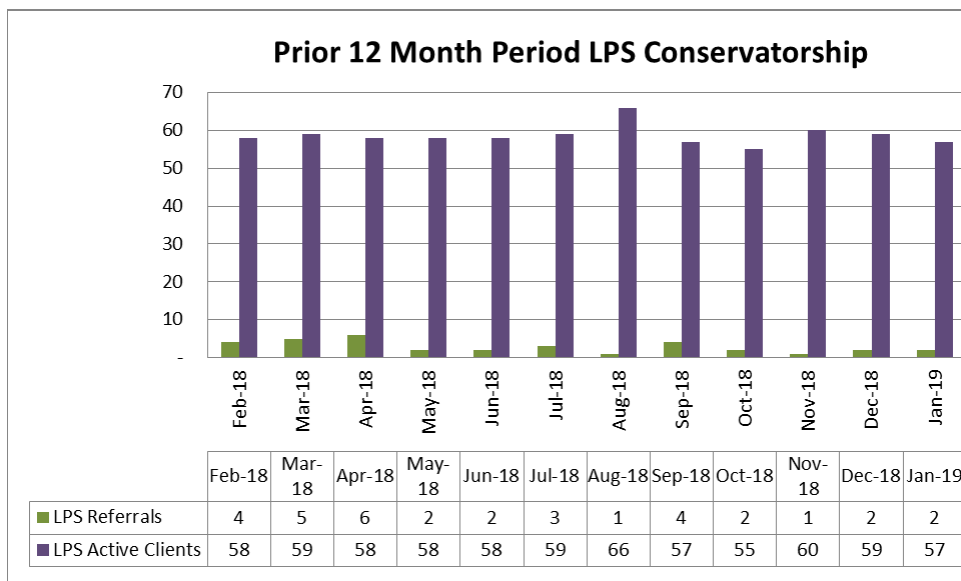
0 did not meet program criteria,
0 met initial program criteria,
0 individuals voluntarily accepted outpatient services,
0 individuals to proceed with the AOT process,
0 applications in review process

Discharged AOT clients:

1 clients discharged:
0 to a lower level of service,
0 out of services

- One AOT Client is in the PHF to determine whether mental illness is SUD issues or SUD issues are due to mental illness.
- One AOT Client was closed due to T-Con/higher level of care.

LPS Conservatorship: (Nicole Cable)



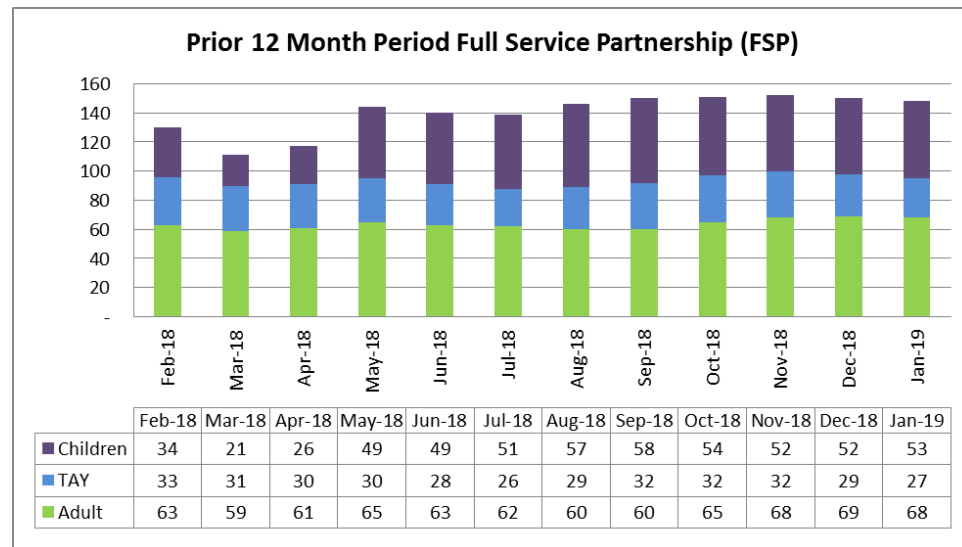
LPS Active Clients:

57 LPS Conservatorships
8 Temporary Conservatorships

LPS Terminations:

4 LPS Terminations
0 Pending LPS Terminations

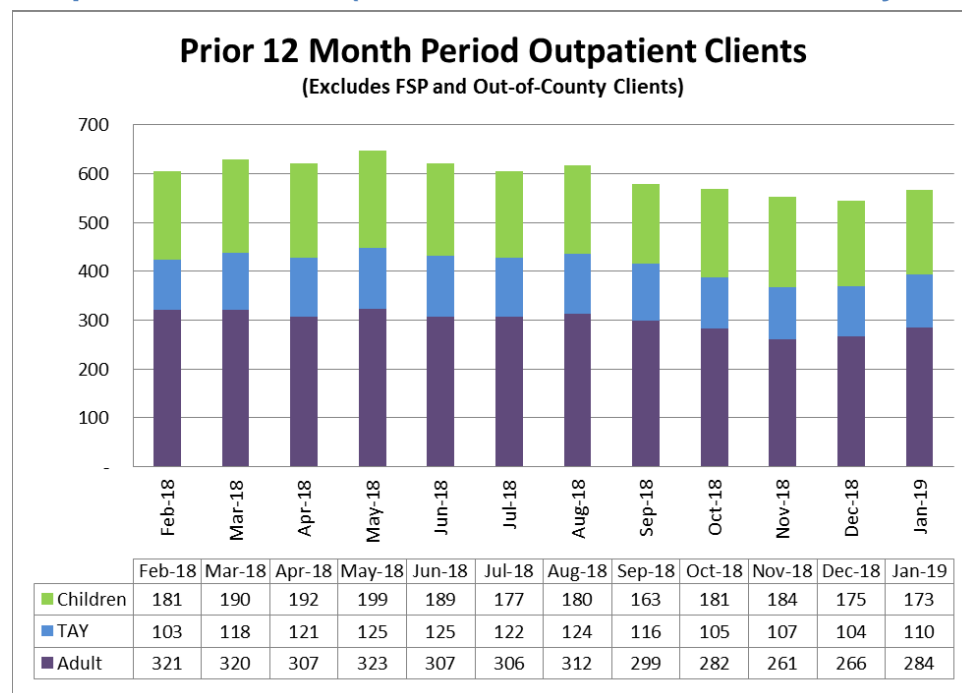
Full Service Partnership (FSP) and Intensive Case Management (ICM) (Nicole Cable and Sabrina Owen)



Intensive Case Management

- West Slope: Serving **47** clients
- SLT: Serving **16** clients

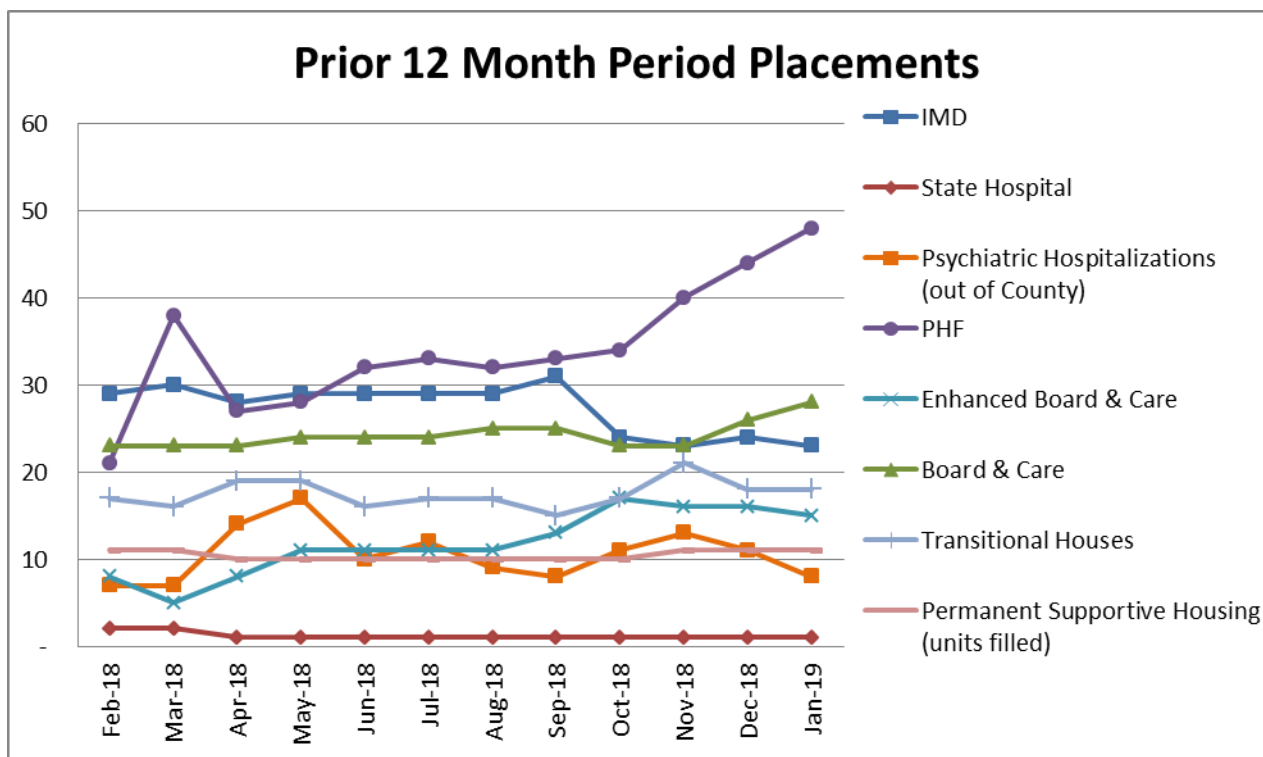
Outpatient Services (excludes FSP and Out-of-County Placements)



Discharges:

- 23 Children discharged from all services**
 - 7 Tahoe
 - 16 West Slope
- 21 TAY discharged from all services**
 - 6 Tahoe
 - 15 West Slope
- 22 Adults discharged from all services**
 - 7 Tahoe
 - 15 West Slope

PLACEMENTS



Board and Care / IMDs / Secure Placements (Nicole Cable)

- **23** IMD beds - Crestwood/Canyon Manor/California Psychiatric Transitions (CPT)
- **1** State Hospital
- **15** Enhanced Board and Care beds including Willow Glen & Silver Ridge
- **28** Board and Care - Sacramento & Galt (including Grace Home)
- **Total:**
 - **61** Out of County Placements
 - **6** In County Placements (Silver Ridge)

Transitions Treatment Program / MIOCR (Nicole Cable / Sabrina Owen)

- **WS: 9** of **15** beds filled:
 - T1 1 Male openings,
 - T2 2 Female openings,
 - T3 2 Male or Female openings,
 - T4 1 Male or Female openings

Plan for Placerville T-houses in February: Move 1 client into bed at T4 2/1, 3 clients to step down to T-houses from Silver Ridge Adult Residential Facility, decreasing overall availability by 4 beds in February.

- **SLT: 8** of **12** beds filled:
 - T1 2 Male or Female openings,
 - T2 (MIOCR) 1 Male and 1 Female openings

Permanent Supportive Housing (Heather Longo / Sabrina Owen)

Trailside Terrace

Clients receive services from the Wellness and Recovery team or from community based supports

- **5 of 5** units occupied
- Wait List:
 - 1 bedroom: 17
 - 2 bedroom: 7
 - 3 bedroom: 0

The Aspens at South Lake

Clients receive ICM team coverage

- **6 of 6** units occupied
- Wait List: unknown #
 - The Aspens is a floating unit configuration based on household size rather than a specific number of apartments for each number of bedrooms

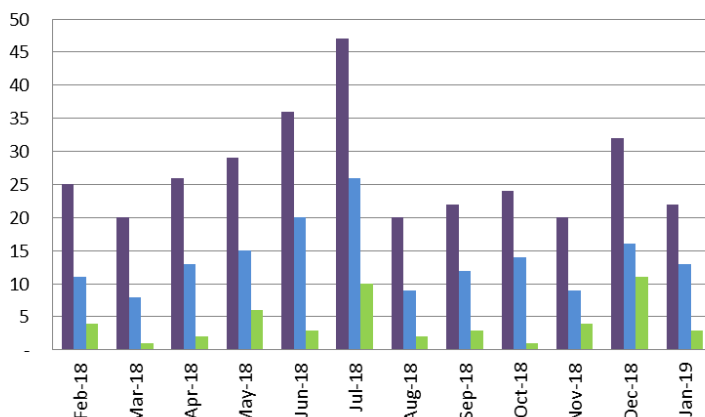
Psychiatric Health Facility (Nicole Cable)

- There were **48** Admissions; **32** Admissions were El Dorado County residents and **16** were Out of County residents.
- There were **34** El Dorado County residents discharged; **21** to Home with Support, **8** to Home without support, **0** MHRC/IMD, **0** Board and Care, **5** to ICM T-House, **0** to Shelter, **0** to Other, and **0** to Emergency Department.
- Upon discharge, **31** El Dorado County residents were insured and 3 El Dorado County residents were pending insurance.
- There were **0** Seclusion Episodes, **0** Physical Restraint Episodes (**0** minutes), **0** Assaults (**0** clients), **0** Elopements, **0** Medication Errors (**0** medication errors with no patient involvement), Client Surveys **48**
- There were **0** denials of El Dorado County referrals:
- Average daily census was **14.2** (range **7-15**), with **8** average length of stay of days.

CRISIS SERVICES

Psychiatric Emergency Services (PES) (Sabrina Owen and Angie Larrigan)

Prior 12 Month Period Psychiatric Emergency Services - SLT



	Feb-18	Mar-18	Apr-18	May-18	Jun-18	Jul-18	Aug-18	Sep-18	Oct-18	Nov-18	Dec-18	Jan-19
■ Crisis Assessments	25	20	26	29	36	47	20	22	24	20	32	22
■ Hospitalizations	11	8	13	15	20	26	9	12	14	9	16	13
■ Referrals to Substance Use Treatment	4	1	2	6	3	10	2	3	1	4	11	3

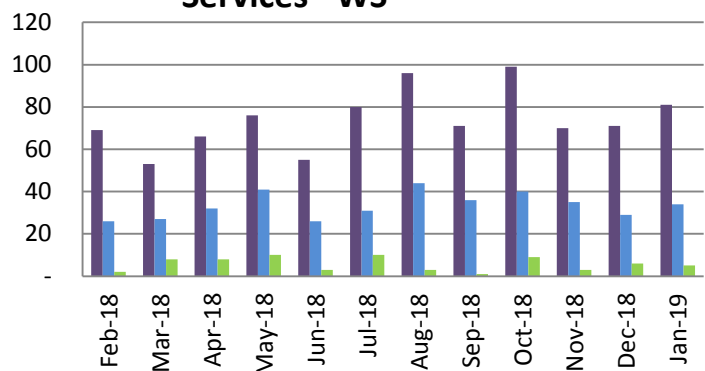
Crisis Assessments for Open Clients:

- SLT: 22
- West Slope: 81

Hospitalizations of Open Clients

- SLT: 13
- West Slope: 34

Prior 12 Month Period Psychiatric Emergency Services - WS



	Feb-18	Mar-18	Apr-18	May-18	Jun-18	Jul-18	Aug-18	Sep-18	Oct-18	Nov-18	Dec-18	Jan-19
■ Crisis Assessments	69	53	66	76	55	80	96	71	99	70	71	81
■ Hospitalizations	26	27	32	41	26	31	44	36	40	35	29	34
■ Referrals to Substance Use Treatment	2	8	8	10	3	10	3	1	9	3	6	5

Crisis Intervention Teams (CIT) (Angie Larrigan and Sabrina Owen)

- **SLT:** MDT met in January and reviewed the Historical Information Form (usually provided by family) and the benefits of using it in the evaluation of a 5150. This form is available on the [EDC Behavioral Health website](#) and the [Sheriff's department website](#). SLTPD responded that they would enquire about making it available on their website as well. All were in agreement that further education on the form and its availability and use would be beneficial to all law enforcement as knowledge and use of the form varied.
- **WS:** There have been significant changes in PERT / CIT management and supervision. Per EDSO, effective immediately, the PERT and CIT will be moved to the EDSO Operations Division from the Custody Division, which changes the Captain and Lieutenant. The new Captain is Ed Falkenstein, and Troy Morton is the Lieutenant. Sergeant Steve Schofield has been selected as the new PERT and CIT sergeant, for both SLT and West Slope. Per EDSO, Sgt. Schofield was a part of CIT when it began and has the experience needed for the CIT team.

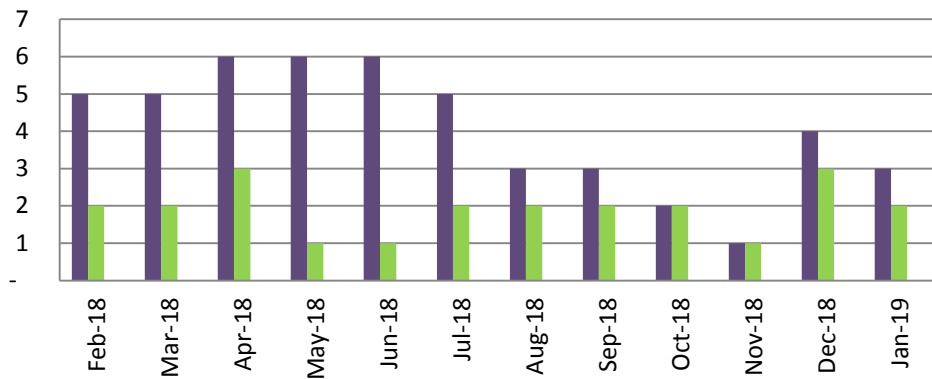
- **PERT:**

Contacts for Month	73
Safety Plans	41
PERT Holds Written	3
Law Enforcement Would Have Held	17
Voluntary Transports to Emergency Department	6
Law Enforcement Holds Written	42
Behavioral Health Outpatient Holds Written	1
Other/Unable to Locate/Inaccurate Report for Service	4
Substance Use Admitted/Confirmed	44
Adult Protective Services (APS) Referrals	6
"Fit For" Jail Crisis Risk Assessments Conducted by PERT	1

JUSTICE SERVICES

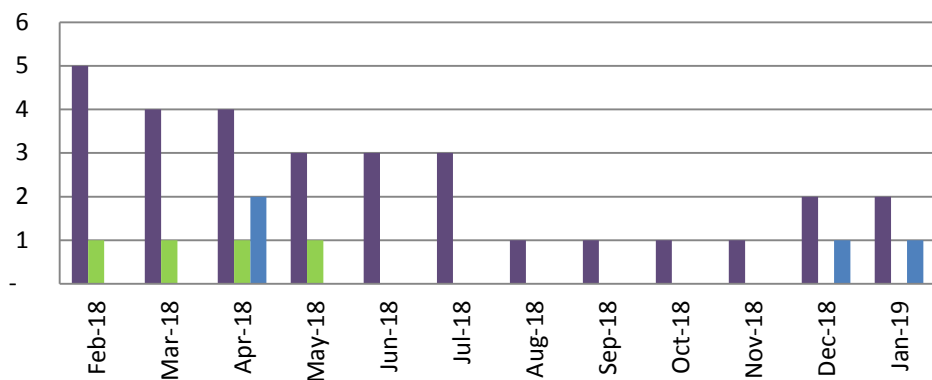
Behavioral Health Court (John Schumacher)

Prior 12 Month Period Behavioral Health Court - SLT



	Feb-18	Mar-18	Apr-18	May-18	Jun-18	Jul-18	Aug-18	Sep-18	Oct-18	Nov-18	Dec-18	Jan-19
Active Participants	5	5	6	6	6	5	3	3	2	1	4	3
Sober Living	2	2	3	1	1	2	2	2	2	1	3	2
Residential Substance Use	-	-	-	-	-	-	-	-	-	-	-	-

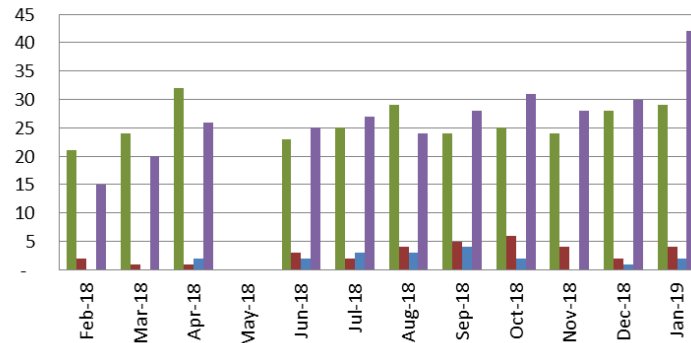
Prior 12 Month Period Behavioral Health Court - WS



	Feb-18	Mar-18	Apr-18	May-18	Jun-18	Jul-18	Aug-18	Sep-18	Oct-18	Nov-18	Dec-18	Jan-19
Active Participants	5	4	4	3	3	3	1	1	1	1	2	2
Sober Living	1	1	1	1	-	-	-	-	-	-	-	-
Residential Substance Use	-	-	2	-	-	-	-	-	-	-	1	1

AB 109 (John Schumacher)

**Prior 12 Month Period AB 109 Client Services
at the Community Corrections Center**

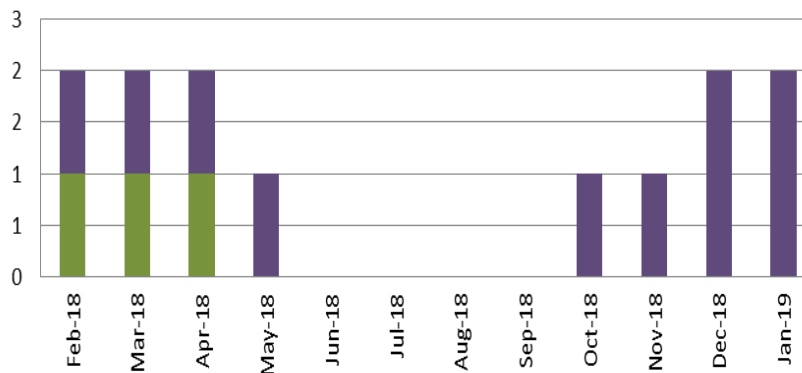


Substance Use Treatment @ CCC	21	24	32	-	23	25	29	24	25	24	28	29
Sober Living	2	1	1	-	3	2	4	5	6	4	2	4
Residential Substance Use	-	-	2	-	2	3	3	4	2	-	1	2
Mental Health Services	15	20	26	-	25	27	24	28	31	28	30	42

- **9** clients are receiving Substance Use Education services in the South Lake Tahoe jail.
- **24** clients are receiving Substance Use Disorder treatment in Placerville Jail.
- **3** client is receiving treatment from a contracted community provider in SLT.
- **2** clients are receiving treatment from a contracted community provider in Placerville.

Mental Health Clients in Jail (Jamie Samboceti)

Prior 12 Month Period Mental Health Clients in Jail



	Feb-18	Mar-18	Apr-18	May-18	Jun-18	Jul-18	Aug-18	Sep-18	Oct-18	Nov-18	Dec-18	Jan-19
Placerville Jail	1	1	1	1	0	0	0	0	1	1	2	2
SLT Jail	1	1	1	0	0	0	0	0	0	0	0	0

Count of Behavioral Health's existing clients that were receiving Specialty Mental Health Services at the time of their incarceration in the Placerville or SLT Jails only.

Restoration of Competency (Nicole Cable)

- **0** Outpatient ROC referrals
- **0** Jail ROC referral
- **1** client receiving ROC Outpatient services
- **0** client receiving ROC Inpatient services (CPT)

QUALITY ASSURANCE & PATIENT RIGHTS

Patients' Rights Advocate (Ren Strong)

To be reported next month.

Certification hearings are held at the PHF on Mondays and Thursdays (except holidays).
--

Quality Improvement/Utilization Review (Angelina Larrigan / Ren Strong)

- The County is awaiting the report from the State with the results of the System and Chart Review.
- The County is awaiting the report from the State with the results of the January 2, 2019 Network Adequacy Certification Tool (NACT) submittal.
- The County is preparing for the annual External Quality Review Organization (EQRO) visit in March. The QI/UR team is preparing the pre-EQRO documentation. EQRO focuses on the County's Specialty Mental Health Services systems, procedures, activities, and data that are designed to improve access, timeliness, quality, and outcomes of services. Final reports from each annual EQRO visit can be found at https://www.calegro.com/mh-egro#!mh-reports_and_summaries.

Grievances/Appeals/Hearings (Ren Strong)

To be reported next month.

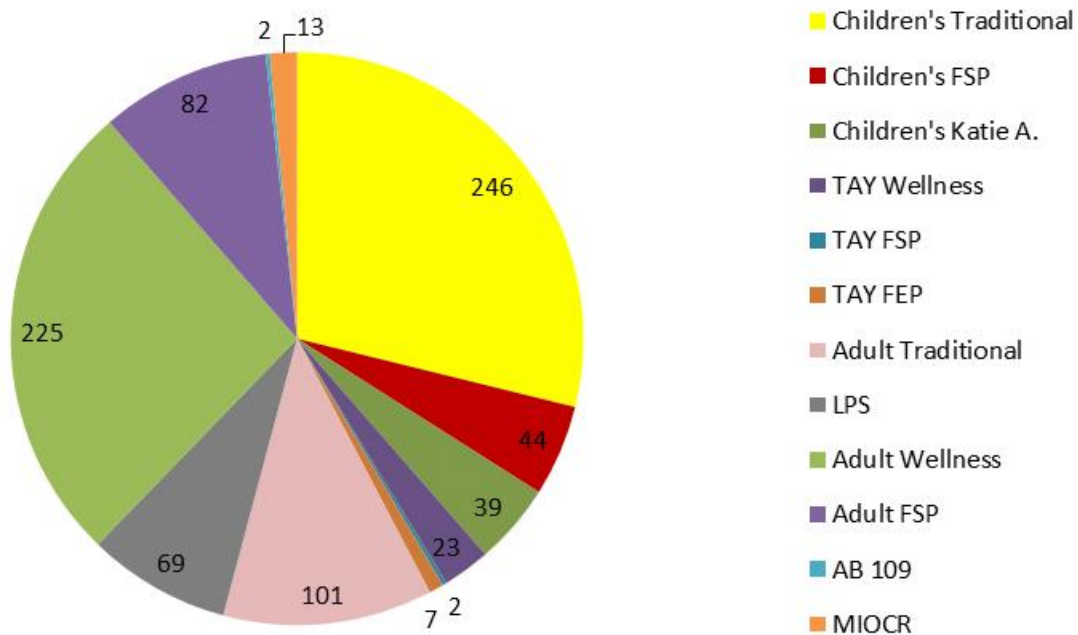
PERFORMANCE IMPROVEMENT METRICS (reported quarterly)

Report Period: Quarter 2 (October through December, 2018)

Performance Improvement Measures U1 Number Served by Outpatient MH Programs

El Dorado County HHSA
Behavioral Health Division

2nd Quarter FY 18/19
Total Unduplicated Clients = 818
Total Episodes Open = 906*

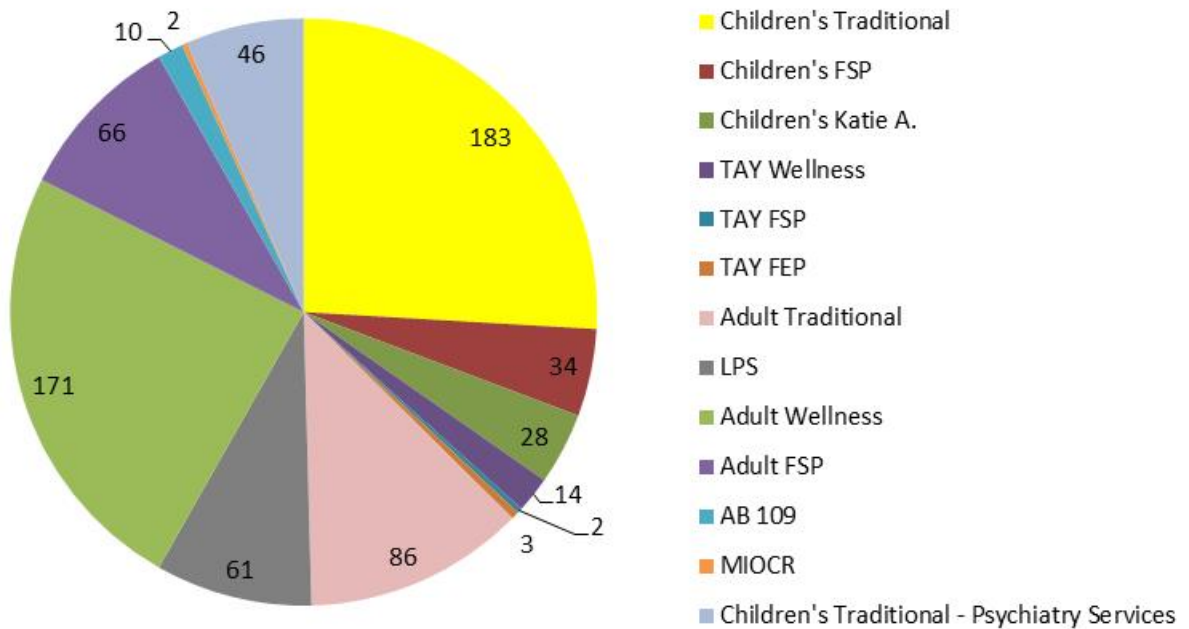


* Clients may be enrolled in two programs simultaneously (e.g., Children's Traditional and Children's Traditional - Psychiatry Services) or switched programs during the month.

Performance Improvement Measures
U1 Number of Open Episodes at End of Quarter

El Dorado County HHSA
Behavioral Health Division

2nd Quarter FY 18/19
Total Unduplicated Clients = 673
Total Episodes Open = 706*



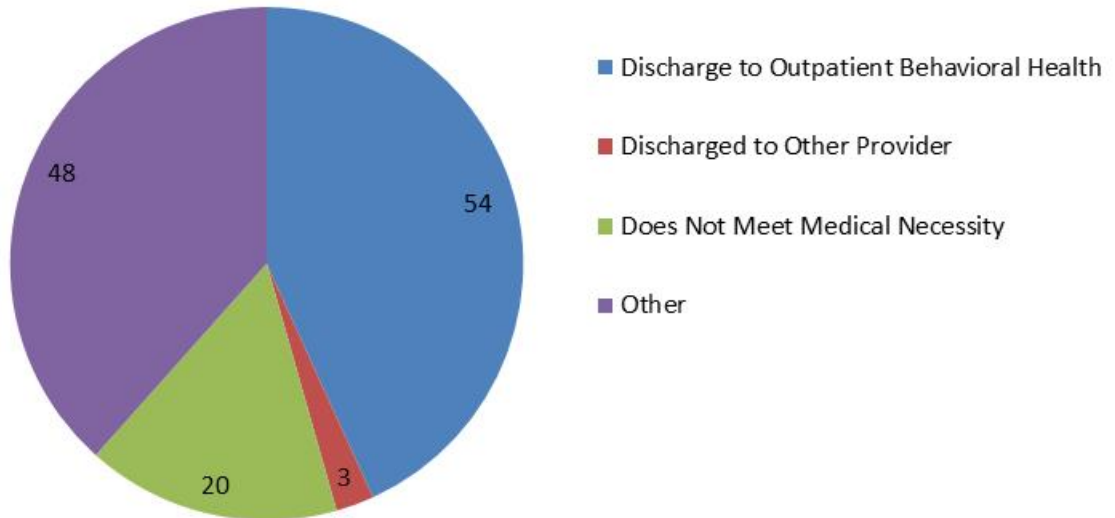
* Clients may be enrolled in two programs simultaneously (e.g., Children's Traditional and Children's Traditional - Psychiatry Services).

**Performance Improvement Measure
U1 Number of Request For Service Discharges**

**El Dorado County HHSA
Behavioral Health Division**

Children - 2nd Quarter FY 18/19

Total = 125

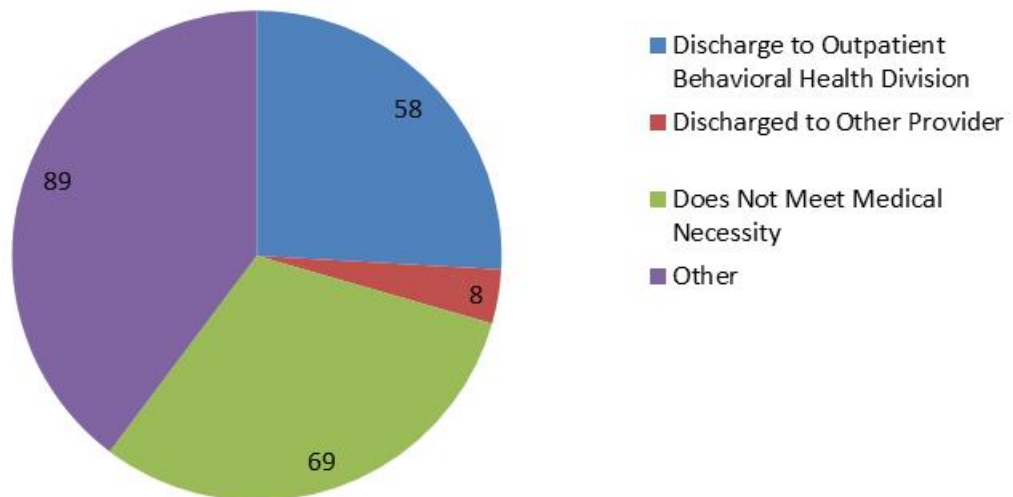


**Performance Improvement Measure
U1 Number of Request For Service Discharges**

**El Dorado County HHSA
Behavioral Health Division**

Adult - 2nd Quarter FY 18/19

Total = 224

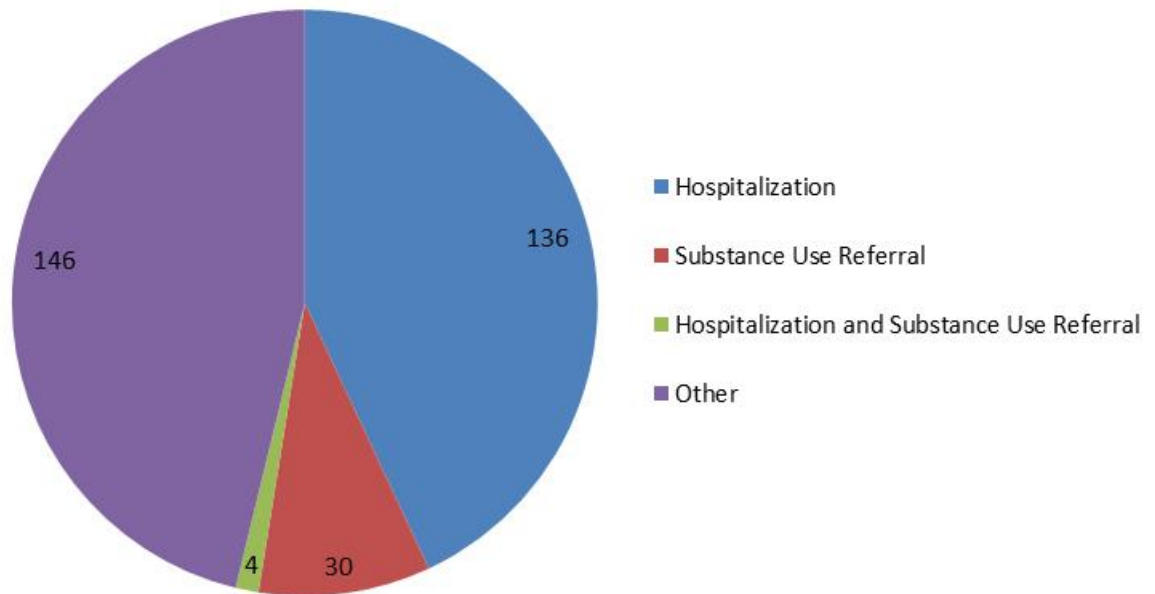


Other = Incarcerated, moved out of county, canceled, client could not be contacted, discharged to crisis, discharged to PHF, no show.

**Performance Improvement Measure
Disposition of Crisis Assessments**

**El Dorado County HHSA
Behavioral Health Division**

**2nd Quarter FY 18/19
Total Crisis Assessments = 316
Total Unduplicated Individuals = 270**



PROGRAM ACTIVITY UPDATES

ALCOHOL AND DRUG SERVICES / SUBSTANCE USE DISORDERS (Salina Drennan)

Tahoe:

- Parent Group Texting Network: Currently broadcasting SUDS prevention information to over 400 parents in the SLT area.
- Botvin Life Skills: SUD Prevention Curriculum presented at the South Tahoe Middle School once per week, currently serving one class with 15 students.
- Behavioral Health Court: South Lake Tahoe Behavioral Health Court graduated four clients in 2018.

West Slope:

- MH/SUDS Collaboration: Substance Use Disorder Services Mental Health Clinician Mary Gough started new men's and women's co-occurring groups this week focused on clients who are open to Mental Health services. We have improved collaboration with Mental Health to better serve our shared clients.
- Behavioral Health Court: After graduating four clients from the West Slope Behavioral Health Court in 2018, we anticipate another graduate within the next two months.

MENTAL HEALTH SERVICES ACT (MHSA) (Heather Longo/Tami Smith)

- Attended various MHSA-related webinars and conference calls.
- As part of the MHSA Community Program Planning Process, the MHSA team provided an overview of MHSA and gathered community and stakeholder input regarding the Fiscal Year 2019/20 Annual Update and the Innovation proposals. MHSA held or attended 11 meetings on both Slopes with a total of 121 attendees.
- The MHSA team is awaiting the report from the State with the results of the MHSA Review.

OUTPATIENT SERVICES

(Sabrina Owen (SLT); Lesly Van Sloten and Nicole Cable (WS))

Wellness Center Activities:

Tahoe:

- Kim Jones, MH Worker, has been sharing her nutritional knowledge and cooking skills to assist wellness participants in making healthier food choices and expanding their repertoire of recipes that are budget friendly and support wellness.

West Slope:

- A Peer Appreciation Brunch was held on January 25th for all peer leaders who have graduated peer academy since it started. Staff prepared and served a meal of appetizers, salad, lasagna and dessert. They were presented with a certificate showing their total number of volunteer hours.

ICM Activities:

Tahoe:

- ICM clients continue to work on applying skills learned in the treatment setting to real life situations that test their cognitive regulation skills, distress tolerance, emotional regulation and interpersonal effectiveness. Staff provide positive reinforcement for skillful behaviors and problem solving and coaching for areas of difficulties.

West Slope:

- Weekend outings included a trip to the Folsom College Observatory, ice skating, art museum, 1st Saturday at Snowline, trip to Lotus Park and snow trip to Tahoe. As identified under the Tahoe activities, these trips help clients apply their learned skills to every day, real life situations while receiving positive reinforcement, problem solving, and coaching from staff.

Children's Services (Angie Larrigan)

- Behavioral Health and Child Welfare Services continue to work together to develop the Children's System of Care. The Children's System of Care embraces the "no wrong door" approach to serve Children and Youth experiencing complex and interrelated needs that require services spanning multiple disciplines and agencies. We are currently working with a consultant to help effectively bridge El Dorado County Child Welfare Services and Behavioral Health Services.
- Monthly meetings have been taking place between the Central Region Children's System of Care coordinators to discuss strengths and barriers identified with the implementation of the various CCR expectations.
- DHCS has issued guidance on Children's Crisis Residential Programs for children and youth. Summitview Child and Family Services is planning to open a Crisis Residential Program in the near future.

TAY DBT/FEP Program (Sabrina Owen and Lesly Van Sloten)

Tahoe

- The DBT groups at both schools are going well. One FEP participant is scheduled to transition from the T-house and into a supported training/employment program in early February in Placerville.

West Slope

- The DBT groups at Independence and at Charter Community are going very well.
- Currently we have we have 3 FEP clients. One has met goals and is in the process of transitioning to a community provider.

ADULT OUTPATIENT GROUP SCHEDULES

WS Adult Outpatient Services

Monday	
BHC/Wellness - Check In Group	10:30 am - 11:30 am
Anger Management	1:15 pm - 2:00 pm (Open to clients)
Ted Talks	1:15 pm - 2:00 pm (Wellness/Peer Led)
Exercise Group	2:00 pm - 3:00 pm (Wellness/Peer Led)
Basic Conversation Skills	2:00 pm - 3:00 pm (Wellness)
Stress Reduction	3:00 pm - 4:00 pm (Open to clients)
Play a Game Group	3:00 pm - 4:00 pm (Wellness)
Life Skills	3:00 pm - 4:00 pm
Tuesday	
Dried Mangoes Rehearsal Music Group	10:00 am - 11:00 am (Wellness)
Ted Talks	1:15 pm - 2:00 pm (Wellness/Peer Led)
Women's Co-Occurring Recovery Group	1:15 pm - 2:45 pm (ADP)
Art Group with Jan from NAMI	1:30 pm - 3:00 pm (Wellness/Peer Led)
Healthy Pleasures	1:30 pm - 2:30 pm (Staff and Peer Led)
Job Connections Group	1:30 pm - 3:30 pm (Wellness)
Smoking Cessation	3:00 pm - 4:00 pm (Wellness)
Wednesday	
DBT Skills Group - Skills Training	10:00 am - 12:00 pm
Transitional Housing Independent Living Skills	12:00 pm - 1:00 pm
Dual Recovery Anonymous - Peer Support Group	1:00 pm - 2:00 pm (Wellness/Peer Led)
Ted Talks	1:15 pm - 2:00 pm (Wellness/Peer Led)
Self-Care/ADLS Group	1:30 pm - 3:30 pm (Wellness)
Soothing Techniques	2:00 pm - 3:00 pm (Wellness)
Anger Management Group	2:00 pm - 3:00 pm
MH Peer Leadership Academy	2:00 pm - 4:00 pm
Thursday	
Seeking Safety Group	10:30 am-12:00 pm
Improv Music Group	10:00 am - 11:00 am (Wellness/Peer Led)
Women's Co-Occurring Recovery Group	1:15 pm - 2:45 pm (Seeking Safety, ADP)
Healthy Pleasures	1:30 pm - 2:30 pm (Wellness)
TAY DAY	2:00 pm - 4:00 pm (Wellness)
Anxiety and Depression Group	2:30 pm - 3:30 pm (Wellness/Peer Led)
Friday	
DBT Group - Skills Training	10:00 am - 12:00 pm (Closed)
Men's Co-Occurring Recovery Group	10:15 am - 11:45 am (ADP)
Ted Talks	1:30 pm - 2:00 pm (Wellness/Peer Led)
DBT Group - Skills Training	1:30 pm - 2:30 pm
Cinema Club	2:00 pm - 4:00 pm (Wellness)
Mindfulness Group (On hold)	2:45 pm - 3:30 pm (Wellness)

SLT Adult Outpatient Services

Monday	
Co-Occurring DBT	11:00 am - 12:00 pm
DBT - Mindfulness (modified)	1:00 pm - 2:30 pm
Women's Group	1:00 pm - 2:30 pm
DBT - Skill Building	1:30 pm - 2:30 pm (Wellness)
TED Talks - Information & Conversation	3:00 pm – 3:30 pm (Wellness)
Current Events Discussion	3:35 pm – 4:00 pm (Wellness)
Tuesday	
DBT - Mindfulness	1:00 pm - 2:30 pm
Health Awareness/Cooking	1:30 pm - 2:30 pm (Wellness)
Peer Leadership	3:00 pm - 3:30 pm (Wellness)
Just One Thing (Mindfulness)	3:35 pm - 4:00 pm (Wellness)
Wednesday	
DBT – Emotional Regulation	10:30 pm - 12:00 pm
DBT – Interpersonal Effectiveness	1:00 pm - 2:30 pm
Recovery Through Art	1:30 pm - 2:30 pm (Wellness)
Refuge Recovery	3:00 pm - 3:30 pm (Wellness)
Healthy Relationship Skills	3:35 pm - 4:00 pm (Wellness)
Thursday	
Co-occurring Women's Group	10:30 am - 12:00 pm (ADP)
DBT - Distress Tolerance	1:00 pm - 2:30 pm
Community Excursions	1:00 pm – 4:00 pm (Wellness)
Movement Mindfulness	1:30 pm - 2:30 pm (Wellness)
Stress Management/Coping Skills	3:00 pm - 3:30 pm (Wellness)
Social Awareness	3:35 pm - 4:00 pm (Wellness)
Friday	
BHC Group	12:30 pm - 1:00 pm
Volunteering	1:00 pm - 4:00pm (Wellness)
Anger Management	1:30 pm - 2:30 pm (Wellness)
Leisure Skills	3:00 pm – 3:30 pm (Wellness)
Paths to Recovery (Book Study)	3:35 pm - 4:00 pm (Wellness)
Men's Wellness	2:30 pm - 4:00 pm
Saturday	
Friends 'n Fitness	11:00 am - 12:30 pm

INITIALS & DEFINITIONS

Initials	Definition
AB	Assembly Bill
ACEs	Adverse Childhood Experiences
ADL	Activities of Daily Living
ADP	Alcohol and Drug Programs
AMFT	Associate Marriage and Family Therapist
AOT	Assisted Outpatient Treatment
APCC	Associate Professional Clinical Counselor
APS	Adult Protective Services
ARF	Adult Residential Facility
B&C	Board and Care
BHC	Behavioral Health Court
BHD	Behavioral Health Division (formerly the Mental Health Division)
BOMUSD	Black Oak Mine Unified School District
BSCC	Board of State and Community Corrections
CalMHSA	California Mental Health Services Authority
CalQIC	California Quality Improvement Coordinators
CANS	Child and Adolescent Needs and Strengths
CBHDA	California Behavioral Health Directors Association
CBO	Community Based Organization
CBT	Cognitive Behavior Therapy
CCC	Community Corrections Center or California Conservation Corps
CCP	Community Corrections Partnership
CCR	Continuum of Care Reform
CDCR	California Department of Corrections and Rehabilitation
CDSS	California Department of Social Services
CFMG	California Forensic Medical Group
CFR	Code of Federal Regulations
CFT	Children and Family Teams
CFTN	Capital Facilities and Technology Needs
CHP	California Highway Patrol
CIT	Crisis Intervention Team
CMS	Centers for Medicare & Medicaid Services
CPP	Community Planning Process
CPS	Child Protection Services
CPT	California Psychiatric Transitions
CSS	Community Services and Supports
DBT	Dialectical Behavior Therapy
DHCS	Department of Health Care Services (California)
DMC-ODS	Drug Medi-Cal Organized Delivery System
Dx	Diagnosis
ED	Emergency Department
EDC	El Dorado County
EDCMH	El Dorado County Mental Health
EDCOE	El Dorado County Office of Education
EDCSO	El Dorado County Sheriff's Office
EDSO	El Dorado Sheriff's Office
EDCVC	El Dorado Community Vision Coalition

EH	Extra Help
EPSDT	Early and Periodic Screening, Diagnosis and Treatment
EQRO	External Quality Review Organization
ER	Emergency Room
FEP	First Episode Psychosis
FSP	Full Service Partnership
FTE	Full-Time Equivalent
FY	Fiscal Year
HHSA	Health and Human Services Agency
HOT	Homeless Outreach Team
IA	Intergovernmental Agreement
ICC	Intensive Care Coordination
ICM	Intensive Case Management
IHBS	Intensive Home-Based Services
IMD	Institution for Mental Disease (facility)
ITWS	Information Technology Web Services
Katie A.	<i>Katie A. vs. Bonta</i> Lawsuit and/or resulting programs/services
LCSW	Licensed Clinical Social Worker
LL	Laura's Law
LOCUS	Level of Care Utilization System
LPCC	Licensed Professional Clinical Counselor
LPS	Lanterman Petris Short
LT	Limited Term
LTCC	Lake Tahoe Community College
MAR	Medication Administration Record
MDT	Multi-Disciplinary Team
M-F	Monday through Friday
MH	Mental Health
MHD	Mental Health Division
MHOAC	Mental Health Oversight and Accountability Commission
MHRC	Mental Health Rehabilitation Center (facility)
MHSA	Mental Health Services Act
MHSUDS	Mental Health and Substance Use Disorder Services, a division of the State's Department of Health Care Services (DHCS)
MHW	Mental Health Worker
MIOCR	Mentally Ill Offender Crime Reduction
MOA	Medical Office Assistant
MOU	Memorandum of Understanding
MRT	Moral Reconciliation Therapy
NACT	Network Adequacy Certification Tool
NM	New Morning Youth & Family
NOABD	Notice of Adverse Benefit Determination
OP	Outpatient
PA	Physician Assistant
PATH	Projects for Assistance in Transition from Homelessness
PCP	Primary Care Physician
PD	Police Department
PEI	Prevention and Early Intervention
PERT	Psychiatric Emergency Response Team
PES	Psychiatric Emergency Services
PG	Public Guardian
PHF	Psychiatric Health Facility
PIP	Primary Intervention Program or Program Improvement Plan

POC	Plan of Correction
PPD	Placerville Police Department
PSC-35	Pediatric Symptom Checklist
QA/UR	Quality Assurance/Utilization Review
QI	Quality Improvement
QI/UR	Quality Improvement/Utilization Review
QIC	Quality Improvement Committee
RIF	Reduction in Force
RFI	Request for Information
RFP	Request for Proposal
RFQ	Request for Qualifications
ROI	Authorization for Release of Information
ROC	Restoration of Competence
RV	Remi Vista
SAMHSA	Substance Abuse and Mental Health Services Administration
SB	Senate Bill
SCF	Sierra Child & Family
SLT	South Lake Tahoe
SLTPD	South Lake Tahoe Police Department
SO	Sheriff's Office
STHS	South Tahoe High School
STRTP	Short-Term Residential Therapeutic Program
SUD	Substance Use Disorders
SV	Summitview Child & Family
SYS	Stanford Youth Solutions
T-House	Transitional Housing
TAY	Transitional Age Youth
TBD	To Be Determined
TCH	Tahoe Coalition for the Homeless
TFC	Therapeutic Foster Care
TYFS	Tahoe Youth and Family Services
Tx	Treatment
TY	Tahoe Youth & Family
UR	Utilization Review
VA	United States Department of Veterans Affairs
WET	Workforce Education and Training
WIA	Workforce Investment Act
WOIA	Workforce Innovations and Opportunities Act
WS	West Slope

Drug Medi-Cal Organized Delivery System Update February 20, 2019

Intergovernmental Agreement (IA)

The IA consists of two parts and is currently in review process at the federal level.

- County Specific Portion: The El Dorado County Substance Use Disorder Services (SUDS) Administrator has reviewed and approved this portion of the IA with DHCS. DHCS is working on allocations and has sent the County-specific portion of the IA to Centers for Medicare & Medicaid Services (CMS) for federal approval. This part of the IA is based on the EDC DMC-ODS Implementation Plan. **Link:** [EDC DMC-ODS Implementation Plan](#)
- Standard IA Language: This portion of the IA is standard with all counties who contract for DMC-ODS Services. **Link:** [2018-2019 DMC-ODS Boilerplate Intergovernmental Agreement](#)

Network Adequacy

The DMC-ODS Network Adequacy Certification Tool is undergoing final review before submission to DHCS for network certification. DHCS will review and analyze the data and documentation submitted by EDC to determine if the Plan has an adequate network of providers, sufficient in mix, number, and geographic location, to meet the needs of EDC Medi-Cal beneficiaries. DHCS will then submit to CMS for final approval.

Memorandums of Understanding (MOUs)

Three executed MOUs must be submitted to DHCS:

1. California Health and Wellness – Submitted and Approved by DHCS
2. Anthem – Still pending final execution with signatures
3. Kaiser – Still in negotiation and MOU development with Kaiser

Single Case Agreement

This document is completed and approved by DHCS

Readiness Review

There are four items still due:

1. Posting of DMC-ODS Beneficiary Handbook to County SUDS Website
2. Posting of DMC-ODS Provider Network to County SUDS Website
3. Submission of executed Anthem MOU to DHCS for approval
4. Submission of executed Kaiser MOU to DHCS for approval

SUDS staff is in the process of completing a website focused on the new DMC-ODS Services, Stakeholder Resources and Network Provider Resources. Once website is complete, the Beneficiary Handbook will be posted. Once SUDS receives the Network Provider Certification and executed contracts with DMC-ODS Providers, the Provider Network will be posted.

Current Projected Steps Towards Implementation

January 2019

- DHCS to provide draft IA to EDC by mid-January to start local review process.
 - **Completed**

February 2019

Readiness Review items:

- MOUs and Single Case Agreement to be completed and approved by DHCS.
 - **Anthem and Kaiser MOUs still pending submission and approval by DHCS**
 - **Single Case Agreement completed**
- Network Adequacy Certification Tool (NACT) documents and relevant alternative access requests are planned to be submitted to DHCS by Friday 2/22/19. (See Network Adequacy section above.)

February/March 2019

- DHCS and CMS review of Implementation Plan and Draft Version IA.

March/April 2019

- Develop Draft DMC-ODS Provider Contracts.
- Obtain DHCS/CMS approved IA and finalize Provider Contracts.
- Place on Board of Supervisor's Agenda for approvals.

May/June 2019

- Send IA with Board of Supervisor's approval to DHCS.
- Estimate 10-15 Business Days for final execution of DMC-ODS contract with DHCS.

June 2019

- EDC goes live with DMC-ODS.