



County of El Dorado
Procurement and Contracts
330 Fair Lane
Placerville, CA 95667
Attn: Ms. Gayle Erbe-Hamlin, Purchasing Agent

P. O. Box 627
7281 Lone Pine Dr., Suite D-203
Sloughhouse, CA 95683
T 916-354-1620
F 916-354-1268
planningpartners@frontiernet.net

June 11, 2009

Dear Ms. Erbe-Hamlin,

Planning Partners is pleased to submit the attached proposal to assist the County of El Dorado (County) with the development of an Integrated Natural Resources Management Plan (INRMP) for the west slope of the County at 4000 feet elevation and lower. The approach in this proposal is based on a thorough reading of the RFP and background research with interested parties on the advisory committees. Our Team consists of highly experienced, efficient, and well respected technical specialists, resource and land use planning experts, and skilled conflict resolution facilitators. We are well suited to provide the services needed for the development of the INRMP for the following reasons:

- **Extensive and Relevant Project Experience:** Our team is highly qualified to provide the range of facilitation, mapping, alternatives analysis and environmental documentation required.
- **Biology and GIS Experience:** Our team has extensive experience in a wide range of California habitats, and our project manager is a senior biologist with over 30 years of experience in California wildlife biology. Our biologists and planners are also skilled GIS analysts with experience compiling mapping layers from a wide range of sources and integrating them into cohesive and readable final maps.
- **Collaborative Process Experience for Difficult Technical Issues:** Our team has extensive experience in developing and facilitating highly successful, collaborative processes on technical policy issues with diverse stakeholders, the public, and government officials.
- **Proximity to Project Area:** Our Team includes key personnel that are located near one another and the County. We will manage the project from our primary office in Sacramento to ensure easy accessibility to the County's offices in Placerville and flexibility in coordinating with County staff.

We are confident that our professionalism, experience, integrity and pragmatic approach will benefit the County in its development of the INRMP. We look forward to your review of our team experience and to working with the County in the future.

For purposes of this proposal, the authorized contact person is Deb Martin. She can be reached at the address, phone and fax numbers shown on page one, or by email at dmartin@e-planningpartners.com. If you have any questions regarding this proposal, please contact Deb Martin or me at (916) 354-1620.

I hereby set forth that Planning Partners, a sole proprietorship, offers the above services under the cited conditions to El Dorado County to prepare technical studies and to assist the County in the development and identification of a preferred Integrated Natural Resources Management Plan alternative. As requested by the County, this offer is valid for 120 days from date of proposal.

Cordially,

Robert D. Klousner
Principal



Proposal to Prepare the El Dorado County Integrated Natural Resources Management Plan Alternatives Analysis

Prepared for: County of El Dorado
Prepared by: Planning Partners

June 11, 2009
Proposal number: 09-29





Table of Contents

Proposer's Capabilities.....	1
Executive Summary.....	1
Major Features of our Proposal.....	2
Detailed Discussion - Scope of Services.....	3
Background and Experience.....	9
Organization and Communication Strategy.....	10
Planning Partners Philosophy.....	11
Environmental Planning Services.....	11
Key Staff.....	12
Senior Consultants.....	13
Experience.....	14
Work Plan.....	18
Timeline.....	19
Insurance Requirements.....	20
Cost Proposal.....	21
Assumptions.....	21
Cost Schedule.....	22
References.....	23
Additional Information.....	25
Resumes of Key Personnel.....	25

Proposer's Capabilities

Executive Summary

Approach

Planning Partners has assembled an outstanding group of specialists with relevant experience for this project. Our proposed team of Planning Partners, Mintier Harnish, and the Center for Collaborative Planning is aware of the long and complex history leading to the development of the RFP for the Integrated Natural Resources Management Plan (INRMP), and of the competing views on many of the subject areas. Our Team's approach is to conduct a productive planning process with a focus on consensus building and mediation to develop an INRMP scope of work that is consistent with General Plan Policy 7.4.2.8.

Planning Partners, along with Mintier Harnish and the Center for Collaborative Policy, views this project as an opportunity to cooperatively guide the development of a fully compliant INRMP for the west slope of El Dorado County. Planning Partners brings a highly experienced, efficient, and well respected staff of technical specialists and planning experts, while Mintier Harnish complements the Team with planners deeply experienced in recent large-scale planning projects and alternatives development. The Center for Collaborative Policy has extensive experience in developing and facilitating highly successful, collaborative processes on technical policy issues with diverse stakeholders, the public, and government officials, including Boards of Supervisors, Planning Commissions, and scientific and citizen advisory committees. Planning Partners proposes to accomplish the Tasks described in the RFP Scope of Services, parts 1) and 2) in just over one year of contract execution. The length of time is largely dependent on the need for administrative and public review of the several environmental documents.

Options

We propose to add an optional subtask to Task 1d.

Optional Task 1d (1): Civil Engineer Consultation

Our Team will consult with El Dorado County Department of Transportation engineers and with Caltrans District 3 engineers and biologists for information on barrier effects, issues of retrofitting drainage structures and undercrossings, etc. If advised by those agencies, we will also consult with a licensed Civil Engineer for information on cost and feasibility of various such structural methods.

We propose to add an additional subtask to Task 2a.



Optional Task 2a (2): Selection of Preferred INRMP Alternative

In order to proceed with the subsequent tasks listed in the RFP, it will be necessary to select a preferred INRMP alternative. To accomplish that selection, we propose a series of professionally-facilitated consensus-building meetings with the PAWTAC and ISAC. After meeting first with County staff, we will meet with each committee separately to develop a clear understanding of each committee's concerns, expectations, and ideas about workable alternatives. We will then facilitate a joint committee consensus building effort intended to result in the selection of a preferred INRMP alternative.

Major Requirements

There are no major requirements that cannot be met by our team.

Major Features of our Proposal

Planning Partners and our subconsultants, Mintier-Harnish and the Center for Collaborative Policy (Team), will employ our skills to foster cooperation and strive to reach consensus with relevant parties on the definition of General Plan terms. Our approach includes beginning the process by conducting an assessment to determine how the parties can work with each other, and to provide a roadmap for the Consultant Team and County staff to collaboratively prepare the final Habitat Inventory Report and Map and the final INRMP Implementation Alternatives Report. We will assemble and analyze existing GIS and biological data and use them to compile layers and update the Initial Inventory Map. We will develop, discuss, and recommend a list of Indicator Species to assist in the selection of core habitats, wildlife movement corridors, and habitat linkages. We will research previous study reports, analyze the need for, and develop alternative locations for north-south wildlife movement corridors and linkages. We will research the feasibility and cost of the identified options, and the means to achieve and preserve them.

Our Team will assist the County in identifying alternative approaches for preparation and implementation of the INRMP. We will examine the experience of other jurisdictions, develop viable options, and analyze the advantages and disadvantages of each alternative. We will prepare an administrative draft, and a public review draft Alternatives Report based on our research. Following consensus-building meetings to choose a preferred alternative, our Team will prepare a final INRMP Implementation Alternatives Report.

Identification of Relevant Supporting Materials

Supporting materials included with this proposal (Section I, Additional Data) consist of five focused resumes of the key personnel on our Team.

Detailed Discussion - Scope of Services

The El Dorado County INRMP for the west slope will be developed by a highly experienced, efficient, and well-respected staff of technical specialists and planning experts, complimented by a skilled professional mediator. Our Team is uniquely positioned to find innovative solutions to complex policy decisions and to build support for implementation among stakeholders and agencies. Our Team organization chart is provided to illustrate both the flow of information within our Team and between the Consulting Team and the County. We have assigned a Project Manager, Deb Martin, for the Consulting Team who will coordinate with the County staff on a regular basis.

Task 1: Map Important Habitat and Connectivity

Our Team will compile, and update as necessary, the existing habitat inventory and mapping data layers prepared to comply with General Plan Policy 7.4.2.8. To be consistent with General Plan policy, the inventory needs to be updated every three years with the assistance of the PAWTAC, CDFG and USFWS. To facilitate future updates, our Team will establish a streamlined and organized update methodology. The following subtasks describe each of these steps in greater detail:

Task 1a (1): Situation Assessment for Designing a Successful Process

Our professional mediators from the Center for Collaborative Policy have had notable success with situations similar to the El Dorado County INRMP development process through conducting a thorough assessment of the often complex policy, political, and historic dynamics at play and then crafting a process design that can achieve the articulated goals of the project.

Within the first two months of our participation on the INRMP development, our professional mediators will develop a roadmap of the specific steps to achieve understanding, dialogue and as much common ground as possible among the Board of Supervisors, Planning Commissioners, Agricultural Commission, County staff, and the members of the Plant and Wildlife Technical Advisory Committee (PAWTAC) and INRMP Stakeholder Advisory Committee (ISAC). The Board of Supervisors as the final decision-makers will be clearly reflected in the process design recommendations. Suggested solutions to barriers will be addressed. If appropriate, the Center can develop language the PAWTAC and ISAC can use guide its interactions within the Committee as well as with County decision-makers.

For this effort, our Team will conduct an assessment to determine how the parties can work with each other, our Team and County staff. The assessment involves:

- Overall assessment preparation and development of interview questionnaire;
- Interviews with one or two members from each of the Board of Supervisors, Department of Transportation, Planning Commission, Agricultural Commission, PAWTAC and ISAC;
- Development of draft and final findings and recommendations for review with interviewees.

Throughout, we will continually confer with, and be guided by, County staff.

Our Team will develop a concise INRMP Strategic Guidance Memo, which details the specifics of a year-long process for productive discussions focusing on habitat mapping, habitat protections strategy, mitigation assistance, habitat acquisition, habitat management, habitat monitoring and the Biological Corridor overlay. In the development of this process design, the goal will be consensus-building, with the understanding that differing perspectives are likely to remain unresolved, and that in the end, the Board of Supervisors are the decision-makers. The INRMP Strategic Guidance Memo will suggest a process that provides articulated expectations, rules for engagement, role clarifications, and a roadmap for each month that specifies the timing and purpose of meetings, the formal interactions among the parties listed in the above paragraph (see #2), and milestones to measure progress. Barriers to success will also be identified, along with proposed approaches for reducing or eliminating these barriers. Sometimes parties benefit more from an extensive overhead presentation, oral presentation or detailed annotated outline than from formal memos, and adjustments will be made. At the conclusion of this subtask, our Team and County staff will have a strategic roadmap to guide their important work from that point forward.

Task 1a (2): Define Terminology

Our Team will assist the County by striving for accord on the definition of important terminology used in the General Plan, with particular focus on three key terms: “important habitat,” “large expanses,” and “native vegetation.” Our experienced biologists will research the range of uses of the key terms in the relevant documents and literature. The Assessment in Task 1a.1 will query several members of PAWTAC, ISAC, and County Board of Supervisors (BOS) regarding their understanding of, and concerns about, the definitions of the key terms. Our Team will then arrange for and lead two separate meetings, one with PAWTAC and one with ISAC; followed by two joint meetings with both committees and the BOS. All meetings will take place in Placerville and will be attended by our Project Manager and our Team biologists. Information gathering methods other than meetings may be used if indicated by the Strategic Guidance Memo.

If consensus on definitions cannot be reached after four meetings, we will submit our meetings summary to the BOS, identifying the range of opinions, and our recommendations. We will ask the BOS for consideration and to action on one of three options: (1) we can hold further facilitated meetings in attempt to reach consensus on Task 1a, (2) the BOS can select the definitions and our Team will move on to the next tasks, or (3) the BOS can select the definitions and direct our Team to move on to the next tasks, abandoning all further attempt at consensus building, and not involving the advisory committees in further meetings after Task 1a.

If more consensus seeking meetings are desired by the BOS after the first four (option 1 above), such additional meetings will need to be authorized by the County and will be at a per-meeting cost, as presented in the cost estimate. For the purposes of this proposal, we assume that our Team will continue on to the other Tasks, whether or not consensus is reached in Task 1a.

Task 1b: Refine INRMP Initial Inventory Mapping Layers

Based on the key term definitions established in Task 1a, the Team biologists will review and analyze the INRMP Initial Inventory Map layers and all relevant documents and maps, including the Oak Woodlands Management Plan, Priority Conservation Areas, Ecological Preserve lands, publicly-

owned lands, conservation easements, and lands designated “open space” or “natural resource” in the General Plan. Biologically-related changes to the west slope that may have occurred since various data layers of the map were prepared will be researched, and the Initial Inventory Map will be updated. We assume that no field truthing or additional vegetation, habitat, or land cover GIS data capture will be necessary for finalization of the Inventory Map.

Task 1c: Develop a Recommended List of Indicator Species

Our Team understands that monitoring Indicator Species within varied habitat types can be an important tool in assuring the maintenance of viable populations of many interrelated native and non-native plants and animals. We also understand that the biologically most important natural habitat types of the western slope have already been identified and mapped by earlier work. Once natural habitat quality, condition, and size have been updated by work in Task 1b, our Team biologists will establish criteria for selection of indicator species, or guilds of species, such as: affinity for a vegetative type; life cycle keyed to a vegetative type; sensitivity to habitat change; relative ease of monitoring (i.e. easily recognized and adequate numbers); and relationship/links to other species. Using the appropriate criteria, we will then develop a recommended list of indicator species for use in identifying (or reaffirming) potentially important core habitat areas, corridors, and linkages. For each species, relevant characteristics will be discussed. Our Team biologists are adept at using available data and established techniques to identify core habitat areas, wildlife movement corridors, and habitat linkages.

Task 1d: North-South Wildlife Movement Corridor and Linkage Evaluation

Our Team will conduct the following steps necessary to evaluate north-south wildlife movement corridors and linkages:

- Analyze prior research studies.
- Identify species with north-south migration patterns.
- Summarize likely effects of barriers to species migration in El Dorado County.
- Analyze the barrier effect of Highway 50 and other major roadways.
- Identify existing locations along Highway 50 that allow safe passage for terrestrial mammals.
- Examine and discuss issues involved with retrofitting existing drainage structures and undercrossings to provide for discrete wildlife crossings, including an approximation of the cost, to allow the County to assess the feasibility of such an approach.
- Identify alternative locations for wildlife movement across Highway 50, and examine the relative feasibility of those locations.

Our Team will address the technical topics of identifying species with north-south migration patterns, research previous studies, and research retrofitting of existing drainage structures. Utilizing the INRMP Strategic Guidance Memo developed in Task 1a.1, we will work with County staff, the advisory committees, and other stakeholders, on the issues that will require consensus building, including the extent of the need for corridor preservation and the feasibility of corridor preservation techniques. We will guide four joint committee consensus-building meetings on these



topics, as needed. Consensus-building methods other than meetings may be used if indicated by the Strategic Guidance Memo.

If consensus between the two advisory committees cannot be reached after four meetings, further meetings may be necessary. Such additional meetings will need to be authorized by the County and will be at a per-meeting cost, as presented in the cost estimate.

Task 1d (1): Civil Engineer Consultation (optional)

Our Team will consult with El Dorado County Department of Transportation engineers and with Caltrans District 3 engineers and biologists for information on barrier effects, issues of retrofitting drainage structures and undercrossings, etc. If advised by those agencies, we will also consult with a licensed Civil Engineer for information on cost and feasibility of various such structural methods. This consultation will be at an additional cost, as presented in the Cost Estimate.

Task 1e: Deliverables

Our Team will provide administrative drafts, public review drafts, and final reports for: Important Habitat Inventory, Indicator Species, and Analysis of North-South Wildlife Movement Corridors.

- INRMP Strategic Guidance Memo (10 hard copies, 10 CDs)
- Administrative Review Draft Updated Important Habitat Inventory and Map (10 large format copies ; 1 CD)
- Public Review Draft Updated Important Habitat Inventory and Map (30 hard copies; 10 CDs)
- Final Updated Important Habitat Inventory and Map (10 hard copies; 10 CDs)
- Administrative Review Draft Updated Indicator Species Report (ten hard copies; 1 CD)
- Public Review Draft Updated Indicator Species Report (50 hard copies; 10 CDs)
- Final Indicator Species Report (10 hard copies; 10 CDs)
- Administrative Review Draft Analysis of North-South Wildlife Movement Corridors Report (10 hard copies; 1 CD)
- Public Review Draft Analysis of North-South Wildlife Movement Corridors Report (50 hard copies; 10 CDs)
- Final Analysis of North-South Wildlife Movement Corridors Report (10 hard copies; 10 CDs)
- Handouts for meetings – 25 per meeting / 10 meetings

Alternately, if the County wishes to conserve resources, we will post the draft Administrative and Public Review maps and reports on the INRMP website or other ftp website and produce hard copies only for the final documents or when requested or necessary. Both options are presented in the Cost Proposal.

Task 2: Assist the County in Identifying Alternative Approaches for Preparation of the INRMP

Utilizing the INRMP Strategic Guidance Memo developed in Task 1a.1, our Team will work with County staff, advisory committees, and other stakeholders to identify alternative approaches for the implementation of the INRMP, including: a habitat protection strategy, mitigation assistance program, habitat acquisition program, habitat monitoring program, public participation program, funding, and north-south wildlife movement corridors and linkages. The alternative approaches will be developed through a collaborative process at regularly scheduled meetings. We will prepare an administrative draft, and a public review draft alternatives report based on our research. During a second round of meetings, our Team will work with County staff, advisory committees, and other stakeholders to select the preferred alternative for the INRMP. When a preferred alternative is chosen, our Team will prepare a final INRMP Implementation Alternatives Report. Following this report, our Team will work with County staff to prepare a revised INRMP scope of work. The following subtasks describe each of these steps in greater detail:

Task 2a (1): Identify a Range of Alternatives

Utilizing the INRMP Strategic Guidance Memo developed in Task 1a.1, our Team will identify a range of alternative approaches available to the County to complete the remaining tasks necessary to implement the INRMP, including habitat protection, acquisition, mitigation, funding, public participation, and management. We will also include the north-south wildlife movement corridor and linkage alternatives identified under Task 1(d) in this process. We will research and present methodology employed in other jurisdictions for similar plans and programs and identify the advantages and disadvantages of each alternative. We will prepare an administrative draft Alternatives Report that includes the results of our research and evaluation. Following review and comment by County staff, we will prepare a Public Review Draft Alternatives Report for use by the Development Services Department, Department of Transportation, Planning Commission, Agricultural Commission, PAWTAC, ISAC, and Board of Supervisors in selecting a preferred alternative.

Task 2a (2): Select a Preferred INRPM Alternative (optional)

Utilizing the INRMP Strategic Guidance Memo developed in Task 1a.1, our Team will facilitate a series of consensus-building meetings with the PAWTAC and ISAC. Four consensus-building meetings are included in the scope and budget. Consensus-building methods other than meetings may be used if indicated by the Strategic Guidance Memo. If after diligent effort, consensus between the two advisory committees cannot be reached after three meetings, further meetings may be necessary. Such additional meetings will need to be authorized by the County and will be at a per-meeting cost, as presented in the cost estimate. In the alternative, the Alternatives Report, along with the results of the consensus building effort may be presented to the Board of Supervisors for selection of a preferred alternative. In either case, the Board will adopt the alternatives selection. A final INRMP Implementation Report will be prepared describing the preferred alternative.

Task 2b: Prepare Revised INRMP Implementation Work Scope

Our Team will prepare a Draft INRMP Implementation work scope and schedule based on General Plan Policies 7.4.2.8 and 7.4.2.9, Implementation Measures CO-M and CO-N, and the Preferred Alternative approved by the Board of Supervisors. We will include a detailed description of objectives, end products, required services, key milestones, and schedule. We will submit the draft work scope to County staff, the PAWTAC, and the ISAC for review and comment. We will prepare a final implementation work scope based on staff and committee comments.

Task 2c: Deliverables

Our Team will provide administrative drafts, review drafts, and final reports for: INRMP Alternatives, the Preferred INRMP Alternative, and INRMP Work Scope and Schedule.

- Administrative Review Draft INRMP Alternatives (Five hard copies; 1 CDs)
- Public Review Draft INRMP Alternatives (25 hard copies; 10 CDs)
- Administrative Review Draft Preferred Alternatives Report (Five hard copies; 1 CDs)
- Final Preferred Alternatives Report (25 hard copies; 10 CDs)
- Draft INRMP Implementation Work Scope and Schedule (25 hard copies; 10 CDs)
- Final INRMP Implementation Work Scope and Schedule (25 hard copies; 10 CDs)

Alternately, if the County wishes to conserve resources, we will post the Administrative and Review draft reports on the INRMP website or other ftp website and produce hard copies only for the final documents or when requested or necessary. Both options are presented in the Cost Proposal.

Task 3: Schedule

Our Team will establish a Schedule as Part of the INRMP Implementation Work Scope (see Task 2b).



Background and Experience

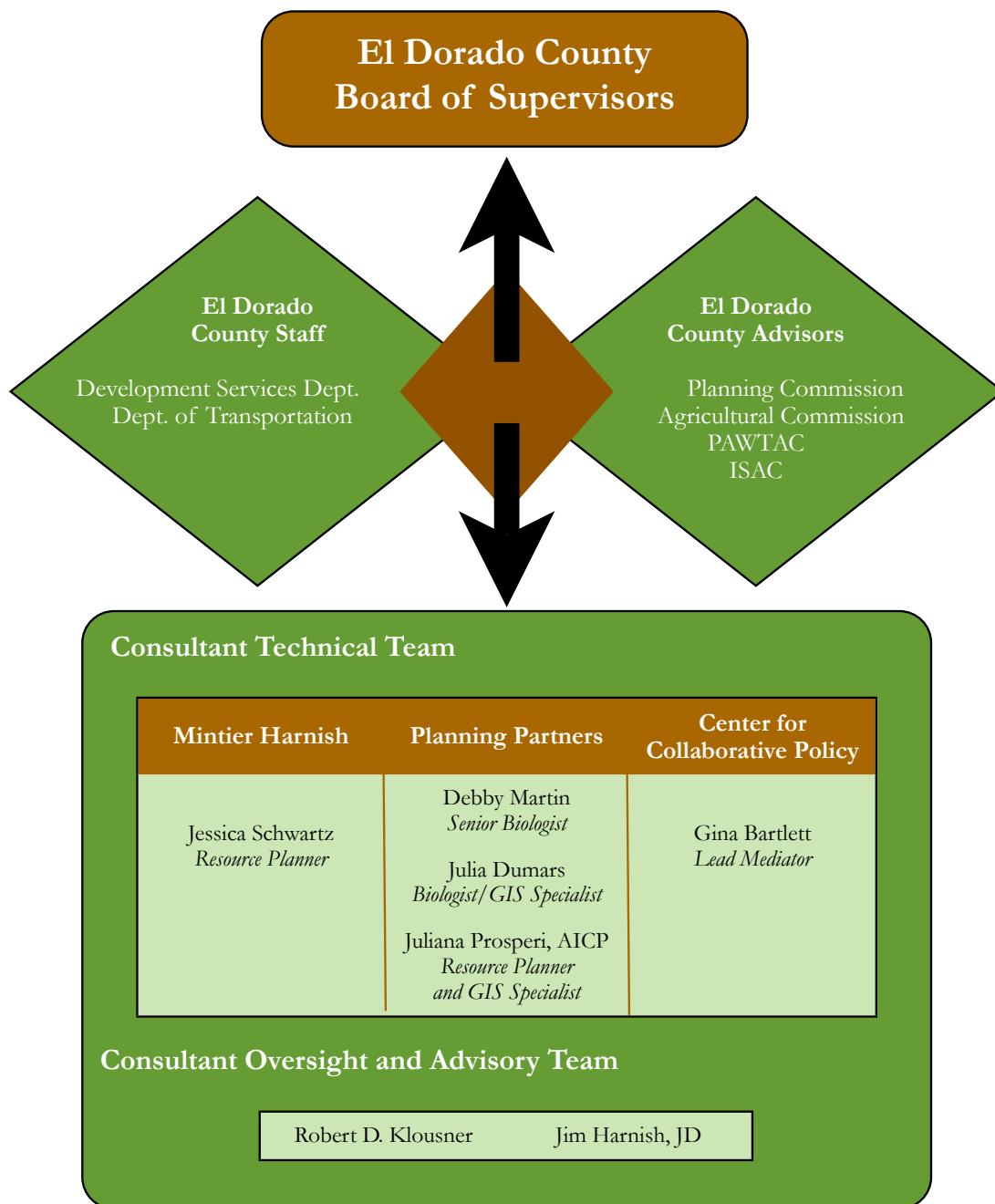
Since 1995, the Planning Partners team has provided environmental planning and biological technical services to clients that have ranged from counties, cities, special districts, to private parties. Over this 14-year period, we have developed and refined our practice to address the continually evolving regulatory and legal environment surrounding natural resources and local agency interactions with federal and state resource agencies. As illustrated on the organization and communication Chart, for the INRMP project, we have assembled an expert team composed of Planning Partners biological and GIS staff, policy and implementation experts from Mintier Harnish Planning Consultants, and the Center for Collaborative Planning for process management. We propose an interactive process involving our technical experts, strategic process management, and consultation with key County decision makers, advisors and staff throughout the INRMP development process. At key points we will seek review and advice from County advisory bodies, and ultimately decisions from the Board of Supervisors.

Following is a description of each member of our team, followed by brief biographies of key staff, and the experience of the team.



Planning Partners is a full-service environmental compliance consulting firm, specializing in the preparation of environmental technical studies and environmental documents pursuant to National Environmental Policy Act (NEPA) and California Environmental Quality Act (CEQA) requirements. At Planning Partners, our mission since 1995 has been to provide successful project management and consulting services in partnership with our clients. Our primary role is in forging strong team relationships with representatives of government, special districts, and the private sector. These vital relationships help our clients meet significant objectives, whether those be meeting a public need, providing public services, complying with state or federal law, or earning a return on investment. Our continuous services extend from the initial identification of a need or a problem to be solved, through the planning and permitting process, and into project implementation. The goal of Planning Partners is to provide each of our clients with the highest quality of professional service - to respond efficiently to each client's unique needs and circumstances with a sound, strategic management plan implemented with credibility and integrity.

Organization and Communication Strategy



Planning Partners Philosophy

We implement our philosophy by:

- Providing a full range of project planning and environmental compliance professional staff;
- Assigning only experienced staff to reduce learning curve time and maintain high technical standards;
- Planning and implementing a strategic, forward-looking management and compliance plan so that every action taken is a step toward ultimate project success;
- Drafting and implementing a practical, context-appropriate environmental and regulatory compliance strategy that responds to local needs and conditions; and,
- Continuing education to ensure the preparation of legally adequate documents and compliance strategies.

Environmental Planning Services

Planning Partners offer the following environmental services:

• Environmental Technical Analyses	• CEQA/NEPA Compliance
• Public Outreach & Education	• Regulatory compliance and agency permitting
• CEQA/NEPA Consistency Review	• Project Planning and Alternatives Development
• Evaluation, and Decision Analysis	• GIS and data management
• Project Management for projects undertaken by government or special districts	



Mintier Harnish is a Sacramento-based planning consulting firm specializing in development, land use, and environmental issues. Since the firm's founding in 1985, they have served over 80 public agencies and over 50 development companies, law firms, and other private organizations. The firm offers the following services:

- Preparation, revision, and evaluation of general plans and general plan elements
- Preparation of specific plans and project plans for public and private sector clients
- Assistance in processing development plans and applications through governmental review and approval procedures
- Third-party peer review of environmental documents
- Management of large planning projects

- Drafting of zoning ordinances and other implementation programs
- Consulting and expert witness testimony in connection with land use litigation
- Development of training programs, workshops, and educational materials for citizens and public officials
- Evaluation of public agency regulatory procedures



California State University, Sacramento Center for Collaborative Policy

The Center for Collaborative Policy, California State University, Sacramento (Center) has extensive experience in developing and facilitating highly successful, collaborative processes on technical policy issues with diverse stakeholders, the public, and government officials, including Boards of Supervisors, Planning Commissions, and scientific and citizen advisory committees. Their notable record of achievement is linked to their practice of conducting a thorough assessment of the often complex policy, political, and historic dynamics at play and then crafting a process design that can achieve the articulated goals of the project.

Key Staff

Deb Martin, Senior Biologist and Project Manager, has 28 years of experience in California biology. Ms. Martin conducts and manages studies for special status plant and wildlife species, ranging from initial reconnaissance surveys to protocol surveys, mitigation design, implementation and monitoring. Ms. Martin is proficient in project management, habitat evaluation and conservation, agency compliance, interagency coordination, biological impact assessment, wetland evaluation, and habitat mapping. She is experienced and skilled in technical writing of biological portions of environmental documents, and in the development of biological education materials.

Julia Dumars, Planning Partners' Biologist, has over 12 years of professional experience as an environmental scientist and biologist. Her skills includes mapping vegetation communities, and conducting GIS analysis and map development, habitat assessments, threatened and endangered species surveys, and wetland delineations. Ms. Dumars is well versed in interpreting aerial photographs, GIS datasets and technical reports to assemble an understanding of wildlife habitat relationships in diverse vegetation communities.

Juliana Prosperi, AICP, a Senior Planner with Planning Partners, has 8 years of experience as a planner and analyst working on projects ranging from authoring environmental documents for new schools, health care campuses, parks and trail development, to conducting site assessments and feasibility studies. She provides NEPA, CEQA, and TRPA compliance support, environmental review, GIS analysis, planning support, and facilitation and outreach services. Prior to joining Planning Partners, Ms. Prosperi was an environmental specialist in green building and design and park and recreation projects. She worked as a GIS Analyst at the USEPA-New England office in



Boston. She has a strong background in using GIS applications, providing interagency coordination, facilitating community outreach efforts, and has a strong interest in global climate change and sustainable development.

Jessica Schwartz of Mintier Harnish has three years experience as a planner in the public and private sectors. She specializes in long-range planning and policy, rural community planning, resource conservation planning, and housing. Ms. Schwartz has a Master of Regional Planning from the University of Massachusetts, Amherst.

Gina Bartlett of CCP serves as a public policy mediator and facilitator for state and local governments, and business and interest groups. Her work is primarily concentrated in mediating natural resource issues, conducting situation assessments and facilitating organizational change. Ms. Bartlett has worked on efforts related to forest management, water supply, open space, public access, natural resource management, recreation, and land use.

Senior Consultants

Planning Partners' principal, **Robert D. Klousner**, is a broadly experienced land use and environmental planner with a focus on environmental impact analysis, and planning and project administration. He has authored over 650 planning studies, environmental documents, and environmental determinations in his 28 years as a planning professional. Mr. Klousner possesses an in-depth knowledge of California and Federal planning and environmental law, quantitative planning methods, needs analysis, and decision analysis. He specializes in the resolution of complex planning issues among diverse interest groups, including preservationists and environmentalists, developers, and local, state, and federal agencies.

Jim Harnish is a Principal of Mintier Harnish. He has 38 years of experience in land use and environmental planning. He is also an attorney with extensive experience in land use and CEQA. He has managed large organizations for both public agencies and private consulting firms. He specializes in project management for general plans, specific plans, and large private planning projects; CEQA compliance and environmental document peer review; zoning and regulatory ordinance preparation; and public outreach and consensus building.



Experience

The Consultant Team has long experience in assisting local agencies in resolving difficult technical issues regarding the intersection of resource management and the needs of urban development. In assisting our clients, the Team's focus is on practical solutions that meet local needs while satisfying regulatory requirements of state and federal agencies. While the following list of projects may appear dissimilar, the projects represent our individual and shared experiences regarding developing and implementing policy, managing resources, engaging in strategic and effective policy consideration and implementation, and helping resolve community concerns and desires. A description of each of these projects appear below, including a reference contact name. Complete reference contact information is included in Section H.

City of Plymouth Water Pipeline (Planning Partners)

Planning Partners prepared an Environmental Assessment and Environmental Impact Report (EA/EIR) for USDA Rural Development, HUD, and the City of Plymouth to evaluate the environmental effects of constructing a new water pipeline to connect Plymouth to the Amador Water Agency's water distribution system. Required consultations under the National Environmental Policy Act (NEPA) indicated that the U.S. Fish & Wildlife Service was concerned with the indirect effects to biological resources from the potential increase in urban development within the City to be served by the new water supply. Planning Partners assisted the City, the Amador Water Agency, and USDA Rural Development in negotiating a memorandum of understanding with the Service regarding the City's and Agency's responsibilities to regulate biological resource effects. Enactment of the MOU permitted the City and Agency to proceed with federal funding and construction of the project.

Reference: Terry Cox

City of Plymouth

Completion Date: 2005-2009

Greenwood Lake Water Treatment Plant and Treated Water Pipeline (Planning Partners)

Planning Partners prepared an Environmental Assessment and Environmental Impact Report (EA/EIR) for U.S. EPA and the Georgetown Divide Public Utility District to evaluate the environmental effects of constructing and operating a new water treatment plant at Tanner Reservoir near Georgetown, and constructing a new water pipeline to connect to the District's water distribution system. Required consultations under the National Environmental Policy Act (NEPA) indicated that the U.S. Fish & Wildlife Service was concerned with the indirect effects to biological resources from the potential increase in urban development to be served by the new water supply. Planning Partners assisted the District and EPA in negotiating a memorandum of understanding with the Service regarding the District's responsibilities to regulate biological resource effects. Enactment of the MOU permitted the District to proceed with federal funding and construction of the project.



Reference: Hank White

Georgetown Divide Public Utility District
Completion Date: 2005-2008

San Joaquin County General Plan Update (Planning Partners & Mintier Harnish)

Mintier Harnish and Planning Partners are preparing a comprehensive update of San Joaquin County's General Plan. Key issues in the update include: preserving agriculture, open space, and the Delta; addressing unincorporated community needs and sustainable development; collaborating with cities; addressing water and air quality issues; and addressing climate change. The Consultants are completing a Policy Document, General Plan Background Report, Issues and Opportunities Report, Alternatives Report, and an update to the County's Development Code.

Reference: Kerry Sullivan, Community Development Director

San Joaquin County
Completion Date: In Progress

Merced County General Plan Update and EIR (Planning Partners & Mintier Harnish)

Mintier Harnish and Planning Partners are preparing a comprehensive update of Merced County's General Plan. Key issues in the update include preserving agriculture and open space, establishing urban growth boundaries, addressing water and air quality issues, and exploring alternative transportation methods. The Consultants are completing a Policy Document, General Plan Background Report, Issues and Opportunities Report, preferred land use alternatives, and Environmental Impact Report.

Reference: Robert A. Lewis, Development Services Director

Merced County
Completion Date: In Progress

Calaveras County General Plan Update – Water Element (Mintier Harnish & CCP)

Mintier Harnish is partnered with Center for Collaborative Policy and Montgomery Watson Harza to develop a Water Element for the Calaveras County General Plan Update through a public process involving water and sewer districts in the county, community planning organizations, and interested residents. The Water Element was funded through Calaveras County Water District and supported by both CCWD's Board and the Calaveras County Board of Supervisors. From September 2008 to February 2009 the Water Element stakeholders and Consultants met to discuss major issue and opportunities, goals, policies, and programs. The resulting Water Element was presented to the Calaveras County Board of Supervisors in February 2009 and will be included in the County's General Plan Update, which is scheduled for completion in 2010.



Reference: Roger Putty, P.E., Principal Engineer

Montgomery Watson Harza
Completion Date: In Progress

Lake Tahoe Restoration Project (CCP)

CCP assisted the agencies managing and restoring Lake Tahoe's resources with a new effort designed to protect the lake for future generations. Called "Pathway 2007," it is a cooperative endeavor by the Tahoe Regional Planning Agency (TRPA), the U.S. Forest Service, the U.S. Army Corps of Engineers, and environmental regulators from Nevada and California, who hope to coordinate long-term development and ecological strategies affecting the lake and those who live or visit there. CCP provides facilitation, public outreach and strategic advice for the Basin's collaborative effort. The collaborative utilizes structured stakeholder processes in setting Lake Tahoe Basin public policy. CCP assists P7 in achieving a series of goals including alignment among different Basin agencies, integration of a cohesive set of supported, usable planning tools, enhancement of interagency trust, and coordination of effective public participation.

Reference: Phil Brozek

U.S. Army Corps of Engineers – Sacramento District
Period of Performance: 2004-2006

California Water Plan Update (CCP)

The Center worked with the California Department of Water Resources (DWR) to design and implement a highly transparent, stakeholder consensus process for California's strategic water "master plan." Called the California Water Plan, it makes projections about California's future water demand and recommends actions to meet the state's future water needs. Pioneering features of the Center's work included: leveraging DWR's technical knowledge and expertise with community-based input and feedback, utilization of a 65-member public advisory committee, design of multiple planning scenarios and planning assumptions, and the creation of broad based consensus policy recommendations. The success of the California Water Plan collaborative process has attracted attention in the fields of conflict resolution and public administration. The Water Plan Update 2009 is currently underway with more extensive stakeholder involvement and an unprecedented degree of agency coordination.

Reference: Kamyar Guivetchi

Manager, Statewide Integrated Water Management
Period of Performance: 2001-current (in progress)



Lake Davis Pike Eradication Project – California Department of Fish and Game U.S Forest Service Plumas National Forest (CCP)

In 1999, northern pike were rediscovered in Lake Davis, a noted world-class trout fishery in eastern Plumas County. California Northern pike are an illegally introduced, non-native predatory species that have the potential to do irreversible damage to California's aquatic ecosystems and fisheries. The initial eradication attempt by the California Department of Fish and Game (CDFG) in 1997 was highly controversial and the subject of international media coverage. The Center was requested to foster a collaborative environment between CDFG, the Steering Committee (a group of local Plumas County residents), the U.S. Forest Service, and other State and Federal regulatory agencies. The goal of the project was to eradicate pike from the lake, protect California aquatic ecosystems and fisheries from being impacted by northern pike, restore Lake Davis to a world-class fishery, and minimize the impact to the local economy. To accomplish these goals, the Center helped CDFG conduct public involvement and outreach activities. The process included informational workshops, stakeholder communications, project newsletters, media promotion, risk communication training, and public involvement in the Environmental Impact Report/Environmental Impact Study. The Center also assisted with the post-project restocking publicity and event planning.

Reference: Ed Pert

California Department of Fish and Game
Period of Performance: 2005-2008

Reference: Angela Dillingham

U.S. Forest Service
Plumas National Forest Supervisor's Office
Period of Performance: 2005-2008

Work Plan

We have developed our approach to assisting the County with the development of a fully compliant INRMP for the west slope of El Dorado County based on the experiences of our highly qualified and professional team with projects having similar technical and process requirements. Our experienced team possesses the skills necessary to address the following basic elements of the project:

- Strategic approach to collaborative and successful policy development
- Biological resource technical research and analysis
- Use of existing technical data for alternatives development
- Close coordination with County staff, advisory committees, and the Board of Supervisors
- Results-oriented project management to assure timely completion of tasks

Our detailed Work Plan is presented in Section C, Proposer's Capabilities, and summarized in the following Task Completion Schedule.



[illegible]

Insurance Requirements

Insurance requirements as specified in the Request for Proposals have been reviewed by our insurers. Planning Partners' insurance policies currently in effect meet and/or exceed the minimum requirements as specified in the Request for Proposals.



Cost Proposal

The cost information presented herein reflects Planning Partners' estimate of the work necessary to assist the County develop and evaluate alternative approaches to the INRMP based on our proposed scope of work and our knowledge of similar projects. We estimate that the cost to complete our proposed scope of work would be \$199,744. Please see the following table for a complete breakdown of Planning Partners' estimated costs to complete the project through this point.

Assumptions

In addition to the assumptions listed in the preceding scope of work, the scope, schedule, and cost provisions of this proposal are based upon several assumptions that are summarized below to further define the proposed scope of work. We recognize that these assumptions may be subject to change by the County during the project. While such changes would not necessarily result in modification of the scope, schedule, or cost, Planning Partners must reserve the right to propose such modifications in the event of such changes.

- Issues to be addressed in the INRMP development process will be limited to those identified in this proposal. Issues that emerge after contract commencement are not now included in the proposed scope of work.
- The scope of work shall be considered entire for the project. Tasks not explicitly included in the scope of work are hereby excluded.
- County staff and others will cooperate with the consultant team promptly. Work will not be stopped or delayed by the County or others outside the study team. Should work be so stopped or delayed for a period exceeding 60 days, Planning Partners will be reimbursed for costs to date. Should work be stopped or delayed by others, Planning Partners shall have the right to renegotiate costs of work required after the proposed project completion date as set forth in the Schedule in Chapter E, or January 1, 2010, the beginning of Planning Partners' subsequent fiscal year, whichever is later.
- The combined number of meetings at which a representative or representatives of the consultant team will be present will not exceed those presented in the cost proposal and scope of work. Additional meetings will be charged on a time and materials basis.
- Planning Partners will provide copies of all work products cited above in the proposed scope of work. Additional reproduction and distribution shall be the responsibility of the County.
- The proposed scope of work, schedule, and budget are valid for 120 days from the date of this proposal. Should a contract not be executed or funded prior to that time, Planning Partners reserves the right to modify the budget and schedule as specified in the cost estimate.
- No field truthing or additional vegetation, habitat, or land cover GIS data capture will be necessary for finalization of the Inventory Map.

Cost Estimate

			Center For Collaborative Policy		Mintier Harnish				Planning Partners									
			Conflict Specialist		Principal-in-Charge		Sr. Planner		Principal-in-Charge		Project Manager/ Sr. Biologist		Biologist/GIS		GIS/Planning		Admin. Asst.	
			Gina Bartlett		Jim Harnish		Jessica Schwartz		Robert Klousner		Deb Martin		Julia Dumars		Juliana Prosperi		Mary Wilson	
Task	Task Description	Involved Consultants	Hours	Cost	Hours	Cost	Hours	Cost	Hours	Cost	Hours	Cost	Hours	Cost	Hours	Cost	Hours	Cost
1	Map Important Habitat and Connectivity																	
1a	Facilitate discussions, define terms	CCP, MH, PP	40	\$6,600.00			8	\$1,200.00			32	\$4,320.00						
1b	Use existing data to update map layers	PP									24	\$3,240.00	60	\$5,700.00	40	\$4,200.00		
1c	Develop list of indicator species and discuss	PP									32	\$4,320.00	32	\$3,040.00				
1d	Wildlife movement corridors and linkages	CCP, MH PP	32	\$5,280.00			40	\$6,000.00			64	\$8,640.00	50	\$4,750.00	32	\$3,360.00		
1e (1)	Important Habitat Map Admin/ Public/Final	MH, PP			8	\$1,400.00	8	\$1,200.00	8	\$1,200.00	16	\$2,160.00	24	\$2,280.00	20	\$2,100.00	16	\$928.00
1e (2)	Indicator Species Report Admin/ Public/Final	MH, PP			8	\$1,400.00	8	\$1,200.00	8	\$1,200.00	32	\$4,320.00	16	\$1,520.00	16	\$1,680.00	16	\$928.00
1e (3)	North-South Corridor Admin/Public/Final	MH, PP							8	\$1,200.00	32	\$4,320.00	16	\$1,520.00	16	\$1,680.00	16	\$928.00
	Total Task 1	\$93,814.00	72	\$11,880.00	16	\$2,800.00	64	\$9,600.00	24	\$3,600.00	232	\$31,320.00	198	\$18,810.00	124	\$13,020.00	48	\$2,784.00
2	Assist in identifying approaches for INRMP																	
2a (1)	Identify range of alternatives	MH, PP					40	\$6,000.00			40	\$5,400.00			40	\$4,200.00		
2a (2)	Help parties reach consensus on preferred alternative	CCP, MH, PP	40	\$6,600.00			40	\$6,000.00			16	\$2,160.00			16	\$2,160.00		
2b	Assist County in prep of revised Scope of Work	MH, PP					24	\$3,600.00			16	\$2,160.00			12	\$1,260.00		
2c	INRMP Alternatives Report: Admin, Public & Final Drafts	MH, PP			20	\$3,500.00	108	\$16,200.00	24	\$3,600.00	40	\$5,400.00			50	\$5,250.00	80	\$4,640.00
	Total Task 2	\$81,090.00	40	\$6,600.00	20	\$3,500.00	212	\$31,800.00	24	\$3,600.00	112	\$15,120.00	0	\$0.00	118	\$12,870.00	80	\$7,600.00
3	Schedule of key milestones																	
	Schedule of key milestones	PP, MH			10	\$1,750.00	60	\$9,000.00	10	\$1,500.00	20	\$2,700.00			10	\$1,050.00		
	Total Task 3	\$16,000	0	\$0.00	10	\$1,750.00	60	\$9,000.00	10	\$1,500.00	20	\$2,700.00	0	\$0.00	10	\$1,050.00	0	\$0.00

Total Labor **\$190,904.00**
Total Materials (\$500/meeting) **\$7,000.00**
Total Cost **\$197,904.00**

Additional meetings will be conducted at a total time and materials per meeting cost of \$5500



References

City of Plymouth Water Pipeline (Planning Partners)

Terry Cox
Project Development Administrator
City of Plymouth
P.O. Box 429
Plymouth, CA 95669
Phone: (209) 533-8810

Greenwood Lake Water Treatment Plant and Treated Water Pipeline (Planning Partners)

Hank White
District Manager
Georgetown Divide Public Utility District
P.O. Box 4240
Georgetown, CA 95634
Phone: (530) 333-4356

San Joaquin County General Plan Update (Planning Partners & Mintier Harnish)

Kerry Sullivan, Community Development Director
Community Development Department
San Joaquin County
1810 East Hazelton Avenue, Stockton, CA 9520
Phone: (209) 468-3124

Merced County General Plan Update and EIR (Planning Partners & Mintier Harnish)

Robert A. Lewis, Development Services Director
Planning and Community Development Department
Merced County
2222 "M" Street, 2nd Floor, Merced, CA 95340
Phone: (209) 385-7654



Calaveras County General Plan Update – Water Element (Mintier Harnish & CCP)

Roger Putty, P.E., Principal Engineer
Montgomery Watson Harza
3321 Power Inn Road, Suite 300, Sacramento, CA 95826
Phone: (916) 418-8263

Lake Tahoe Restoration Project (CCP)

Phil Brozek, Project Sponsor
Senior Project Manager, Civil Project Management
U.S. Army Corps of Engineers – Sacramento District
1325 J Street, Room 1480
Sacramento, CA 95814
Phone: 916.557.7630
Email: phillip.f.brozek@ucsace.army.mil

California Water Plan Update (CCP)

Kamyar Guivetchi
Manager, Statewide Integrated Water Management
901 P Street, Second Floor, Sacramento, CA 9584
Mail: P.O. Box 942836, Sacramento, CA 95236
Phone: 916.953.3937 (office); 916.708.8245 (cell)
Email: kamyarg@water.ca.gov

Lake Davis Pike Eradication Project – California Department of Fish and Game U.S Forest Service Plumas National Forest (CCP)

Ed Pert
Regional Manager
California Department of Fish and Game
4949 Viewridge Avenue, San Diego, CA 92123
Phone: (858) 467-4201
Email: epert@dfg.ca.gov

Angela Dillingham
Partnership coordinator
U.S. Forest Service
Plumas National Forest Supervisor's Office
159 Lawrence Street, Quincy, CA 95971
Phone: (530) 283-7761
Email: adillingham@fs.fed.gov



Additional Information

Resumes of Key Personnel

DEB MARTIN PROJECT MANAGER BIOLOGIST

PROFESSIONAL HISTORY

Principal Scientist
Planning Partners

Owner/Principal
biota biological consulting

Senior Ecologist
Beak Consultants, Inc.

District Biologist
Caltrans

EDUCATION

Master of Science
Biological Science and Ecology
New Mexico State University

Bachelor of Science
Biological Sciences
University of New Mexico



PLANNING PARTNERS
P.O. Box 627
Sloughhouse, CA 95683
916/354-1620



Deb Martin, biologist, has 28 years of experience in California biology. Ms. Martin conducts and manages studies for special status plant and wildlife species, ranging from initial reconnaissance surveys to protocol surveys, mitigation design, implementation and monitoring. Ms. Martin is proficient in project management, habitat evaluation and conservation, agency compliance, interagency coordination, biological impact assessment, wetland evaluation, and habitat mapping. She is experienced and skilled in technical writing of biological portions of environmental documents, and in the development of biological education materials.

- *South Sacramento Light Rail Extension*, Sacramento Regional Transit. Conducted bio surveys and mapped habitat. Prepared Biological Assessment, and Mitigation and Monitoring Plan. Conducted agency consultation and biological monitoring. Included issues with burrowing owl, valley elderberry longhorn beetle, and listed vernal pool invertebrates.
- *Christmas Valley Special Status Plants* - Tahoe Basin. Conducted botanical survey, prepared report for US Forest Service.
- *Apalachee Special Status Plants* - Tahoe Basin. Conducted botanical survey, prepared report for US Forest Service.
- *Angora Creek Special Status Plants* – Tahoe Basin. Conducted botanical survey, prepared report for US Forest Service.
- *Pine Hill Mitigation Plan*. Peer Review and edit for another consulting firm.
- *Wild Turkey Population Management and Enhancement Project*. Research paper on Potential Impact of project on Special Status Wildlife Species for California Department of Fish and Game.*
- *Upper American River Project*. Inventory Field Survey of Special Status Plant Species. For Sacramento Metropolitan Utility District.
- *Cold Creek* -Tahoe Basin. Habitat mapping and evaluation for fisheries enhancement project for El Dorado County.
- *Amtrak to Folsom Light Rail Extension*, Sacramento Regional Transit. Prepared Biological Assessment, Mitigation and Monitoring Plan and conducted surveys and bio monitoring. Included wetlands, valley elderberry longhorn beetle, listed vernal pool invertebrates.
- *Sun Country Bike Trail*. Habitat evaluation, agency consultation, permitting, and preparation of biological mitigation and monitoring plan. City of Folsom.
- *Western Aggregate EIR*. Peer edit and review of biological chapter for project in El Dorado County.
- *Site Acquisition Bio Constraints Analysis*. Conducted bio surveys and habitat evaluations of several sites for Rocklin USD.

JULIANA PROSPERI SENIOR PLANNER

PROFESSIONAL HISTORY

Senior Planner

Planning Partners

Environmental Planner

Design Workshop

CEQA Project Manager

Los Angeles Unified School District

Environmental Analyst

Sapphos

GIS Analyst

U.S. Environmental Protection Agency

Biological Technician

U.S. Forest Service

Environmental Scientist

URS Corporation

EDUCATION

Master of Environmental and Energy Analysis

Boston University, 2004

Bachelor of Environmental Studies Bachelor of English

University of Colorado, 2001



PLANNING PARTNERS

P.O. Box 627
Sloughhouse, CA 95683
916/354-1620



Juliana Prospero, a Senior Planner with Planning Partners, has 8 years of experience as a planner and analyst working on projects ranging from authoring environmental documents for new schools, health care campuses, parks and trail development, to conducting site assessments and feasibility studies. She provides NEPA, CEQA, and TRPA compliance support, environmental review, GIS analysis, planning support, and facilitation and outreach services. Prior to joining Planning Partners, Ms. Prospero was an environmental specialist in green building and design and park and recreation projects. She worked in Santa Monica, California preparing CEQA/NEPA analyses and supported field work for biological surveys and environmental site assessments, and worked as a GIS Analyst at the USEPA-New England office in Boston. She has a background using GIS applications, providing interagency coordination, facilitating community outreach efforts, and has a strong interest in global climate change and sustainable development.

- *San Joaquin County General Plan Update* – Assisted in the preparation of technical background reports to support County's General Plan update.
- *Cottage Knoll Estates EIR* – Coordinated EIR preparation for development of a 300 lot residential subdivision in the City of Plymouth.
- *Rideout Memorial Hospital Expansion EIR* – Managed technical reports and preparation of an EIR for the consolidation of a medical campus located in the City of Marysville and Yuba City.
- *Van Sickle Bi-State Park Master Plan* – Managed implementation of 740-acre bi-state urban park project spanning California and Nevada. Included facilitation of technical advisory committee workshops and preparation of an IS/MND and TRPA Environmental Checklist.
- *Redevelopment 3 "Chateau at Heavenly Village" LEED Coordination* – Championed green building design team to facilitate certification of 12-acre urban redevelopment site for 980,000 square feet public-private partnership mixed-use infill project in City of South Lake Tahoe.
- *Mountain Lake Environment Center Opportunities & Constraints Report* – Facilitated agency workshops, reviewed technical studies, identified resource study gaps, and prepared opportunities and constraints analysis and GIS site analysis with development scenario and site plan for education center.
- *Schroeder Ranch GIS Analysis* – Compiled GIS inventory and conducted site analysis for development suitability for ranch sites and preservation area of a 80,000 acre ranch site in Ravalli County, near the City of Missoula, Montana.

Education

Juris Doctor

McGeorge School of Law, University of the Pacific

Bachelor of Arts, History

University of California, Davis

Certifications/Affiliations

- * California State Bar Association (Bar No. 99326)

Experience

Mintier Harnish

Principal

City of South San Francisco

Planning Director

Sugnet & Associates

Vice President

City of Folsom

Community Development Director

City of Sacramento

Environmental Coordinator

Balfrey & Abbott

Associate Attorney

Mintier Harnish & Associates

Partner

Sacramento Area Council of Governments

Associate Planner

County of Sacramento

Assistant Planner

Projects

- * General plans for over 10 cities and counties throughout California
- * Environmental impact reports for over 100 general plans and other projects
- * Zoning and subdivision ordinance revisions for several cities and counties



Jim Harnish is a Principal of Mintier Harnish. He has 38 years of experience in land use and environmental planning. He is also an attorney with extensive experience in land use and CEQA. He has managed large organizations for both public agencies and private consulting firms. He specializes in project management for general plans, specific plans, and large private planning projects; CEQA compli-

ance and environmental document peer review; zoning and regulatory ordinance preparation; and public outreach and consensus building.

His broad experience, in both the public and private sector, in land use planning, regulatory codes and ordinances, permit processing, environmental analysis, toxics and hazardous materials, wetlands and endangered species, and legal analysis enables Mr. Harnish to bring a wealth of experience to every project.

Mr. Harnish is currently principal in charge of General Plan Updates for the city of Galt and the counties of Merced and San Joaquin. He is also project manager and planning team leader for the Gold Rush Ranch and Golf Resort Specific Plan (Sutter Creek), as well as a 17,000-acre project in the central Sierra foothills.

Mr. Harnish has extensive experience in supervising large planning staffs and managing interdisciplinary consultant teams on complex planning projects. Mr. Harnish has managed or prepared general plans for the cities of Alturas, Healdsburg, Sacramento, South San Francisco, and Wheatland, and Modoc County. He has managed the preparation of specific plans for Southwest Live Oak and the Mountain House New Town in San Joaquin County. He also assisted Genentech with the preparation and approval of its South San Francisco Campus Master Plan and EIR.

He has managed the preparation of or conducted critical third party review of numerous EIRs and negative declarations. As Environmental Coordinator for the City of Sacramento, he led the restructuring of the City's environmental review procedures. He has worked extensively with State and Federal regulatory agencies in creating and negotiating Habitat Conservation Plans (Coalinga), 404 permits, and wetland mitigation plans.

Education

Master of Regional Planning

University of Massachusetts, Amherst

Bachelor of Arts, Ecological Biology

Connecticut College, New London

Marine Biological Laboratories

Ecosystems Center, Woods Hole

Certifications/Affiliations

- * American Planning Association
- * Urban Land Institute, *Young Leader*

Experience

Mintier Harnish

Planner

Pioneer Valley Planning Commission & City of Easthampton

Research Assistant

Lambert Commercial Real Estate

Real Estate Sales Associate

Center for Economic Development, University of

Massachusetts, Amherst

Research Assistant

Point Reyes Bird Observatory

Research Assistant

University of Miami, Rosenstiel School of Marine

and Atmospheric Science

Research Assistant

Vanasse Hangen Brustlin

Environmental and GIS intern

Projects

- * Prepared general plans for the cities of Sacramento and West Sacramento, and the counties of San Joaquin, Calaveras, San Benito, and Merced.
- * Prepared housing elements for San Joaquin County, Union City, and City of Visalia.
- * Additional Planning Studies and Reports
 - South Area Community Plan Update
 - 2030 Sacramento General Plan Livability Index and Indicators Program



Jessica Schwartz has three years experience as a planner in the public and private sectors. She specializes in long-range planning and policy, rural community planning, resource conservation planning, and housing.

Ms. Schwartz is a major contributor to the City of Sacramento General Plan, Calaveras County General Plan and Housing Element, San Joaquin County General Plan and Housing Element, San Benito County General Plan, Union City Housing Element, and City of Visalia Housing Element. In these projects, she has been involved in all stages of the process from data collection and synthesis, to issues identification, alternatives analysis, and policy development. She has specialized experience with community outreach and consensus building. Most recently, she helped facilitate the development of a Water Element for the Calaveras County General Plan Update through a partnership with the Center for Collaborative Policy and Montgomery Watson Harza.

Prior to working for Mintier Harnish, Ms. Schwartz was a research assistant for the Pioneer Valley Planning Commission and City of Easthampton, Massachusetts where she conducted research on implementation of a Transfer of Development Rights (TDR) program. In graduate school, her research interests focused on land conservation strategies including priority habitat mapping, public-private partnerships, conservation finance, and land acquisition techniques. Prior to her Master degree, Ms. Schwartz worked with a variety of research institutions such as the Marine Biological Laboratories in Woods Hole studying the connections between terrestrial and aquatic ecosystems on Cape Cod, and for Point Reyes Bird Observatory as an assistant field researcher studying the reproductive success of song birds in Wyoming sage brush habitat. Complementing her degree in ecological biology, she conducted additional research on watersheds near Chirripo National Park in Costa Rica, tropical song bird migration patterns in Costa Rica, and tropical larval fish migration in Miami. She has also worked as an environmental and GIS intern for Vanasse Hangen Brustlin, an engineering and design firm.



California State University, Sacramento Center for Collaborative Policy

Gina Bartlett, Lead Mediator

Education

M.S. Conflict Analysis and Resolution, Institute for Conflict Analysis and Resolution, George Mason University, 1994

B.A. Political Science, University of Illinois, 1989

Select Publications

Seeking Consensus on California Water, World Mediation Forum, Argentina, 2003

Mid-Level Facilitators & Mediators: Integrating Experience for Professional Success, Society for Professionals in Dispute Resolution Annual Conference, New Mexico, 2000

Professional Memberships

U.S. Institute for Environmental Conflict Resolution, Approved Practitioner

Association for Conflict Resolution

International Association of Facilitators

Honors and Awards

Former Chair, Board of Directors, Berkeley Film Festival on Conflict Resolution

Former Board Member, Consortium on Peace, Research, Education & Development, International Non-Profit Organization

Former Board Member, Association for Conflict Resolution Chicago Chapter

Selected Training

Mediator Training, Multi-Door Court House, Washington, D.C., 1993

Gina Bartlett serves as a public policy mediator and facilitator for state and local governments, and business and interest groups. Her work is primarily concentrated in mediating natural resource issues, conducting situation assessments and facilitating organizational change. Ms. Bartlett has worked on efforts related to forest management, water supply, open space, public access, natural resource management, recreation, and land use.

Project Experience

Russian River Flow & Restoration Issue Assessment

Client: Sonoma County Water Agency, Bill Keene, Tel: 707- 547-1922. Date: April 2008 to present. Location: Russian River, Sonoma County, California.

Lower Yuba River Issue Assessment

Client: South Yuba River Citizen's League, Jason Rainey, Executive Director, and Derek Hitchcock, Project Manager, Tel: 530-265-5961. Date: August 2007 to June 2008. Location: Lower Yuba River, Yuba County, California.

Cosumnes, American, Bear and Yuba Rivers Integrated Regional Water Management Plan.

Clients - El Dorado Irrigation District and California Department of Water Resources (DWR). March 2006 - Present.

Altamont Pass Wind Resource Area Scientific Review Committee Facilitation.

Client: County of Alameda Planning Department. Date: Summer 2006 – today. Location: Bay Area / Alameda County, California.

Sonoma Valley Groundwater Management Plan Assessment and Facilitation.

Client: Sonoma County Water Agency and Department of Water Resources, Date: Nov 2005 to Present. Location: Sonoma County, California.

Sierra and Sequoia National Forests Assessment.

Client: U.S. Institute for Environmental Conflict Resolution. Date: Sept-Oct 2007. Location: California.

Bay Area Water Trail Steering Committee.

Clients: Bay Conservation and Development Commission, California Coastal Conservancy and Association of Bay Area Governments. 2005 – 2006. Location: San Francisco, California.

San Francisco Estuary Invasive Spartina Program Scientific Review Committee.

Client: California Coastal Conservancy. May 2006. Location: Berkeley and Tiburon.

Stanislaus National Forest Stewardship and Fireshed Assessment Workshops.

Client: Stanislaus National Forest, August & September 2005, Sonora, California.

California Water Plan.

Client: State of California Department of Water Resources, 2002 - Present.

Lower American River Task Force and Recreation Management Plan and American River Parkway Plan Update.

Clients: County of Sacramento Planning Department and Department of Parks & Recreation. Sacramento Area Flood Control Agency. 2000-2004.

Butte County, California, Water Resources Collaborative.

Clients: Department of Water Resources and Butte County Department of Water and Resource Conservation. 2000-2001.